

Article

Novel Procedures for Sustainable Design in Structural Rehabilitation on Oversized Metal Structures

Mocanu Stefan ¹, Rece Laurentiu ¹, Burlacu Adrian ^{1,*}, Florescu Virgil ¹, Corneliu Rontescu ², Arina Modrea ³

¹ Technical University of Civil Engineering of Bucharest, Bucharest 020396, Romania; stefan.mocanu@utcb.ro (S.M.), rece@utcb.ro (L.R.), virgil.florescu@utcb.ro (V.F.)

² Quality Engineering and Industrial Technologies Department, Faculty of Industrial Engineering and Robotics, University Politehnica of Bucharest, 313 Spl Independentei, 060042 Bucharest, Romania; corneliu.rontescu@yahoo.com

³ George Emil Palade University of Medicine, Pharmacy, Science and Technology of Targu Mures, Targu Mures 540088, Romania; arina.modrea@umfst.ro

* Correspondence: adrian.burlacu@utcb.ro (A.B.); Tel. +40-723-645-722

Supplementary

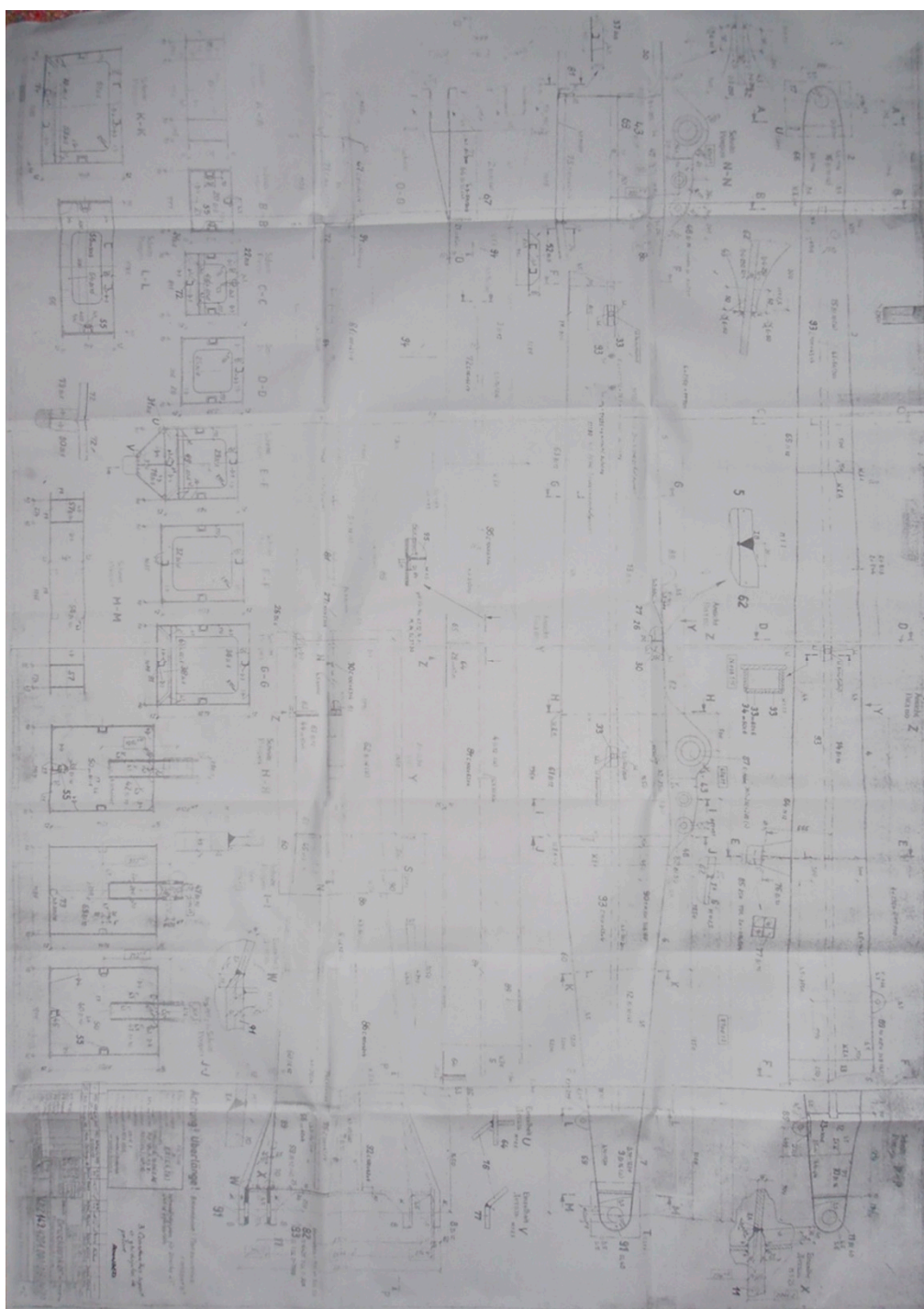


Figure S1. Archive documentation

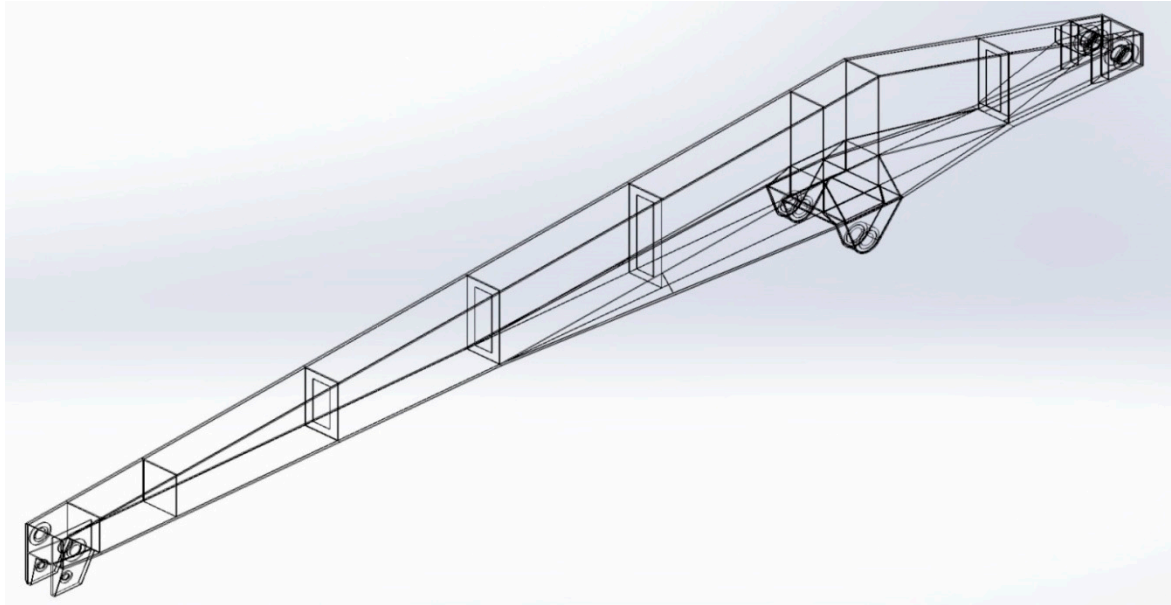


Figure S2. Superior arm

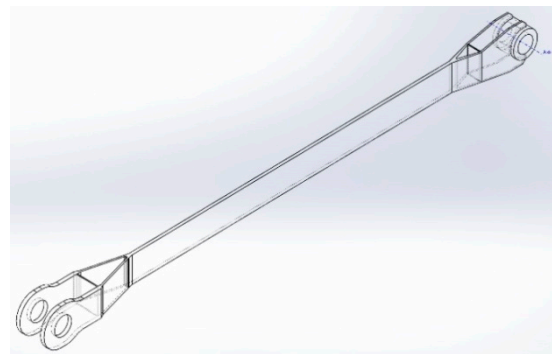
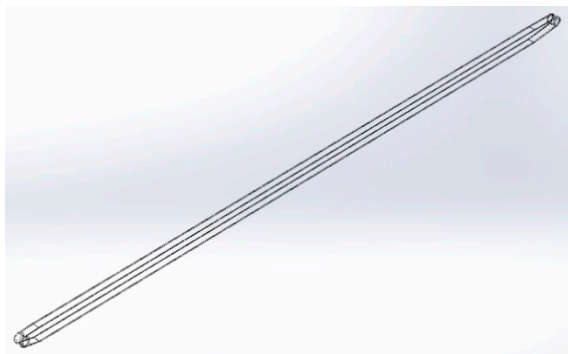


Figure S3. Quadrilateral mechanism-closing elements

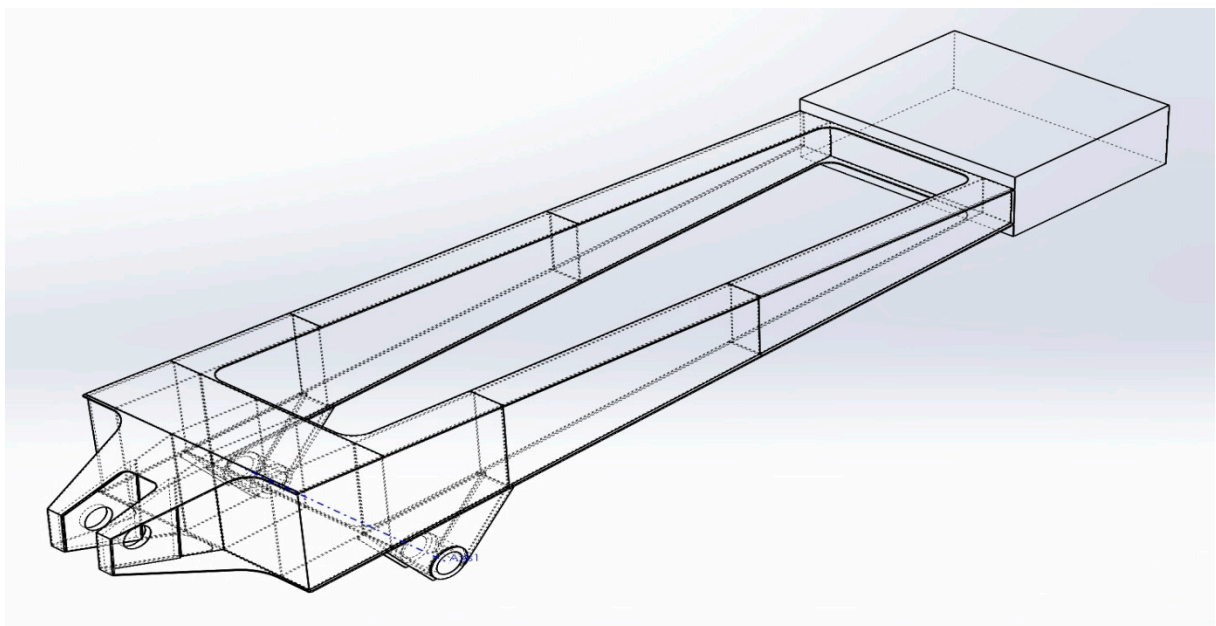


Figure S4. Counterweight

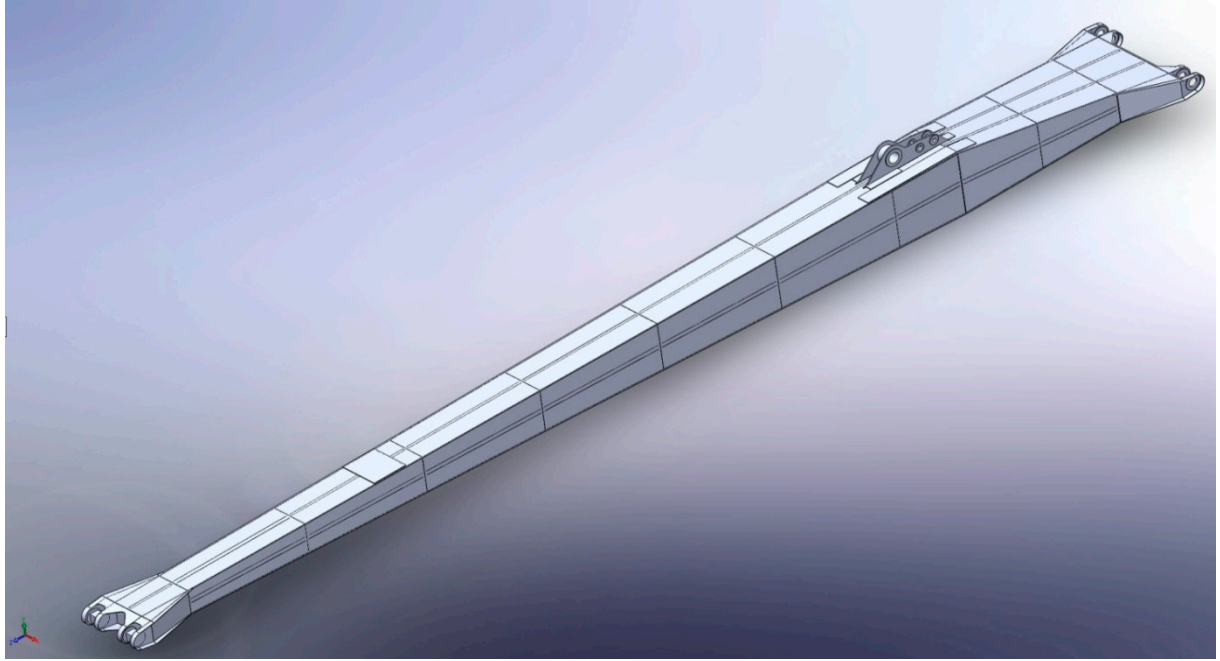
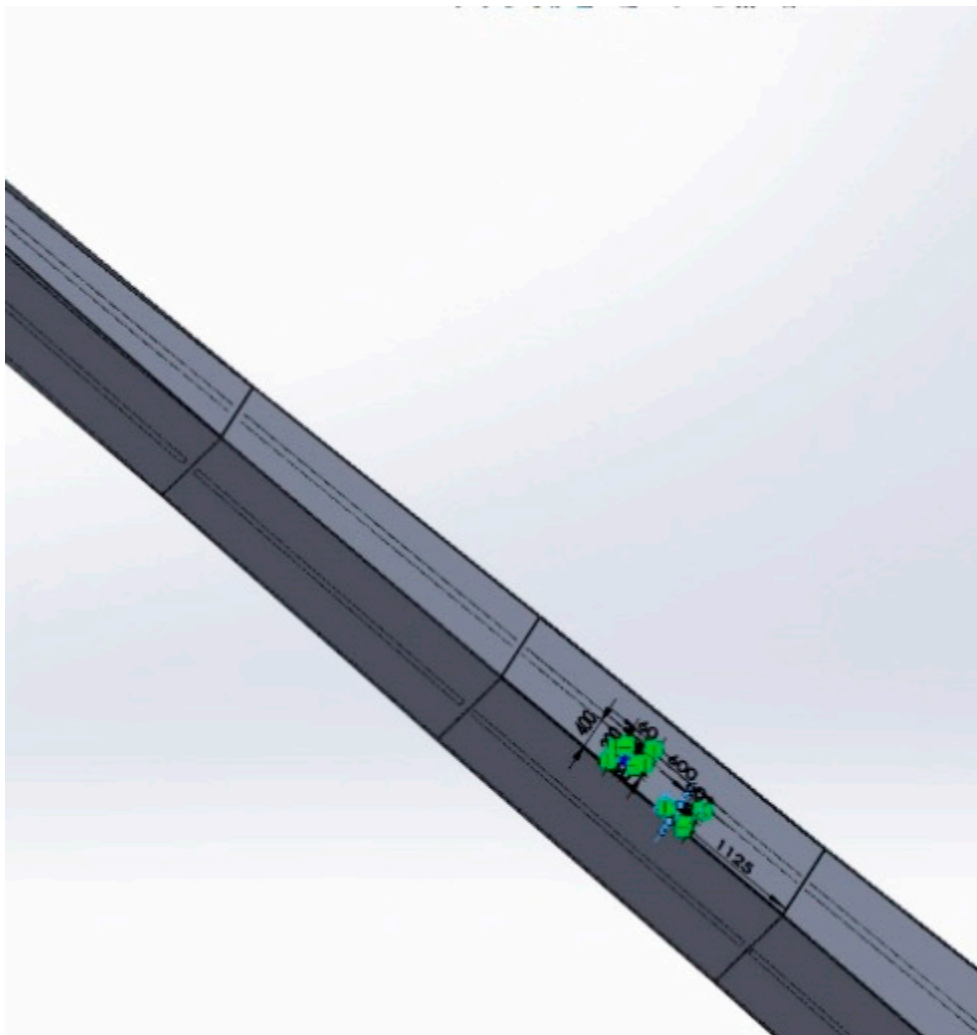
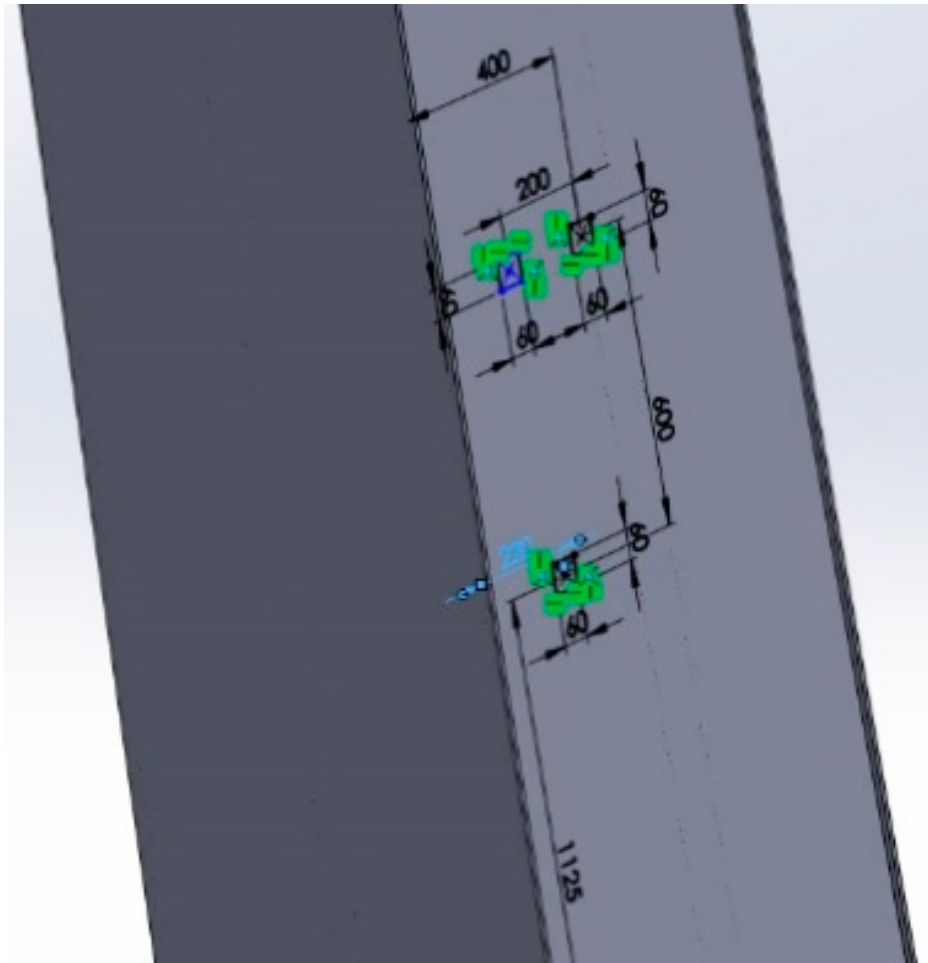


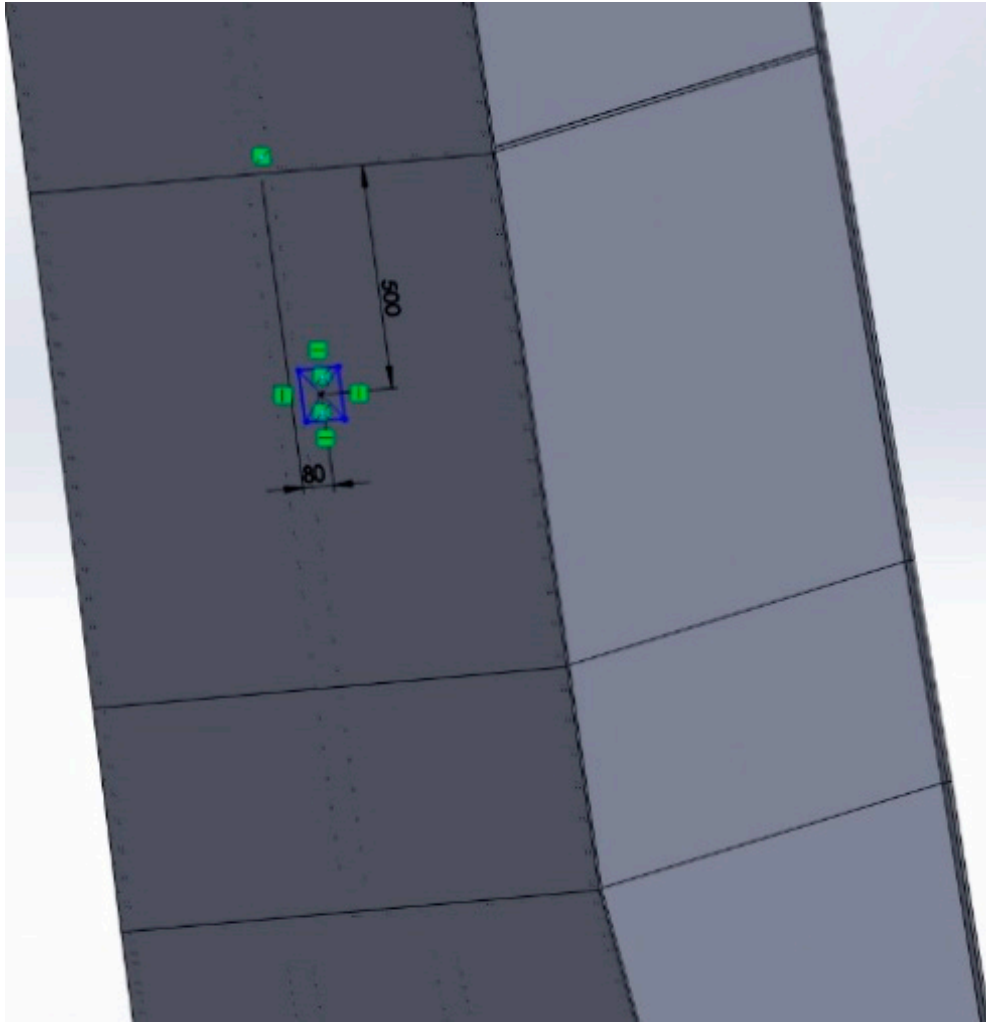
Figure S5. Main boom (arm) section



(a)



(b)



(c)
Figure S6. (a): Transducer positioning scheme; (b): Transducer positioning scheme; (c):
Transducer positioning scheme

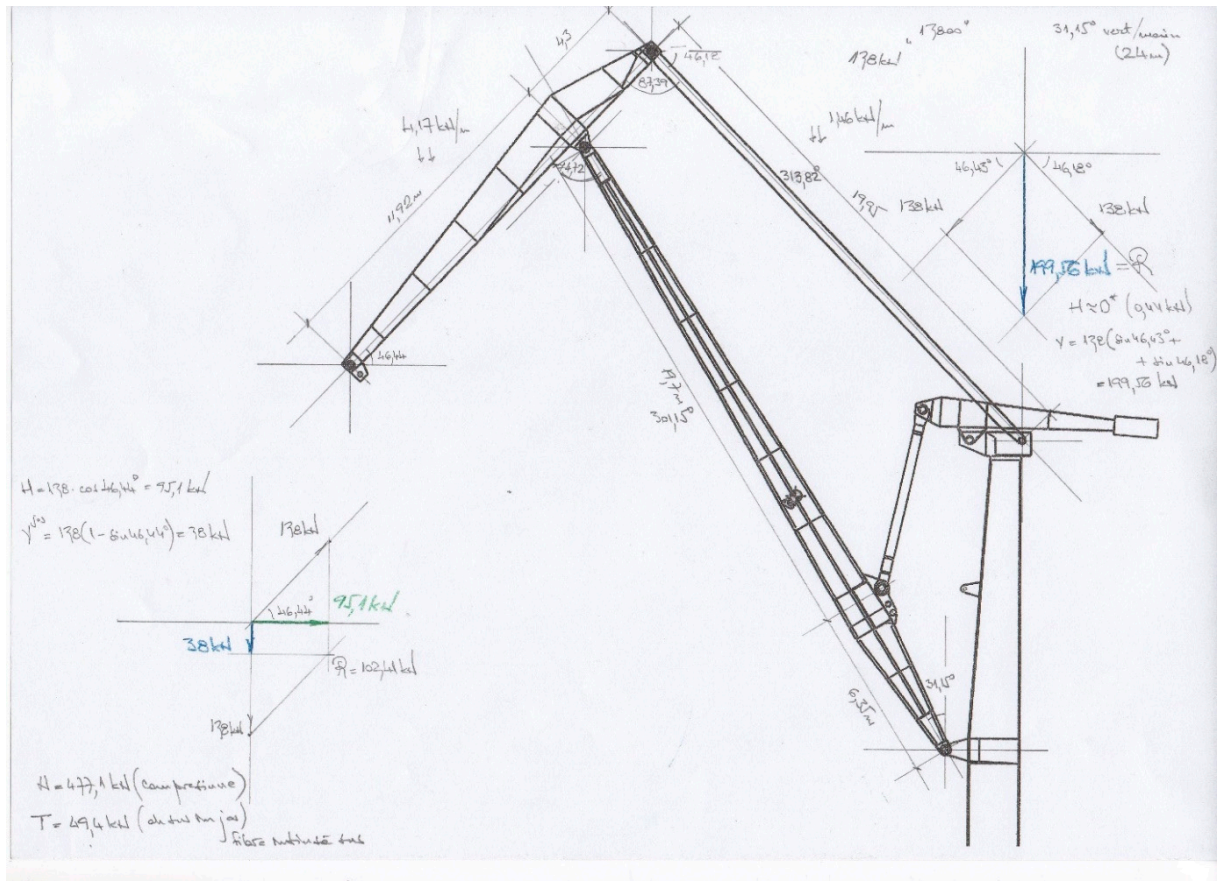


Figure S7. Graphic approach

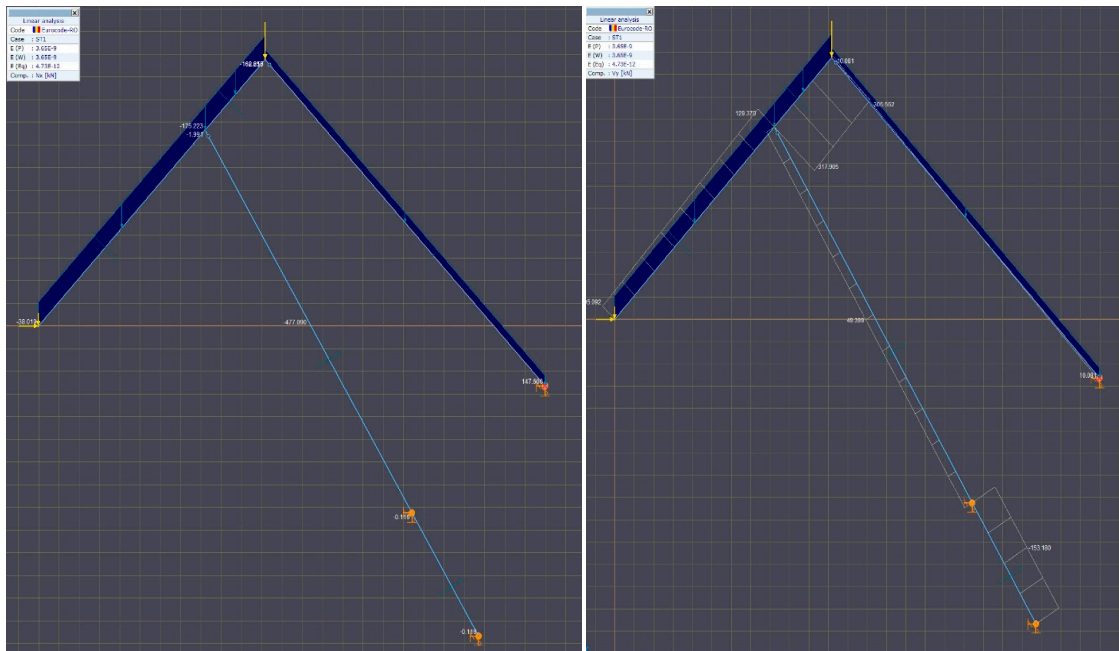


Figure S8. Analytical approach

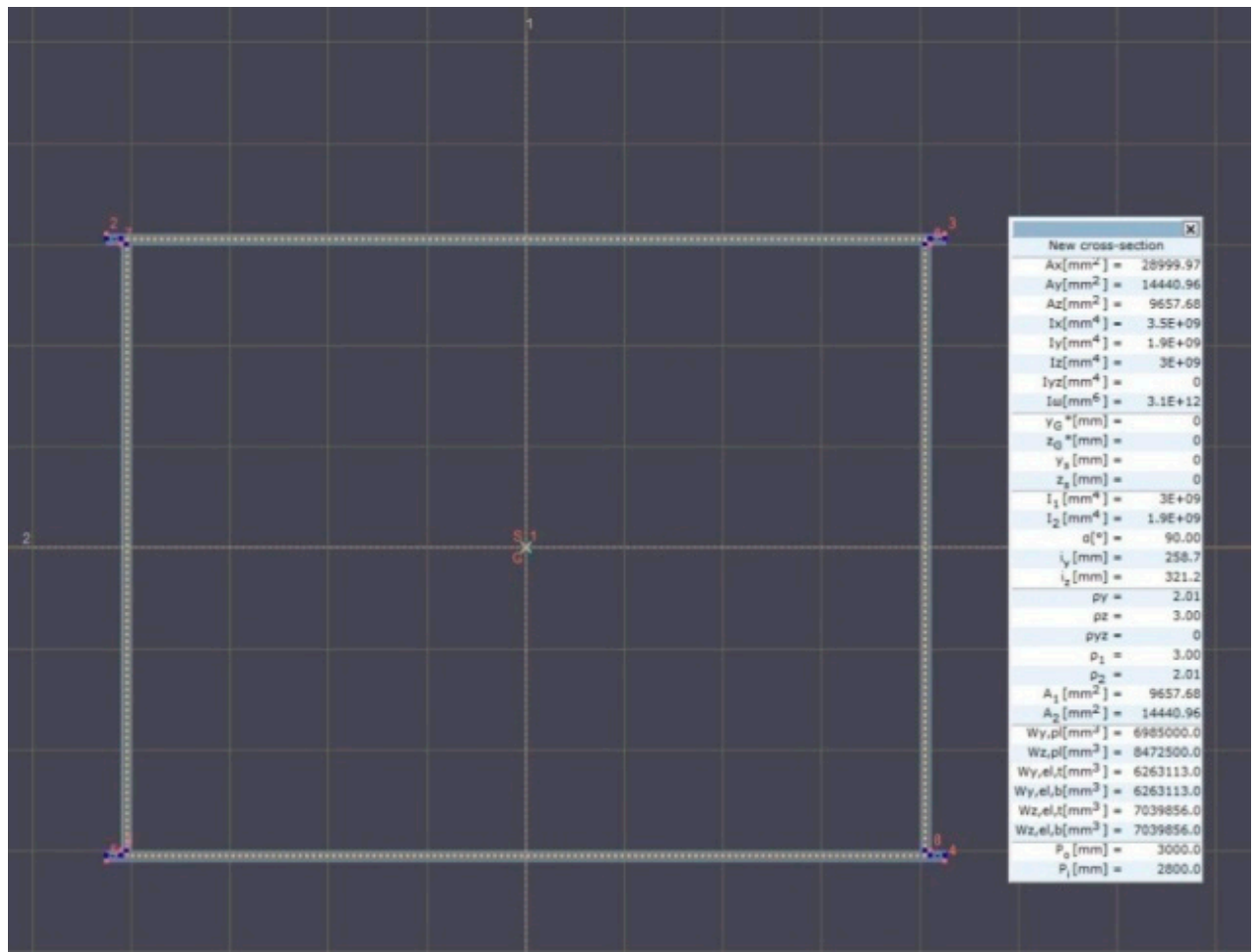


Figure S9. Initial variant cross section

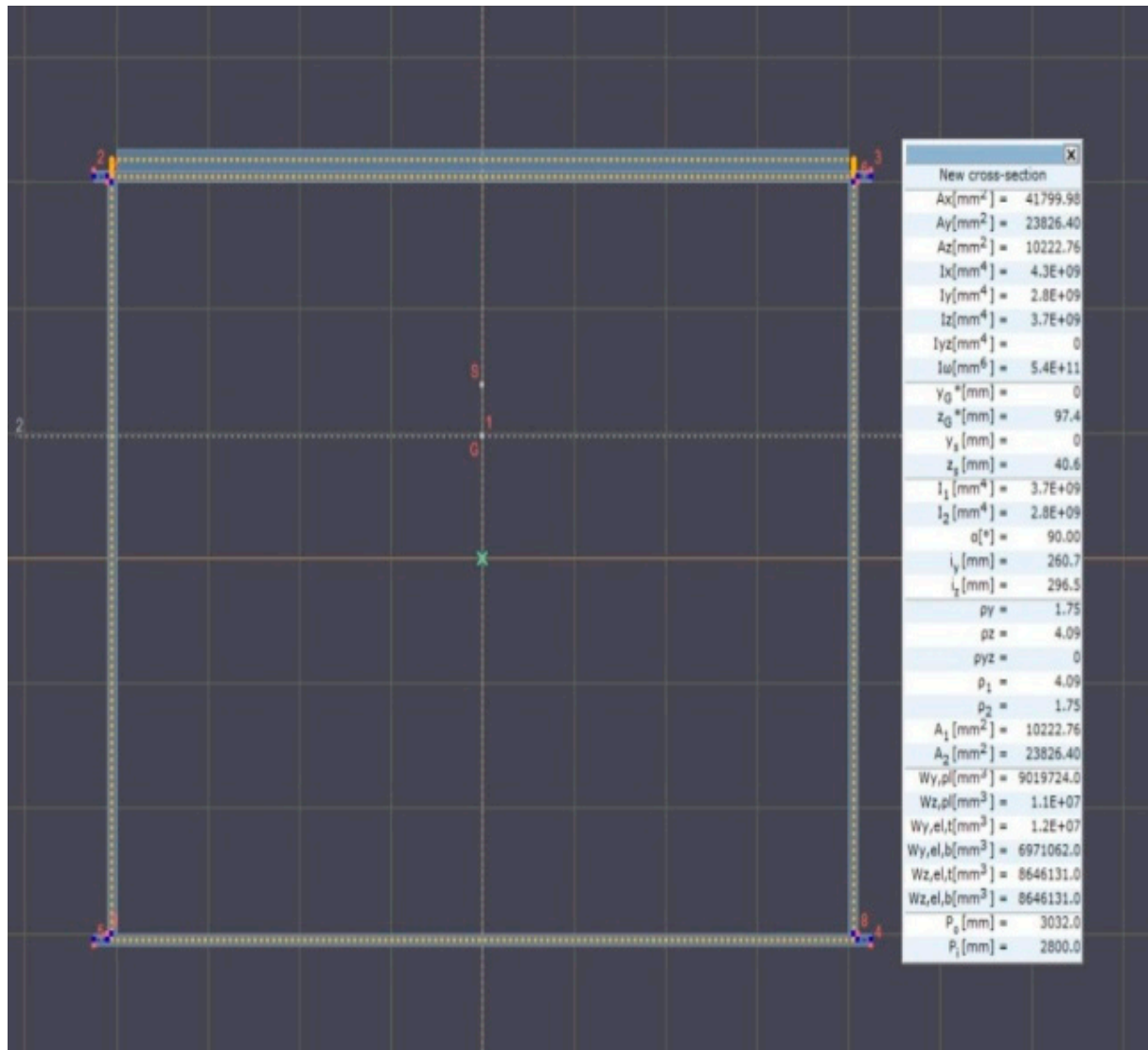


Figure S10. Plated variant cross section

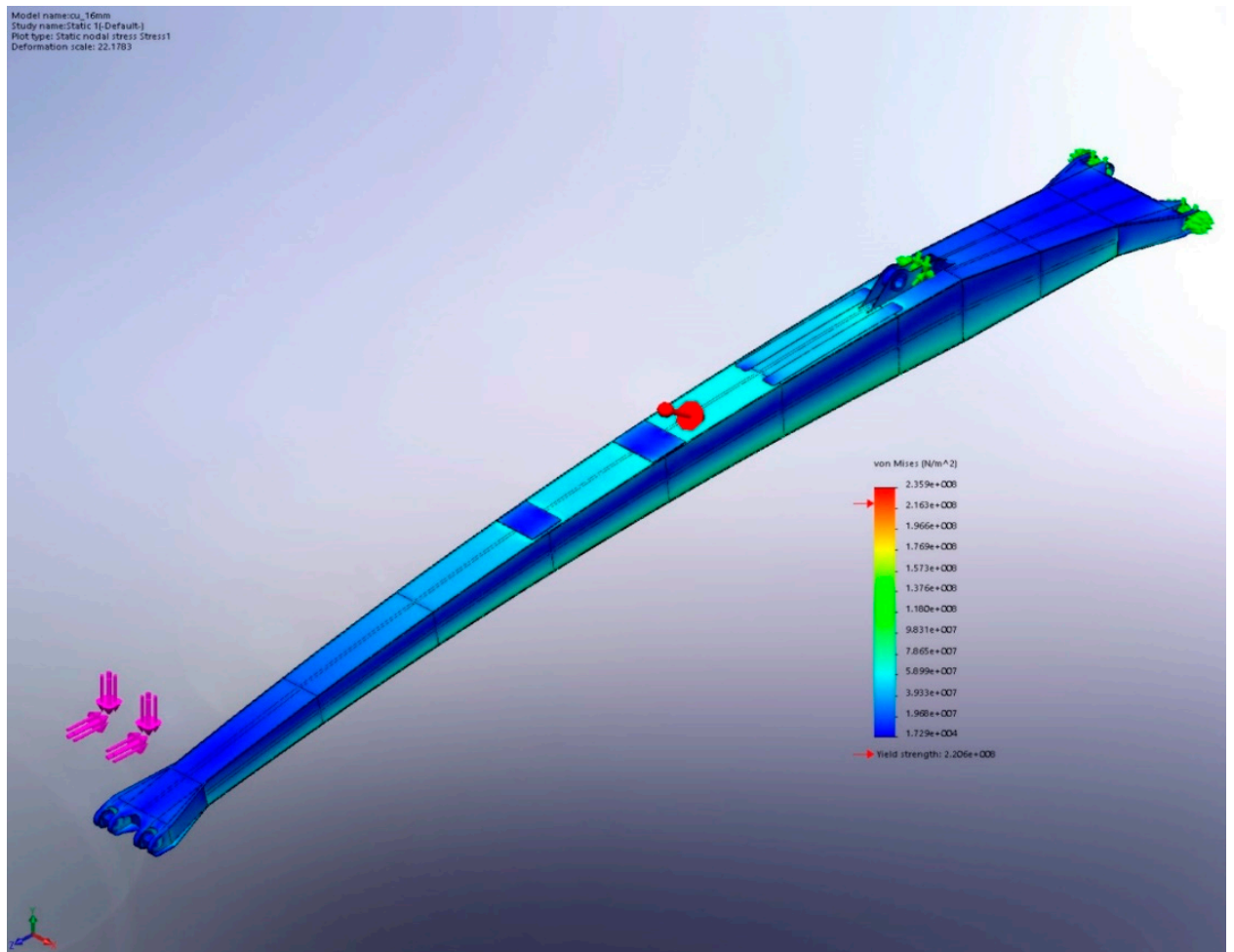


Figure S11. Equivalent normal stress – von Mises criterion.

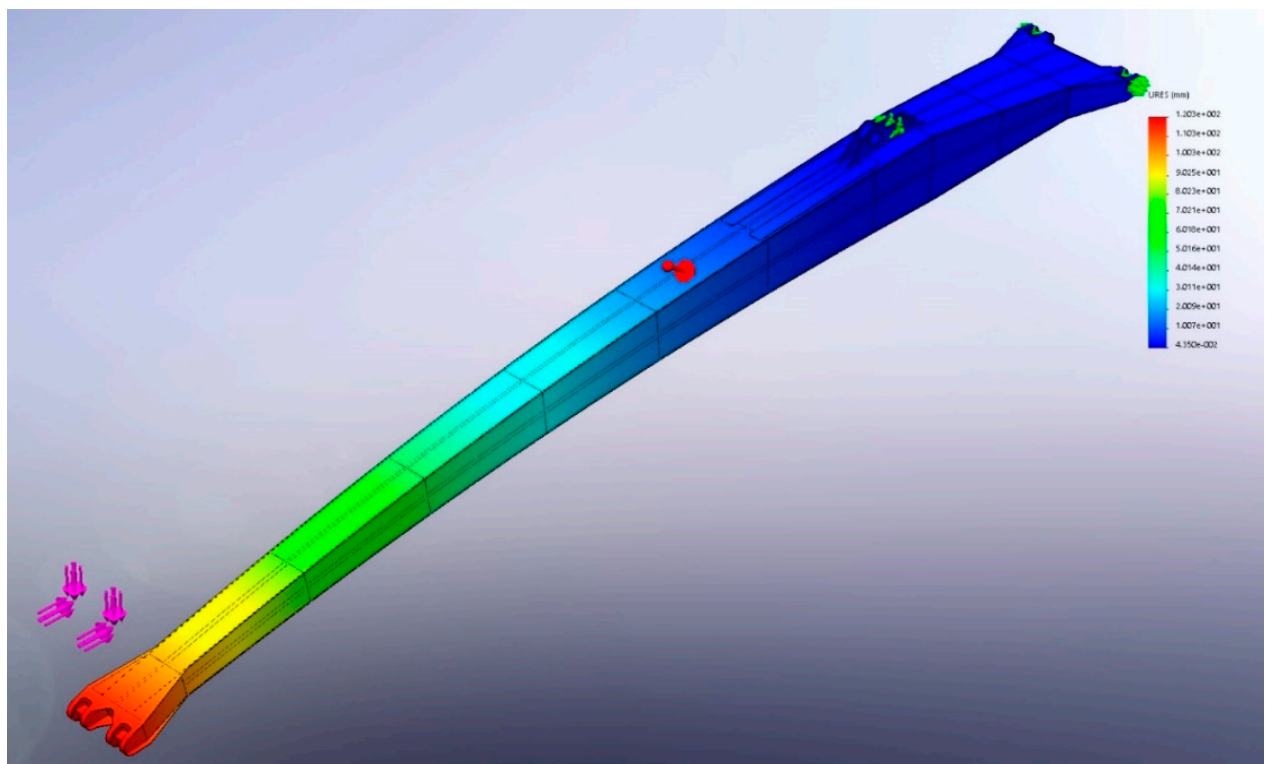


Figure S12. Deformation field.

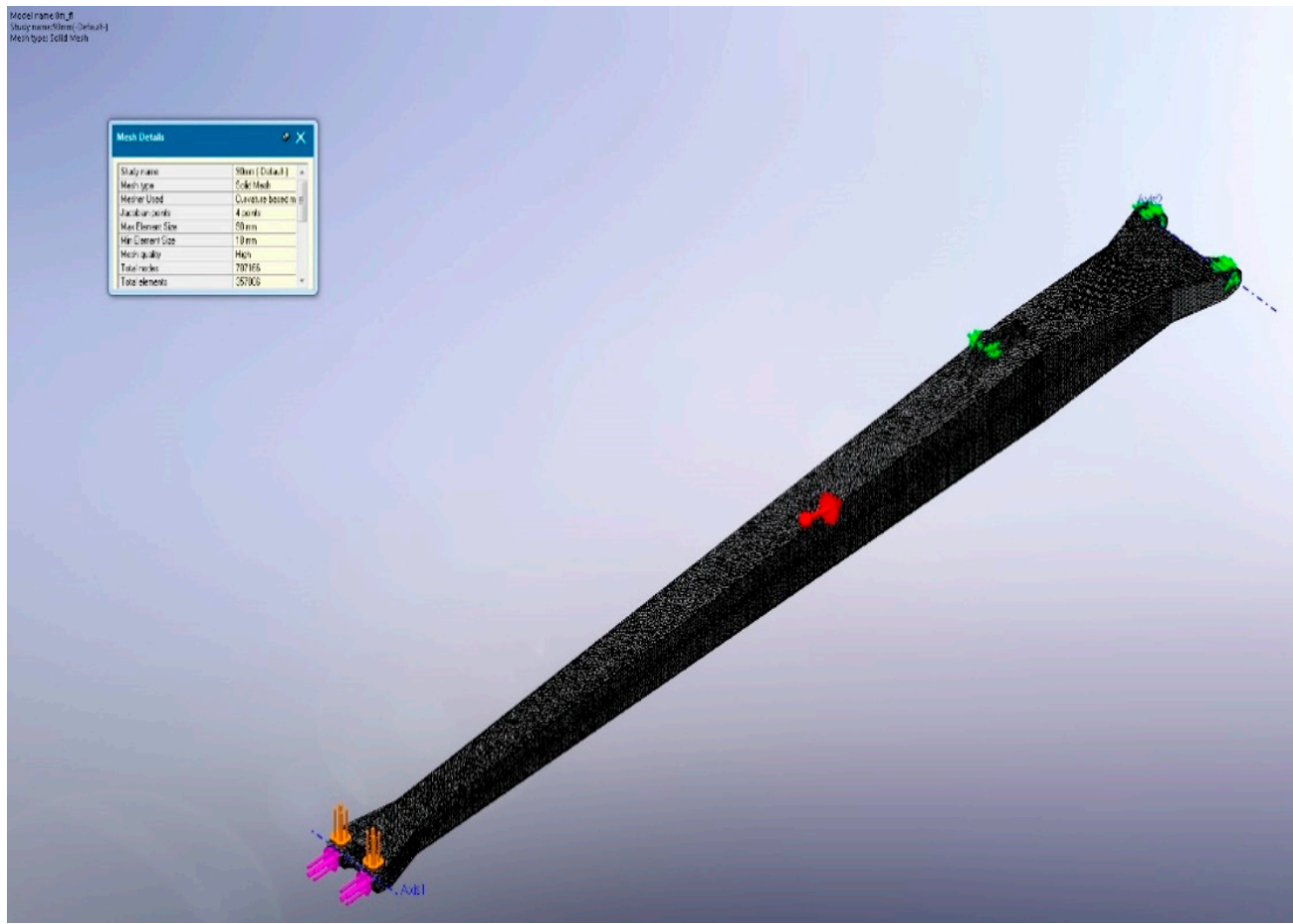


Figure S13. Main boom (arm) meshing.

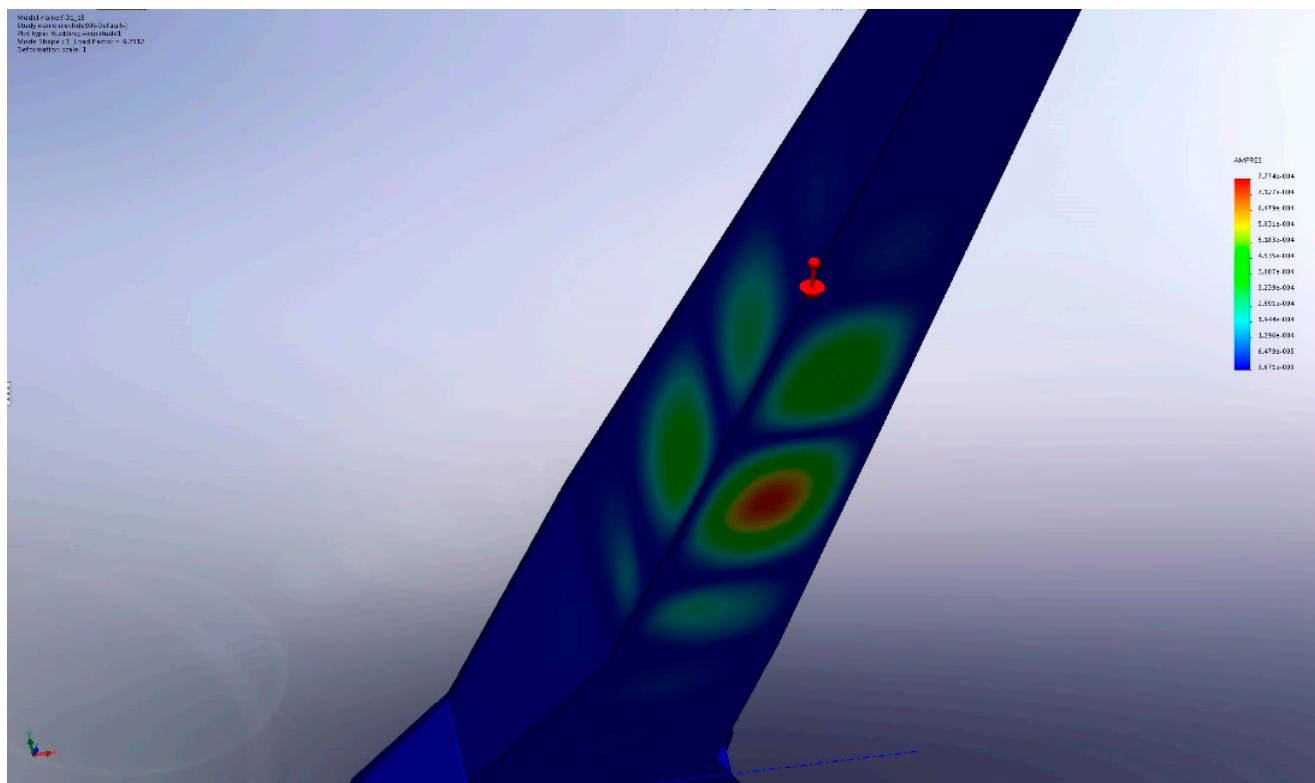


Figure S14. Buckling study.