

Supplementary Material

Selective Laser Melting of 316L Austenitic Stainless Steel: Detailed Process Understanding Using Multiphysics Simulation and Experimentation

Peyman Ansari ^{1,*}, Asif Ur Rehman ², Fatih Pitir ², Salih Veziroglu ³, Yogendra K. Mishra ⁴, Oral Cenk Aktas ³ and Metin U. Salamci ^{1,5}

¹ Department of Mechanical Engineering, Gazi University, Ankara 06570, Turkey; msalamci@gazi.edu.tr

² ERMAKSAN, Bursa 16065, Turkey; asyf.rehman@gmail.com (A.U.R.); Fatih.Pitir@ermaksan.com.tr (F.P.)

³ Chair for Multicomponent Materials, Institute of Materials Science, Faculty of Engineering, Kiel University, Kaiserstr. 2, 24143 Kiel, Germany; sve@tf.uni-kiel.de (S.V.); oca@tf.uni-kiel.de (O.C.A.)

⁴ Mads Clausen Institute, NanoSYD, University of Southern Denmark, Alsion 2, 6400 Sønderborg, Denmark; mishra@mci.sdu.dk

⁵ Additive Manufacturing Technologies Research Center (EKTAM), Gazi University, Ankara 06560, Turkey

* Correspondence: peyman.ansari@gazi.edu.tr

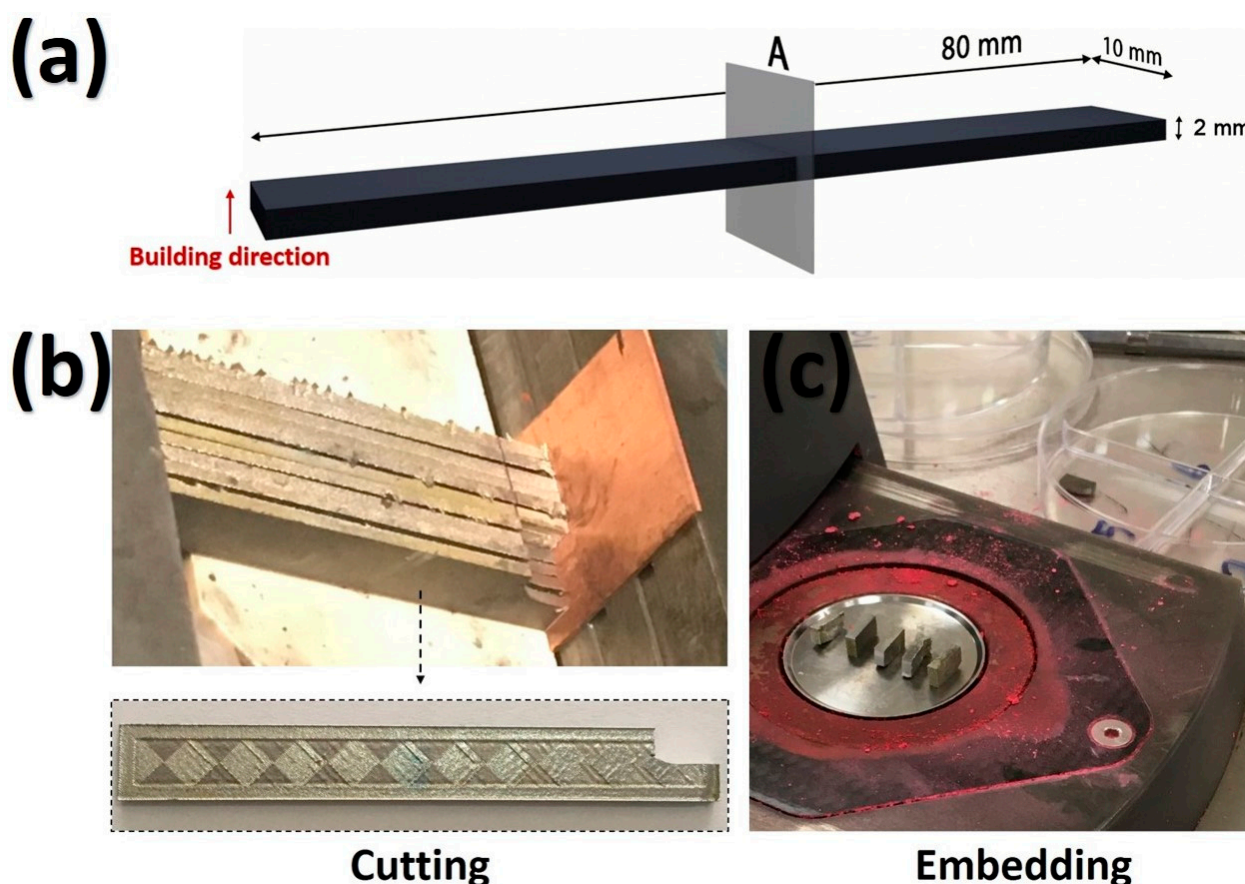


Figure S1. (a) Pattern and dimensions of the fabricated samples. Samples were cut in line with the plane (A) to examine the microstructure. (b) Cutting and (c) embedding the samples for microstructure inspection.

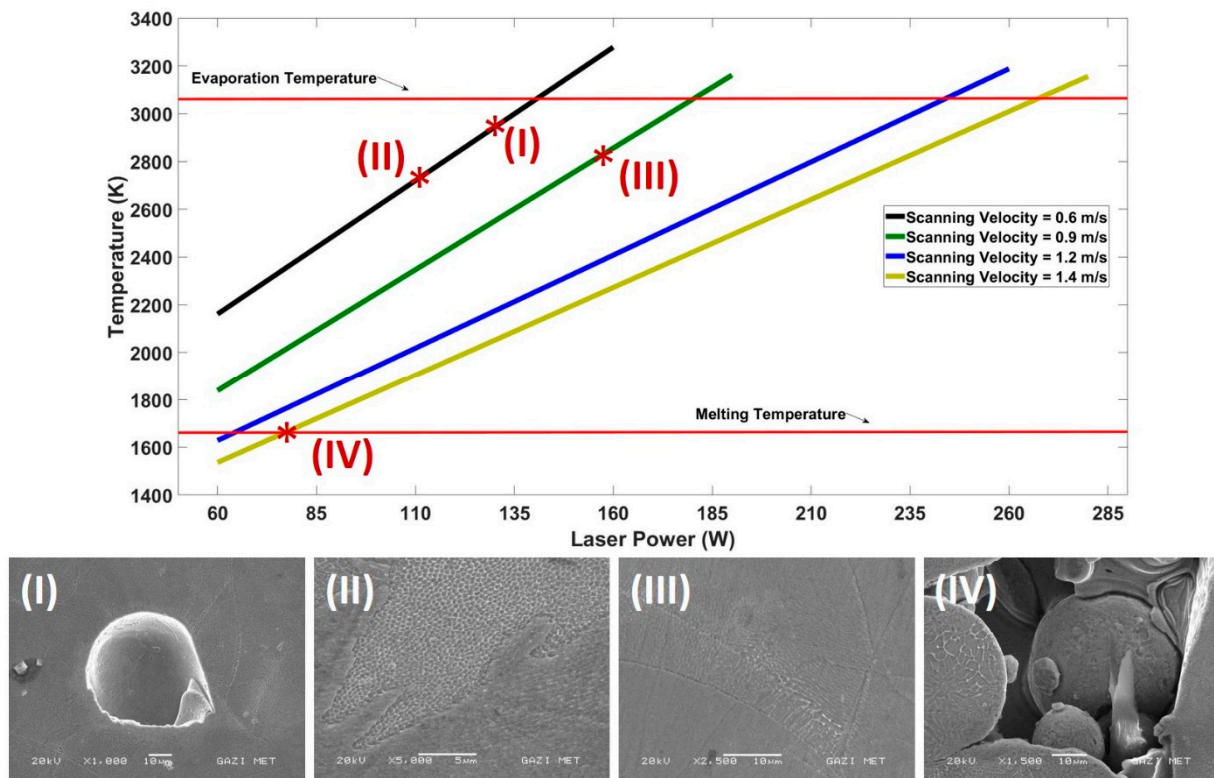


Figure S2. Reflection of SEM images of experimental results on simulation results with a laser spot diameter of 80 μm .

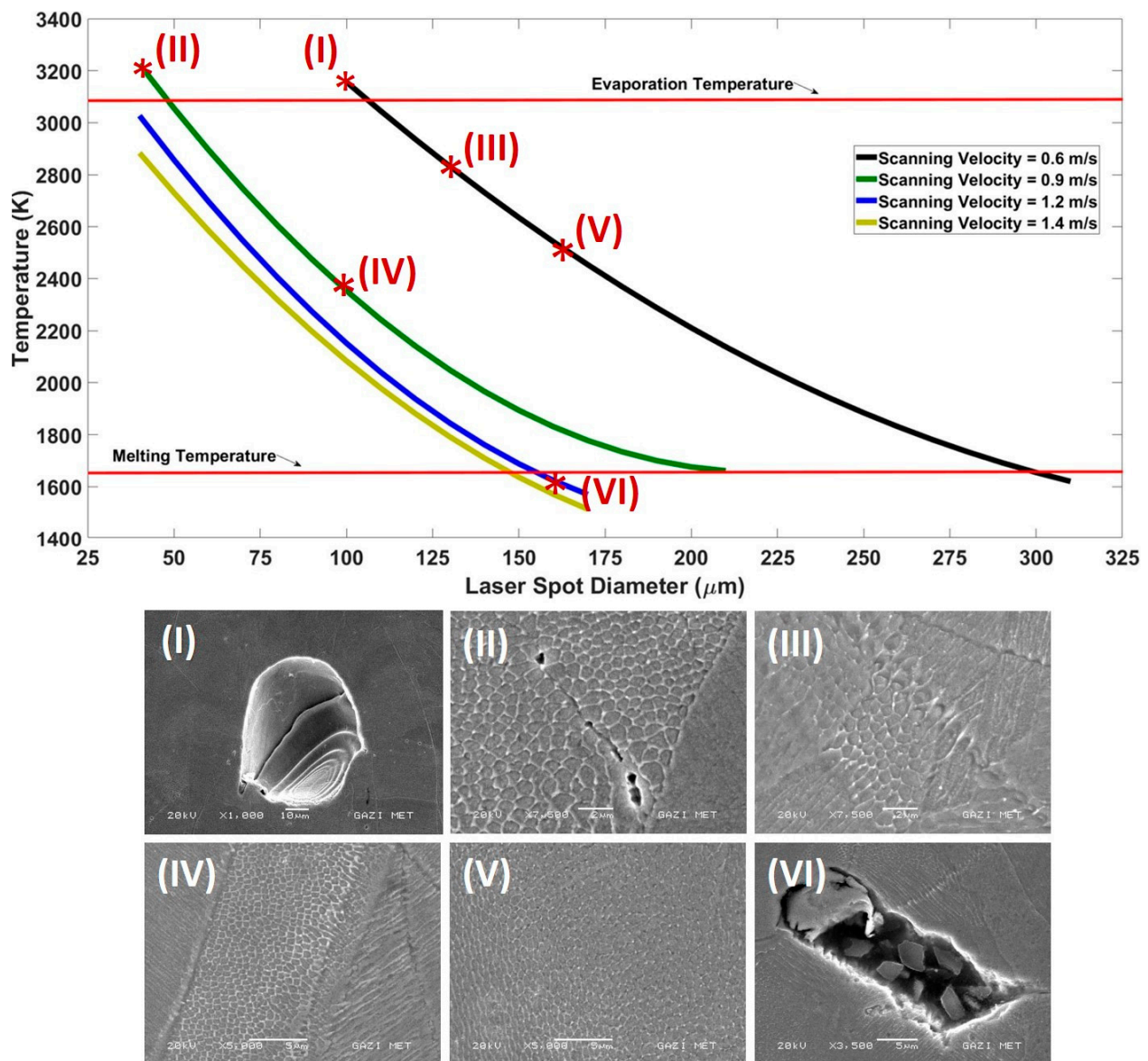


Figure S3. Reflection of SEM images of experimental results on simulation results with a laser power of 150 w.