

Table S1. Information about the collection sites and host plants of thrips from Bangladesh

Sample no.	Collection date	Host Plant	Location	Name of species	Latitude and longitude	Accession number
Rang-Br-01	2021.11.17	<i>Solanum melongena</i>	Sankarpur, Badarganj, Rangpur	<i>Thrips palmi</i>	25° 40' 11.1288" N 89° 3' 19.764" E	OR481072
Rang-Br-09	2021.11.17	<i>Solanum melongena</i>	Palichora, Mithapukur, Rangpur	<i>Thrips palmi</i>	25° 44' 26.088" N 89° 15' 40.1004" E	OR481073
Dinaj-Br-11	2021.12.24	<i>Solanum melongena</i>	Pakerhut, Khansama, Dinajpur	<i>Thrips palmi</i>	25° 37' 18.8004" N 88° 38' 18.5604" E	OR481074
Nil-Be-15	2021.12.28	<i>Phaseolus vulgaris</i>	Kuthipara, Sadar, Nilphamari	<i>Thrips palmi</i>	25° 56' 35.232" N 89° 3' 48.744" E	OR481075
Lal-Br-18	2022.01.19	<i>Solanum melongena</i>	Kakina, Kaliganj, Lalmonirhut	<i>Thrips palmi</i>	23° 43' 15.996" N 88° 14' 24.864" E	OR481076
Panch-Be-26	2022.02.15	<i>Phaseolus vulgaris</i>	Daviganj, Panchagarh	<i>Thrips palmi</i>	26° 18' 47.7612" N 88° 31' 28.1964" E	OR481077
Panch-Pump-28	2022.02.15	<i>Cucurbita moschata</i>	Daviganj, Panchagarh	<i>Thrips palmi</i>	26° 18' 47.7612" N 88° 31' 28.1964" E	OR481078
Nil-Br-14	2021.12.28	<i>Solanum melongena</i>	Kuthipara, Sadar, Nilphamari	<i>Thrips palmi</i>	25° 56' 35.232" N 89° 3' 48.744" E	OR481079
Lal-Pump-20	2022.01.19	<i>Cucurbita moschata</i>	Biman Bandor, Sadar, Lalmonirhut	<i>Thrips palmi</i>	25° 44' 26.088" N 89° 15' 40.104" E	OR481080
Lal-Br-21	2022.01.19	<i>Solanum melongena</i>	Biman Bandor, Sadar, Lalmonirhut	<i>Thrips palmi</i>	25° 44' 26.088" N 89° 15' 40.104" E	OR481081
Kuri-Cucum-23	2022.01.19	<i>Cucumis sativus</i>	Singerdubri, Rajarhut, Kurigram	<i>Thrips palmi</i>	25° 44' 26.088" N 89° 15' 40.1004" E	OR481082
Kuri-Br-25	2022.01.19	<i>Solanum melongena</i>	Singerdubri, Rajarhut, Kurigram	<i>Thrips palmi</i>	25° 44' 26.088" N 89° 15' 40.1004" E	OR481083
Panch-Br-27	2022.02.15	<i>Solanum melongena</i>	Daviganj, Panchagarh	<i>Thrips palmi</i>	26° 18' 47.7612" N 88° 31' 28.1964" E	OR481084
Joy-Cucum-32	2022.01.27	<i>Cucumis sativus</i>	Panchbibi, Joypurhat	<i>Thrips palmi</i>	25° 12' 27.1332" N 89° 4' 25.7592" E	OR481085
Thakur-Pump-37	2022.04.06	<i>Cucurbita moschata</i>	Pirganj, Thakurgao	<i>Thrips palmi</i>	26° 1' 55.5636" N 88° 27' 38.5776" E	OR481086
Thakur-Ash-38	2022.04.06	<i>Benincasa hispida</i>	Pirganj, Thakurgao	<i>Thrips palmi</i>	26° 1' 55.5636" N 88° 27' 38.5776" E	OR481087
Bog-Ridge-44	2022.07.08	<i>Luffa acutangula</i>	Shantahar, Bogura	<i>Thrips palmi</i>	24° 48' 3.672" N	OR481088

Dinaj-Ash-46	2022.07.14	<i>Benincasa hispida</i>	Parbotipur, Dinajpur	<i>Thrips palmi</i>	88° 59' 14.352" E 25° 37' 18.804" N	OR481089
Bag-Br-Khul3	2022.02.05	<i>Solanum melongena</i>	Chitolmari, Bagerhat	<i>Thrips palmi</i>	88° 38' 18.564" E 22° 39' 32.616" N	OR481090
Bag-Mari-Khul4	2022.02.14	<i>Calendula arvensis</i>	Chitolmari, Bagerhat	<i>Thrips palmi</i>	89° 48' 25.236" E 22° 39' 32.616" N	OR481091
Gazi-Ro-G5	2022.12.22	<i>Rosa scinensis</i>	Gazipur	<i>Thrips palmi</i>	89° 48' 25.236" E 24° 5' 44.9448" N	OR481092
Mymen-Br-M2	2022.08.07	<i>Solanum melongena</i>	Mymenshing	<i>Thrips palmi</i>	90° 24' 45.0756" E 24° 44' 21.8292" N	OR481093
Noa-Br-N2	2022.08.07	<i>Solanum melongena</i>	Noakhali	<i>Thrips palmi</i>	90° 24' 28.7352" E 22° 48' 30.4956" N	OR481094
Khag-Br-K1	2022.11.26	<i>Solanum melongena</i>	Khagrachori	<i>Thrips palmi</i>	91° 6' 59.0148" E 23° 4' 19.8876" N	OR481095
Rang-Br-B1	2023.01.01	<i>Solanum melongena</i>	Parbotipur Badarganj	<i>Thrips palmi</i>	92° 0' 34.2324" E 25° 44' 26.088" N	OR481096
Khag-Ok-K7	2023.01.01	<i>Abelmoschus esculentus</i>	Khagrachori	<i>Thrips palmi</i>	89° 15' 40.104" E 23° 4' 19.8876" N	OR481097
Brah-Br-1	2023.02.03	<i>Solanum melongena</i>	Brahmanbaria	<i>Thrips palmi</i>	92° 0' 34.2324" E 23° 57' 50.9112" N	OR481098
Rang-Mari-06	2021.11.17	<i>Calendula arvensis</i>	Soddopuscorni, Mithapukur, Rangpur	<i>Thrips palmi</i>	91° 7' 5.8836" E 25° 44' 26.088" N	OR481099
Khag-T0-K4	2022.12.17	<i>Solanum lycopersicum</i>	Khagrachori	<i>Thrips palmi</i>	89° 15' 40.104" E 23° 4' 19.8876" N	OR481100
Bog-Ash-42	2022.07.08	<i>Benincasa hispida</i>	Comarpur, Bogura	<i>Thrips palmi</i>	92° 0' 34.2324" E 24° 48' 3.672" N	OR481101
Bog-Be-45	2022.07.08	<i>Phaseolus vulgaris</i>	Comarpur, Bogura	<i>Thrips palmi</i>	88° 59' 14.352" E 24° 48' 3.672" N	OR481102
Rang-Ridge-41	2022.04.06	<i>Luffa acutangula</i>	Kalamtol, Badarganj Rangpur	<i>Thrips palmi</i>	88° 59' 14.352" E 25° 44' 26.088" N	OR481103
Dinaj-Br-48	2022.07.14	<i>Solanum melongena</i>	Parbotipur dinajpur	<i>Thrips palmi</i>	89° 15' 40.104" E 25° 37' 18.804" N	OR481104
Dinaj-Pump-49	2022.07.14	<i>Cucurbita moschata</i>	Parbotipur dinajpur	<i>Thrips palmi</i>	88° 38' 18.564" E 25° 37' 18.804" N	OR481105
Rang-Bi-33	2022.03.04	<i>Momordica charantia</i>	Kalirhat, Badarganj Rangpur	<i>Thrips palmi</i>	88° 38' 18.564" E 25° 44' 26.088" N	OR481106
					89° 15' 40.104" E	

Khag-Mari-K6	2023.01.01	<i>Calendula arvensis</i>	Khagrachori	<i>Thrips palmi</i>	23° 4' 19.8876" N 92° 0' 34.2324" E	OR481107
Gazi-Ch-1	2022.12.22	<i>Capsicum annuum</i>	Gazipur	<i>Haplothrips sp.</i>	24° 5' 44.9448" N 90° 24' 45.0756" E	OR482070
Gazi-Co-1.3	2022.12.22	<i>Gossypium hirsutum</i>	Gazipur	<i>Haplothrips sp.</i>	24° 5' 44.9448" N 90° 24' 45.0756" E	OR482071
Brah-Ch-H1	2023.02.03	<i>Capsicum annuum</i>	Brahmanbaria	<i>Haplothrips sp</i>	23° 57' 50.9112" N 91° 7' 5.8836" E	OR482072
Rang-Ro-7.1	2021.11.17	<i>Celosia argentea</i>	Soddopuscorni, Mithapukur, Rangpur	<i>Haplothrips bagrolis</i>	25° 44' 26.088" N 89° 15' 40.104" E	OR482073
Rang-Ro-7.2	2021.11.17	<i>Celosia argentea</i>	Soddopuscorni, Mithapukur, Rangpur	<i>Haplothrips bagrolis</i>	25° 44' 26.088" N 89° 15' 40.104" E	OR482074
Bag-Ro-Khul9.1	2022.02.14	<i>Rosa scinensis</i>	Chitolmari, Bagerhat	<i>Haplothrips andresi</i>	22° 39' 32.616" N 89° 48' 25.236" E	OR482075
Bag-Ro-Khul9.2	2022.02.14	<i>Rosa scinensis</i>	Chitolmari, Bagerhat	<i>Haplothrips andresi</i>	22° 39' 32.616" N 89° 48' 25.236" E	OR482076
Khag-Nag-K2	2022.11.26	<i>Plumeria sp</i>	Khagrachori	<i>Phlaeothripidae sp</i>	23° 4' 19.8876" N 92° 0' 34.2324" E	OR482077
Khag-Nag-K2.3	2022.11.26	<i>Plumeria sp</i>	Khagrachori	<i>Phlaeothripidae sp</i>	23° 4' 19.8876" N 92° 0' 34.2324" E	OR482078
Khan-Mari-12	2021.12.24	<i>Calendula arvensis</i>	Pakerhut, Khansama, Dinajpur	<i>Thrips parvispinus</i>	25° 37' 18.8004" N 88° 38' 18.5604" E	OR482079
Khan-Mari-12.3	2021.12.24	<i>Calendula arvensis</i>	Pakerhut, Khansama, Dinajpur	<i>Thrips parvispinus</i>	25° 37' 18.8004" N 88° 38' 18.5604" E	OR482080
Joy-Cucum-32.1	2022.01.27	<i>Cucumis sativus</i>	Panchbibi, Joypurhat	<i>Thrips parvispinus</i>	25° 12' 27.1332" N 89° 4' 25.7592" E	OR482081
Lal-Ch-35	2022.04.28	<i>Capsicum annuum</i>	Naowdabash, Hatibandha, Lalmonirhat	<i>Thrips parvispinus</i>	25° 54' 58.9896" N 89° 26' 46.0356" E	OR482082
Rang-Br-1.4	2021.11.17	<i>Solanum melongena</i>	Sankarpur, Badarganj, Rangpur	<i>Thrips parvispinus</i>	25° 40' 11.1288" N 89° 3' 19.764" E	OR482083
Rang-Ch-3.4	2021.11.17	<i>Capsicum annuum</i>	Sankarpur, Badarganj, Rangpur	<i>Thrips parvispinus</i>	25° 40' 11.1288" N 89° 3' 19.764" E	OR482084
Joy-Ch-31	2022.01.27	<i>Capsicum annuum</i>	Panchbibi, Joypurhat	<i>Thrips parvispinus</i>	25° 12' 27.1332" N 89° 4' 25.7592" E	OR482085
Raj-Ch-R3.3	2022.07.23	<i>Capsicum annuum</i>	Rajshahi	<i>Thrips parvispinus</i>	24° 21' 48.9168" N 88° 37' 26.8968" E	OR482086

Rang-Br-C1	2023.01.01	<i>Solanum melongena</i>	Boirumpur, Badarganj	<i>Thrips parvispinus</i>	25° 44' 26.088" N 89° 15' 40.104" E	OR482087
Nil-Ch-34	2022.04.10	<i>Capsicum annuum</i>	Khuthipara sadar, Nilphamari	<i>Thrips parvispinus</i>	25° 56' 5.532" N 88° 51' 21.2544" E	OR482088
Dinaj-Ch-47	2022.07.14	<i>Capsicum annuum</i>	Parbotipur, Dinajpur	<i>Thrips subnudula</i>	25° 37' 18.804" N 88° 38' 18.564" E	OR482089
Rang-Be-2	2021.11.17	<i>Phaseolus vulgaris</i>	Sankarpur, Badarganj, Rangpur	<i>Thrips hawaiiensis</i>	25° 40' 11.1288" N 89° 3' 19.764" E	OR482090
Kuri-Mus-22	2022.01.19	<i>Brassica rapa</i>	Singerdubri, Rajarhut, Kurigram	<i>Thrips hawaiiensis</i>	25° 44' 26.088" N 89° 15' 40.1004" E	OR482091
Gazi-Co-T3	2022.06.12	<i>Gossypium hirsutum</i>	Gazipur	<i>Thrips hawaiiensis</i>	24° 5' 44.9448" N 90° 24' 45.0756" E	OR482092
Khag-Rap-K5	2023.01.01	<i>Brassica rapa</i>	Khagrachori	<i>Thrips hawaiiensis</i>	23° 4' 19.8876" N 92° 0' 34.2324" E	OR482093
Gazi-Co-1.4	2022.12.22	<i>Gossypium hirsutum</i>	Gazipur	<i>Thrips hawaiiensis</i>	24° 5' 44.9448" N 90° 24' 45.0756" E	OR482094
Gazi-Mari-F1	2022.12.22	<i>Calendula arvensis</i>	Gazipur	<i>Thrips hawaiiensis</i>	24° 5' 44.9448" N 90° 24' 45.0756" E	OR482095
Bag-Mari-Khul4	2022.02.14	<i>Calendula arvensis</i>	Chitolmari, Bagerhat	<i>Thrips hawaiiensis</i>	22° 39' 32.616" N 89° 48' 25.236" E	OR482096
Rang-Mari-6	2021.11.17	<i>Calendula arvensis</i>	Soddopuscorni, Mithapukur, Rangpur	<i>Thrips hawaiiensis</i>	25° 44' 26.088" N 89° 15' 40.104" E	OR482097
Lal-Be-19	2022.01.19	<i>Phaseolus vulgaris</i>	Kakina, Kaliganj, Lalmonirhat	<i>Thrips florum</i>	23° 43' 15.996" N 88° 14' 24.864" E	OR482098
Gazi-Co-T5	2022.12.22	<i>Gossypium hirsutum</i>	Gazipur	<i>Thrips florum</i>	24° 5' 44.9448" N 90° 24' 45.0756" E	OR482099
Rang-Ro-D1	2023.01.03	<i>Rosa scinensis</i>	Badarganj, Rangpur	<i>Thrips florum</i>	25° 44' 26.088" N 89° 15' 40.104" E	OR482100
Joy-Le-30	2022.01.27	<i>Citrus limon</i>	Panchbibbi, Joypurhat	<i>Thrips florum</i>	25° 12' 27.1332" N 89° 4' 25.7592" E	OR482101
Bag-Mari-Khul4.3	2022.02.14	<i>Calendula arvensis</i>	Chitolmari, Bagerhat	<i>Microcephalothrips abdominalis</i>	22° 39' 32.616" N 89° 48' 25.236" E	OR482102
Dinaj-SP-A1.3	2022.12.04	<i>Ipomoea batatas</i>	Parbotipur Badarganj	<i>Dendrothripoides innoxius</i>	25° 44' 26.088" N 89° 15' 40.104" E	OR482103
Dinaj-SP-A1.4	2022.12.04	<i>Ipomoea batatas</i>	Parbotipur Badarganj	<i>Dendrothripoides innoxius</i>	25° 44' 26.088" N 89° 15' 40.104" E	OR482104
Brah-Ga-G1.2	2023.02.03	<i>Allium sativum</i>	Brahmanbaria	<i>Thrips tabaci</i>	23° 57' 50.9112" N	OR482105

Brah-Ga-G1.3	2023.02.03	<i>Allium sativum</i>	Brahmanbaria	<i>Thrips tabaci</i>	91° 7' 5.8836" E 23° 57' 50.9112" N	OR482106
Brah-Ga-G1.4	2023.02.03	<i>Allium sativum</i>	Brahmanbaria	<i>Thrips tabaci</i>	91° 7' 5.8836" E 23° 57' 50.9112" N	OR482107
Rang-Ro-4.2	2021.11.17	<i>Rosa scinensis</i>	Soddopuscorni, Rangpur	<i>Frankliniella intonsa</i>	91° 7' 5.8836" E 25° 44' 26.088" N	OR482108
Lal-Br-18.1	2022.01.19	<i>Solanum melongena</i>	Kakina, Kaliganj, Lalmonirhut	<i>Frankliniella intonsa</i>	89° 15' 40.104" E 23° 43' 15.996" N	OR482109
Lal-Pump- 20.4	2022.01.19	<i>Cucurbita moschata</i>	Biman Bandor, Sadar, Lalmonirhut	<i>Frankliniella intonsa</i>	88° 14' 24.864" E 25° 44' 26.088" N	OR482110
Gazi-Ro-R1.3	2022.12.22	<i>Rosa scinensis</i>	Gazipur	<i>Astrothrips tumiceps</i>	89° 15' 40.104" E 24° 5' 44.9448" N	OR482111
Brah-Be-1.2	2023.02.03	<i>Phaseolus vulgaris</i>	Brahmanbaria	<i>Megalurothrips usitatus</i>	90° 24' 45.0756" E 23° 57' 50.9112" N	OR482112
Rang-Bi-33.3	2022.03.04	<i>Momordica charantia</i>	Kalirhat, Badarganj Rangpur	<i>Megalurothrips usitatus</i>	91° 7' 5.8836" E 25° 44' 26.088" N	OR482113
Nil-Yard-16	2021.12.28	<i>Vigna unguiculata</i>	Kuthipara, Sadar, Nilphamari	<i>Megalurothrips usitatus</i>	89° 15' 40.104" E 25° 56' 35.232" N	OR482114
Dinaj-Be-10	2021.12.24	<i>Phaseolus vulgaris</i>	Pakerhut, Khansama, Dinajpur	<i>Megalurothrips usitatus</i>	89° 3' 48.744" E 25° 37' 18.8004" N	OR482115
Rang-Br-9	2021.11.17	<i>Solanum melongena</i>	Palichora, Mithapukur, Rangpur	<i>Megalurothrips usitatus</i>	88° 38' 18.5604" E 25° 44' 26.088" N	OR482116
Rang-Be-8	2021.11.17	<i>Phaseolus vulgaris</i>	Palichora, Mithapukur, Rangpur	<i>Megalurothrips usitatus</i>	89° 15' 40.1004" E 25° 44' 26.088" N	OR482117
Khag-Be-K3	2022.11.26	<i>Phaseolus vulgaris</i>	Khagrachori	<i>Megalurothrips usitatus</i>	89° 15' 40.1004" E 23° 4' 19.8876" N	OR482118
Rang-Be-8.1	2021.11.17	<i>Phaseolus vulgaris</i>	Palichora, Mithapukur, Rangpur	<i>Megalurothrips usitatus</i>	92° 0' 34.2324" E 25° 44' 26.088" N	OR482119
Rang-Ro-D1.1	2023.01.03	<i>Rosa scinensis</i>	Badarganj, Rangpur	<i>Megalurothrips usitatus</i>	89° 15' 40.1004" E 25° 44' 26.088" N	OR482120
Nil-SG-17	2021.12.28	<i>Luffa cylindrica</i>	Kuthipara, Sadar, Nilphamari	<i>Megalurothrips usitatus</i>	89° 15' 40.104" E 25° 56' 35.232" N	OR482121
Lal-Be-19.1	2022.01.19	<i>Phaseolus vulgaris</i>	Kakina, Kaliganj, Lalmonirhut	<i>Megalurothrips usitatus</i>	89° 3' 48.744" E 23° 43' 15.996" N	OR482122
Nil-Be-15.3	2021.12.28	<i>Phaseolus vulgaris</i>	Kuthipara, Sadar, Nilphamari	<i>Megalurothrips usitatus</i>	88° 14' 24.864" E 25° 56' 35.232" N	OR482123

Rang-Be-2.4	2021.11.17	<i>Phaseolus vulgaris</i>	Sankarpur, Badarganj, Rangpur	<i>Megalurothrips usitatus</i>	25° 40' 11.1288" N 89° 3' 19.764" E	OR482124
Dinaj-Mus-13	2021.12.24	<i>Brassica rapa</i>	Pakerhut, Khansama, Dinajpur	<i>Megalurothrips distalis</i>	25° 37' 18.8004" N 88° 38' 18.5604" E	OR482125
Rang-Ro-D1.3	2023.01.03	<i>Rosa scinensis</i>	Badarganj, Rangpur	<i>Megalurothrips distalis</i>	25° 44' 26.088" N 89° 15' 40.104" E	OR482126
Dinaj-Ch-47.3	2022.07.14	<i>Capsicum annuum</i>	Parbotipur, Dinajpur	<i>Scirtothrips dorsalis</i>	25° 37' 18.804" N 88° 38' 18.564" E	OR482127
Dinaj-Ch-47.4	2022.07.14	<i>Capsicum annuum</i>	Parbotipur, Dinajpur	<i>Scirtothrips dorsalis</i>	25° 37' 18.804" N 88° 38' 18.564" E	OR482128
Joy- Ch-31.3	2022.01.27	<i>Capsicum annuum</i>	Panchbibi, Joypurhat	<i>Scirtothrips dorsalis</i>	25° 12' 27.1332" N 89° 4' 25.7592" E	OR482129
Dinaj-SP-A1.1	2022.12.04	<i>Ipomoea batatas</i>	Parbotipur Badarganj	<i>Bathrips melanicornis</i>	25° 44' 26.088" N 89° 15' 40.104" E	OR482130
Raj-Mari-R2.1	2022.07.23	<i>Calendula arvensis</i>	Rajshahi	<i>Ayyaria chaetophora</i>	24° 21' 48.9168" N 88° 37' 26.8968" E	OR482131
Raj-Ch-R2.3	2022.07.23	<i>Calendula arvensis</i>	Rajshahi	<i>Ayyaria chaetophora</i>	24° 21' 48.9168" N 88° 37' 26.8968" E	OR482132
Raj-Ch-R3.1	2022.07.23	<i>Calendula arvensis</i>	Rajshahi	<i>Ayyaria chaetophora</i>	24° 21' 48.9168" N 88° 37' 26.8968" E	OR482133

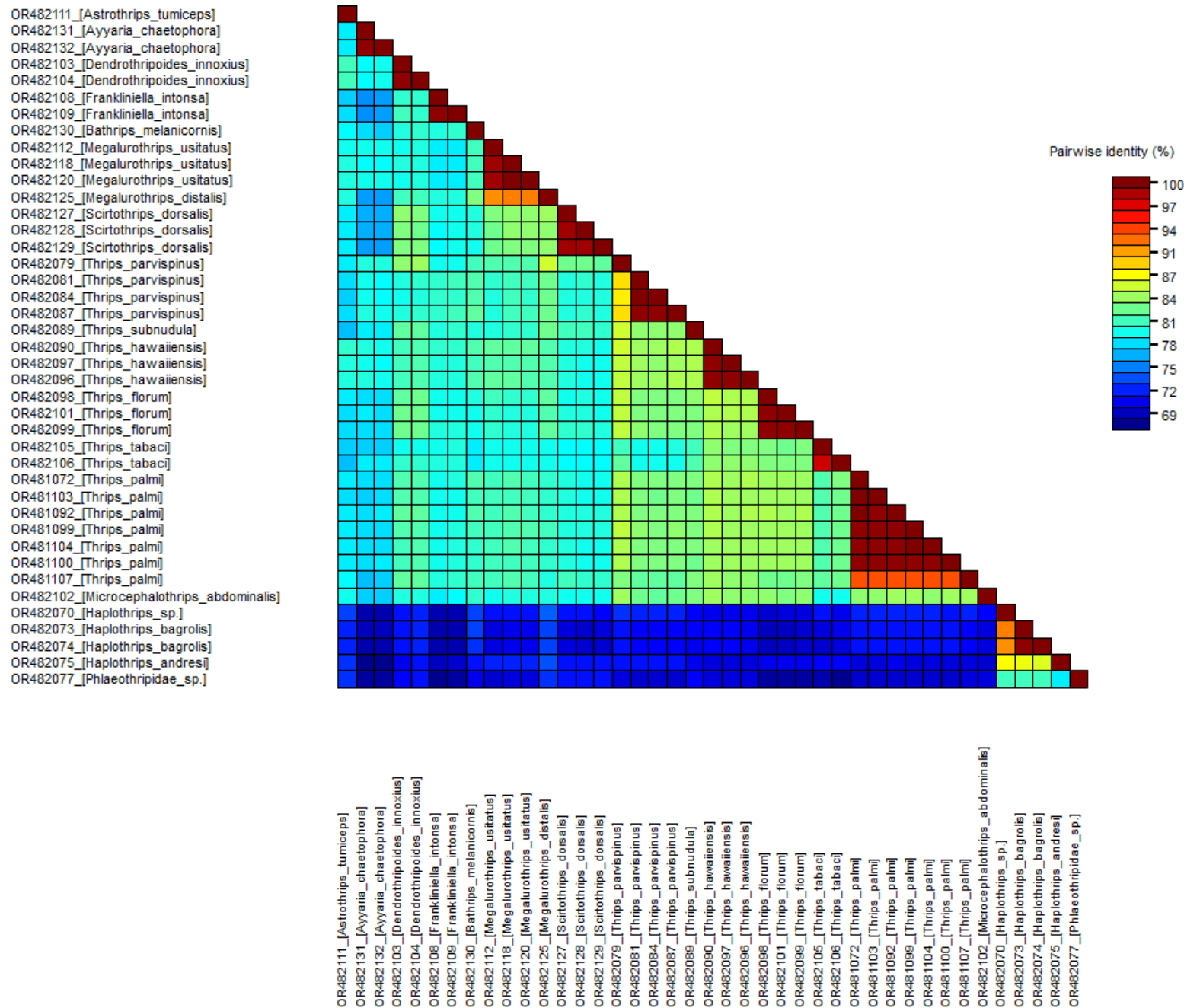


Figure S1. Pairwise nucleotide sequences identity color distance matrix for thrips species calculated by SDT v1.2.

Table S2. Inter-species divergence of thrips in Bangladesh, p-distance at lower left and Kimura 2 parameters at upper right and intraspecific distances showed in the text

Species	<i>Thrips palmi</i>	<i>Thrips parvispinus</i>	<i>Thrips hawaiiensis</i>	<i>Thrips florum</i>	<i>Thrips tabaci</i>	<i>Thrips subnudula</i>	<i>Frankliniella intonsa</i>	<i>Megalurothrips usitatus</i>	<i>Megalurothrips distalis</i>	<i>Scirtothrips dorsalis</i>	<i>Ayyaria chaetophora</i>	<i>Haplothrips</i> sp.	<i>Haplothrips bagrolis</i>	<i>Haplothrips andresi</i>	<i>Phlaeothripidae</i> sp.	<i>Dendrothripoides innoxius</i>	<i>Microcephalothrips abdominalis</i>	<i>Astrothrips tumiceps</i>	<i>Bathrips melanicornis</i>
<i>Thrips palmi</i>	-	0.1958	0.1726	0.1754	0.1902	0.1868	0.2328	0.2016	0.2184	0.2247	0.2510	0.3651	0.3689	0.4070	0.3895	0.1996	0.1811	0.2364	0.1984
<i>Thrips parvispinus</i>	0.1718	-	0.1634	0.1904	0.2286	0.1814	0.2334	0.2113	0.1897	0.2269	0.2265	0.3859	0.4008	0.3995	0.3955	0.2251	0.1915	0.2399	0.2005
<i>Thrips hawaiiensis</i>	0.1539	0.1461	-	0.1655	0.1857	0.1665	0.2149	0.1875	0.1958	0.2119	0.2140	0.3931	0.3902	0.4127	0.3969	0.2096	0.1791	0.2213	0.1962
<i>Thrips florum</i>	0.1557	0.1674	0.1480	-	0.1820	0.1935	0.2338	0.2205	0.2006	0.2337	0.2507	0.4030	0.4045	0.3996	0.4353	0.1937	0.1842	0.2366	0.2365
<i>Thrips tabaci</i>	0.1672	0.1959	0.1640	0.1606	-	0.2121	0.2190	0.2244	0.2315	0.2111	0.2405	0.3987	0.4176	0.3932	0.4263	0.2164	0.2361	0.2550	0.2399
<i>Thrips subnudula</i>	0.1646	0.1605	0.1489	0.1702	0.1836	-	0.2123	0.2204	0.1958	0.2166	0.2322	0.3963	0.3915	0.4094	0.3739	0.2044	0.1809	0.2576	0.2265
<i>Frankliniella intonsa</i>	0.1992	0.1989	0.1865	0.1994	0.1888	0.1844	-	0.2241	0.2143	0.2314	0.2701	0.4310	0.4339	0.4347	0.4177	0.2012	0.2392	0.2429	0.2200
<i>Megalurothrips usitatus</i>	0.1767	0.1839	0.1659	0.1909	0.1939	0.1903	0.1936	-	0.0952	0.1812	0.2229	0.4159	0.4204	0.3923	0.4223	0.2202	0.2349	0.2419	0.2000
<i>Megalurothrips distalis</i>	0.1895	0.1673	0.1723	0.1759	0.1989	0.1721	0.1860	0.0893	-	0.1765	0.2690	0.3651	0.3837	0.3682	0.3713	0.2042	0.2239	0.2363	0.1986
<i>Scirtothrips dorsalis</i>	0.1940	0.1956	0.1844	0.2007	0.1834	0.1879	0.1982	0.1610	0.1573	-	0.2579	0.4029	0.4161	0.3899	0.3771	0.1814	0.2254	0.2402	0.2253
<i>Ayyaria chaetophora</i>	0.2120	0.1947	0.1859	0.2128	0.2052	0.1989	0.2262	0.1926	0.2256	0.2180	-	0.4380	0.4387	0.4751	0.4365	0.2332	0.2481	0.2289	0.2327
<i>Haplothrips</i> sp.	0.2891	0.3016	0.3059	0.3117	0.3091	0.3078	0.3278	0.3190	0.2887	0.3117	0.3308	-	0.0887	0.1498	0.2161	0.3980	0.4064	0.3587	0.3866
<i>Haplothrips bagrolis</i>	0.2913	0.3103	0.3042	0.3125	0.3199	0.3050	0.3294	0.3218	0.3002	0.3193	0.3317	0.0832	-	0.1486	0.2113	0.3931	0.4229	0.3710	0.3931
<i>Haplothrips andresi</i>	0.3142	0.3096	0.3174	0.3098	0.3059	0.3155	0.3297	0.3051	0.2906	0.3040	0.3518	0.1358	0.1348	-	0.2579	0.4114	0.4195	0.3905	0.4061
<i>Phlaeothripidae</i> sp.	0.3038	0.3073	0.3082	0.3302	0.3250	0.2945	0.3199	0.3225	0.2925	0.2964	0.3308	0.1874	0.1836	0.2180	-	0.3708	0.4127	0.3771	0.4228
<i>Dendrothripoides innoxius</i>	0.1751	0.1940	0.1827	0.1706	0.1877	0.1788	0.1759	0.1907	0.1788	0.1611	0.1998	0.3088	0.3059	0.3164	0.2925	-	0.2227	0.2067	0.2224
<i>Microcephalothrips abdominalis</i>	0.1603	0.1684	0.1591	0.1625	0.2008	0.1606	0.2032	0.2016	0.1931	0.1946	0.2103	0.3136	0.3231	0.3212	0.3174	0.1922	-	0.2445	0.2073
<i>Astrothrips tumiceps</i>	0.2027	0.2051	0.1915	0.2027	0.2161	0.2180	0.2073	0.2068	0.2027	0.2055	0.1969	0.2849	0.2925	0.3040	0.2964	0.1807	0.2084	-	0.2393
<i>Bathrips melanicornis</i>	0.1740	0.1752	0.1723	0.2019	0.2046	0.1950	0.1898	0.1752	0.1740	0.1941	0.1989	0.3021	0.3059	0.3136	0.3231	0.1922	0.1797	0.2046	-

Table S3. A pairwise comparison of COI sequences of thrips species from Bangladesh during 2021-2023

[illegible]