

Figure S1: GC-MS total ion current chromatograms of chemical components derived from the Dufour's gland in different castes of *C. japonicus* (SPME method). The peak numbers correspond to compound numbers in Table 1.

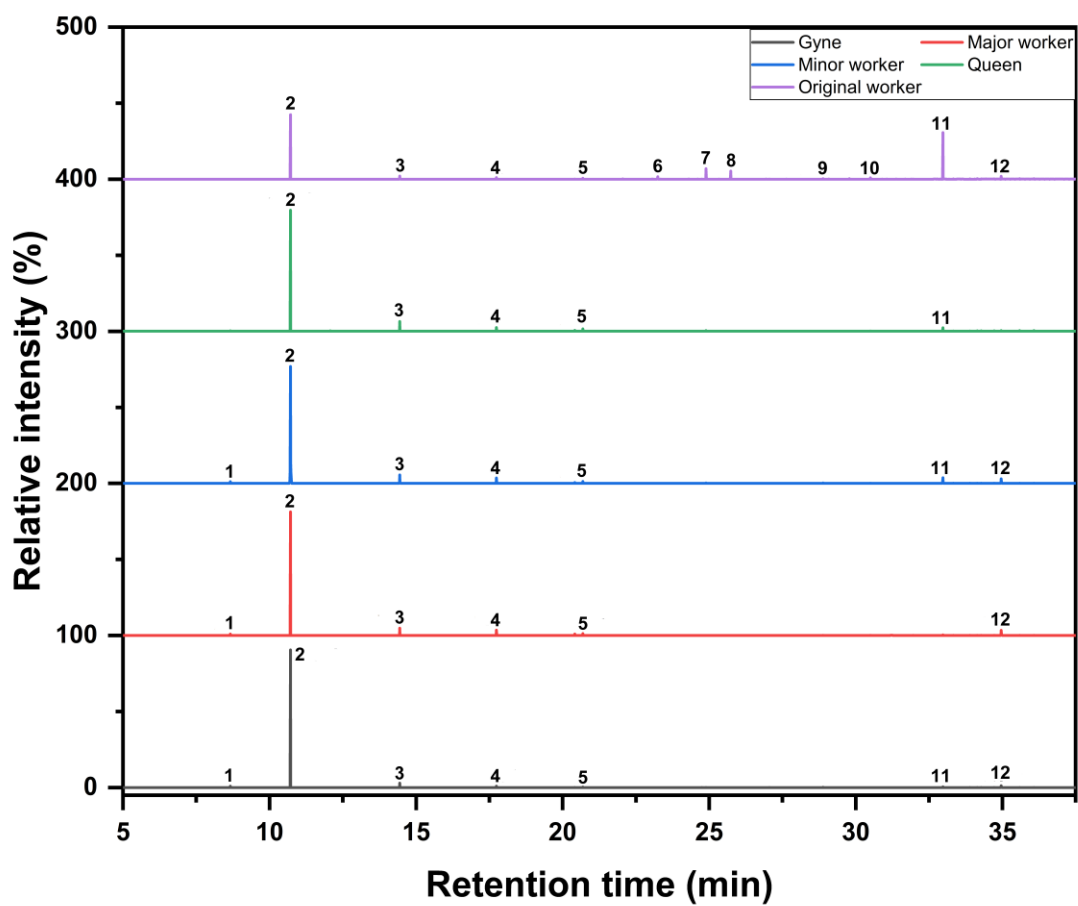


Figure S2: GC-MS total ion current chromatograms of chemical components derived from Dufour's gland in different castes of *C. japonicus* (hexane solution method). The peak numbers correspond to compound numbers in Table 2.

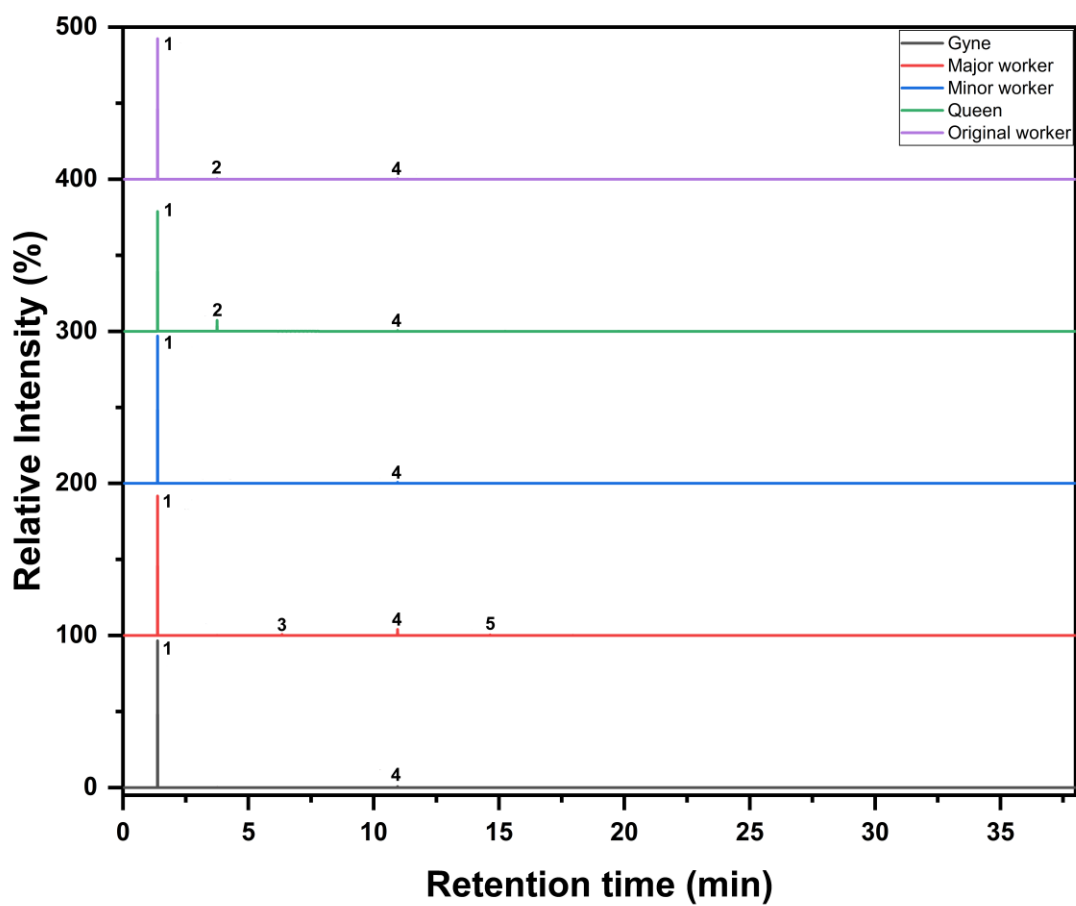


Figure S3: GC-MS total ion current chromatograms of chemical components derived from the venom gland in different castes of *C. japonicus* (SPME method). The peak numbers correspond to compound numbers in Table 3.

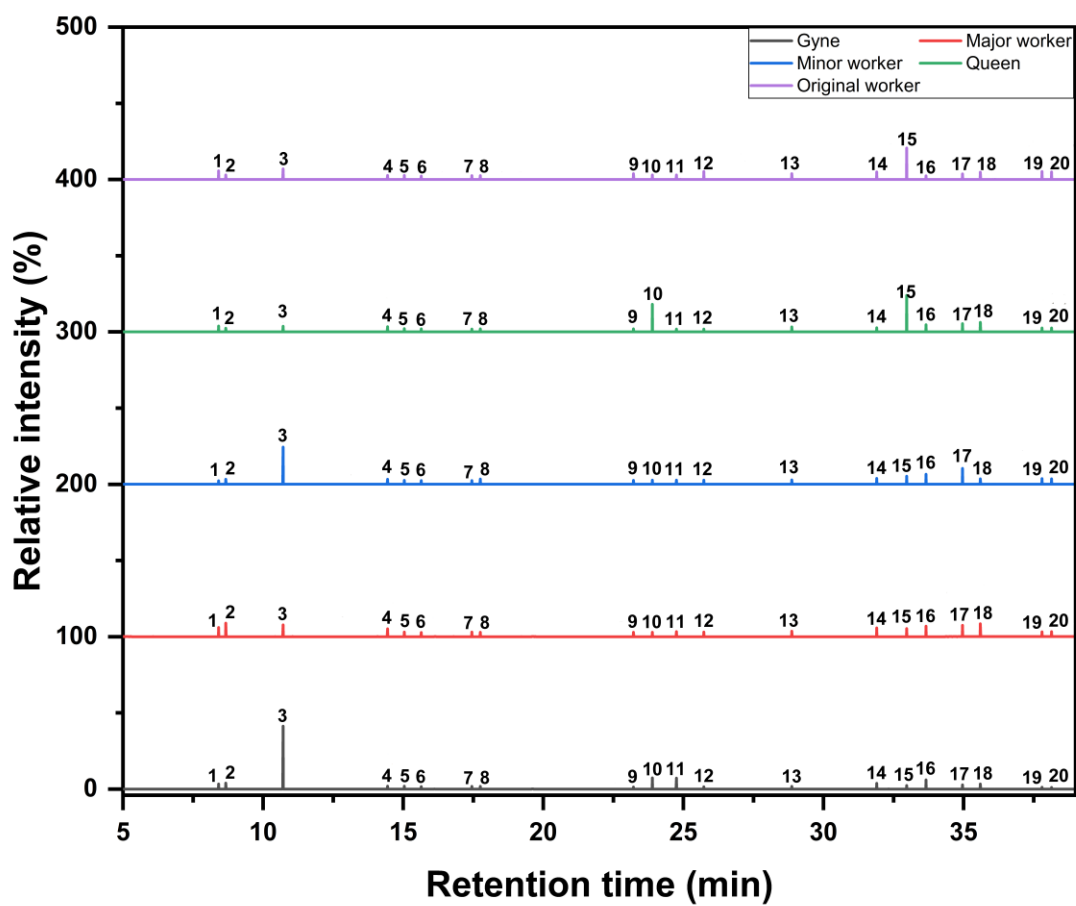


Figure S4: GC-MS total ion current chromatograms of chemical components derived from the venom gland in different castes of *C. japonicus* (hexane solution). The peak numbers correspond to compound numbers in Table 4.