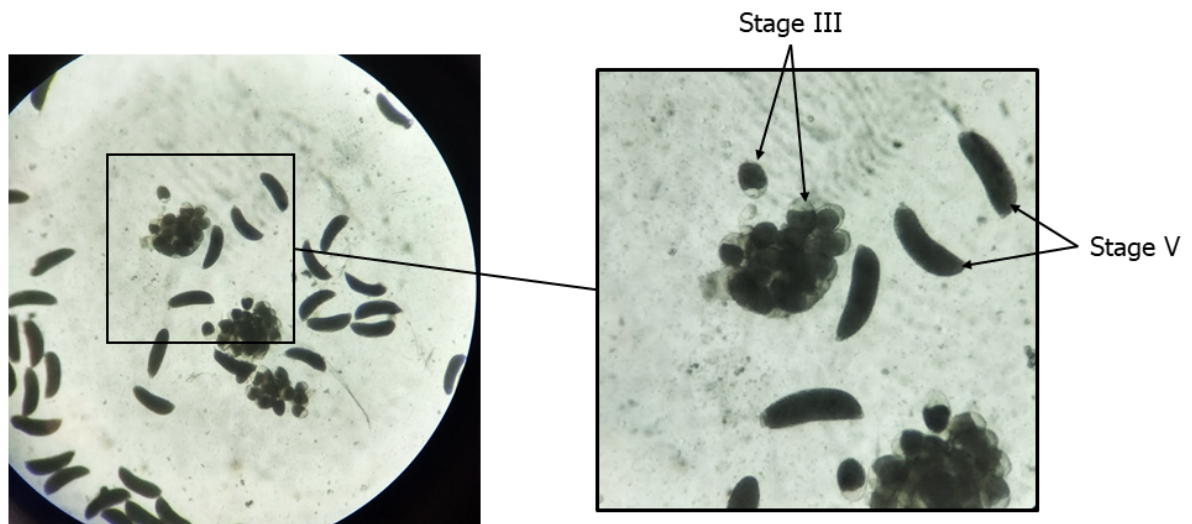


**Table S1.** Sterile and fecund *An. gambiae* RSP females by method and treatment group with the sensitivity, specificity, positive predictive value (PPV), and negative predictive value (NPV).

	Oviposition			Dissection		
	PPF	Untreated	N total (%)	PPF	Untreated	N total (%)
<b>N sterile (%)</b>	113 (40.6)	133 (47.8)	246 (88.5)	54 (40.3)	38 (28.4)	92 (68.7)
<b>N fecund (%)</b>	1 (0.4)	31 (11.2)	32 (11.5)	0 (0.0)	42 (31.3)	42 (31.3)
<b>N total (%)</b>	114 (41.0)	164 (59.0)	278 (100.0)	54 (40.3)	80 (59.7)	134 (100.0)
<b>Sensitivity (%)</b>	99.1			100.0		
<b>Specificity (%)</b>	18.9			52.5		
<b>PPV (%)</b>	45.9			58.7		
<b>NPV (%)</b>	96.9			100.0		

**Table S2.** Prediction of PPF exposure to *An. gambiae* females during blinded dissections.

Prediction	Cylinder Assays				Tunnel Tests				
	Untreated	PPF	Olyset Net	Olyset Duo 20W	Untreated	PPF	PPF 20W	Olyset Net	Olyset Duo 20W
N true prediction	105	100	117	14	68	82	23	23	23
N false prediction	7	3	8	60	6	9	0	1	0
N with mixed eggs (no prediction)	3	2	2	10	1	3	0	0	4
Unpredicted (%)	2.6	1.9	1.6	11.9	1.3	3.2	0.0	0.0	14.8
<b>Correct prediction (%)</b>	93.8	97.1	93.6	18.9	91.9	90.1	100.0	95.8	100.0



**Figure S1.** Image taken from stereoscopic microscope comparing dissected eggs at Christophers' stage III (underdeveloped) and stage V (developed).