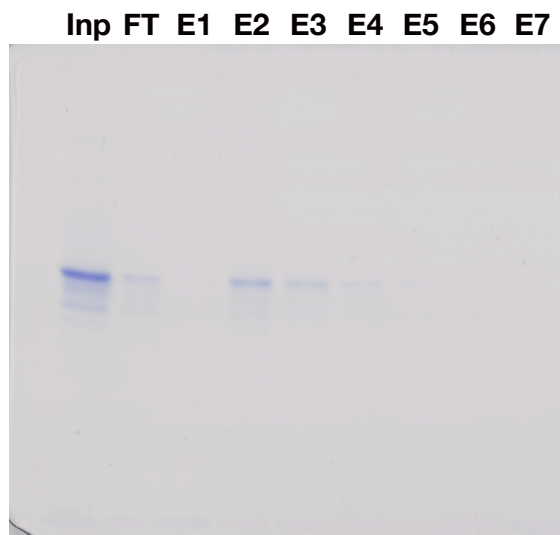


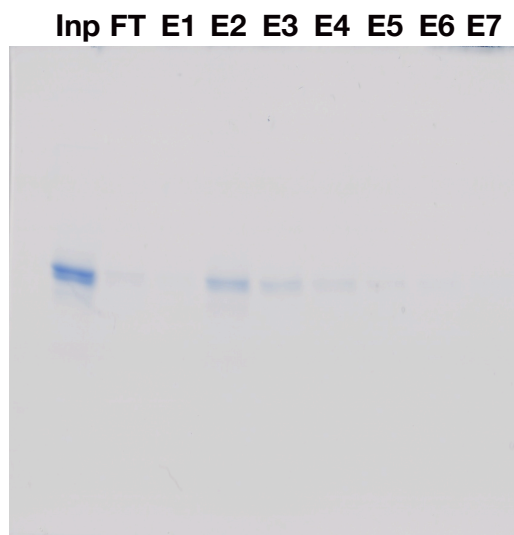
### A. Dmel\_Resilin



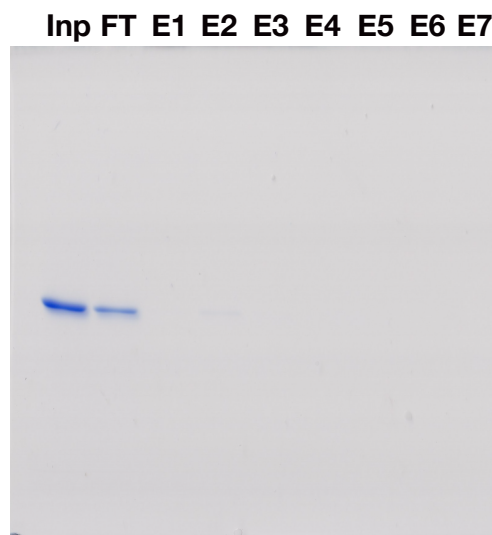
### B. Bmor\_CPR140



### C. Aste\_Resilin-r



### D. GST-His



**Figure S2.** Chitin-binding assay of recombinant proteins.

Two hundred  $\mu\text{g}$  of purified recombinant proteins for Dmel\_Resilin (A), Bmor\_CPR140 (B), and Aste\_Resilin-r (C) in 200  $\mu\text{l}$  of chitin-binding buffer were loaded onto a 200- $\mu\text{l}$  chitin column. The flow-through was loaded onto the same column four more times. After the column was washed well, the bound proteins were eluted with 200  $\mu\text{l}$  of 8 M urea in binding buffer 7 times. The recombinant protein without resilin fragment was also examined as a negative control (D). Aliquots of protein input (*Inp*), the final flow-through (*FT*), and the 1st – 7th elution fraction (*E1-7*) were analyzed by SDS - polyacrylamide gel electrophoresis.