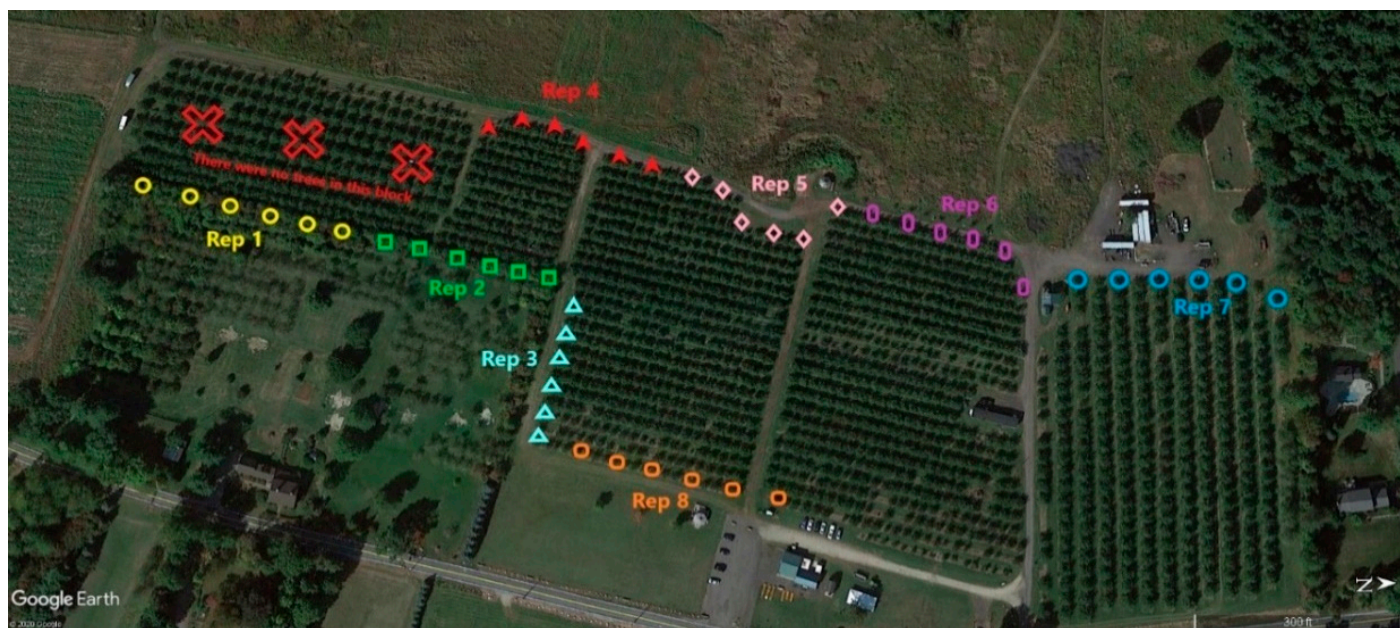
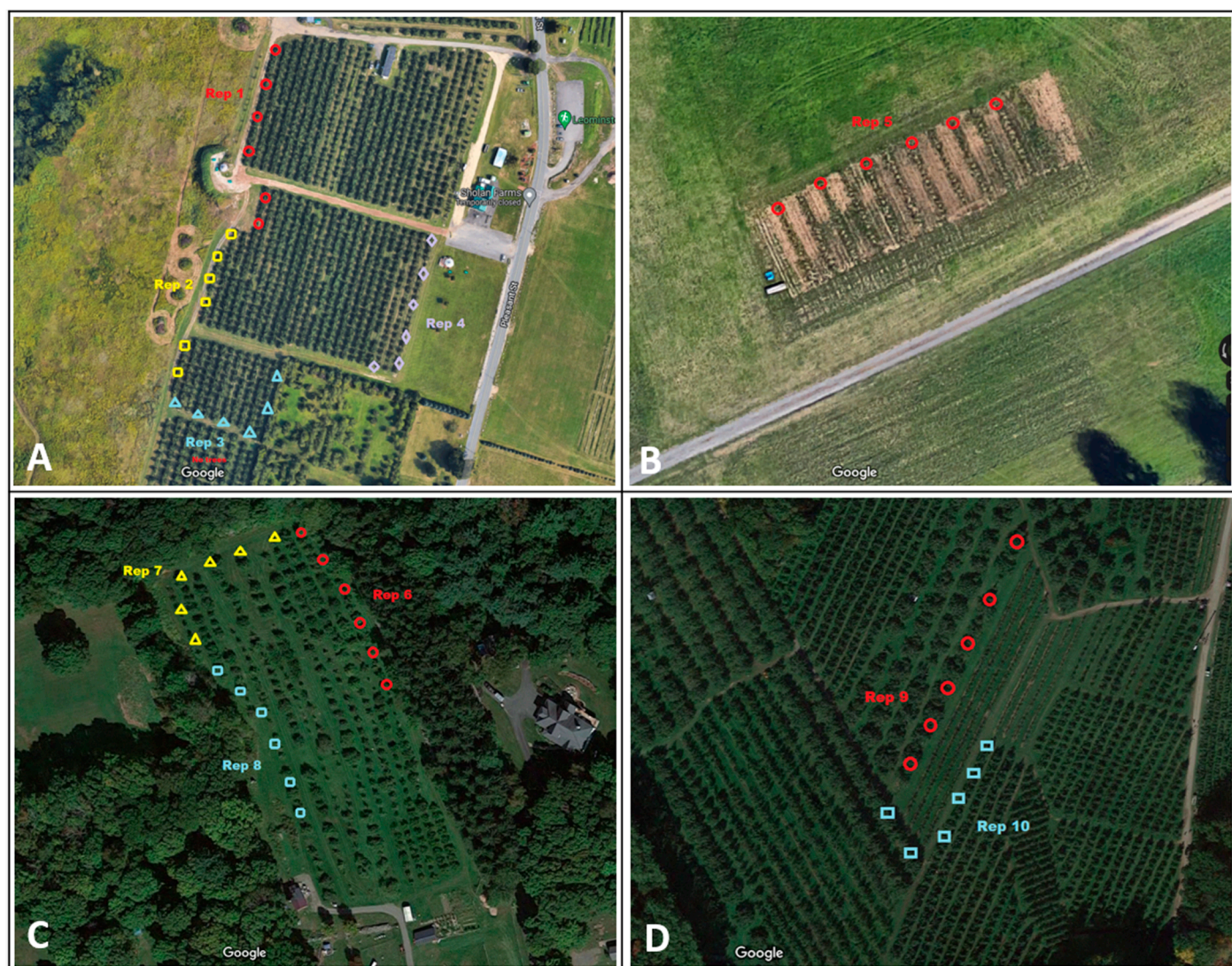


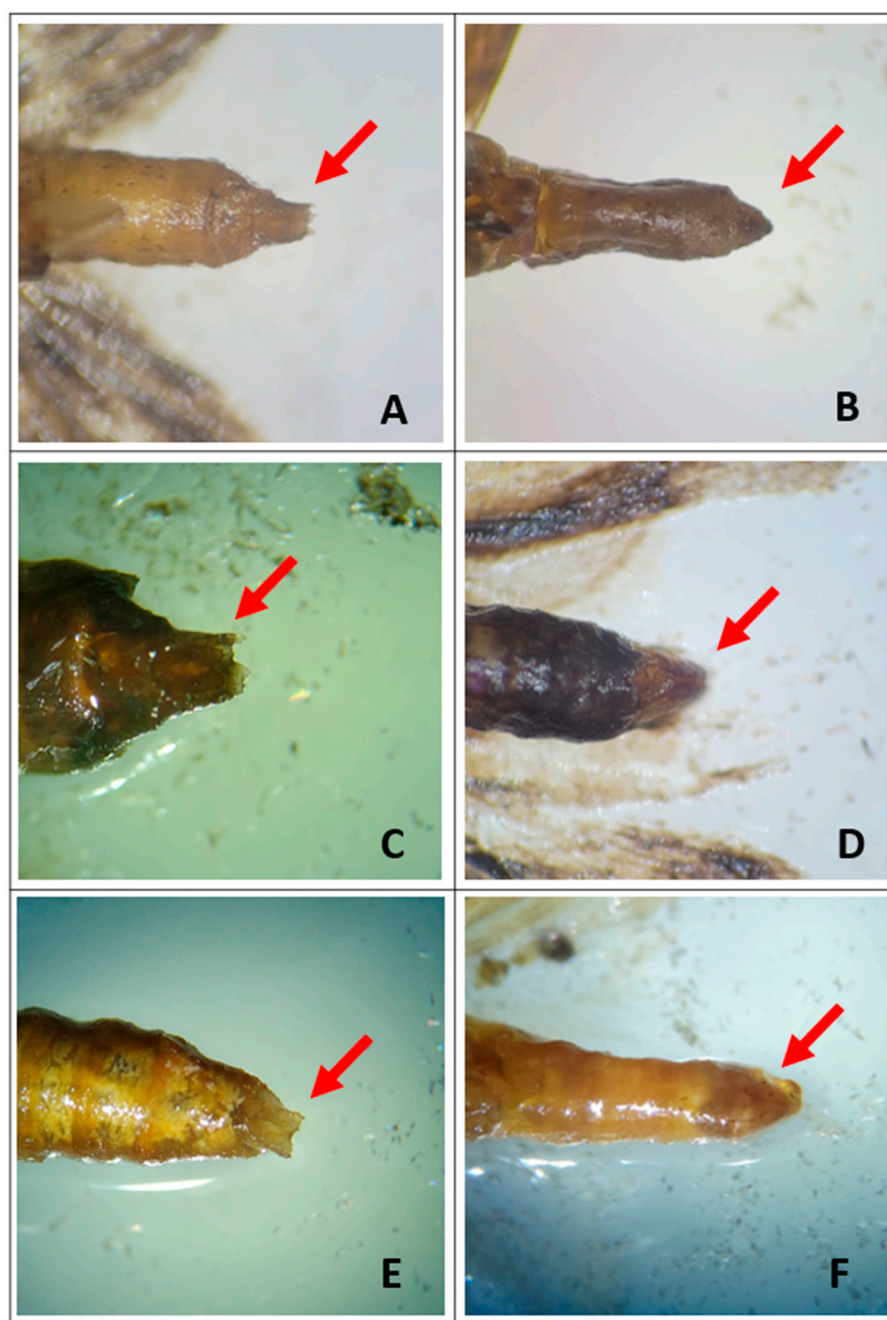
SUPPLEMENTAL FIGURES 1-4



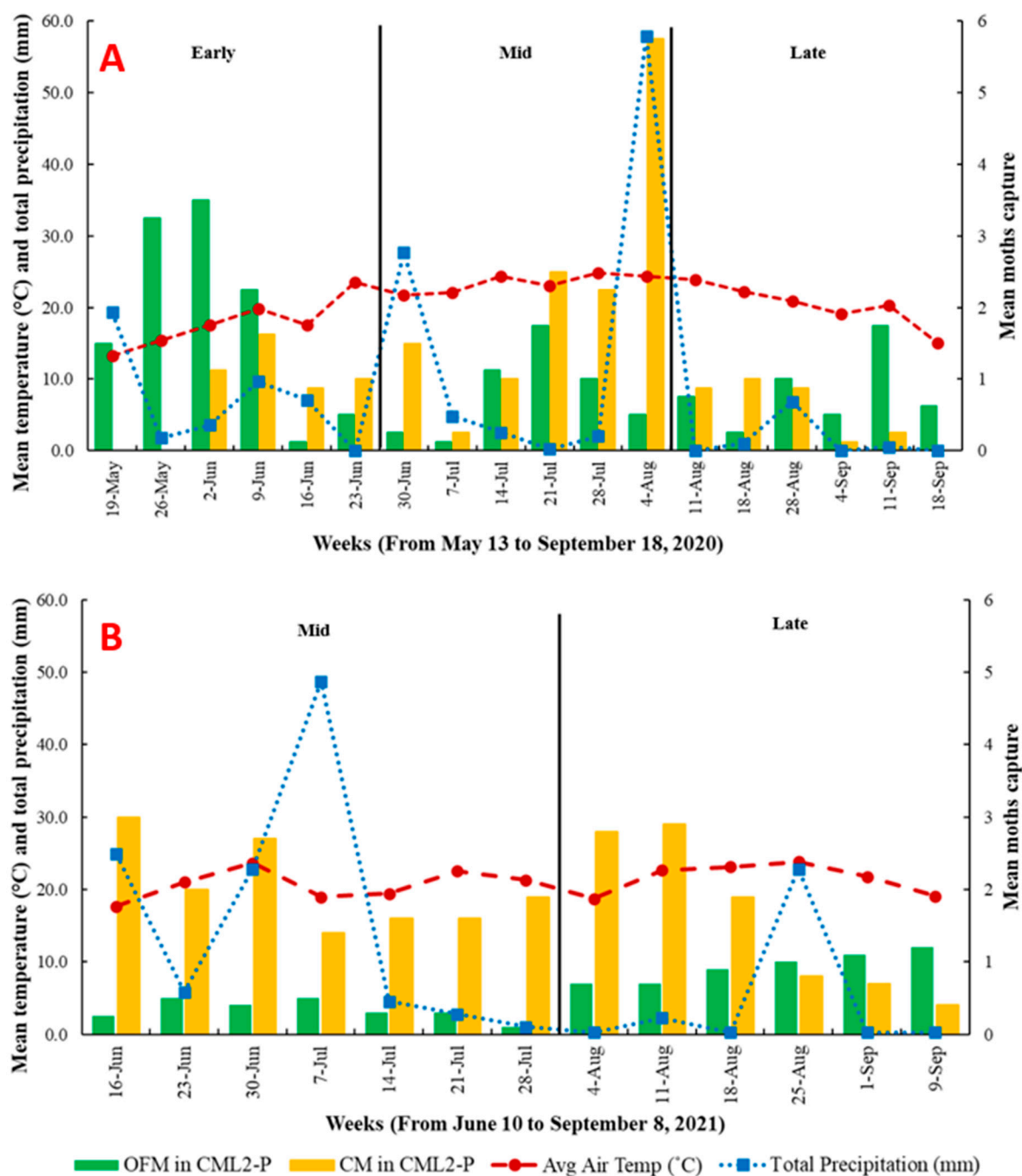
Supplemental Figure S1. Trap deployment along the perimeter of Sholan Farms in 2020.



Supplemental Figure S2. Trap deployment at (A) Sholan farms, (B) UMass Agricultural Learning Center, (C) Sentinel Farm, and (D) Honeypot Hill Orchards in 2021.



Supplemental Figure S3. Male genitalia (right) and female genitalia (left) of OFM (A,B), CM (C,D) and RBLR (E,F).



Supplemental Figure S4. Mean weekly captures of OFM (green bars) and CM (yellow bars) in early, mid, and late season during 2020 (A) and mid and late season during 2021 (B). Moth capture data correspond to the treatment with the pheromonal lure, CM L2-P. Mean temperature (°C) (red dotted lines) and total precipitation (mm) (blue dotted lines) were obtained from the Cornell University NEWA site using weather station data from Sholan Farms, Leominster, MA.