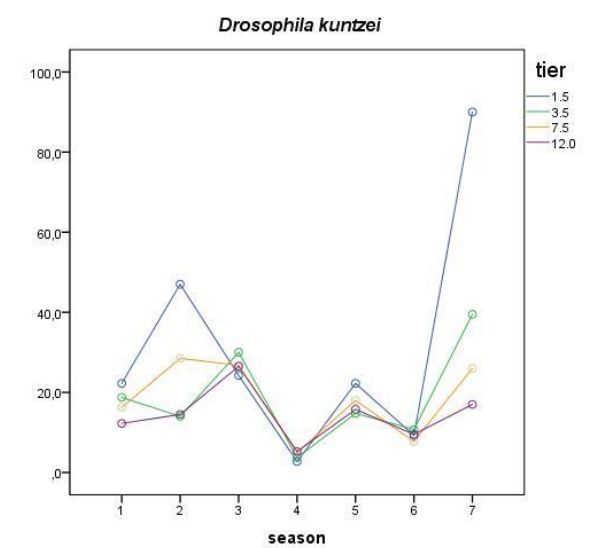
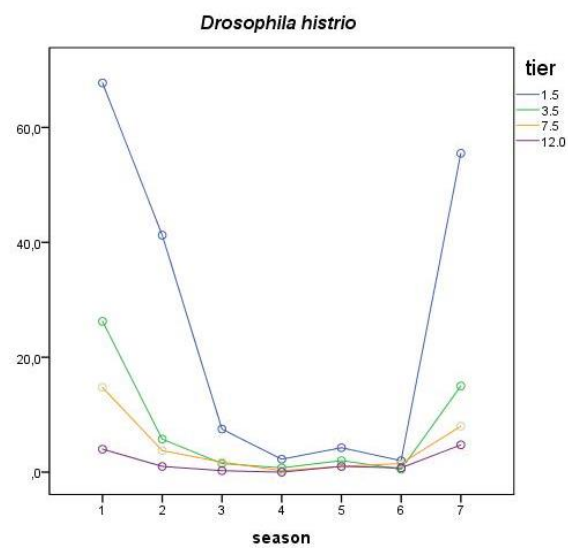
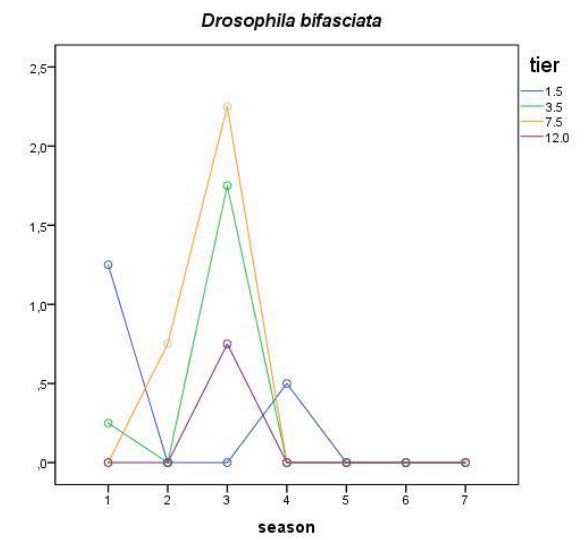
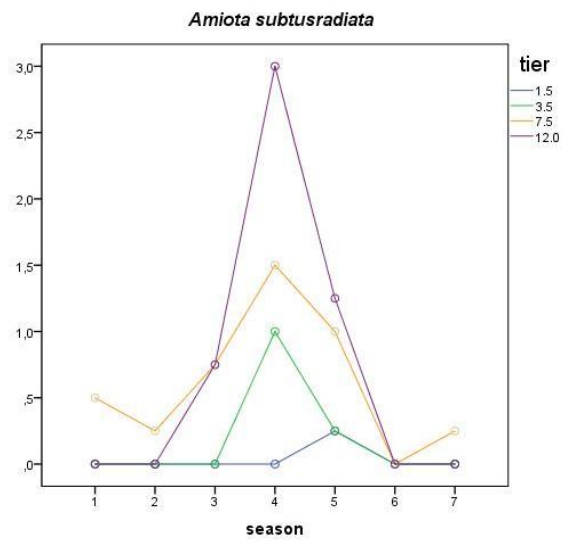
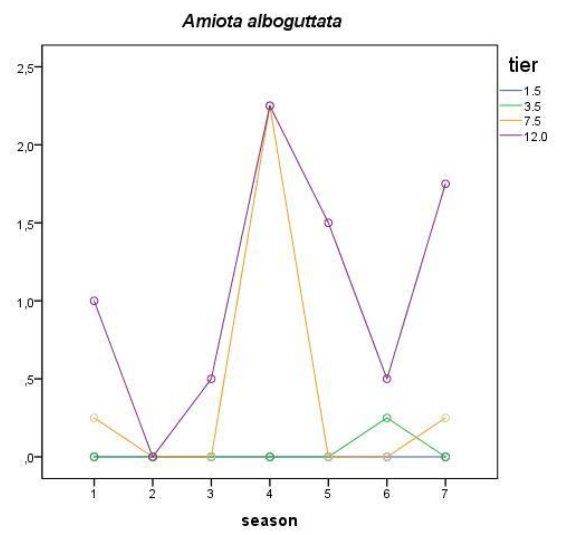
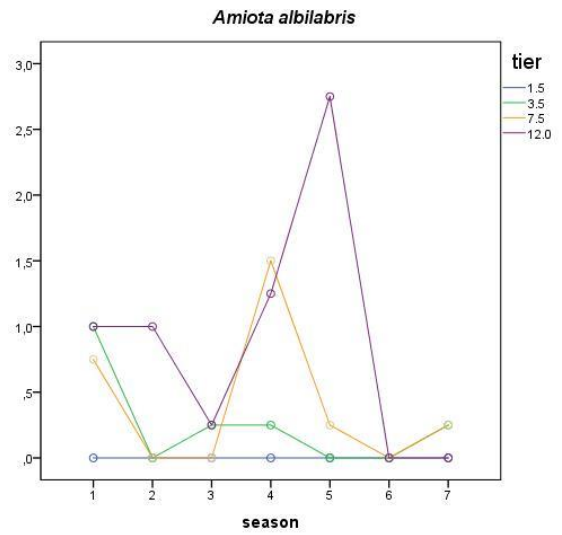


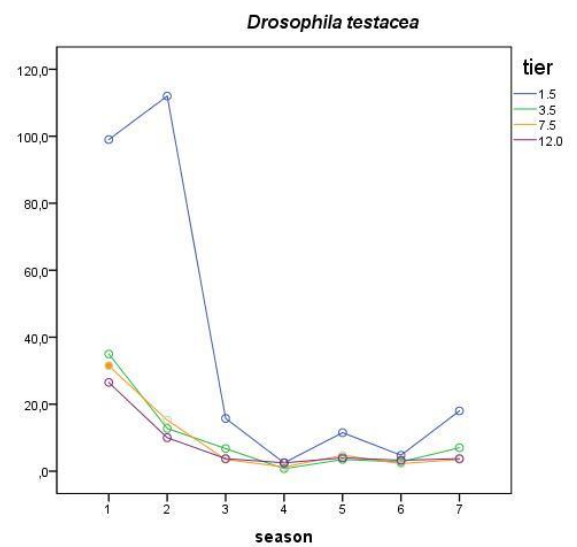
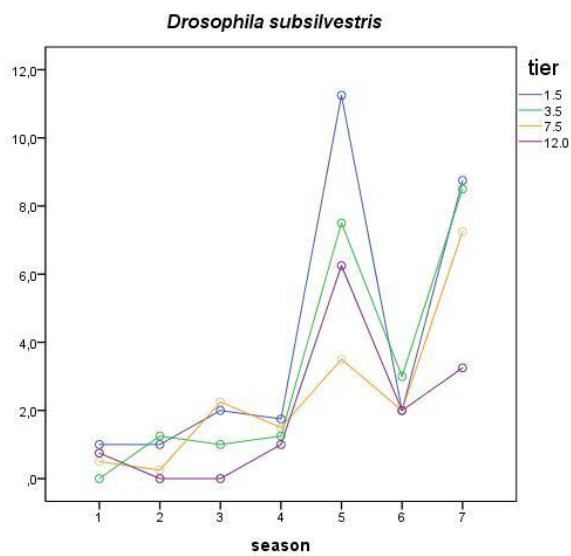
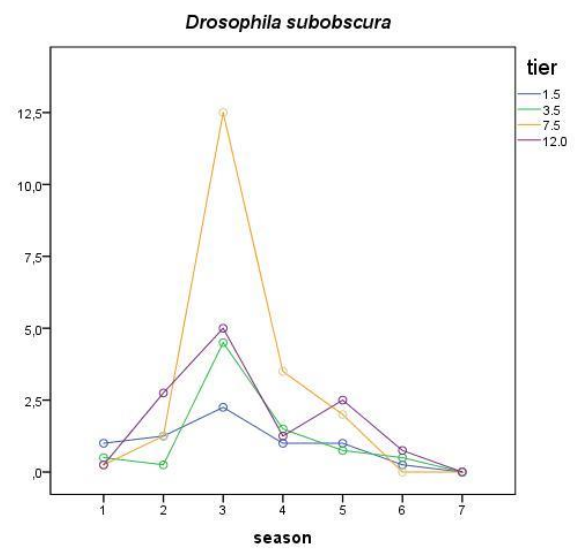
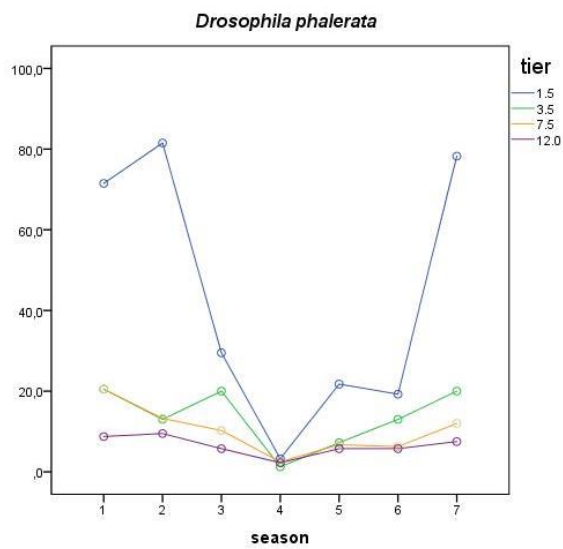
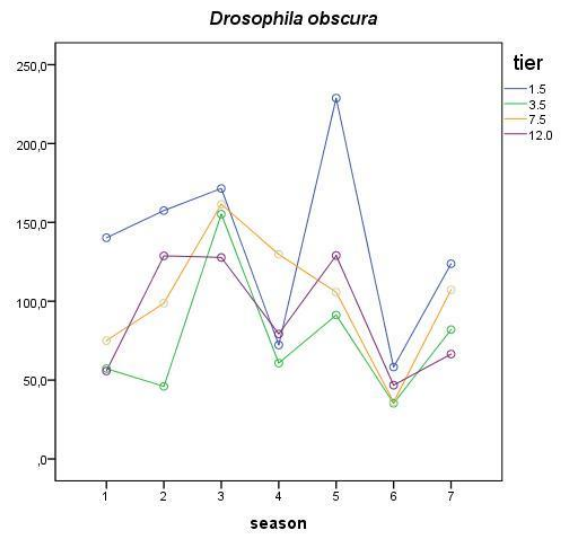
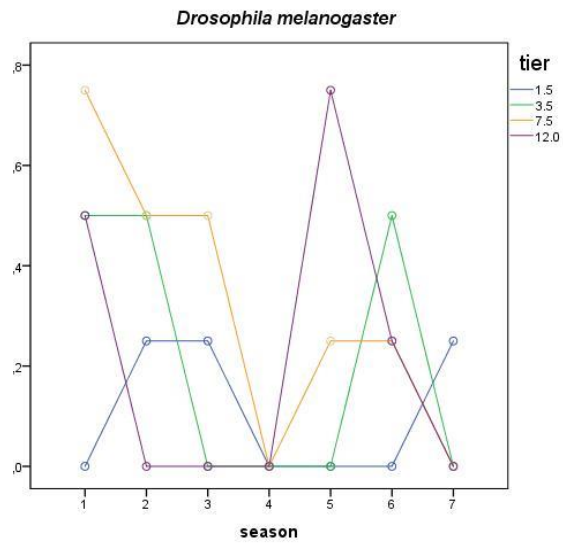
Supplementary materials

Table S1. Consistency of changes in the abundance of each species in the sites depending on the tier and depending on the time of collection of drosophilids.

Species	stratification of each level*				stratification of the abundance of samples at the sites by the time of collection *			
	W	χ^2	d.f.	p	W	χ^2	d.f.	p
<i>Amiota albilabris</i>	0.41	4.86	3	0.1823	0.55	13.09	6	0.0416
<i>Amiota alboguttata</i>	0.83	13.21	3	0.0042	0.21	4.98	6	0.5464
<i>Amiota subtusradiata</i>	0.32	3.82	3	0.2816	0.60	14.29	6	0.0266
<i>Amiota semivirgo</i>	0.20	2.38	3	0.4974	0.89	21.32	6	0.0016
<i>Leucophenga quinquemaculata</i>	0.33	3.92	3	0.2702	0.83	19.89	6	0.0029
<i>Drosophila histrio</i>	0.48	5.70	3	0.1272	0.89	17.86	6	0.0066
<i>Drosophila kuntzei</i>	1.00	12.00	3	0.0074	0.88	21.23	6	0.0017
<i>Drosophila phalerata</i>	0.68	8.10	3	0.0440	0.82	19.71	6	0.0031
<i>Drosophila testacea</i>	0.56	6.69	3	0.0825	0.78	18.75	6	0.0046
<i>Drosophila transversa</i>	0.48	5.70	3	0.1272	0.88	21.21	6	0.0017
<i>Drosophila bifasciata</i>	0.34	4.09	3	0.2519	0.62	14.83	6	0.0216
<i>Drosophila melanogaster</i>	0.24	2.83	3	0.4186	0.62	14.93	6	0.0208
<i>Drosophila obscura</i>	0.33	3.90	3	0.2725	0.37	8.90	6	0.1793
<i>Drosophila subobscura</i>	0.24	2.85	3	0.4153	0.47	11.36	6	0.0779
<i>Drosophila subsilvestris</i>	0.30	3.60	3	0.3080	0.86	17.19	6	0.0086
<i>Hirtodrosophila confusa</i>	0.16	1.92	3	0.5892	0.85	20.48	6	0.0023
<i>Scaptodrosophila rufifrons</i>	0.15	1.80	3	0.6149	0.66	15.78	6	0.0150

Stratification in each level* - sites are factors, trap heights are repeats; stratification of the abundance of samples at the sites by the time of collection * - sites are factors, collection seasons are repeats. Significant indicators of Wk are highlighted in bold.





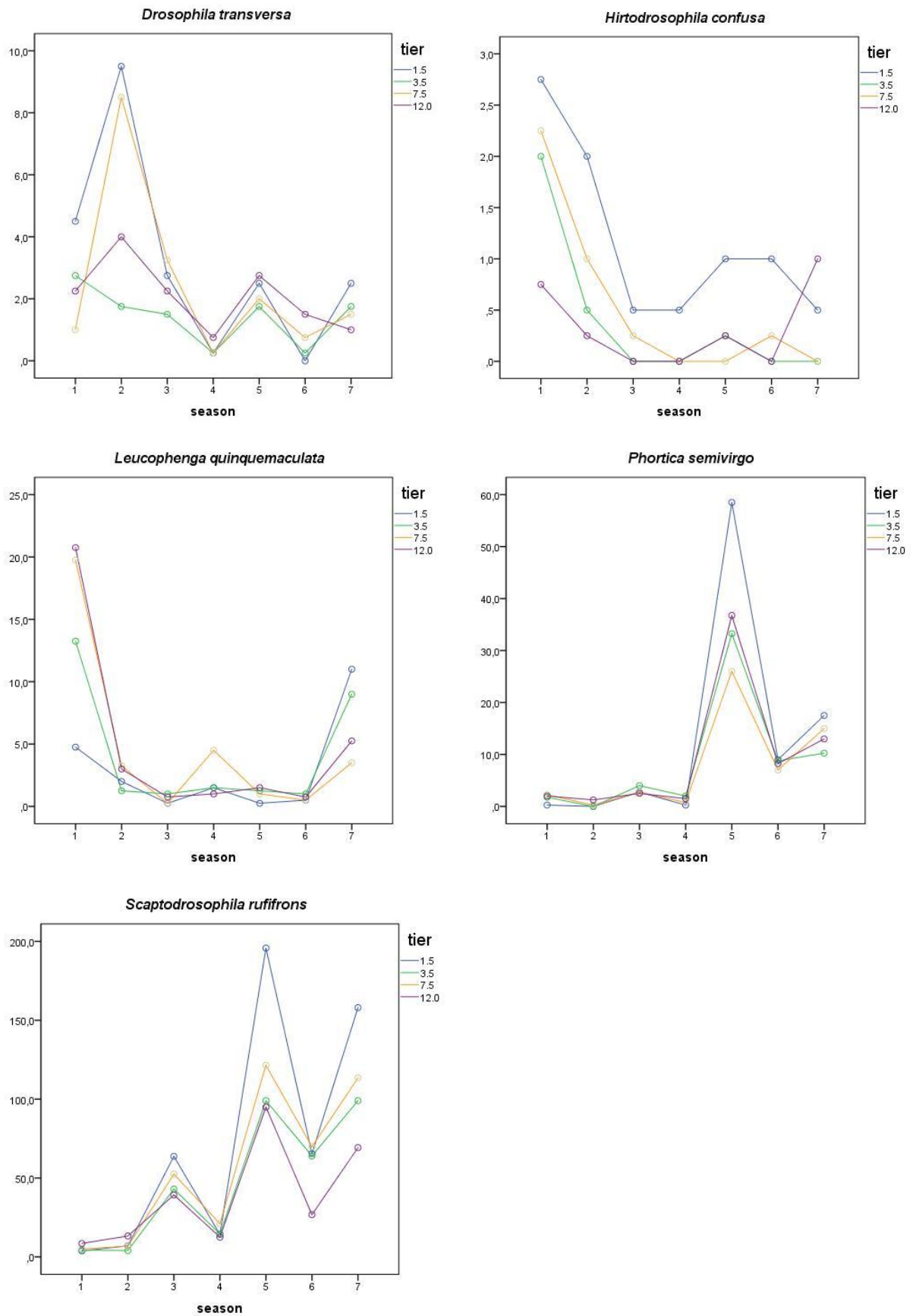


Figure S1. Seasonal changes in the abundance of drosophilids depending on the tier. There are seven collecting periods along the abscissa axis, from the first half of June to mid–September. On the ordinate axis are the marginal average numbers estimated by MANOVA. Lines corresponding to a certain tier are marked with color – 1.5 m – blue, 3.5 m – green, 7.5 m – gray, 12 m – purple. Species collected in an amount of less than 20 individuals are not represented.