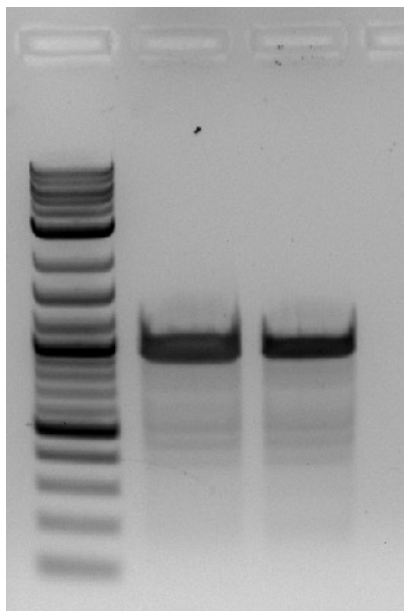


**Figure S1.** Original agarose gel electrophoresis images following T7 Endonuclease I (T7EI) assay used to generate main text Figure 3b (a), Figure 4 (b, c), and Figure 5 (d, e). Black arrows indicate T7-cleaved products.



**Figure S2.** T7 Endonuclease I (T7EI) assay of the *dcr-2* genomic region targeted by sgRNA2 performed on untreated Hsu. Duplicate gDNA samples were used. Non-specific bands were observed, comparable to those in the 'control sgRNA' treated samples in Figure 4.