

Figure S1. Opisthosoma development of *Pyemotes zhonghuajia* females on *Spodoptera litura* eggs.

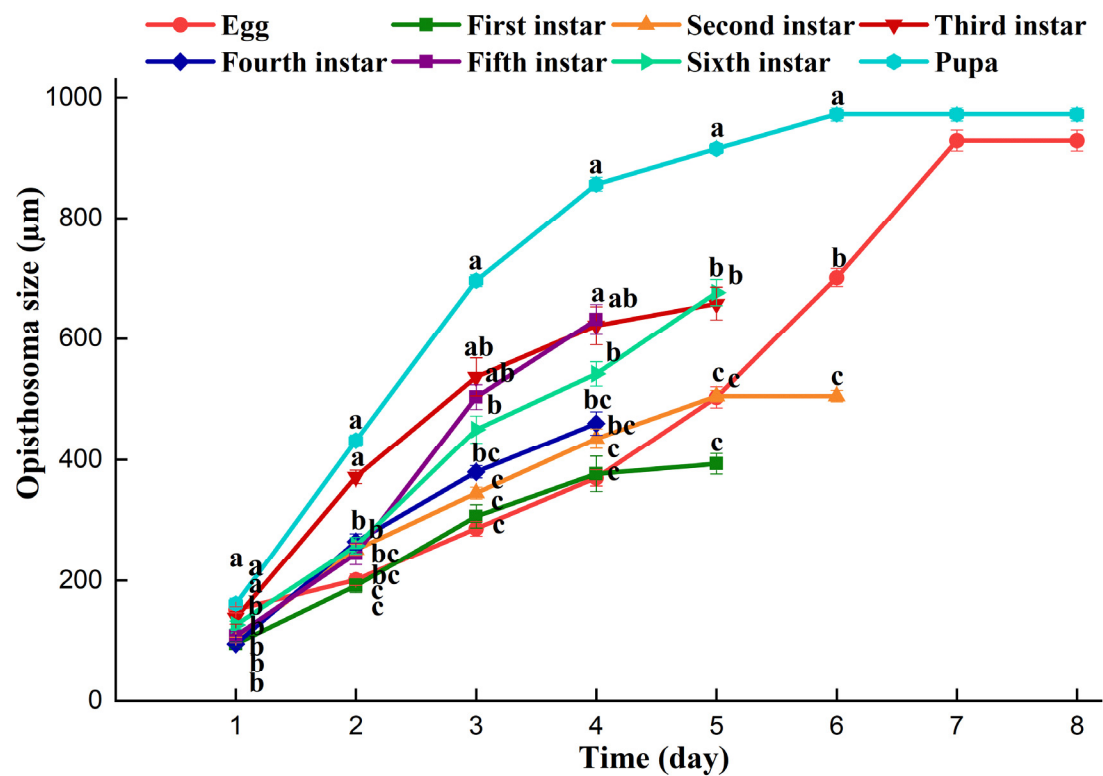


Figure S2. Opisthosoma size of *Pyemotes zhonghuajia* on different stages of *Spodoptera litura*. The different lower-case letters in each time near curve indicate that there are **significant** differences in the opisthosoma size of *P. zhonghuajia* (Tukey's honestly significant difference [HSD] test, $p < 0.05$).

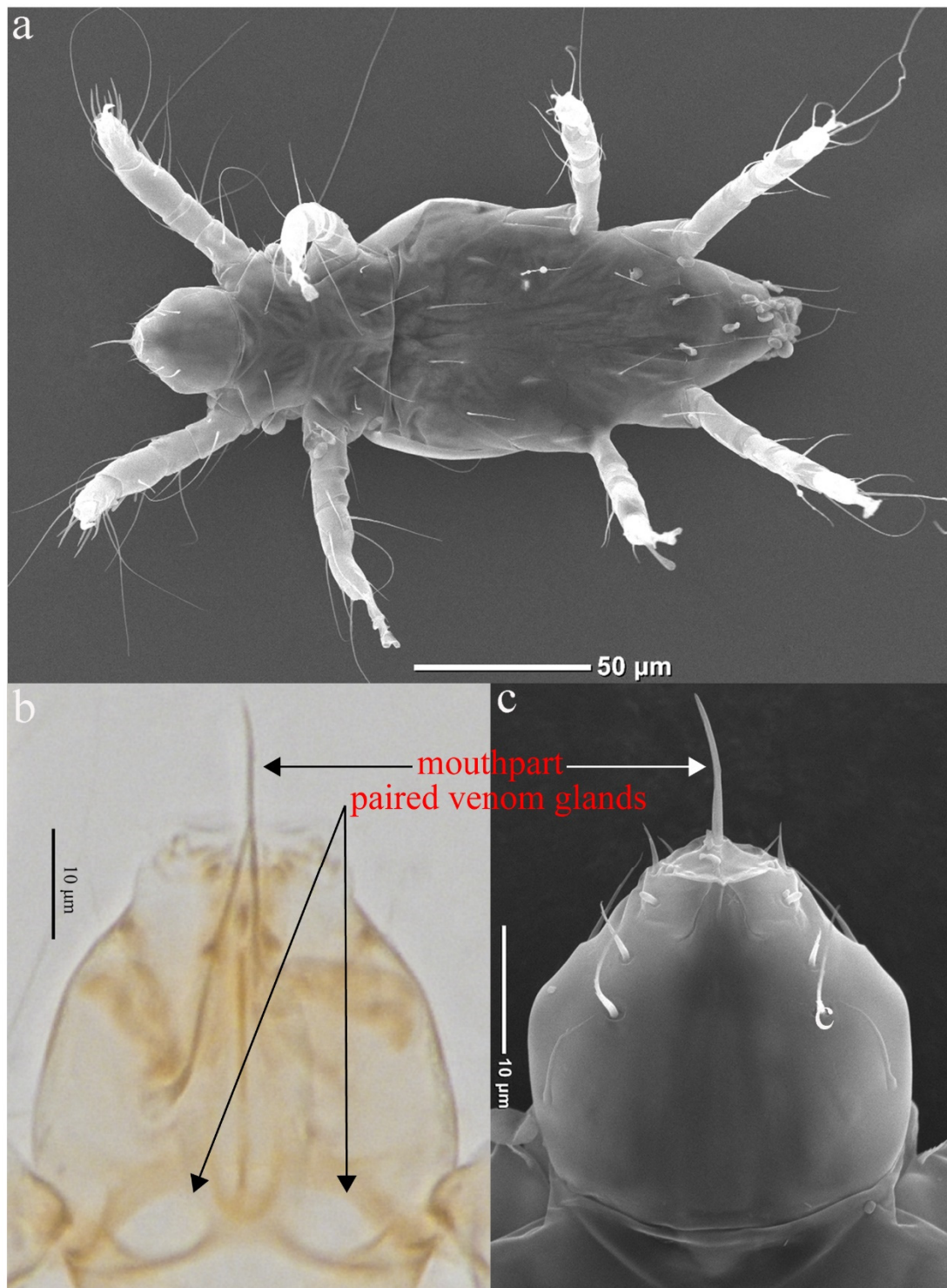


Figure S3. (a) A ventral view and (b, c) the pedipalps, including the mouthparts and paired venom glands, of an adult female *Pyemotes zhonghuaia*.