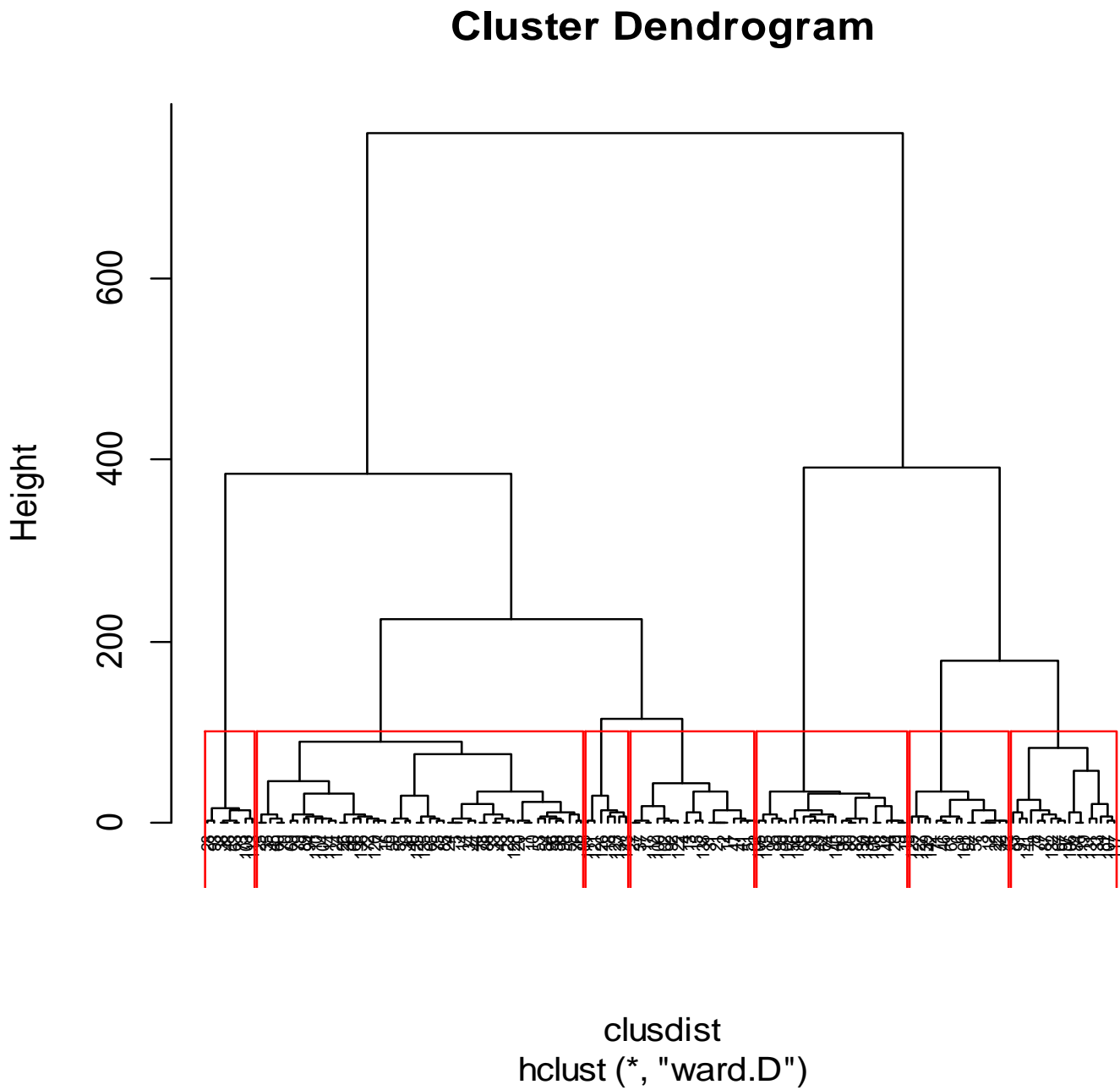
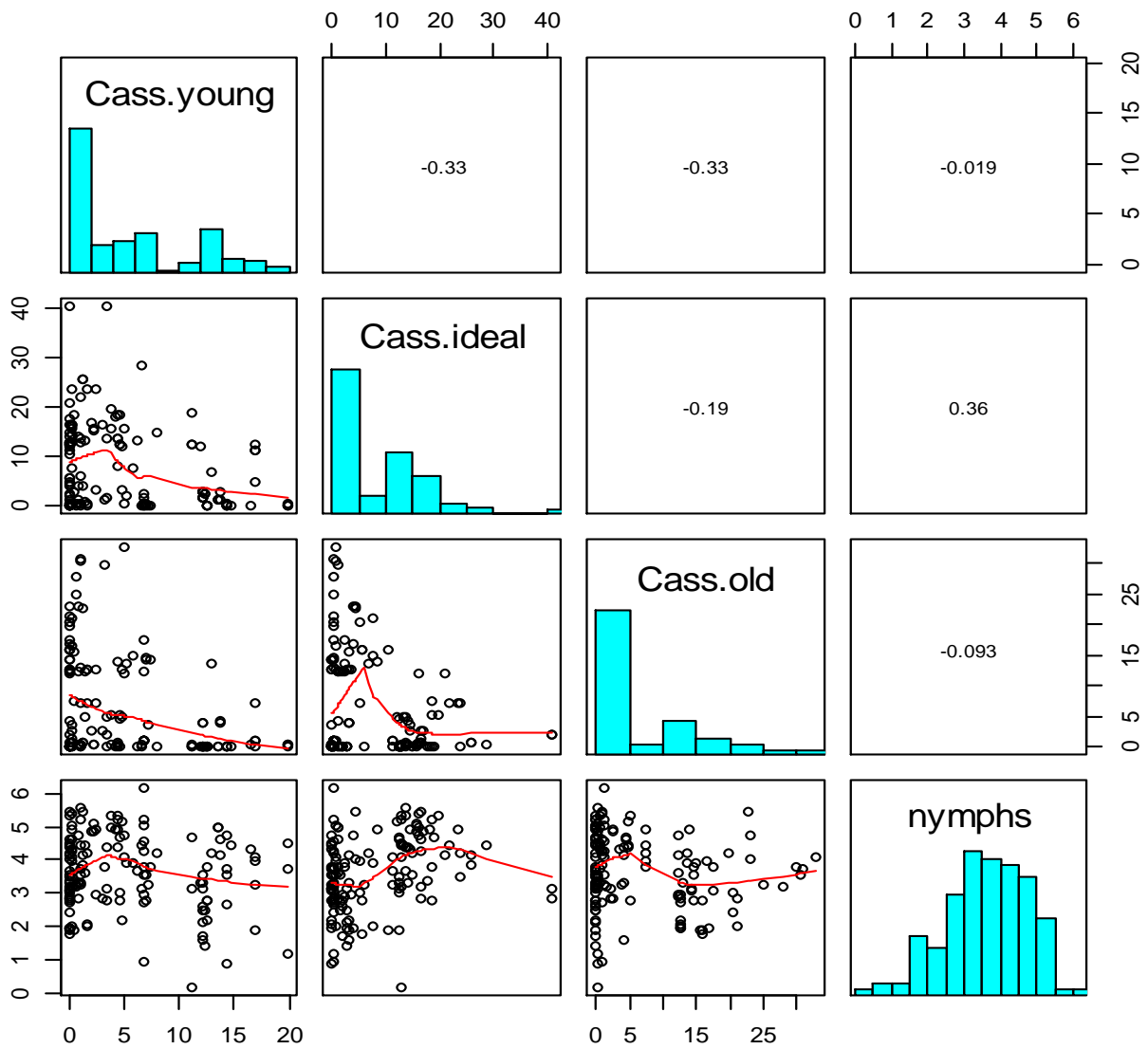


## Supplementary Information

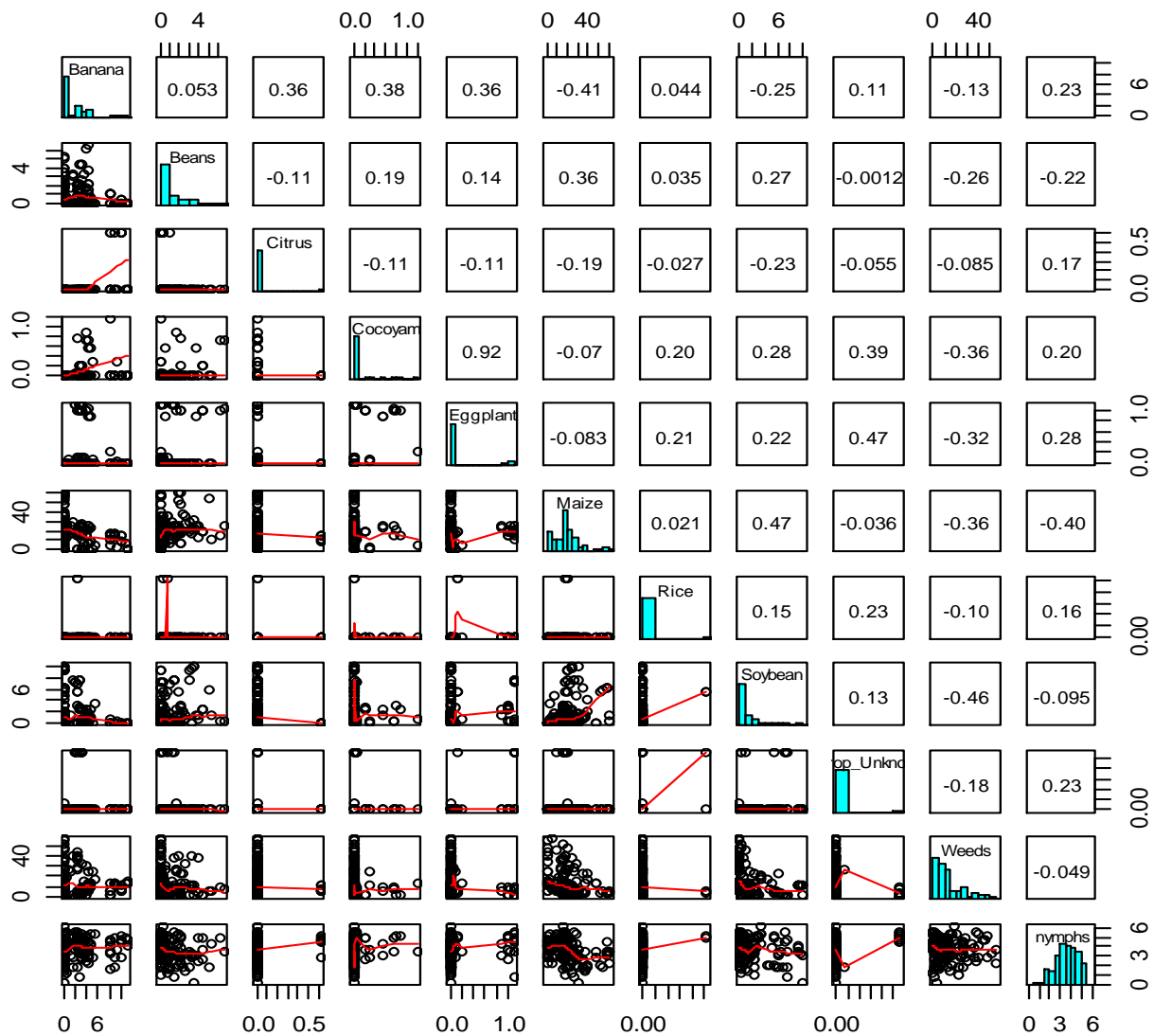
**Figure S1.** Dendrogram showing the seven clusters in the landscape



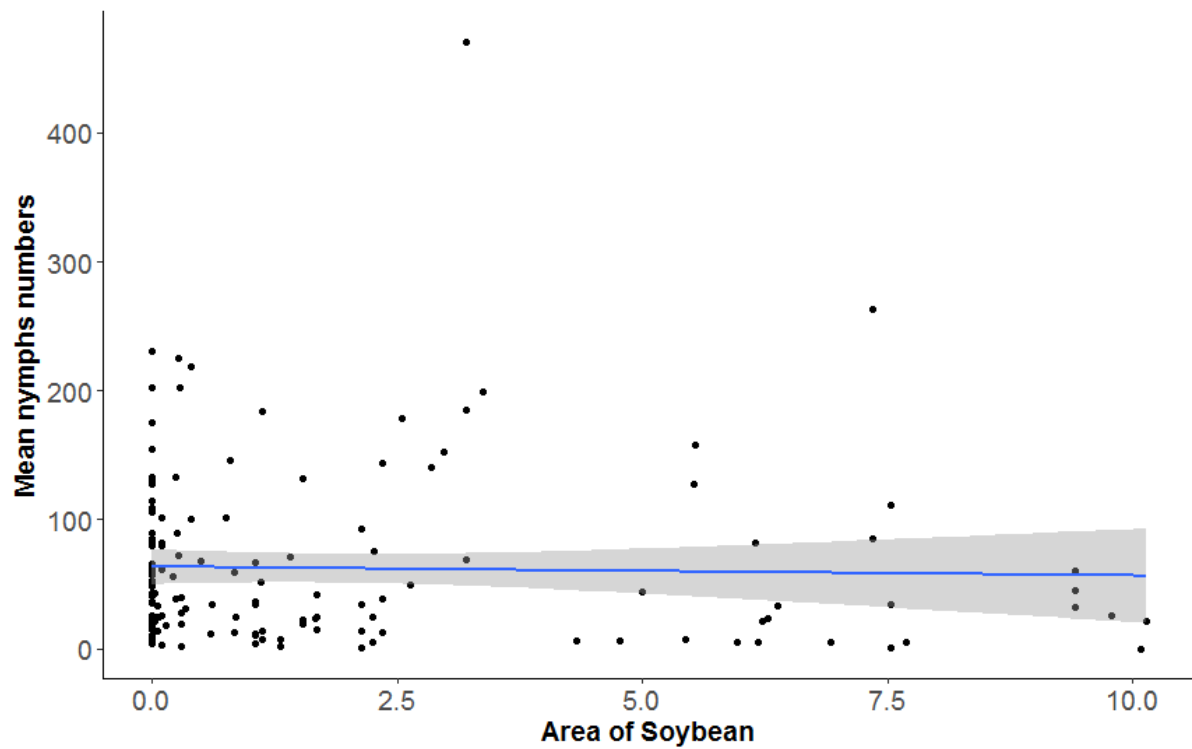
**Figure S2.** Correlation between SSA1 *Bemisia* nymphs and cassava age



**Figure S3.** Correlation of SSA1 *Bemisia* nymphs with area of different crops in the landscape



**Figure 4** Relationship between area of soybean and *Bemisia* nymph abundance in cassava.



**Figure S5.** Relationship between area of maize and *Bemisia* nymph abundance in cassava

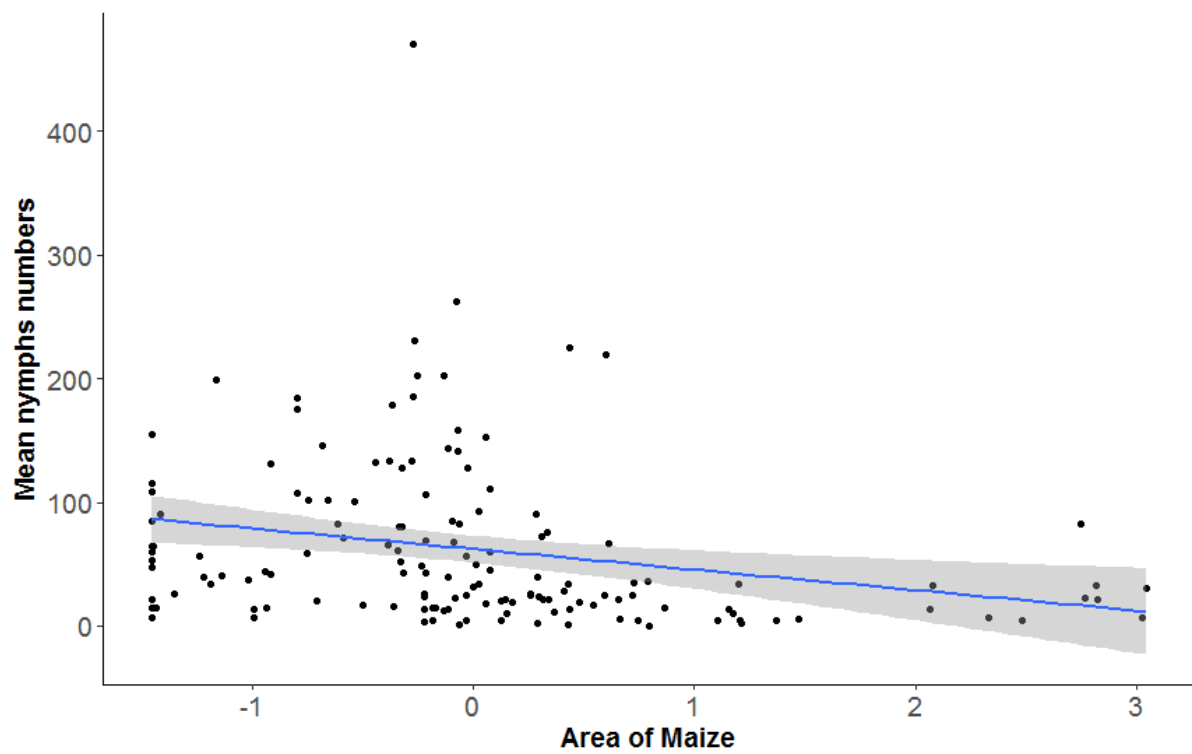


Figure S6. Relationship between area of beans and *Bemisia* nymph abundance in Cassava

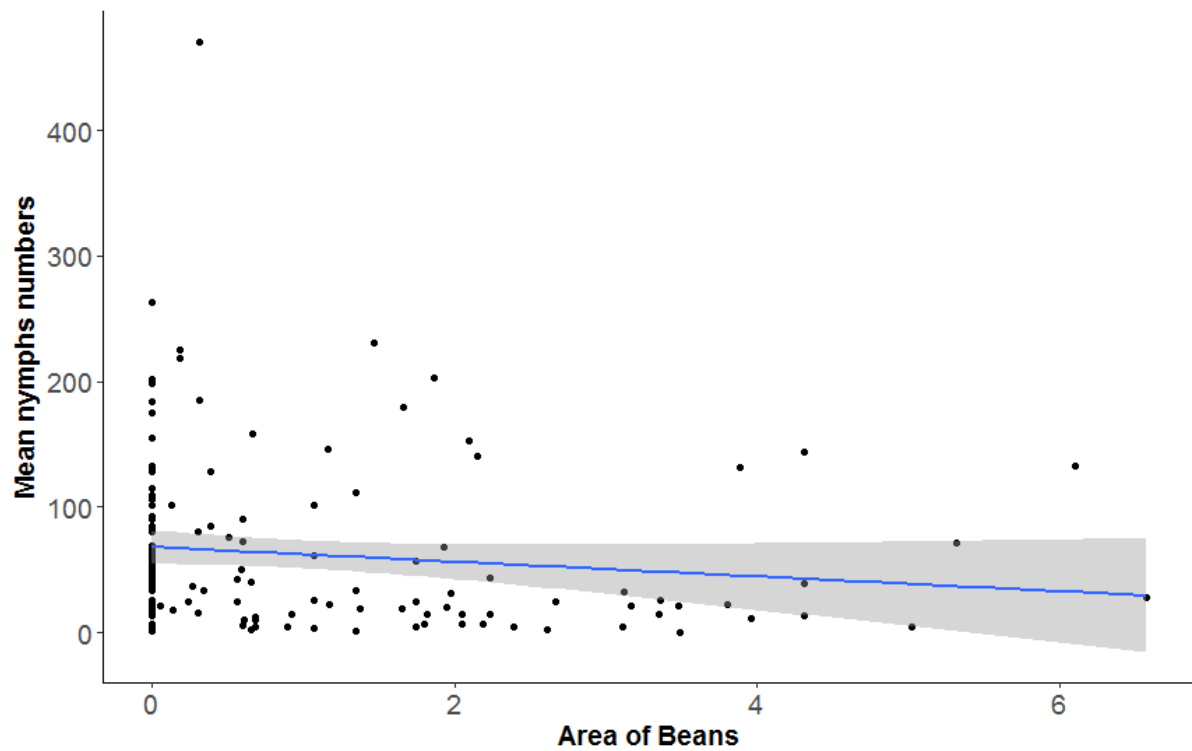


Figure S7. Relationship between area of eggplant and *Bemisia* nymph abundance in cassava

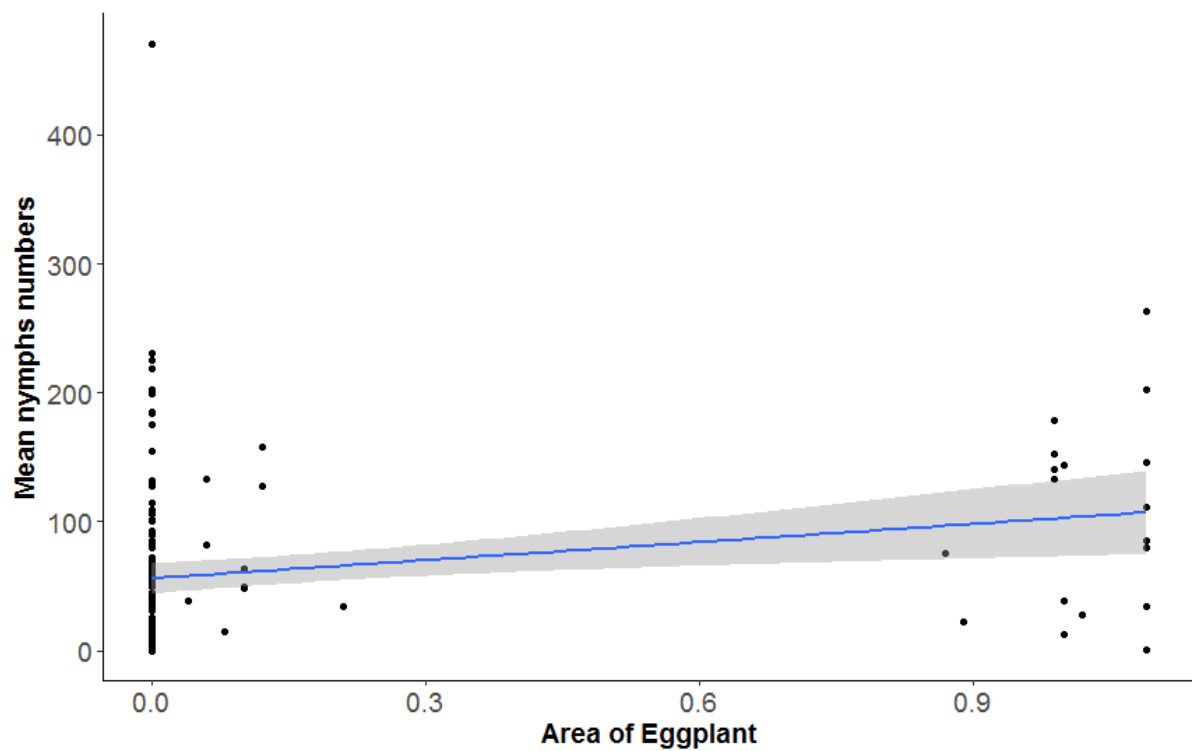


Figure S8. Relationship between area of cocoyam and *Bemisia* nymph abundance in cassava

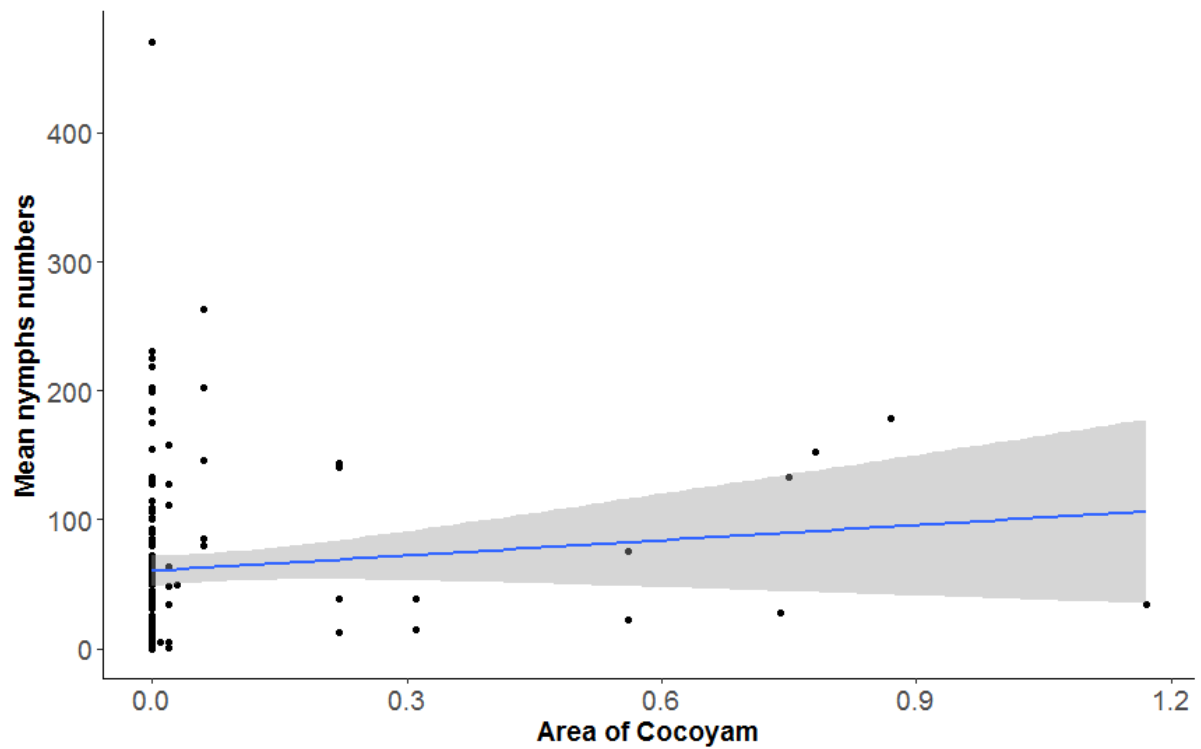
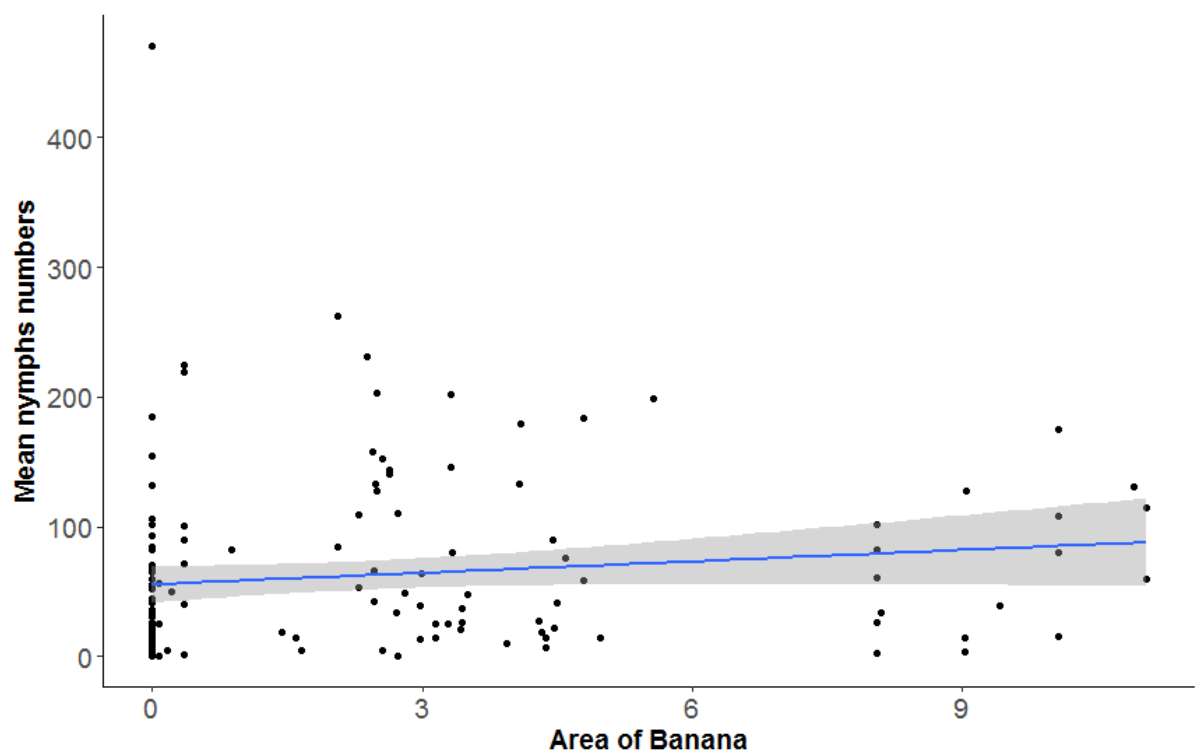
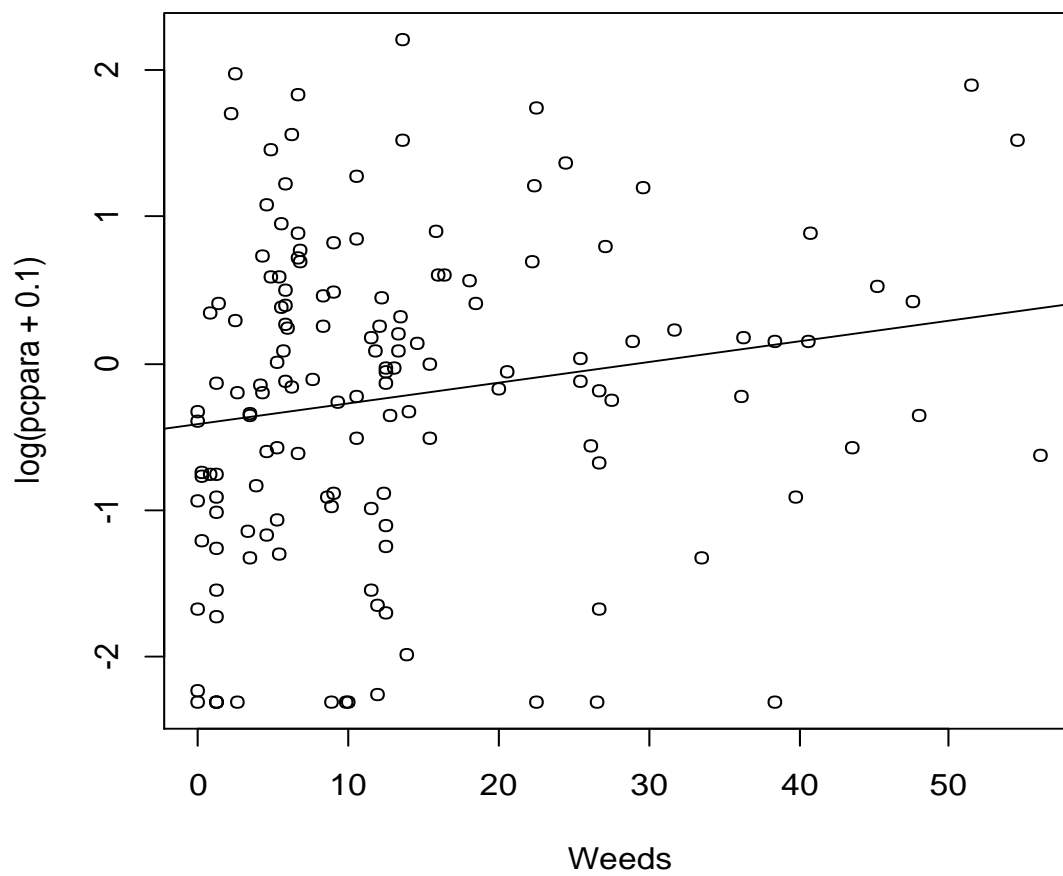


Figure S9. Relationship between area of banana and *Bemisia* nymph abundance in cassava



**Figure S10.** Scatterplot of percent parasitism and area of weeds in the landscape



**Figure S11.** Relationship between area of cassava and non-crop patches in the landscape

