

Figure S1A. Inconsistent *LyghePK* transcript amplification across multiple biological replicates. RT-PCR was performed using mixed sex adult body segment cDNAs prepared from four separate biological replicates (reps 1-4). Abbreviations - H, head; T, thorax; A, abdomen. NT denotes reactions lacking a cDNA template. Representative products from each segment were sub-cloned and sequenced.

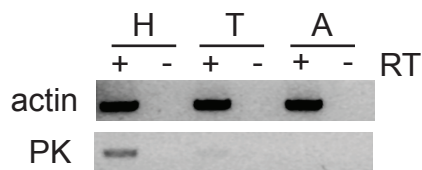


Figure S1B. *LyghePK* amplification is independent on reverse transcriptase (RT) positive templates. Total RNAs that were not reverse transcribed did not yield a product, indicating that DNase treatment of total RNAs prior to cDNA synthesis sufficiently removed any gDNA contamination. Abbreviations - H, head; T, thorax; A, abdomen.