

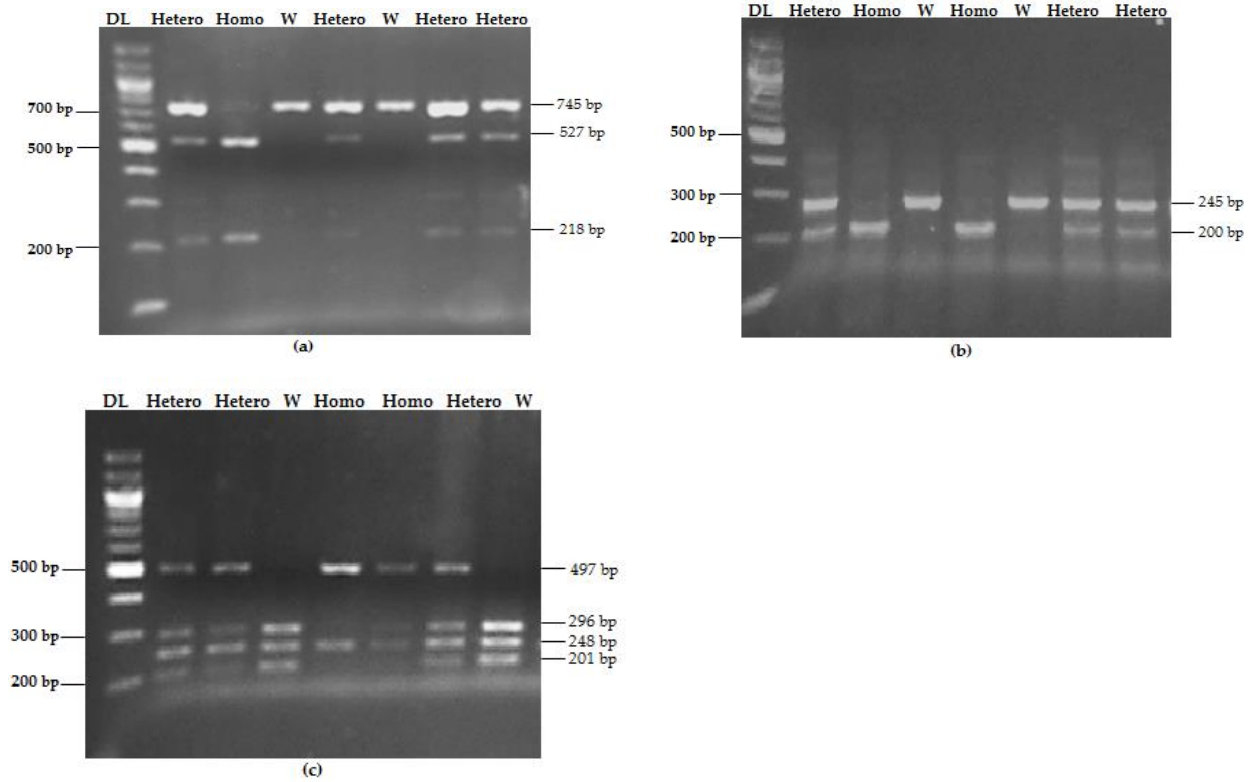
**Supplementary Table S1.** Distribution of Severity among Patients' Characteristics other than VDR genotyping

<b>Variable</b>	<b>Asymptomatic N (%)</b>	<b>Minor Illness N (%)</b>	<b>Moderate Illness N (%)</b>	<b>Sever Illness N (%)</b>	<b>P Value</b>
<b>Gender</b>					0.269
Male	21 (41.2)	12 (25.0)	0 (0.0)	0 (0.0)	
Female	30 (58.8)	36 (75.0)	1 (100.0)	1 (100.0)	
<b>Age (Years Old)</b>					<b>0.000</b>
Young Age (15 – 47)	42 (82.4)	32 (66.7)	0 (0.0)	1 (0.0)	
Middle Age (48 – 63)	9 (17.6)	14 (29.2)	0 (0.0)	0 (0.0)	
Old Age (64 and older)	0 (0.0)	2 (4.2)	1 (100.0)	0 (0.0)	
<b>BMI</b>					<b>0.000</b>
Normal Weight	29 (56.9)	26 (54.2)	0 (0.0)	0 (0.0)	
Underweight	2 (3.9)	5 (10.4)	0 (0.0)	0 (0.0)	
Overweight	19 (37.3)	16 (33.3)	1 (100.0)	0 (0.0)	
Obese	1 (2.0)	1 (2.1)	0 (0.0)	1 (100.0)	
<b>Smoking Level</b>					0.995
Non-Smoking	34 (66.7)	34 (70.8)	1 (100.0)	1 (100.0)	
Light Smoking	12 (23.5)	8 (16.7)	0 (0.0)	0 (0.0)	
Moderate Smoking	4 (7.8)	5 (10.4)	0 (0.0)	0 (0.0)	
Heavy Smoking	1 (2.0)	1 (2.1)	0 (0.0)	0 (0.0)	
<b>Diabetes Mellitus</b>					0.086
Yes	6 (11.8)	7 (14.6)	1 (100.0)	0 (0.0)	
No	45 (88.2)	41 (85.4)	0 (0.0)	1 (100.0)	
<b>Hypertension?</b>					0.051
Yes	5 (9.8)	6 (12.5)	1 (100.0)	0 (0.0)	
No	46 (90.2)	42 (87.5)	0 (0.0)	1 (100.0)	

<b>Cardiovascular Disease?</b>					<b>0.001</b>
Yes	2 (3.9)	3 (6.3)	1 (100.0)	0 (0.0)	
No	49 (96.1)	45 (93.8)	0 (0.0)	1 (100.0)	
<b>Comorbidities?</b>					0.098
Yes	7 (13.7)	12 (25.0)	1 (100.0)	0 (0.0)	
No	44 (86.3)	36 (75.0)	0 (0.0)	1 (100.0)	

\* P. values obtained from Chi-Square Test

\* Bold *P* values are statistically significant (<0.05).



**Supplementary Figure S1.** Gel electrophoresis of RFLP products of *Apal*, *FokI*, and *TaqI* polymorphisms. (a) Genotyping results for VDR *Apal*; (b) Genotyping results for VDR *FokI*; (c) Genotyping results for VDR *TaqI*. Hetero, Heterozygous; Homo, Homozygous; W, Wild-type; DL, DNA loading ladder.