

SUPPLEMENTARY APPENDIX

EXTRAFINE BECLOMETASONE DIPROPIONATE/ FORMOTEROL NEXTHALER ON USABILITY OF DEVICE, ADHERENCE, ASTHMA CONTROL AND QUALITY OF LIFE. A PANHELLENIC PROSPECTIVE, NON-INTERVENTIONAL OBSERVATIONAL STUDY IN PATIENTS WITH ASTHMA - THE NEXT-STEP STUDY

Petros Bakakos¹, Panagiotis Chatziapostolou², Panos Katerelos³, Petros Efstathopoulos⁴, Aliko Korkontzelou⁵ and Paraskevi Katsaounou⁶

¹ 1st University Department of Respiratory Medicine, National and Kapodistrian University of Athens, Medical School, "Sotiria" Chest Diseases Hospital, 11527 Athens, Greece; petros44@hotmail.com

² Pulmonary Clinic, Euromedica General Clinic of Thessaloniki, 54645 Thessaloniki, Greece; panoshatzia-postolou@gmail.com

³ BioStatistics PC; p.katerelos@bio-statistics.eu

⁴ Chiesi Hellas S.A.; p.efstathopoulos@chiesi.com

⁵ Chiesi Hellas S.A.; a.korkontzelou@chiesi.com

⁶ Pulmonary and Respiratory Failure Dpt, First ICU, Evangelismos Hospital, Ipsilandou 45-7, 10676 Athens, Greece; paraskevikaounou@gmail.com

* Correspondence: Korkontzelou Aliko; a.korkontzelou@chiesi.com

3.1. FSI-10

Adjusted R ² = 0.212	Unstandardized Coefficients		Standardized Coefficients	t-statistic	p-value
	B Coefficient	S.E.	Beta Coefficient		
Constant	50.050	0.435		115.150	<0.001
Average MORISKY scale	-1.467	0.127	-0.403	-11.570	<0.001
Age (years)	-0.041	0.008	-0.184	-5.209	<0.001

Table 1 SA. Multiple Linear Regression analysis. Dependent variable: FSI-10 total score, average values of the two Visits.

3.2 Morisky scale

Adjusted R ² = 0.181	Unstandardized Coefficients		Standardized Coefficients	t-statistic	p-value
	B Coefficient	S.E.	Beta Coefficient		
Constant	6.611	0.505		13.085	<0.001
FSI-10 total score	-0.114	0.010	-0.414	-11.451	<0.001
Age (years)	-0.007	0.002	-0.121	-3.348	0.001
ACQ-6 Total score	-0.097	0.032	-0.106	-2.988	0.003

Table 2 SA. Multiple Linear Regression analysis. Dependent variable: Morisky scale, average values of the two Visits

3.3 Asthma control (ACQ-6)

Adjusted R ² = 0.737	Unstandardized Coefficients		Standardized Coefficients	t-statistic	p-value
	B Coefficient	S.E.	Beta Coefficient		
Constant	-2.080	0.293		-7.094	<0.001
Baseline ACQ total score	0.828	0.020	0.832	41.138	<0.001
FSI-10 average total score	0.041	0.006	0.135	6.629	<0.001

Table 3 SA. Multiple Linear Regression analysis. Dependent variable: ACQ-6

3.4 Quality of Life (AQLQ)

Adjusted R ² = 0.723	Unstandardized Coefficients		Standardized Coefficients	t-statistic	p-value
	B Coefficient	S.E.	Beta Coefficient		
Constant	2.818	0.322		8.743	<0.001
Baseline AQLQ total score	-0.802	0.020	-0.820	-39.512	<0.001
FSI-10 average total score	0.054	0.007	0.174	8.304	<0.001

Table 4 SA. Multiple Linear Regression analysis. Dependent variable: AQLQ

3.5 Lung function

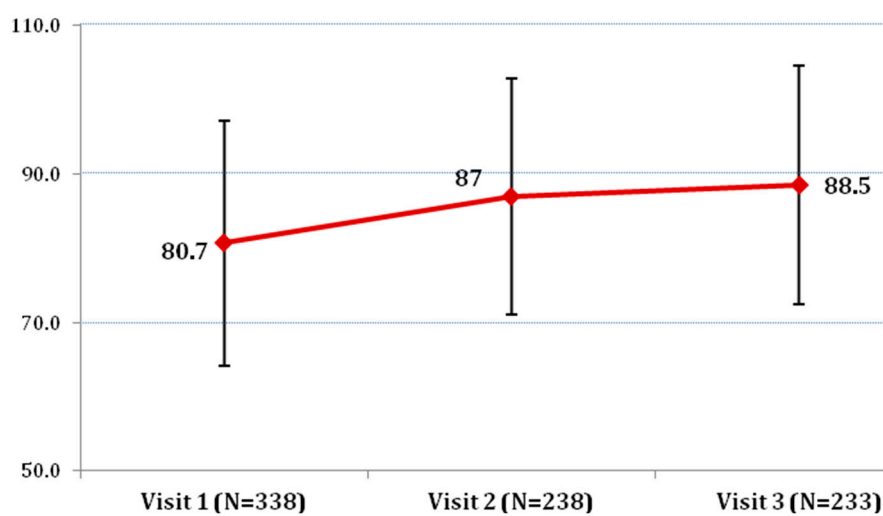


Figure 1 SA. FEV1% predicted /Mean \pm SD on the 3 Visits of the study. Base: Observed cases.

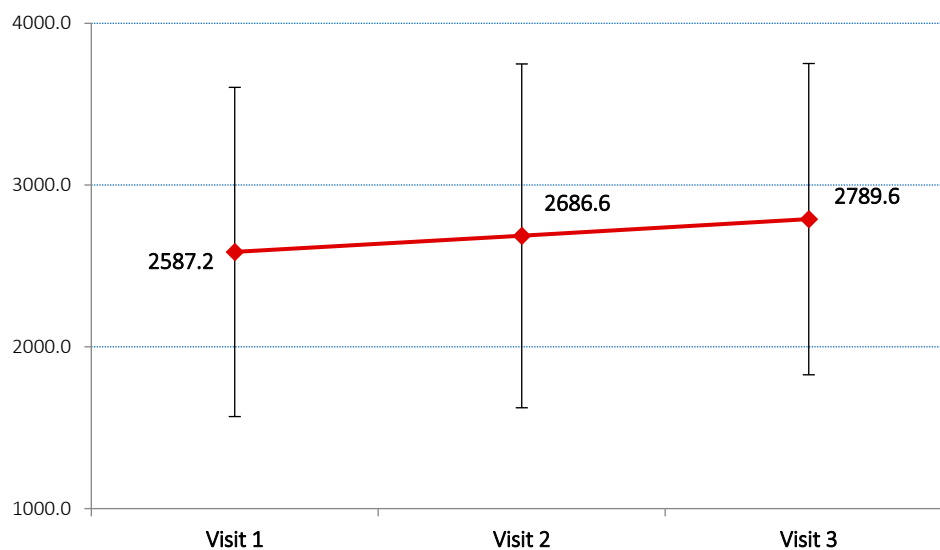


Figure 2 SA: FEV1 (mL) Mean \pm SD on the 3 Visits of the study. Base: Observed cases.

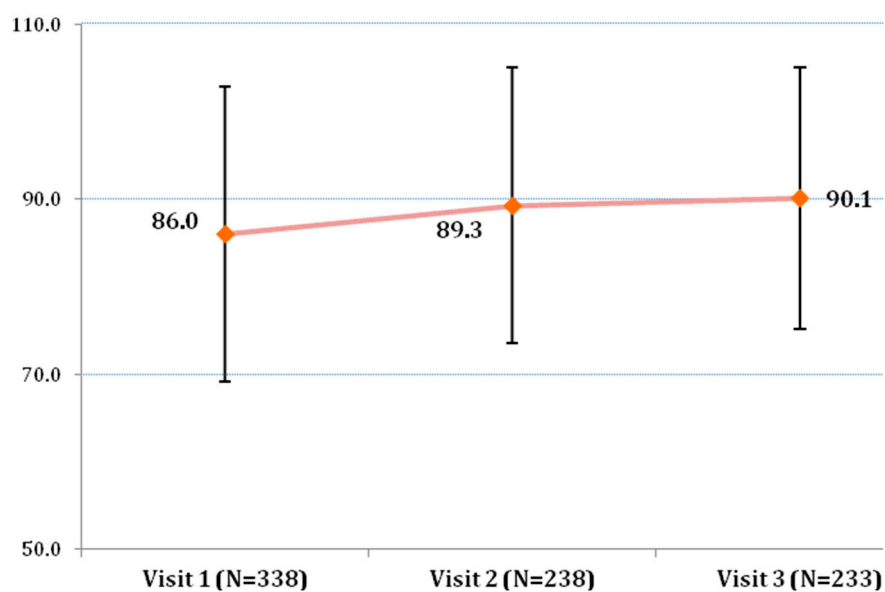


Figure 3 SA. FVC% predicted /Mean \pm SD on the 3 Visits of the study. Base: Observed cases.