

Figure S1. Collagenase digestion of partial porcine liver. (A) Under collagenase perfusion through catheter into a portal vein branch. (B) 30 min after perfusion. The cell viability of hepatocytes was 91%.

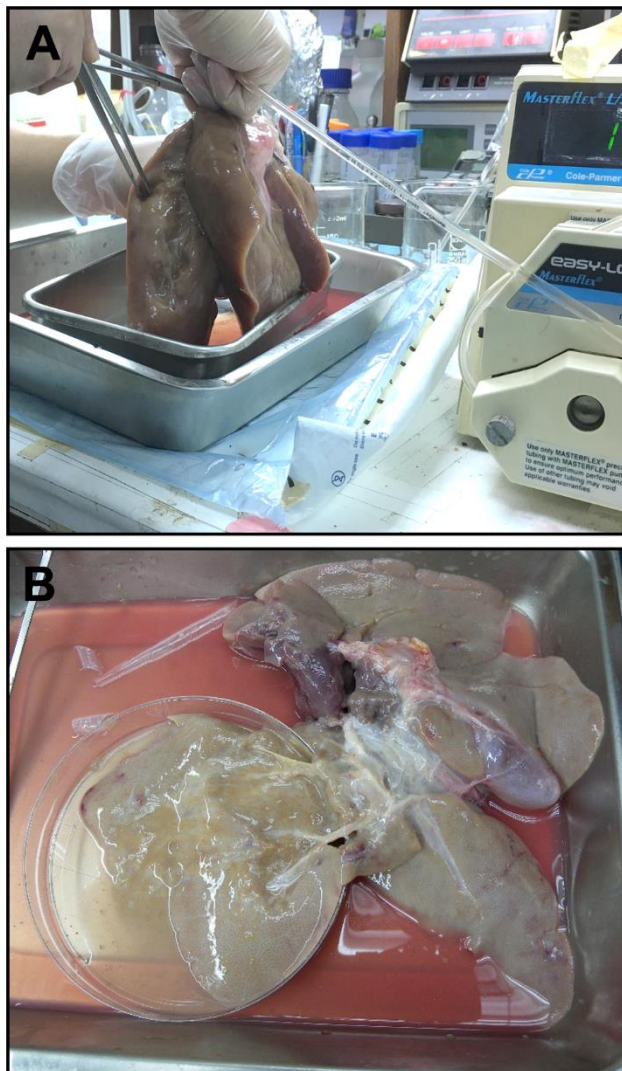


Figure S2. Cholangiocytes (marked by CK-19) and sinusoidal endothelial cells (marked by SE-1) in cellular products immediately after isolation of rat livers. Scale bar: 100 μ m.

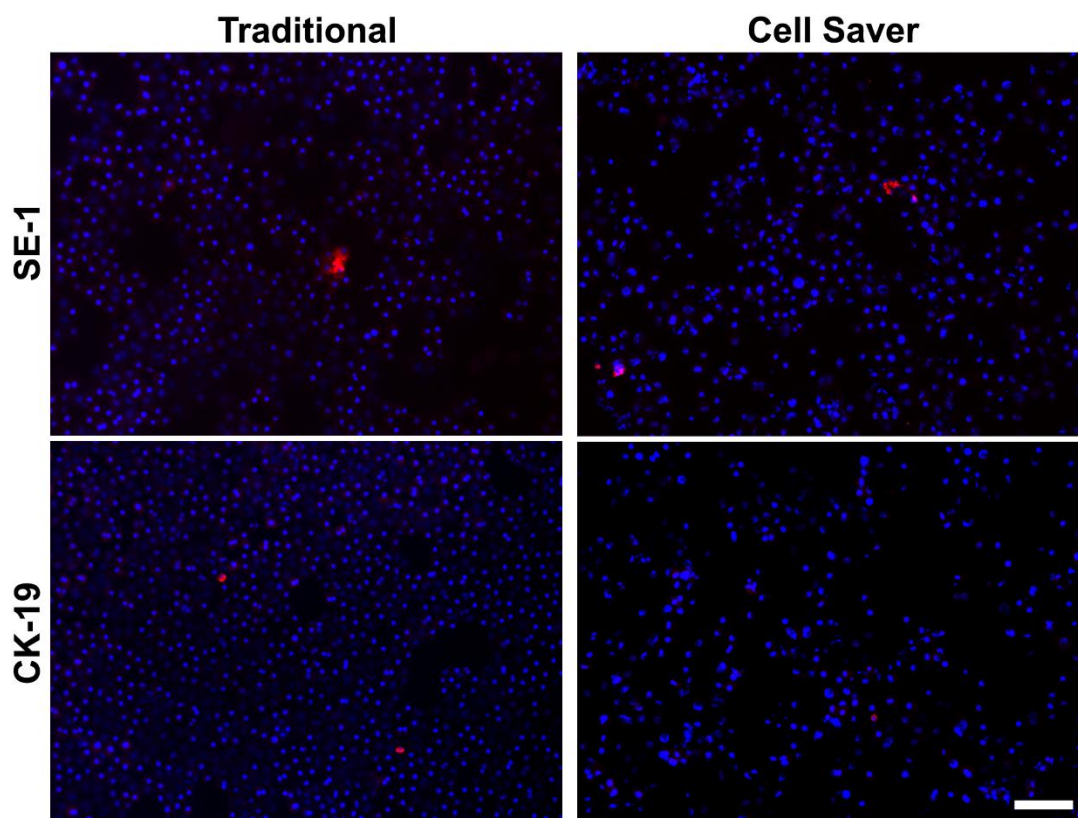


Figure S3. Isolated porcine hepatocytes obtained using the traditional method were confirmed based on albumin and cytochrome P450 3A4 (CYP3A4) expression. Scale bar: 100 μ m.

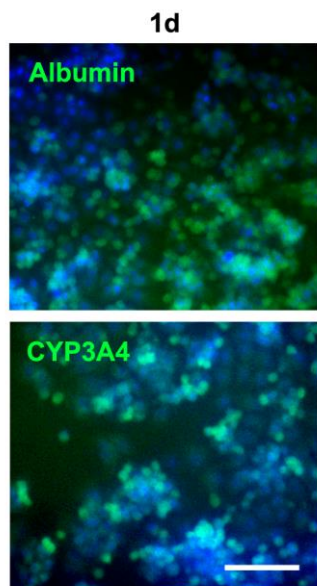


Figure S4. Experimental design for hepatocyte transplantation.

