

Article

The Assisi Think Tank Meeting Breast Large Database for Standardized Data Collection in Breast Cancer—ATTM.BLADE

Fabio Marazzi ¹, Valeria Masiello ^{1,*}, Carlotta Masciocchi ², Mara Merluzzi ³, Simonetta Saldi ⁴, Paolo Belli ⁵, Luca Boldrini ^{1,6}, Nikola Dino Capocchiano ⁶, Alba Di Leone ⁷, Stefano Magno ⁷, Elisa Meldolesi ¹, Francesca Moschella ⁷, Antonino Mulé ⁸, Daniela Smaniotto ^{1,6}, Daniela Andreina Terribile ⁸, Luca Tagliaferri ¹, Gianluca Franceschini ^{6,7}, Maria Antonietta Gambacorta ^{1,6}, Riccardo Masetti ^{6,7}, Vincenzo Valentini ^{1,6}, Philip M. P. Poortmans ^{9,10} and Cynthia Aristei ¹¹

Citation: Marazzi, F.; Masiello, V.; Masciocchi, C.; Merluzzi, M.; Saldi, S.; Belli, P.; Boldrini, L.; Capocchiano, N.D.; Leone, A.D.; Magno, S.; et al. The Assisi Think Tank Meeting Breast Large DatabasE for Standardized Data Collection in Breast Cancer—ATTM.BLADE. *J. Pers. Med.* **2021**, *11*, 143. <https://doi.org/10.3390/jpm11020143>

Academic Editor: Enrico Capobianco

Received: 30 December 2020

Accepted: 8 February 2021

Published: 19 February 2021

Publisher's Note: MDPI stays neutral with regard to jurisdictional claims in published maps and institutional affiliations.



Copyright: © 2021 by the authors. Licensee MDPI, Basel, Switzerland. This article is an open access article distributed under the terms and conditions of the Creative Commons Attribution (CC BY) license (<http://creativecommons.org/licenses/by/4.0/>).

- ¹ UOC di Radioterapia Oncologica, Dipartimento di Diagnostica per Immagini, Radioterapia Oncologica ed Ematologia, Fondazione Policlinico Universitario “A. Gemelli” IRCCS, 00168 Roma, Italy; fabio.marazzi@policlinicogemelli.it (F.M.); luca.boldrini@policlinicogemelli.it (L.B.); elisa.meldolesi@guest.policlinicogemelli.it (E.M.); daniela.smaniotto.rt@gmail.com (D.S.); luca.tagliaferri@policlinicogemelli.it (L.T.); mariaantonietta.gambacorta@policlinicogemelli.it (M.A.G.); vincenzo.valentini@policlinicogemelli.it (V.V.)
- ² Fondazione Policlinico Universitario “A. Gemelli” IRCCS, 00168 Roma, Italy; carlotta.masciocchi@guest.policlinicogemelli.it
- ³ Radiation Oncology Section, Department of Medicine and Surgery, University of Perugia, 06123 Perugia, Italy; maramerluzzi@libero.it
- ⁴ Radiation Oncology Section, Perugia General Hospital, 06123 Perugia, Italy; saldisimonetta@gmail.com
- ⁵ UOC di Diagnostica per Immagini, Dipartimento di Diagnostica per Immagini, Radioterapia Oncologica ed Ematologia, Fondazione Policlinico Universitario “A. Gemelli” IRCCS, 00168 Roma, Italy; paolo.belli@policlinicogemelli.it
- ⁶ Istituto di Radiologia, Università Cattolica del Sacro Cuore, 00168 Roma, Italy; nikoladino.capocchiano@unicatt.it (N.D.C.); gianluca.franceschini@policlinicogemelli.it (G.F.); riccardo.masetti@policlinicogemelli.it (R.M.)
- ⁷ UOC di Chirurgia Senologica, Dipartimento di Scienze della Salute della Donna e del Bambino e di Sanità Pubblica, Fondazione Policlinico Universitario “A. Gemelli” IRCCS, 00168 Roma, Italy; alba.dileone@policlinicogemelli.it (A.D.L.); stefano.magno@policlinicogemelli.it (S.M.); francesca.moschella@policlinicogemelli.it (F.M.)
- ⁸ UOC di Anatomia Patologica, Dipartimento di Scienze della Salute della Donna e del Bambino e di Sanità Pubblica, Fondazione Policlinico Universitario “A. Gemelli” IRCCS, 00168 Roma, Italy; antonino.mule@policlinicogemelli.it (A.M.); danielaandreina.terribile@policlinicogemelli.it (D.A.T.)
- ⁹ Department of Radiation Oncology, Iridium Kankernetwerk, 2170 Wilrijk-Antwerp, Belgium; philip.poortmans@telenet.be
- ¹⁰ Faculty of Medicine and Health Sciences, University of Antwerp, 2170 Wilrijk-Antwerp, Belgium
- ¹¹ Radiation Oncology Section, University of Perugia and Perugia General Hospital, 06123 Perugia, Italy; cynthia.aristei@unipg.it
- * Correspondence: valeria.masiello@guest.policlinicogemelli.it

Abstract: Background: During the 2016 Assisi Think Tank Meeting (ATTM) on breast cancer, the panel of experts proposed developing a validated system, based on rapid learning health care (RLHC) principles, to standardize inter-center data collection and promote personalized treatments for breast cancer. **Material and Methods:** The seven-step *Breast Large DatabasE (BLADE)* project included data collection, analysis, application, and evaluation on a data-sharing platform. The multidisciplinary team developed a consensus-based ontology of validated variables with over 80% agreement. This English-language ontology constituted a breast cancer library with seven knowledge domains: baseline, primary systemic therapy, surgery, adjuvant systemic therapies, radiation therapy, follow-up, and toxicity. The library was uploaded to the *BLADE* domain. The safety of data encryption and preservation was tested according to General Data Protection Regulation

(GDPR) guidelines on data from 15 clinical charts. The system was validated on 64 patients who had undergone post-mastectomy radiation therapy. In October 2018, the *BLADE* system was approved by the Ethical Committee of Fondazione Policlinico Gemelli IRCCS, Rome, Italy (Protocol No. 0043996/18). **Results:** From June 2016 to July 2019, the multidisciplinary team completed the work plan. An ontology of 218 validated variables was uploaded to the *BLADE* domain. The GDPR safety test confirmed encryption and data preservation (on 5000 random cases). All validation benchmarks were met. **Conclusion:** *BLADE* is a support system for follow-up and assessment of breast cancer care. To successfully develop and validate it as the first standardized data collection system, multidisciplinary collaboration was crucial in selecting its ontology and knowledge domains. *BLADE* is suitable for multi-center uploading of retrospective and prospective clinical data, as it ensures anonymity and data privacy.

Keywords: breast cancer; large database; standardized data collection; networks

1. Introduction

Breast cancer, one of the main causes of women's mortality, is characterized by highly complex presentation patterns [1]. Even though population-based screening programs [1], new therapies [2], advanced technologies [3], and multidisciplinary approaches [4] have improved survival and quality of life [4] in the previous decades, cure remains a challenge in some sub-groups of patients. Consequently, hypothesis-based tailored treatments that are adapted to each individual patient's specific features are being explored in an approach termed personalized medicine. Due to complex information systems, personalized medicine overcomes uncertainties about particular conditions in small sub-groups of patients, which increase the complexity of decision-making [5,6]. Despite growing interest, a literature review revealed no consensus on how to define and apply personalized medicine [5]. Semantic approaches include patient stratification and treatment tailoring. In the former, individual patients are grouped into subpopulations according to the probability that a specific drug or treatment regimen will be of benefit, whereas in the latter, the individual patient's status is used as the rationale for treatment choice [6,7].

The application of personalized medicine may be limited in clinical practice by the results of randomized controlled trials (RCTs). Patient selection, as defined by inclusion and exclusion criteria, leads to adaptive randomization, so outcomes refer only to the RCT-eligible population [8]. Furthermore, since the selected patients are usually in good clinical condition, with few or no comorbidities, the results cannot be extrapolated to all cases that physicians may encounter in clinical practice [9]. Additionally, due to long recruitment and follow-up times, RCT evidence may be out-of-date when it is made available, and progress may have already been made in developing treatments beyond old standards. Lambin et al. [10,11] reported that high quantity, low quality data from clinical charts reflected reality better than RCT data, and therefore provided valuable information for applying personalized medicine in clinical practice [9,12]. However, new instruments are needed to include the data and address uncertainties in clinical decision-making.

Rapid learning health care fills this gap, since it extracts and applies knowledge from routine clinical care data rather than RCT evidence alone. Since data management of cross-linked information from diverse sources is complex, data analysis should be managed by machine learning to create decision support systems, i.e., software applications that apply knowledge-driven healthcare to clinical practice. Another rapid learning principle is that these systems need constant updating.

In February 2016, a group of expert radiation oncologists organised the Assisi Think Tank Meeting (ATTM) to discuss research, controversies, and grey areas in breast cancer [13], and proposed a validated system based on rapid learning health care for standard-

ized data collection to generate evidence for personalized medicine. In one of the participating centers, the Fondazione Policlinico Gemelli IRCCS, an umbrella protocol [14,15] was already approved by the Ethical Committee. The Beyond Ontology Awareness (BOA) platform (Figure 1) had been developed and implemented in close collaboration with physicians and informatics technology researchers [8,13]. It safely stores, analyzes, and shares data on diverse cancer types in a standardized manner [9,16] as well as reproducing the ontology structure and managing data legacy and privacy. BOA software converts the center's legacy archives in accordance with a global data dictionary and anonymously replicates clinical data in a large cloud-based database.

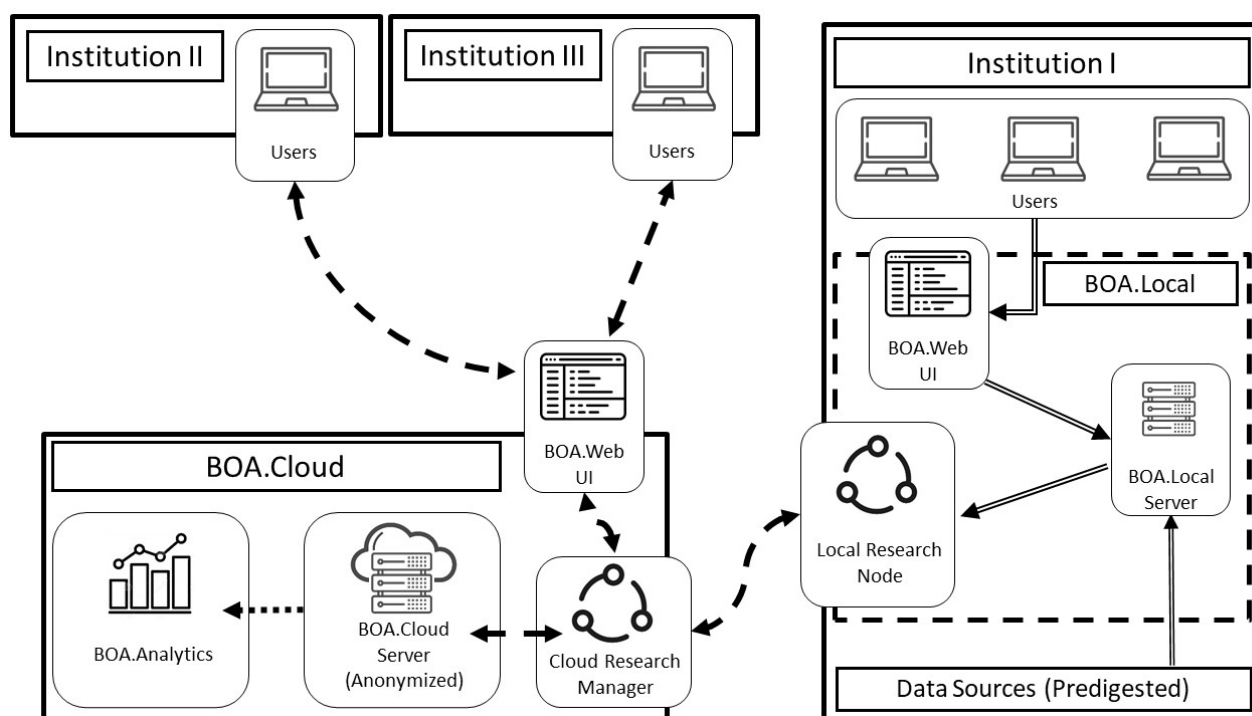


Figure 1. General beyond awareness ontology (BOA) architecture, with both the BOA.Local and BOA.Cloud servers. An infinite number of external institutions without a BOA.Local installation can be added at needed to this infrastructure. Double-line arrows represent non-anonymized patient data, dashed arrows represent anonymized patient data, and dotted arrows represent aggregate data.

In the present project, the BOA platform was expanded for specific use in breast cancer care. A multi-disciplinary panel of experts from the Fondazione Policlinico Gemelli IRCCS, Perugia University, and General Hospital designed a standardized data collection system and developed the *Breast Large DataBase (BLADE)*. Its primary objective was to offer radiation oncology centers worldwide treating breast cancer the opportunity to collect and share data in a standardized large database, and thus develop descriptive, predictive, and prognostic models for supportive care, survival, and toxicity. Its long-term aim is to build decision support systems to personalize treatments, use resources in terms of cost-effectiveness, and make therapies more effective and less toxic.

2. Materials and Methods

After a review of breast cancer literature and current guidelines, a multi-step process was set up for data collection, analysis, application, and evaluation. Benchmarks were the rapid learning criteria by Lambin et al. [11]. The project was organized in a 7-step working plan as defined in a GANNT chart, and the time-frame for each step was established [17] (Figure 2). Data collection was structured to capture volume, variety, velocity, and veracity [11] and aimed to achieve a standardized ontology and overcome privacy issues. Approval was acquired from the Ethical Committee.

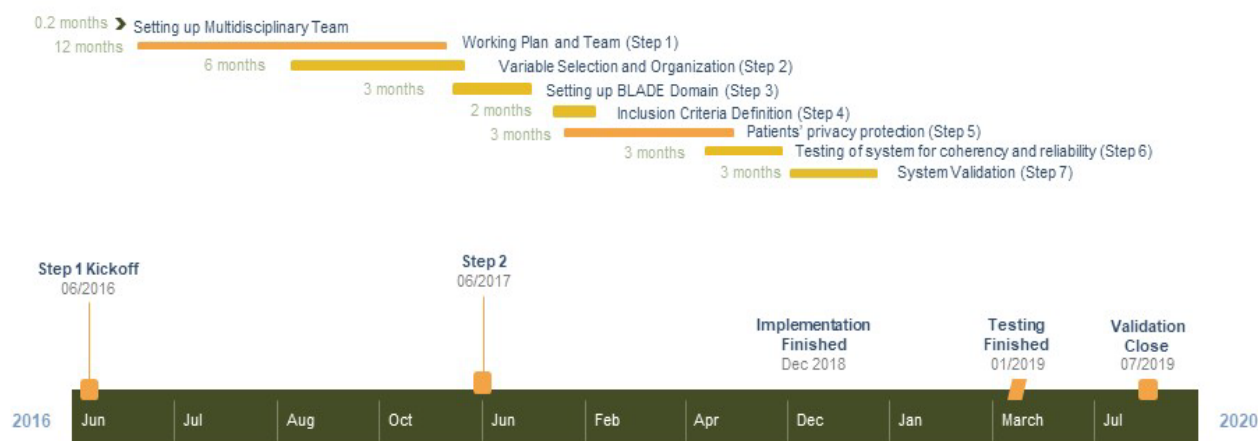


Figure 2. Timeline framework for ATTM.BLADE project.

2.1. Data Collection Methodology

Working Plan and Team (Step 1). Members of the working group from the Fondazione Policlinico Gemelli and Perugia University, and General Hospital included 6 radiation oncologists; 1 medical oncologist; 1 pathologist; 3 breast surgeons; 1 radiologist; 2 informatics experts; 1 data manager. The working group established a timeframe of 12 months for developing the *BLADE* system. Responsibilities and times to complete each step were defined. Progress was updated every 3 months via live meetings or conference calls.

Variable Selection and Organization (Step 2). Each team member reviewed the literature, focusing on RCTs and international guidelines, e.g., NCCN, ASTRO, ESTRO, and AIRO for radiation oncology [18–20] and established 7 domains of knowledge: baseline, primary systemic therapy, surgery, adjuvant systemic therapies, radiation therapy, follow-up, and toxicity. Major variables were chosen for each domain to create a shared-language ontology (terminology system). Variables were related to patients (e.g., age, sex, and gene profiling), clinical presentations (e.g., disease stage, markers, and pathology findings), treatments (e.g., surgery, systemic therapies, radiation therapy, and palliative care), and imaging (at diagnosis, treatment, and follow-up).

Variables were validated by a consensus panel that indicated the response type for each variable (yes/no, single, or multi-options), selected and voted on multi-options. Consensus was reached with 80% agreement.

Setting up the BLADE domain (Step 3). BOA was configured to include *BLADE* and process breast cancer data. It is equipped with local and cloud servers (Figure 1) depending on the desired configuration package. Users can access the BOA services through an intranet or internet connection and need only a standard web browser to connect, with no additional software. In the BOA.Local configuration, which only allows access through the local intranet, each institution has complete control over its data repository, and collected records are saved without any automated pseudo-anonymization procedures. The internet-facing server installation on the BOA.Cloud has the same features as the BOA.Local service, but it automatically and mandatorily pseudo-anonymizes all data. Before storage, each patient is assigned an ad hoc universally unique identifier (UUID), and all personal data or connections to existing records are severed. BOA.Cloud and BOA.Local store and process data in accordance with General Data Protection Regulation (GDPR). BOA.Local data can be dynamically cloned, automatically anonymized, and consolidated onto the BOA.Cloud server through a research manager—research node connection algorithm, and the data are then ready to be processed or analysed as needed. Figure 3 illustrates the underlying data model used in the databases of both BOA services.

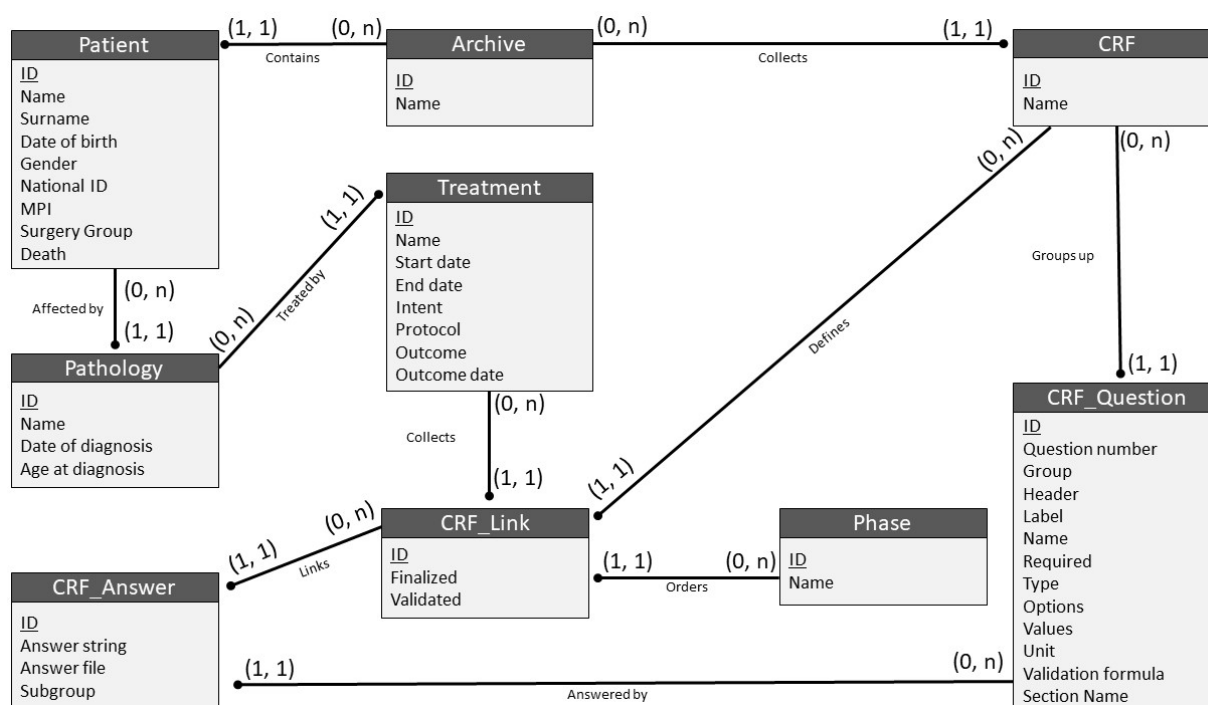


Figure 3. Underlying BOA data model visualized through an entity–relationship model that highlights all relationships between the different objects in the database. As an example (and using imaginary values), the archive named *BLADE* would contain a patient named John Doe, affected by a pathology of breast cancer, for which he was treated through a treatment of first treatment. This treatment would have a compiled version of the case report form (CRF) radiotherapy linked to the phase called neoadjuvant, and an answer of prone, to the question of radiotherapy treatment position present in the previously mentioned CRF.

To create the *BLADE* domain, Excel spreadsheet files with all ontology-related variables were uploaded on to the BOA platform. *BLADE*'s 7 specific case report forms (CRFs), which were devised according to OpenClinica system criteria [21], are compatible with the BOA ontology framework. CRFs are available in Supplementary Materials file 1, with explanations of CRF definitions in Supplementary Materials file 2.

Inclusion Criteria (Step 4). The working group defined patient selection criteria, agreeing that retrospective and prospective data from all selected breast cancer patients can be included in *BLADE*.

Retrospective data: When *BLADE* is installed on the BOA platform, patient data will be derived from existing retrospective electronic or paper databases in each participating center. The data will be anonymized and shared only for research purposes.

Prospective data: Patients whose data are eligible for enrolment in prospective *BLADE* studies will be informed about the opportunity to share their data for research purposes at their first medical examination, and invited to participate. The patients' written informed consent will be obtained and archived.

Patients' privacy protection (Step 5). Privacy needs to be guaranteed according to GDPR guidelines [22] for data protection. *BLADE* and BOA manage data using an AES-256 encryption system and an automatic data pseudo-anonymization algorithm. Each case is associated with a UUID code number with no reference to the individual's identity, and is only accessible to specifically authorized health operators through their personal access codes and accounts. All changes in *BLADE* are automatically tracked and logged, including past and present values for form fields and the account identifiers of operators that modified existing data or inserted new data into CRFs.

2.2. Testing the BLADE Domain for Coherency and Reliability (Step 6)

A data entry expert in the CRF system inserted data from 15 clinical charts of breast cancer patients that were randomly selected from Policlinico Gemelli records. According to GDPR principles, informatics verified accuracy, data conservation, limitations, and integrity during uploading. Criteria for coherency and reliability tests of the *BLADE* domain were the following (Article. 32 of GDPR):

- Data pseudo-anonymization and encryption;
- Permanent assurance of confidentiality, integrity, availability, and resiliency of treatment systems and services;
- Prompt restoration of availability and access to personal data in case of physical or technical accident;
- Regular tests, verifications, and assessments of technical and organizational effectiveness measures to ensure data safety.

2.3. System Validation (Step 7)

BLADE was validated after checking adhesion to the GDPR criteria, and uploading and extracting data for statistical analysis from the clinical records of 64 patients who had undergone post-mastectomy radiation therapy (RT). All patients gave permission for their data from local databases to be transferred to *BLADE*.

Physicians asked the informatics expert to extract the following data from *BLADE*:

- Clinical-, treatment-, and tumor-related data: age, date of diagnosis, primary systemic treatments, histological sub-type, receptor status, multi-focality, and clinical and pathological stages;
- Reconstruction data: type of reconstructive surgery, prosthesis material, time to prosthesis-related complication (TPC), time to prosthesis reoperation (TPR), and ratio of TPC/time from reconstructive surgery;
- Dosimetric data referring to the chest wall: prescribed dose, conformity index, homogeneity index, and V95% and V105%.

Records were automatically extracted and the output was structured according to the standard needs of a data science team (e.g., a .csv file with all selected records processed on a flat table with specific column names and without any identifying information).

Validation benchmarks were:

- Uploading at least 80% of chart data by the data manager without physician assistance;
- Physician correction of <20% of uploaded data;
- Extraction of at least 80% of data for statistical analyses;
- Joint physician and statistician correction of <20% of extracted data;
- Performance of at least 80% of planned statistical analyses on RStudio®.

3. Results

3.1. Setting up *BLADE* (June 2016)

The 12-month timeline for completing *BLADE* overran by more than 1 year due to the quantity and complexity of the information. For example, Step 2 lasted 18 months, during which the working group met three times for variable selection and three times for variable validation. In July 2018, after reaching 80% consensus, a total of 218 variables were successfully uploaded to constitute the *BLADE* domain. Figure 4 reports as an example, the definition of the radiotherapy variable according to OpenClinica criteria.

	ID	CRF_NAME	QUESTION_NUMBER	SECTION_NAME	SECTION_LABEL	ITEM_NAME	DESCRIPTION_LABEL
0	6518	Radiotherapy	1	Radiotherapy	Radiotherapy	DateofRadiotherapyStarting	Date of Radiotherapy Starting
1	6519	Radiotherapy	2	Radiotherapy	Radiotherapy	DateofRadiotherapyEnding	Date of Radiotherapy Ending
2	6520	Radiotherapy	3	Radiotherapy	Radiotherapy	RadiotherapyTargetVolumes	Target Volumes prescribed
3	6521	Radiotherapy	4	Radiotherapy	Radiotherapy	VolumeCTVTumorBed	Volume (cc) CTV Tumor Bed
4	6522	Radiotherapy	5	Radiotherapy	Radiotherapy	VolumePTVTumorBed	Volume (cc) PTV Tumor Bed
5	6523	Radiotherapy	6	Radiotherapy	Radiotherapy	TimingTumorBed	Timing of Tumor Bed Administration
6	6524	Radiotherapy	7	Radiotherapy	Radiotherapy	TotalDoseTumorBed	Total Dose at Tumor Bed
7	6525	Radiotherapy	8	Radiotherapy	Radiotherapy	FractionDoseTumorBed	Dose for fraction at Tumor Bed
8	6526	Radiotherapy	9	Radiotherapy	Radiotherapy	FractionforDayTumorBed	Number of Daily Fraction at Tumor Bed
9	6527	Radiotherapy	10	Radiotherapy	Radiotherapy	RadiotherapyTechniqueTumorBed	Radiotherapy Technique used for treat Tumor Bed
10	6528	Radiotherapy	11	Radiotherapy	Radiotherapy	VolumeCTVBreast/ChestWall	Volume (cc) CTV Breast/ChestWall
11	6529	Radiotherapy	12	Radiotherapy	Radiotherapy	VolumePTVBreast/ChestWall	Volume (cc) PTV Breast/ChestWall
12	6530	Radiotherapy	13	Radiotherapy	Radiotherapy	TotalDoseBreast/ChestWall	Total Dose at Breast/ChestWall
13	6531	Radiotherapy	14	Radiotherapy	Radiotherapy	FractionDoseBreast/ChestWall	Dose for fraction at Breast/ChestWall
14	6532	Radiotherapy	15	Radiotherapy	Radiotherapy	FractionforDayBreast/ChestWall	Number of Daily Fraction at Breast/ChestWall
15	6533	Radiotherapy	16	Radiotherapy	Radiotherapy	RadiotherapyTechniqueBreast/ChestWall	Radiotherapy Technique used for treat Breast/ChestWall

Figure 4. Example of a CRF configuration file. The columns represent various mandatory configuration settings for BOA and are to be interpreted as follows: The ID column represents an internal identifier and is generated automatically when the CRF is first uploaded. CRF_NAME refers to the name by which the CRF is to be visualized in the UI. QUESTION_NUMBER can either be automatically assigned or manually set, and refers to the ordering of the various questions inside the CRF, with SECTION_NAME and SECTION_LABEL working as visual dividers when the questions are displayed in the interface, with the former being the name to be used in the UI code, and the latter being the name to be displayed. ITEM_NAME and DESCRIPTION_LABEL work in a similar manner, with the former being the identifier in the underlying code and the latter being the name of the text to be displayed with the question in the UI.

The variables were organized into seven main CRFs corresponding to the knowledge domains, which were the interfaces for uploading encrypted patient data. In parallel with the data entry expert's work, automatic testing tools in BOA tested specific characteristics in reference to the *BLADE* domain and generated synthetic patients. BOA tested both itself and the linked infrastructure by generating 5000 synthetic patients with a variable number of CRFs, and randomly created data in the space of nearly 20 min. To test performance, 30 fake user agents were connected to the interface and random pages from the web-service were requested for deletion or modification. Numbers for testing tool input were over a hypothetical maximum simultaneous workload for the *BLADE* project. Throughout these tests, no noticeable performance degradations were revealed, no abnormalities in the data structure or integrity were found, and no information leaked in the fake user sessions due to, for example, wrongly configured page-caching settings.

The privacy protection protocol was initially approved by the Ethical Committee of Fondazione Policlinico Gemelli IRCCS with protocol no. 0043996/18 in October 2018.

3.2. *BLADE* Data Safety Tests (January 2019)

To check that the *BLADE* domain was uploaded correctly, informatics analyzed accuracy, conservation limitation of data, data integrity, and data flows between application and data processing on 15 charts from randomly chosen patients. They completely adhered to EU GDPR criteria as reported in Article 32 Security of Processing [22,23]. Uploaded data were not linked to individual patients. Technical and organizational effectiveness measures did not break confidentiality, integrity, availability, and resiliency. Simulated physical and technical accidents showed no loss of data.

3.3. Validation (February–July 2019)

The physician's review increased 81.5% of uploaded data from 64 patients to 84% and corrected 10% of uploaded and missing data. The following were corrected: compile-time errors due to the data manager's lack of experience with *BLADE* (7.5%); missing data (8.5%).

For statistical analysis, 100% of clinical, treatment and tumor-related data, 80% of reconstruction data, and 98% of dosimetric data were available. Mean available data ranged from 92.6% to 94.5%, corresponding to <20% validation benchmarks. All the planned statistical analyses were performed.

4. Discussion

The *BLADE* project was set up to support ATTM research into breast cancer, with the aim of providing decision support systems to facilitate clinical decision-making and treatment tailoring. In the 2016 ATTM [13], attention focused on developing such a system from the potentially large database that was available from clinical records, not only in radiation oncology centers, but in many other specialty units (e.g., surgery, pathology, medical oncology, etc.) that are dedicated to the diagnosis and treatment of breast cancer.

The present results showed that *BLADE* is a valid system for collecting data anonymously, as its encryption system successfully passed the tests, satisfying GDPR criteria and benchmarks. Data managers were accountable for only 7.5% of errors, some of which were corrected during the physician's review. Regarding radiation therapy, *BLADE* uniquely focuses on clinical, technical and dosimetric parameters, which makes it particularly suitable for analyzing radiation-therapy-related outcomes and toxicity.

One of the strengths of *BLADE*'s ontology lies in its validated variables that were uploaded after a multi-step process involving the consensus of a multidisciplinary team. Unlike other large databases for breast cancer, *BLADE* provides health workers with the opportunity to focus on diverse fields in the diagnosis and treatment of breast cancer, as it is based on the acquisition of the pathways and the heterogeneity characterizing breast cancer [24–28]. Although several large national databases were set up, none were based on validated, published ontologies [25–28], and few could offer decision support systems [29–33]. Most were developed to investigate long-term survival outcomes such as, for example, the Surveillance, Epidemiology, and End Results (SEER) database, which was set up by the U.S. National Cancer Institute (NCI) and reports annually on the data it has collected on breast cancer from nine American oncological centers [29–31].

Another strength of the *BLADE* system is its capacity to incorporate new, validated variables or mathematical algorithms for assessing, for example, the success of treatment or a strategy for monitoring clinical outcomes and cost-effectiveness. In the future, it might include accreditation or valuation indicators for associated centers, update evidence or guidelines, and incorporate new sectors such as proteomics, complementary medicines, etc.

One limiting factor of the present study was linked to *BLADE*'s small homogeneous sample and its inability to upload digital imaging and communications in medicine (DICOM) data, which will be very relevant when *BLADE* is used to develop prediction models. DICOM data and RT planning information will be uploaded with the 2022 *BLADE* upgrade, which will create a unique data repository [34]. A lack of testing of *BLADE*'s ability to perform machine learning analysis, an upcoming modality in cancer care, especially for predicting response to treatment, is a current limitation that is expected to be eliminated in the future. Using algorithms that iteratively learn from data, machine learning allows computers to find hidden insights without being explicitly programmed where to look, while inferential statistics need different tools to achieve this purpose, such as Bayesian networks, support vector machines, neural networking, and Cox regression. Machine learning is now starting to flank inferential statistical models (e.g., linear models, generalized linear models, and survival models), and its success over inferential statistics has already been reported together with the first promising results of its use in building predictive models of cancer survival [10,15,19]. We are confident that when *BLADE* is expanded to systematic multi-center use, machine learning analysis will become a reality and systems for decision-making support will be developed and validated, as *BLADE* is projected for a huge number of patients who will provide millions of data for analyses.

In the near future, we will use *BLADE* in our clinical daily practice to collect retrospective and prospective data and analyze outcomes to assess the role of post-mastectomy radiation therapy in ductal in situ patients. This approach is derived from a 2019 survey by an ATTM research group [35], identifying this topic as a grey area in current practice.

5. Conclusions

BLADE, one of the projects emerging from the 2016 ATTM [13], is a support system for breast cancer care. In successfully developing and validating it as a standardized data collection system, multidisciplinary collaboration was crucial for selecting its ontology and knowledge domains. *BLADE* is suitable for multi-center uploading of retrospective and prospective clinical data, as it ensures anonymity and data privacy.

Finally, *BLADE* may constitute an international instrument for research purposes to be used by ATTM-like research groups [36].

Supplementary Materials: The following are available online at www.mdpi.com/2075-4426/11/2/143/s1, Supplementary Materials file 1: CRFs, Supplementary Materials file 2: Explanations of CRF Definitions.

Author Contributions: Conceptualization, C.A., V.V. and P.M.P.P.; methodology C.A., N.D.C., F.M. (Fabio Marazzi), C.M., M.M. and V.M.; software, N.D.C.; validation, C.A., V.V. and P.M.P.P.; formal analysis C.A., F.M. (Fabio Marazzi), V.M., M.M. and N.D.C.; investigation C.A., F.M. (Fabio Marazzi), V.M., M.M. and N.D.C.; resources V.V.; data curation C.A., F.M. (Fabio Marazzi), V.M., M.M. and N.D.C.; writing—original draft preparation C.A., F.M. (Fabio Marazzi), M.M. and V.M.; writing—review and editing, F.M. (Fabio Marazzi), V.M., M.M., S.S., P.B., L.B., N.D.C., A.D.L., S.M., E.M., F.M. (Francesca Moschella), A.M., D.S., D.A.T., L.T., G.F., M.A.G., R.M., V.V., P.M.P.P. and C.A.; visualization F.M. (Fabio Marazzi), V.M., M.M., S.S., P.B., L.B., N.D.C., A.D.L., S.M., E.M., F.M. (Francesca Moschella), A.M., D.S., D.A.T., L.T., G.F., M.A.G., R.M., V.V., P.M.P.P. and C.A.; supervision C.A., P.M.P.P. and V.V.; project administration, C.A., V.V., P.M.P.P., F.M. (Fabio Marazzi) and V.M.; funding acquisition V.V. All authors have read and agreed to the published version of the manuscript.

Funding: This research received no external funding.

Institutional Review Board Statement: The study was conducted according to the guidelines of the Declaration of Helsinki, and approved by the Institutional Review Board (or Ethics Committee) of Fondazione Policlinico A. Gemelli IRCCS (protocol code N. 0043996/18—31.10.2018).

Informed Consent Statement: Not applicable.

Conflicts of Interest: The authors declare no conflict of interest.

Information to Join ATTM.BLADE Network and/or Propose Research Project: MD. Vincenzo Valentini—vincenzo.valentini@policlinicogemelli.it; Prof. MD. Cynthia Aristei—cynthia.aristei@unipg.it; MD. Fabio Marazzi—fabio.marazzi@policlinicogemelli.it; MD. Valeria Masiello—vale-ria.masiello@guest.policlinicogemelli.it.

Reference

1. Torre, L.A.; Islami, F.; Siegel, R.L.; Ward, E.M.; Jemal, A. Global Cancer in Women: Burden and Trends. *Cancer Epidemiol. Biomark. Prev.* **2017**, *26*, 444–457, doi:10.1158/1055-9965.epi-16-0858.
2. Martin, E.; Pourtau, L.; Di Palma, M.; Delaloge, S. New oral targeted therapies for metastatic breast cancer disrupt the traditional patients' management-A healthcare providers' view. *Eur. J. Cancer Care* **2016**, *26*, e12624, doi:10.1111/ecc.12624.
3. Yu, J.; Hu, T.; Chen, Y. Small-arc volumetric-modulated arc therapy: A new approach that is superior to fixed-field IMRT in optimizing dosimetric and treatment-relevant parameters for patients undergoing whole-breast irradiation following breast-conserving surgery. *Medicine* **2016**, *95*, e4609, doi:10.1097/MD.0000000000004609.
4. Blaschke, S.-M.; Gough, K.C.; Chua, B.H.; Francis, P.A.; Cockerell, R.; Drosdowsky, A.F.; Sheeran, L.; Krishnasamy, M. Implementation of a Multidisciplinary Model of Care for Women With Metastatic Breast Cancer: Challenges and Lessons Learned. *Clin. Breast Cancer* **2019**, *19*, e327–e336, doi:10.1016/j.clbc.2018.12.014.
5. Di Paolo, A.; Sarkozy, F.; Ryll, B.; Siebert, U. Personalized medicine in Europe: Not yet personal enough? *BMC Health Serv. Res.* **2017**, *17*, 1–9, doi:10.1186/s12913-017-2205-4.
6. Burock, S.; Meunier, F.; Lacombe, D. How can innovative forms of clinical research contribute to deliver affordable cancer care in an evolving health care environment? *Eur. J. Cancer* **2013**, *49*, 2777–2783, doi:10.1016/j.ejca.2013.05.016.

7. Duburs, G.; Neibecker, D.; Žarković, N. Chemistry and personalized medicine—the research and development future of Europe. *Croat. Med. J.* **2012**, *53*, 291–293, doi:10.3325/cmj.2012.53.291.
8. Thall, P.F. Ethical issues in oncology biostatistics. *Stat. Methods Med. Res.* **2002**, *11*, 429–448, doi:10.1191/0962280202sm301ra.
9. Meldolesi, E.; Van Soest, J.; Damiani, A.; Dekker, A.; Alitto, A.R.; Campitelli, M.; DiNapoli, N.; Gatta, R.; Gambacorta, M.A.; Lanzotti, V.; et al. Standardized data collection to build prediction models in oncology: A prototype for rectal cancer. *Future Oncol.* **2016**, *12*, 119–136, doi:10.2217/fon.15.295.
10. Lambin, P.; Roelofs, E.; Reymen, B.; Velazquez, E.R.; Buijsen, J.; Zegers, C.M.; Carvalho, S.; Leijenaar, R.T.; Nalbantov, G.; Oberije, C.; et al. ‘Rapid Learning health care in oncology’—An approach towards decision support systems enabling customised radiotherapy’. *Radiother. Oncol.* **2013**, *109*, 159–164, doi:10.1016/j.radonc.2013.07.007.
11. Lambin, P.; Zindler, J.; Vanneste, B.; Van De Voorde, L.; Jacobs, M.; Eekers, D.; Peerlings, J.; Reymen, B.; LaRue, R.T.H.M.; Deist, T.M.; et al. Modern clinical research: How rapid learning health care and cohort multiple randomised clinical trials complement traditional evidence based medicine. *Acta Oncol.* **2015**, *54*, 1289–1300, doi:10.3109/0284186x.2015.1062136.
12. Guihard, S.; Thariat, J.; Clavier, J.-B. Méta-données et leurs applications possibles en radiothérapie. *Bull. du Cancer* **2017**, *104*, 147–156, doi:10.1016/j.bulcan.2016.10.018.
13. Aristei, C.; Kaidar-Person, O.; Arenas, M.; Coles, C.; Offersen, B.V.; Bourgier, C.; Frezza, G.; Leonardi, M.C.; Valentini, V.; Poortmans, P.M.P. The 2016 Assisi Think Tank Meeting on breast cancer: White paper. *Breast Cancer Res. Treat.* **2016**, *160*, 211–221, doi:10.1007/s10549-016-3998-2.
14. Meldolesi, E.; Van Soest, J.; DiNapoli, N.; Dekker, A.; Damiani, A.; Gambacorta, M.A.; Valentini, V. An umbrella protocol for standardized data collection (SDC) in rectal cancer: A prospective uniform naming and procedure convention to support personalized medicine. *Radiother. Oncol.* **2014**, *112*, 59–62, doi:10.1016/j.radonc.2014.04.008.
15. Meldolesi, E.; Van Soest, J.; Alitto, A.R.; Autorino, R.; DiNapoli, N.; Dekker, A.; Gambacorta, M.A.; Gatta, R.; Tagliaferri, L.; Damiani, A.; et al. VATE: VALidation of high TEchnology based on large database analysis by learning machine. *Colorectal Cancer* **2014**, *3*, 435–450, doi:10.2217/crc.14.34.
16. Alitto, A.R.; Gatta, R.; Vanneste, B.; Vallati, M.; Meldolesi, E.; Damiani, A.; Lanzotti, V.; Mattiucci, G.C.; Frascino, V.; Masciocchi, C.; et al. PRODIGE: PRediction models in prOstate cancer for personalized meDICine challenGE. *Futur. Oncol.* **2017**, *13*, 2171–2181, doi:10.2217/fon-2017-0142.
17. Wilson, G. Gantt charts: A centenary appreciation. *Eur. J. Oper. Res.* **2003**, *149*, 430–437.
18. National Comprehensive Cancer Network. *NCCN Clinical Practice Guidelines in Oncology (NCCN Guidelines) Breast Cancer*; NCCN: Plymouth Meeting, PA, USA, 2020.
19. Smith, B.D.; Bellon, J.R.; Blitzblau, R.; Freedman, G.; Haffty, B.; Hahn, C.; Halberg, F.; Hoffman, K.; Horst, K.; Moran, J.; et al. Radiation therapy for the whole breast: Executive summary of an American Society for Radiation Oncology (ASTRO) evidence-based guideline. *Pr. Radiat. Oncol.* **2018**, *8*, 145–152, doi:10.1016/j.prro.2018.01.012.
20. GRUPPO DI COORDINAMENTO AIRO MAMMELLA Triennio 2017–2019, *Best Clinical Practice Nella Radioterapia dei Tumori Della Mammella*; Sede Legale: Milano, Italy, 2019. Available online: radioterapiaitalia.it (accessed on 1 February 2021).
21. Baumann, B. Create and Modify Case Report Forms (CRFs). 24 March 2014. Available online: <https://docs.openclinica.com/3.1/study-setup/build-study/create-case-report-forms-crfs> (accessed on 10 June 2016).
22. Guidelines 2/2019 on the Processing of Personal Data under Article 6(1)(b) GDPR in the Context of the Provision of Online Services to Data Subjects-Version Adopted after Public Consultation. Available online: https://edpb.europa.eu/our-work-tools/our-documents/guidelines/guidelines-22019-processing-personal-data-under-article-61b_en (accessed on 31 October 2018).
23. Article 32, EU GDPR, “Security of Processing”. Available online: <http://www.privacy-regulation.eu/en/32.htm> (accessed on 31 October 2018).
24. Liou, D.-M.; Chang, W.-P. Applying Data Mining for the Analysis of Breast Cancer Data. *Methods Mol. Biol.* **2014**, *1246*, 175–189, doi:10.1007/978-1-4939-1985-7_12.
25. Melo, M.T.D.; Gonçalves, V.H.L.; Costa, H.D.R.; Braga, D.S.; Gomide, L.B.; Alves, C.S.; Brasil, L.M. OntoMama: An Ontology Applied to Breast Cancer. *Stud. Health Technol. Inform.* **2015**, *216*, 1104.
26. Zhu, Q.; Tao, C.; Shen, F.; Chute, C.G. Exploring the Pharmacogenomics Knowledge Base (Pharmgkb) for Repositioning Breast Cancer Drugs by Leveraging Web Ontology Language (Owl) and Cheminformatics Approaches. In *Pac Symp Biocomput*; World Scientific: Singapore, 2013; pp. 172–82.
27. Papatheodorou, I.; METABRIC Group; Crichton, C.; Morris, L.; Maccallum, P.; Davies, J.; Brenton, J.D.; Caldas, C. A metadata approach for clinical data management in translational genomics studies in breast cancer. *BMC Med. Genom.* **2009**, *2*, 1–10, doi:10.1186/1755-8794-2-66.
28. Abidi, S.R.; Abidi, S.S.; Hussain, S.; Shepherd, M. Ontology-based Modeling of Clinical Practice Guidelines: A Clinical Decision Support System for Breast Cancer Follow-up Interventions at Primary Care Settings. *Stud. Health Technol. Inform.* **2007**, *129*, 845–849.
29. Wu, S.-G.; Li, H.; Tang, L.-Y.; Sun, J.-Y.; Zhang, W.-W.; Li, F.-Y.; Chen, Y.-X.; He, Z.-Y. The effect of distant metastases sites on survival in de novo stage-IV breast cancer: A SEER database analysis. *Tumor Biol.* **2017**, *39*, 101042831770508, doi:10.1177/1010428317705082.

30. Murthy, V.; Pawar, S.; Chamberlain, R.S. Disease Severity, Presentation, and Clinical Outcomes Among Adolescents With Malignant Breast Neoplasms: A 20-Year Population-Based Outcomes Study From the SEER Database (1973–2009). *Clin. Breast Cancer* **2017**, *17*, 392–398, doi:10.1016/j.clbc.2017.03.006.
31. Liu, J.; Su, M.; Hong, S.; Gao, H.; Zheng, X.; Wang, S. Nomogram predicts survival benefit from preoperative radiotherapy for non-metastatic breast cancer: A SEER-based study. *Oncotarget* **2017**, *8*, 49861–49868, doi:10.18632/oncotarget.17991.
32. Plasilova, M.L.; Hayse, B.; Killelea, B.K.; Horowitz, N.R.; Chagpar, A.B.; Lannin, D.R. Features of triple-negative breast cancer. *Medicine* **2016**, *95*, e4614, doi:10.1097/md.00000000000004614.
33. Diwanji, T.P.; Molitoris, J.K.; Chhabra, A.M.; Snider, J.W.; Bentzen, S.M.; Tkaczuk, K.H.; Rosenblatt, P.Y.; Kesmodel, S.B.; Bellavance, E.C.; Cohen, R.J.; et al. Utilization of hypofractionated whole-breast radiation therapy in patients receiving chemotherapy: A National Cancer Database analysis. *Breast Cancer Res. Treat.* **2017**, *165*, 445–453, doi:10.1007/s10549-017-4345-y.
34. Marazzi, F.; Tagliaferri, L.; Masiello, V.; Moschella, F.; Colloca, G.F.; Corvari, B.; Sanchez, A.M.; Capocchiano, N.D.; Pastorino, R.; Iacomini, C.; et al. GENERATOR Breast DataMart—The Novel Breast Cancer Data Discovery System for Research and Monitoring: Preliminary Results and Future Perspectives. *J. Pers. Med.* **2021**, *11*, 65, doi:10.3390/jpm11020065.
35. Montero-Luis, A.; Aristei, C.; Meattini, I.; Arenas, M.; Boersma, L.; Bourgier, C.; Coles, C.; Cutuli, B.; Falcinelli, L.; Kaidar-Person, O.; et al. The Assisi Think Tank Meeting Survey of post-mastectomy radiation therapy in ductal carcinoma in situ: Suggestions for routine practice. *Crit. Rev. Oncol.* **2019**, *138*, 207–213, doi:10.1016/j.critrevonc.2019.04.016.
36. Arenas, M.; Selek, U.; Kaidar-Person, O.; Perrucci, E.; Luis, A.M.; Boersma, L.; Coles, C.; Offersen, B.; Meattini, I.; Bölükbaşı, Y.; et al. The 2018 assisi think tank meeting on breast cancer: International expert panel white paper. *Crit. Rev. Oncol.* **2020**, *151*, 102967, doi:10.1016/j.critrevonc.2020.102967.