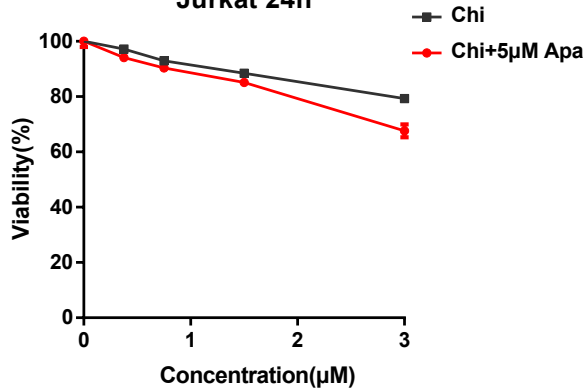
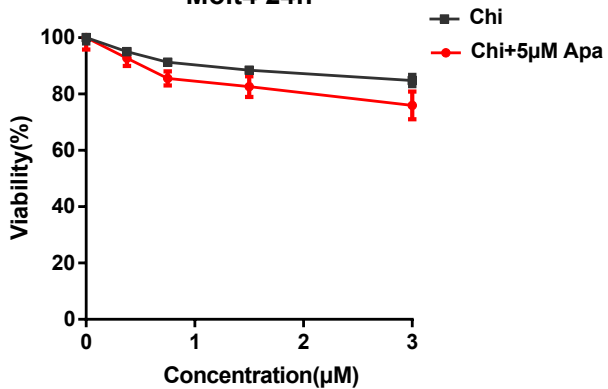
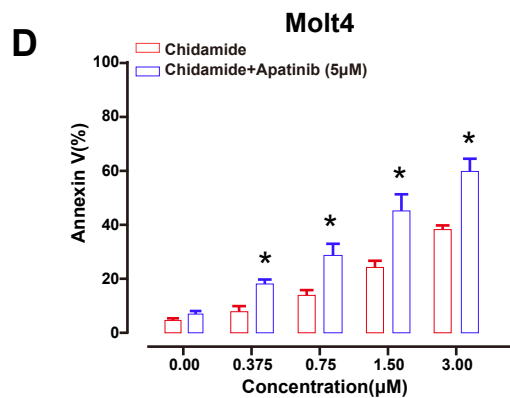
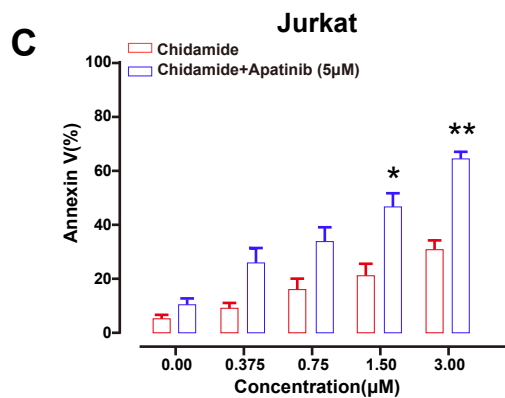
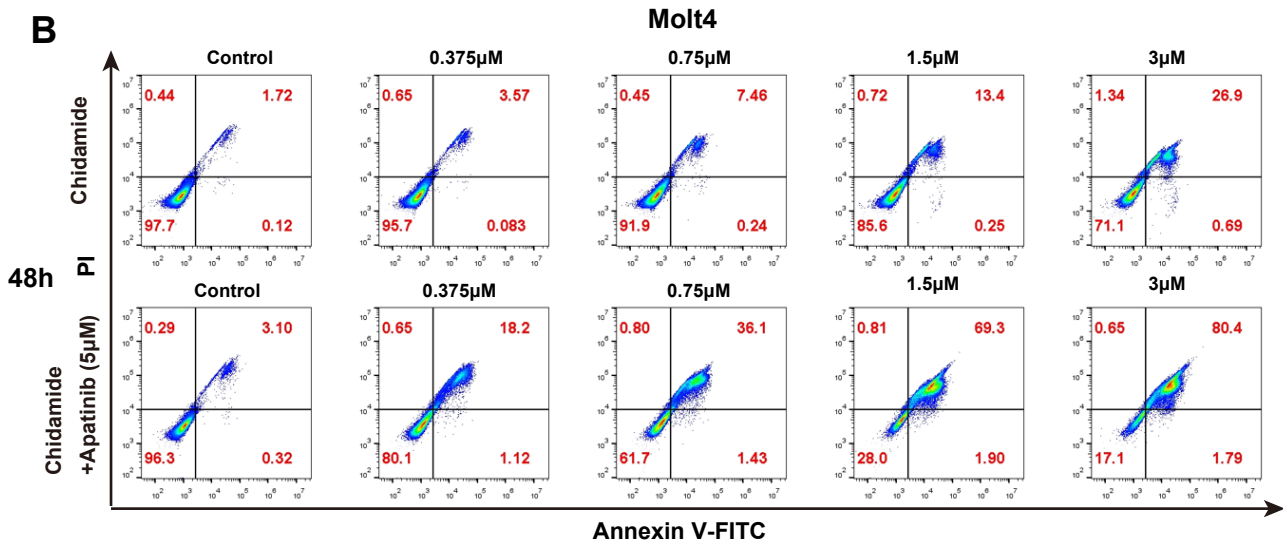
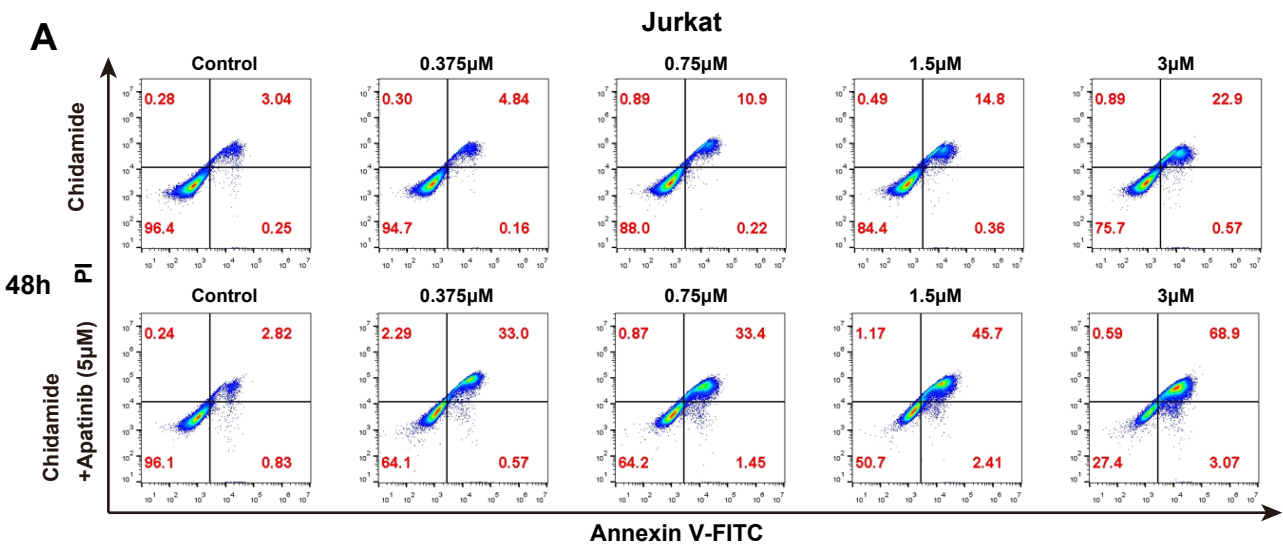
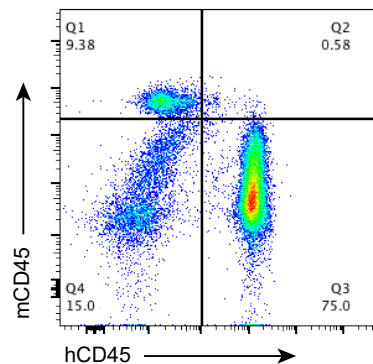
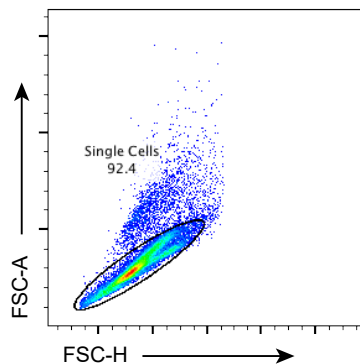
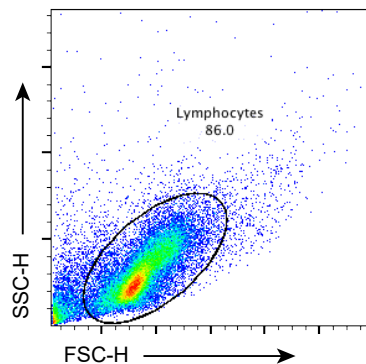
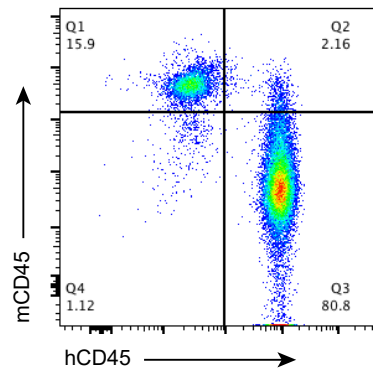
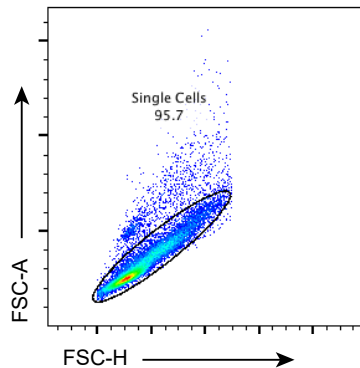
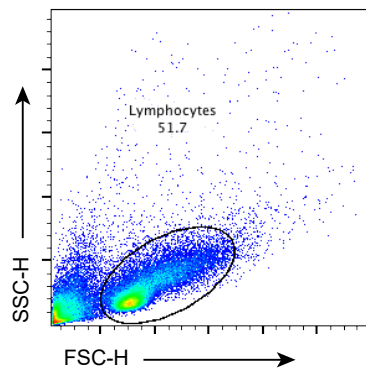


A**Jurkat 24h****B****Molt4 24h**



A**hCD45 in BM****B****hCD45 in SP**

Supplementary Table S1. Primer sequences for qRT-PCR assay.

qRT-PCR primer sequence		
Primers	Forward/Reverse	5'-3'
β -actin	F	AGCGAGCATCCCCCAAAGTT
	R	GGGCACGAAGGCTCATCATT
COX10	F	AGGTTGCGTAGGAGGCTCTGTC
	R	GCTGTGTGACATACATGCGTTTGAG
MPC1	F	CGAAGCAAGGATTTCCGGGACTAC
	R	TTGATGGCAGCAATGGGAAGACC
SDHD	F	CTTGTCACCGAGCCACCATTCTG
	R	GGAATAGTCCATCGCAGAGCAAGG
MDH1	F	CGTCAGGGACATCTGGTTTGGAAC
	R	GGAACACCATAGGAGTTGCCATCAG
PDHA1	F	CACAGACCATCTCATCACAGCCTAC
	R	CCTCCTTTCCCTTTAGCACAAACCTC
CS	F	TGCCCTTTCCGACCCTTACCTG
	R	TGTGTTAGCCAGACAAGCACTTCC

Supplementary Table 2. Clinical characteristics of a T-ALL patient whose blast cells were employed to establish PDX model.

Disease Characteristics	Specific information
Phenotype	T-ALL
Gender	Male
Age (years)	31
WBC	289.44*10 ⁹ /L
HGB	129 g/L
PLT	11*10 ⁹ /L
LDH	2091 U/L
Percentage of blast cells in bone marrow	92.5%
Percentage of blast cells in peripheral blood	92%
Karyotype	TCRB, TCRG, TCRD rearrangement positive
Genetic alterations	NOTCH1 nonsense mutation, PTEN frameshift mutation
Xenograft engraftment method	Tail vein injection