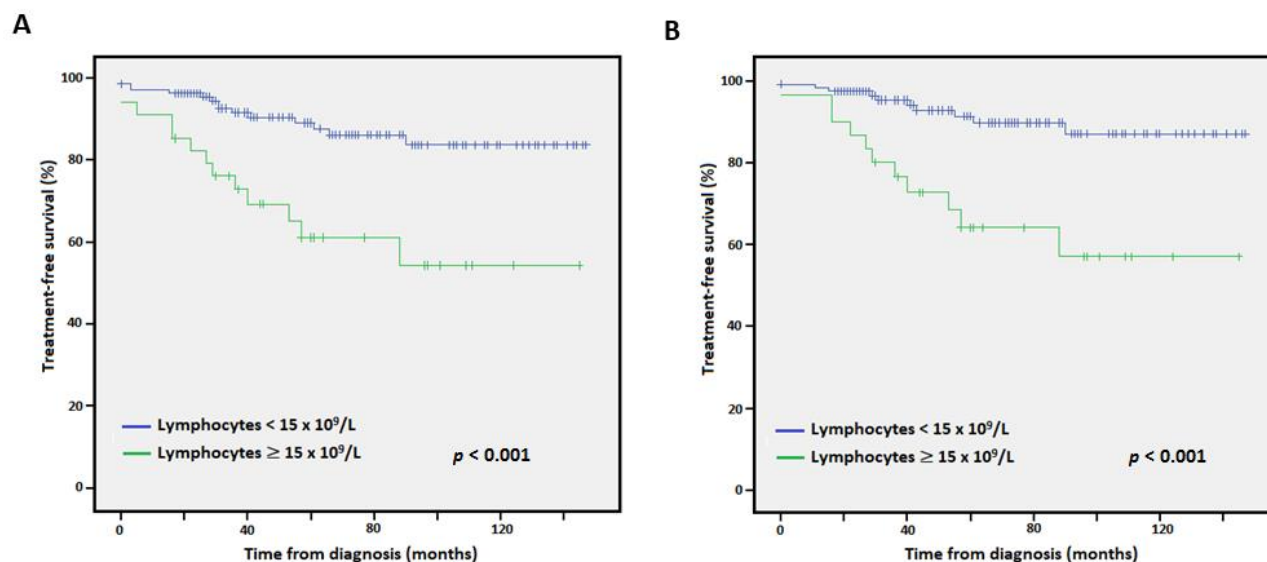


SUPPLEMENTARY DATA

Supplementary Figure S1. Kaplan-Meier treatment-free survival curves for early-stage patients according to lymphocyte count, **A)** Rai stages 0-2, and **B)** Binet stages A.



Supplementary Table S1. Characteristics of the consecutive series of adult CLL patients.

Characteristic	Total	n/mean (% or range)
Age, mean (years)	217	70 (16-91)
Sex	217	
Male		123 (57.1)
Female		94 (42.9)
Rai stage	217	
0		154 (70.6)
I		38 (17.4)
II		10 (4.6)
III-IV		15 (6.9)
Binet stage	217	
A		174 (80.2)
B		34 (15.7)
C		9 (4.1)
IPI	70	
Low		37 (52.9)
Intermediate		19 (27.1)
High		12 (17.1)
Very high		2 (2.9)
Treatment	215	
No		160 (74.4)
Yes		55 (25.6)
Treatment type	57	
FCR		15
Chlorambucil		15
Ibrutinib		8
R-Benda		7
Chlorambucil + Obinutuzumab		5
Rituximab		3
CHOP/R-CHOP		2
Alentuzumab + TPH		1
Radiotherapy		1
Beta-2 microglobulin, mean (mg/L)	150	2.4 (1.1-16.1)
Hierarchic FISH category		
17p deletion	150	9 (6)
11q deletion	148	8 (5.4)
12 trisomy	149	31 (20.8)
13q deletion	149	75 (50.3)
IGHV mutation status	109	
Unmutated		41 (37.6)
Mutated		68 (62.4)
Exitus	217	
No		177 (81.6)
Yes		22 (10.1)
Lost to follow-up		18 (8.3)

Supplementary Table S2. Five-year overall survival of the CLL-IPI categories [18] versus our series of CLL patients. OS, overall survival; iwCLL, International Workshop on Chronic Lymphocytic Leukemia (2018) [6].

		iwCLL series			Our series	
CLL-IPI category		<i>n</i>	5-year OS (%)		<i>n</i>	5-year OS (%)
Low-risk		341	93.2		36	100.0
Intermediate-risk		474	79.3		19	94.0
High-risk		337	63.3		12	74.0
Very high-risk		62	23.3		2	-