

Supplementary Materials

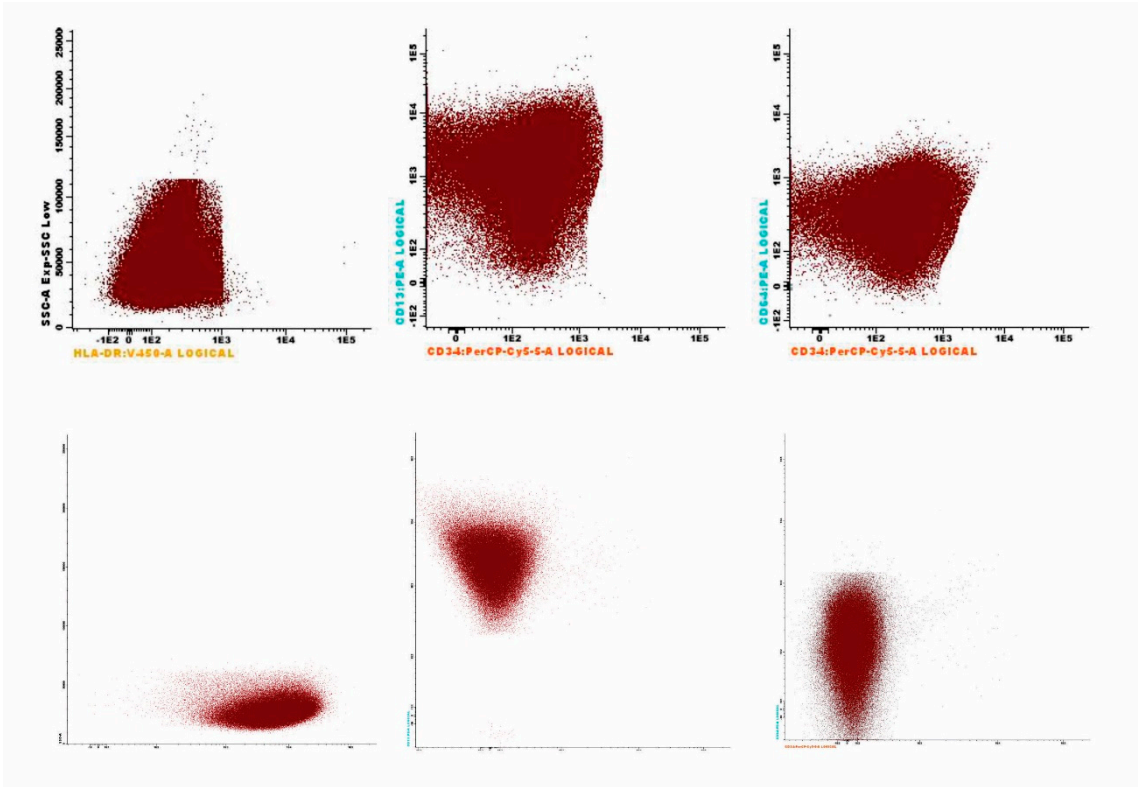
Supplementary Table S1. Antibody combinations used.

	FITC	PE	PERPCy5.5	PECy7	APC	APCH7	V450	V500
1	CD16	CD13	CD34	CD117	CD11b	CD14	HLA-DR	CD45
2	CD35	CD64	CD34	CD14	CD33	CD14	HLADR	CD45

Supplementary Table S2. Antibody clones.

Antibody	Clone
CD16	CLB/FcGran1
CD35	E11
CD13	WM15
CD64	10.1
CD34	8G12
CD117	104D2
CD11b	ICRF44
CD33	WM53
CD14	MφP9
HLA-DR	G46-6
CD45	HI30

All antibodies were purchased from Becton Dickinson (BD).



Supplementary Figure S1. Dot plots comparing the flow features discriminating APL and AML with a normal karyotype and NPM1 mutation. APL had a higher SSC, was negative for HLA-DR and CD34, and had a higher expression of CD13 and CD64.