

Supplementary Materials

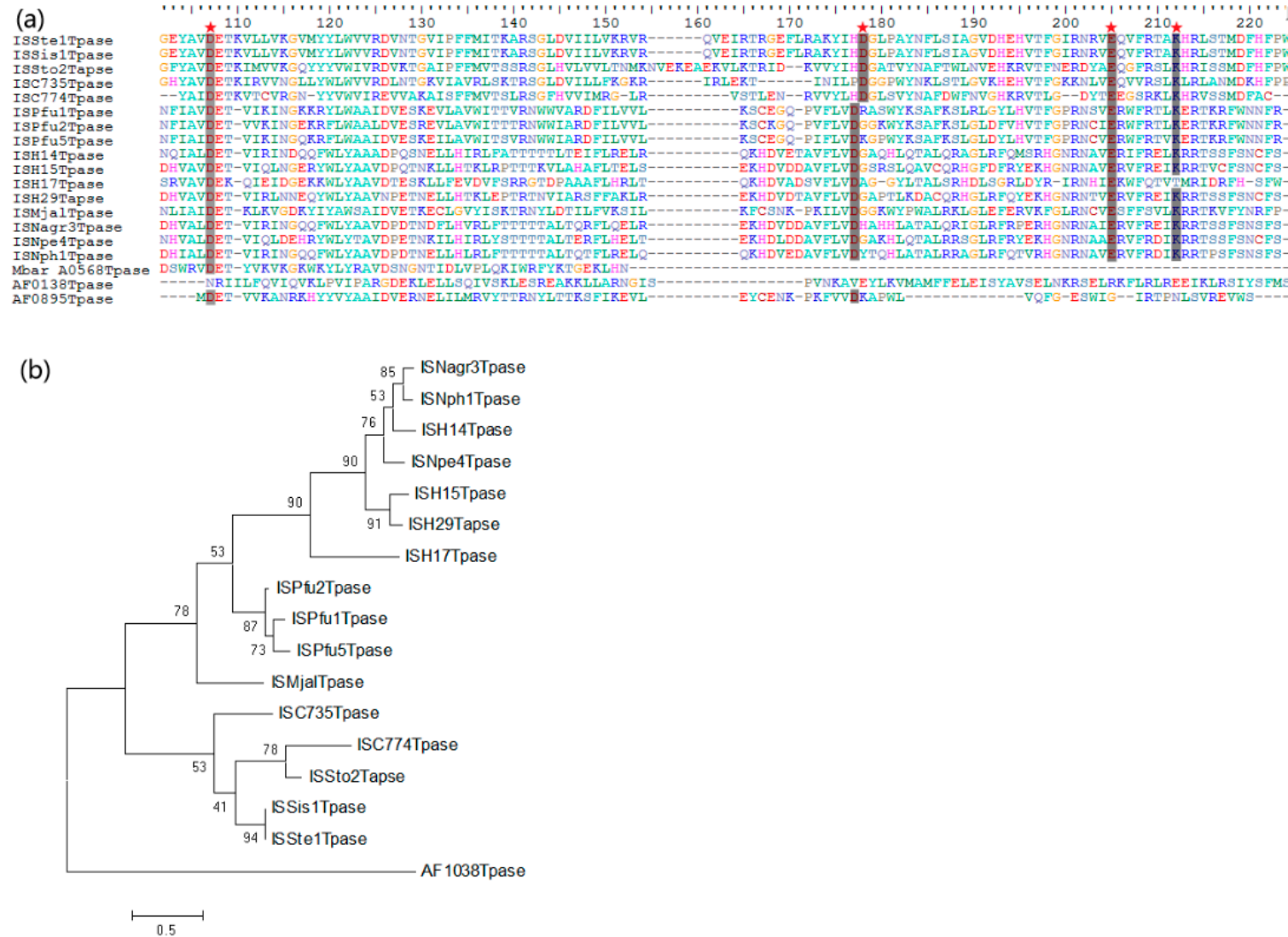


Figure S1. (a) Sequence alignment of the conserved DDE domains of transposases of the *IS6* family. Amino acid residues D...D...E...K are shown in grey background (b) Phylogenetic tree of transposases of the *IS6* family.

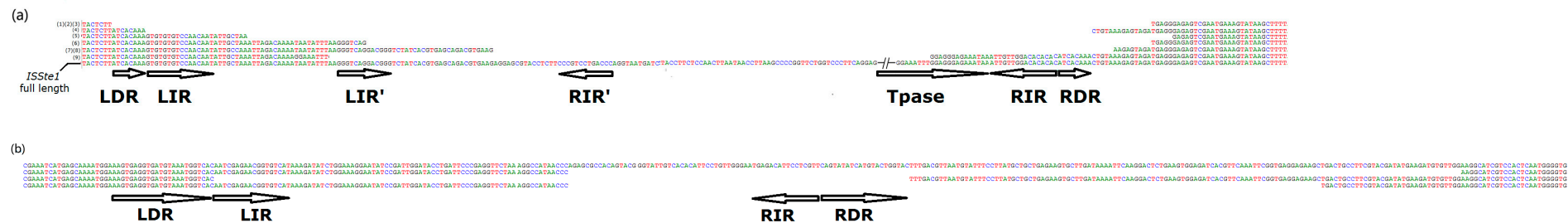


Figure S2. Sequences of deletions at the sites of transposition by *ISSte1* (a) and MITE (b). See Figure 5 for deletion categories.