

Supplementary material

Table S1. Primer sequences used in RT-qPCR analysis.

NCBI Symbol	Gene	Forward primer sequence	Reverse primer sequence
Actb	Actin beta	GCGCAAGTACTCTGTGTGGA	GGCATCATTGACGACATCGAG
Adipoq	Adiponectin	GAGACGCAGGTGTTCTTG	CCTACGCTGAATGCTGAG
Atgl	Adipose triglyceride lipase	AGACTGTCTGAGCAGGTGGA	AGTAGCTGACGCTGGCATTG
Cebpb	CCAAT enhancer binding protein beta	GACAAGCTGAGCGACGAGTA	AGCTGCTCCACCTTCTTCTG
Cidea	Cell Death Inducing DFFA Like Effector A	TGACATTCATGGGGTTGCAGA	GGCCAGTTGTGATGACCAAGA
Dio2	Iodothyronine deiodinase 2	AGAAGTGGGAGTTGGCTTCG	ACTCTCTGACCGGATGACGA
Fasn	Fatty acid synthase	GGTAGGCTTGGTGAAGTGTCTC	TCTAACTGGAAGTGACGGAAGG
Fgf21	Fibroblast growth factor 21	AGGCTTTGACACCCAGGATT	ACAGATGACGACCAAGGACAC
Glut4	Glucose transporter 4	ATCAACGCCCCACAGAAAGT	CCTGCCTACCCAGCCAAGT
Hes1	Hes family bHLH transcription factor 1	CGACACCGGACAAACCAAA	GAATGTCTGCCTTCTCCAGCTT
Notch1	Neurogenic locus notch homolog	ATGACCTAGGCAAGTCAGCTC	ATTCATCCAAAAGCCGCACG
Ppara	Peroxisome proliferator activated receptor alpha	CCCTCGGAGAGGAGATTCC	GCTGGAGAGAGGGTGTCTGT
Pparg	Peroxisome proliferator activated receptor gamma	TCGCTGATGCACTGCCTATG	TGATTCCGAAGTTGGTGGGC
Ppargc1a	PPARG coactivator 1 alfa	GGACATGTGCAGCCAAGACTCT	CACTTCAATCCACCCAGAAAGCT
Ucp1	Uncoupling protein 1	GGGCTGATTCTTTTGGTCTCT	GGGTTGCATTCTCGAAGTTGT

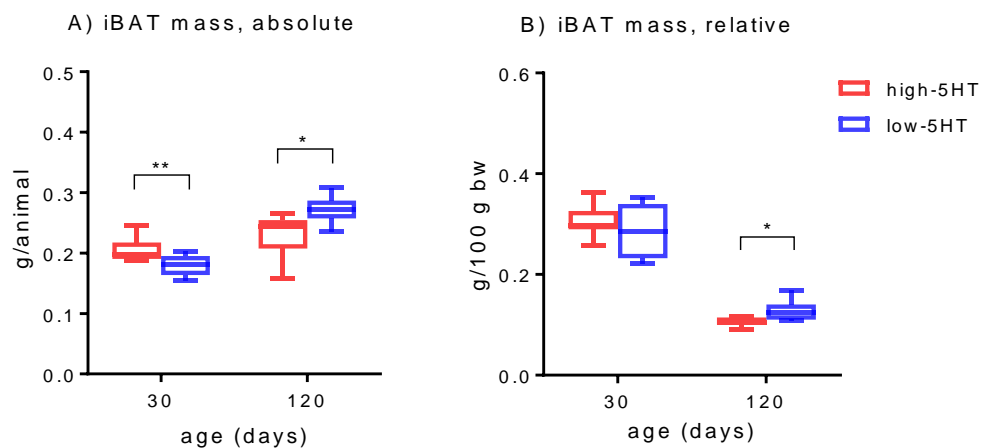


Figure S1. Mass of interscapular brown adipose tissue (iBAT) in female animals from high-5HT and low-5HT sublines housed at an ambient temperature of 22°C, expressed as weight per animal (A) or weight per body mass (B). Data are presented as median, interquartile range and min to max; n = 6-9/group; *p<0.05, **p<0.01, p-values obtained by t-test.

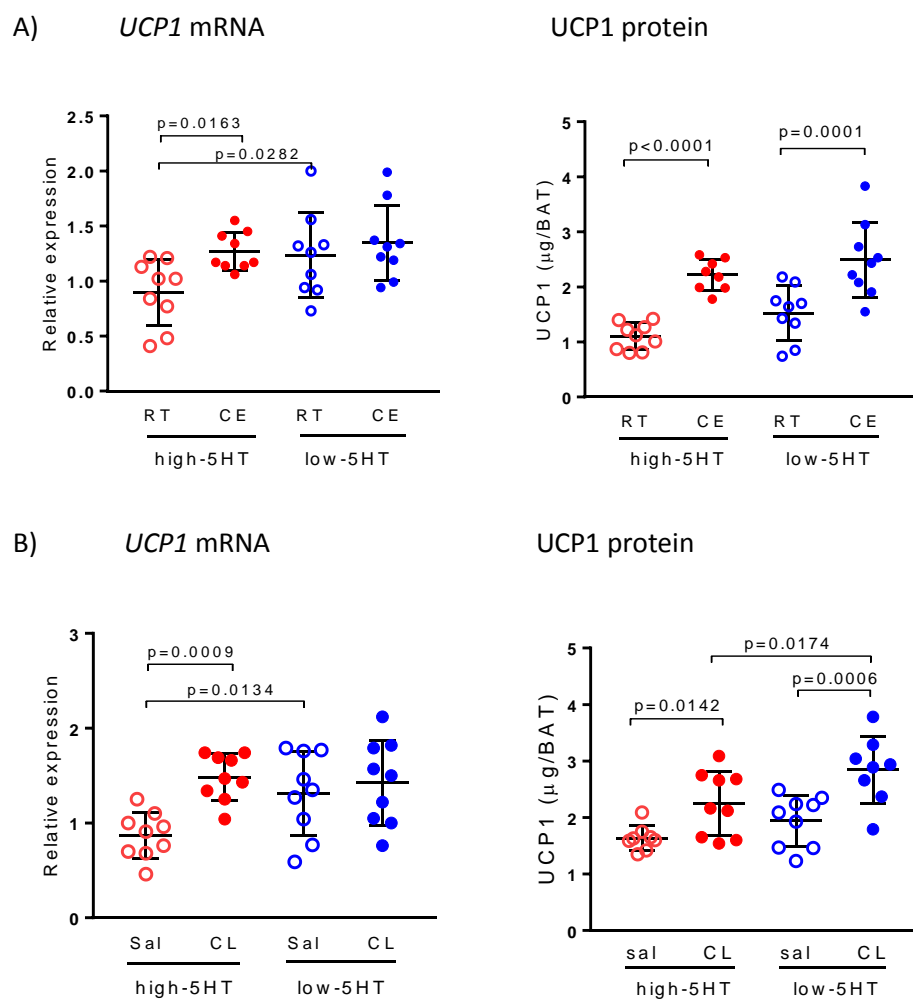


Figure S2. UCP1 protein and mRNA levels in BAT of high-5HT and low-5HT animals after **A)** cold exposure and **B)** CL316,214 treatment. Same data as shown in Figures 6 and 8 (cold exposure) and Figures 9 and 10 (CL treatment).