

Supporting Information

Vine-twining Inclusion Behavior of Amylose Towards Hydrophobic Polyester, Poly(β -propiolactone), in Glucan Phosphorylase-catalyzed Enzymatic Polymerization

Masa-aki Iwamoto^a and Jun-ichi Kadokawa^{a,*}

^a Graduate School of Science and Engineering, Kagoshima University, 1-21-40 Korimoto, Kagoshima 890-0065, Japan

*E-mail : kadokawa@eng.kagoshima-u.ac.jp ; Tel.: +81-99-285-7743

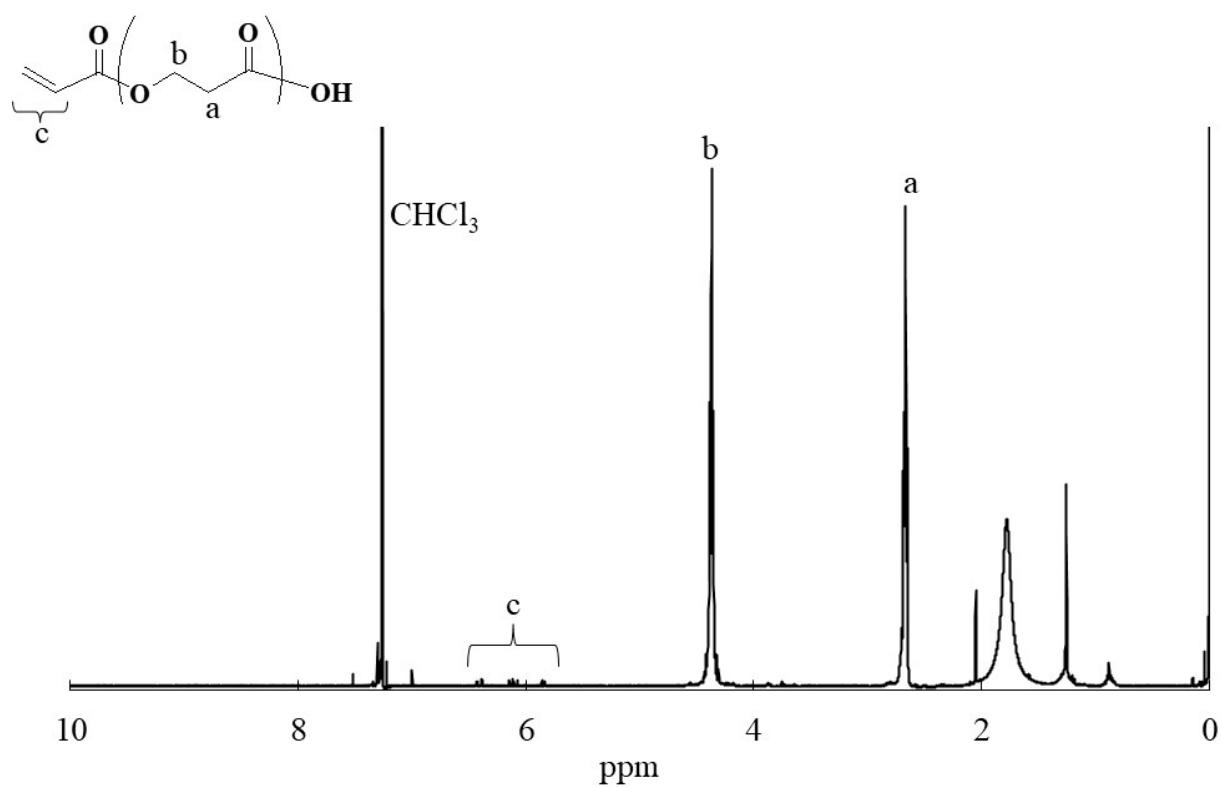


Figure S1. ^1H NMR spectrum of poly(β -propiolactone) (PPL) in CDCl_3 .