

Supplementary Materials

COX-2 (72 kDa) in Figure 1

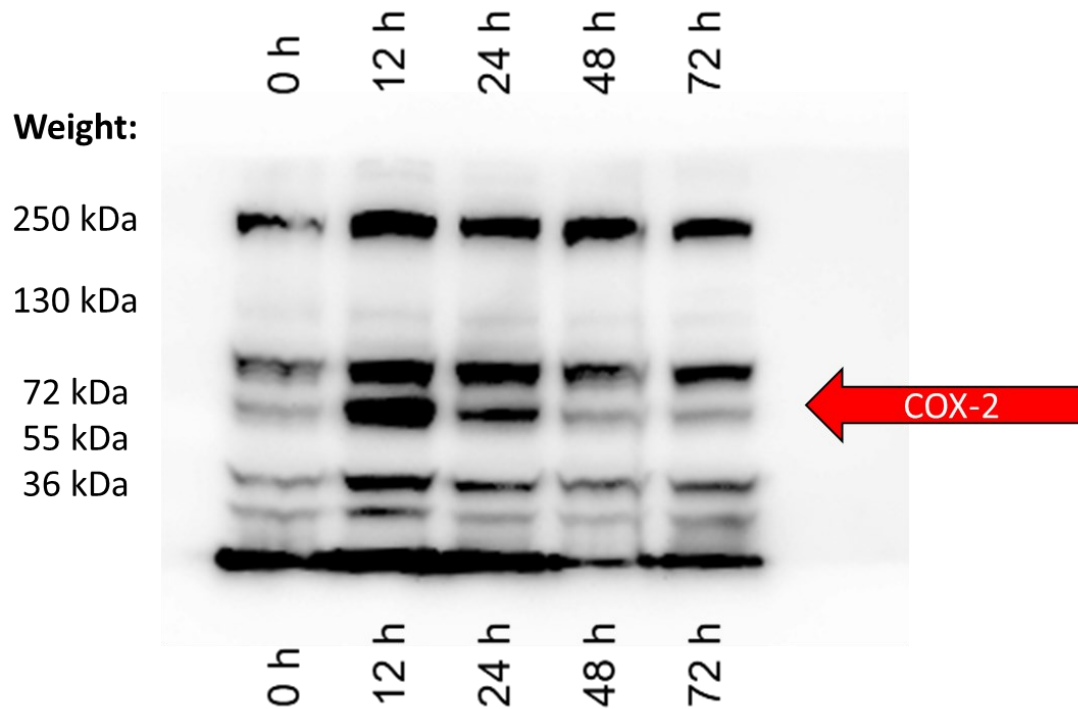


Figure S1. Original Western blots of proteins from human 3D EpiIntestinal tissue showing COX-2 at molecular weight of 72 kDa. Red arrow indicates bands shown in Figure 1B.

GAPDH (36 kDa) in Figure 1

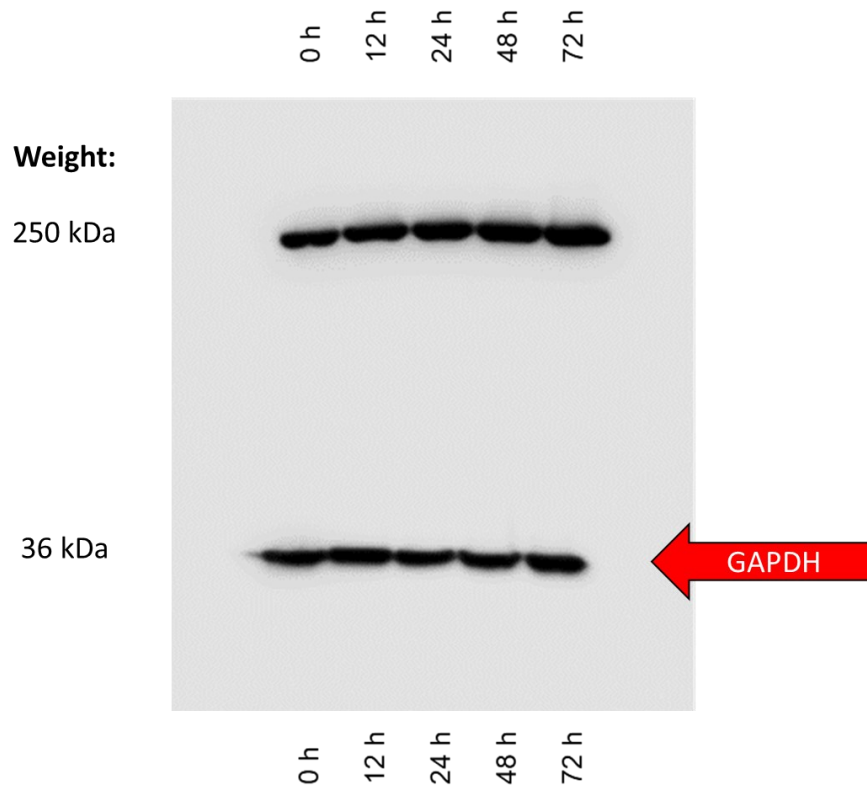


Figure S2. Original Western blots of proteins from human 3D EpiIntestinal tissue showing GAPDH at molecular weight of 36 kDa. Red arrow indicates bands shown in Figure 1B.