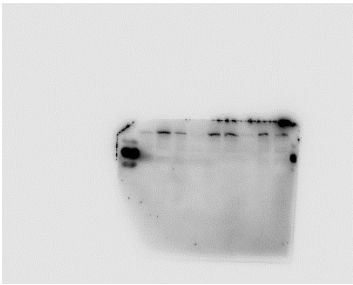


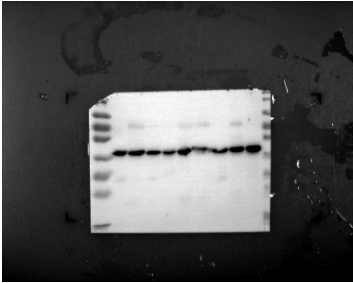
The data from top to bottom in the table corresponds to the image from left to right.

Figure S1.

The Western blot results of NLRP3.

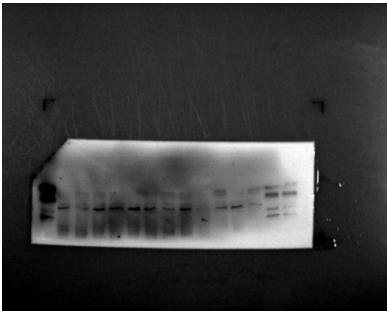


(NLRP3)

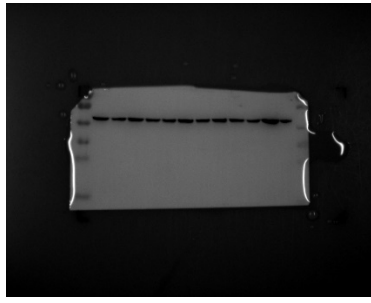


(actin)

NLRP3	actin	ratio	Group
31291	82434	0.379589	SHAM
57909	96433	0.60051	OIL
39561	67965	0.582079	NBP
30454	60578	0.502724	SHAM
55106	94028	0.586059	OIL
57804	96498	0.599018 (An unsuccessful detection)	NBP
35449	72790	0.487004	SHAM
53276	99016	0.538054	OIL
58307	126130	0.462277	NBP



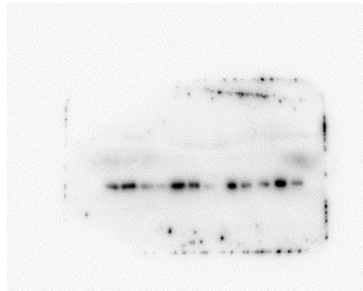
(NLRP3)



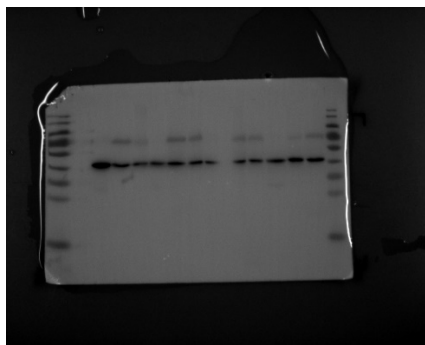
(β-actin)

NLRP3	actin	ratio	Group
32432	42598	0.76135	OIL
28506	39648	0.718977	OIL
37931	49481	0.766577	OIL
50738	39306	1.290846	OIL
45475	41149	1.10513	OIL
39750	50628	0.785139	OIL
30616	41929	0.730187	NBP
32391	49781	0.65067	NBP
22964	44536	0.515628	NBP
32066	42334	0.757453	NBP
36231	78563	0.461171	NBP
26267	40747	0.644636	NBP

The Western blot results of ASC.



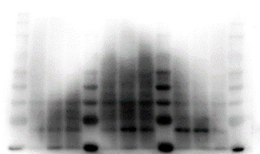
(ASC)



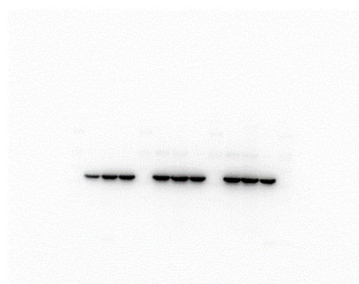
(β-actin)

ASC	β-actin	ratio	group
60563	99346	0.609617	SHAM
94195	64558	1.459076	OIL

49048	54315	0.903029	NBP
31026	57275	0.541702	SHAM
104141	66760	1.559931	OIL
73824	56991	1.295362	NBP
29503	37449	0.787818	SHAM
82181	42525	1.932534	OIL
55189	51223	1.077426	NBP
52401	59945	0.874151	SHAM
104075	65802	1.581639	OIL
51679	65632	0.787406	NBP



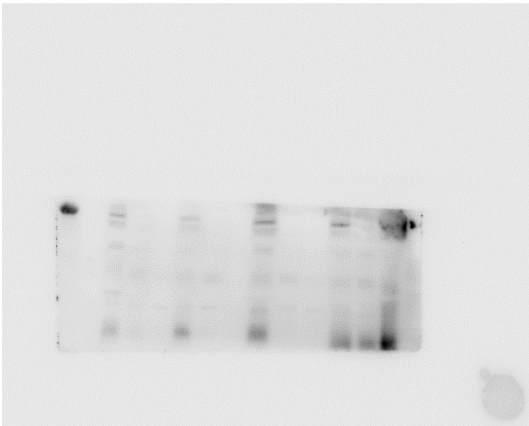
(Photographs of ASC. We used the middle three bands as a schematic diagram, so there was no statistical analysis.)



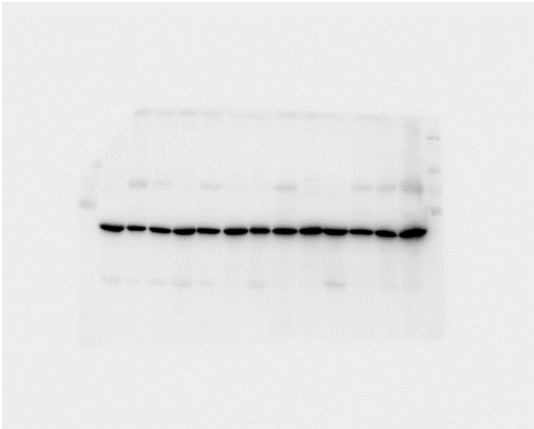
(β -actin)

Figure S2

The Western blot results of caspase-1.

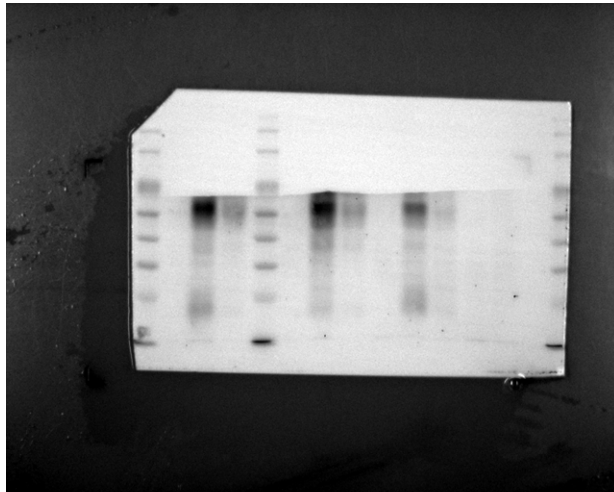


(caspase-1 and cleaved caspase-1)

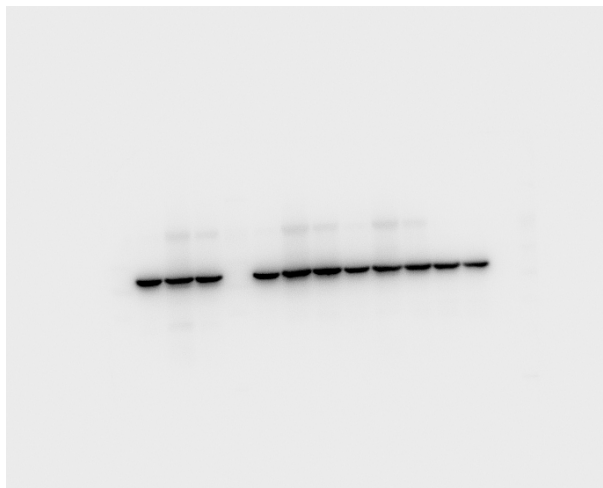


(β-actin)

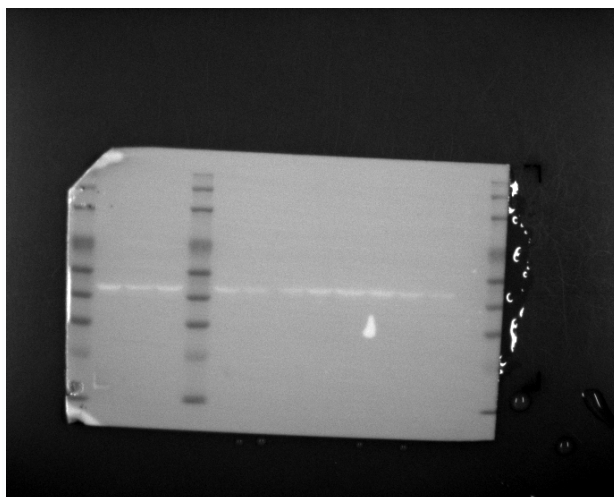
CASP1	β-actin	Ratio1	Group
15263	97499	0.156545	SHAM
27013	70225	0.384664	OIL
18872	77812	0.242533	NBP
16835	89528	0.188042	SHAM
25010	88034	0.284095	OIL
18696	108294	0.172641	NBP
17788	85985	0.206873	SHAM
39385	112325	0.350634	OIL
18653	93816	0.198825	NBP
17524	115658	0.151516	SHAM
34517	103691	0.332883	OIL
26554	102721	0.258506	NBP
68801	157540	0.436721	OIL



(Photographs of caspase-1 and cleaved caspase-1. We used the left three bands as a schematic diagram, so there was no statistical analysis.)



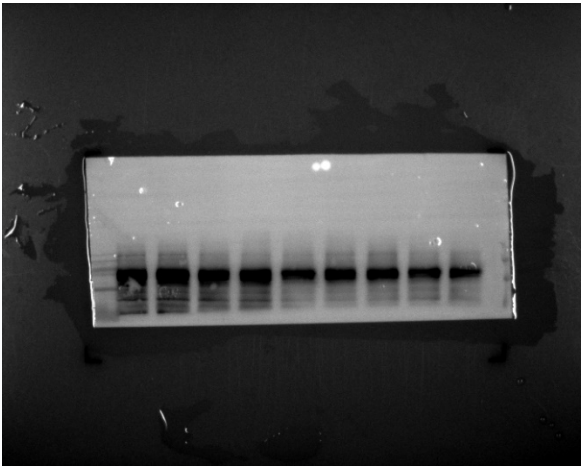
(β -actin)



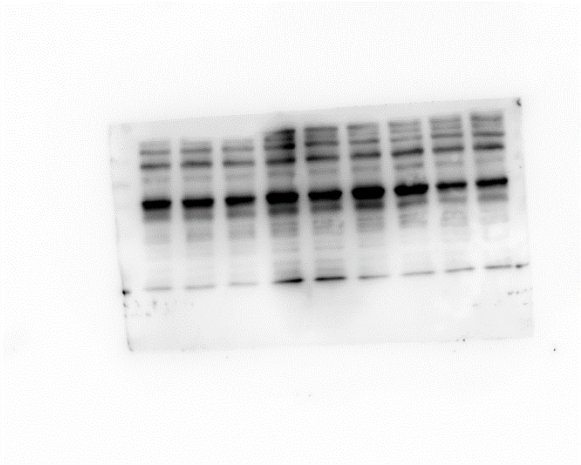
(Bright field images)

Figure S3

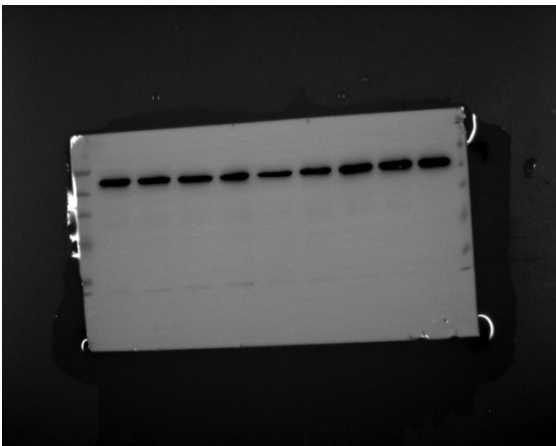
The Western blot results of NLRP3 and ASC from BV2. The first time.



(NLRP3)



(ASC)



(β -actin)

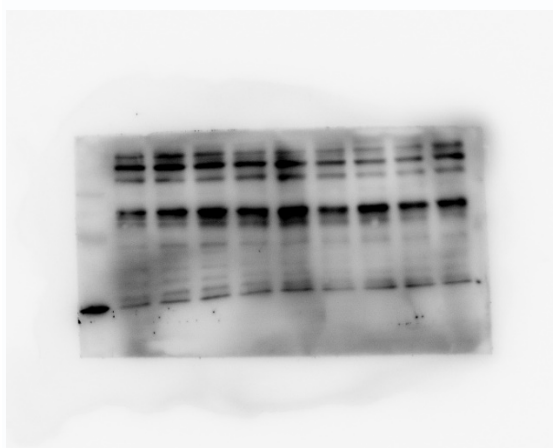
NLRP3	ASC	β -actin	Ratio of NLRP3	Ratio of ASC	Group
211317	181009	189383	1.115818	0.955783	SHAM
241657	187023	198921	1.214839	0.940187	SHAM
217226	182478	196801	1.103785	0.927221	SHAM

228660	226170	186139	1.228437	1.21506	DMSO
203886	215707	158058	1.289944	1.364733	DMSO
207295	229780	176764	1.172722	1.299925	DMSO
201670	201169	227495	0.886481	0.884279	NBP
189832	153177	234792	0.808511	0.652394	NBP
174735	157748	223973	0.780161	0.704317	NBP

The Western blot results of NLRP3 and ASC from BV2. The second time.



(NLRP3)



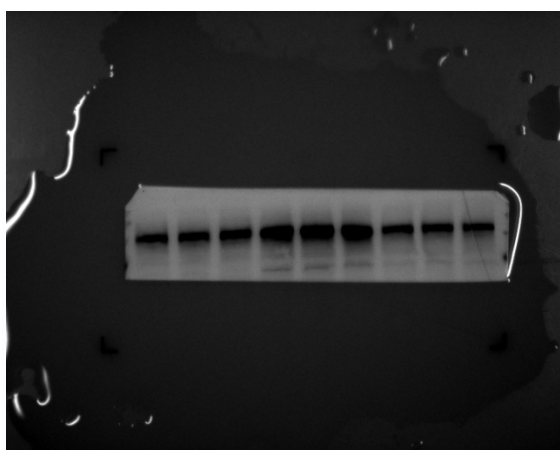
(ASC)



(β-actin)

NLRP3	ASC	β-actin	Ratio of NLRP3	Ratio of ASC	Group
181653	131781	190873	0.951696	0.690412	SHAM
215205	155746	191010	1.126669	0.815381	SHAM
232245	167881	173485	1.338704	0.967697	SHAM
235388	167962	138232	1.702847	1.215073	DMSO
239363	179275	138330	1.730377	1.295995	DMSO
239205	133934	143713	1.664463	0.931955	DMSO
247638	157818	188026	1.317041	0.839341	NBP
214068	136283	171503	1.248188	0.794639	NBP
185876	147712	152813	1.216362	0.966619	NBP

The Western blot results of NLRP3 and ASC from BV2. The third time.



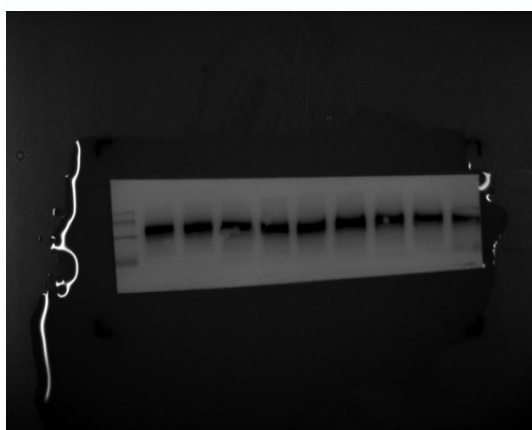
(NLRP3)



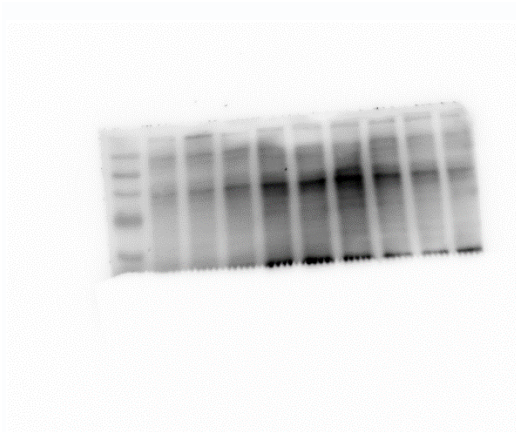
(β -actin)

NLRP3	β -actin	Ratio of NLRP3	Group
186584	178550	1.044996	SHAM
196879	163638	1.203137	SHAM
205608	163834	1.254978	SHAM
247613	177074	1.398359	DMSO
258660	187270	1.381214	DMSO
246722	223382	1.104485	DMSO
187945	178370	1.053681	NBP
190528	191423	0.995324	NBP
180700	193246	0.935078	NBP

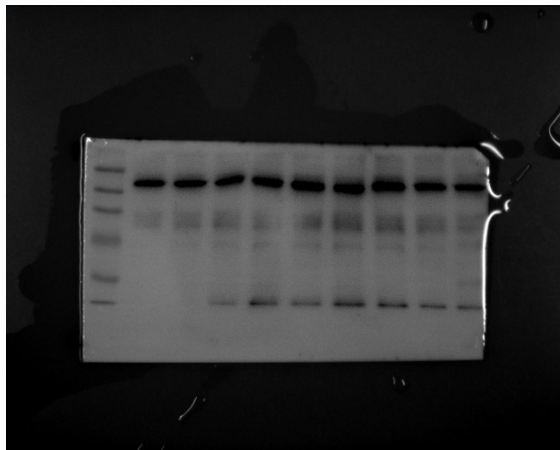
The Western blot results of NLRP3 and ASC from BV2. The fourth time.



(NLRP3)



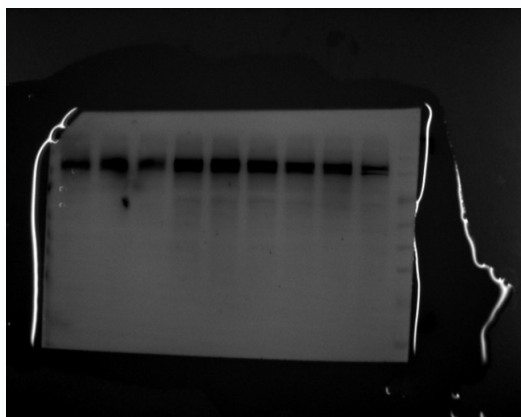
(ASC)



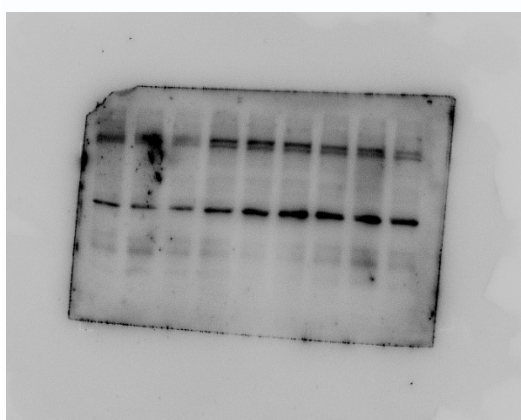
(actin)

NLRP3	ASC	β -actin	Ratio of NLRP3	Ratio of ASC	Group
202719	69993	163749	1.237986	0.427441	SHAM
213827	88350	181037	1.181123	0.488022	SHAM
197053	111148	179017	1.10075	0.62088	SHAM
207441	148370	197098	1.052476	0.752773	DMSO
219704	158517	220379	0.996937	0.719293	DMSO
234634	180038	220406	1.064554	0.816847	DMSO
201426	146583	227133	0.88682	0.645362	NBP
192567	105058	192811	0.998735	0.544876	NBP
153373	78878	173095	0.886063	0.455692	NBP

The WHOLE blot of NLRP3



(NLRP3)



(β -actin)

NLRP3	β -actin	Ratio of NLRP3	Group
201654	195023	1.034001	SHAM
227505	193667	1.174723	SHAM
193979	174245	1.113254	SHAM
239596	200142	1.19713	DMSO
247479	211090	1.172386	DMSO
238710	235006	1.015761	DMSO
219569	225074	0.975541	NBP
218933	235514	0.929597	NBP
172273	214474	0.803235	NBP