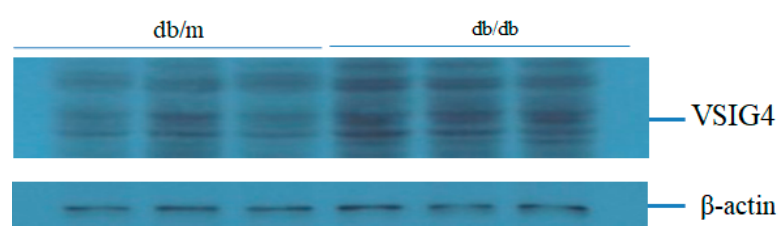


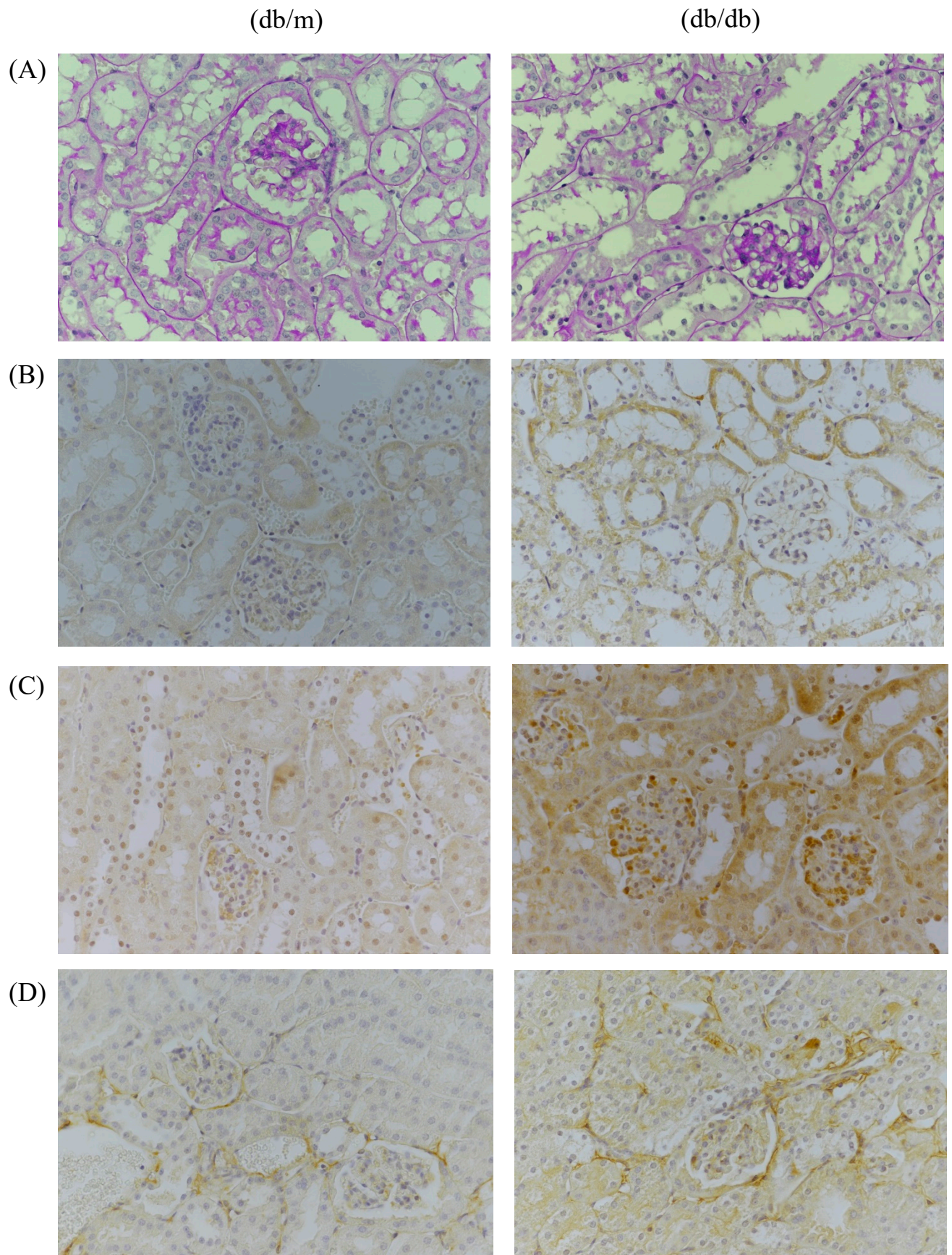
Supplementary Table S1. Primer sequences for quantitative RT-PCR.

Target gene	Primer sequence (5' to 3')
VSIG4, forward	TCCCTGGCTTCCTTTCTTCT
VSIG4, reverse	CCA AAC CCA GGA TTT CTC AA
TGF $\beta$ , forward	AGCCCGAAGCGGACTACTAT
TGF $\beta$ , reverse	CTGTGTGAGATGTCTTTGGTTTTTC
PAI-1, forward	TCCTCATCCTGCCTAAGTTCTC
PAI-1, reverse	GTGCCGCTCTCGTTTACCTC
Col 4, forward	GCTCTGGCTGTGGAAAATGT
Col 4, reverse	CTTGCATCCCGGGAAATC
$\beta$ -actin, forward	GGACTCCTATGTGGGTGACG
$\beta$ -actin, reverse	CTTCTCCATGTCGTCCCAGT

Supplementary Figure S1. Representative immunohistochemical staining for VSIG4.



Supplementary Figure S2. Representative immunohistochemical staining. (A) PAS; (B) TGF- $\beta$ ; (C) PAI-1; (D) type IV collagen. Original magnification x 400. (E) Semiquantitative expression of each molecule \*  $P < 0.05$  vs. db/m.



(E)

