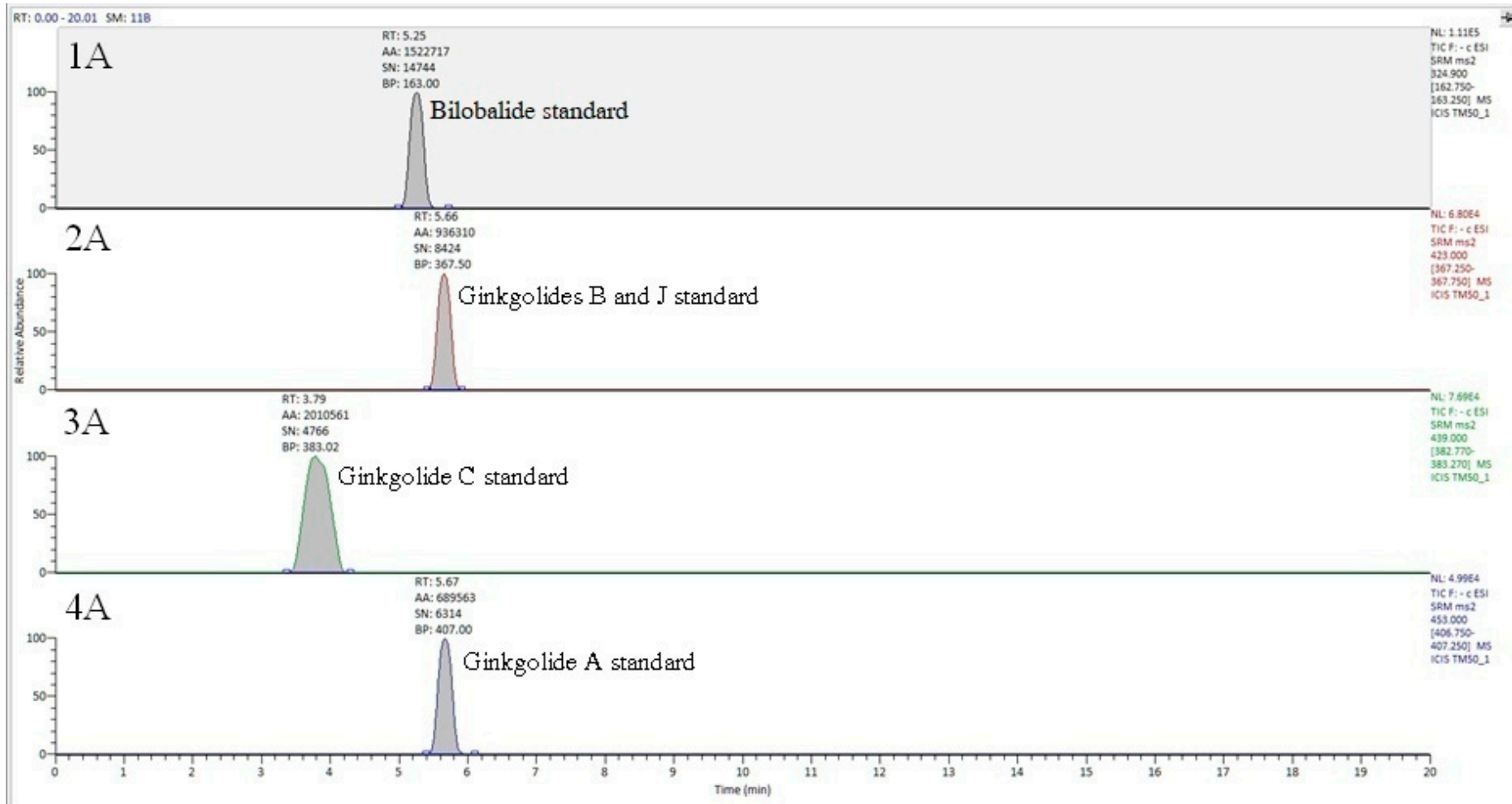


Figure S1. Chromatograms of flavonoids standards: Kaempferol (1A), Quercetin (2A), Isorhamnetin (3A), Rutin (4A) and of flavonoids in GBSE: Kaempferol (1B), Quercetin (2B), Isorhamnetin (3B), Rutin (4B).



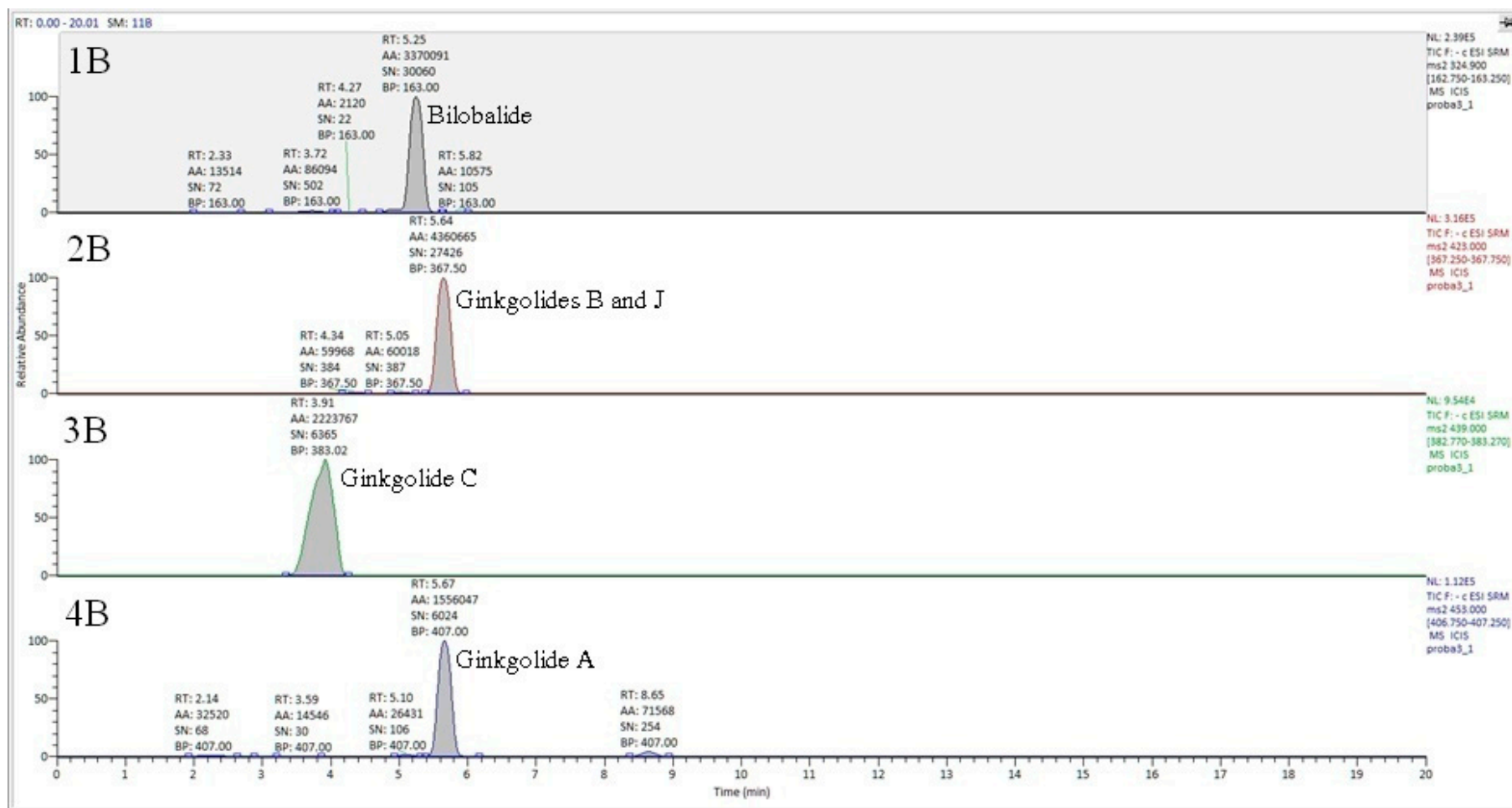
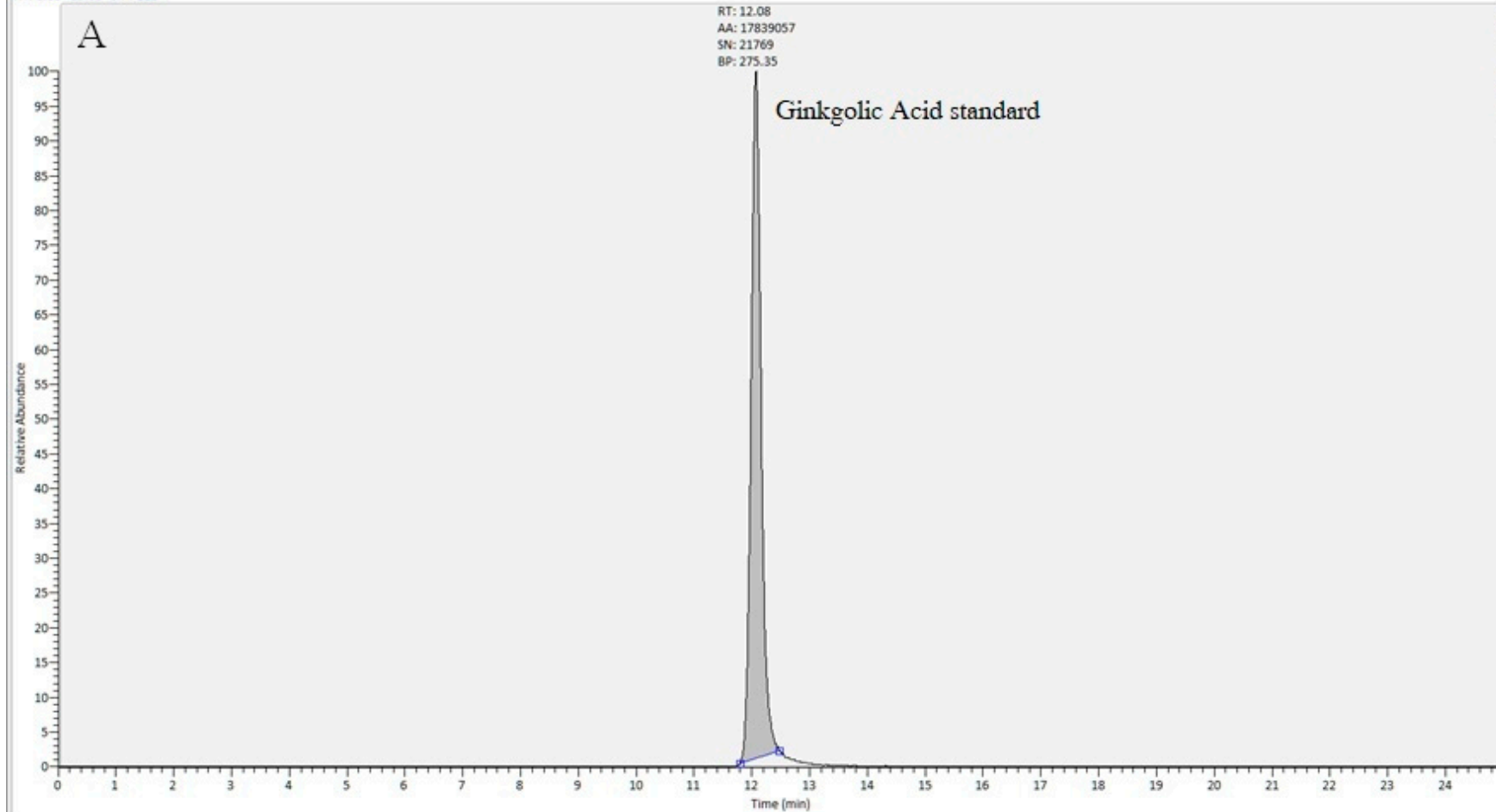


Figure S2. Chromatograms of terpenes standards: Bilobalide (1A), Ginkgolides B and J (2A), Ginkgolide C (3A), Ginkgolide A (4A) and of terpenes in GBSE: Bilobalide (1B), Ginkgolides B and J (2B), Ginkgolide C (3B), Ginkgolide A (4B).

RT: 0.00 - 25.00 SM: 118



NL:
1.49E6
TIC F: -p ESI
SRM ms2
319.200
[275.050-
275.550] MS
ICIS GA5_1

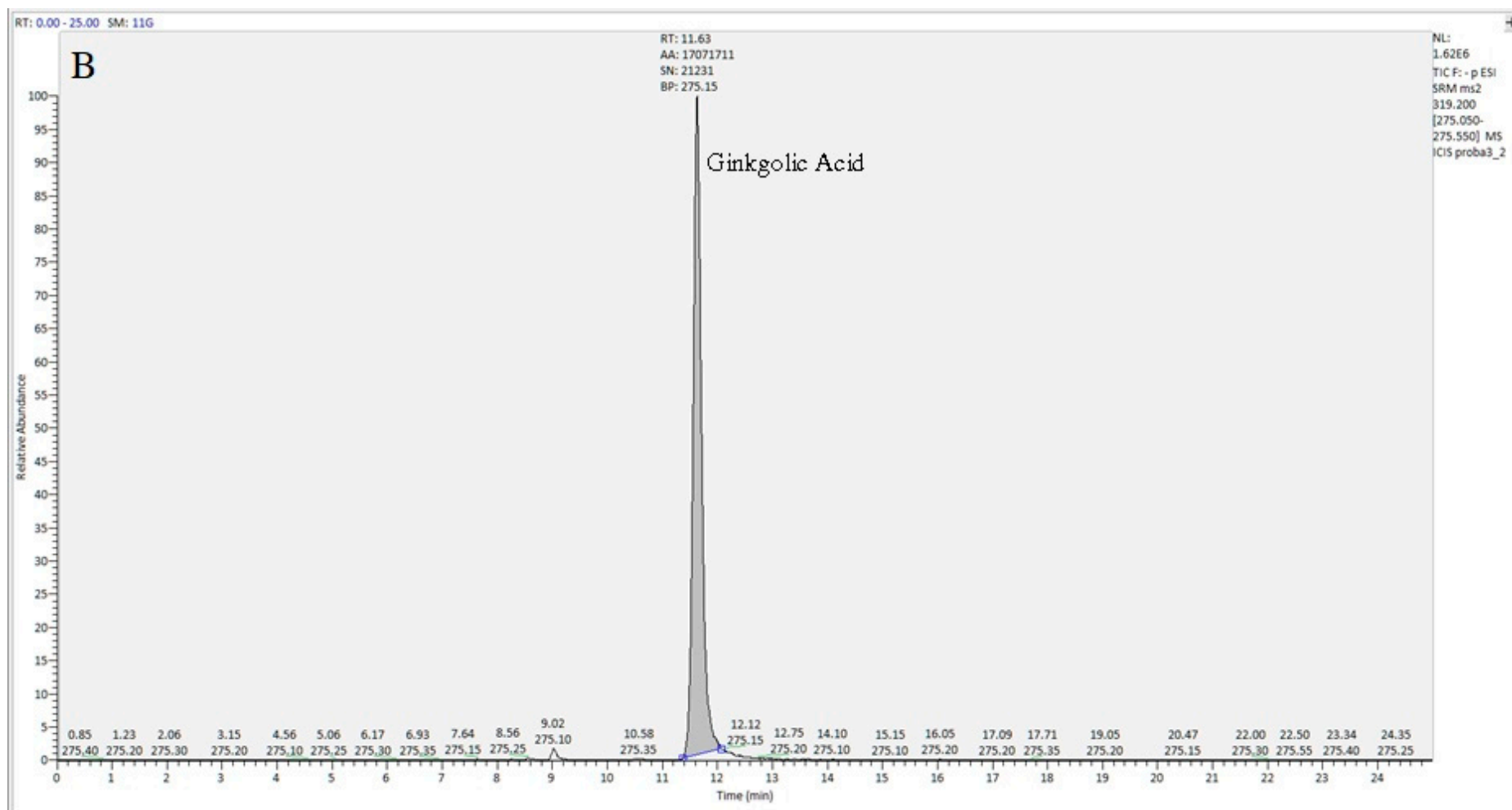


Figure S3. Chromatogram of Ginkgolic Acid standard (A) and of Ginkgolic Acid in GBSE (B).

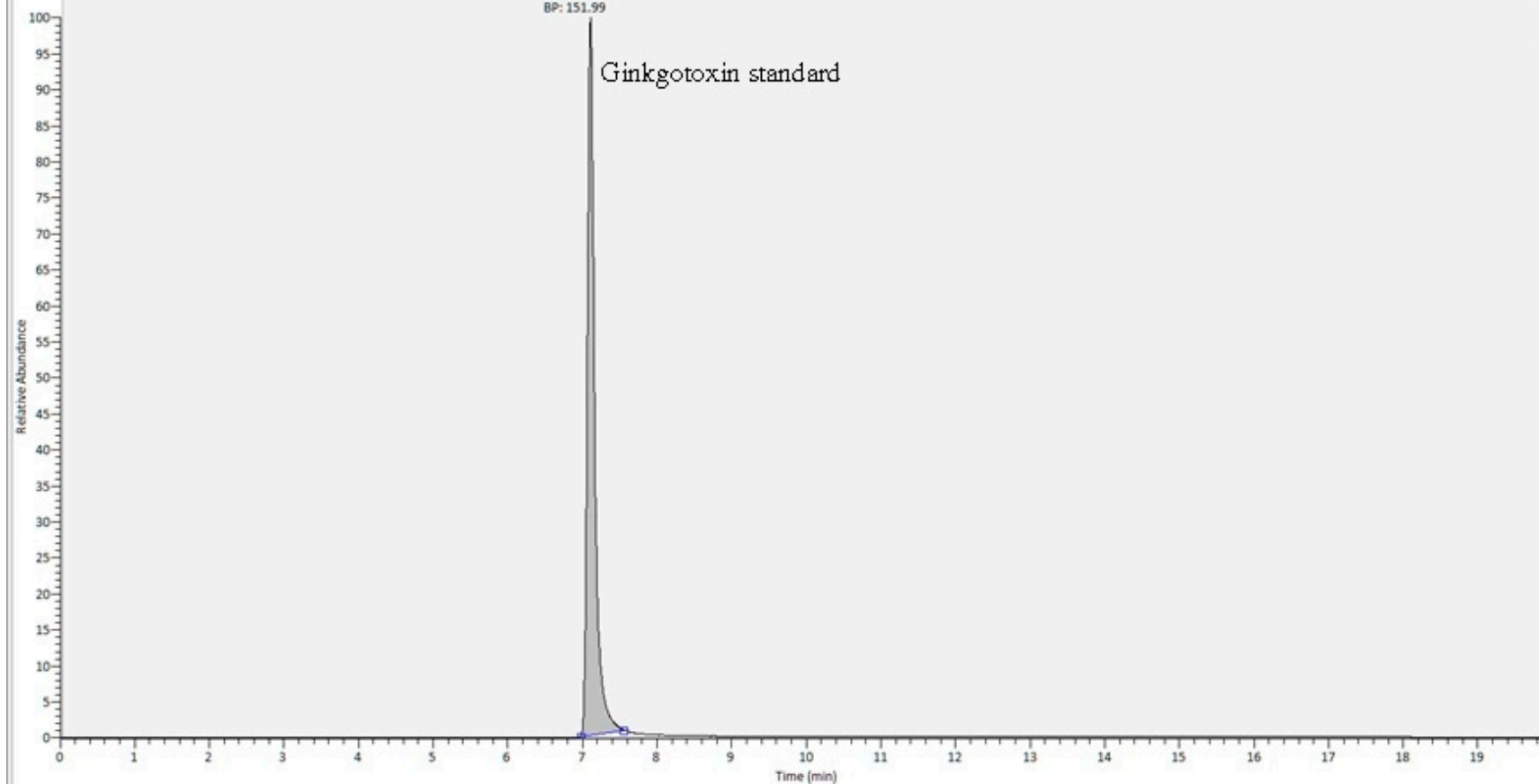
RT: 0.00 - 20.00 SM: 11B

A

RT: 7.11
AA: 1097313838
SN: 123716
BP: 151.99

Ginkgotoxin standard

NL:
1.62E8
TIC F: + p ESI
SRM ms2
183.970
[151.790-
152.290] MS
ICIS Gtox20_1



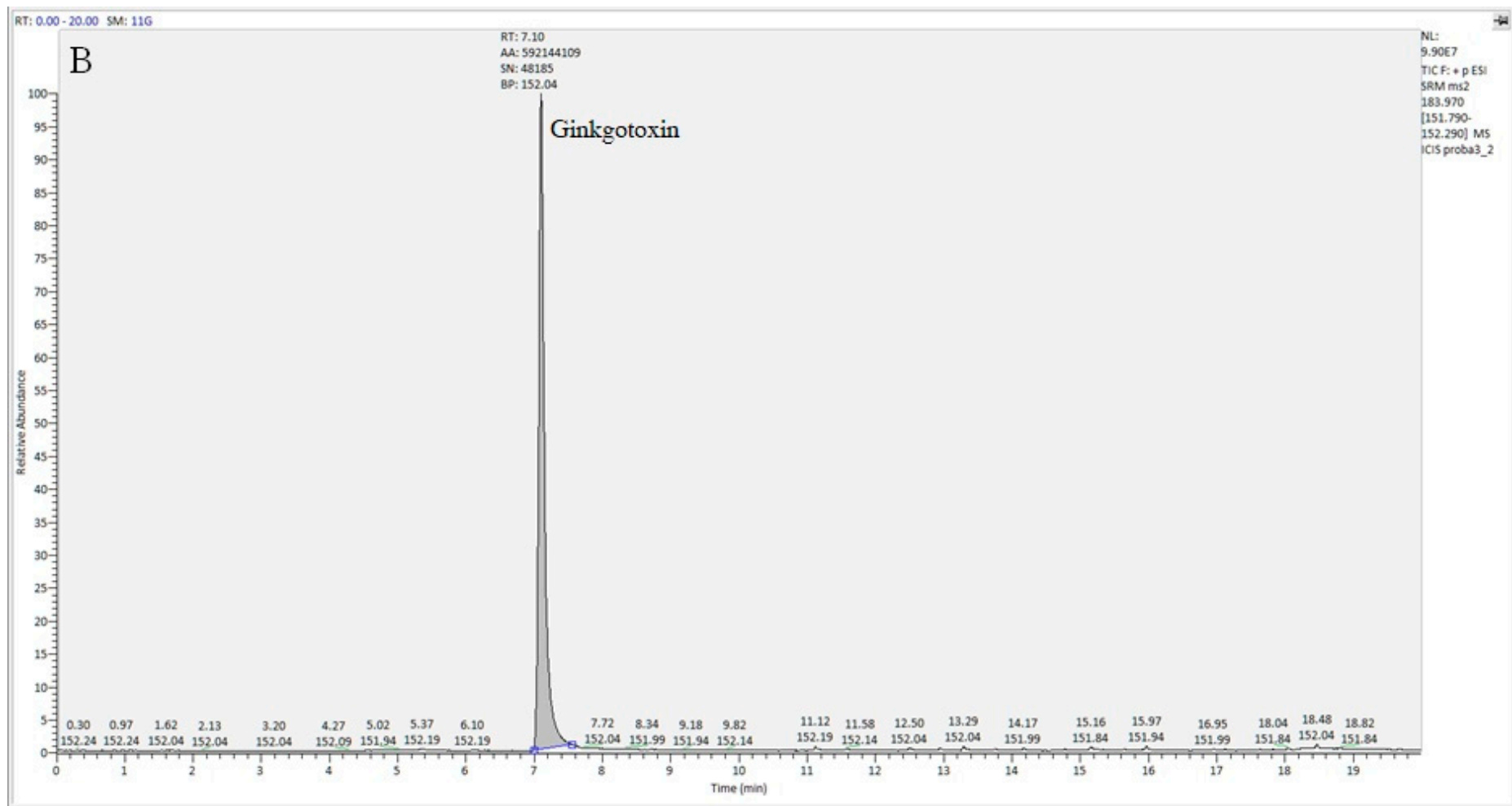


Figure S4. Chromatogram of Ginkgotoxin standard (A) and of Ginkgotoxin in GBSE (B).