

Supplementary Materials

5×10^4 RAW264.7 cells were treated with medium alone, 0.1% DMSO/0.001% ethanol (vehicle), LPS (0.1 $\mu\text{g/mL}$), LPS (0.1 $\mu\text{g/mL}$) plus IFN- γ (5U), or various doses of AC extracts (50, 100, 200, 400, 800 $\mu\text{g/mL}$) as indicated. Culture supernatants were collected after 24 h. The amounts of nitrite were measured by Griess assay. Data are expressed as mean of nitrite (μM) \pm SD of four independent experiments.

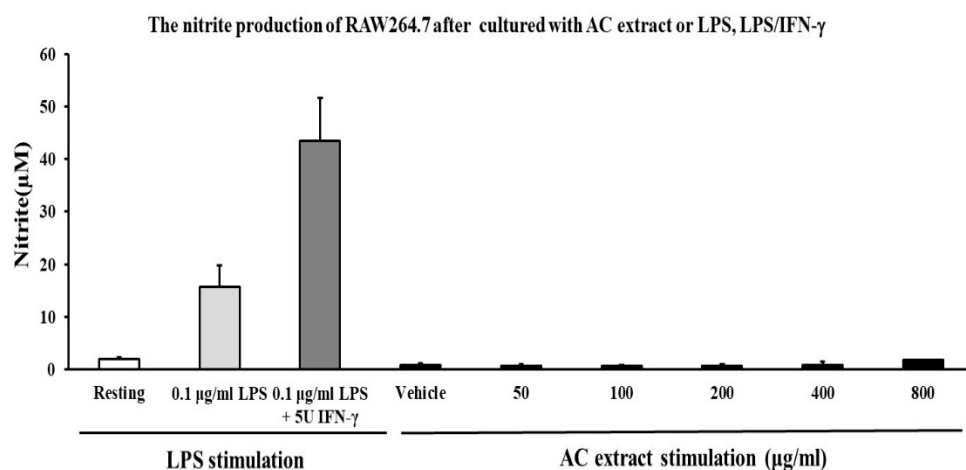


Figure S1. Addition of the AC extract alone did not activate macrophages.

5×10^4 RAW264.7 cells were treated with 0.1% DMSO/0.001% ethanol (vehicle) or various doses of AC extracts (50, 100, 200, 400, 800 $\mu\text{g/mL}$) as indicated. After 24 h incubation, the proliferation of RAW264.7 cells was measured by MTT assay. Data are expressed as mean of OD_{570 nm} \pm SD of four independent experiments.

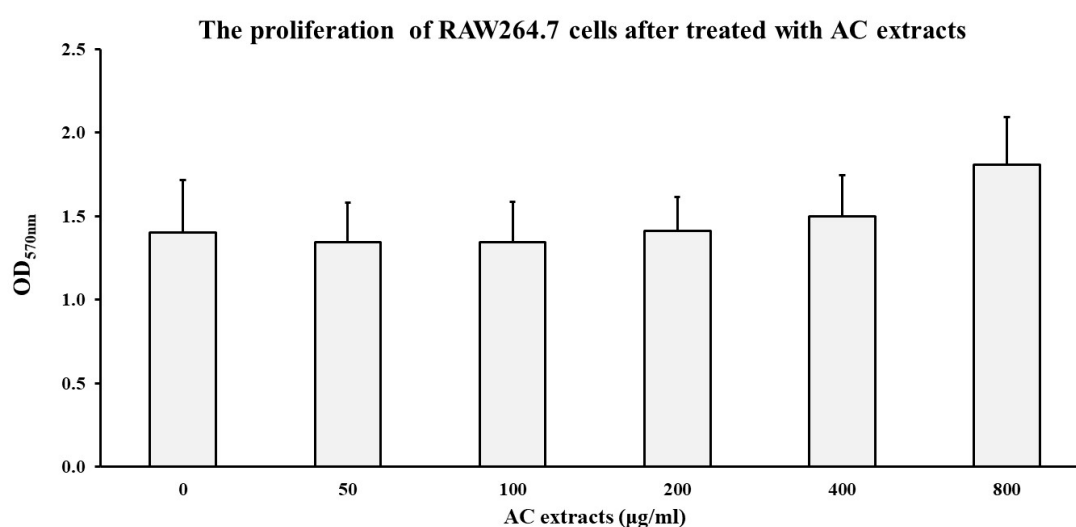


Figure S2. The effect of AC extracts on the proliferation of RAW 264.7 cell

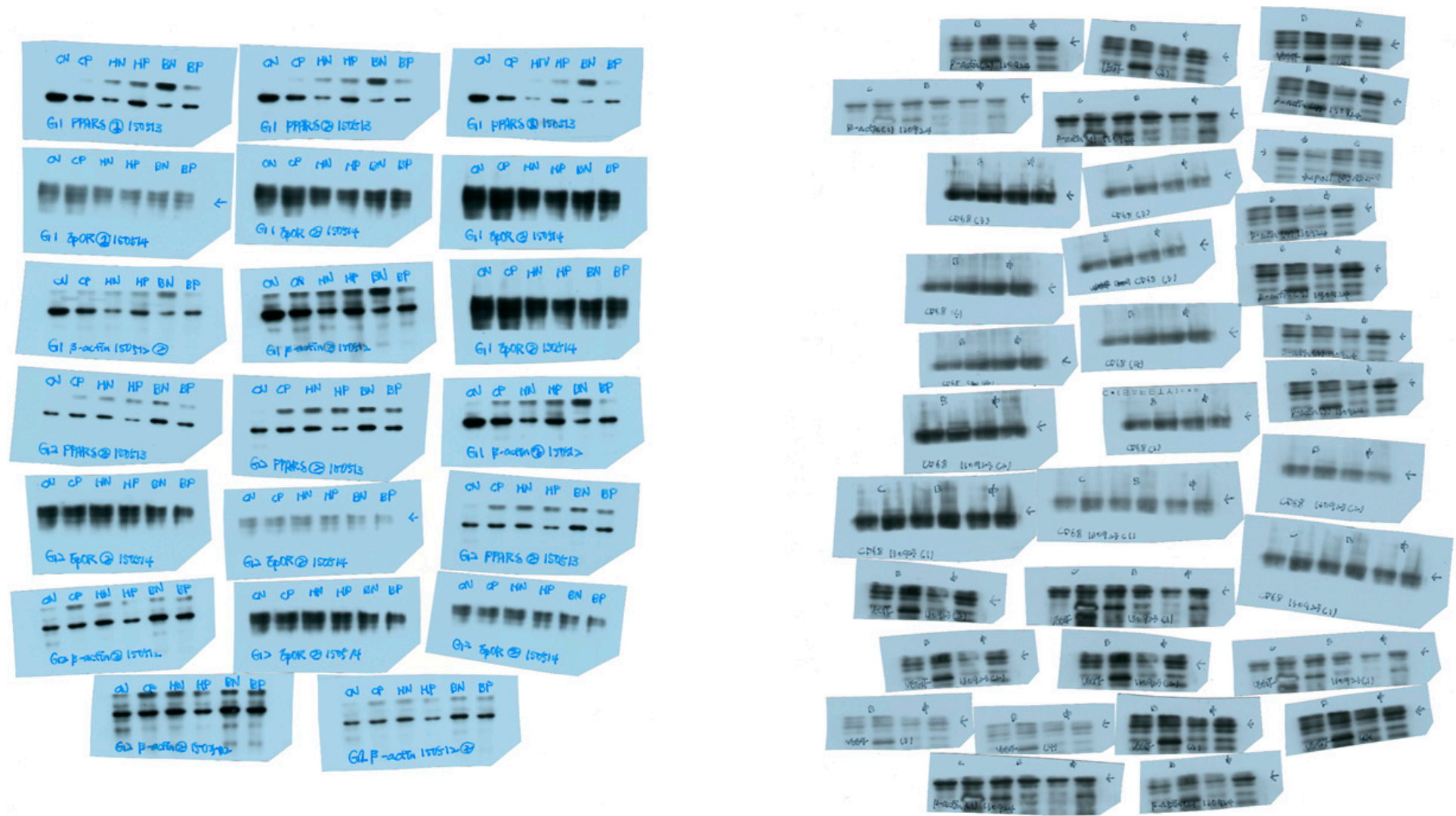


Figure S3. The original Western blot figures.