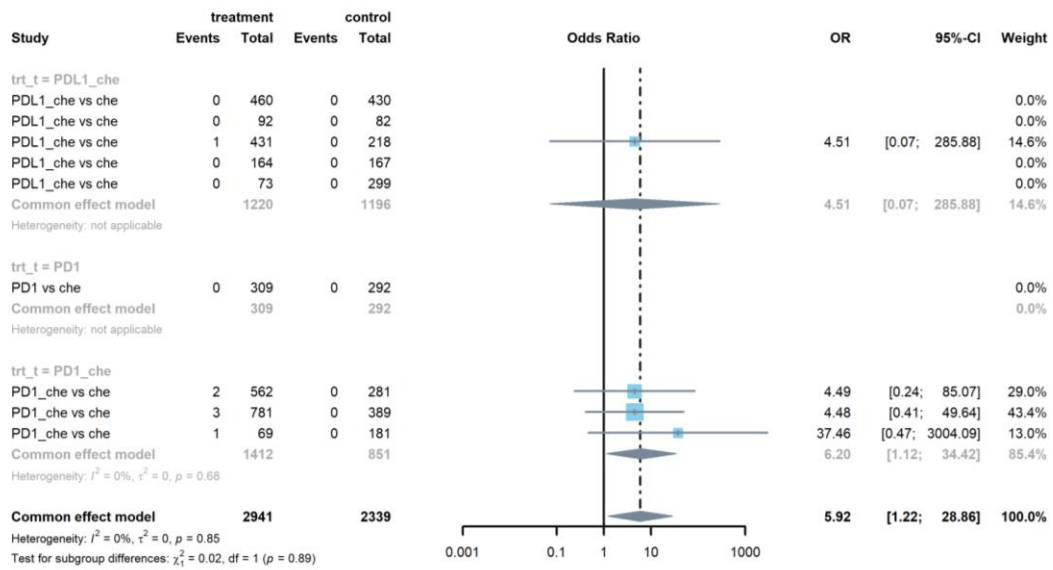
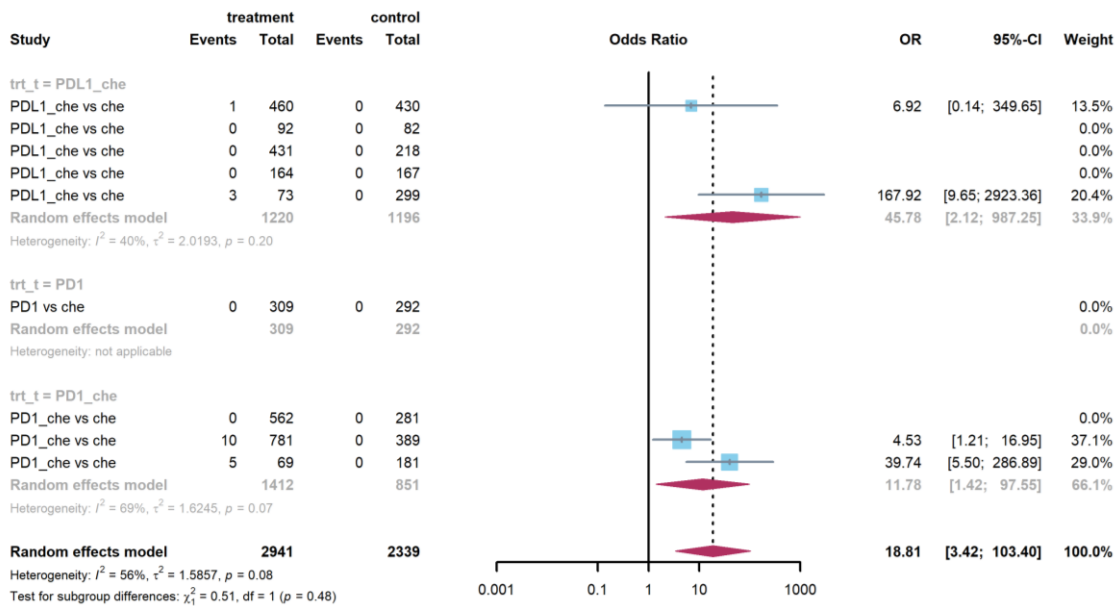


## Supplementary Material

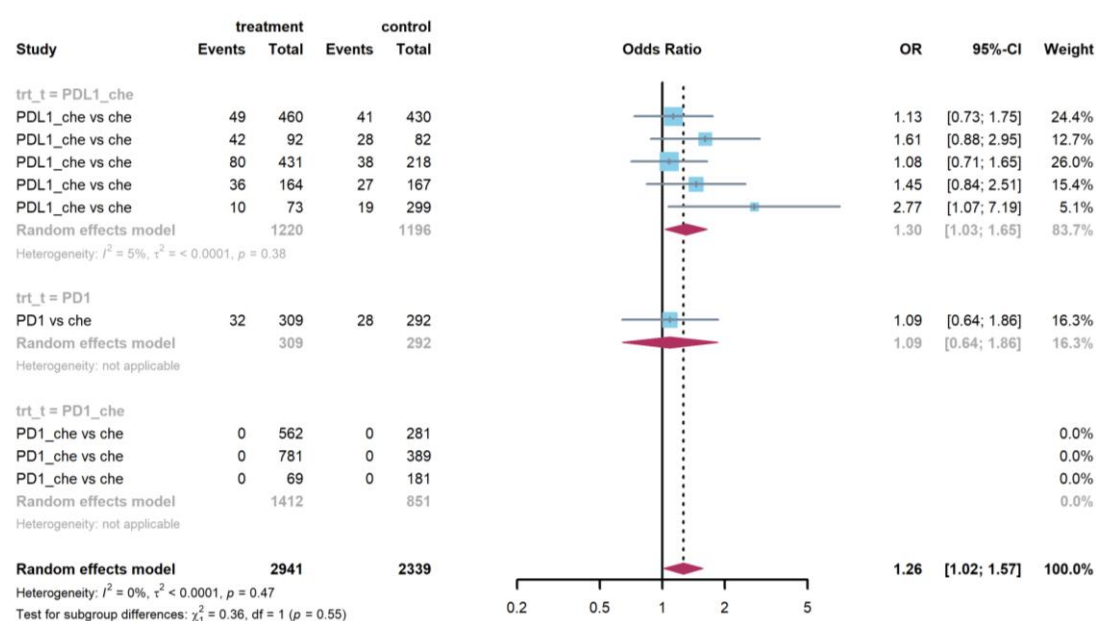
This supplementary file presents five forest plots illustrating the ORs of the serious hypothyroid, serious adrenal insufficiency, non-serious AST elevation, non-serious rash, and the non-serious fever, respectively, in patients treated with PD-1 or PD-L1 inhibitors versus the patients treated with chemotherapy. In particular, Figure S1 shows the forest plot of serious hypothyroid in patients treated with PD-1 or PD-L1 inhibitors versus chemotherapy; Figure S2 presents the forest plot of serious adrenal insufficiency in patients; Figure S3 displays the forest plot of non-severe AST elevation in patients; Figure S4 shows the forest plot of other rash in patients; and Figure S5 presents the forest plot of non-severe fever in patients.



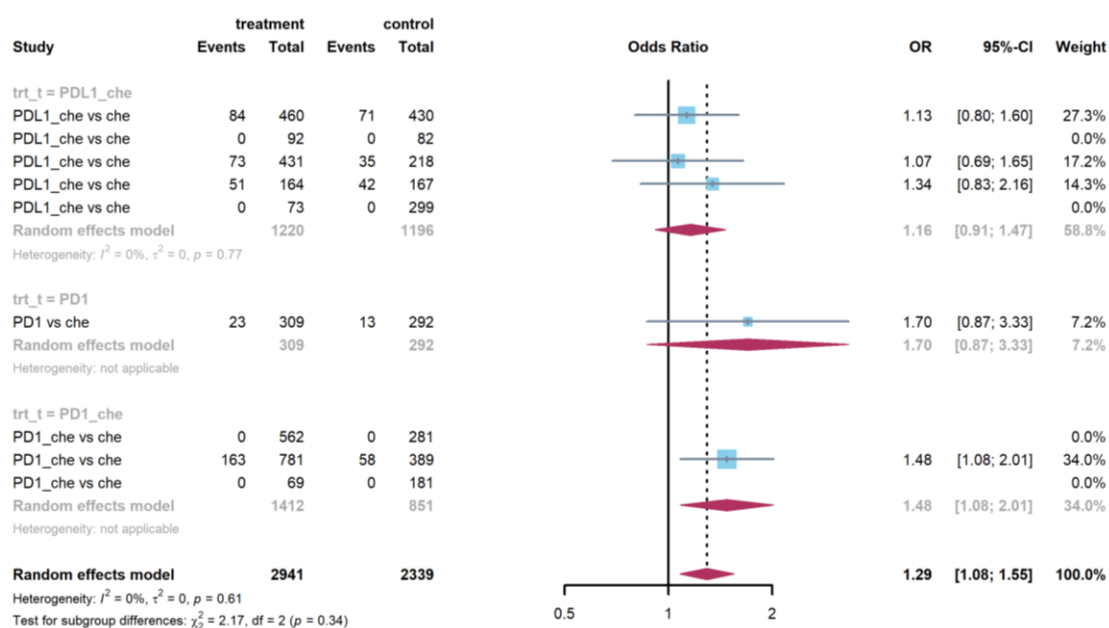
**Figure S1.** Forest plot of serious hypothyroidism in patients treated with PD-1 or PD-L1 inhibitors versus chemotherapy.



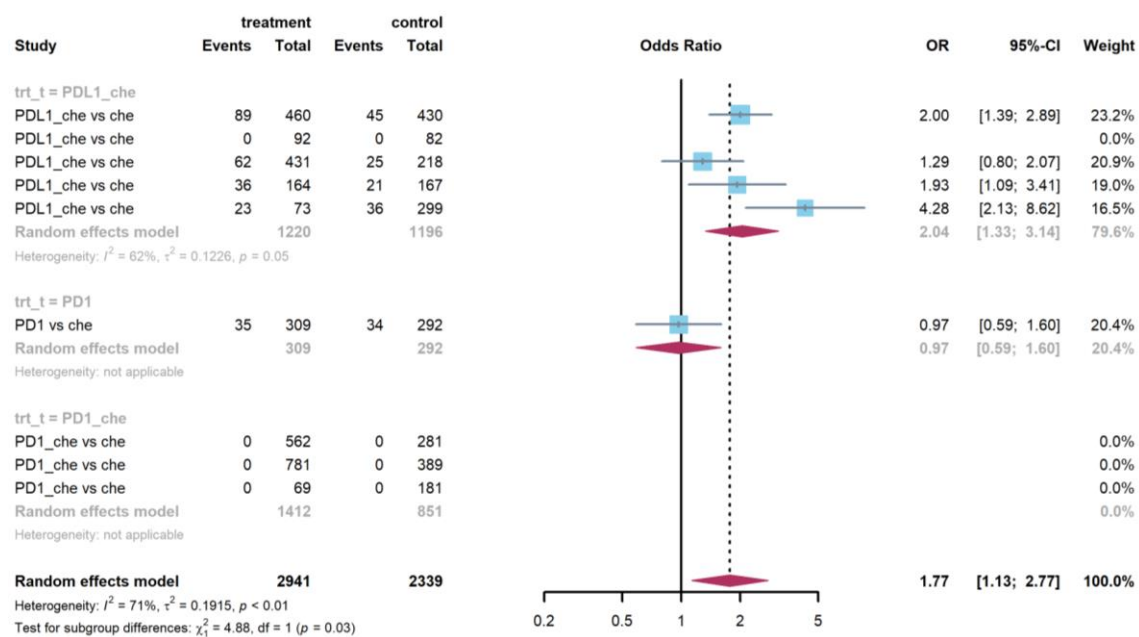
**Figure S2.** Forest plot of serious adrenal insufficiency in patients treated with PD-1 or PD-L1 inhibitors versus chemotherapy.



**Figure S3.** Forest plot of other AST elevation in patients treated with PD-1 or PD-L1 inhibitors versus chemotherapy.



**Figure S4.** Forest plot of other rashes in patients treated with PD-1 or PD-L1 inhibitors versus chemotherapy.



**Figure S5.** Forest plot of other fevers in patients treated with PD-1 or PD-L1 inhibitors versus chemotherapy.