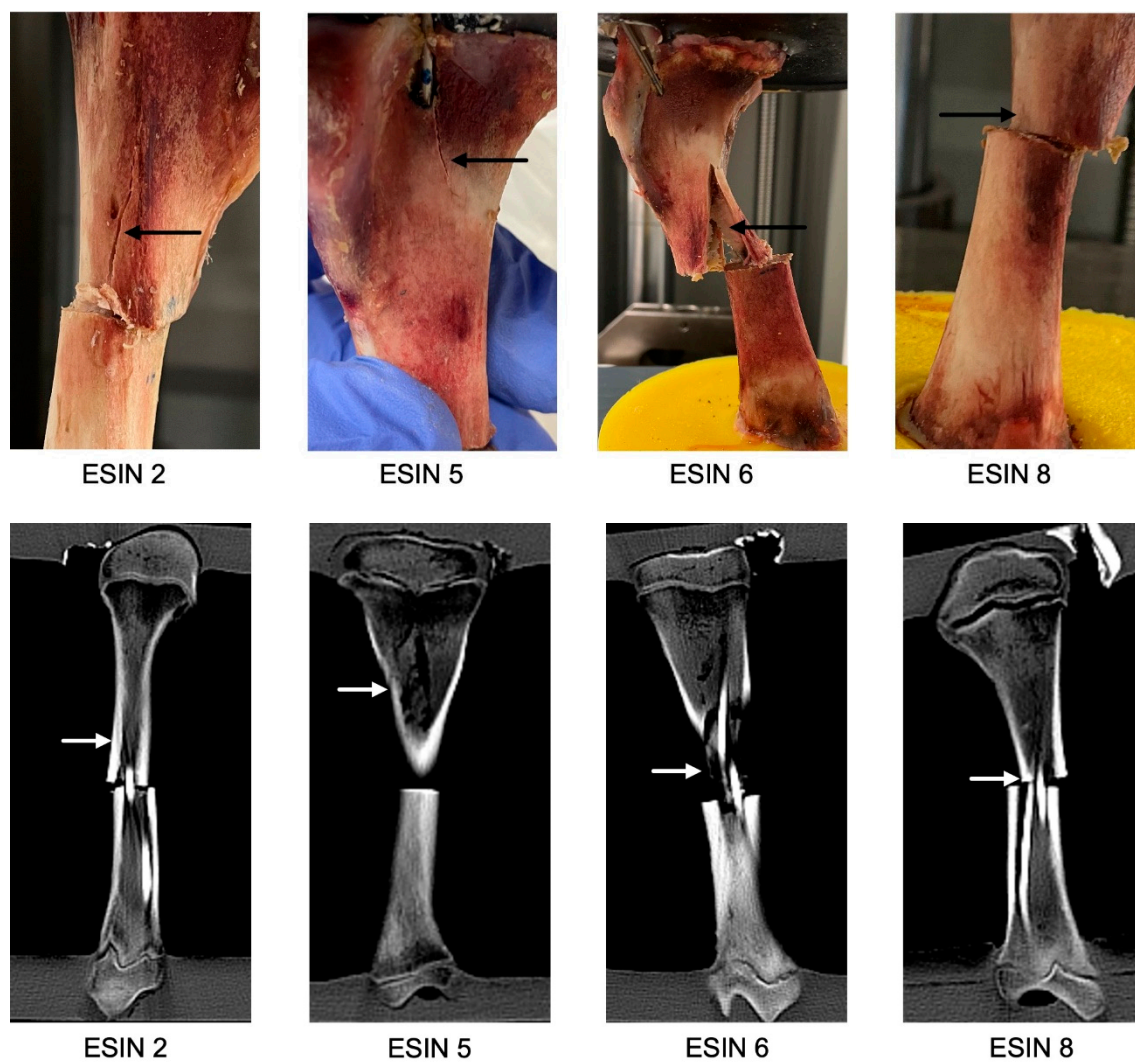
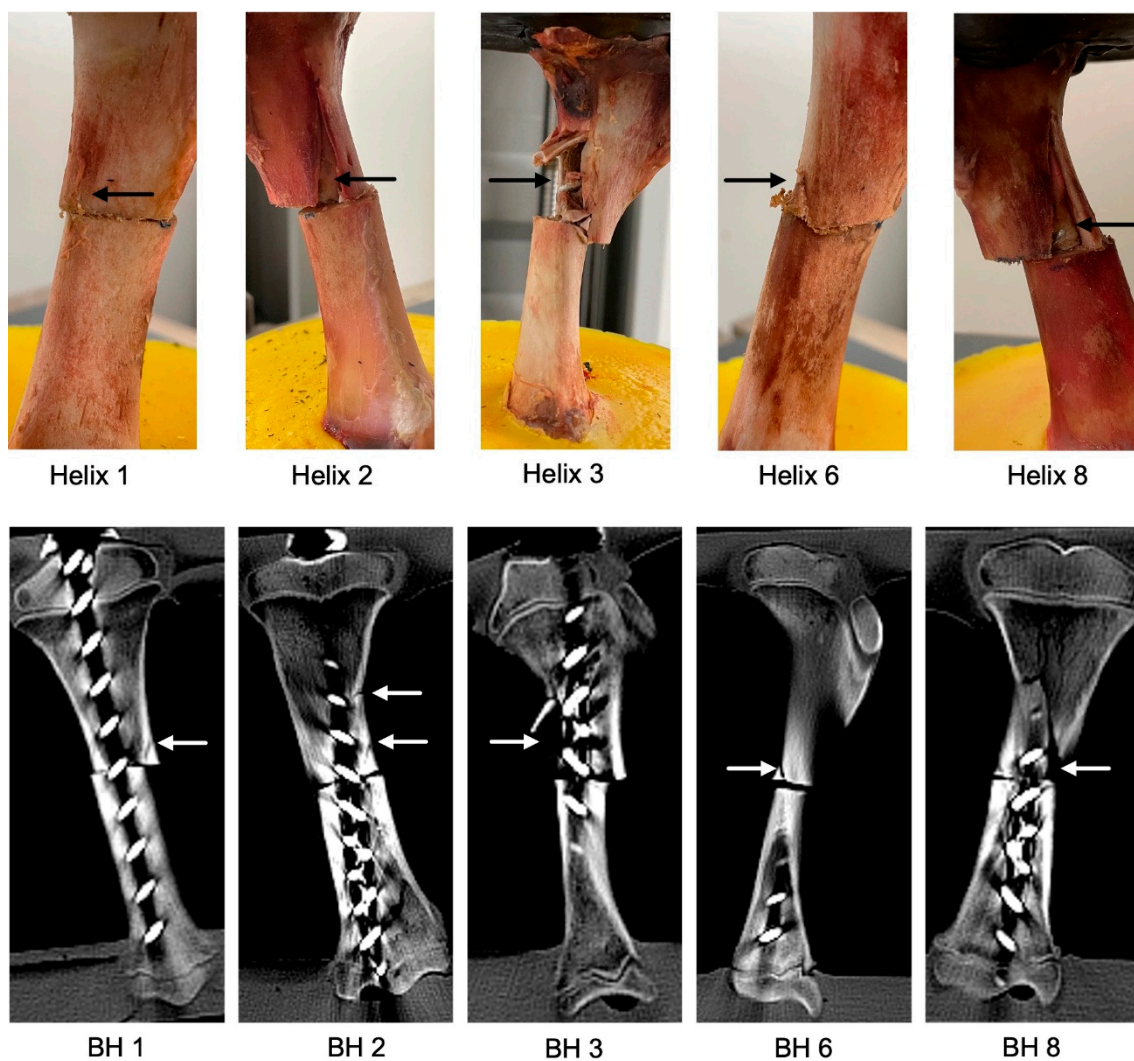


Supplementary material

Examples of fractures obtained after load-to-failure tests with ESIN and BoneHelix are shown in Figure S1 and Figure S2, respectively.



**Figure S1.** Images of specimens with ESIN implants after load to failure tests. Arrows indicate fractures.



**Figure S2.** Images of specimens with BoneHelix implants after load to failure tests. Arrows indicate fractures.