

Supplementary Materials

Comparison of Different Signal Peptides for the Efficient Secretion of the Sweet-Tasting Plant Protein Brazzein in *Pichia pastoris*

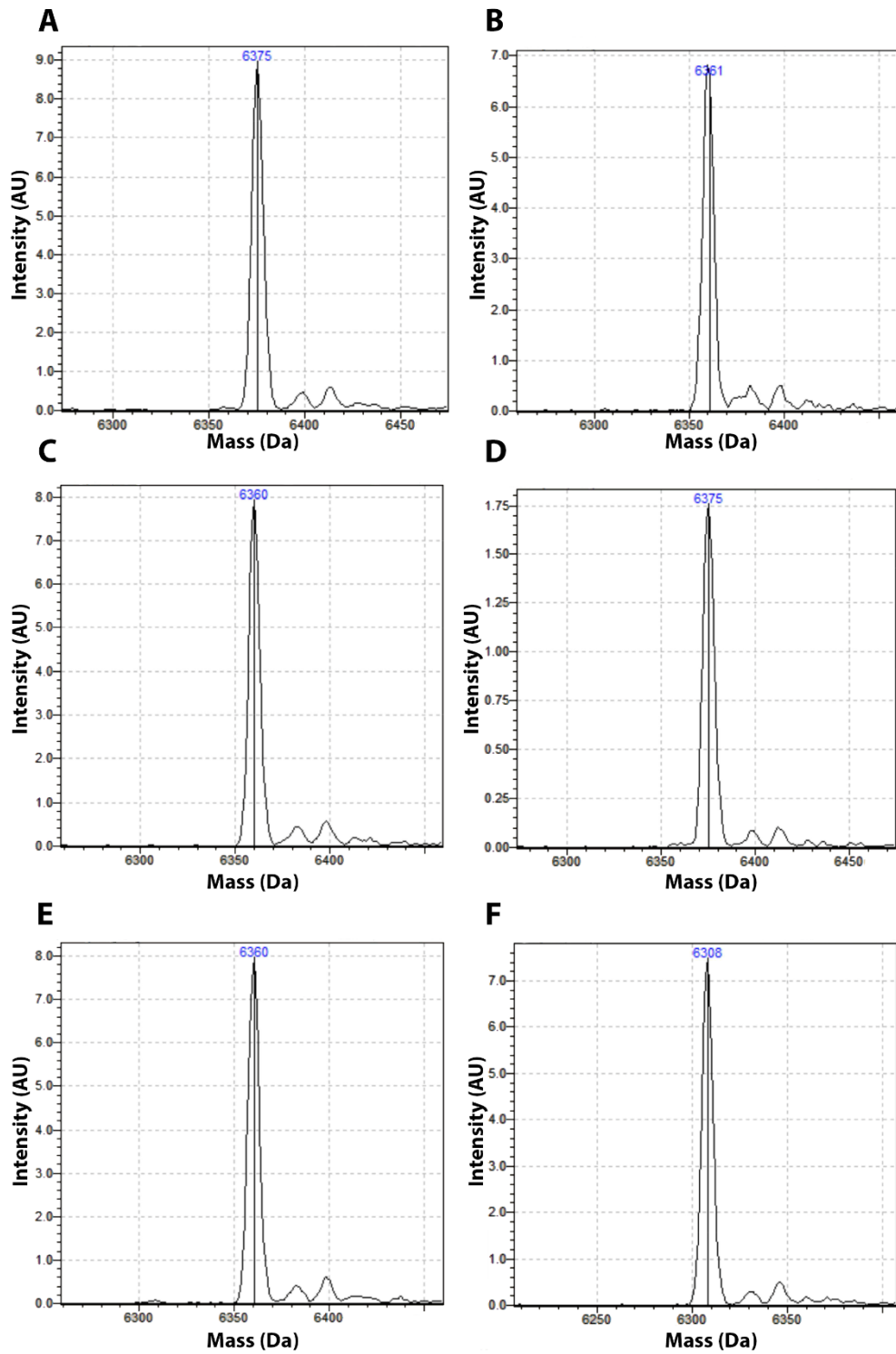


Figure S1. Mass spectra analyses of the 6 purified brazzein proteins. The calculated masses are indicated on the top of the main peak for each brazzein proteins resulting from the pAA-bra (A), pAE-bra (B), pAI-bra (C), pAL-bra (D), pAS-bra (E), pAV-bra (F) constructs.