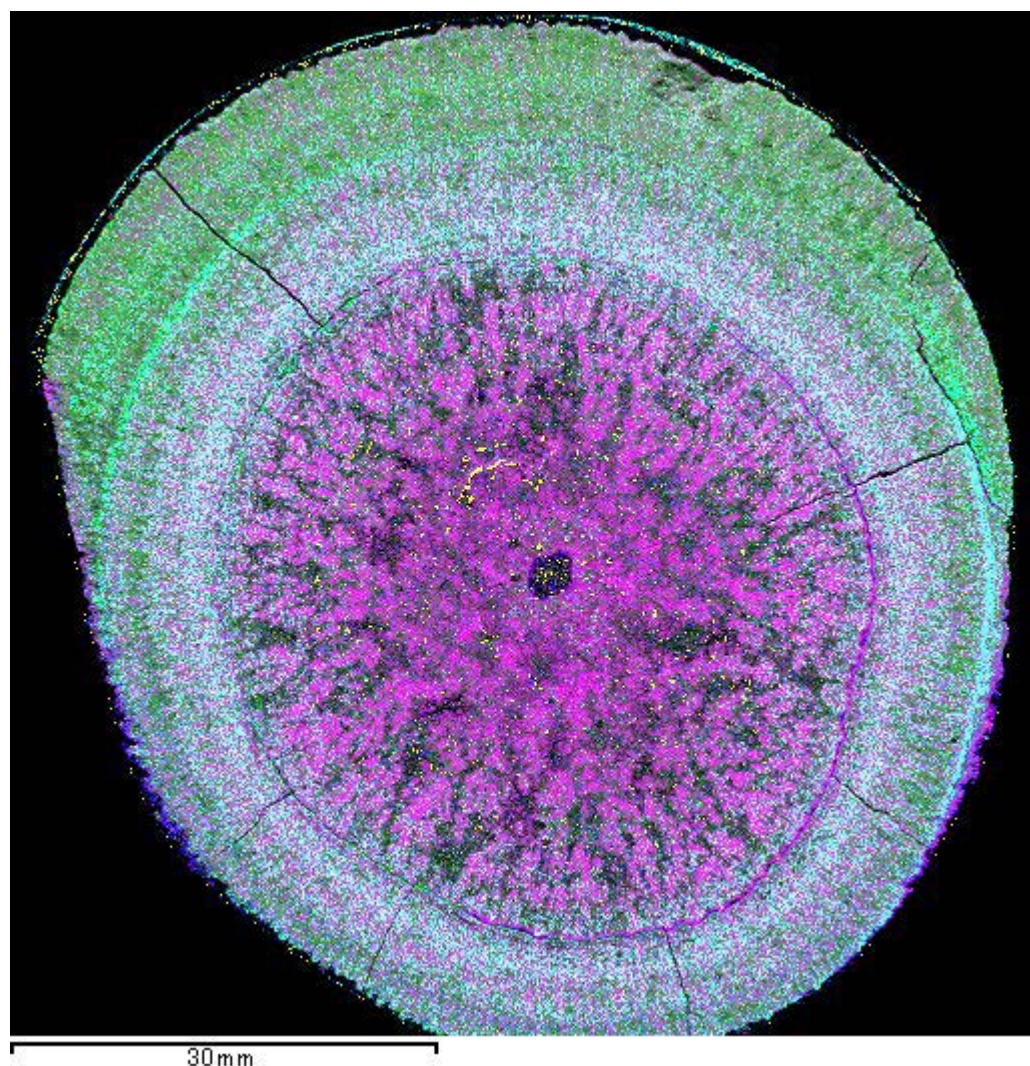
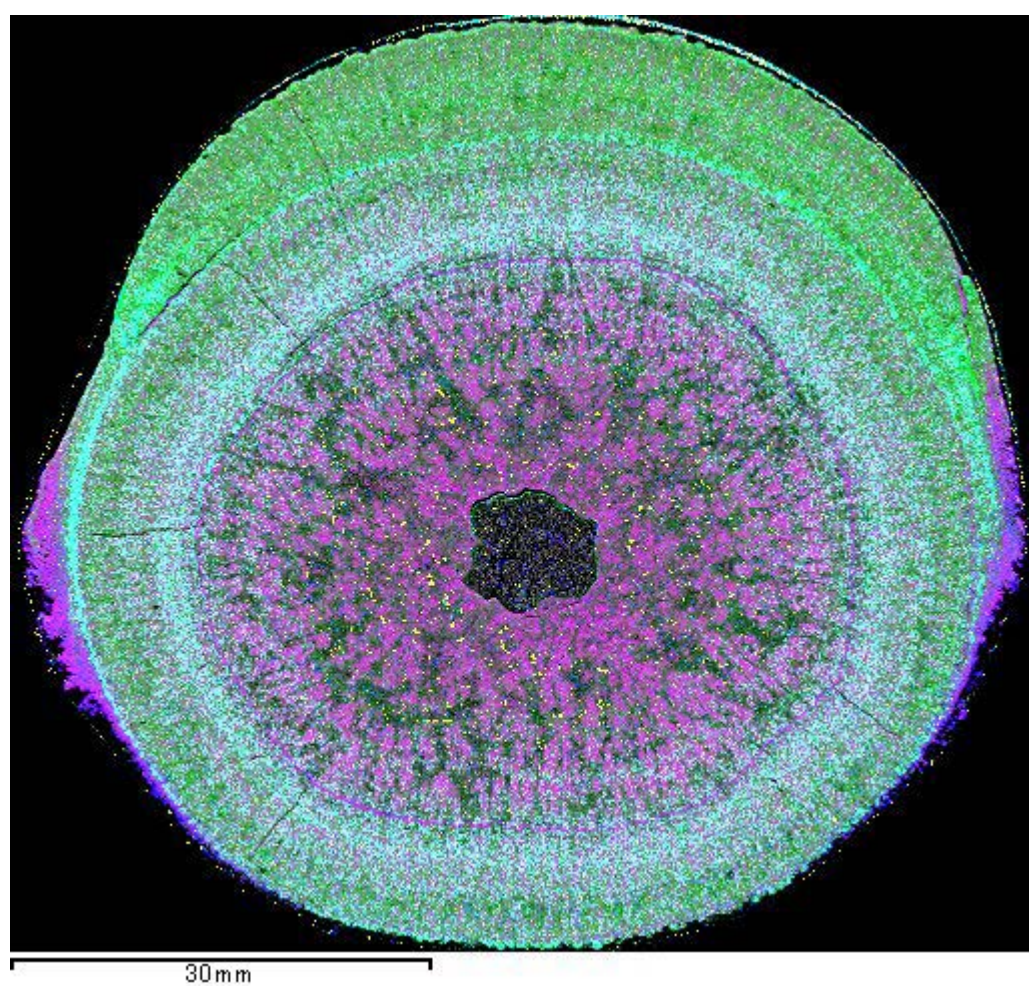


## East EEZ

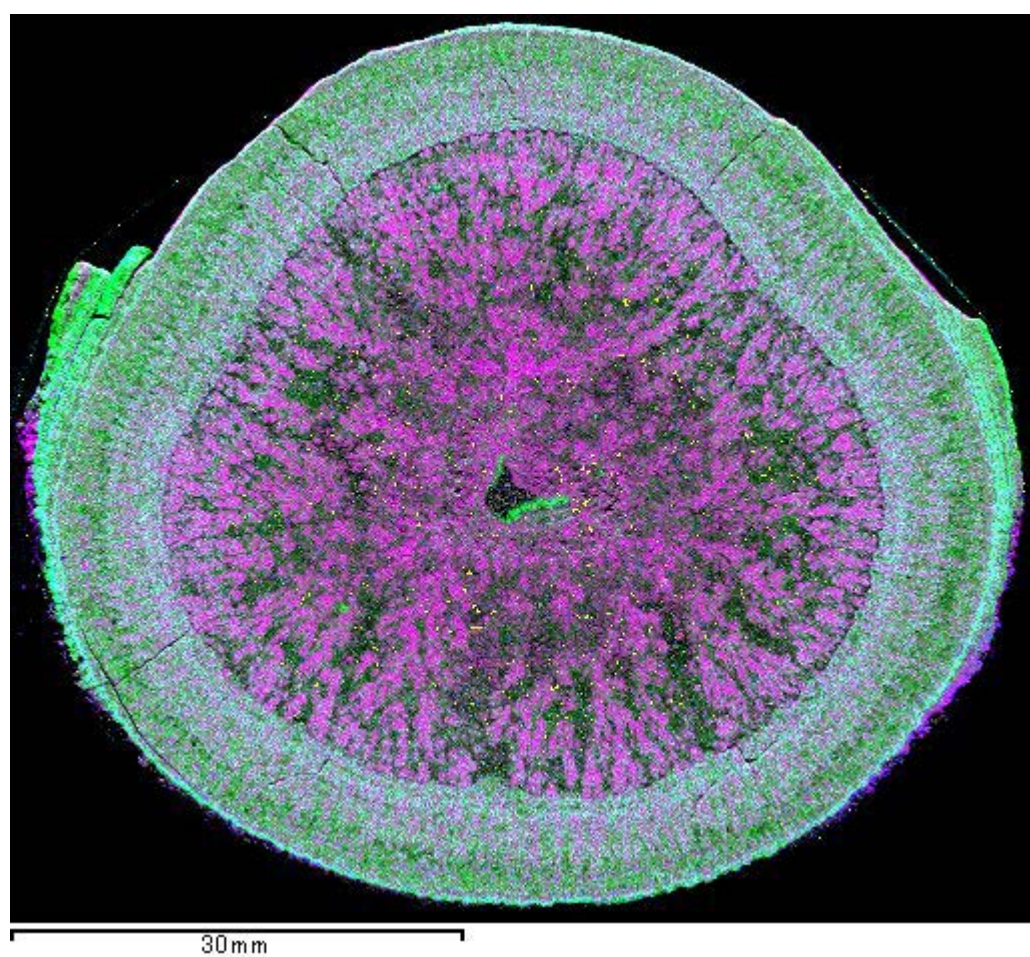
YK16-01 6K#1459N1-004



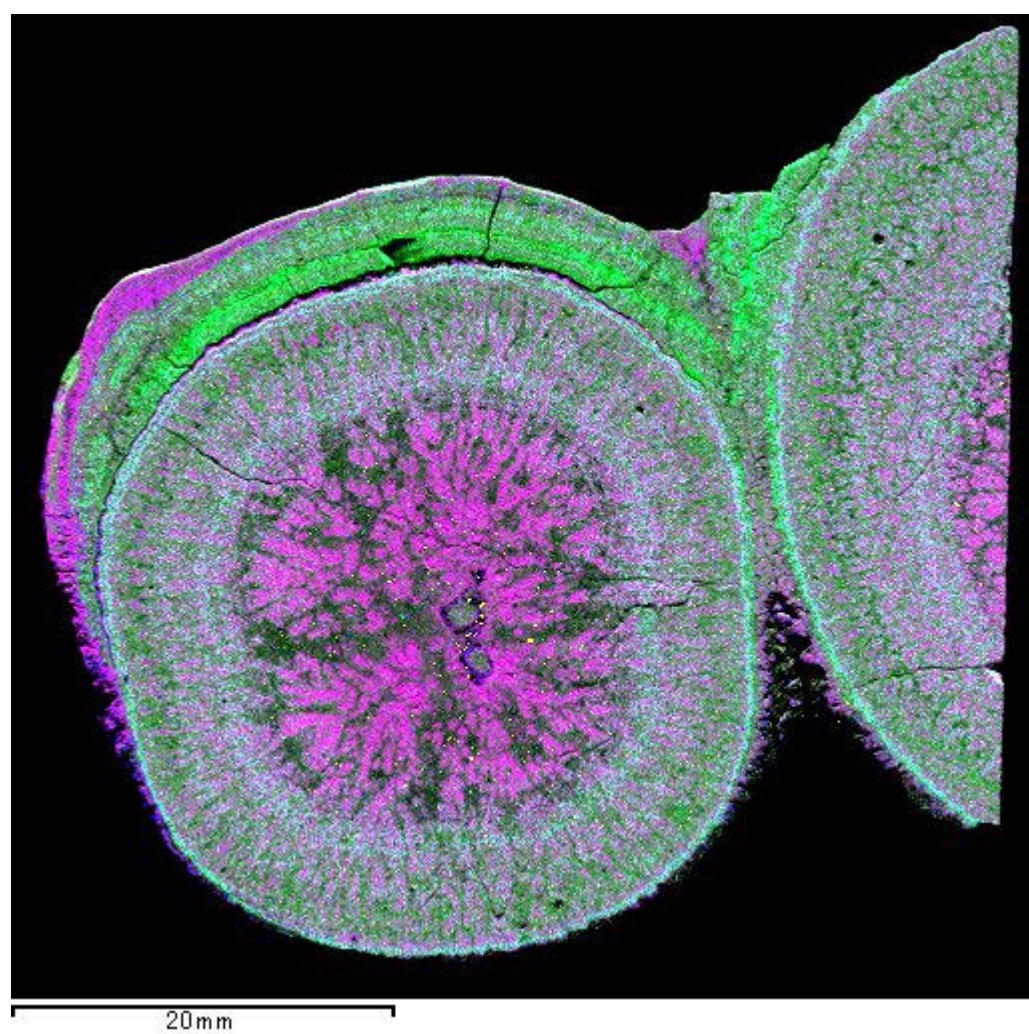
YK16-01 6K#1459N1-007



YK16-01 6K#1459N1-013a



YK16-01 6K#1459N1-013b

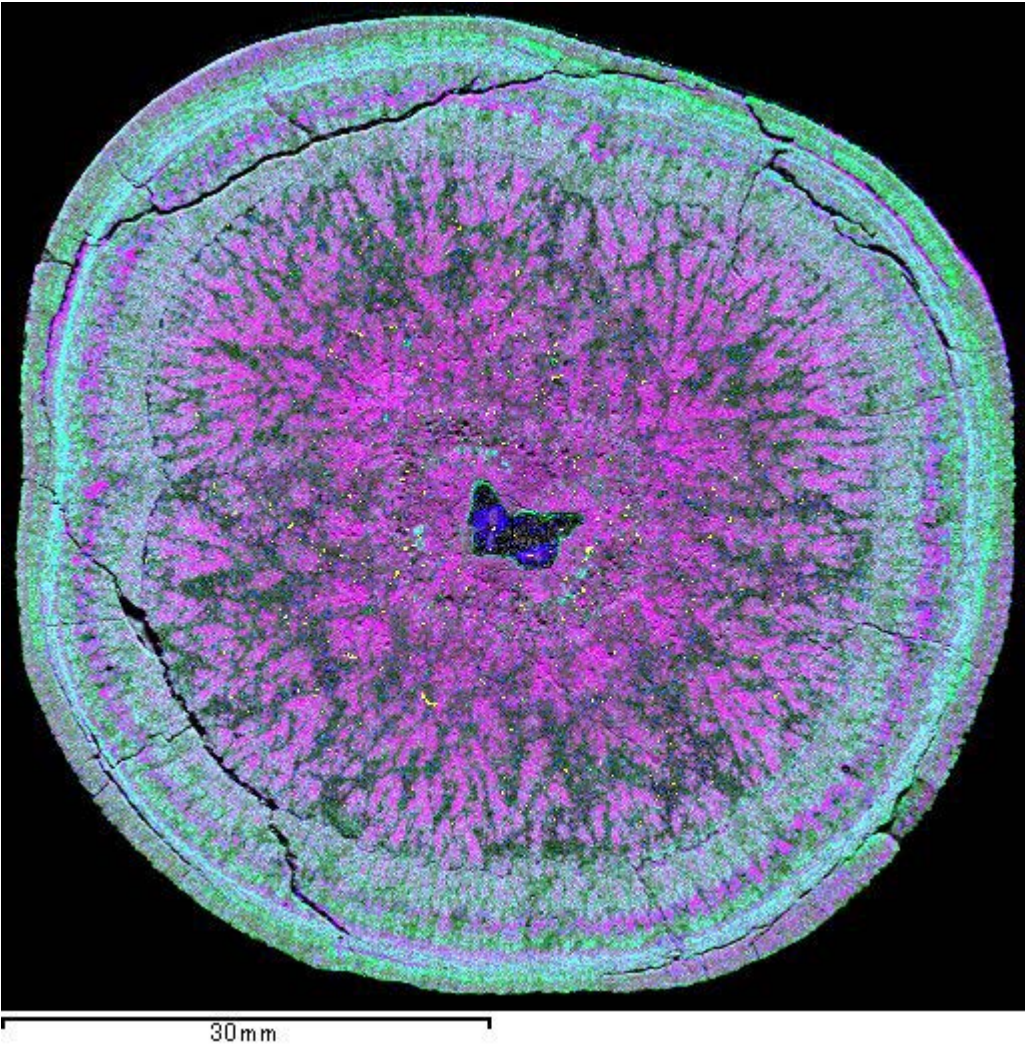


**Figure S1** Merged multichemical feature map of the samples analyzed in this study collected from site 6K#1459 in the East EEZ region during the cruise YK16-01. The gray field indicates the nucleus(nuclei) of each sample.

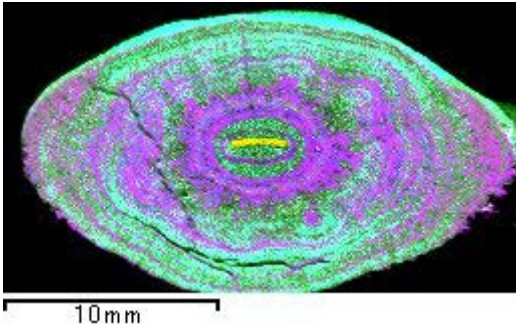


East EEZ

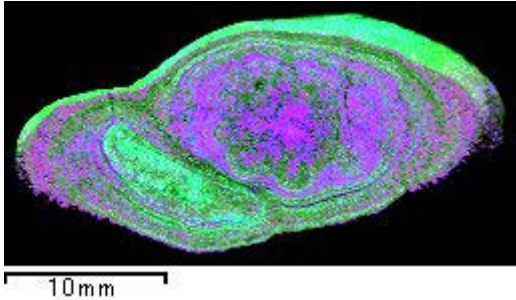
YK16-01 6K#1459N4-001



YK16-01 6K#1459N4-004a



YK16-01 6K#1459N4-004b



YK16-01 6K#1459N5-002



Figure S1 (Continued)

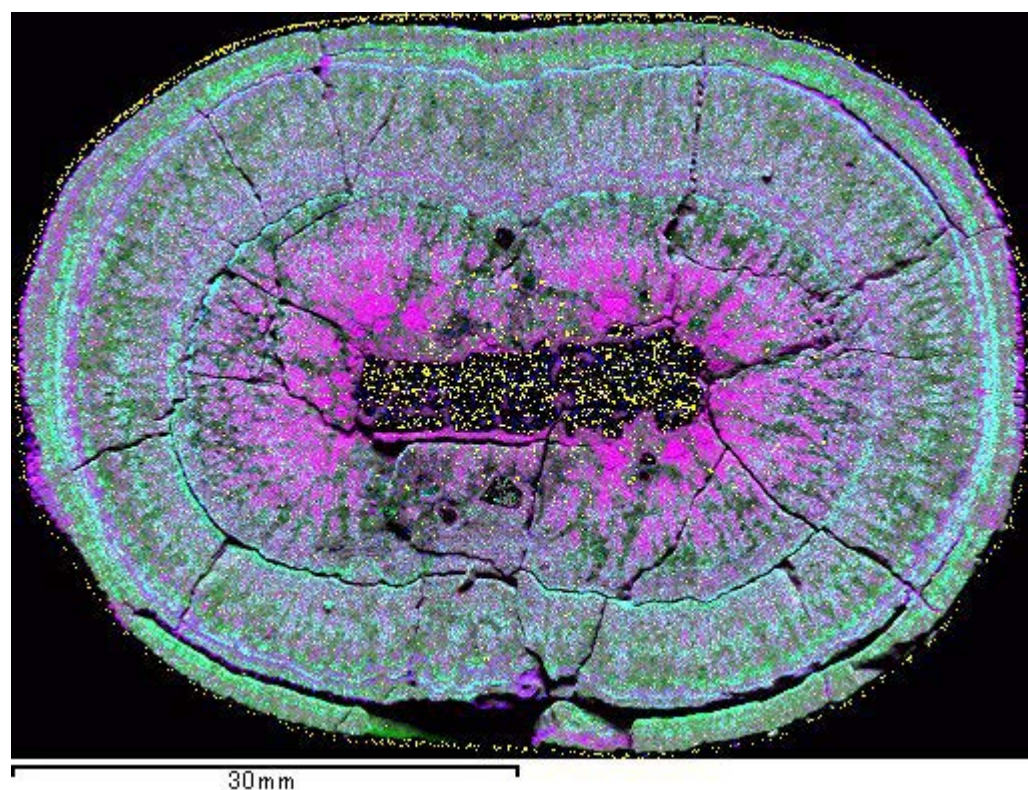


## Southeast EEZ

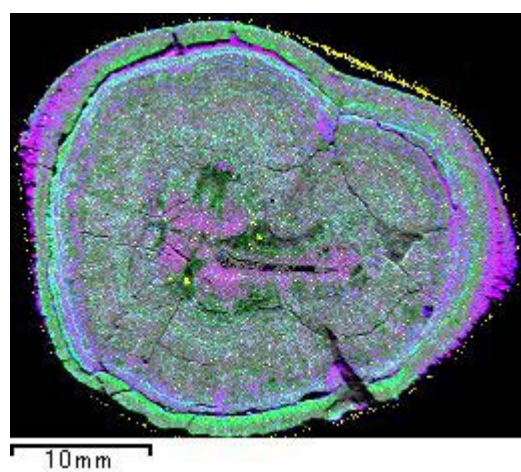
YK16-01 6K#1462N1-001A



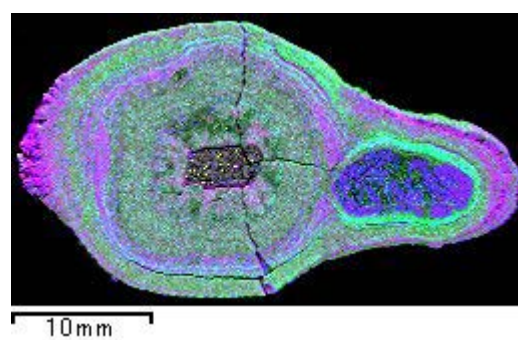
YK16-01 6K#1462N1-005



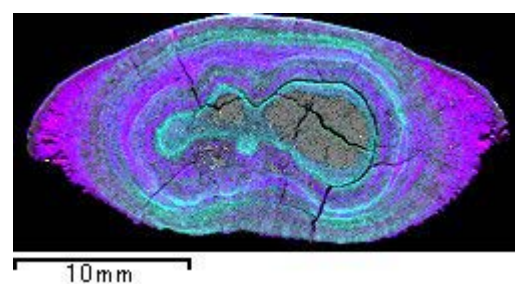
YK16-01 6K#1462N1-031



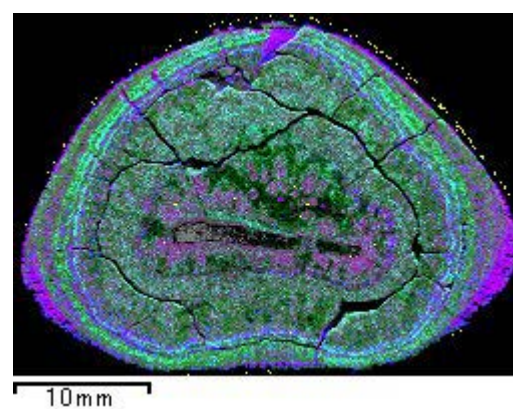
YK16-01 6K#1462N1-038



YK16-01 6K#1462N1-039



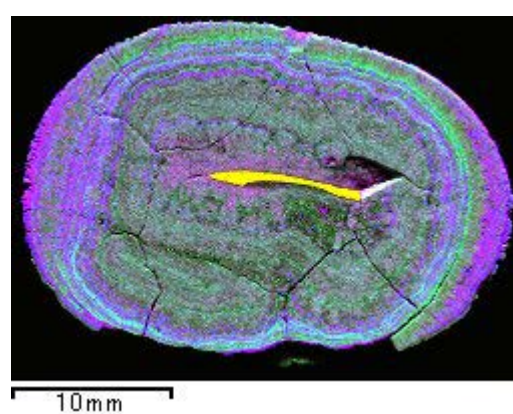
YK16-01 6K#1462N4-001B



YK16-01 6K#1462N5-002



YK16-01 6K#1462N5-006

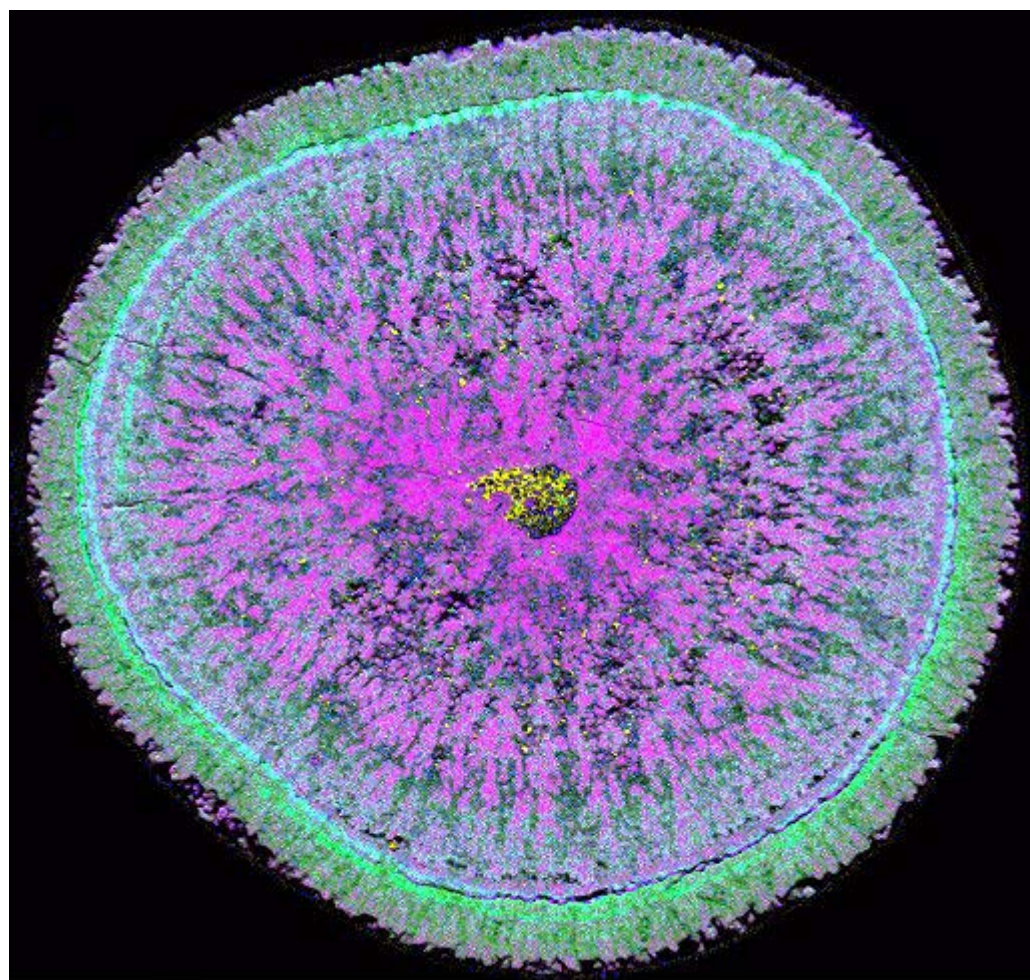


**Figure S2** Merged multichemical feature map of the samples analyzed in this study collected from site 6K#1462 in the Southeast EEZ region during the cruise YK16-01. The gray field indicates the nucleus(nuclei) of each sample.

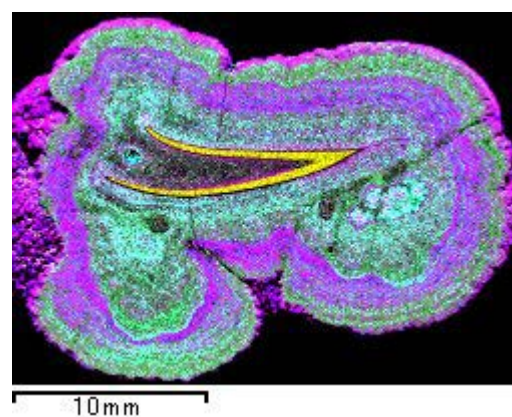


# Southeast EEZ

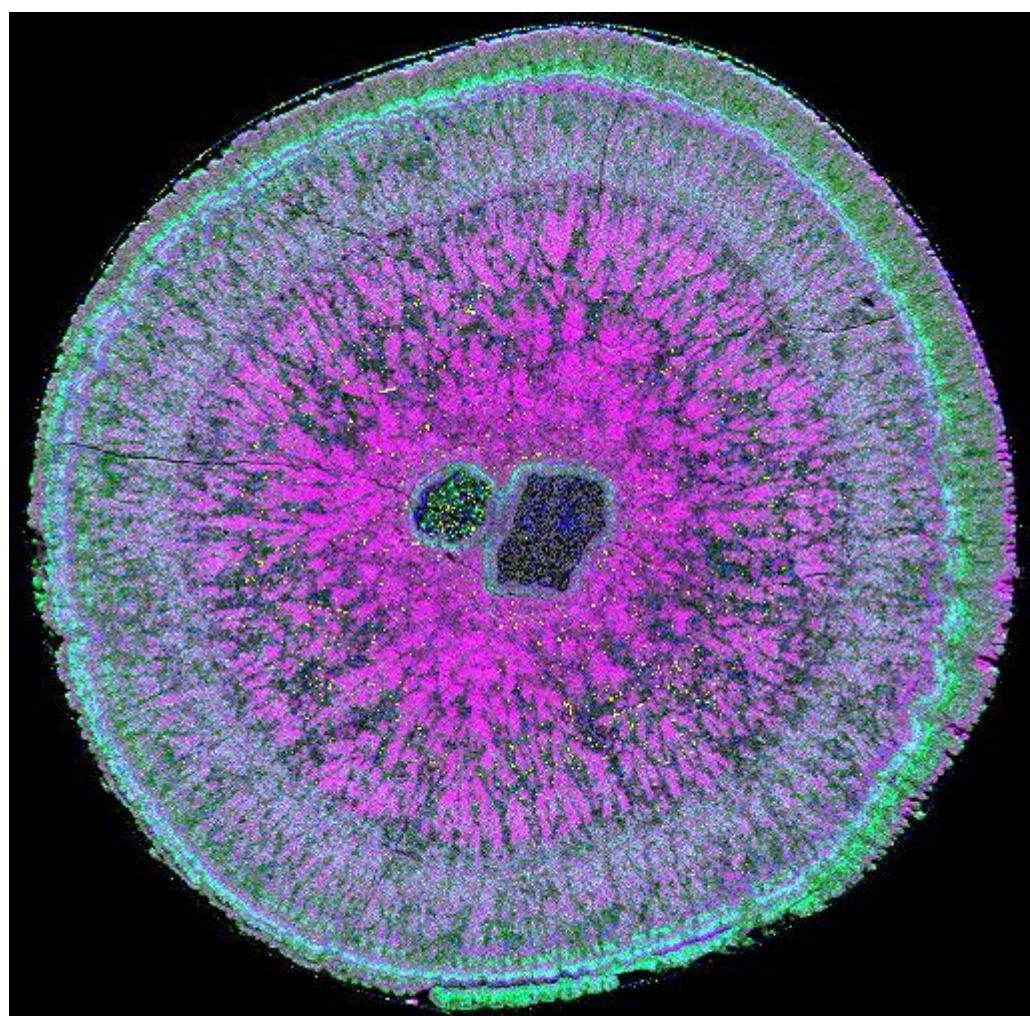
YK16-01 6K#1463N1-010



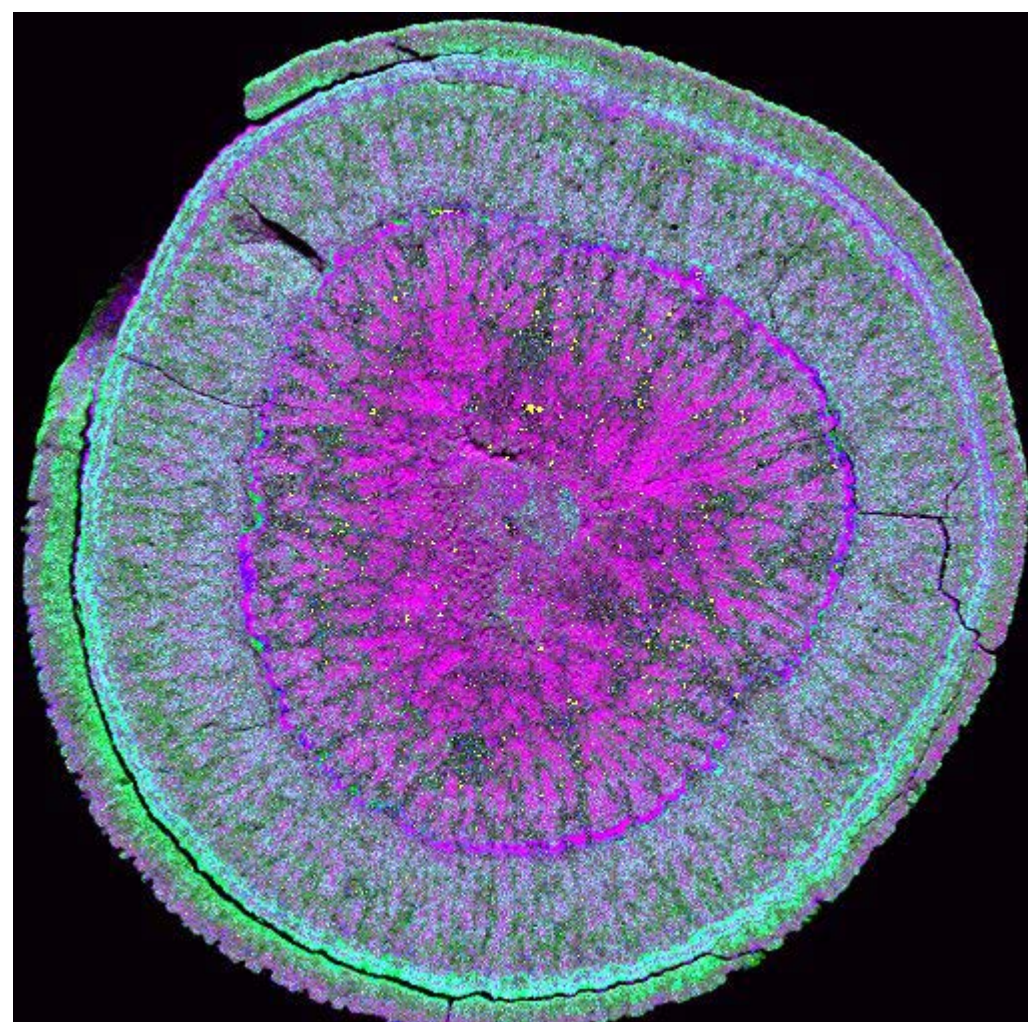
YK16-01 6K#1463N1-015



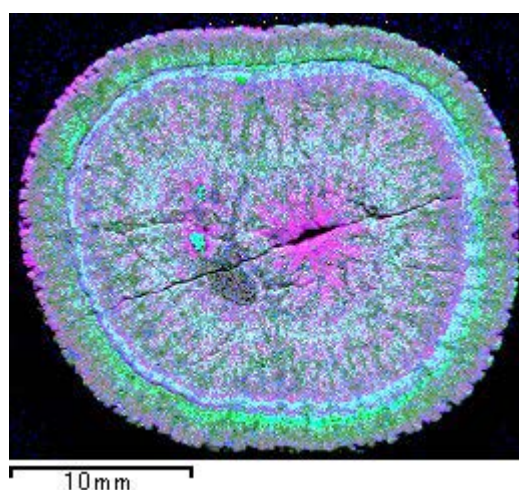
YK16-01 6K#1463N2-002



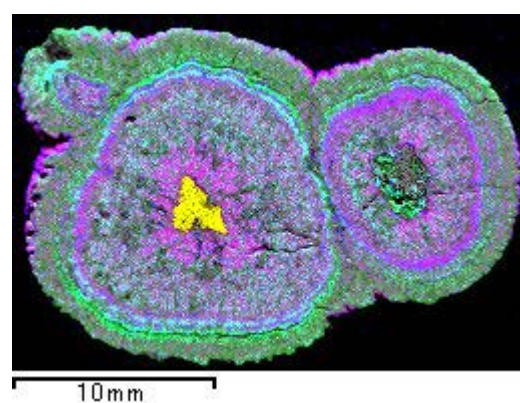
YK16-01 6K#1463N2-014



YK16-01 6K#1463N2-019



YK16-01 6K#1463N2-023

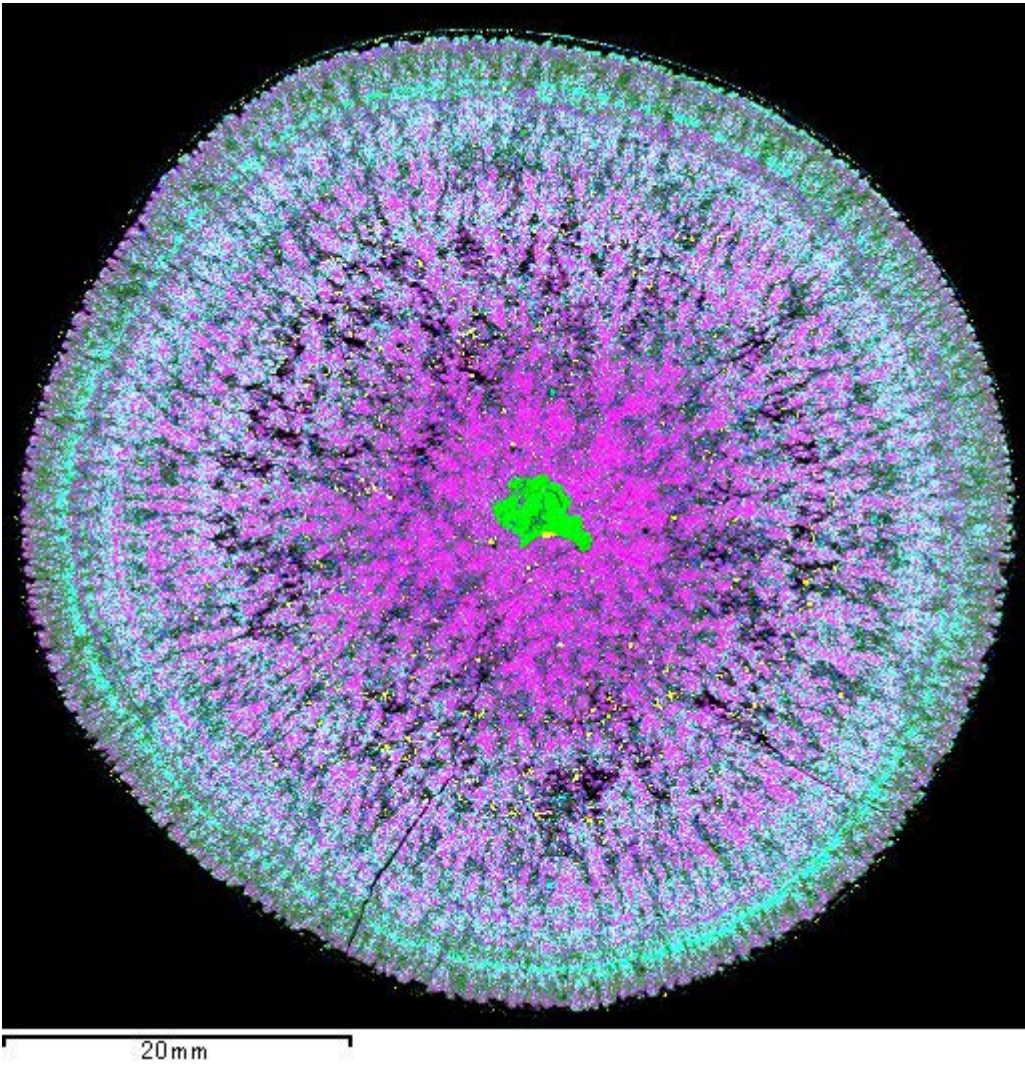


**Figure S3** Merged multichemical feature map of the samples analyzed in this study collected from site 6K#1463 in the Southeast EEZ region during the cruise YK16-01. The gray field indicates the nucleus(nuclei) of each sample.

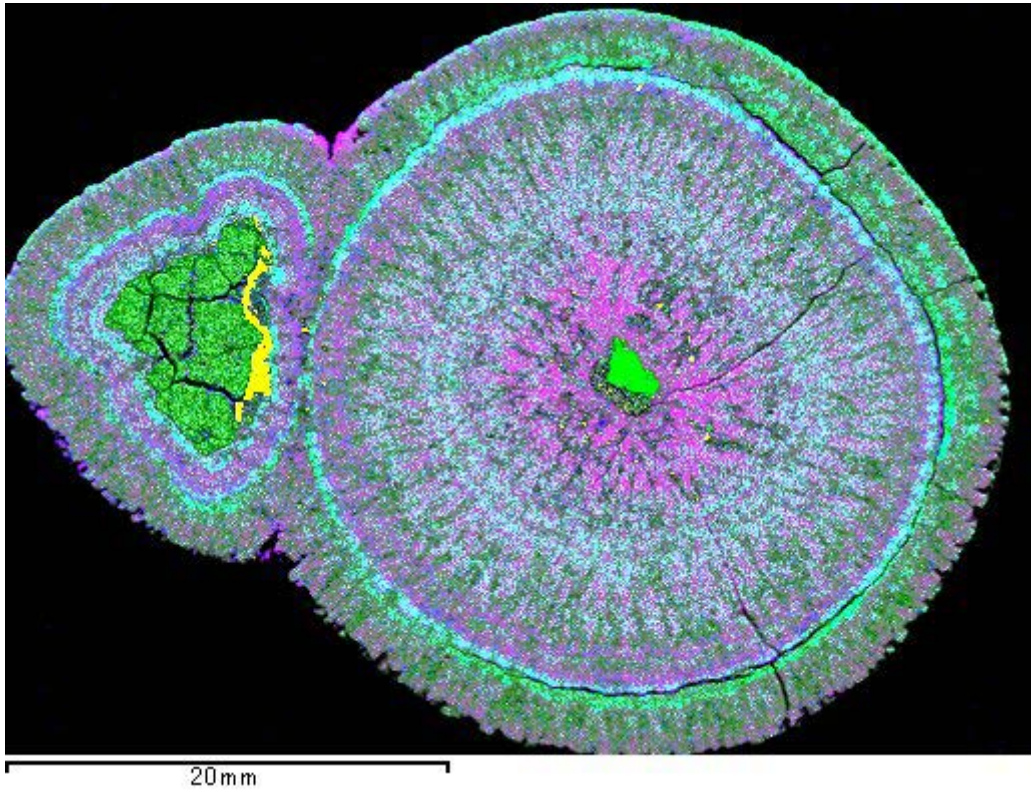


Southeast EEZ

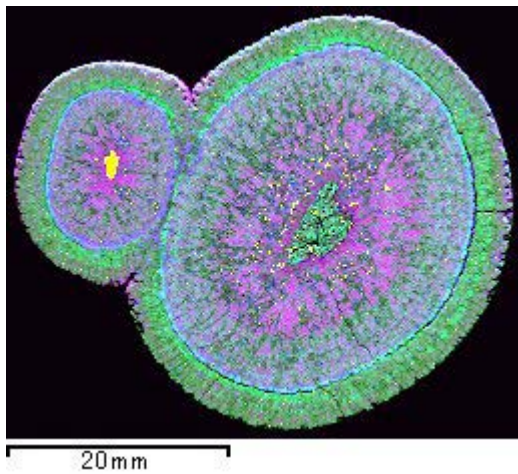
YK16-01 6K#1463N3-002



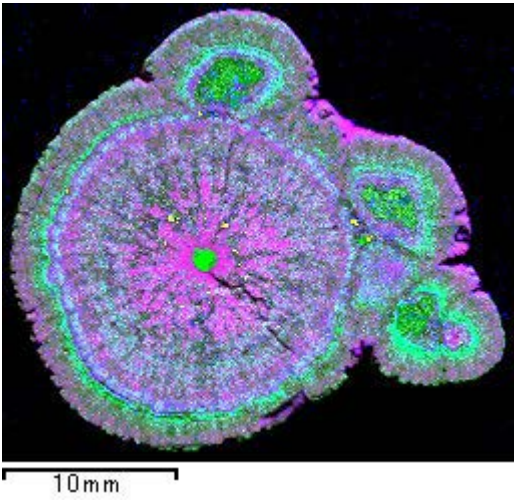
YK16-01 6K#1463N3-008



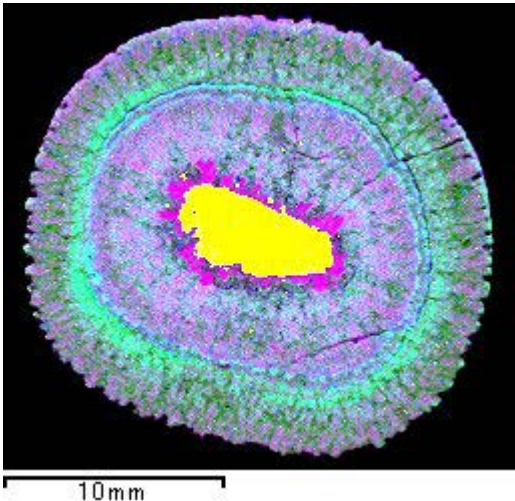
YK16-01 6K#1463N3-007



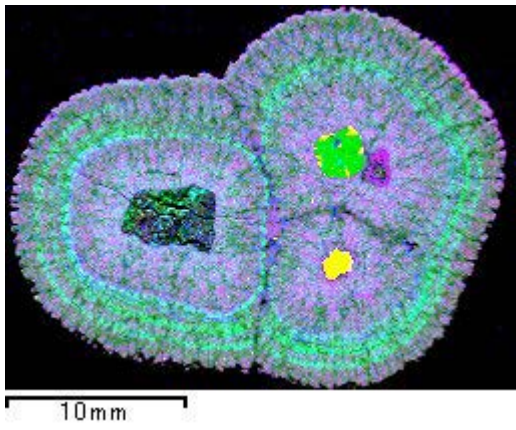
YK16-01 6K#1463N3-016



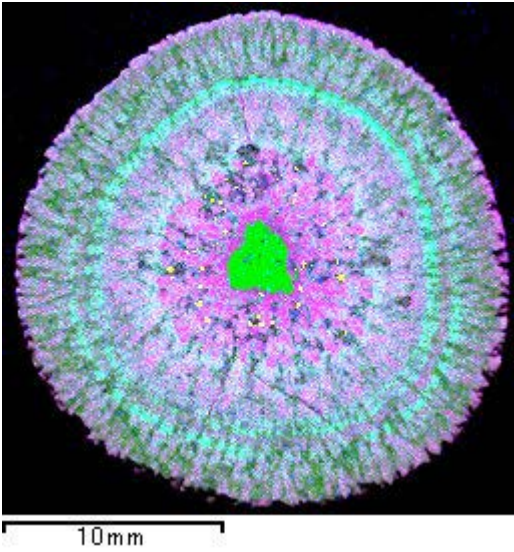
YK16-01 6K#1463N4-007



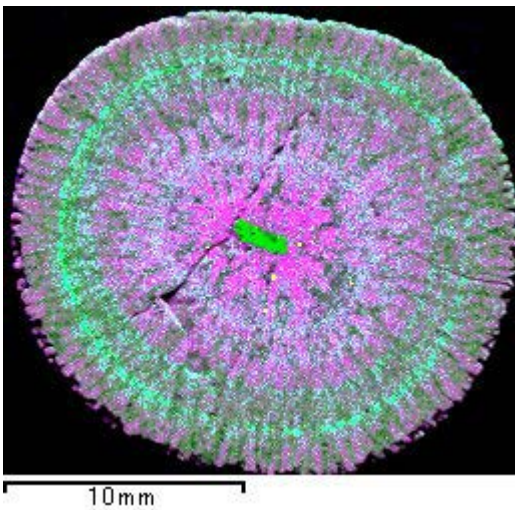
YK16-01 6K#1463N4-009



YK16-01 6K#1463N4-010



YK16-01 6K#1463N5-007



YK16-01 6K#1463N5-009

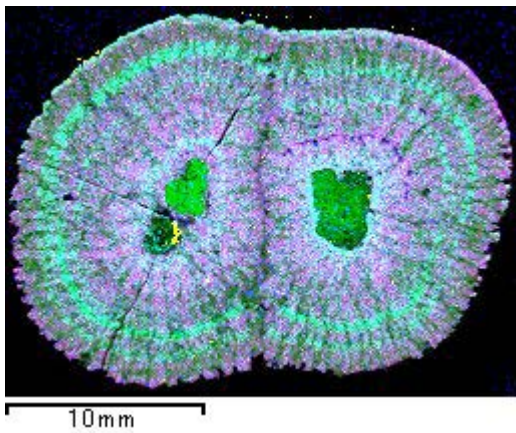
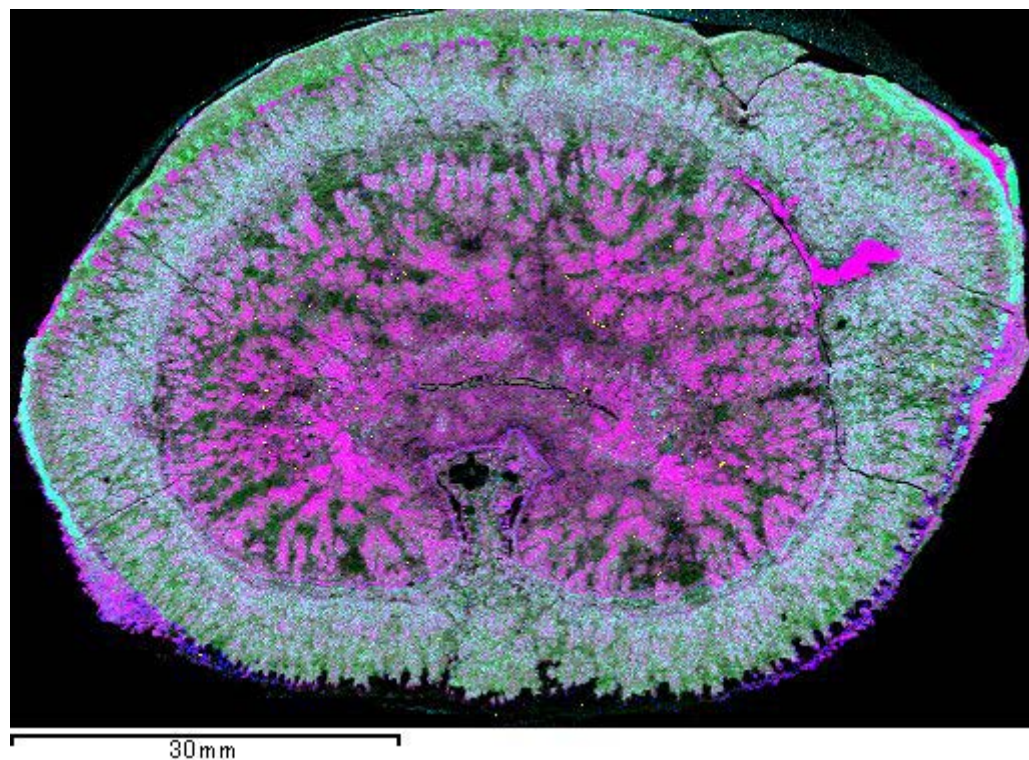


Figure S3 (Continued)



# Around Takuyo Daigo SMT

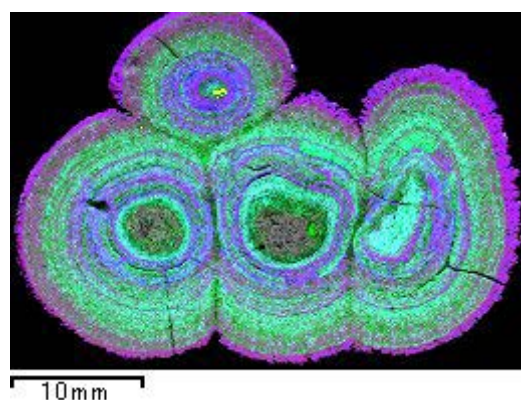
YK16-01 6K#1460N1-002



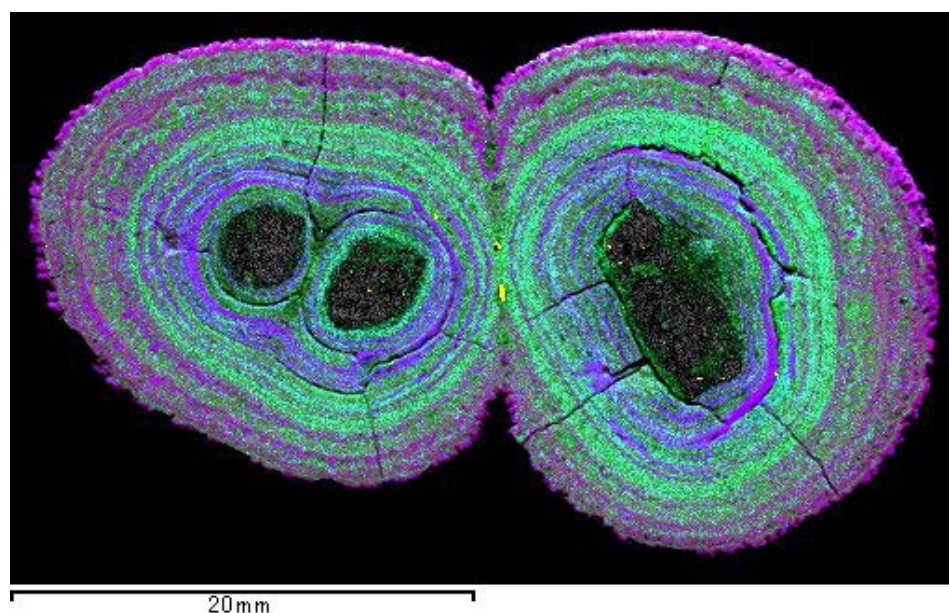
YK16-01 6K#1460N2-004



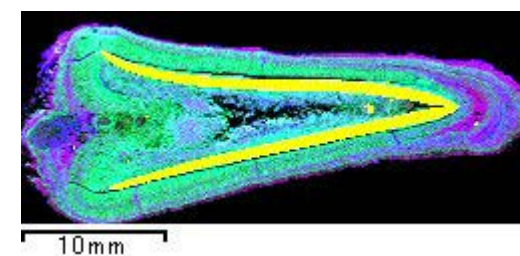
YK16-01 6K#1461N1-002



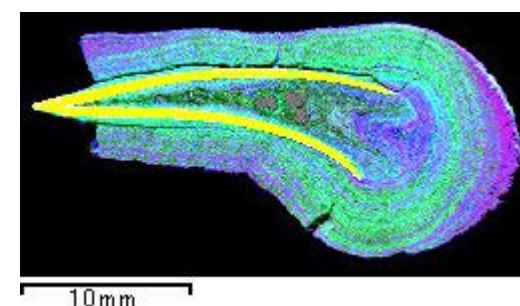
YK16-01 6K#1461N1-006



YK16-01 6K#1461N1-005



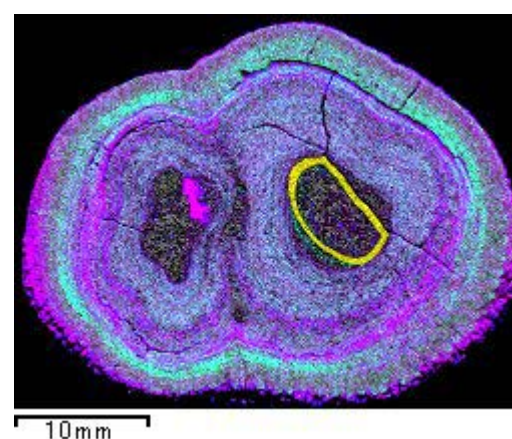
YK16-01 6K#1461N2-013



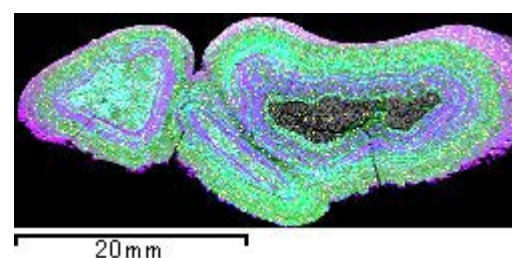
YK16-01 6K#1465N4-009



YK16-01 6K#1465N4-001B



YK16-01 6K#1465N4-011

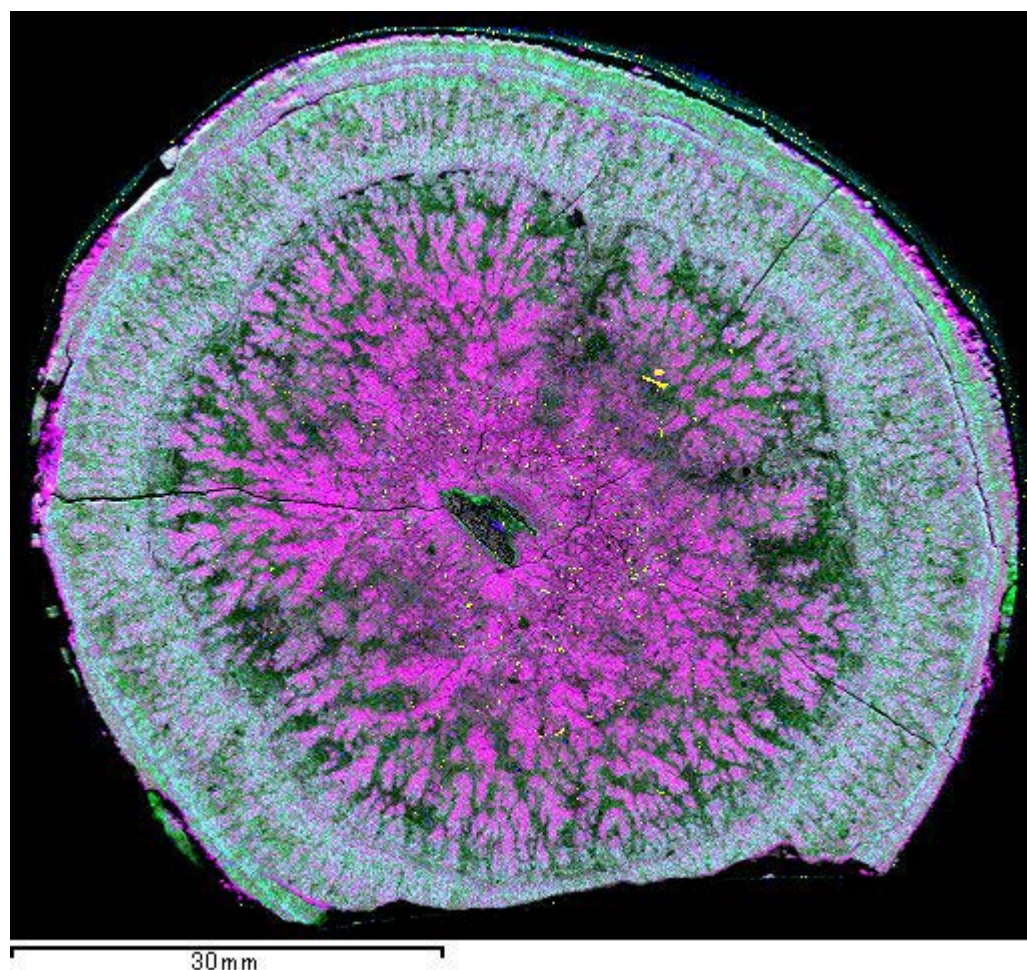


**Figure S4** Merged multichemical feature map of the samples analyzed in this study collected from sites 6K#1460, 6K#1461, and 6K#1465 in the Around Takuyo Daigo Seamount region during the cruise YK16-01. The gray field indicates the nucleus(nuclei) of each sample.

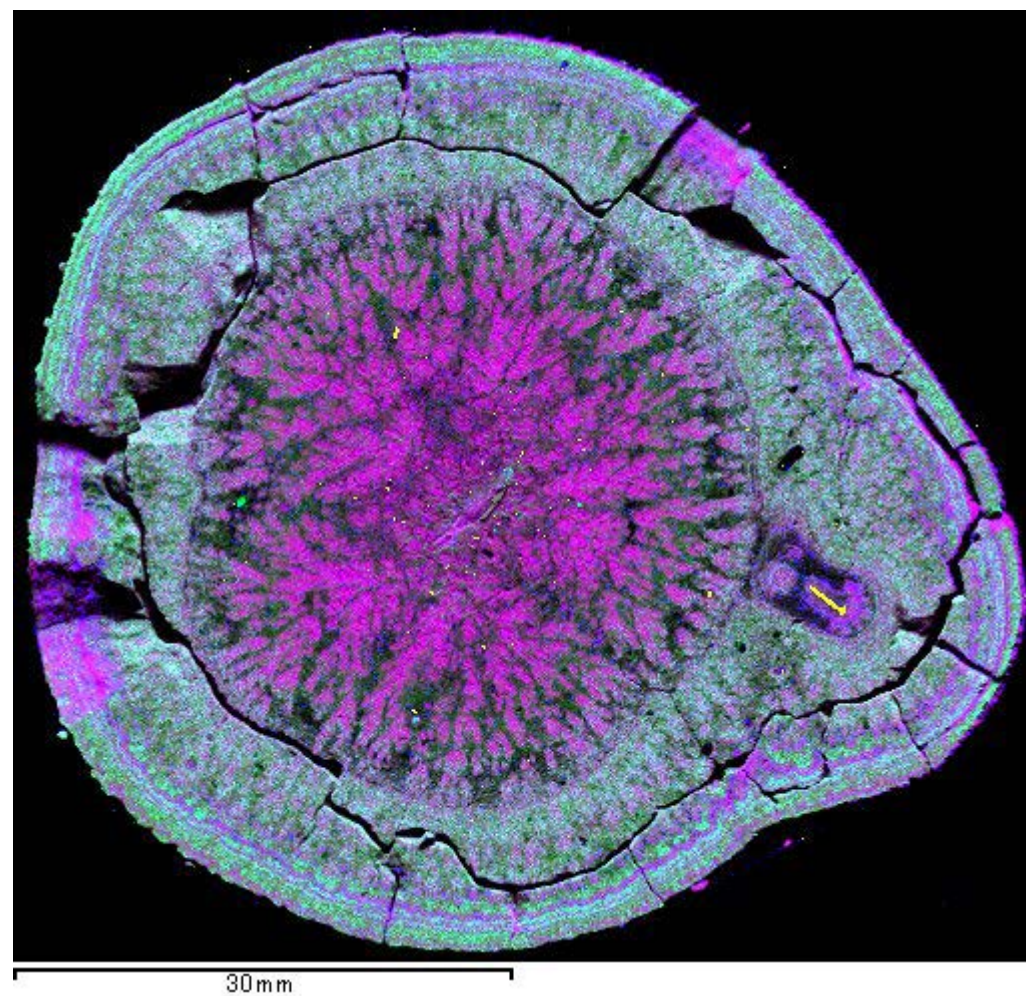


## Around Takuyo Daigo SMT

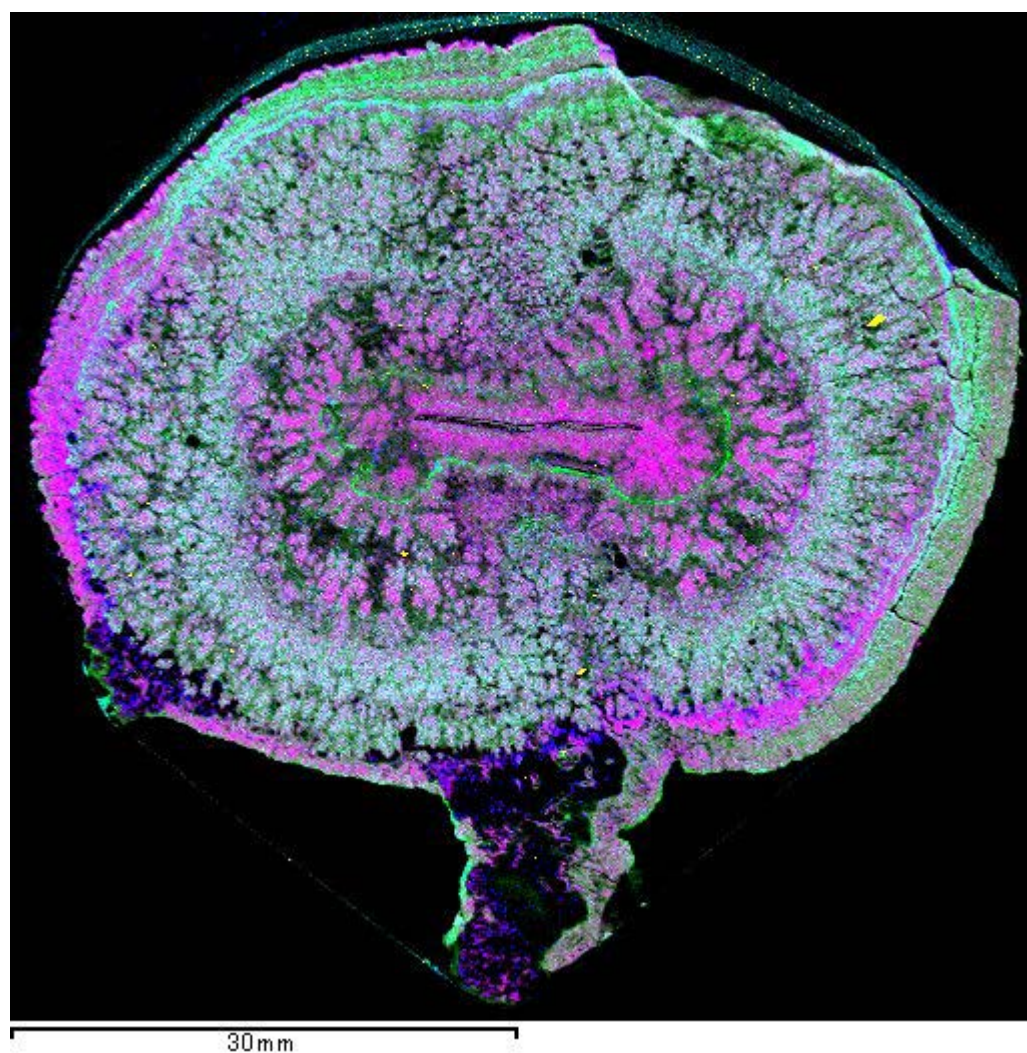
YK16-01 6K#1464N1-002



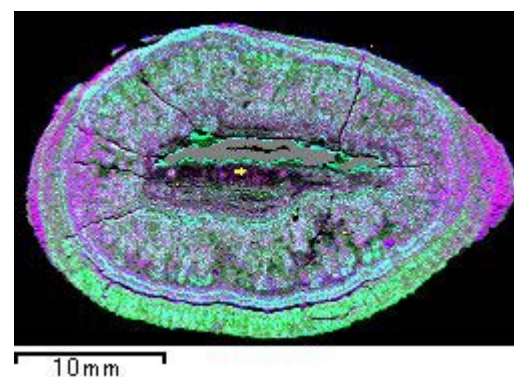
YK16-01 6K#1464N1-006



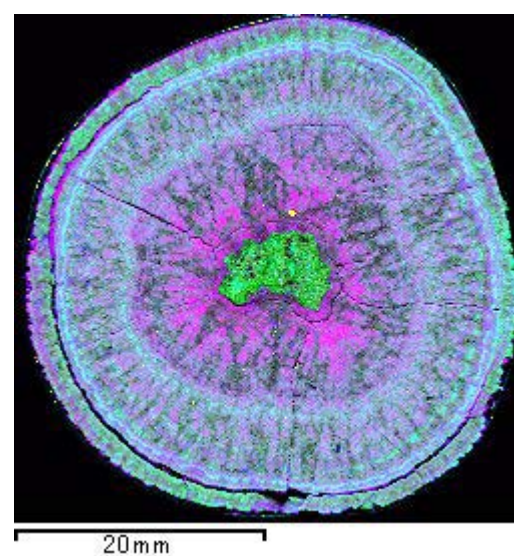
YK16-01 6K#1464N2-001



YK16-01 6K#1464N3-001D



YK16-01 6K#1464N3-008

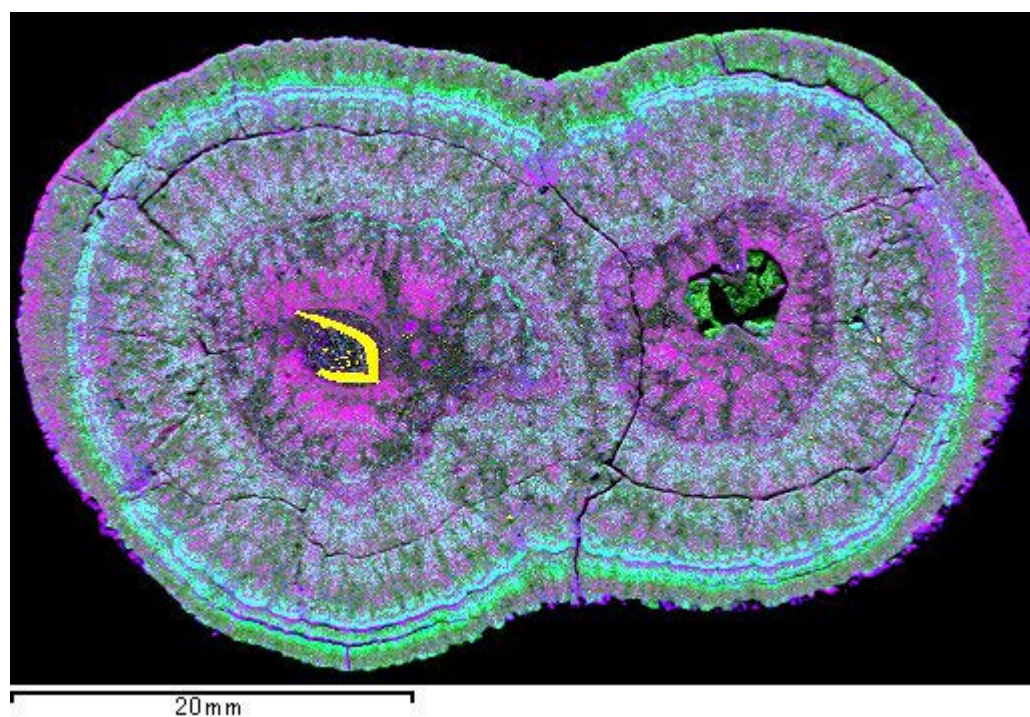


**Figure S5** Merged multichemical feature map of the samples analyzed in this study collected from site 6K#1464 in the Around Takyo Daigo Seamount region during the cruise YK16-01. The gray field indicates the nucleus(nuclei) of each sample.

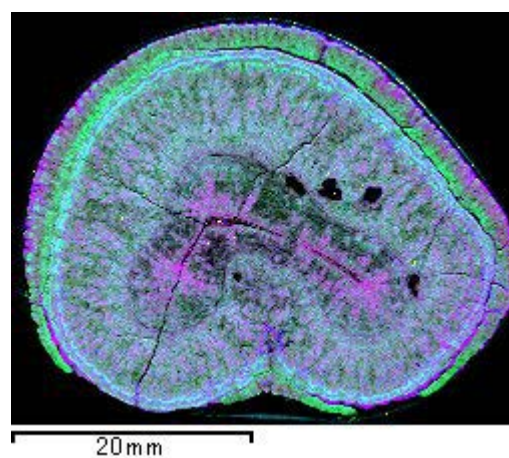


**Around Takuyo Daigo SMT**

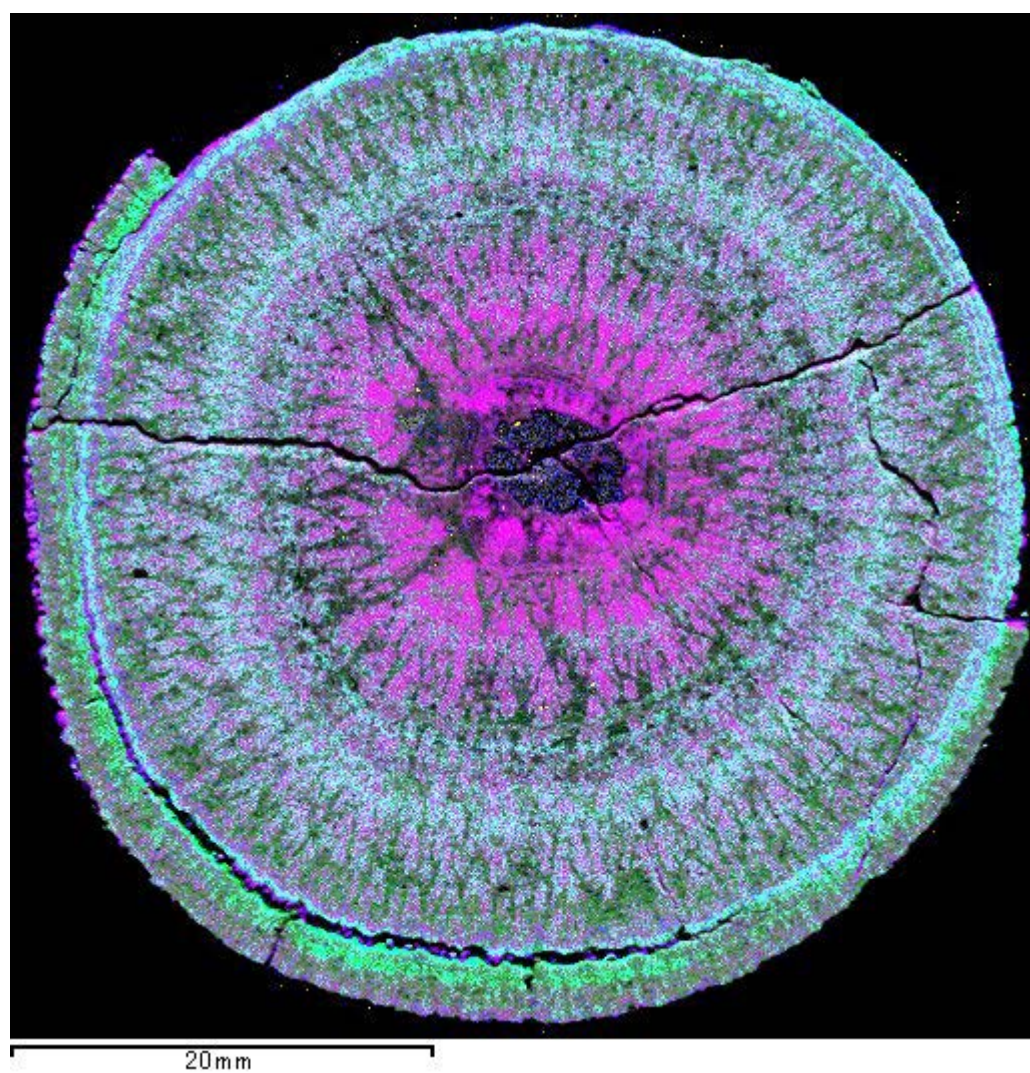
**YK16-01 6K#1464N4-001**



**YK16-01 6K#1464N4-010**



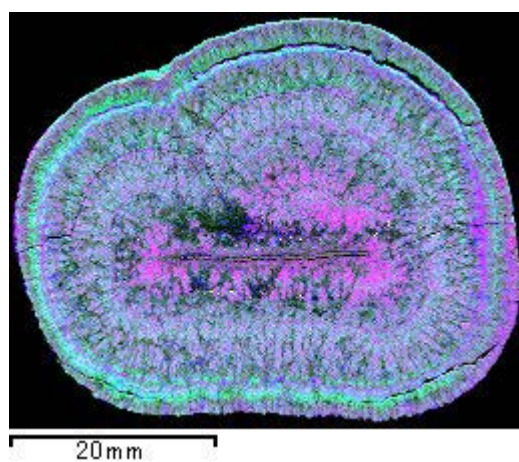
**YK16-01 6K#1464N5-004**



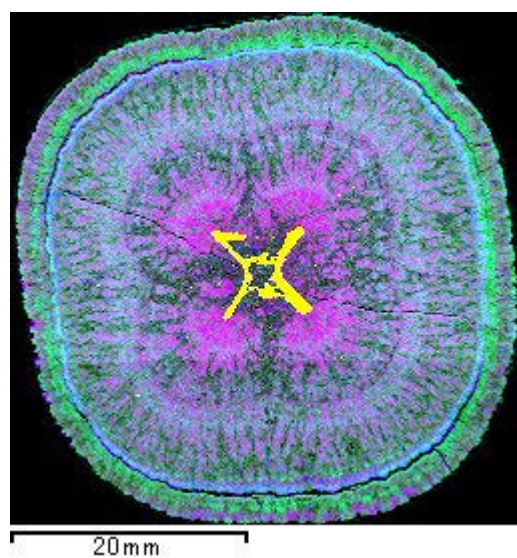
**YK16-01 6K#1464N5-011**



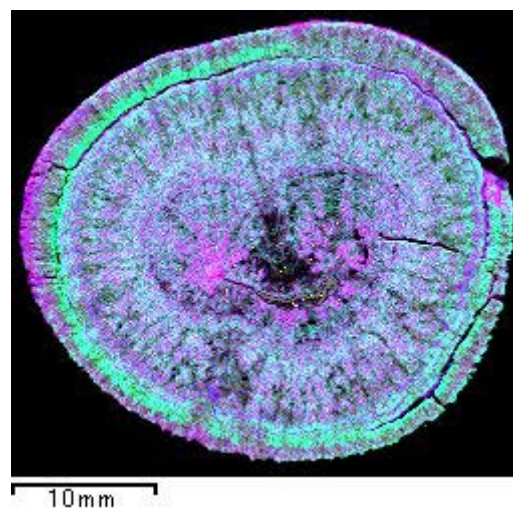
**YK16-01 6K#1464N6-006**



**YK16-01 6K#1464N6-007**



**YK16-01 6K#1464N6-013**



**Figure S5 (Continued)**