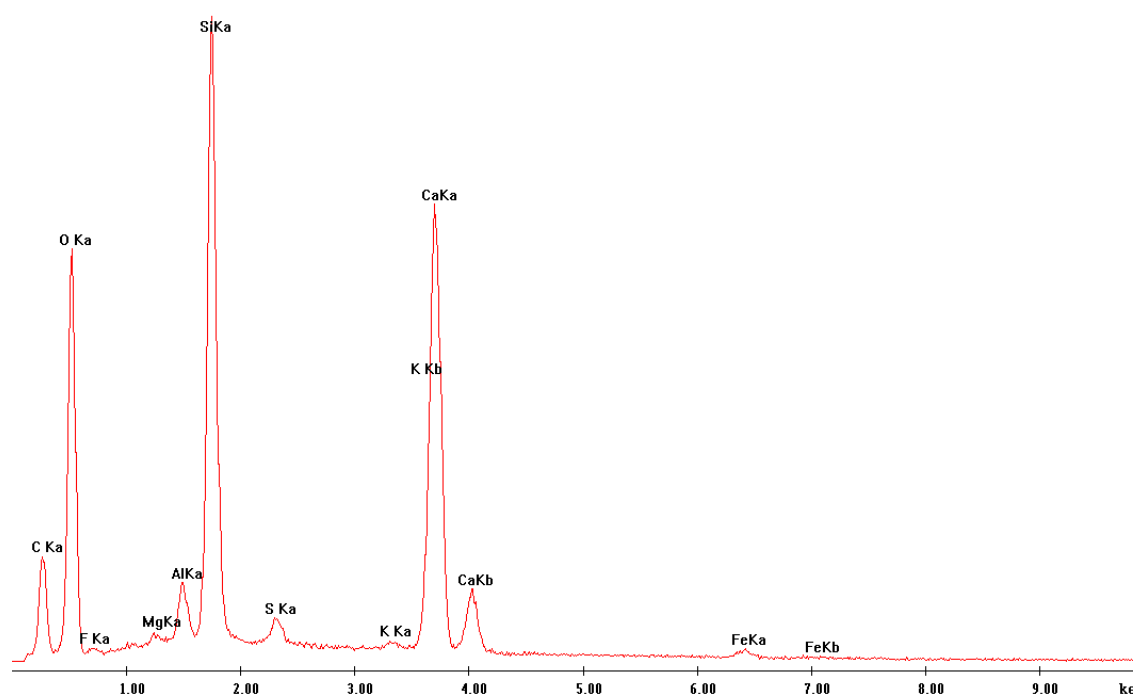


# Supplementary Materials: Biostratinomy and Diagenetic Impact on Exceptional Preservation of Coccospheres from Lower Oligocene Coccolith Limestones

Agnieszka Ciurej, Marta Bąk and Marek Szczerba

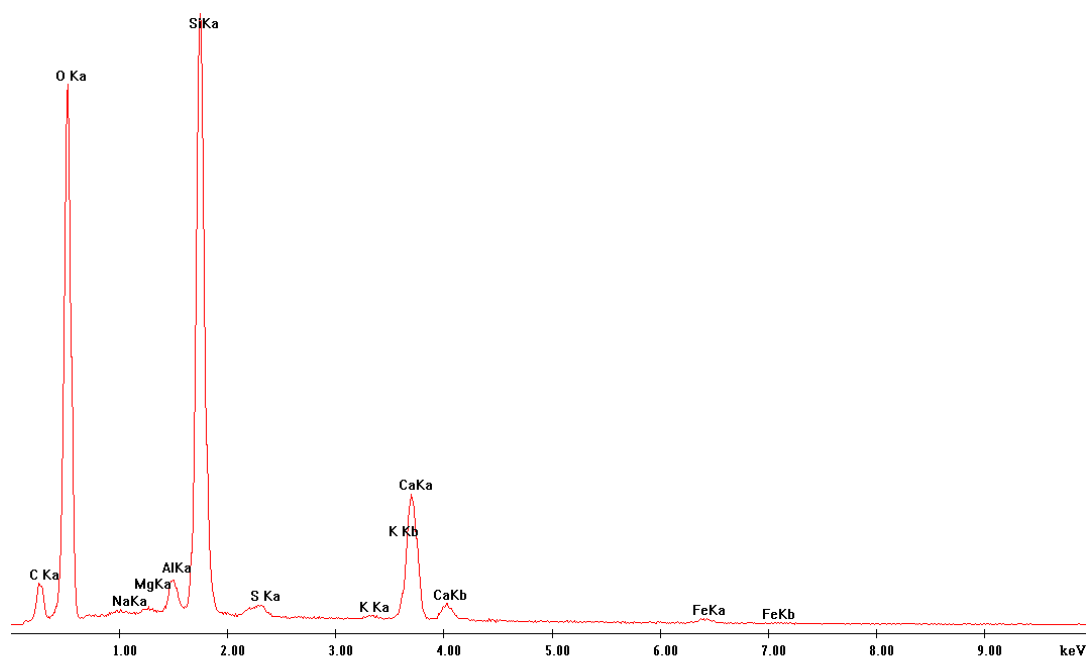
This supplement contains: Supplementary Figures S1–S5

Label A: TSt12



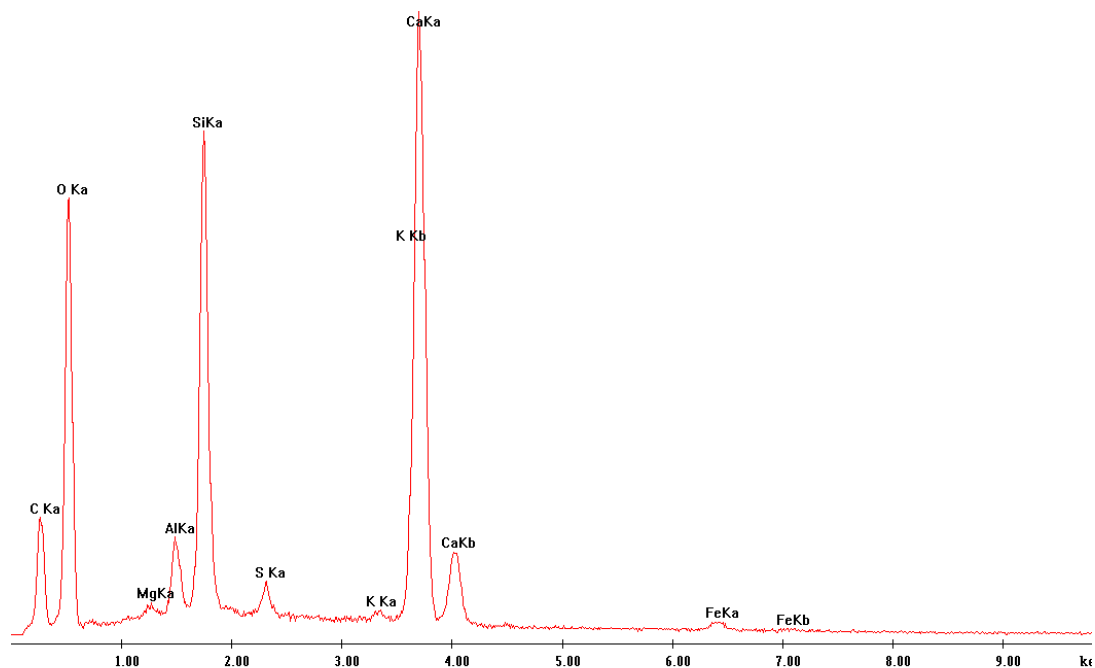
(a)

Label A: TS112



(b)

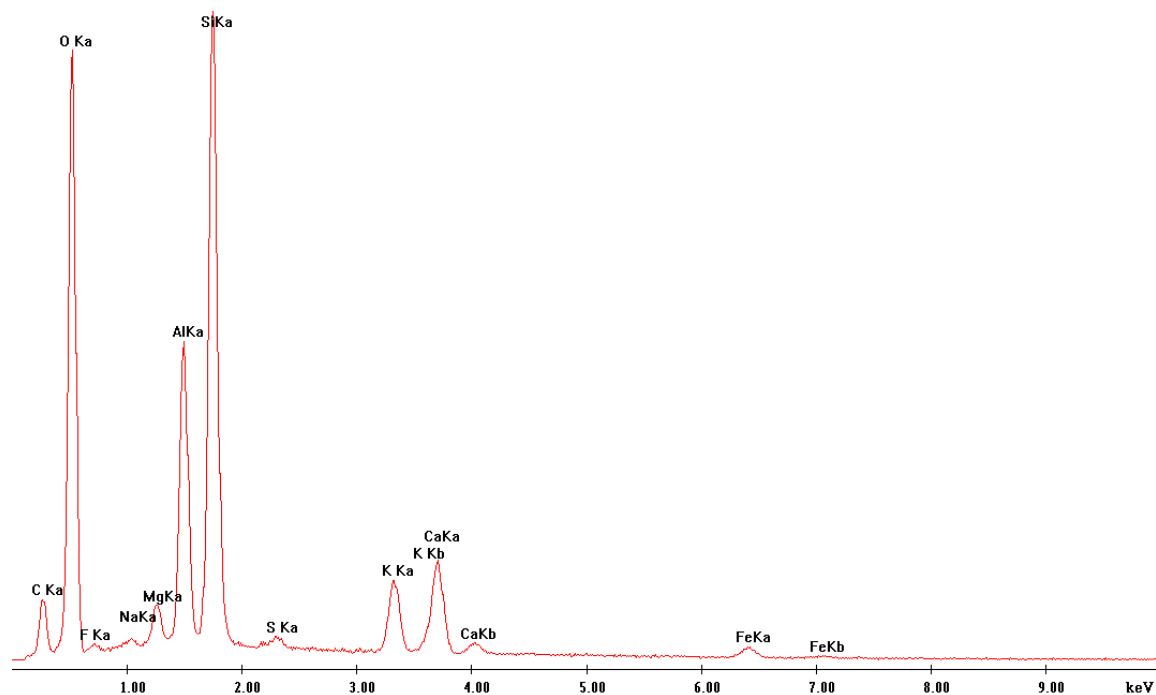
Label A: TS112



(c)

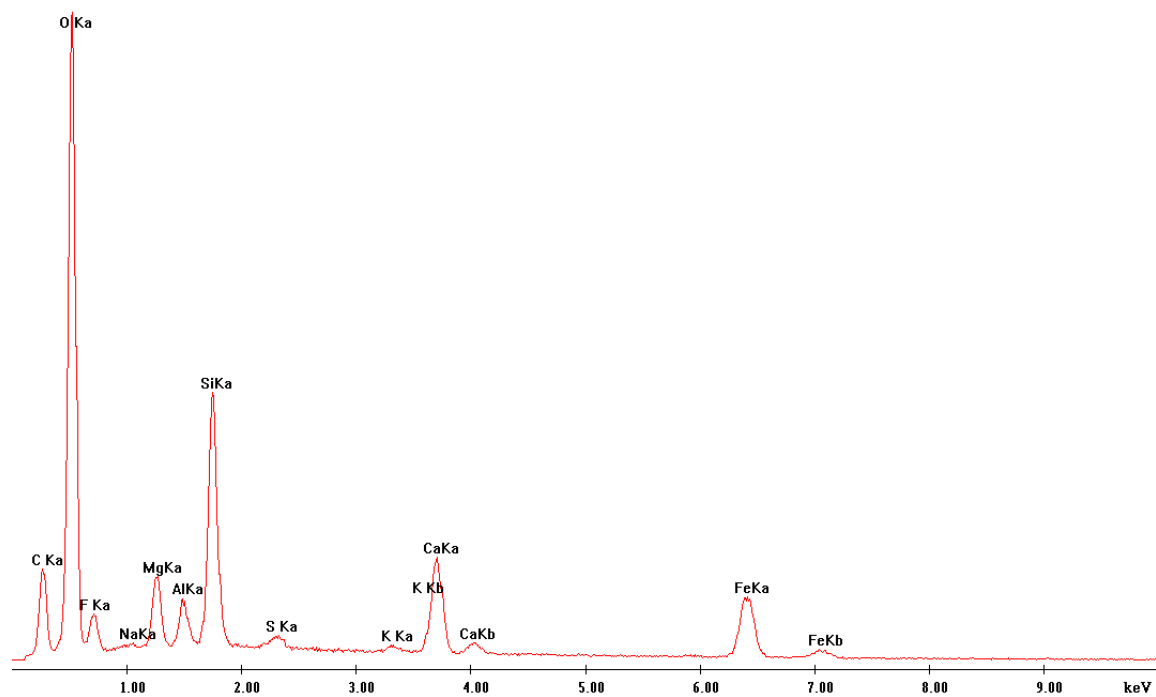
**Figure S1.** Energy dispersive spectroscopy (EDS) peaks of silica cement (Si) (a), quartz (Qtz) (b) and calcite grains (Ca) (c), from Figure 9a.

Label A: TS112



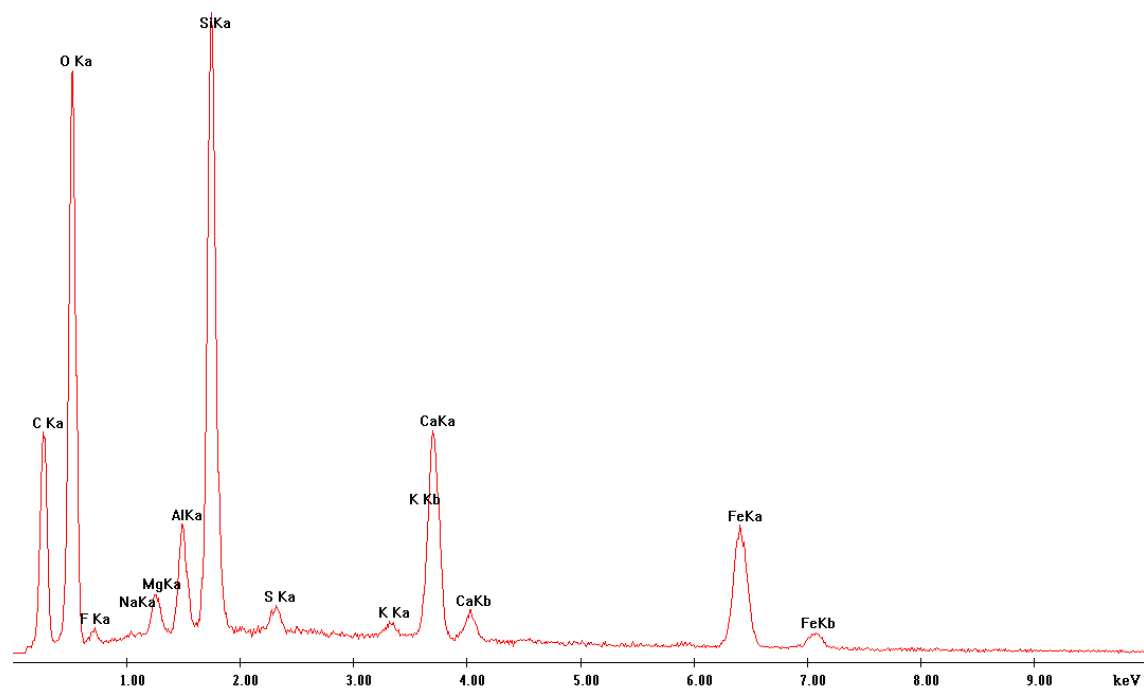
(a)

Label A: TS112



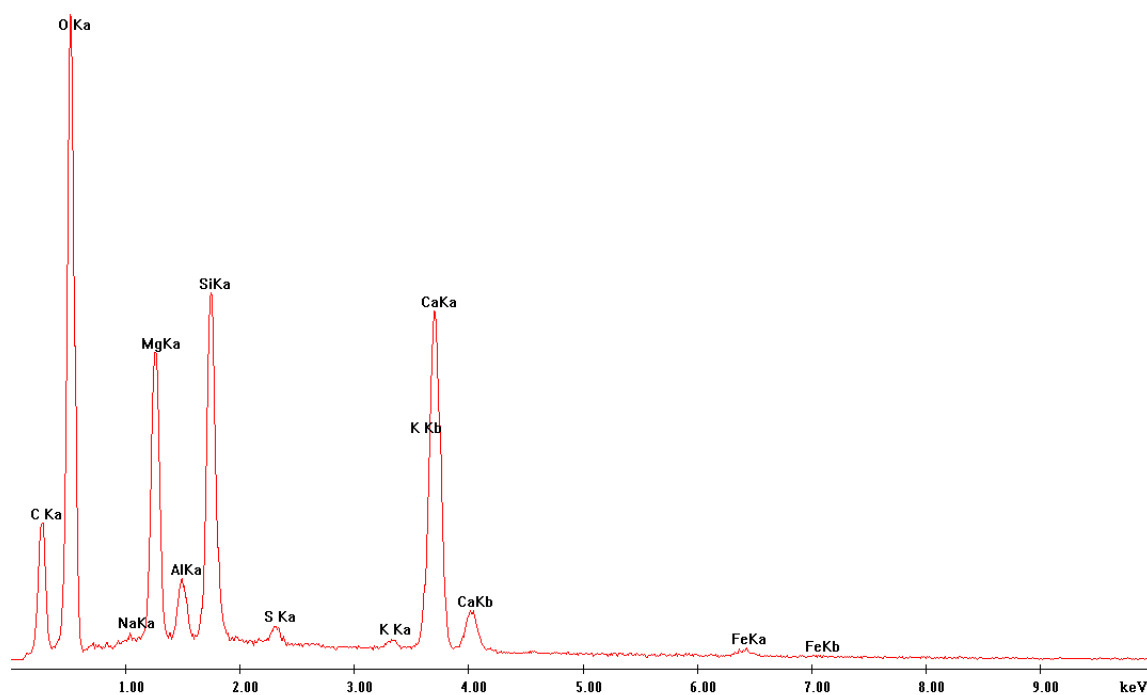
(b)

Label A: TS112



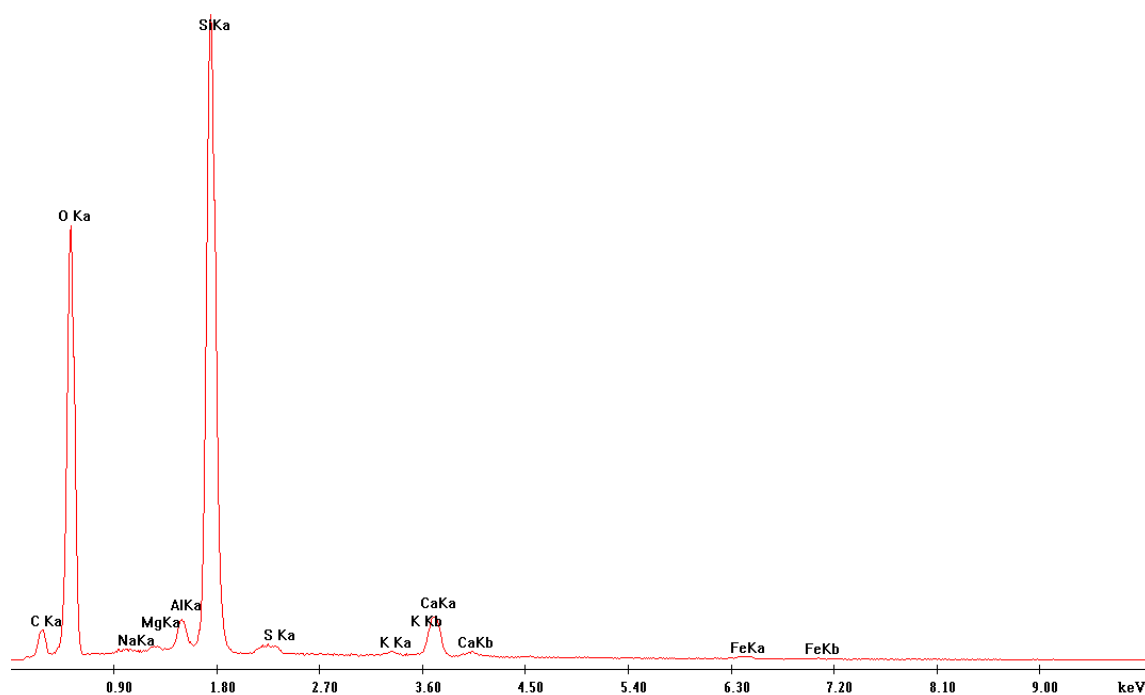
(c)

Label A: TS112



(d)

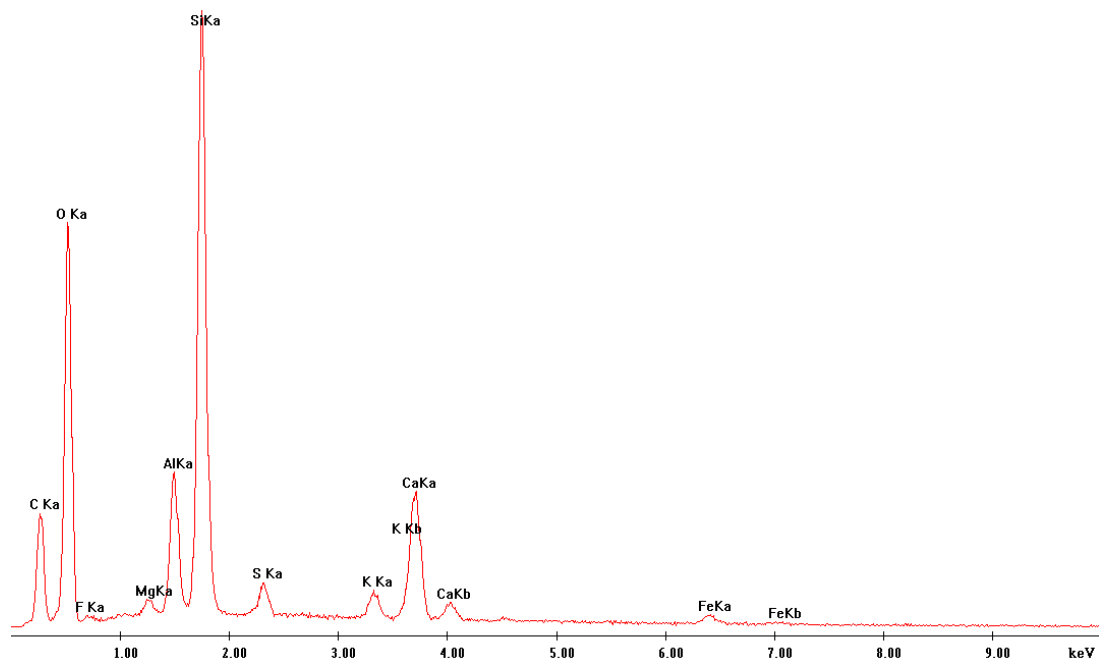
Label A: TS112



(e)

**Figure S2.** Energy dispersive spectroscopy (EDS) peaks of muscovite (Mus) (a), ankerite (Ank) (b), likely organic matter (OM) (c), dolomite (Dol) (d) and quartz (Qtz) (e) from Figure 9b.

Label A: TS112



(a)

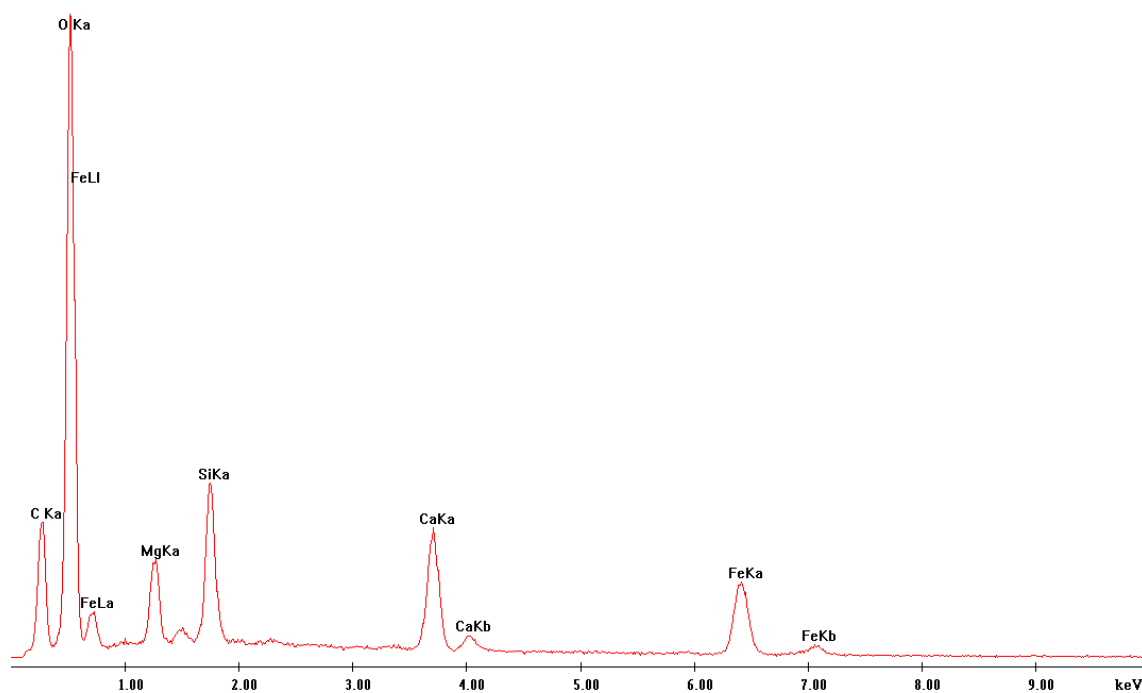
Label A: TS112



(b)

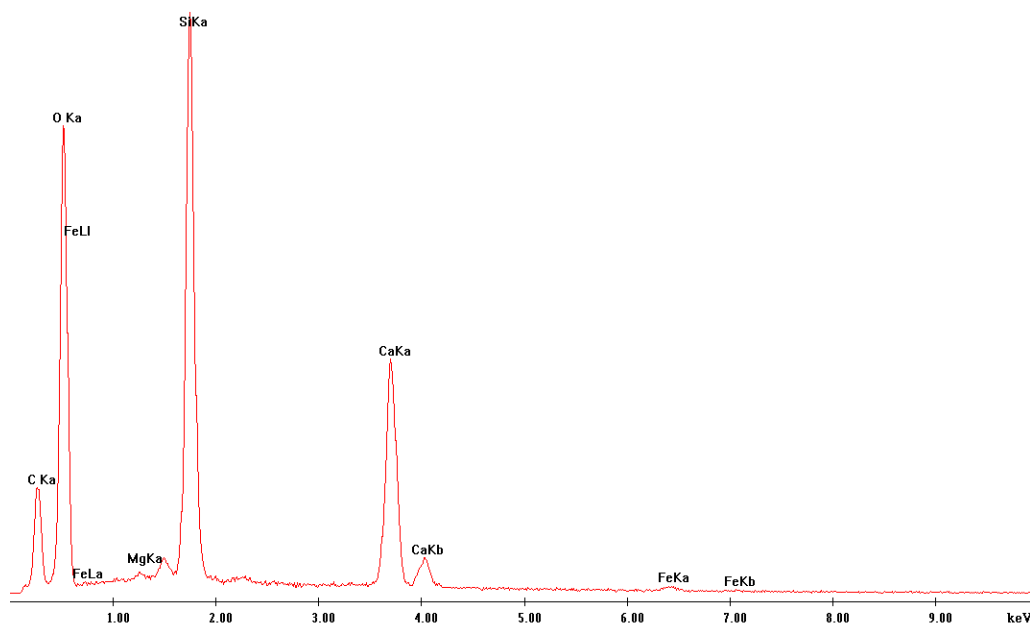
**Figure S3.** Energy dispersive spectroscopy (EDS) peaks of illite - smectite (Ill-Sme) (a,b) from Figure 10a.

Label A:



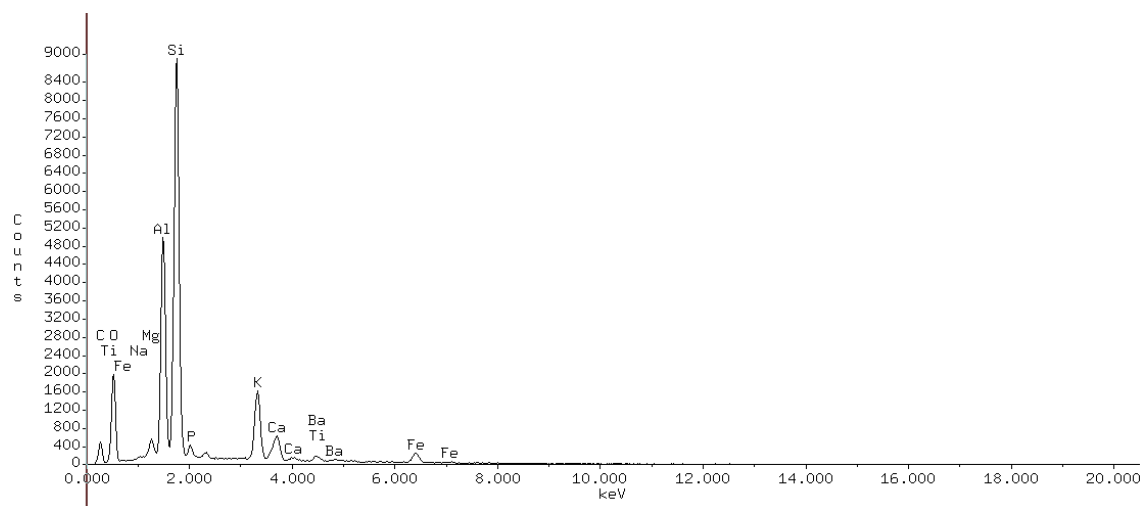
(a)

Label A:

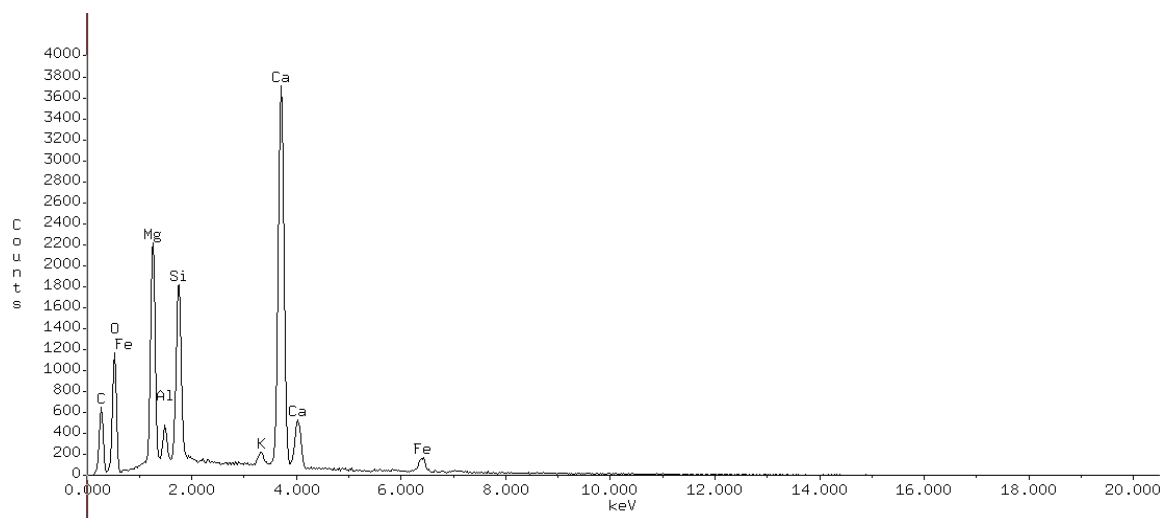


(b)

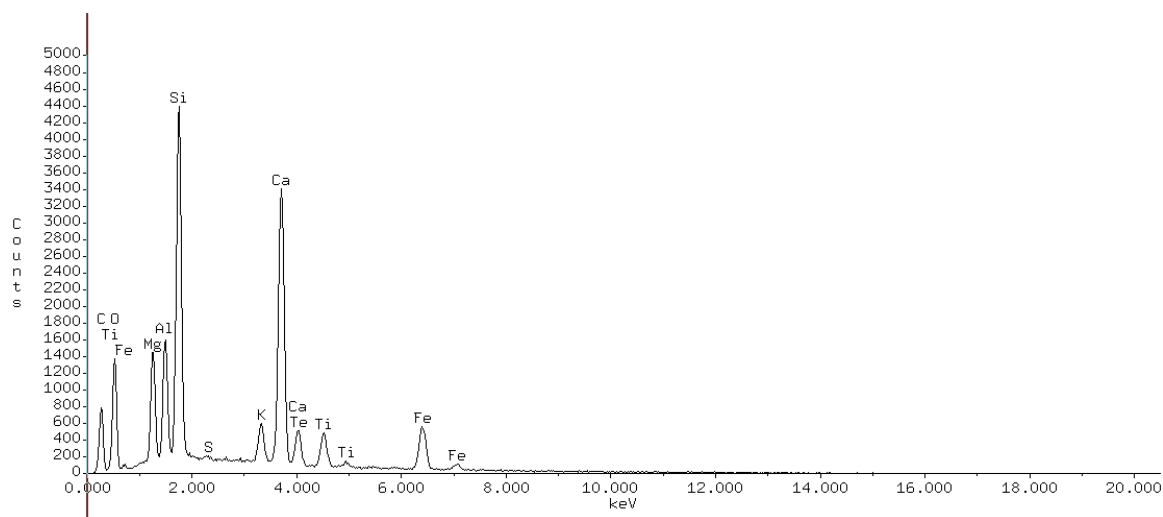
**Figure S4.** Energy dispersive spectroscopy (EDS) peaks of ankerite (Ank) (a) and silica cement (Si) (b) from Figure 10b.



(a)

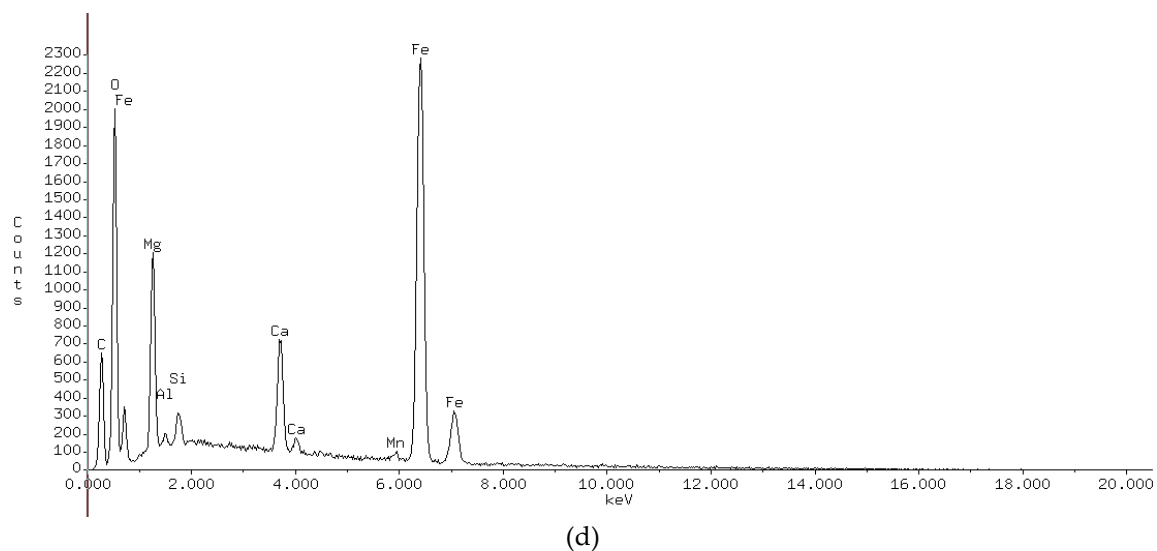


(b)



(c)





**Figure S5.** Energy dispersive spectroscopy (EDS) peaks of illite (Ill) (a), dolomite (Dol) (b), ankerite-siderite (Ank-Sid) (c) and siderite (Sid) (d) from sample 11a.