

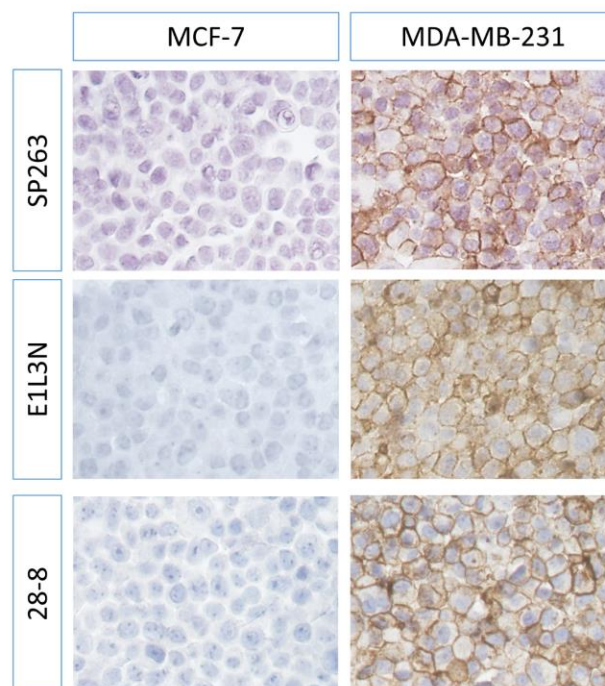
**Supplementary Table 1:** Distribution of the molecular subtypes of breast cancer cases

Type	Luminal A	Luminal B	Her 2	TN
<b>Number of Patients</b>	25 (36)*	22 (32)	10 (14)	12 (17)

\* number in brackets represents the percentage of cases

**Supplementary Table 2:** Conditions used for manual Immunohistochemical detection of PD-L1 on FFPE tissues

Antibody	Antigen Retrieval		Antibody diluent	Antibody dilution	Incubation	Secondary antibody
	Solution	Conditions				
<b>E1L3N</b>	CC1	121°C /6 min	CS (#8114)	1:200	OVN	Envision G/2
<b>28-8</b>		110 C/ 10 min	0.1% BSA	1:500		Envision Flex



**Figure 1 Performance of the three anti-PD-L1 antibodies in FFPE sections.** Representative images of immunohistochemical detection for PD-L1 (brown) using three different antibodies in sections of FFPE sections of positive (MDA-MB-231) and negative (MCF7) controls examined under a light microscope at x400 magnification.

Supplementary figure 1