

Article

# Drive Mechanisms of Soil Quality Changes in Peri-urban Areas

Hongbin Liu <sup>1,2</sup> and Jie Lyu <sup>3,\*</sup>

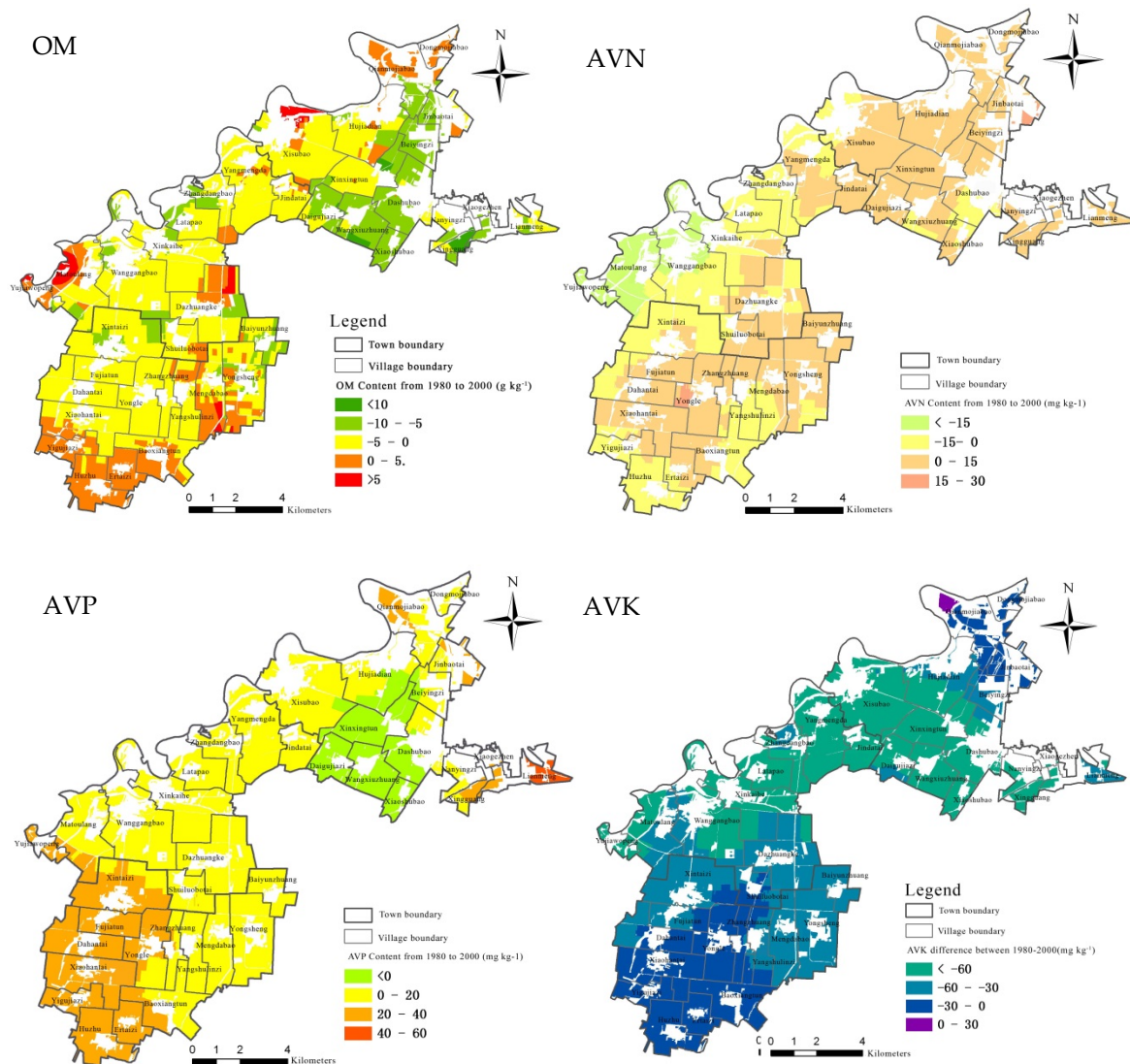
<sup>1</sup> College of Land and Environment, Shenyang Agricultural University, Shenyang 110866, China;

liuhongbinsy@syau.edu.cn

<sup>2</sup> College of Economic and Management, Shenyang Agricultural University, Shenyang 110866, China

<sup>3</sup> College of Public Administration, Nanjing Agricultural University, Nanjing 210095, China

\* Correspondence: jieluesy@syau.edu.cn; Tel.: +86-24-88487008



**Figure S1.** The spatial variation of SQ from 1980 to 2000

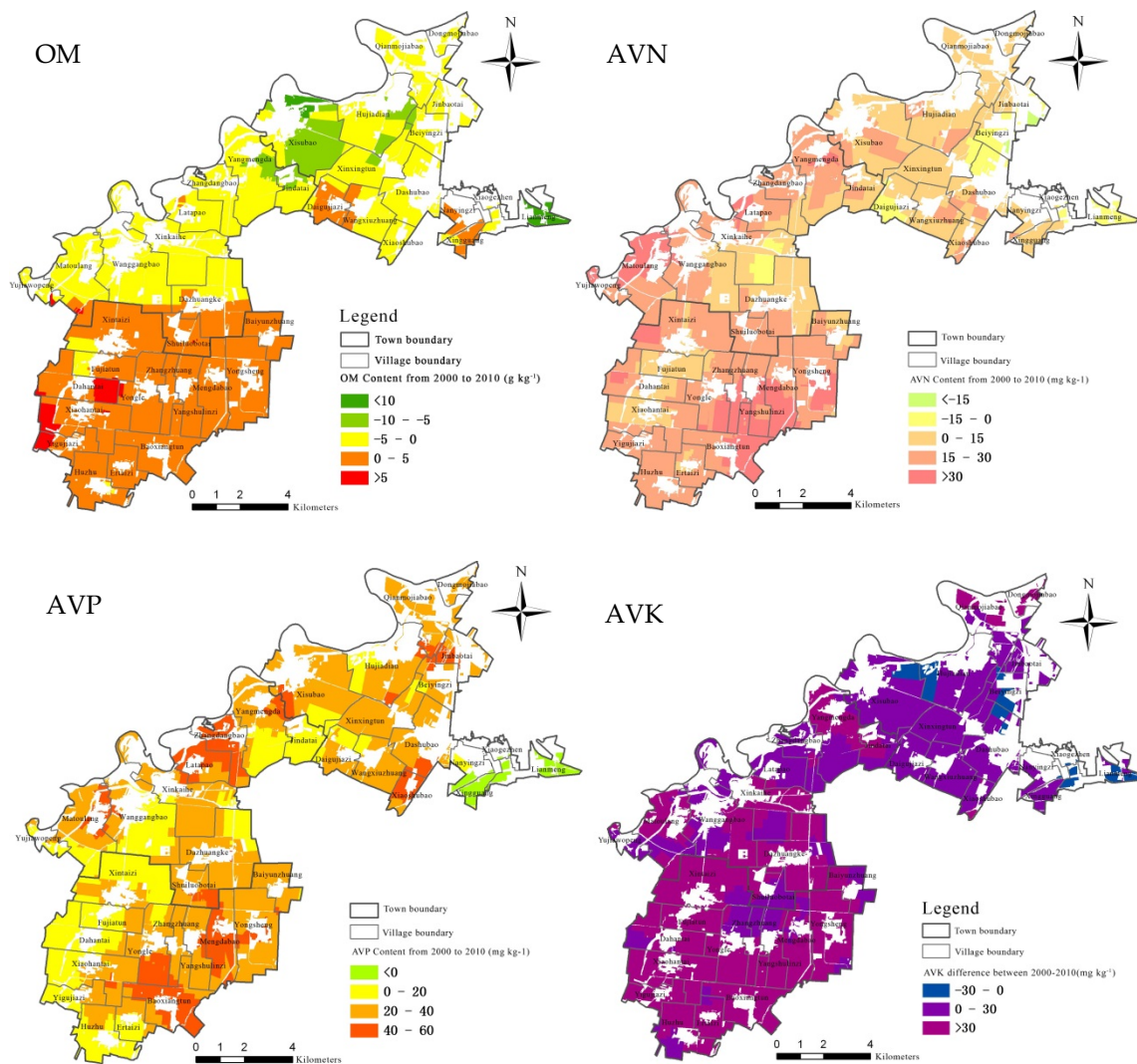


Figure S2. The spatial variation of SQ from 2000 to 2010.