

Supplementary Materials: Comparison of SWAT and GWLF model simulation performance in humid south and semi-arid north of China

Zuoda Qi ¹, Gelin Kang ¹, Chunli Chu ^{1,*}, Yu Qiu ¹, Ze Xu ² and Yuqiu Wang ^{1, **}

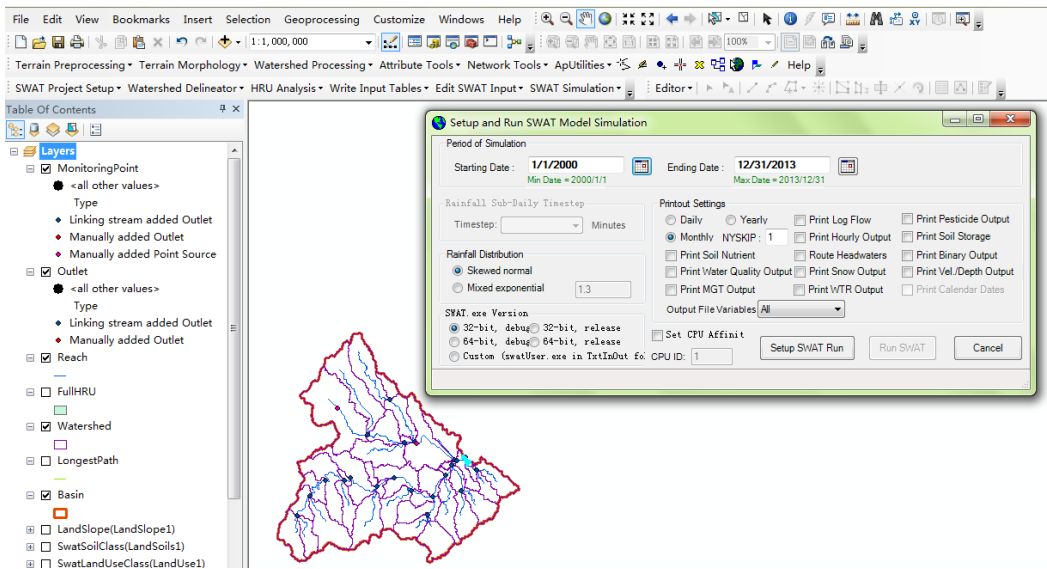


Figure S1. The interface of the SWAT model

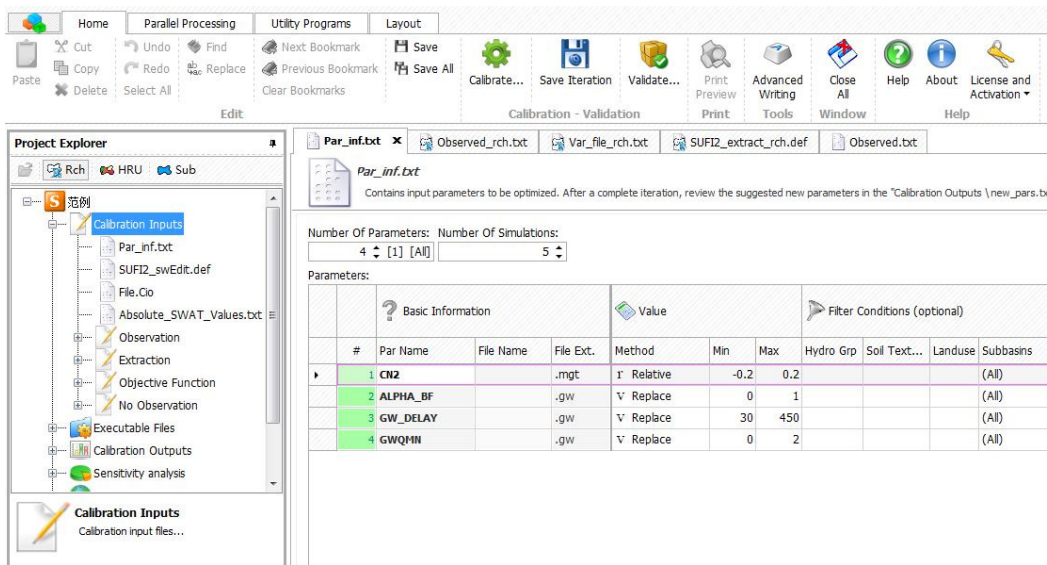


Figure S2. The interface of the SWAT-CUP

Microsoft Excel - ReNuMa_v2 2.2.xls

文件(F) 编辑(E) 视图(V) 插入(I) 格式(O) 工具(T) 数据(D) 窗口(W) 帮助(H)

30 85% Arial 10 B I U

	A	B	C	D	E	F	G	H	I	J	K	
1	Simulation Period						ReNuMa 2.0 Options					
2	initial year				2001		annual or monthly deposition (a/m)				a	
3	initial month				1		(calibration/Bayesian analysis only) annual, monthly, or daily (a/m/d)				m	
4	number of years of simulation				9		b worksheet name (blank for original curve number method)					
5							annual land areas worksheet name					
6	Simulation Method						ReNuMa 2.2 Options					
7	spin-up period (0 for no spin-up simulation)				1		GWLF version (1 or 2)				2	
8	repeat spin-up data (y/n)				n							
9	use trajectory (y/n)				n							
10	(uncertainty/Bayesian analysis only) number of realizations				100							
11	(sensitivity analysis only) annual or monthly (a/m)				a							
12	(sensitivity analysis only) specific year (blank for all years)											
13	(sensitivity analysis only) specific month (blank for all months)											
14												
15	Reporting											
16	annual report (y/n)				y							
17	monthly report (y/n)				y							
18	daily report (y/n)				n							
19	report by category 1 (y/n)				y							
20	report by category 2 (y/n)				y							
21												
22	Calculations											
23	use latitude to calculate daylength (y/n)				y							
24	(if using latitude) latitude in degrees				30							
25												
26	Input / Output											
27	default drive name				C:\							
28	default folder name				WorkReNuMa\							
29	batch mode (y/n)				n							
30												
31	single run (non-batch mode) simulation options											
32	transport parameter worksheet name				transport							
33	nutrient parameter worksheet name				nutrient							
34	read weather from text file or worksheet (t/s)				s							
35	(if reading weather from text file) weather data file name				weather.txt							
36	(if from worksheet) weather workbook name (blank for this workbook)											
37	(if from worksheet) weather worksheet name				weather							
38	annual output worksheet name				annual							
39	monthly output worksheet name				monthly							
40	daily output worksheet name				daily							

Figure S3. The interface of GWLF modeling platform-ReNuMa