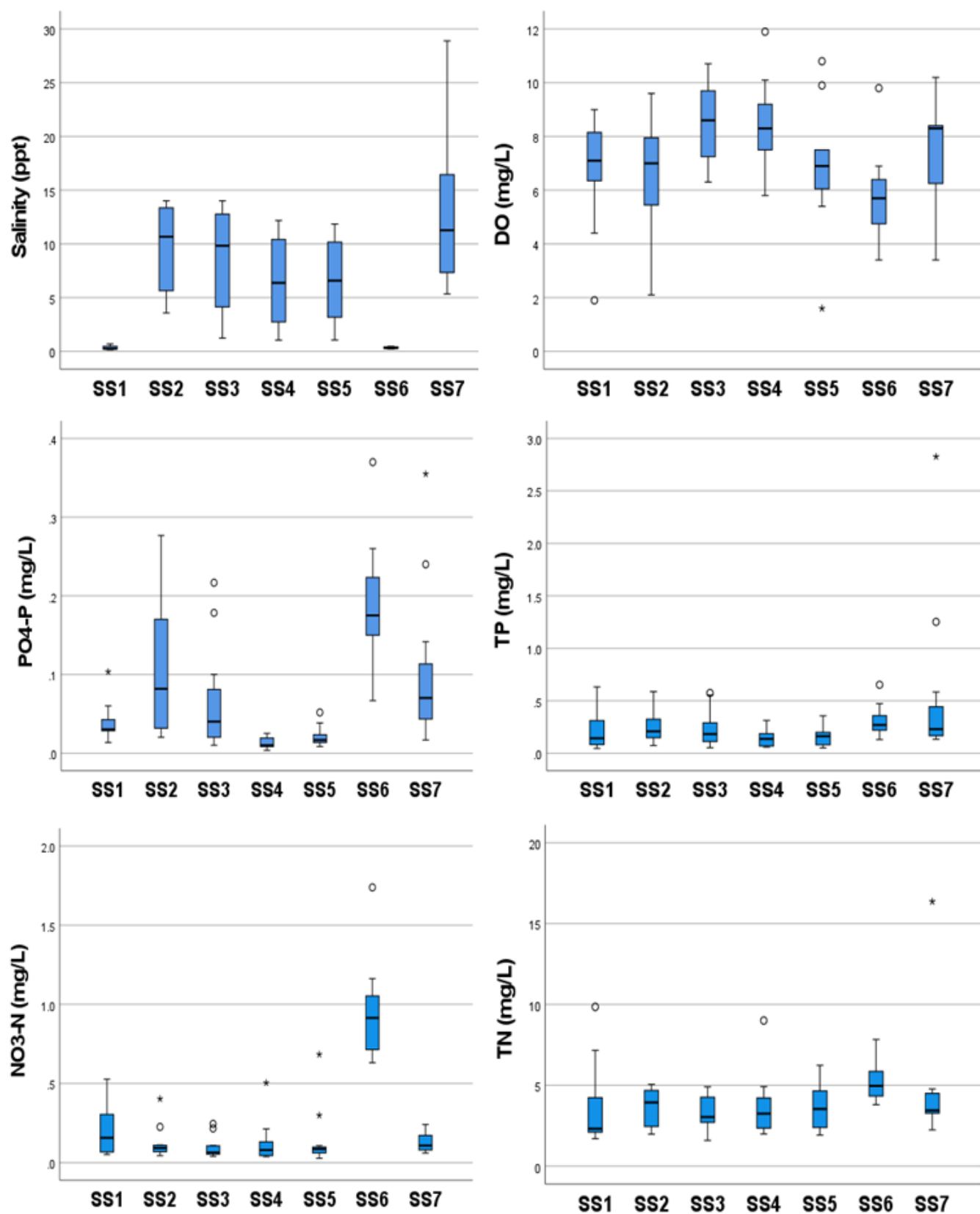
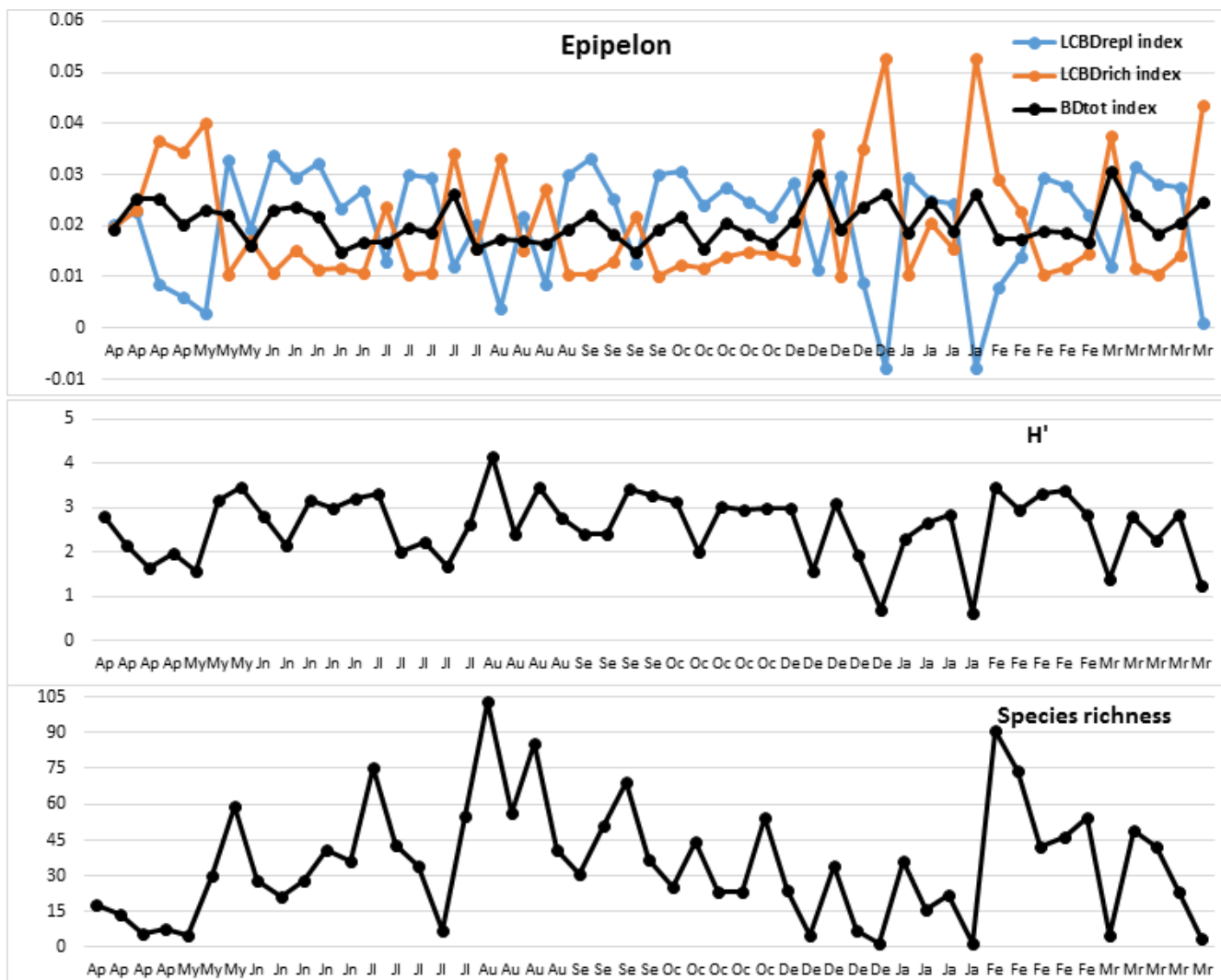


## Supplementary data

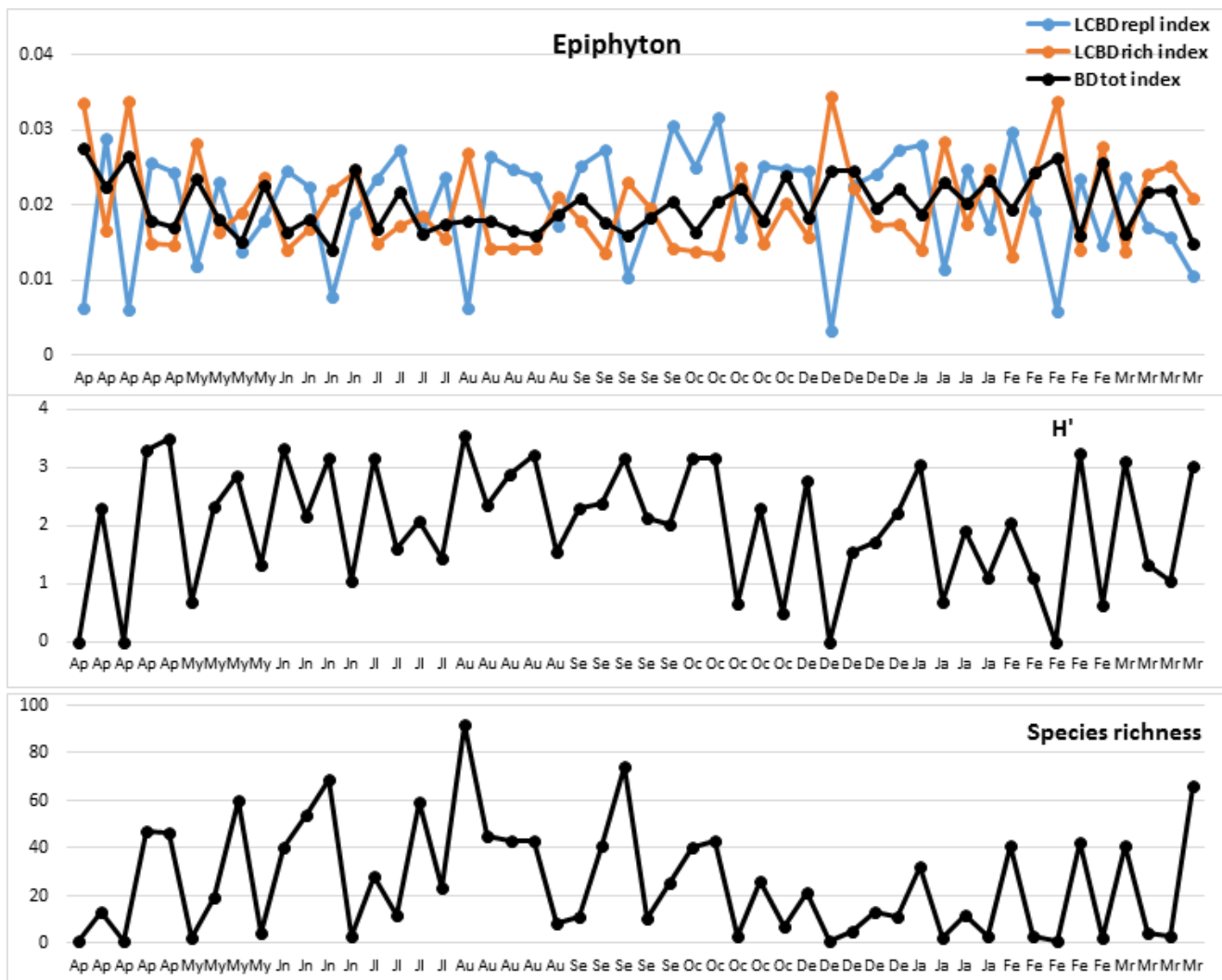
Environmental heterogeneity and salinity gradient impacted the alpha and beta diversities of diatom assemblages in a coastal delta wetland by Dalkıran & Zünbülğil-Ünsal



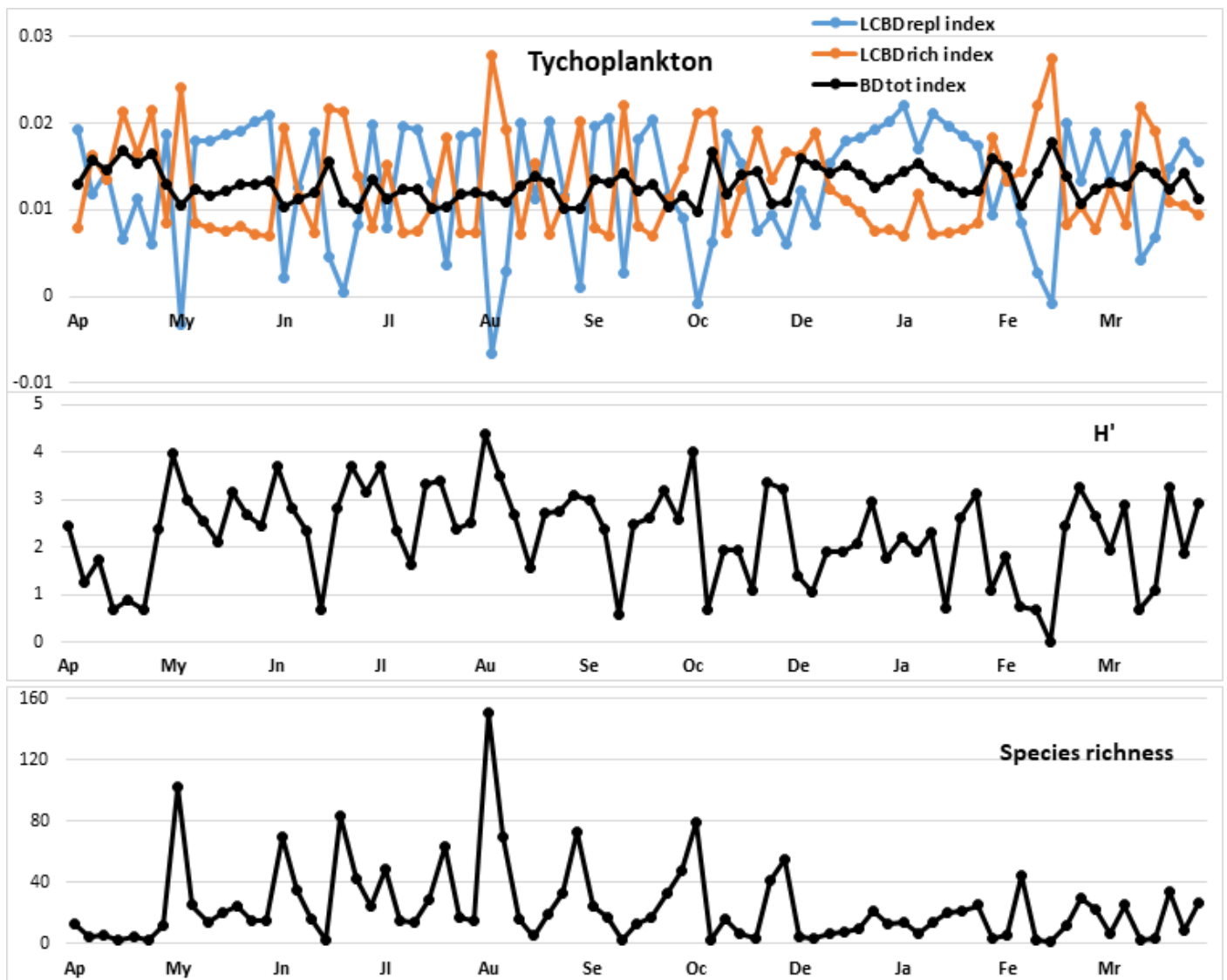
**Figure S1.** The box-plot graphics of some measured physicochemical variables.



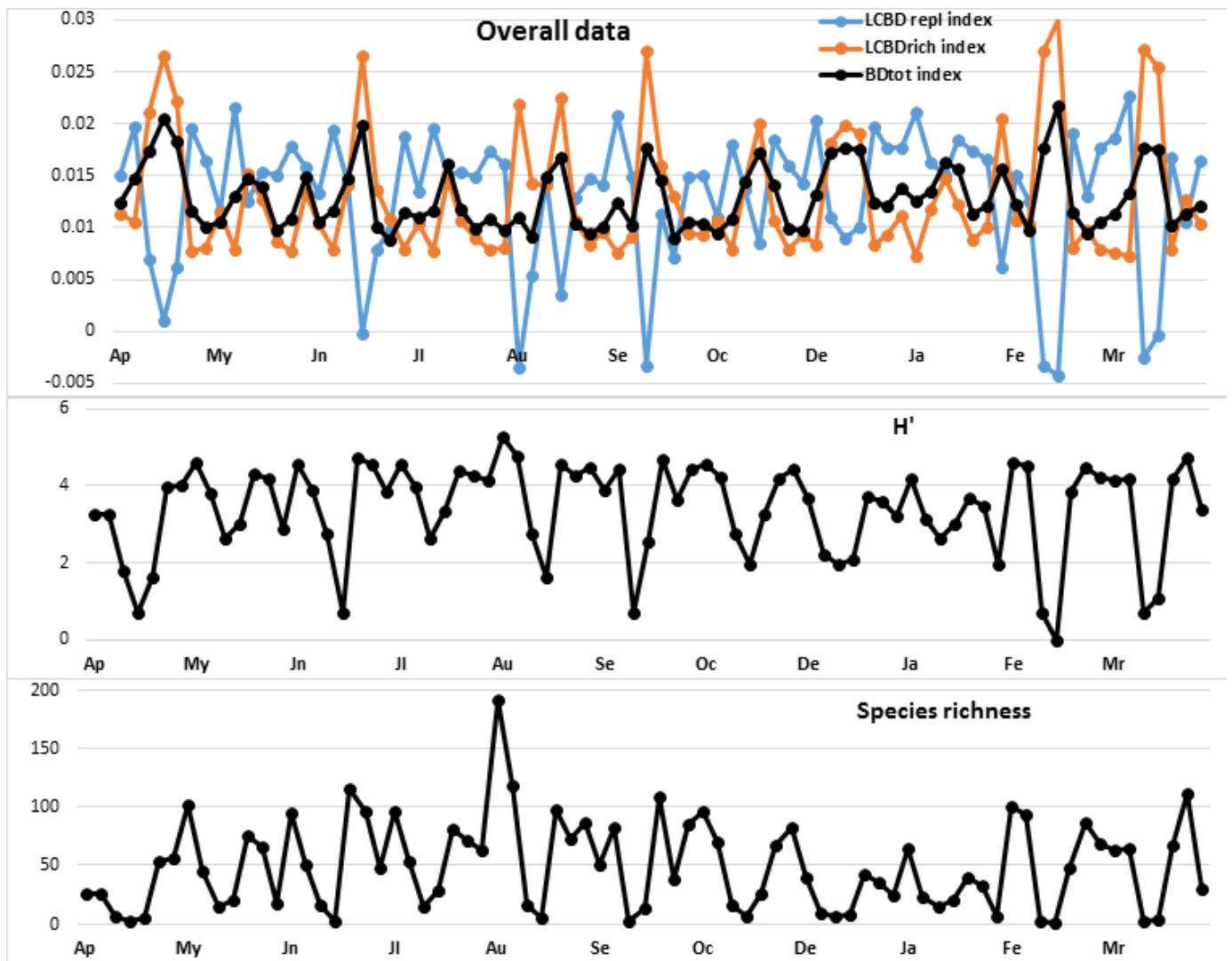
**Figure S2.** The spatial and temporal variations of species richness, alpha and beta diversity indices of epipelon samples. Alpha diversity index was estimated as relative abundance, and beta diversity indices were estimated based on presence-absence data (n: 49).



**Figure S3.** The spatial and temporal variations of species richness, alpha and beta diversity indices of epiphyton samples. Alpha diversity index was estimated as relative abundance, and beta diversity indices were estimated based on presence-absence data (n: 50).



**Figure S4.** The spatial and temporal variations of species richness, alpha and beta diversity indices of tychoplankton. Alpha diversity index was estimated as relative abundance, and beta diversity indices were estimated based on presence-absence data (n: 77).



**Figure S5.** The spatial and temporal variations of species richness, alpha and beta diversity indices of overall combined data. All diversity indices were estimated based on presence-absence data (n: 77).

**Table S1.** Species richness and diversity results according to study sites based overall combined data. All diversity indices were estimated according to presence absence data.

Species Richness				alpha diversity	beta diversity			
	n <sub>samp</sub>	n <sub>taxa</sub>	mean (min- max)	H'±Jackknife SE	LCBD <sub>repl</sub>	LCBD <sub>rich</sub>	LCBD <sub>tot</sub>	BD <sub>tot</sub>
study sites								
SS1	11	266	84.09 (26-192)	5.280±0.162	0.165	0.181	0.346	0.508
SS2	11	203	57.73 (9-118)	5.056±0.088	0.176	0.213	0.388	0.616
SS3	11	58	9.91 (2-16)	3.148±0.339	0.214	0.202	0.416	0.526
SS4	11	68	10.00 (1-29)	2.16±1.289	0.201	0.271	0.472	0.884
SS5	11	227	64.18 (5-115)	5.147±0.083	0.165	0.219	0.384	0.607
SS6	11	210	66.36 (32 - 112)	5.046±0.095	0.195	0.148	0.343	0.511
SS7	11	192	51.91 (7-87)	4.987±0.085	0.174	0.219	0.393	0.619
All samp. indices:	77	357	49.17 (1-192)	5.372±0.051	0.159	0.268	0.426	0.722

**Table S2.** Results of spearman rank correlation analysis between some physicochemical variables and diversity indices based overall combined data. All diversity indices were estimated according to presence absence data (\*\*Correlation is significant at the 0.01 level, 2-tailed)

	BDtot index	LCBDrep index	LCBDrich index	H' index	Sp. Rich.
BDtot index			0.610**	-0.902**	
LCBDrep index		1			
LCBDrich index	0.610**	-0.836**	1	-0.561**	-0.561**
H' index	-0.902**		-0.561**	1	-0.902**
Sp. Rich.	-0.902**		-0.561**	1**	1
DO	0.400**		0.326**	-0.421**	-0.421**
T	-0.380**			0.329**	0.329**
PO <sub>4</sub> P	-0.438**	0.305**	-0.248**	0.363**	0.363**
TP	-0.309**			0.258**	0.258**
NO <sub>3</sub> -N		0.322**	-0.320**		
TN	-0.372**			0.328**	0.328**