

Article

Fixed-Bed Studies of Landfill Leachate Treatment Using Chitosan-Coated Carbon Composite

Fatima Batool ^{1,†}, Tonni Agustiono Kurniawan ^{1,2,*}, Ayesha Mohyuddin ¹, Mohd Hafiz Dzarfan Othman ³, Abdelkader Anouzla ⁴, Christia Meidiana ⁵, Hui Hwang Goh ⁶ and Kit Wayne Chew ⁷

¹ Department of Chemistry, School of Science, University of Management and Technology, Lahore 54770, Pakistan

² College of Environment and Ecology, Xiamen University, Xiamen 361102, China

³ Advanced Membrane Technology Research Centre (AMTEC), Faculty of Chemical and Energy Engineering, Universiti Teknologi Malaysia (UTM), Skudai 81310, Johor Bahru, Malaysia

⁴ Department of Process Engineering and Environment, Faculty of Science and Technology, University Hassan II of Casablanca, Mohammedia 28830, Morocco

⁵ Department of Regional and Urban Planning, Faculty of Engineering, Brawijaya University, Malang 65145, Indonesia

⁶ School of Electrical Engineering, Guangxi University, Nanning 530004, China

⁷ School of Chemistry, Chemical Engineering and Biotechnology, Nanyang Technological University (NTU), Singapore 637459, Singapore

* Correspondence: tonni@xmu.edu.cn

† The 1st and the 2nd authors equally contribute to this work and mutually share the first authorship.

Citation: Batool, F.; Kurniawan, T.A.; Mohyuddin, A.; Othman, M.H.D.; Anouzla, A.; Meidiana, C.; Goh, H.H.; Chew, K.W. Fixed-Bed Studies of Landfill Leachate Treatment Using Chitosan-Coated Carbon Composite. *Water* **2023**, *15*, x. <https://doi.org/10.3390/xxxxx>

Academic Editor: Chengyun Zhou

Received: 20 May 2023

Revised: 7 June 2023

Accepted: 14 June 2023

Published: 16 June 2023



Copyright: © 2023 by the authors. Submitted for possible open access publication under the terms and conditions of the Creative Commons Attribution (CC BY) license (<https://creativecommons.org/licenses/by/4.0/>).

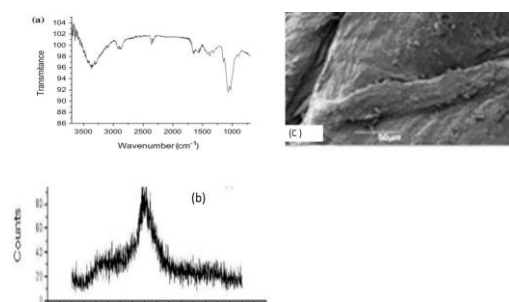


Figure S1. Characterization data of composite before column studies

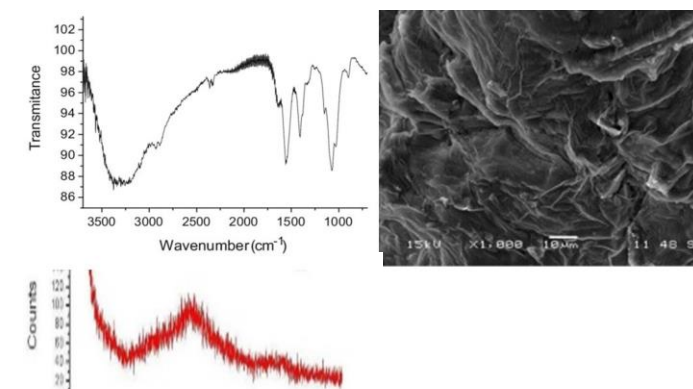


Figure S2. Characterization data of composite after column studies