

Article

Modeling Reference Crop Evapotranspiration Using Support Vector Machine (SVM) and Extreme Learning Machine (ELM) in Region IV-A, Philippines

Allan T. Tejada, Jr.^{1,*}, Victor B. Ella^{2,*} , Rubenito M. Lampayan² and Consorcia E. Reaño³

¹ Interdisciplinary Studies Center for Water, School of Environmental Science and Management, University of the Philippines Los Baños, Los Baños 4031, Philippines

² Land and Water Resources Engineering Division, Institute of Agricultural and Biosystems Engineering, College of Engineering and Agro-Industrial Technology, University of the Philippines Los Baños, Los Baños 4031, Philippines; rmlampayan@up.edu.ph

³ Institute of Crop Science, College of Agriculture and Food Science, University of the Philippines Los Baños, Los Baños 4031, Philippines; cereano@up.edu.ph

* Correspondence: attejada@up.edu.ph (A.T.T.J.); vbella@up.edu.ph (V.B.E.)

Abstract: The need for accurate estimates of reference crop evapotranspiration (ET_o) is important in irrigation planning and design, irrigation scheduling, reservoir management among other applications. ET_o can be accurately determined using the internationally accepted FAO Penman–Monteith (FAO-56 PM) equation. However, this requires numerous observed data, including solar radiation, air temperature, relative humidity, and wind speed, which in most cases are unavailable, particularly in developing countries such as the Philippines. This study developed models based on Support Vector Machines (SVMs) and Extreme Learning Machines (ELMs) for the estimation of daily ET_o using different input combinations of meteorological data in Region IV-A, Philippines. The performance of machine learning models was compared with the different established alternative empirical models for ET_o. The results show that the SVM and ELM models, with at least T_{max}, T_{min}, and R_s as inputs, provide the best daily ET_o estimates. The accuracy of machine learning models was also found to be superior compared to the empirical models given with same input requirements. In general, SVM and ELM models showed similar modeling performance, although the former showed lower run time than the latter.

Keywords: reference crop evapotranspiration; machine learning; ELM; SVM



Citation: Tejada, A.T., Jr.; Ella, V.B.; Lampayan, R.M.; Reaño, C.E. Modeling Reference Crop Evapotranspiration Using Support Vector Machine (SVM) and Extreme Learning Machine (ELM) in Region IV-A, Philippines. *Water* **2022**, *14*, 754. <https://doi.org/10.3390/w14050754>

Academic Editors: Zheng Duan and Babak Mohammadi

Received: 17 January 2022

Accepted: 24 February 2022

Published: 26 February 2022

Publisher's Note: MDPI stays neutral with regard to jurisdictional claims in published maps and institutional affiliations.



Copyright: © 2022 by the authors. Licensee MDPI, Basel, Switzerland. This article is an open access article distributed under the terms and conditions of the Creative Commons Attribution (CC BY) license (<https://creativecommons.org/licenses/by/4.0/>).

1. Introduction

The simultaneous occurrence of, and the difficulty of separately measuring, evaporation and transpirations gives rise to the concept of evapotranspiration [1]. Both evaporation and transpiration are influenced by factors such as weather parameters, crop characteristics, management, and environmental factors. Due to the complexity of the concept, distinctions are made among reference crop evapotranspiration (ET_o), crop evapotranspiration under standard conditions (ET_c) and crop evapotranspiration under non-standard conditions (ET_c-adj). The reference crop evapotranspiration, ET_o, which is the focus of this study, refers to the evapotranspiration rate from a reference surface, defined as a hypothetical grass reference crop with a height of 0.12 m, a fixed surface resistance of 70 s/m, and an albedo of 0.23, which is actively growing, well-watered, and completely shades the ground [1]. The concept of ET_o was introduced to study the evaporative demand of the atmosphere independently of crop type, crop development, and management practices.

ET_o is one of the most important agrometeorological inputs in the estimation of the irrigation water requirements needed for irrigation system planning, design, and operation [2–4]. Based on the Philippine Agricultural Engineering Standards [3] on the

Determination of Irrigation Water Requirements, the calculation of ETo is a preliminary step in estimating the crop water requirements for the development of climate- and site-specific cropping calendars. Knowledge of ETo is also needed in the development of hydrologic models for streamflow estimation and flood inundation [5–7], reservoir design and operation [8,9], climate change studies [10–12], and drought severity analyses [13,14]. Hence, the importance of accurate methods for estimating ETo can never be overemphasized.

In general, ETo can be directly measured using the simple water balance derived from equipment such as a lysimeter. However, this method is extensive, labor-intensive, and time-consuming for practical applications [15]. In most cases, ETo is determined using the internationally accepted FAO Penman–Monteith (FAO-56 PM) equation [1]. Since FAO-56 PM requires numerous items of measured meteorological data that are mostly unavailable in developing countries such as the Philippines, empirical equations with reduced data requirements are usually utilized [16]. These equations are usually based on individual or combinations of available meteorological data, such as the temperature-based Hargreaves–Samani [17] equation, the temperature–radiation-based Makkink [18] and Priestley–Taylor [19] equations, the temperature–radiation and wind speed-based Matt–Shuttleworth [20] equation, and the temperature–radiation and relative humidity-based Turc [21] equation. Although these empirical models are simple in terms of data inputs and computational procedures, their usage is observed to be site-specific, or variable according to the climatic conditions of the places where they are developed, and in some cases, they provide unsatisfactory results [22–24]. Furthermore, these simplified empirical models are mostly suited to estimating ETo on a weekly or monthly basis, but are less suitable for daily ETo estimation [25].

Advances in computation have led to the introduction of machine learning algorithms in accurate daily ETo estimation. The term machine learning was coined and first defined in a study on the International Business Machines (IBM) corporation as a field of study that gives computers the ability to learn without being explicitly programmed [26]. The popularity of machine learning in recent years can be attributed to the incorporation of probability and statistics into the algorithm that deals with traditional fixed rule-based models, which require manual input [27]. Machine learning models, in general, are black boxes in nature, but several studies conducted have shown their consistent reliability and accuracy in ETo estimation applications compared to other established empirical models [15,22,23,28–30]. Among these machine learning models, the Support Vector Machine (SVM) and Extreme Learning Machine (ELM) have generally exhibited better prediction accuracy in ETo estimations in various studies worldwide, such as in India [31], China [32,33], and Spain [34]. The performance of machine learning models relies on the proper estimation of hyperparameters [35], and cross-validations and resampling, along with grid search, are good ways to simultaneously optimize these hyperparameters [36,37]. The application of grid searches in machine learning model development for Eto estimation can be observed in the works of Bellido-Jiménez et al. [34], Seifi and Riahi [24], Patil and Deka [38], and Wen et al. [39].

Data-driven agricultural techniques, known collectively as precision agriculture, offer a potential way to increase global food production because of their more efficient and contextually appropriate agriculture management actions [40–42]. The recent expansion of data-driven farming is due to advances in three key areas: (1) *data generation* from sources such as field sensors and satellites, (2) *data processing and predictive analytics* using big data stacks, machine learning and deep learning models, and (3) *human–computer interactions* that create and improve the usability of insights and models [43]. Data-driven agricultural technologies mostly require the monitoring of accurate meteorological variables such as ETo [44]. For the past few decades, there has been an emerging trend of using machine learning models for the estimation of important variables, especially in areas where these data are insufficient, unavailable, or inaccessible [45].

To date, no study exists in the published peer-reviewed literature that explores the application of SVM and ELM models in the estimation of daily ETo under the conditions of the Philippines. The general objective of this study is to estimate daily ETo using SVM

and ELM, with different input combinations of meteorological data collected at weather stations in Region IV-A, Philippines. Specifically, this study seeks to compare the accuracy of daily ETo estimation in the region (1) across the studied empirical models, (2) across machine learning models, i.e., across input combinations and between SVM and ELM, and (3) between the empirical models and machine learning models.

2. Materials and Methods

2.1. Study Area

Figure 1 shows the weather stations in Region IV-A, a region in the Philippines considered in this study. Twenty years of observed daily data on precipitation (P , mm), air temperature (T_{\max} and T_{\min} , °C), dew point temperature (T_{dew} , °C), relative humidity (RH, %) and wind speed (U_z , m/s) were acquired from seven DOST-PAGASA weather stations in Region IV-A through the agency's online data acquisition platform ClimaDatPh. The requested data underwent a series of reliable quality control procedures and subsequent archiving, as described in the paper of Villafuerte et al. [46]. Based on the Modified Corona Climate Classification of the Philippines, the region can be divided into three zones: Type I, with a pronounced dry season from November to April, and wet during the rest of the year, which includes the stations in UPLB, Sangley Point, and Ambulong; Type III, with a relatively dry season from November to April, and wet during the rest of the year, which includes the station in Tanay; and lastly, Type IV is characterized with more or less even rainfall throughout the year, and it includes the stations in Infanta, Tayabas and Alabat. Table 1 shows the mean annual values of meteorological data per station.

Solar climatic variables in the region are scarce. Out of seven DOST-PAGASA stations in the region, only the UPLB station has available ground-based solar radiation data (R_s , MJ/m²/day), with temporal records from 1977 to 2011 (35 years). For this reason, daily R_s data from the Goddard Earth Observing System (GEOS) reanalysis datasets that can be accessed through the National Aeronautics and Space Administration Prediction of Worldwide Energy Resource (NASA POWER) website were used, given their relative consistency with the R_s ground observations in the region [47]. Numerous publications have also proven the consistency of NASA-POWER R_s values with the ground observations in many areas around the world [48–51].

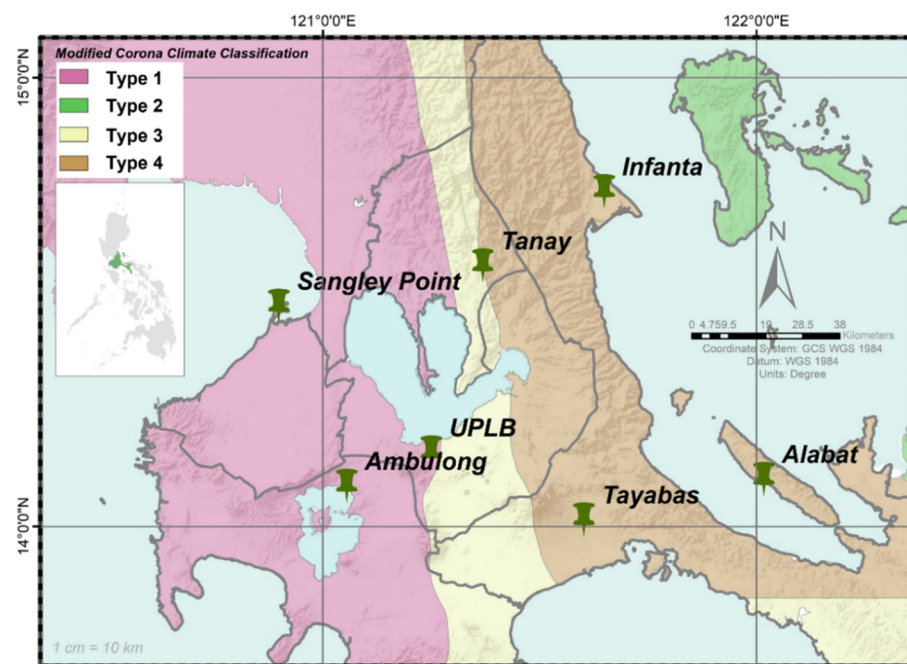


Figure 1. DOST-PAGASA weather stations considered in this study.

Table 1. Temporal coverage of records and annual mean values of meteorological data of seven stations in Region IV-A.

Province	Station	MASL	Meterological Variable						Temporal Range	
			P	T _{max}	T _{min}	T _{dew}	RH	U _z	Dev _t	Eval
Laguna	UPLB	25	2069	31.91	25.54	24.58	80.53	2.8	1995–2009	2015–2019
Cavite	SangleyPoint	3	2089	31.83	23.12	23.84	81.63	0.94	1984–1998	1999–2003
	Infanta	7	4171	30.58	23.63	23.79	84.35	2.01	1989–2003	2010–2014
Quezon	Alabat	5	3117	30.81	23.12	24.05	84.03	2.91	1992–2006	2012–2016
	Tayabas	158	3113	30.14	23.02	23.24	85.29	1.87	1994–2008	2015–2019
Batangas	Ambulong	11	1845	31.89	23.32	23.39	79.94	1.79	1987–2001	2015–2019
Rizal	Tanay	650	3014	30.10	23.23	20.92	89.47	3.37	2000–2014	2015–2019

Units: MASL (meters above sea level)—m, P (precipitation)—mm/year, T (temperature)—°C, RH (relative humidity)—%, U_z (wind Speed)—m/s. Notes: Dev_t—model development, Eval—model evaluation.

The datasets of each station were partitioned into two categories: (1) *model development set* for the development of machine learning models, and (2) *model evaluation set* for out-sampled validation of the calibrated and developed models. A continuous 15 years daily record ($n \sim 5475$) was used as the *model development set*, and a 5 years daily record ($n \sim 1825$) as the *model evaluation set* (Table 1).

2.2. Empirical Models for ETo Estimation

The daily ETo (mm/day), estimated using FAO-56 PM (Equation (1)), was used as the standard and reference value for the development and evaluation of the studied models.

$$ETo = \frac{0.408 \Delta (R_n - G) + \gamma \frac{900}{T + 273} U_2 (e_s - e_a)}{\Delta + \gamma (1 + 0.34 U_2)} \quad (1)$$

in which R_n is the net solar radiation (MJ/m²-day), G is the soil heat flux density (MJ/m²/day), T is the mean air temperature (°C), U_2 is the wind speed at 2 m height (m/s) converted from the wind speed measurement at 10 m height (U_{10}) using a logarithmic wind speed profile [1], e_s is the saturation vapor pressure (kPa), e_a is the actual vapor pressure (kPa), Δ is the slope of the vapor pressure curve (kPa/°C), and γ is the psychrometric constant (kPa/°C). The detailed procedures and the theory for calculation are discussed in the FAO 56 paper [1].

Five alternative empirical equations that have respective meteorological data inputs, as shown in Table 2, were also employed to compute ETo per station. Detailed descriptions of each of these empirical models can be found in the paper of Guo et al. [52].

Table 2. Empirical equations for reference evapotranspiration estimation.

ETo Model	Equation
Temperature-based (T-based)	
Hargreaves–Samani [17]	$ETo = 0.0135 C_{HS} \frac{R_a}{\lambda} (\Delta T)^{0.5} * (T_{ave} + 17.8)$
Temperature and Solar Radiation-based (TS-based)	
Makkink [18]	$ETo = 0.061 \left(\frac{\Delta}{\Delta + \gamma} \frac{R_a}{\lambda} \right) - 0.12$
Priestley–Taylor [19]	$ETo = \alpha_{PT} \left(\frac{\Delta}{\Delta + \gamma} \frac{R_a}{\lambda} - \frac{G}{\lambda} \right)$

Table 2. Cont.

ETo Model	Equation
Temperature, Solar Radiation and Wind Speed-based (TSW-based)	
Matt–Shuttleworth [20]	$ET_o = \frac{1}{\lambda} \frac{\Delta R_a + \gamma \frac{\rho_a c_a u_2}{r_c^{*50}} \left(\frac{VPD_{50}}{VPD_2} \right)}{\Delta + \gamma \left(1 + \frac{(r_s)_{50} u_2}{r_c^{*50}} \right)}$
Temperature, Solar Radiation and Relative Humidity-based (TSR-based)	
Turc [21]	$ET_o = 0.013(23.88R_s + 50) \left(\frac{T_{ave}}{T_{ave} + 15} \right) + \left(1 + \frac{50 - RH}{70} \right)$

2.3. Machine Learning Models for ETo Estimation

Figure 2 shows the general methodology of the development of SVM and ELM for the estimation of daily ETo using different available meteorological data as inputs.

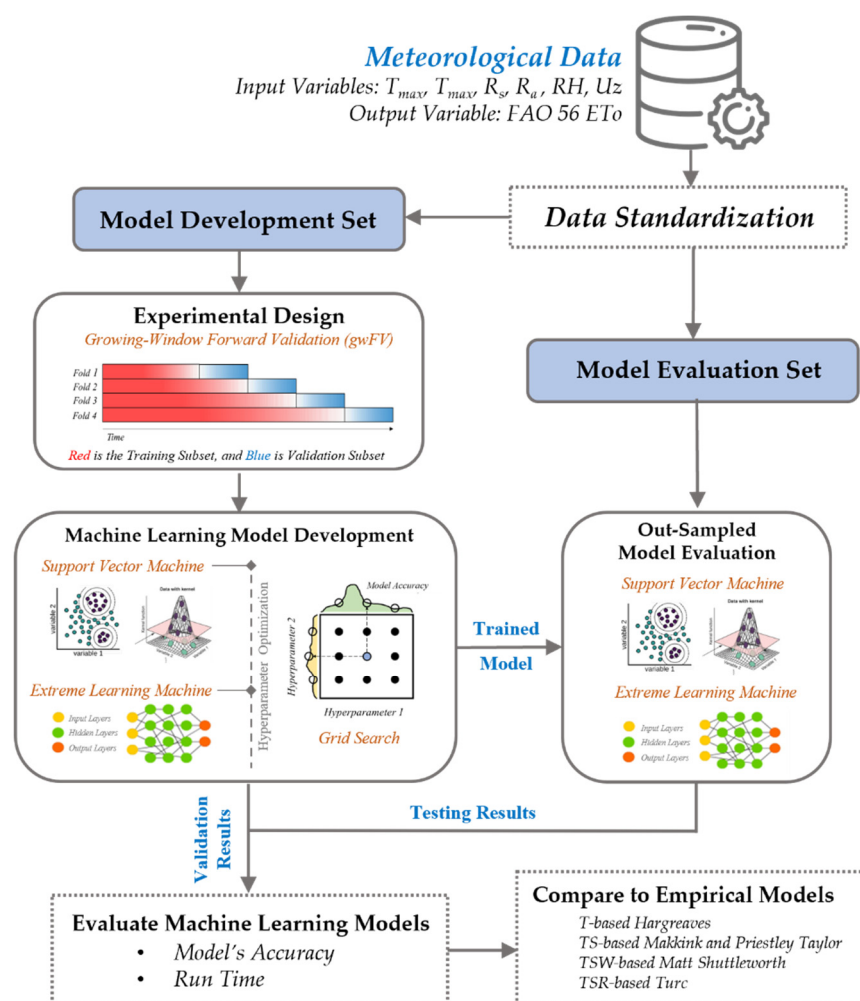


Figure 2. Methodology framework for developing SVM and ELM models for the estimation of daily ETo. Image Sources: Schematic Diagram of SVM (Rhys, 2020), ELM (van Veen and Leijnen, 2019), and grid search (Pilario et al., 2020).

2.3.1. Support Vector Machine

The SVM algorithm developed by Vapnik [53] is a supervised machine learning model for pattern recognition and data analysis, and it has been widely employed for regression and forecasting in the fields of agriculture, hydrology, meteorology, and environmental studies. The SVM model estimates the regression based on a series of kernel functions,

which can convert the original, lower-dimensional input data to a higher dimensional feature space implicitly [22,23]. SVM works by transforming the input vector into a feature space and maps the relationship with the output vector. In general, the SVM can be expressed mathematically as:

$$Y = w\phi(X) + b \quad (2)$$

in which Y is the output vector, w is the weight vector, ϕ is the kernel function, X is the input vector, and b is the bias term. The weight factor w and bias term b are estimated by minimizing the loss function as:

$$0.5 \|w\|^2 + C \frac{1}{2} \sum_{i=1}^n L_{\epsilon}(y_{\text{predicted}}, y_{\text{actual}}) \quad (3)$$

$$L_{\epsilon}(y_{\text{predicted}}, y_{\text{actual}}) = f(x) = \begin{cases} 0, & \text{if } |y_{\text{predicted}} - y_{\text{actual}}| < \epsilon \\ |y_{\text{predicted}} - y_{\text{actual}}| - \epsilon, & \text{otherwise} \end{cases} \quad (4)$$

where the term $0.5 \|w\|^2$ is the regularization term, C is the penalty parameter, L_{ϵ} is the ϵ -insensitive error function, and ϵ is the margin of SVM.

The transformation of the input vector is dictated by the kernel function, which adds an extra dimension to the SVM algorithm such that a linear hyperplane can separate the classes into new and higher-dimensional space [54]. There are different kernel functions that can be applied for the transformation of data suitable for finding linear decision boundaries for different non-linearly separable data sets. The commonly used Radial Basis Function (RBF) non-linear kernel function was used in this study due to its better performance in ETo and estimations compared with other kernel functions [22,29], which is expressed as:

$$K(x_n, x_i) = \exp(-\gamma \|x_n - x_i\|^2 + C) \quad (5)$$

where x_n and x_i are the n th and i th terms of the input vector, while γ and C are the hyperparameters in the SVM- RBF model.

In this study, the hyperparameters C and γ were optimized simultaneously using a grid search method with C ranging from 0.1 to 100 and ϵ ranging from 0.001 to 10, while a default value of 0.1 was used for the parameter ϵ . The grid search eliminates the trial-and-error method in tuning hyperparameters and has been proven to significantly improve the model's accuracy [36,55].

2.3.2. Extreme Learning Machine

The ELM model proposed by Huang et al. [56] is an extended single hidden layer feedforward (FF) neural network wherein the weights and biases of the hidden layer are randomly generated without the need for tuning iteratively, while the output parameters are analytically calculated. ELM has a more favorable general capability with faster learning speed; it does not require too much human intervention and can run much faster than the conventional algorithms. ELM is an efficient algorithm with numerous advantages such as ease of use, quick learning speed, higher performance, and suitability for many nonlinear activation and kernel functions [29,57,58]. The basic theory of ELM can be given as follows:

For M arbitrary distinct inputs (x_i, y_i) with $x_i \in \mathbb{R}$ and $y_i \in \mathbb{R}$, a standard single layer FF with \mathcal{N} hidden nodes and the activation function f can be modeled as the following sum:

$$\sum_{i=1}^{\mathcal{N}} \beta_i f(w_i x_j + b_i), \quad j \in \{1, 2, 3, \dots, M\} \quad (6)$$

where w_i is the input weights to the i th neuron in the hidden layer, b_i are the biases, and β_i is the output weights. In a case wherein a single-layer FF perfectly approximates the data, the relation is

$$\sum_{i=1}^N \beta_i f(w_i x_j + b_i) = y_j, \quad j \in \{1, 2, 3, \dots, M\} \quad (7)$$

which can more efficiently be written as

$$H\beta_i = Y \quad (8)$$

where

$$H = \begin{pmatrix} f(w_1 x_1 + b_1) & \cdots & f(w_n x_1 + b_n) \\ \vdots & \ddots & \vdots \\ f(w_1 x_M + b_1) & \cdots & f(w_n x_M + b_n) \end{pmatrix} \quad (9)$$

$$\beta = (\beta_1 \dots \beta_N)^T \quad (10)$$

$$Y = (y_1 \dots y_M)^T \quad (11)$$

The hidden layer output matrix H can be computed using the randomly generated first layer of the ELM and the training inputs, while the output weight β can be solved by finding the least square solution to the linear system defined in the hidden layer output matrix H . This solution is given by $\beta = H^\dagger Y$, where H^\dagger is the Moore–Penrose generalized inverse of the matrix H . The comprehensive derivation and description of the ELM algorithm can be found in the original paper of Huang et al. [56].

The kind of activation function (sigmoid, linear, or tansig) and the number of neurons in the hidden layer (ranging from 5 to 200 with an interval equal to 5) are the hyperparameters that were simultaneously tuned when using the grid search method.

2.3.3. Machine Learning Model Development

As shown in Table 3, eight different input combinations were considered to evaluate the effects of different meteorological variables on the estimation of daily ETo using machine learning models. Eight combinations of different input variables were considered for the SVM and ELM models. Model 1 has the same input combinations as the FAO-56 PM, namely, T_{\max} , T_{\min} , RH, R_s and U_z . Model 2 has the same input combination as Model 1, except that it uses extraterrestrial solar radiation (R_a , MJ/m²-day) instead of R_s . Model 3 does not have any solar radiation variable, and uses only T_{\max} , T_{\min} , RH and U_z . The input variables considered in Models 4, 5, and 6 are set to be analogous with the inputs of the TSR-, TSW-, and TS-based empirical equations, respectively. Model 7 only considers T_{\max} , T_{\min} , and RH. Finally, Model 8 only handles air temperature data, comparably with the T-based Hargreaves–Samani equation.

Table 3. The input combinations of meteorological variables used for the development of the SVM and ELM models for ETo estimation.

Input Combinations	Machine Learning Models	
	SVM	ELM
T_{\max} , T_{\min} , RH, R_s , U_z	SVM ETo-Model 1	ELM ETo-Model 1
T_{\max} , T_{\min} , RH, R_a , U_z	SVM ETo-Model 2	ELM ETo-Model 2
T_{\max} , T_{\min} , RH, U_z	SVM ETo-Model 3	ELM ETo-Model 3
T_{\max} , T_{\min} , RH, R_s	SVM ETo-Model 4	ELM ETo-Model 4
T_{\max} , T_{\min} , R_s , U_z	SVM ETo-Model 5	ELM ETo-Model 5
T_{\max} , T_{\min} , R_s	SVM ETo-Model 6	ELM ETo-Model 6
T_{\max} , T_{\min} , RH	SVM ETo-Model 7	ELM ETo-Model 7
T_{\max} , T_{\min}	SVM ETo-Model 8	ELM ETo-Model 8

In developing both SVM and ELM models, the *model development set* was further divided into a *training subset* and a *validation subset* for tuning the hyperparameters using a growing window-forward cross validation (gwFV) scheme. The gwFV is the recommended cross-validation scheme for machine learning models using time series data to preserve the temporal dependencies of the data, and provides almost unbiased estimates of the true error [59–61]. Four-folds gwFV were used for cross-validating the ETo model, a fixed window of 3 years ($n \sim 1095$).

Before putting the input and output variables into the machine learning models, raw meteorological data were standardized to avoid convergence problems using the equation:

$$X_n = \frac{X_i - \mu}{\sigma} \quad (12)$$

where X_n is the standardized value, X_i is the measured value, μ is the mean, and σ is the standard deviation. To reflect the real use of the models, the mean (μ) and standard deviation (σ) were computed using only the data of the model development set.

2.4. Evaluation of Model Performance

2.4.1. Model's Accuracy

The accuracy and performance of both the empirical and machine learning models for ETo estimation were evaluated and compared using the statistical indicators shown in Table 4. To compare or rank the studied model considering all statistical indicators, the Global Performance Index (GPI) was computed:

$$GPI_i = \sum_{j=1}^j \alpha_j (\tilde{y}_j - y_{ij}) \quad (13)$$

where \tilde{y}_j is the median of the scaled values of indicator j , y_{ij} is the scaled value of indicator j for model i , and α_j equals -1 for indicators R^2 , d and NSE, and equals 1 for the other indicator.

Table 4. Statistical indicators used for the performance evaluation of machine learning and empirical models.

Statistical Indicator	Formula	Decision Rule
Coefficient of Determination	$R^2 = \frac{\sum_{i=1}^n (X_i - Y_i)^2}{\sum_{i=1}^n (X_i - \bar{X})^2}$	Higher values are preferred
Root Mean Square Error	$RRMSE = \sqrt{\frac{\sum_{i=1}^n (Y_i - X_i)^2}{n}}$	Lower values are preferred Shows performance of short-term models
Relative RMSE	$RRMSE = \left(\sqrt{\frac{\sum_{i=1}^n (Y_i - X_i)^2}{\bar{X}_i}} \right) * 100$	Excellent: $RRMSE < 10\%$ Satisfactory: $10\% \leq RRMSE < 20\%$ Acceptable: $20\% \leq RRMSE < 30\%$ Unsatisfactory: $RRMSE \geq 30$
Percent Bias	$\%Bias = \frac{1}{n} \sum_{i=1}^n \frac{X_i - Y_i}{X_i} * 100$	Closer to 0 are preferred
Mean Error	$ME = \frac{\sum_{i=1}^n (Y_i - X_i)}{n}$	Closer to 0 are preferred Shows performance of long-term models
Mean Absolute Error	$MAE = \frac{\sum_{i=1}^n Y_i - X_i }{n}$	Lower values are preferred
d Willmott	$d = 1 - \left(\frac{\sum_{i=1}^n (Y_i - X_i)^2}{\sum_{i=1}^n (Y_i - \bar{Y} + X_i - \bar{X})} \right)$	Higher values are preferred

Table 4. Cont.

Statistical Indicator	Formula	Decision Rule
Nash–Sutcliffe efficiency	$NSE = 1 - \left(\frac{\sum_{i=1}^n (Y_i - X_i)^2}{\sum_{i=1}^n (X_i - \bar{X})^2} \right)$	Excellent: $0.8 \leq NSE < 1$ Satisfactory: $0.65 \leq NSE < 0.8$ Acceptable: $0.5 \leq NSE < 0.65$ Unsatisfactory: $NSE < 0.5$
MAPE	$MAPE = \frac{1}{n} \sum_{i=1}^n \left \frac{X_i - Y_i}{X_i} \right $	Lower values are preferred

Where n is the number of observations, X_i represents the FAO-56 ETo value, \bar{X} is the mean of the FAO-56 ETo value, Y_i is the estimated ETo value, and \bar{Y} is the mean of the estimated ETo value.

The concept of GPI indicates that if the scaled value of the indicator is far lower than the median of the scaled values, the model is the most accurate compared to other models, while if the scaled value of indicator is far higher than the median, the model is less accurate compared to the other models [62]. A higher value of GPI results in a higher accuracy of the model.

2.4.2. Machine Learning Model's Run Time

The run time or the time used for the computation of the machine learning models across models and between SVM and ELM were also compared in this study using a single sample with 4-fold gwFV cross-validation.

3. Results and Discussions

Tables 5–11 show the results of statistical indicators for all studied models given by the stations at UPLB, Sangley Point, Infanta, Alabat, Tayabas, Ambulong, and Tanay. Additionally, the computed GPI values per model and stations are presented in Table 12.

3.1. Comparison across Empirical Models

Based on the different statistical indicators and the ranking of the computed GPI, the TSR-based Turc equation performs the best among the studied empirical models in the estimation of daily ETo for all stations, except in Tanay, where it ranked second after the Makkink equation. On average, the estimated daily ETo of the Turc equation is only 6.0 to 15.2% divergent from the standard FAO-56 PM daily ETo. This fits with an R^2 of 0.93–0.97, an RMSE of 0.28–0.46 mm/day, an RRMSE of 7.5–15.1%, an MAE of 0.22–0.42 mm/day, and an NSE of 0.79–0.94. The Turc equation is best used in places where there are no wind speed data available. It is considered as one of the most accurate empirical models used to estimate ETo under humid conditions [29]. Nevertheless, the T-based Hargreaves equation gives the lowest accuracy across stations, with estimates that are 26.9–48.7% divergent from the standard FAO-56 PM ETo, with an R^2 of 0.19–0.35, an RMSE of 1.02–1.25 mm/day, an RRMSE of 25.3–40.0%, an MAE of 0.77–0.098 mm/day, and an NSE of -0.46 – 0.27 .

The ranking of the investigated empirical models according to GPI is the same for the UPLB, Infanta, Alabat and Tayabas stations, i.e., Turc > Matt–Shuttleworth > Makkink > Priestley–Taylor > Hargreaves–Samani. The ranking shows that incorporating relative humidity (TSR-based) and wind speed (TSW-based), along with solar radiation and air temperature, could improve the estimates of empirical models.

Table 5. Statistical values of empirical and machine learning models in estimating daily ETo at UPLB Station.

MODEL	Model Development									Model Evaluation								
	R ²	RMSE	RRMSE	%Bias	ME	MAE	d	NSE	MAPE	R ²	RMSE	RRMSE	%Bias	ME	MAE	d	NSE	MAPE
Hargreaves-Samani	0.28	1.19	30.318	−26.7	0.46	0.93	0.62	0.15	35.335	0.28	1.06	26.236	−17	0.3	0.86	0.61	0.2	27.327
Makkink	0.95	0.67	17.036	17.6	−0.61	0.61	0.94	0.73	17.677	0.97	0.51	12.684	12.6	−0.47	0.47	0.95	0.81	12.664
Priestley-Taylor	0.95	0.79	20.228	−16.5	0.67	0.7	0.93	0.62	17.879	0.98	0.97	23.918	−21.9	0.9	0.9	0.88	0.34	22.171
Matt-Shuttleworth	0.93	0.61	15.636	13	−0.5	0.5	0.94	0.77	13.05	0.96	0.38	9.44	7.4	−0.3	0.3	0.97	0.9	7.476
Turc	0.95	0.32	8.151	−3.4	0.14	0.25	0.99	0.94	7.162	0.97	0.36	8.779	−7.5	0.29	0.31	0.98	0.91	8.313
SVM ETo Model 1	0.988	0.122	3.074	0	−0.009	0.089	0.998	0.991	2.704	0.985	0.117	2.861	−1.9	−0.018	0.088	0.998	0.99	4.603
SVM ETo Model 2	0.711	0.679	17.071	−4.9	0.03	0.524	0.916	0.723	15.868	0.664	0.749	18.384	5	−0.471	0.611	0.882	0.602	19.833
SVM ETo Model 3	0.691	0.702	17.653	−5.1	0.028	0.547	0.909	0.703	16.625	0.663	0.757	18.571	9.9	−0.485	0.618	0.88	0.594	15.388
SVM ETo Model 4	0.968	0.215	5.407	0	−0.013	0.153	0.993	0.972	4.445	0.97	0.167	4.089	−4.1	0.064	0.125	0.995	0.98	5.795
SVM ETo Model 5	0.985	0.135	3.393	0	−0.01	0.097	0.997	0.989	2.962	0.983	0.129	3.157	−1.9	−0.016	0.093	0.997	0.988	4.633
SVM ETo Model 6	0.959	0.238	5.981	0.2	−0.022	0.169	0.991	0.966	4.914	0.963	0.186	4.55	−4.3	0.084	0.145	0.994	0.976	5.908
SVM ETo Model 7	0.611	0.784	19.695	−5.5	0.012	0.62	0.879	0.631	18.475	0.647	0.724	17.753	1.5	−0.365	0.586	0.886	0.629	19.89
SVM ETo Model 8	0.584	0.81	20.35	−5.9	0.007	0.641	0.866	0.606	19.272	0.639	0.716	17.57	−1.3	−0.315	0.57	0.886	0.636	20.851
ELM ETo Model 1	0.99	0.121	3.032	−0.2	0	0.086	0.998	0.991	2.616	0.99	0.114	2.787	−1	0	0.082	0.998	0.991	3.2
ELM ETo Model 2	0.695	0.689	17.311	−4.3	0	0.537	0.911	0.715	16.194	0.654	0.771	18.917	10.9	−0.497	0.629	0.875	0.578	15.482
ELM ETo Model 3	0.685	0.701	17.604	−4.5	0	0.549	0.908	0.705	16.582	0.65	0.778	19.085	8.6	−0.503	0.636	0.873	0.571	17.469
ELM ETo Model 4	0.969	0.217	5.461	−0.5	0	0.158	0.993	0.972	4.658	0.966	0.179	4.392	−6.6	0.075	0.129	0.994	0.977	8.119
ELM ETo Model 5	0.988	0.135	3.4	−0.3	0	0.094	0.997	0.989	2.936	0.985	0.144	3.528	−5.2	0.002	0.089	0.996	0.985	7.624
ELM ETo Model 6	0.963	0.237	5.96	−0.7	0	0.173	0.991	0.966	5.173	0.958	0.198	4.862	−6.6	0.105	0.155	0.993	0.972	7.912
ELM ETo Model 7	0.615	0.777	19.536	−5.3	0	0.615	0.879	0.637	18.327	0.648	0.724	17.764	2.5	−0.37	0.586	0.886	0.628	18.956
ELM ETo Model 8	0.578	0.815	20.47	−5.6	−0.003	0.646	0.864	0.601	19.409	0.64	0.717	17.575	1.9	−0.318	0.575	0.886	0.636	17.993

Notes: (1) Best statistical indicators among each category (Empirical Model, SVM, and ELM) are marked in **bold green**, while least accurate are marked in **bold red**.

(2) R², d and NSE are dimensionless; RRMSE, %Bias and MAPE are in percent; and RMSE, ME, and MAE are in mm/day.

(3) Highlight colors of models indicate the input or independent variables considered, i.e., **f (T)** **f (T, Rs)** **f (T, Rs, Uz)** **f (T, RH, Rs)** **f (T, RH, Rs, Uz)**

Table 6. Statistical values of empirical and machine learning models used for estimating daily ETo at Sangley Point Station.

MODEL	Model Development									Model Evaluation								
	R ²	RMSE	RRMSE	%Bias	ME	MAE	d	NSE	MAPE	R ²	RMSE	RRMSE	%Bias	ME	MAE	d	NSE	MAPE
Hargreaves-Samani	0.19	1.25	28.627	−21.4	0.16	0.93	0.54	0.17	34.921	0.25	1.11	25.19	−15.6	0.18	0.84	0.61	0.22	27.561
Makkink	0.94	0.88	20.185	20.3	−0.81	0.81	0.89	0.59	20.292	0.93	1.08	24.46	24.4	−1.02	1.02	0.83	0.27	24.397
Priestley-Taylor	0.94	0.69	15.813	−13.2	0.56	0.61	0.95	0.75	14.457	0.91	0.52	11.674	−6.8	0.31	0.42	0.96	0.83	9.858
Matt-Shuttleworth	0.89	0.99	22.831	19.6	−0.86	0.86	0.86	0.47	19.597	0.86	1.16	26.205	23.7	−1.05	1.05	0.79	0.16	23.68
Turc	0.95	0.33	7.496	0.4	−0.04	0.24	0.98	0.94	6.078	0.93	0.43	9.693	5.5	−0.25	0.31	0.97	0.89	7.098
SVM ETo Model 1	0.99	0.086	1.966	0.4	−0.025	0.075	0.999	0.996	1.93	0.988	0.088	1.987	0.6	−0.031	0.074	0.999	0.995	1.805
SVM ETo Model 2	0.846	0.539	12.383	−4.4	0.056	0.388	0.957	0.845	12.175	0.811	0.598	13.509	−11.6	0.378	0.444	0.94	0.777	13.163
SVM ETo Model 3	0.815	0.581	13.36	−4.2	0.038	0.445	0.949	0.82	13.485	0.777	0.655	14.802	−12.3	0.399	0.513	0.927	0.732	14.775
SVM ETo Model 4	0.985	0.158	3.641	−0.1	−0.004	0.117	0.997	0.987	2.956	0.963	0.22	4.978	−1.1	0.045	0.164	0.993	0.97	3.907
SVM ETo Model 5	0.983	0.164	3.773	−0.1	−0.005	0.119	0.996	0.986	3.27	0.926	0.297	6.711	3.1	−0.142	0.18	0.986	0.945	4.204
SVM ETo Model 6	0.961	0.241	5.534	0.1	−0.023	0.173	0.992	0.969	4.399	0.905	0.349	7.88	2.9	−0.14	0.239	0.98	0.924	5.434
SVM ETo Model 7	0.797	0.606	13.935	−4.2	0.033	0.471	0.944	0.804	13.93	0.743	0.743	16.802	−14.3	0.496	0.599	0.912	0.655	16.506
SVM ETo Model 8	0.668	0.773	17.782	−7.5	0.041	0.594	0.896	0.681	18.826	0.664	0.75	16.958	−8.1	0.181	0.588	0.897	0.649	16.532
ELM ETo Model 1	0.997	0.066	1.523	0	0	0.051	0.999	0.998	1.335	0.993	0.08	1.809	0.2	−0.013	0.059	0.999	0.996	1.431
ELM ETo Model 2	0.835	0.535	12.307	−3.2	0	0.395	0.957	0.847	12.209	0.822	0.567	12.826	−10.7	0.341	0.425	0.946	0.799	12.608
ELM ETo Model 3	0.809	0.578	13.277	−3.5	0	0.447	0.949	0.822	13.453	0.772	0.65	14.701	−11.9	0.368	0.506	0.926	0.736	14.687
ELM ETo Model 4	0.986	0.157	3.614	−0.2	0	0.117	0.997	0.987	2.954	0.961	0.237	5.362	−0.8	0.029	0.168	0.991	0.965	3.951
ELM ETo Model 5	0.985	0.163	3.744	−0.3	0	0.119	0.996	0.986	3.27	0.938	0.263	5.945	2.8	−0.131	0.176	0.989	0.957	4.154
ELM ETo Model 6	0.967	0.239	5.491	−0.4	0	0.176	0.992	0.97	4.526	0.907	0.34	7.689	2.9	−0.143	0.234	0.981	0.928	5.371
ELM ETo Model 7	0.789	0.608	13.979	−3.7	0	0.475	0.943	0.803	14.058	0.72	0.758	17.125	−13.8	0.462	0.594	0.907	0.642	16.487
ELM ETo Model 8	0.665	0.769	17.677	−6.3	0	0.595	0.899	0.685	18.567	0.532	0.888	20.063	−5.6	0.05	0.632	0.855	0.508	17.101

Notes: (1) Best statistical indicators among each category (Empirical Model, SVM, and ELM) are marked in **bold green**, while least accurate are marked in **bold red**.

(2) R², d and NSE are dimensionless; RRMSE, %Bias and MAPE are in percent; and RMSE, ME, and MAE are in mm/day.

(3) Highlight colors of models indicate the input or independent variables considered, i.e., **f (T)** **f (T, Rs)** **f (T, Rs, Uz)** **f (T, RH, Rs)** **f (T, RH, Rs, Uz)**

Table 7. Statistical values of empirical and machine learning models used for estimating daily ETo at **Infanta Station**.

MODEL	Model Development									Model Evaluation								
	R ²	RMSE	RRMSE	%Bias	ME	MAE	d	NSE	MAPE	R ²	RMSE	RRMSE	%Bias	ME	MAE	d	NSE	MAPE
<i>Hargreaves-Samani</i>	0.29	1.24	35.571	−39.8	0.87	0.93	0.59	−0.41	40.923	0.36	1.21	34.27	−36.8	0.84	0.93	0.61	−0.25	38.645
<i>Makkink</i>	0.94	0.58	16.704	16.9	−0.52	0.52	0.93	0.69	16.892	0.95	0.57	16.296	15.7	−0.52	0.52	0.93	0.72	15.746
<i>Priestley-Taylor</i>	0.96	0.81	23.327	−20.3	0.72	0.75	0.89	0.39	21.59	0.96	0.83	23.558	−21.7	0.76	0.77	0.89	0.41	22.142
<i>Matt-Shuttleworth</i>	0.93	0.42	12.057	10	−0.32	0.32	0.96	0.84	9.974	0.94	0.42	11.955	9.8	−0.34	0.34	0.96	0.85	9.832
<i>Turc</i>	0.94	0.33	9.462	−5.9	0.2	0.28	0.98	0.9	9.151	0.95	0.32	9.179	−6.8	0.21	0.28	0.98	0.91	8.954
<i>SVM ETo Model 1</i>	0.989	0.07	2.004	0.3	−0.019	0.061	0.999	0.996	1.914	0.988	0.07	1.999	0.5	−0.024	0.061	0.999	0.996	1.859
<i>SVM ETo Model 2</i>	0.682	0.593	16.99	−6.7	0.076	0.426	0.901	0.679	15.727	0.629	0.642	18.211	−3.8	−0.005	0.479	0.889	0.647	15.834
<i>SVM ETo Model 3</i>	0.633	0.63	18.054	−6.9	0.061	0.476	0.883	0.637	17.333	0.616	0.651	18.461	−3.7	−0.016	0.507	0.881	0.637	16.563
<i>SVM ETo Model 4</i>	0.985	0.112	3.197	0	−0.009	0.08	0.997	0.989	2.656	0.981	0.114	3.23	0.4	−0.023	0.081	0.997	0.989	2.526
<i>SVM ETo Model 5</i>	0.983	0.128	3.656	−0.1	−0.005	0.085	0.996	0.985	3.082	0.976	0.148	4.198	−1.4	0.031	0.102	0.995	0.981	3.698
<i>SVM ETo Model 6</i>	0.967	0.172	4.941	0.4	−0.022	0.107	0.993	0.973	3.799	0.97	0.165	4.673	0.1	−0.017	0.112	0.994	0.977	3.844
<i>SVM ETo Model 7</i>	0.612	0.648	18.574	−7.5	0.066	0.495	0.873	0.616	18.204	0.639	0.638	18.099	−5.9	0.038	0.498	0.881	0.651	16.646
<i>SVM ETo Model 8</i>	0.549	0.695	19.906	−7.8	0.048	0.54	0.848	0.559	19.93	0.559	0.717	20.323	−8.9	0.084	0.571	0.834	0.56	19.957
<i>ELM ETo Model 1</i>	0.997	0.056	1.594	0	0	0.041	0.999	0.997	1.32	0.997	0.061	1.72	0	0	0.044	0.999	0.997	1.421
<i>ELM ETo Model 2</i>	0.659	0.595	17.043	−4.6	0	0.447	0.896	0.677	16.035	0.62	0.643	18.23	−1.9	−0.07	0.49	0.886	0.646	15.921
<i>ELM ETo Model 3</i>	0.618	0.63	18.053	−5.1	0	0.488	0.88	0.637	17.388	0.607	0.653	18.526	−2.1	−0.071	0.513	0.878	0.635	16.462
<i>ELM ETo Model 4</i>	0.988	0.108	3.104	−0.2	0	0.073	0.997	0.989	2.453	0.985	0.111	3.14	0.1	−0.011	0.075	0.997	0.99	2.362
<i>ELM ETo Model 5</i>	0.985	0.125	3.586	−0.3	0	0.081	0.996	0.986	3.004	0.976	0.147	4.156	−1.5	0.034	0.099	0.995	0.982	3.595
<i>ELM ETo Model 6</i>	0.972	0.17	4.862	−0.5	0	0.109	0.993	0.974	3.975	0.975	0.163	4.63	−0.6	0.001	0.113	0.994	0.977	3.955
<i>ELM ETo Model 7</i>	0.602	0.643	18.431	−5.4	0	0.499	0.873	0.622	17.861	0.621	0.644	18.277	−3.9	−0.027	0.506	0.876	0.644	16.478
<i>ELM ETo Model 8</i>	0.541	0.693	19.849	−6.5	0	0.544	0.844	0.561	19.812	0.552	0.714	20.253	−7.5	0.035	0.571	0.831	0.563	19.669

Notes: (1) Best statistical indicators among each category (Empirical Model, SVM, and ELM) are marked in **bold green**, while least accurate are marked in **bold red**.

(2) R², d and NSE are dimensionless; RRMSE, %Bias and MAPE are in percent; and RMSE, ME, and MAE are in mm/day.

(3) Highlight colors of models indicate the input or independent variables considered, i.e., **f (T)** **f (T, Rs)** **f (T, Rs, Uz)** **f (T, RH, Rs)** **f (T, RH, Rs, Uz)**

Table 8. Statistical values of empirical and machine learning models used for estimating daily ETo at Alabat Station.

MODEL	Model Development									Model Evaluation								
	R ²	RMSE	RRMSE	%Bias	ME	MAE	d	NSE	MAPE	R ²	RMSE	RRMSE	%Bias	ME	MAE	d	NSE	MAPE
Hargreaves-Samani	0.35	1.02	25.3	−18.4	0.26	0.77	0.62	0.27	28.185	0.34	1.06	27.47	−26	0.53	0.76	0.62	0.09	30.607
Makkink	0.96	0.6	14.789	16.3	−0.54	0.54	0.94	0.75	16.332	0.97	0.56	14.544	15.3	−0.52	0.52	0.94	0.74	15.268
Priestley-Taylor	0.98	0.9	22.459	−17.1	0.77	0.81	0.9	0.42	19.207	0.97	0.91	23.617	−20.8	0.83	0.84	0.88	0.33	21.297
Matt-Shuttleworth	0.95	0.63	15.589	15.9	−0.56	0.56	0.94	0.72	15.89	0.94	0.48	12.538	11.3	−0.4	0.4	0.95	0.81	11.345
Turc	0.96	0.36	9.006	−3.9	0.21	0.31	0.98	0.91	8.568	0.97	0.31	8.129	−5.9	0.23	0.27	0.98	0.92	7.714
SVM ETo Model 1	0.99	0.076	1.897	0.2	−0.02	0.067	0.999	0.996	1.863	0.987	0.089	2.322	0	−0.022	0.079	0.998	0.994	2.291
SVM ETo Model 2	0.653	0.71	17.636	−8.2	0.128	0.517	0.889	0.643	17.067	0.615	0.771	20.039	−13.1	0.351	0.547	0.878	0.516	18.286
SVM ETo Model 3	0.61	0.74	18.379	−7.1	0.072	0.568	0.874	0.612	18.074	0.604	0.805	20.927	−11.8	0.346	0.603	0.874	0.472	18.876
SVM ETo Model 4	0.986	0.127	3.144	−0.1	−0.007	0.092	0.997	0.989	2.899	0.981	0.134	3.493	−1.4	0.032	0.097	0.996	0.985	3.088
SVM ETo Model 5	0.988	0.115	2.847	0	−0.007	0.083	0.998	0.991	2.5	0.971	0.168	4.358	−2.8	0.066	0.124	0.994	0.977	4.195
SVM ETo Model 6	0.982	0.16	3.964	−0.1	−0.003	0.113	0.996	0.982	3.505	0.94	0.247	6.427	−5.6	0.159	0.19	0.987	0.95	6.451
SVM ETo Model 7	0.6	0.749	18.603	−7.4	0.074	0.573	0.869	0.603	18.403	0.622	0.776	20.163	−12.6	0.361	0.589	0.881	0.51	18.708
SVM ETo Model 8	0.564	0.783	19.44	−8.6	0.087	0.602	0.851	0.566	19.773	0.538	0.91	23.658	−21	0.564	0.712	0.818	0.325	24.538
ELM ETo Model 1	0.997	0.064	1.578	0	0	0.047	0.999	0.997	1.351	0.991	0.102	2.66	−0.7	0.007	0.073	0.998	0.991	2.362
ELM ETo Model 2	0.628	0.707	17.555	−5.2	0	0.543	0.884	0.646	17.291	0.659	0.696	18.084	−6.6	0.15	0.513	0.901	0.606	16.644
ELM ETo Model 3	0.6	0.734	18.228	−5.4	0	0.572	0.871	0.619	17.849	0.617	0.756	19.656	−11.3	0.302	0.57	0.881	0.534	18.32
ELM ETo Model 4	0.988	0.125	3.105	−0.2	0	0.088	0.997	0.989	2.831	0.966	0.165	4.285	−2.4	0.076	0.117	0.994	0.978	3.549
ELM ETo Model 5	0.99	0.112	2.787	−0.2	0	0.08	0.998	0.991	2.42	0.967	0.17	4.421	−3	0.079	0.123	0.994	0.976	4.151
ELM ETo Model 6	0.98	0.161	3.999	−0.4	0	0.114	0.995	0.982	3.619	0.947	0.229	5.952	−5.5	0.155	0.187	0.989	0.957	6.354
ELM ETo Model 7	0.586	0.746	18.543	−5.6	0	0.583	0.865	0.605	18.333	0.618	0.758	19.695	−10.9	0.301	0.569	0.883	0.532	18.096
ELM ETo Model 8	0.547	0.782	19.431	−6.3	0	0.612	0.846	0.567	19.622	0.553	0.859	22.34	−19	0.491	0.672	0.83	0.398	23.342

Notes: (1) Best statistical indicators among each category (Empirical Model, SVM, and ELM) are marked in **bold green**, while least accurate are marked in **bold red**.

(2) R², d and NSE are dimensionless; RRMSE, %Bias and MAPE are in percent; and RMSE, ME, and MAE are in mm/day.

(3) Highlight colors of models indicate the input or independent variables considered, i.e., **f (T)** **f (T, Rs)** **f (T, Rs, Uz)** **f (T, RH, Rs)** **f (T, RH, Rs, Uz)**

Table 9. Statistical values of empirical and machine learning models used for estimating daily ETo at **Tayabas Station**.

MODEL	Model Development									Model Evaluation								
	R ²	RMSE	RRMSE	%Bias	ME	MAE	d	NSE	MAPE	R ²	RMSE	RRMSE	%Bias	ME	MAE	d	NSE	MAPE
<i>Hargreaves-Samani</i>	0.29	1.23	35.626	−39.8	0.87	0.94	0.58	−0.44	41.167	0.34	1.12	31.018	−31.5	0.69	0.84	0.61	−0.1	34.382
<i>Makkink</i>	0.97	0.53	15.299	16.6	−0.5	0.5	0.94	0.73	16.582	0.96	0.54	14.975	15.6	−0.5	0.5	0.94	0.74	15.602
<i>Priestley-Taylor</i>	0.98	0.81	23.342	−20.7	0.74	0.75	0.89	0.38	21.223	0.97	0.85	23.476	−20.8	0.77	0.78	0.89	0.37	21.134
<i>Matt-Shuttleworth</i>	0.96	0.4	11.535	10.5	−0.34	0.34	0.96	0.85	10.543	0.95	0.45	12.357	11.4	−0.38	0.38	0.96	0.83	11.377
<i>Turc</i>	0.97	0.28	8.097	−5.9	0.21	0.24	0.98	0.93	7.562	0.97	0.3	8.211	−5.9	0.21	0.26	0.98	0.92	7.61
<i>SVM ETo Model 1</i>	0.989	0.07	2.015	0.3	−0.021	0.062	0.999	0.995	1.957	0.989	0.074	2.031	0.3	−0.021	0.063	0.999	0.995	1.91
<i>SVM ETo Model 2</i>	0.708	0.552	15.996	−5.8	0.056	0.409	0.912	0.71	15.158	0.68	0.591	16.323	−4.7	0.009	0.452	0.9	0.696	15.349
<i>SVM ETo Model 3</i>	0.677	0.575	16.681	−5.8	0.043	0.441	0.901	0.684	16.135	0.633	0.631	17.43	−4.3	−0.012	0.497	0.884	0.653	16.405
<i>SVM ETo Model 4</i>	0.99	0.089	2.592	0	−0.005	0.067	0.998	0.992	2.234	0.987	0.106	2.915	0.2	−0.011	0.075	0.998	0.99	2.363
<i>SVM ETo Model 5</i>	0.985	0.107	3.105	0.1	−0.011	0.076	0.997	0.989	2.611	0.976	0.148	4.094	−1.3	0.029	0.102	0.995	0.981	3.395
<i>SVM ETo Model 6</i>	0.983	0.126	3.667	0	−0.005	0.084	0.996	0.985	2.878	0.977	0.162	4.463	−0.6	0.008	0.106	0.994	0.977	3.521
<i>SVM ETo Model 7</i>	0.668	0.583	16.914	−6	0.043	0.45	0.897	0.676	16.558	0.644	0.623	17.217	−4.7	0.001	0.492	0.887	0.662	16.334
<i>SVM ETo Model 8</i>	0.587	0.652	18.887	−7.4	0.049	0.507	0.863	0.595	18.942	0.573	0.701	19.363	−8.9	0.09	0.545	0.846	0.572	19.341
<i>ELM ETo Model 1</i>	0.997	0.056	1.63	0	0	0.042	0.999	0.997	1.386	0.995	0.074	2.047	0	−0.001	0.051	0.999	0.995	1.595
<i>ELM ETo Model 2</i>	0.699	0.546	15.838	−4.2	0	0.416	0.912	0.715	15.108	0.661	0.601	16.617	−3	−0.046	0.468	0.897	0.685	15.412
<i>ELM ETo Model 3</i>	0.666	0.576	16.7	−4.6	0	0.449	0.899	0.684	16.183	0.624	0.636	17.585	−3.5	−0.034	0.501	0.883	0.647	16.327
<i>ELM ETo Model 4</i>	0.992	0.086	2.493	−0.1	0	0.063	0.998	0.993	2.109	0.986	0.116	3.211	0.2	−0.008	0.075	0.997	0.988	2.369
<i>ELM ETo Model 5</i>	0.988	0.11	3.185	−0.2	0	0.076	0.997	0.988	2.716	0.974	0.16	4.422	−1.4	0.03	0.106	0.994	0.978	3.65
<i>ELM ETo Model 6</i>	0.984	0.124	3.595	−0.2	0	0.084	0.996	0.985	2.916	0.972	0.175	4.831	−1	0.016	0.111	0.993	0.973	3.79
<i>ELM ETo Model 7</i>	0.655	0.586	16.983	−4.7	0	0.457	0.895	0.673	16.541	0.609	0.653	18.036	−3.8	−0.02	0.506	0.879	0.629	16.554
<i>ELM ETo Model 8</i>	0.577	0.651	18.862	−5.9	0	0.512	0.861	0.596	18.847	0.574	0.692	19.111	−7.6	0.052	0.54	0.849	0.583	18.944

Notes: (1) Best statistical indicators among each category (Empirical Model, SVM, and ELM) are marked in **bold green**, while least accurate are marked in **bold red**.

(2) R², d and NSE are dimensionless; RRMSE, %Bias and MAPE are in percent; and RMSE, ME, and MAE are in mm/day.

(3) Highlight colors of models indicate the input or independent variables considered, i.e., **f (T)** **f (T, Rs)** **f (T, Rs, Uz)** **f (T, RH, Rs)** **f (T, RH, Rs, Uz)**

Table 10. Statistical values of empirical and machine learning models used for estimating daily ETo at Ambulong Station.

MODEL	Model Development									Model Evaluation								
	R ²	RMSE	RRMSE	%Bias	ME	MAE	d	NSE	MAPE	R ²	RMSE	RRMSE	%Bias	ME	MAE	d	NSE	MAPE
Hargreaves-Samani	0.28	1.12	30.099	−30.9	0.68	0.81	0.61	−0.15	33.534	0.34	1.01	25.519	−22.1	0.48	0.73	0.65	0.14	26.88
Makkink	0.93	0.77	20.734	21.6	−0.72	0.72	0.88	0.46	21.585	0.89	0.88	22.264	22	−0.8	0.8	0.85	0.34	21.981
Priestley-Taylor	0.92	0.6	16.159	−11.2	0.44	0.52	0.93	0.67	14.032	0.88	0.64	16.123	−9.7	0.4	0.54	0.93	0.65	13.707
Matt-Shuttleworth	0.88	0.71	18.985	17	−0.61	0.61	0.89	0.54	17.056	0.82	0.85	21.625	18.7	−0.72	0.72	0.85	0.38	18.717
Turc	0.93	0.29	7.74	0.3	0.01	0.22	0.98	0.92	6.52	0.89	0.37	9.488	1.9	−0.06	0.26	0.97	0.88	7.191
SVM ETo Model 1	0.989	0.091	2.429	0.1	−0.009	0.071	0.998	0.993	2.255	0.951	0.215	5.441	0.9	−0.043	0.135	0.99	0.961	3.94
SVM ETo Model 2	0.789	0.479	12.842	−3.8	0.039	0.361	0.94	0.791	12.196	0.725	0.558	14.123	−4	0.012	0.424	0.914	0.735	13.308
SVM ETo Model 3	0.716	0.548	14.694	−3.9	0.016	0.435	0.917	0.727	14.163	0.68	0.596	15.101	−2.6	−0.056	0.465	0.896	0.697	14.062
SVM ETo Model 4	0.955	0.205	5.485	0.1	−0.017	0.145	0.99	0.962	4.344	0.889	0.332	8.397	3	−0.129	0.211	0.976	0.906	5.708
SVM ETo Model 5	0.975	0.152	4.07	−0.1	−0.008	0.104	0.995	0.979	3.451	0.962	0.2	5.071	−0.2	−0.007	0.141	0.991	0.966	4.294
SVM ETo Model 6	0.937	0.243	6.53	0.5	−0.033	0.168	0.986	0.946	5.119	0.886	0.339	8.591	1.9	−0.095	0.234	0.975	0.902	6.444
SVM ETo Model 7	0.702	0.56	15.027	−3.9	0.015	0.444	0.912	0.714	14.403	0.656	0.619	15.679	−1.7	−0.093	0.486	0.885	0.674	14.484
SVM ETo Model 8	0.667	0.596	15.996	−4.9	0.031	0.472	0.898	0.676	15.626	0.595	0.68	17.216	−5.6	0.033	0.524	0.862	0.606	16.419
ELM ETo Model 1	0.993	0.087	2.342	−0.1	0	0.065	0.998	0.993	2.115	0.95	0.221	5.609	0.8	−0.037	0.139	0.989	0.958	4.019
ELM ETo Model 2	0.785	0.472	12.672	−2.8	0	0.362	0.941	0.797	12.038	0.704	0.571	14.474	−2.4	−0.052	0.445	0.907	0.722	13.54
ELM ETo Model 3	0.719	0.541	14.506	−3.4	0	0.43	0.918	0.733	13.958	0.663	0.615	15.576	−2	−0.084	0.488	0.885	0.678	14.607
ELM ETo Model 4	0.961	0.201	5.392	−0.4	0	0.147	0.991	0.963	4.429	0.885	0.336	8.511	2.9	−0.136	0.22	0.975	0.904	5.927
ELM ETo Model 5	0.979	0.148	3.962	−0.3	0	0.1	0.995	0.98	3.357	0.96	0.208	5.262	−0.4	−0.003	0.144	0.991	0.963	4.362
ELM ETo Model 6	0.944	0.239	6.411	−0.7	0	0.172	0.986	0.948	5.363	0.891	0.332	8.415	0.8	−0.062	0.236	0.975	0.906	6.603
ELM ETo Model 7	0.699	0.561	15.035	−3.7	0	0.446	0.911	0.714	14.477	0.646	0.632	16.014	−1.2	−0.119	0.501	0.877	0.66	14.793
ELM ETo Model 8	0.661	0.595	15.961	−4.2	0	0.473	0.896	0.677	15.608	0.59	0.679	17.207	−4.6	−0.008	0.529	0.859	0.607	16.379

Notes: (1) Best statistical indicators among each category (Empirical Model, SVM, and ELM) are marked in **bold green**, while least accurate are marked in **bold red**.

(2) R², d and NSE are dimensionless; RRMSE, %Bias and MAPE are in percent; and RMSE, ME, and MAE are in mm/day.

(3) Highlight colors of models indicate the input or independent variables considered, i.e., **f (T)** **f (T, Rs)** **f (T, Rs, Uz)** **f (T, RH, Rs)** **f (T, RH, Rs, Uz)**

Table 11. Statistical values of empirical and machine learning models in estimating daily ETo at Tanay Station.

MODEL	Model Development									Model Evaluation								
	R ²	RMSE	RRMSE	%Bias	ME	MAE	d	NSE	MAPE	R ²	RMSE	RRMSE	%Bias	ME	MAE	d	NSE	MAPE
Hargreaves-Samani	0.34	1.23	40.001	−47.1	0.9	0.98	0.6	−0.46	48.677	0.37	1.1	33.497	−35.6	0.68	0.85	0.63	−0.06	39.055
Makkink	0.95	0.3	9.903	7.9	−0.2	0.24	0.98	0.91	9.426	0.95	0.36	11.051	9.4	−0.27	0.3	0.97	0.89	10.332
Priestley-Taylor	0.95	0.97	31.666	−30.9	0.91	0.91	0.84	0.09	31.112	0.94	0.92	28.026	−26.8	0.84	0.85	0.87	0.26	27.118
Matt-Shuttleworth	0.93	0.41	13.484	9.9	−0.31	0.32	0.96	0.83	10.433	0.9	0.56	17	13.4	−0.44	0.45	0.93	0.73	13.629
Turc	0.95	0.46	15.171	−14.6	0.41	0.42	0.95	0.79	15.232	0.95	0.42	12.776	−11.6	0.35	0.37	0.96	0.85	12.518
SVM ETo Model 1	0.989	0.07	2.3	0.2	−0.014	0.062	0.999	0.995	2.303	0.992	0.072	2.19	0.1	−0.01	0.061	0.999	0.995	2.161
SVM ETo Model 2	0.798	0.443	14.472	−4.4	0.017	0.344	0.945	0.809	14.293	0.822	0.445	13.55	−4.5	0.034	0.347	0.95	0.827	13.366
SVM ETo Model 3	0.792	0.448	14.621	−3.8	0.006	0.348	0.944	0.805	14.256	0.822	0.442	13.463	−4	0.025	0.348	0.951	0.83	13.245
SVM ETo Model 4	0.989	0.1	3.253	−0.2	0	0.075	0.998	0.99	2.838	0.99	0.097	2.961	0	−0.003	0.074	0.998	0.992	2.525
SVM ETo Model 5	0.965	0.177	5.778	−0.2	−0.008	0.124	0.992	0.97	4.754	0.937	0.226	6.868	2.1	−0.078	0.161	0.989	0.956	5.414
SVM ETo Model 6	0.962	0.186	6.079	−0.4	−0.005	0.132	0.991	0.966	5.099	0.94	0.221	6.716	1.9	−0.07	0.159	0.989	0.958	5.361
SVM ETo Model 7	0.781	0.461	15.042	−4.4	0.01	0.358	0.94	0.794	14.905	0.814	0.449	13.661	−3.8	0.018	0.355	0.95	0.824	13.465
SVM ETo Model 8	0.672	0.568	18.528	−6.7	0.023	0.44	0.902	0.687	18.632	0.616	0.638	19.41	−1.9	−0.112	0.509	0.887	0.646	18.765
ELM ETo Model 1	0.996	0.062	2.031	−0.1	0	0.048	0.999	0.996	1.806	0.995	0.07	2.143	0	0.001	0.053	0.999	0.996	1.869
ELM ETo Model 2	0.799	0.438	14.304	−3.7	0	0.339	0.946	0.814	13.981	0.8	0.462	14.071	−3.6	0.008	0.362	0.946	0.814	13.557
ELM ETo Model 3	0.786	0.452	14.756	−3.9	0	0.352	0.942	0.802	14.559	0.81	0.45	13.691	−3.3	0.002	0.355	0.949	0.824	13.398
ELM ETo Model 4	0.989	0.1	3.274	−0.2	0	0.075	0.998	0.99	2.84	0.99	0.101	3.062	0	−0.003	0.075	0.998	0.991	2.561
ELM ETo Model 5	0.967	0.177	5.76	−0.5	0	0.124	0.992	0.97	4.803	0.938	0.224	6.808	1.9	−0.074	0.16	0.989	0.956	5.397
ELM ETo Model 6	0.964	0.185	6.026	−0.6	0	0.132	0.992	0.967	5.088	0.941	0.219	6.679	1.7	−0.066	0.158	0.989	0.958	5.34
ELM ETo Model 7	0.781	0.458	14.93	−4.1	0	0.356	0.941	0.797	14.799	0.805	0.456	13.886	−3.6	0.007	0.363	0.947	0.819	13.661
ELM ETo Model 8	0.669	0.566	18.454	−6	0	0.44	0.901	0.69	18.518	0.608	0.645	19.625	−1.1	−0.14	0.516	0.883	0.638	18.797

Notes: (1) Best statistical indicators among each category (Empirical Model, SVM, and ELM) are marked in **bold green**, while least accurate are marked in **bold red**.

(2) R², d and NSE are dimensionless; RRMSE, %Bias and MAPE are in percent; and RMSE, ME, and MAE are in mm/day.

(3) Highlight colors of models indicate the input or independent variables considered, i.e., **f (T)** **f (T, Rs)** **f (T, Rs, Uz)** **f (T, RH, Rs)** **f (T, RH, Rs, Uz)**

Table 12. Computed GPI (and ranking) for different empirical and machine learning models used for the estimation of daily ETo.

MODEL	Model Development							Model Evaluation						
	UPLB	Sangley	Infanta	Alabat	Tayabas	Ambulong	Tanay	UPLB	Sangley	Infanta	Alabat	Tayabas	Ambulong	Tanay
<i>Hargreaves-Samani</i>	−4.36 (21)	−4.74 (21)	−4.85 (21)	−3.63 (21)	−5.08 (21)	−4.99 (21)	−5.44 (21)	−4.62 (21)	−4.14 (21)	−4.72 (21)	−4.04 (21)	−4.68 (21)	−4.36 (21)	−5.05 (21)
<i>Makkink</i>	−0.15 (11)	−1.66 (19)	−0.14 (11)	0.04 (10)	−0.14 (11)	−1.67 (20)	0.54 (9)	−0.07 (11)	−2.82 (19)	0 (11)	0.15 (11)	−0.07 (11)	−2.22 (20)	0.42 (9)
<i>Priestley-Taylor</i>	−0.88 (16)	−0.77 (16)	−1.43 (20)	−1.61 (19)	−1.6 (20)	−0.74 (14)	−2.93 (20)	−2.69 (20)	0.28 (10)	−1.47 (20)	−1.94 (18)	−1.86 (20)	−0.49 (12)	−2.82 (20)
<i>Matt-Shuttleworth</i>	0.26 (10)	−2.11 (20)	0.67 (10)	−0.06 (11)	0.52 (10)	−1.23 (19)	0.16 (10)	0.81 (10)	−3.26 (20)	0.77 (10)	0.68 (10)	0.5 (10)	−1.94 (19)	−0.53 (17)
<i>Turc</i>	1.52 (9)	0.91 (9)	0.91 (9)	1.47 (9)	0.91 (9)	0.96 (9)	−0.32 (14)	0.88 (9)	0.84 (9)	1.06 (9)	1.52 (9)	1.12 (9)	1.38 (9)	0.04 (10)
<i>SVM ETo Model 1</i>	2.39 (2)	1.79 (2)	2.01 (2)	2.91 (2)	1.79 (2)	1.89 (2)	1.43 (2)	2.04 (2)	2.18 (2)	2.15 (2)	2.62 (1)	2.17 (2)	2.38 (2)	1.73 (2)
<i>SVM ETo Model 2</i>	−0.41 (12)	−0.15 (11)	−0.48 (12)	−0.98 (13)	−0.5 (13)	−0.21 (11)	−0.27 (12)	−1.68 (17)	−0.48 (12)	−0.76 (12)	−1.65 (15)	−0.64 (12)	−0.21 (10)	−0.16 (12)
<i>SVM ETo Model 3</i>	−0.57 (15)	−0.4 (13)	−0.77 (14)	−1.25 (16)	−0.68 (14)	−0.71 (13)	−0.3 (13)	−1.67 (16)	−0.86 (14)	−0.87 (16)	−1.89 (17)	−0.95 (15)	−0.52 (13)	−0.15 (11)
<i>SVM ETo Model 4</i>	2.03 (5)	1.55 (4)	1.88 (4)	2.7 (6)	1.73 (4)	1.41 (6)	1.34 (3)	1.8 (5)	1.64 (3)	2.01 (4)	2.41 (3)	2.06 (3)	1.76 (5)	1.65 (3)
<i>SVM ETo Model 5</i>	2.34 (4)	1.53 (6)	1.82 (6)	2.76 (4)	1.67 (5)	1.65 (4)	1.06 (6)	2 (3)	1.49 (6)	1.87 (6)	2.21 (6)	1.89 (5)	2.39 (1)	1.08 (8)
<i>SVM ETo Model 6</i>	1.93 (7)	1.26 (7)	1.67 (8)	2.56 (7)	1.61 (8)	1.24 (7)	1.02 (8)	1.71 (7)	1.22 (7)	1.82 (8)	1.72 (8)	1.85 (6)	1.64 (7)	1.1 (6)
<i>SVM ETo Model 7</i>	−1.12 (18)	−0.53 (15)	−0.9 (17)	−1.33 (17)	−0.74 (16)	−0.79 (15)	−0.37 (17)	−1.55 (15)	−1.42 (17)	−0.79 (14)	−1.73 (16)	−0.89 (14)	−0.7 (15)	−0.19 (13)
<i>SVM ETo Model 8</i>	−1.3 (19)	−1.52 (18)	−1.25 (18)	−1.66 (20)	−1.21 (18)	−1.07 (18)	−1.03 (19)	−1.51 (13)	−1.37 (16)	−1.39 (19)	−3.02 (20)	−1.48 (19)	−1.33 (18)	−1.49 (18)
<i>ELM ETo Model 1</i>	2.4 (1)	1.86 (1)	2.07 (1)	2.98 (1)	1.85 (1)	1.91 (1)	1.47 (1)	2.08 (1)	2.22 (1)	2.2 (1)	2.6 (2)	2.2 (1)	2.34 (4)	1.75 (1)
<i>ELM ETo Model 2</i>	−0.49 (13)	−0.05 (10)	−0.54 (13)	−0.82 (12)	−0.5 (12)	−0.16 (10)	−0.24 (11)	−1.78 (18)	−0.04 (11)	−0.78 (13)	−0.86 (12)	−0.72 (13)	−0.31 (11)	−0.27 (16)
<i>ELM ETo Model 3</i>	−0.56 (14)	−0.29 (12)	−0.8 (15)	−1.04 (14)	−0.7 (15)	−0.66 (12)	−0.32 (15)	−1.84 (19)	−0.53 (13)	−0.89 (17)	−1.32 (14)	−0.98 (16)	−0.68 (14)	−0.2 (14)
<i>ELM ETo Model 4</i>	2.01 (6)	1.56 (3)	1.9 (3)	2.72 (5)	1.75 (3)	1.41 (5)	1.34 (4)	1.73 (6)	1.62 (4)	2.03 (3)	2.29 (4)	2.04 (4)	1.72 (6)	1.63 (4)
<i>ELM ETo Model 5</i>	2.35 (3)	1.53 (5)	1.84 (5)	2.78 (3)	1.67 (6)	1.66 (3)	1.06 (5)	1.93 (4)	1.52 (5)	1.88 (5)	2.27 (5)	1.84 (7)	2.36 (3)	1.09 (7)
<i>ELM ETo Model 6</i>	1.93 (8)	1.25 (8)	1.68 (7)	2.56 (8)	1.62 (7)	1.23 (8)	1.02 (7)	1.62 (8)	1.18 (8)	1.82 (7)	1.92 (7)	1.8 (8)	1.63 (8)	1.11 (5)
<i>ELM ETo Model 7</i>	−1.08 (17)	−0.44 (14)	−0.89 (16)	−1.15 (15)	−0.77 (17)	−0.8 (16)	−0.35 (16)	−1.54 (14)	−1.14 (15)	−0.84 (15)	−1.32 (13)	−1.08 (17)	−0.8 (16)	−0.25 (15)
<i>ELM ETo Model 8</i>	−1.34 (20)	−1.32 (17)	−1.26 (19)	−1.46 (18)	−1.22 (19)	−1.06 (17)	−1.02 (18)	−1.49 (12)	−1.92 (18)	−1.38 (18)	−2.18 (19)	−1.42 (18)	−1.32 (17)	−1.54 (19)

Notes: (1) Numbers inside the parenthesis indicate the ranking from best to least model for station (along column).

(2) Highlight colors of models indicate the input or independent variables considered, i.e.,

f (T)	f (T, Rs)	f (T, Rs, Uz)	f (T, RH, Rs)	f (T, RH, Rs, Uz)
--------------	------------------	----------------------	----------------------	--------------------------

3.2. Comparison across Machine Learning Models

3.2.1. Comparison of Models across Input Combinations

Overall, models with R_s data as the input variable, such as Models 1, 4, 5, and 6, performed best both in SVM and ELM, with excellent results based on their values of RRMSE and NSE. R_s data represent the solar resources in a specific location available to vaporize water, which is considered an important factor, together with air temperature, for the occurrence of ETo [1]. In particular, the estimates of Model 1 perfectly fitted the actual value of FAO-56 PM, with the R^2 ranging from 0.95 to 0.99, an RMSE of 0.07 to 0.22 mm/day, an RRMSE of 1.72 to 5.44%, an MAE of 0.04 to 0.13 mm/day, and an NSE of 0.95 to 0.99. On average, the estimates of Model 1 are only 1.4 to 4.0% divergent from the standard FAO-56 PM daily ETo. On the other hand, Model 2, which has the same input combination as Model 1, except that it has R_a instead of R_s , performed satisfactorily, with an R^2 of 0.62–0.82, RMSE of 0.45 to 0.77 mm/day, RRMSE of 12.82 to 20.03%, MAE of 0.35 to 0.62 mm/day, and NSE of 0.51 to 0.82. The estimates of Model 2 are 12.61 to 19.83% on average divergent from the standard FAO-56 PM daily ETo. This shows the importance of R_s in the estimation of ETo, which cannot be replaced with extraterrestrial solar radiation R_a , even with the presence of both RH and U_z data.

TSR-based Model 4 and TSW-based Model 5 show relatively comparable performances based on the average statistical indicators. On average, the estimated daily ETos of Model 4 and Model 5 are only 2.4 to 8.1% and 3.4 to 7.6% divergent from the standard FAO-56 PM daily ETo, respectively. Model 4 fitted with R^2 ranging from 0.89 to 0.99, an RMSE of 0.10 to 0.33 mm/day, an RRMSE of 2.9 to 8.5%, an MAE of 0.07 to 0.22 mm/day, and an NSE of 0.91 to 0.99, while Model 5 fitted with R^2 ranges 0.92 to 0.98, an RMSE of 0.12 to 0.29 mm/day, an RRMSE of 3.2 to 6.8%, an MAE of 0.09 to 0.18 mm/day, and an NSE of 0.95 to 0.98. When compared to Model 1, Models 4 and 5 RMSE decreased by 44.4%, or 0.06 mm/day, and MAE decreased by 38.9% or 0.04 mm/day. Nevertheless, considering the GPI ranking, Model 5 performed better than Model 4 at the UPLB, Alabat, and Ambulong stations, while the opposite was observed for the other stations.

3.2.2. Comparison of Models between SVM and ELM

Based on the computed statistical indicators, the SVM developed using the RBF kernel and the ELM model generally exhibited identical performances in estimating daily ETo for all stations and all input combinations, during both the model development and evaluation phases, with average differences in RMSE of 0.002 mm/day and in MAE of 0.003 mm/day. In terms of GPI ranking, ELM performed better than SVM for most stations and model inputs, especially in the model evaluation phase. This observation shows that during the model evaluation phase, the ELM model tends to overfit the data, as evidenced by the almost negligible values of ME.

Table 13 presents the average run time, or the time used for the computation, of the SVM and ELM models for ETo estimation. The time needed for running the SVM models ranged from 79.21 to 223.62 s, while the ELM models displayed a lower range, from 83.99 to 98.94 s. For the SVM models, it can be observed that the models with higher accuracy, such as Models 1, 4, 5, and 6, have a relatively faster run time compared to the other models. This can be attributed to the lower time spent in the optimization of hyperparameters through grid searching. Overall, running an ELM model for ETo estimation is almost two times faster than running SVM models. Given that SVM and ELM models can achieve identical accuracy in ETo estimation in the region, ELM is preferred when run time is considered.

Table 13. Average run time (in seconds) of SVM and ELM under different input combinations in the estimation of daily ETo.

Model	Input Combinations	SVM	ELM
Model 1	$T_{\max}, T_{\min}, RH, R_s, U_z$	79.21	96.61
Model 2	$T_{\max}, T_{\min}, RH, R_a, U_z$	211.14	98.94
Model 3	$T_{\max}, T_{\min}, RH, U_z$	209.93	92.88
Model 4	$T_{\max}, T_{\min}, RH, R_s$	130.37	87.08
Model 5	$T_{\max}, T_{\min}, R_s, U_z$	116.71	87.01
Model 6	T_{\max}, T_{\min}, R_s	169.29	87.10
Model 7	T_{\max}, T_{\min}, RH	223.62	86.00
Model 8	T_{\max}, T_{\min}	169.07	83.99

3.3. Comparison between Empirical and Machine Learning Models

In general, the accuracy of SVM and ELM models in estimating daily ETo is much better compared to empirical models. This is apparent from the ranking of the computed GPIs of all studied models across stations in Table 12. When comparing models with inputs of only air temperature, we see that Model 8 of the machine learning model achieves better performance than the Hargreaves–Samani equation, with an average increase in R^2 of 44.4%, RMSE of 33.5% or 0.37 mm/day, and MAE of 30.7% or 0.26 mm/day. Based on the values of both RRMSE and NSE, the Hargreaves–Samani equation has a poor modeling capability, while Model 8 is concluded to be acceptable. On the average, estimates of Model 8 are 16.4 to 24.5% divergent from the actual values, which is relatively better than the 26.9 to 39.1% of the Hargreaves–Samani equation.

Empirical models with R_s as one of the inputs (TSR-, TSW-, and TS-based) proved to have an acceptable to satisfactory modeling capability, based on the computed average RRMSE and NSE across stations. With the same input combinations, machine learning models provided an improved performance with excellent results (RRMSE < 10% and NSE > 0.8). Compared to the best TS-based model, Model 6 of the machine learning models improved the RMSE by 62% or 0.41 mm/day, and MAE by 71.0% or 0.42 mm/day. The estimates of Model 6 deviate by 3.5 to 8.0% on average from the actual values, which is relatively better than the 9.85 to 24.4% of TS-based models. On the other hand, Model 5, when compared to its analogous TSW-based Matt–Shuttleworth equation, achieves an average increase in accuracy of 76.5% or 0.46 mm/day in terms of RRMSE, and 75.2% or 0.39 mm/day in terms of MAE. The estimates of Model 5 are on average deviant from the actual value by 3.4 to 7.6%, which is better than the Matt–Shuttleworth equation, which is off by 7.4 to 23.7%. Lastly, when Model 4 of both SVM and ELM models is compared to the TSR-based Turc equation which is the best performing empirical model for this study, a significant improvement can still be observed, as there is an average increase in RRMSE of 57.5% or 0.2 mm/day, and in MAE of 58.2% or 0.17 mm/day. The estimates of Model 4 are off by only 2.4 to 8.2%, while the Turc estimate is off by 7.1 to 12.5%. The results show the ability of machine learning models to handle complex nonlinear relationships between independent variables and dependent variables when estimating daily ETo [23,32].

3.4. Comparison of the Average Monthly ETo: The Case of UPLB and Tanay Stations

The plots of the monthly average values, computed via the simulated daily ETo for all empirical and machine learning models, are shown in Figures 3 and 4 for the UPLB and Tanay stations, respectively. Among the studied empirical models, the average monthly daily estimates of the Turc equation excellently resemble the FAO-56 PM for the UPLB station (RMSE of 0.129 MJ/m²/day and NSE of 0.969). In the case of the Tanay station, the Makkink equation performed best (RMSE of 0.216 MJ/m²/day and NSE of 0.869). For both stations, the average monthly daily ETo computed via the Matt–Shuttleworth equation tended to be below the FAO-56 PM ETo, while the Priestley–Taylor equation overshot it. The T-based Hargreaves equation tended to overestimate the FAO-56 PM monthly and

daily average ETo for the Tanay station throughout the whole year, but it only did so during the rainy seasons (JJA and SON) at the UPLB stations.

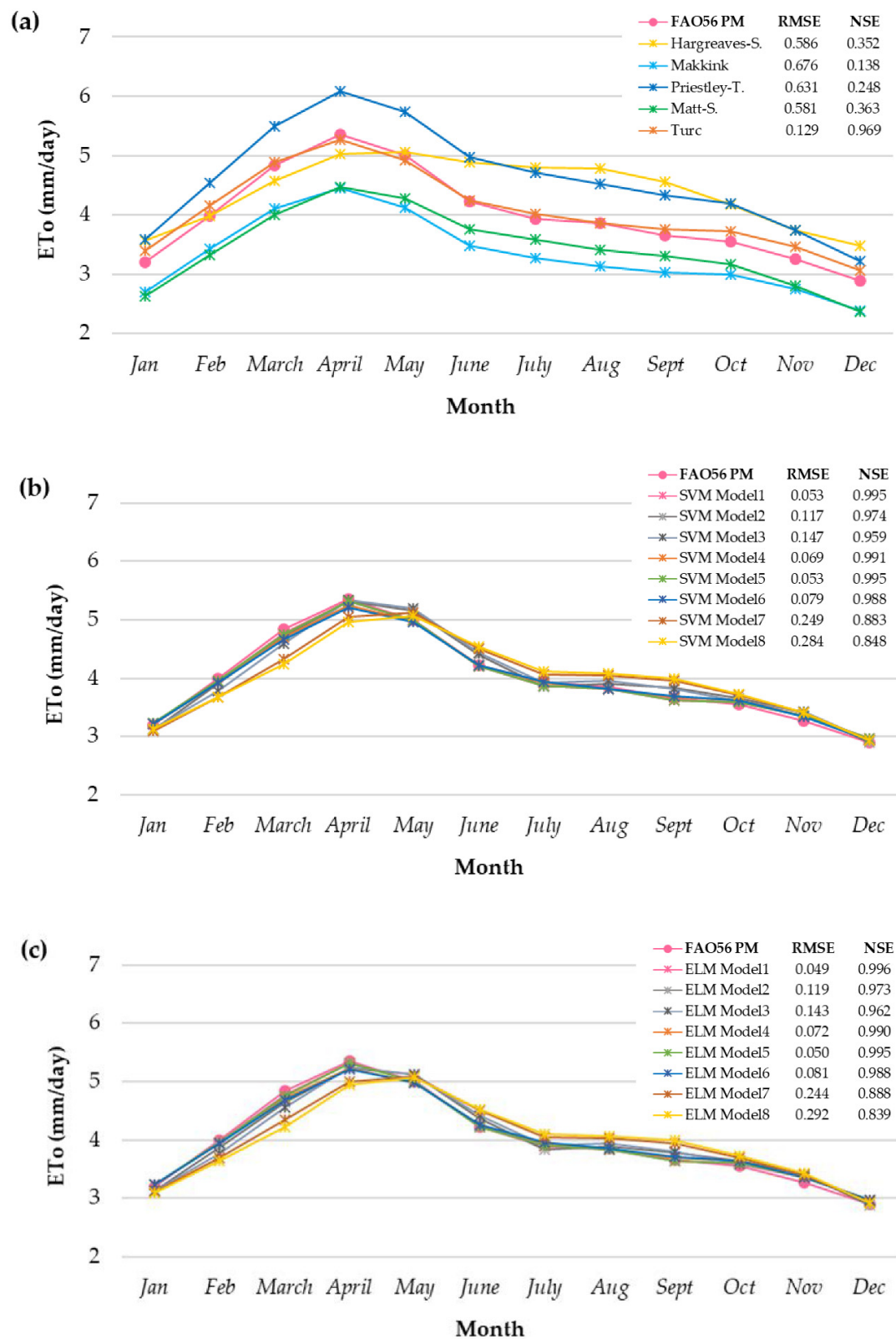


Figure 3. Plots of monthly average daily ETo at the UPLB station estimated from (a) empirical equations, and calibrated machine learning models of (b) Support Vector Machine and (c) Extreme Learning Machine.

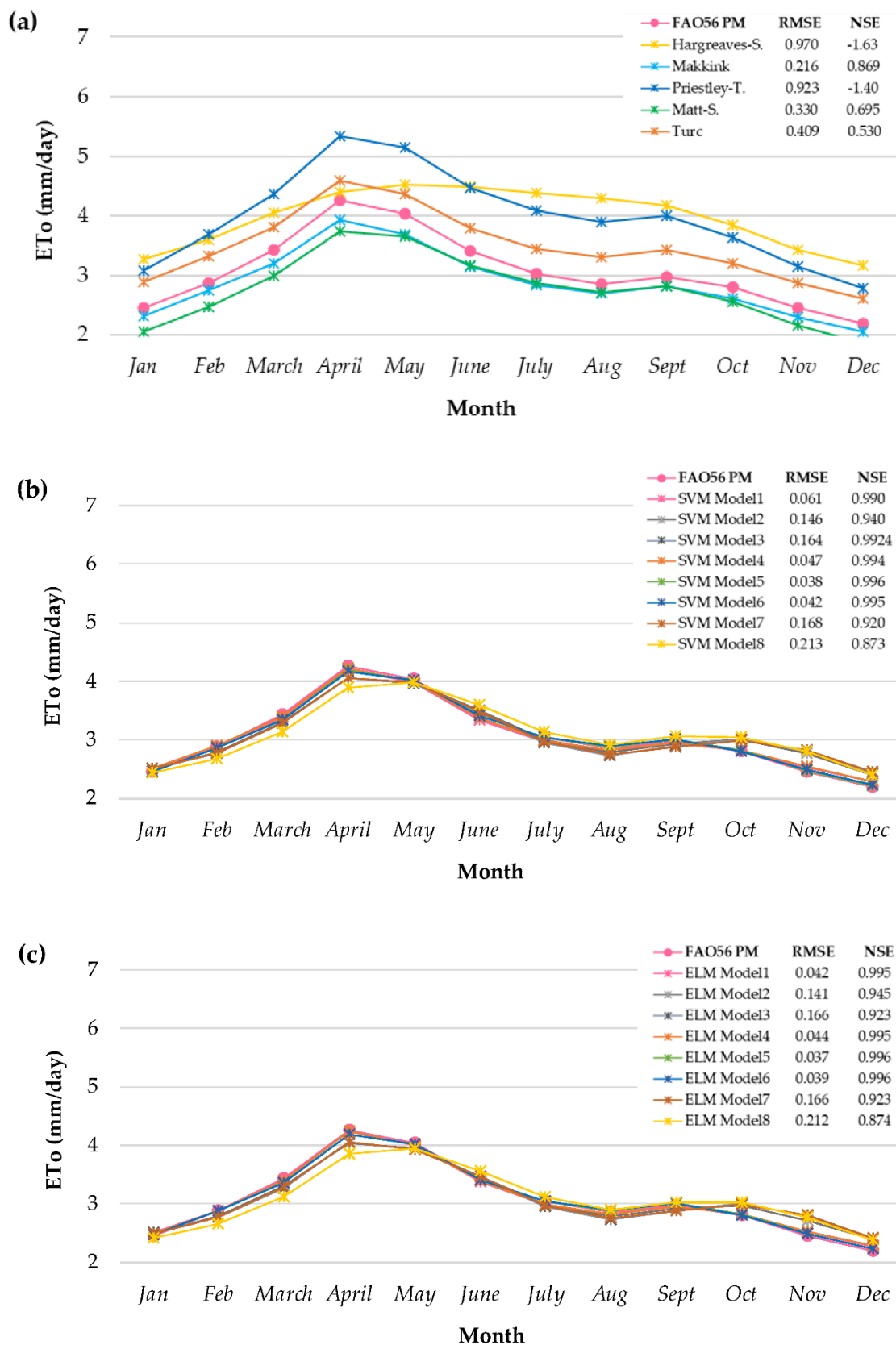


Figure 4. Plots of monthly average daily ETo at the Tanay station, estimated from (a) Empirical equations, and calibrated machine learning models of (b) Support Vector Machine and (c) Extreme Learning Machine.

The average monthly ETo based on daily values computed via the SVM and ELM models, with any input combinations, proved to have a relatively high level of accuracy with $NSE > 0.8$, which showed a closely reflected behavior of the monthly values based on FAO56-PM daily ETo. This proves that even with minimum inputs of air temperature data (Model 8), machine learning models can reliably and satisfactorily estimate ETo on a daily, monthly, and seasonal basis. The daily record of ETo is important in irrigation scheduling and hydrologic modeling, while monthly or seasonal estimates are necessary baseline data for irrigation system and reservoir designs, as well as water right determination [3].

4. Conclusions

Reliable data are key to forming good hydrological models and engineering designs. In particular, accurate estimates of ETo are important in irrigation planning and design, irrigation scheduling, reservoir management among other applications. This study developed models based on SVM with an RBF non-linear kernel function, and on ELM, for estimating daily reference crop evapotranspiration in Region IV-A, Philippines, using limited meteorological input data. The machine learning models developed were compared with five other established empirical models in terms of accuracy in daily ETo estimation. The results show that the calibrated SVM and ELM models, with at least T_{max} , T_{min} and R_s as inputs, provide the best daily ETo estimates. When compared to empirical models with analogous data inputs, the ELM and SVM models achieved higher accuracies, with RMSE values of at least 0.2 mm/day, and MAE values of 0.17 mm/day. Overall, the ELM and SVM models achieved similar modeling performances, although the former exhibited shorter run times than the latter. These machine learning models, with proper simulations and optimization, could achieve excellent performance in terms of accuracy.

Author Contributions: A.T.T.J. and V.B.E. developed the concept and methodology. A.T.T.J. performed model simulation from the model development and evaluation and wrote the initial draft. V.B.E., R.M.L. and C.E.R. improved the content and structure of the final paper. All authors have read and agreed to the published version of the manuscript.

Funding: This research was carried out with the support of Department of Science and Technology—Engineering Research and Development Technology (DOST-ERDT) scholarship of the corresponding author and the Commission on Higher Education—Philippine–California Research Institutes (CHED-PCARI).

Data Availability Statement: Restrictions apply to the availability of the ground-based datasets. Data obtained from the DOST-PAGASA Central Station and the National Solar Radiation Center were requested through the online platform ClimaDatPh, while datasets from DOST-ASTI and DA-BSWM are available upon request from the agency (Retamar, A.E., et al. (2021). *Meteorological Data Acquisition Stations for Information Dissemination* (PCT/PH2021/050022)). NASA Power R_s data are available and can be accessed here: <https://power.larc.nasa.gov/data-access-viewer/>. (Last accessed: 17 January 2022).

Acknowledgments: This study was supported by the DOST-ERDT and by the CHED-PCARI WiSEIr Project. The authors would like to thank the DOST-PAGASA, DOST-ASTI, DA-BSWM and NASA-POWER for providing the data used in this study.

Conflicts of Interest: The authors declare no conflict of interest.

References

1. Allen, R.G.; Pereira, L.S.; Raes, D.; Smith, M. *FAO Irrigation and Drainage Paper No. 56 Crop Evapotranspiration (Guidelines for Computing Crop Water Requirements)*; Food and Agriculture Organization (FAO): Rome, Italy, 1998.
2. Pereira, L.S.; Allen, R.G.; Smith, M.; Raes, D. Crop evapotranspiration estimation with FAO56: Past and future. *Agric. Water Manag.* **2015**, *147*, 4–20. [CrossRef]
3. UPLB-AMTEC. *PAES 217: Determination of Irrigation Water Requirements*; University of the Philippines Los Baños—Agricultural Machinery Testing and Evaluation Center: Los Baños, Philippines, 2017; ISBN 6506035.
4. Ghat, I.; Mackey, H.R.; Al-Ansari, T. A review of evapotranspiration measurement models, techniques and methods for open and closed agricultural field applications. *Water* **2021**, *13*, 2523. [CrossRef]

5. Ella, V.B. Simple hydrologic model for predicting streamflow in small watersheds for irrigation system planning. *Int. Agric. Eng. J.* **2016**, *25*, 1–13.
6. Ricard, S.; Sylvain, J.D.; Anctil, F. Asynchronous Hydroclimatic Modeling for the Construction of Physically Based Streamflow Projections in a Context of Observation Scarcity. *Front. Earth Sci.* **2020**, *8*, 556781. [\[CrossRef\]](#)
7. Birhanu, D.; Kim, H.; Jang, C.; Park, S. Does the complexity of evapotranspiration and hydrological models enhance robustness? *Sustainability* **2018**, *10*, 2837. [\[CrossRef\]](#)
8. Mendicino, G.; Senatore, A. The Role of Evapotranspiration in the Framework of Water Resource Management and Planning Under Shortage Conditions. In *Evapotranspiration—Remote Sensing and Modeling*; Irmak, A., Ed.; InTech: Rijeka, Croatia, 2012; ISBN 978-953-307-808-3. [\[CrossRef\]](#)
9. Zamora, D.; Rodríguez, E.; Jaramillo, F. Hydroclimatic effects of a hydropower reservoir in a tropical hydrological basin. *Sustainability* **2020**, *12*, 6795. [\[CrossRef\]](#)
10. Ella, V.B. *Simulating the Hydraulic Effects of Climate Change on Groundwater Resources in a Selected Aquifer in the Philippines Using a Numerical Groundwater Model*; SEARCA: Los Baños, Philippines, 2011; ISBN 9788420548470.
11. Liu, W.; Yang, L.; Zhu, M.; Adamowski, J.F.; Barzegar, R.; Wen, X.; Yin, Z. Effect of elevation on variation in reference evapotranspiration under climate change in northwest china. *Sustainability* **2021**, *13*, 151. [\[CrossRef\]](#)
12. Mu, X.; Wang, H.; Zhao, Y.; Liu, H.; He, G.; Li, J. Streamflow into Beijing and its response to climate change and human activities over the period 1956–2016. *Water* **2020**, *12*, 622. [\[CrossRef\]](#)
13. Vicente-Serrano, S.M.; Beguería, S.; López-Moreno, J.I. A multiscale drought index sensitive to global warming: The standardized precipitation evapotranspiration index. *J. Clim.* **2010**, *23*, 1696–1718. [\[CrossRef\]](#)
14. Tian, L.; Leason, Z.T.; Quiring, S.M. Developing a hybrid drought index: Precipitation Evapotranspiration Difference Condition Index. *Clim. Risk Manag.* **2020**, *29*, 100238. [\[CrossRef\]](#)
15. Mehdizadeh, S.; Mohammadi, B.; Pham, Q.B.; Duan, Z. Development of boosted machine learning models for estimating daily reference evapotranspiration and comparison with empirical approaches. *Water* **2021**, *13*, 3489. [\[CrossRef\]](#)
16. Peng, L.; Li, Y.; Feng, H. The best alternative for estimating reference crop evapotranspiration in different sub-regions of mainland China. *Sci. Rep.* **2017**, *7*, 5458. [\[CrossRef\]](#) [\[PubMed\]](#)
17. Hargreaves, G.; Samani, Z. Reference crop evapotranspiration from ambient air temperature. *Am. Soc. Agric. Eng.* **1985**, *1*, 96–99. [\[CrossRef\]](#)
18. De Bruin, H. The determination of (reference crop) evapotranspiration from routine weather data. *Comm. Hydrol. Res.* **1981**, *28*, 25–37.
19. Priestley, C.; Taylor, R. On the assessment of surface heat flux and evaporation using large-scale parameters. *Mon. Weather Rev.* **1972**, *100*, 81–92. [\[CrossRef\]](#)
20. Shuttleworth, W.; Wallace, J. Calculating the water requirements of irrigated crops in Australia using the Matt-Shuttleworth approach. *Trans. ASABE* **2009**, *52*, 1895–1906. [\[CrossRef\]](#)
21. Turc, L. Estimation of irrigation water requirements, potential evapotranspiration: A simple climatic formula evolved up to date. *Ann. Agron.* **1961**, *12*, 13–49.
22. Chia, M.Y.; Huang, Y.F.; Koo, C.H. Support vector machine enhanced empirical reference evapotranspiration estimation with limited meteorological parameters. *Comput. Electron. Agric.* **2020**, *175*, 105577. [\[CrossRef\]](#)
23. Ferreira, L.B.; da Cunha, F.F.; de Oliveira, R.A.; Fernandes Filho, E.I. Estimation of reference evapotranspiration in Brazil with limited meteorological data using ANN and SVM—A new approach. *J. Hydrol.* **2019**, *572*, 556–570. [\[CrossRef\]](#)
24. Seifi, A.; Riahi, H. Estimating daily reference evapotranspiration using hybrid gamma test-least square support vector machine, gamma test-ann, and gamma test-anfis models in an arid area of iran. *J. Water Clim. Chang.* **2020**, *11*, 217–240. [\[CrossRef\]](#)
25. Torres, A.F.; Walker, W.R.; McKee, M. Forecasting daily potential evapotranspiration using machine learning and limited climatic data. *Agric. Water Manag.* **2011**, *98*, 553–562. [\[CrossRef\]](#)
26. Samuel, A.L. Some Studies in Machine Learning. *IBM J. Res. Dev.* **1959**, *3*, 210–229. [\[CrossRef\]](#)
27. Subasi, A. *Practical Machine Learning for Data Analysis Using Python*; Elsevier: London, UK, 2020; ISBN 9780128213797. [\[CrossRef\]](#)
28. Feng, Y.; Cui, N.; Zhao, L.; Hu, X.; Gong, D. Comparison of ELM, GANN, WNN and empirical models for estimating reference evapotranspiration in humid region of Southwest China. *J. Hydrol.* **2016**, *536*, 376–383. [\[CrossRef\]](#)
29. Gocic, M.; Petković, D.; Shamshirband, S.; Kamsin, A. Comparative analysis of reference evapotranspiration equations modelling by extreme learning machine. *Comput. Electron. Agric.* **2016**, *127*, 56–63. [\[CrossRef\]](#)
30. Ehteram, M.; Singh, V.P.; Ferdowsi, A.; Mousavi, S.F.; Farzin, S.; Karami, H.; Mohd, N.S.; Afan, H.A.; Lai, S.H.; Kisi, O.; et al. An improved model based on the support vector machine and cuckoo algorithm for simulating reference evapotranspiration. *PLoS ONE* **2019**, *14*, e0217499. [\[CrossRef\]](#) [\[PubMed\]](#)
31. Kumar, D.; Adamowski, J.; Suresh, R.; Ozga-Zielinski, B. Estimating Evapotranspiration Using an Extreme Learning Machine Model: Case Study in North Bihar, India. *J. Irrig. Drain. Eng.* **2016**, *142*, 04016032. [\[CrossRef\]](#)
32. Fan, J.; Yue, W.; Wu, L.; Zhang, F.; Cai, H.; Wang, X.; Lu, X.; Xiang, Y. Evaluation of SVM, ELM and four tree-based ensemble models for predicting daily reference evapotranspiration using limited meteorological data in different climates of China. *Agric. For. Meteorol.* **2018**, *263*, 225–241. [\[CrossRef\]](#)

33. Yin, Z.; Feng, Q.; Yang, L.; Deo, R.C.; Wen, X.; Si, J.; Xiao, S. Future projection with an extreme-learning machine and support vector regression of reference evapotranspiration in a mountainous inland watershed in north-west China. *Water* **2017**, *9*, 880. [CrossRef]
34. Bellido-Jiménez, J.A.; Estévez, J.; García-Marín, A.P. New machine learning approaches to improve reference evapotranspiration estimates using intra-daily temperature-based variables in a semi-arid region of Spain. *Agric. Water Manag.* **2021**, *245*, 106558. [CrossRef]
35. Wu, J.; Chen, X.Y.; Zhang, H.; Xiong, L.D.; Lei, H.; Deng, S.H. Hyperparameter optimization for machine learning models based on Bayesian optimization. *J. Electron. Sci. Technol.* **2019**, *17*, 26–40. [CrossRef]
36. Syarif, I.; Prugel-Bennett, A.; Wills, G. SVM Parameter Optimization using Grid Search and Genetic Algorithm to Improve Classification Performance. *TELKOMNIKA Telecommun. Comput. Electron. Control.* **2016**, *14*, 1502. [CrossRef]
37. Wainer, J.; Cawley, G. Empirical evaluation of resampling procedures for optimising SVM hyperparameters. *J. Mach. Learn. Res.* **2017**, *18*, 1–35.
38. Patil, A.P.; Deka, P.C. An extreme learning machine approach for modeling evapotranspiration using extrinsic inputs. *Comput. Electron. Agric.* **2016**, *121*, 385–392. [CrossRef]
39. Wen, X.; Si, J.; He, Z.; Wu, J.; Shao, H.; Yu, H. Support-Vector-Machine-Based Models for Modeling Daily Reference Evapotranspiration With Limited Climatic Data in Extreme Arid Regions. *Water Resour. Manag.* **2015**, *29*, 3195–3209. [CrossRef]
40. FAO. *Information and Communication Technology (ICT) in Agriculture: A Report to the G20 Agricultural Deputies*; FAO: Rome, Italy, 2017; Volume 22.
41. World Bank Group Future of Food. *Harnessing Digital Technologies to Improve Food Systems Outcome*; World Bank Group Future of Food: Washington, DC, USA, 2019.
42. Benos, L.; Tagarakis, A.C.; Dolias, G.; Berruto, R.; Kateris, D.; Bochtis, D. Machine learning in agriculture: A comprehensive updated review. *Sensors* **2021**, *21*, 3758. [CrossRef]
43. Mehrabi, Z.; McDowell, M.J.; Ricciardi, V.; Levers, C.; Martinez, J.D.; Mehrabi, N.; Wittman, H.; Ramankutty, N.; Jarvis, A. The global divide in data-driven farming. *Nat. Sustain.* **2021**, *4*, 154–160. [CrossRef]
44. Grossman, D.; Doyle, M.; Buckley, N. *Data Intelligence for 21st Century Water Management*; The Aspen Institute: Washington, DC, USA, 2015; ISBN 0898436311.
45. Liakos, K.G.; Busato, P.; Moshou, D.; Pearson, S. Machine Learning in Agriculture: A Review. *Sensor* **2018**, *18*, 2674. [CrossRef]
46. Villafuerte, M.I.Q.; Lambrento, J.C.R.; Ison, C.M.S.; Vicente, A.A.S.; de Guzman, R.G.; Juanillo, E.L. ClimDatPh: An Online Platform for Philippine Climate Data Acquisition. *Philipp. J. Sci.* **2021**, *150*, 53–66.
47. Tejada, A.T., Jr.; Ella, V.B.; Lampayan, R.M.; Reano, C.E. Assessment of the Accuracy of NASA-POWER Reanalysis Dataset for Estimating Daily Solar Radiation in Region IV-A, Philippines. In Proceedings of the 2021 Virtual ISSAAS National Scientific Congress, Los Baños, Philippines, 16–17 December 2021.
48. Bai, J.; Chen, X.; Dobermann, A.; Yang, H.; Cassman, K.G.; Zhang, F. Evaluation of nasa satellite-and model-derived weather data for simulation of maize yield potential in China. *Agron. J.* **2010**, *102*, 9–16. [CrossRef]
49. Negm, A.; Jabro, J.; Provenzano, G. Agricultural and Forest Meteorology Assessing the suitability of American National Aeronautics and Space Administration (NASA) agro-climatology archive to predict daily meteorological variables and reference evapotranspiration in Sicily, Italy. *Agric. For. Meteorol.* **2017**, *244–245*, 111–121. [CrossRef]
50. Sayago, S.; Ovando, G.; Almorox, J.; Bocco, M. Daily solar radiation from NASA-POWER product: Assessing its accuracy considering atmospheric transparency Daily solar radiation from NASA-POWER product: Assessing. *Int. J. Remote Sens.* **2019**, *41*, 897–910. [CrossRef]
51. White, J.W.; Hoogenboom, G.; Wilkens, P.W.; Stackhouse, P.W.; Hoel, J.M. Evaluation of satellite-based, modeled-derived daily solar radiation data for the continental United States. *Agron. J.* **2011**, *103*, 1242–1251. [CrossRef]
52. Guo, D.; Westra, S.; Maier, H.R. An R package for modelling actual, potential and reference evapotranspiration. *Environ. Model. Softw.* **2016**, *78*, 216–224. [CrossRef]
53. Vapnik, V.N. *The Nature of Statistical Learning Theory*; Springer: New York, NY, USA, 2000; ISBN 0-387-98780-0.
54. Rhys, H. *Machine Learning with R, the Tidyverse, and Mlr*; Manning Publications: New York, NY, USA, 2020.
55. Shekar, B.H.; Dagnew, G. Grid search-based hyperparameter tuning and classification of microarray cancer data. In Proceedings of the International Conference on Advanced Computational and Communication Paradigms (ICACCP), Gangtok, India, 25–28 February 2019; pp. 1–8. [CrossRef]
56. Huang, G.B.; Zhu, Q.Y.; Siew, C.K. Extreme learning machine: Theory and applications. *Neurocomputing* **2006**, *70*, 489–501. [CrossRef]
57. Fan, J.; Wang, X.; Wu, L.; Zhang, F.; Bai, H.; Lu, X. New combined models for estimating daily global solar radiation based on sunshine duration in humid regions: A case study in South China. *Energy Convers. Manag.* **2018**, *156*, 618–625. [CrossRef]
58. Zhang, J.; Xu, Y.; Xue, J.; Xiao, W. Real-time prediction of solar radiation based on online sequential extreme learning machine. In Proceedings of the IEEE Conference on Industrial Electronics and Applications (ICIEA), Wuhan, China, 31 May–2 June 2018; pp. 53–57. [CrossRef]
59. Hyndman, R.J.; Athanasopoulos, G. *Forecasting: Principles and Practice*, 2nd ed.; OTexts: Melbourne, Australia, 2013; Available online: <https://otexts.com/fpp2> (accessed on 17 January 2022).

60. Schnaubelt, M. *A Comparison of Machine Learning MODEL Validation Schemes for Non-Stationary Time Series Data*; Friedrich-Alexander-Universität Erlangen-Nürnberg, Institute for Economics: Nürnberg, Germany, 2019.
61. Varma, S.; Simon, R. Bias in error estimation when using cross-validation for model selection. *BMC Bioinform.* **2006**, *7*, 91. [[CrossRef](#)]
62. Despotovic, M.; Nedic, V.; Despotovic, D.; Cvetanovic, S. Review and statistical analysis of different global solar radiation sunshine models. *Renew. Sustain. Energy Rev.* **2015**, *52*, 1869–1880. [[CrossRef](#)]