

Subsurface Flow Phytoremediation Using Barley Plants for Water Recovery from Kerosene-Contaminated Water: Effect of Kerosene Concentration and Removal Kinetics

Mohanad J. M-Ridha¹, Muna Faeq Ali ¹, Ahmed Hussein Taly ², Khalid M. Abed ^{3,4}, Sabah J. Mohammed ¹, Mohd Hafizuddin Muhamad ^{5,6} and Hassimi Abu Hasan ^{5,6,*}

¹Environmental Engineering Department, College of Engineering, University of Baghdad, Baghdad 10071, Iraq; muhannadenviro@coeng.uobaghdad.edu.iq (M.J.M.-R.); munafaiq@coeng.uobaghdad (M.F.A.); eng.sabah1212@gmail.com (S.J.M.)

²College of Agriculture, University of Baghdad, Baghdad 10071, Iraq; ahmed_gili@yahoo.com

³Chemical Engineering Department, College of Engineering, University of Baghdad, Baghdad 10071, Iraq; khalid.chemical82@gmail.com

⁴Department of Chemical Engineering, Faculty of Engineering, University of Malaya, Kuala Lumpur 50603, Selangor, Malaysia

⁵Department of Chemical and Process Engineering, Faculty of Engineering and Built Environment, Universiti Kebangsaan Malaysia, 43600 Bangi, Selangor, Malaysia; ir_din84@yahoo.com.my

⁶Research Centre for Sustainable Process Technology (CESPRO), Faculty of Engineering and Built Environment, Universiti Kebangsaan Malaysia, 43600 Bangi, Selangor, Malaysia

* Correspondence: hassimi@ukm.edu.my, Tel. +60-38921-6402

Figure S1 Percentage of withered Barley in relation to kerosene concentrations

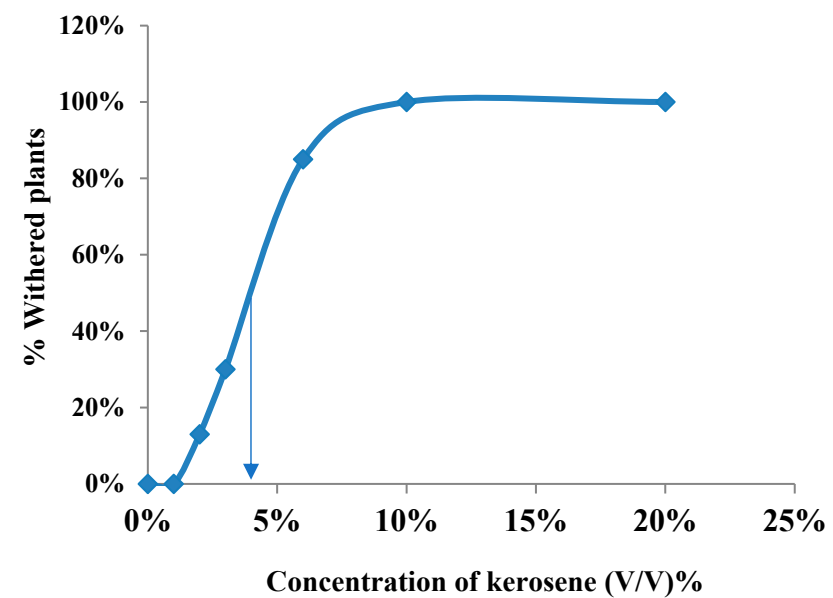
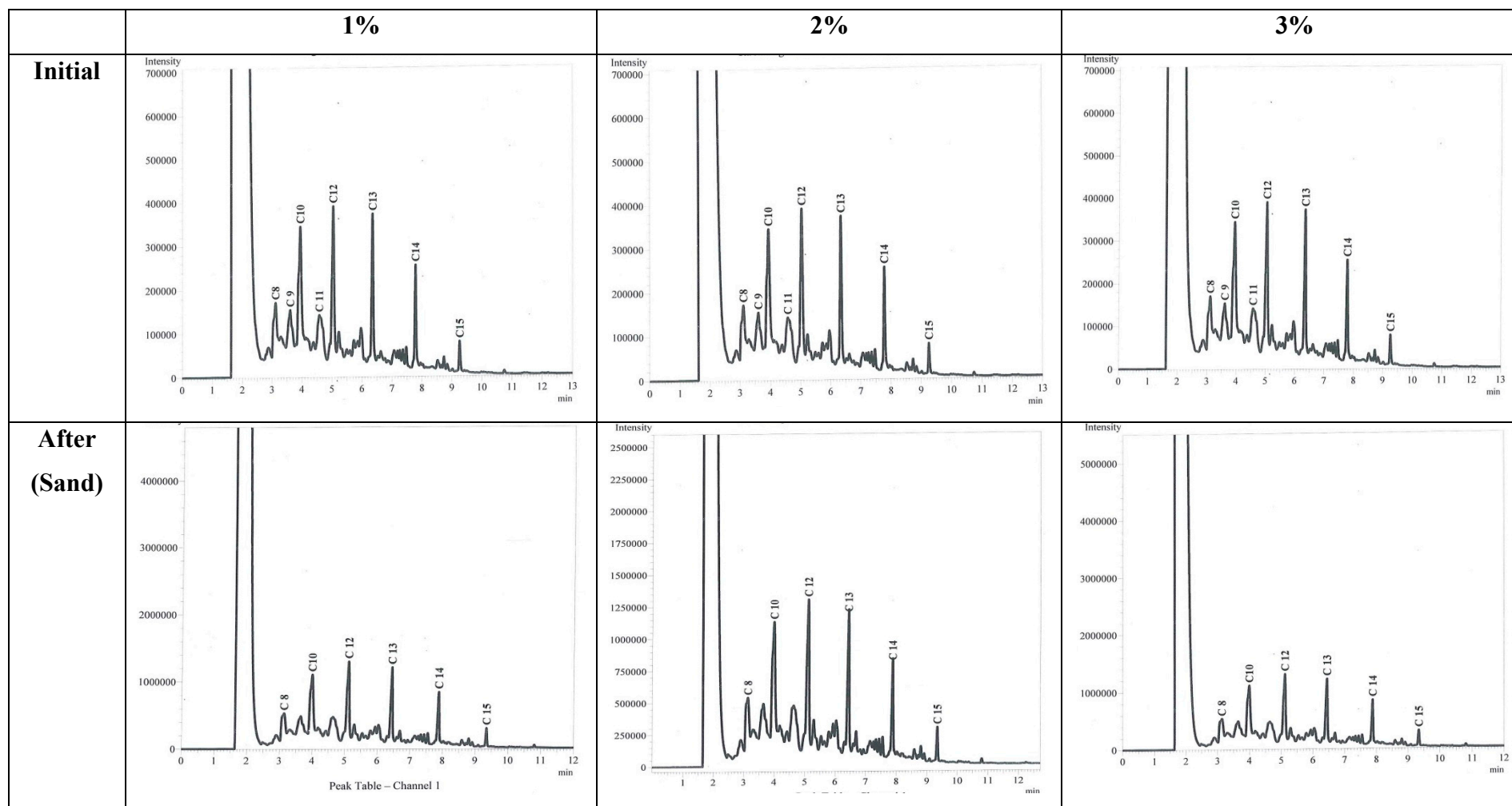


Figure S2 GC chromatograms at different concentration of kerosene



**After
(Plant)**

