

Figure S0 Map showing the locations of transect lines in the Tadewara mire and the Bougatsuru mire

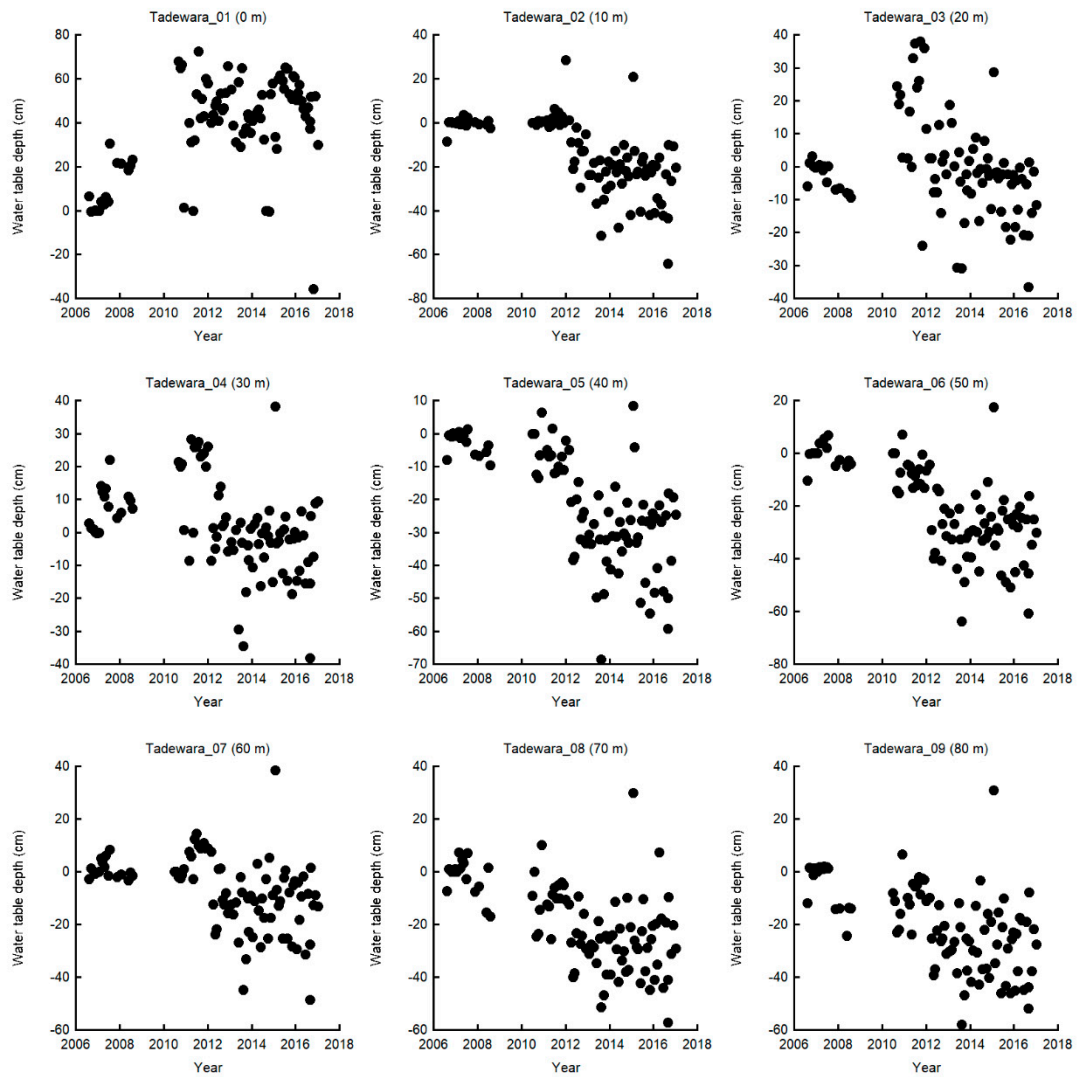


Figure S1(1) Water table depth at sites (No 1-9) on the Tadewara transect from August 10, 2006 to January 5, 2017. Data from August 2008 to May 2010 are missing.

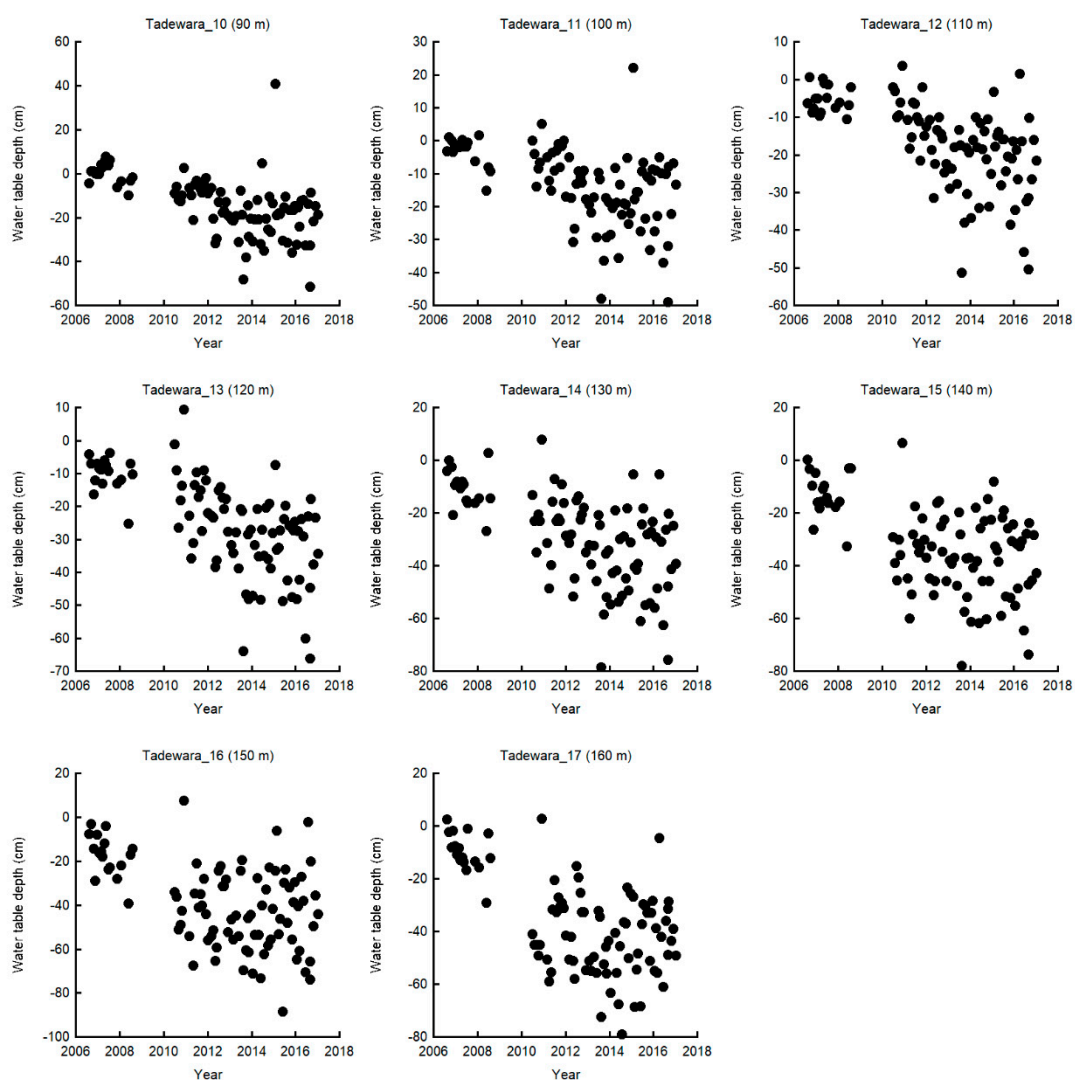


Figure S1(2) Water table depth at sites (No 10-17) on the Tadewara transect from August 10, 2006 to January 5, 2017. Data from August 2008 to May 2010 are missing.

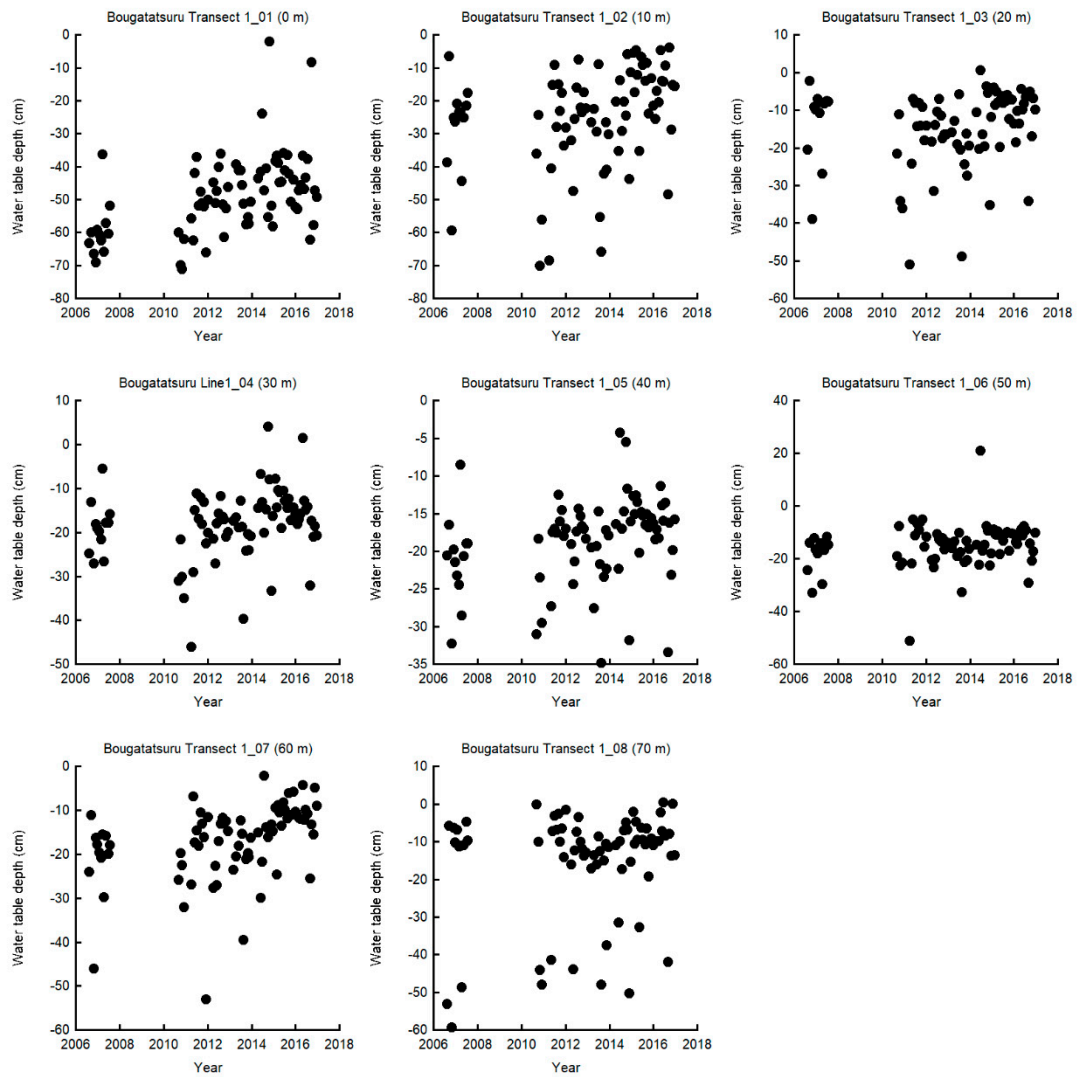


Figure S1(3) Water table depth at sites (No 1-9) on the Bougatatsuru transect No. 1 from August 9, 2006 to December 15, 2016. Data from August 2007 to July 2010 are missing.

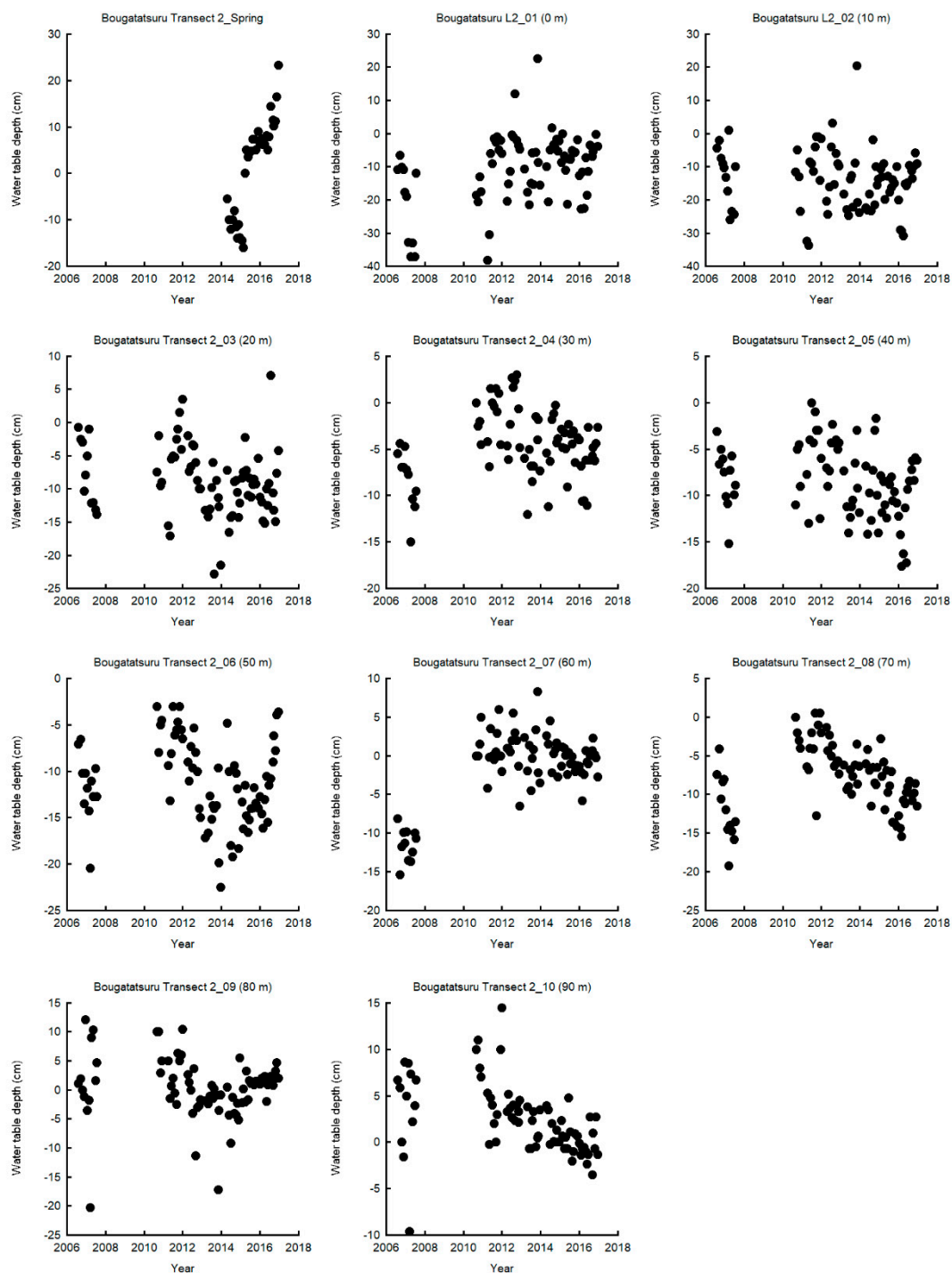


Figure S1(4) Water table depth at sites (spring and No 1-10) on the Bougatsuru transect No. 2 from August 9, 2006 to December 15, 2016. Data from August 2007 to July 2010 are missing.

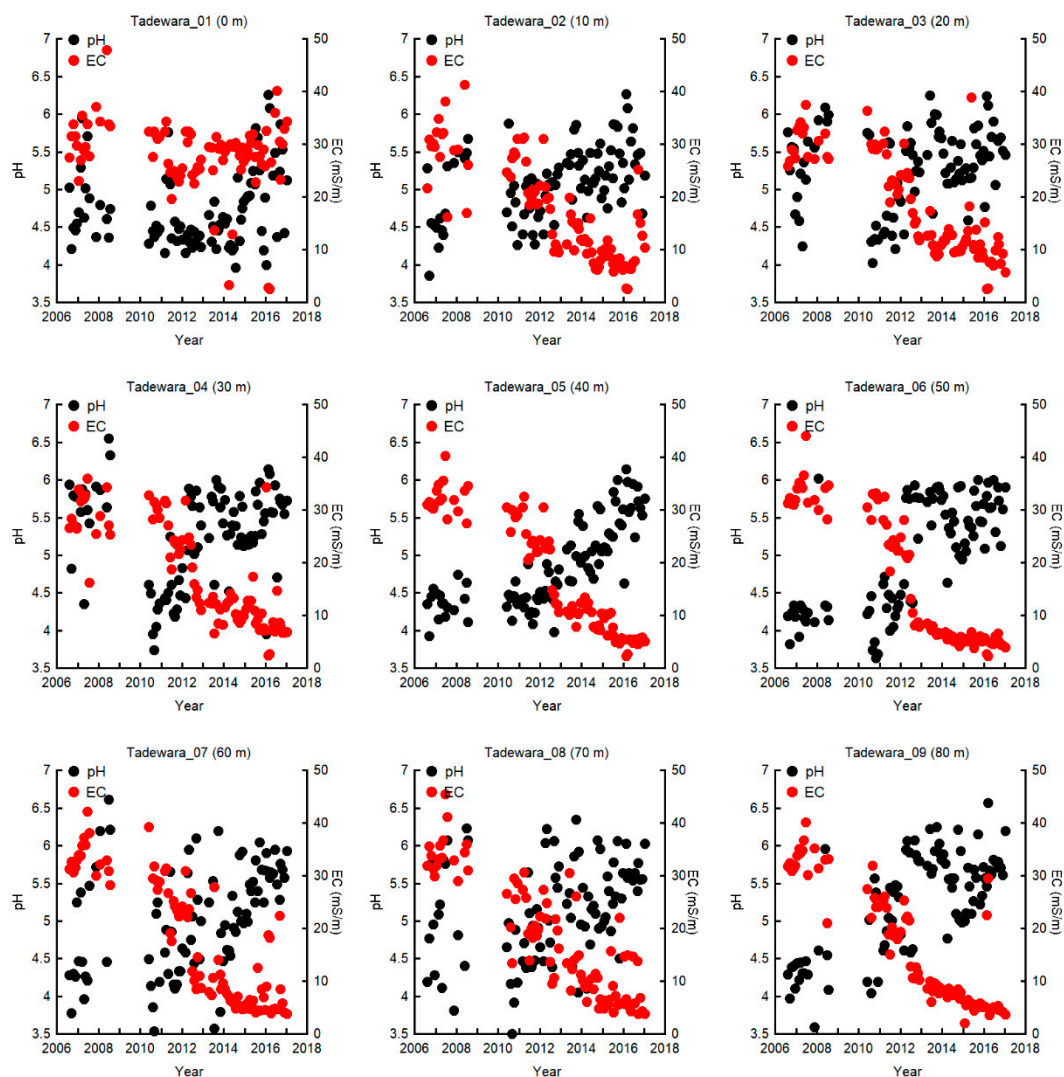


Figure S2(1) pH and EC of ground water at sites (No 1-9) on the Tadewara transect from August 10, 2006 to January 5, 2017. Data from August 2008 to May 2010 are missing.

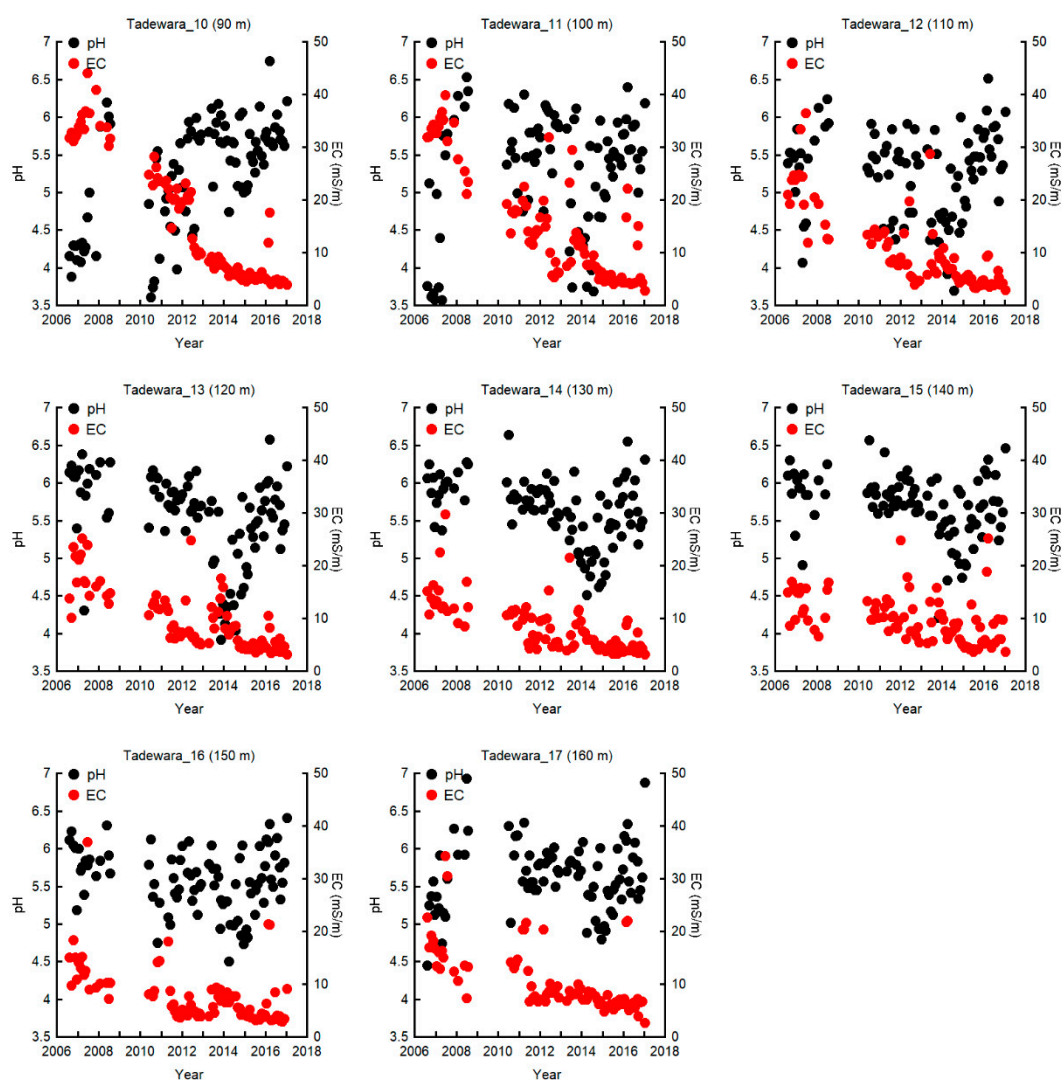


Figure S2(2) pH and EC of ground water at sites (No 10-17) on the Tadewara transect from August 10, 2006 to January 5, 2017. Data from August 2008 to May 2010 are missing.

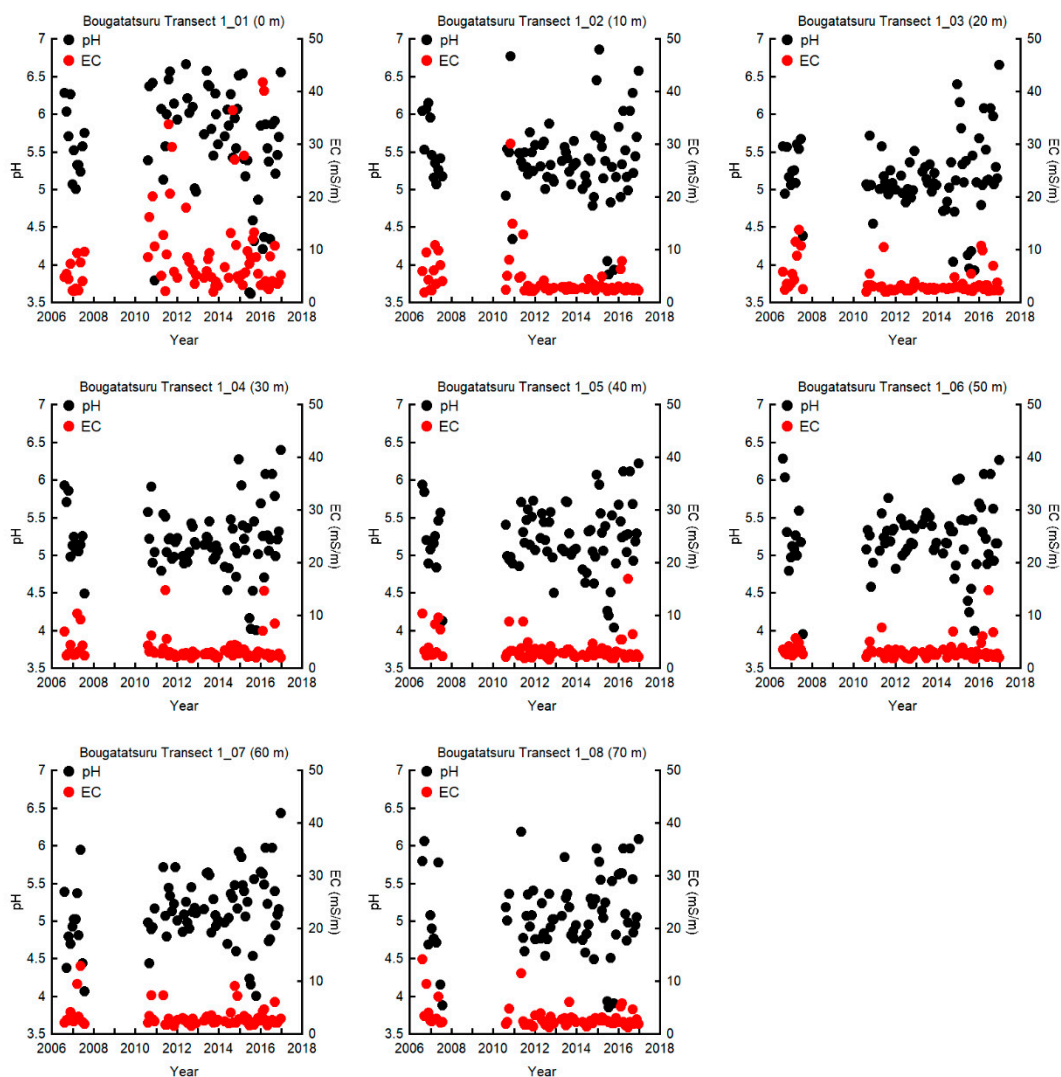


Figure S2(3) pH and EC of ground water at sites (No 1-9) on the Bougatsuru transect No. 1 from August 9, 2006 to December 15, 2016. Data from August 2007 to July 2010 are missing.

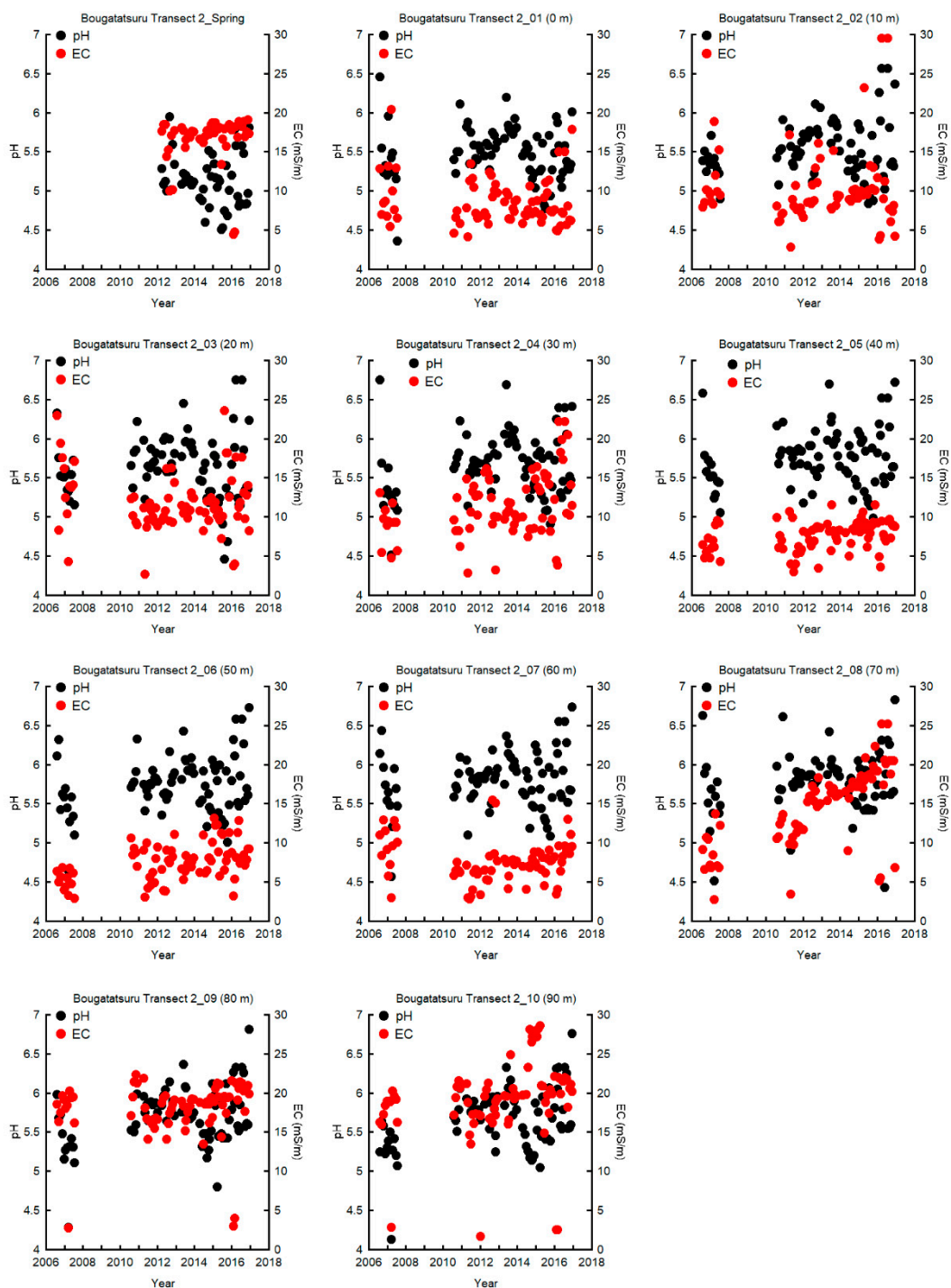


Figure S2(4) pH and EC of ground water at sites (spring and No 1-10) on the Bougatsuru transect No. 2 from August 9, 2006 to December 15, 2016. Data from August 2007 to July 2010 are missing.

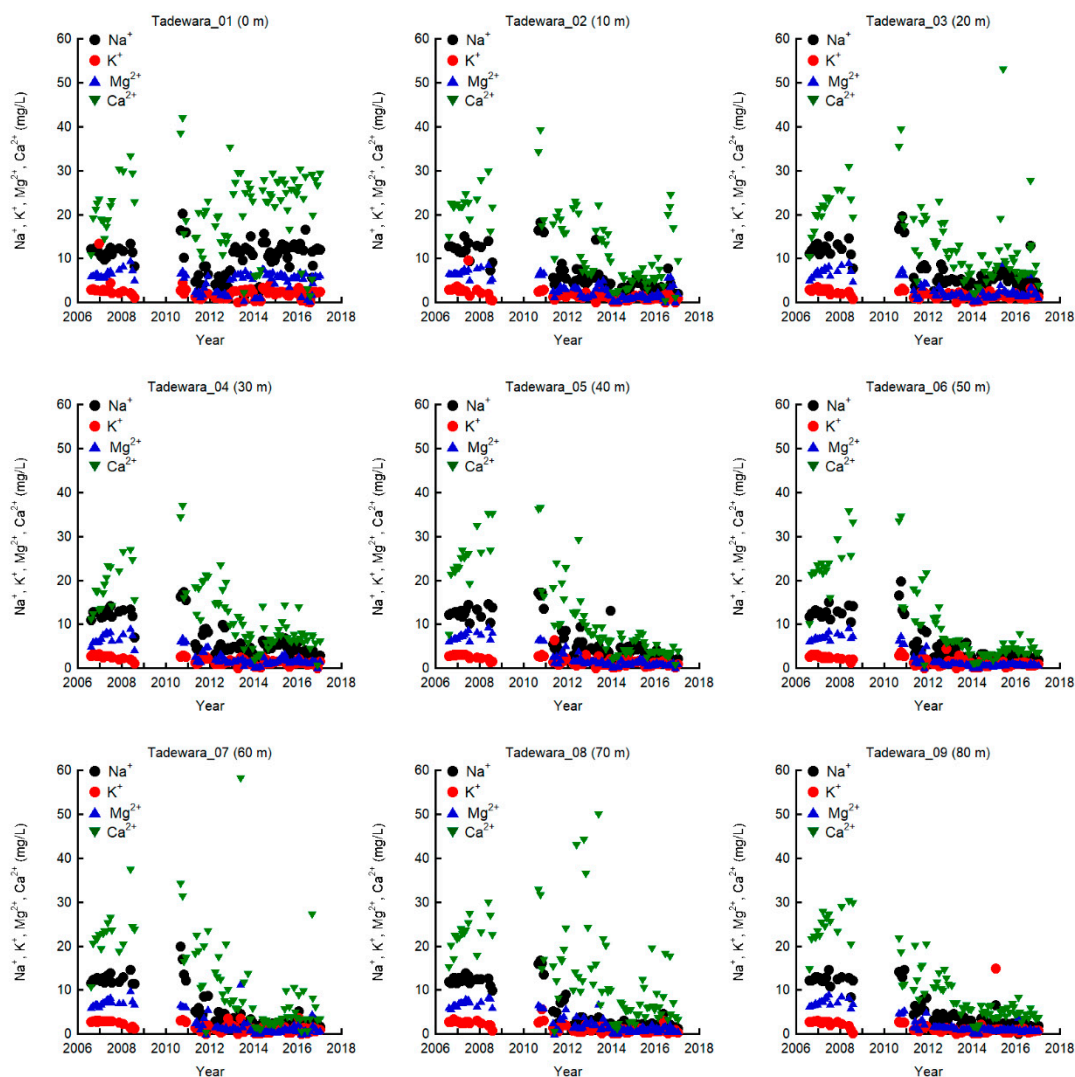


Figure S3(1) Na^+ , K^+ , Mg^{2+} , and Ca^{2+} concentrations of ground water at sites (No 1-9) on the Tadewara transect from August 10, 2006 to January 5, 2017. Data from August 2008 to May 2010 are missing.

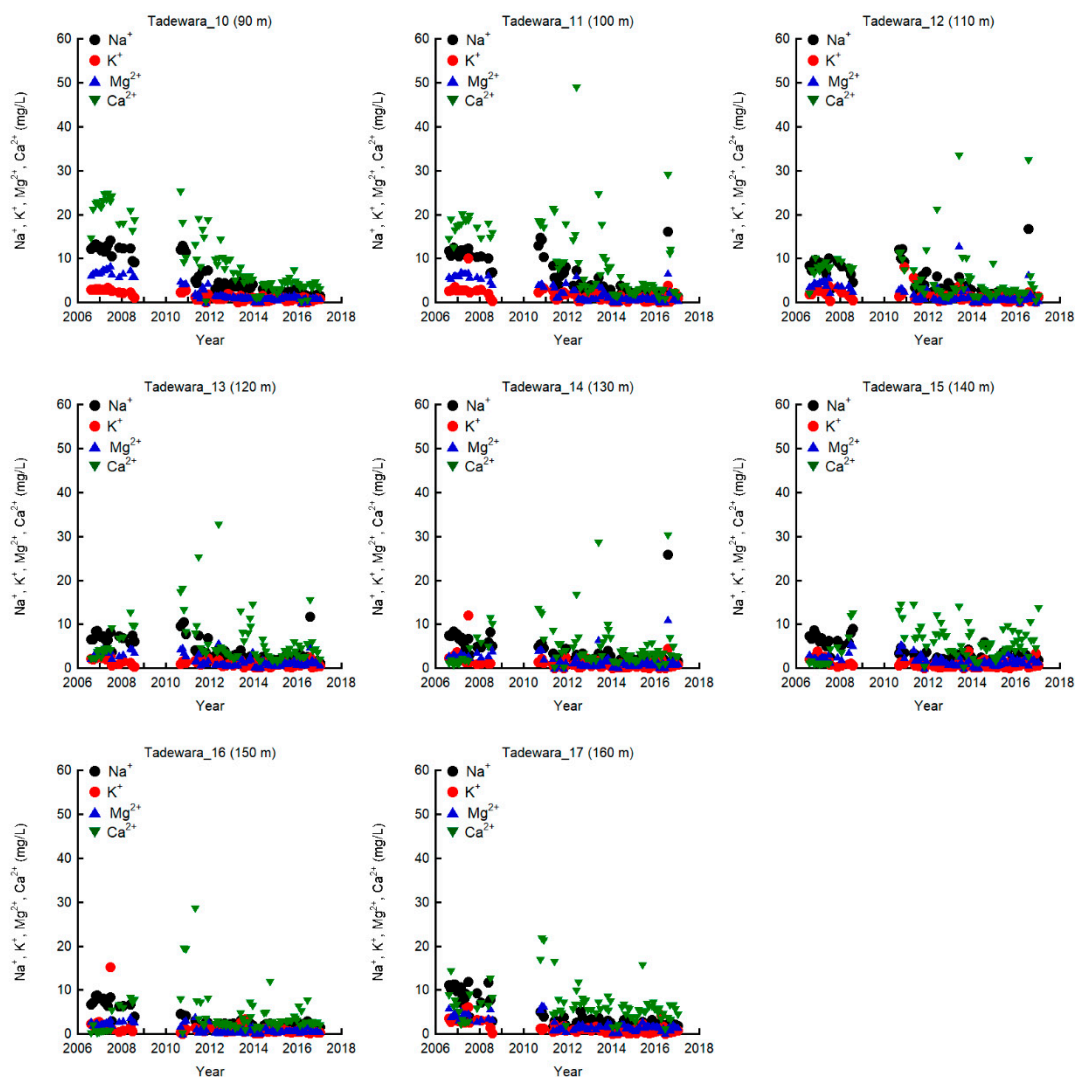


Figure S3(2) Na^+ , K^+ , Mg^{2+} , and Ca^{2+} concentrations of ground water at sites (No 10-17) on the Tadewara transect from August 10, 2006 to January 5, 2017. Data from August 2008 to May 2010 are missing.

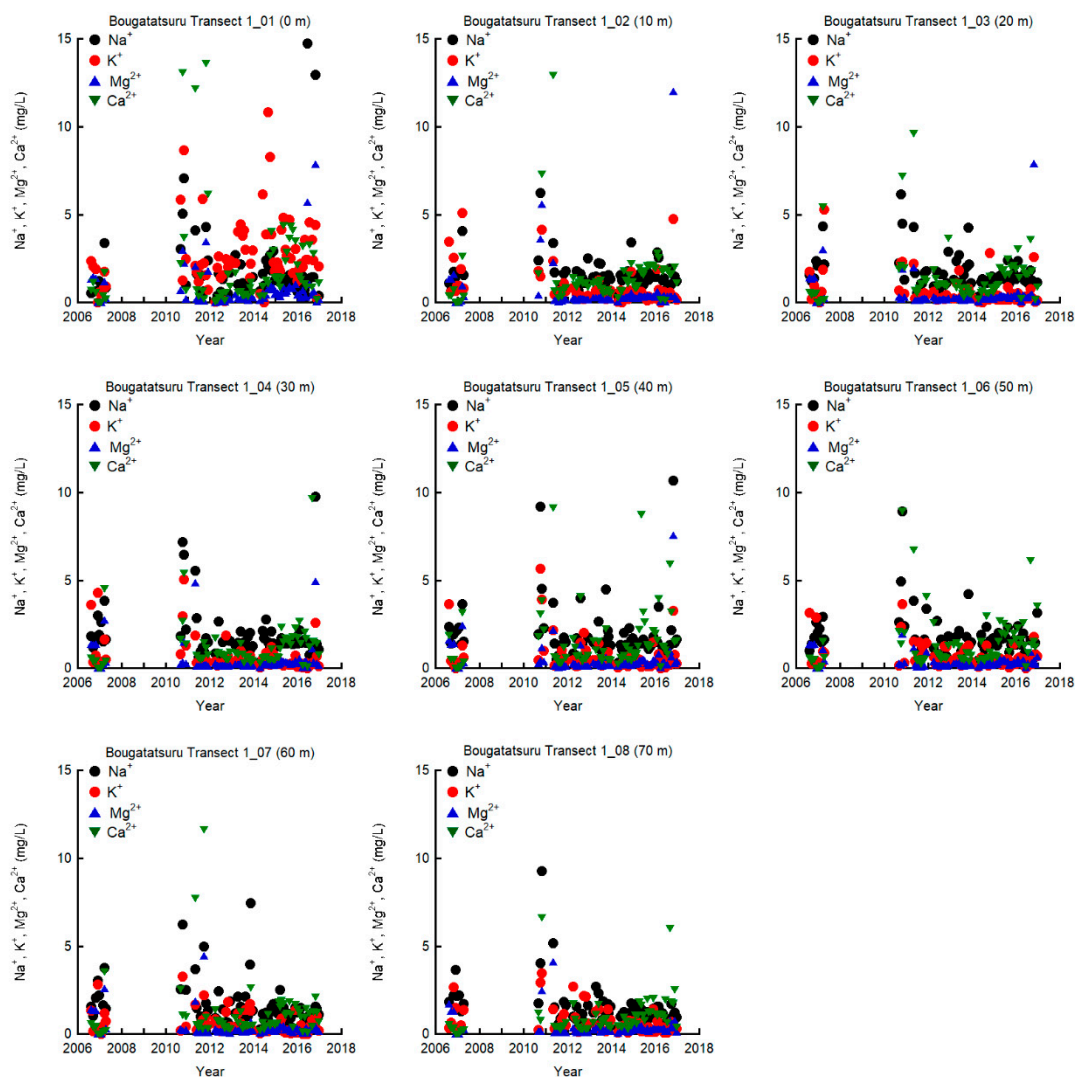


Figure S3(3) Na^+ , K^+ , Mg^{2+} , and Ca^{2+} concentrations of ground water at sites (No 1-9) on the Bougatatsuru transect No. 1 from August 9, 2006 to December 15, 2016. Data from August 2007 to July 2010 are missing.

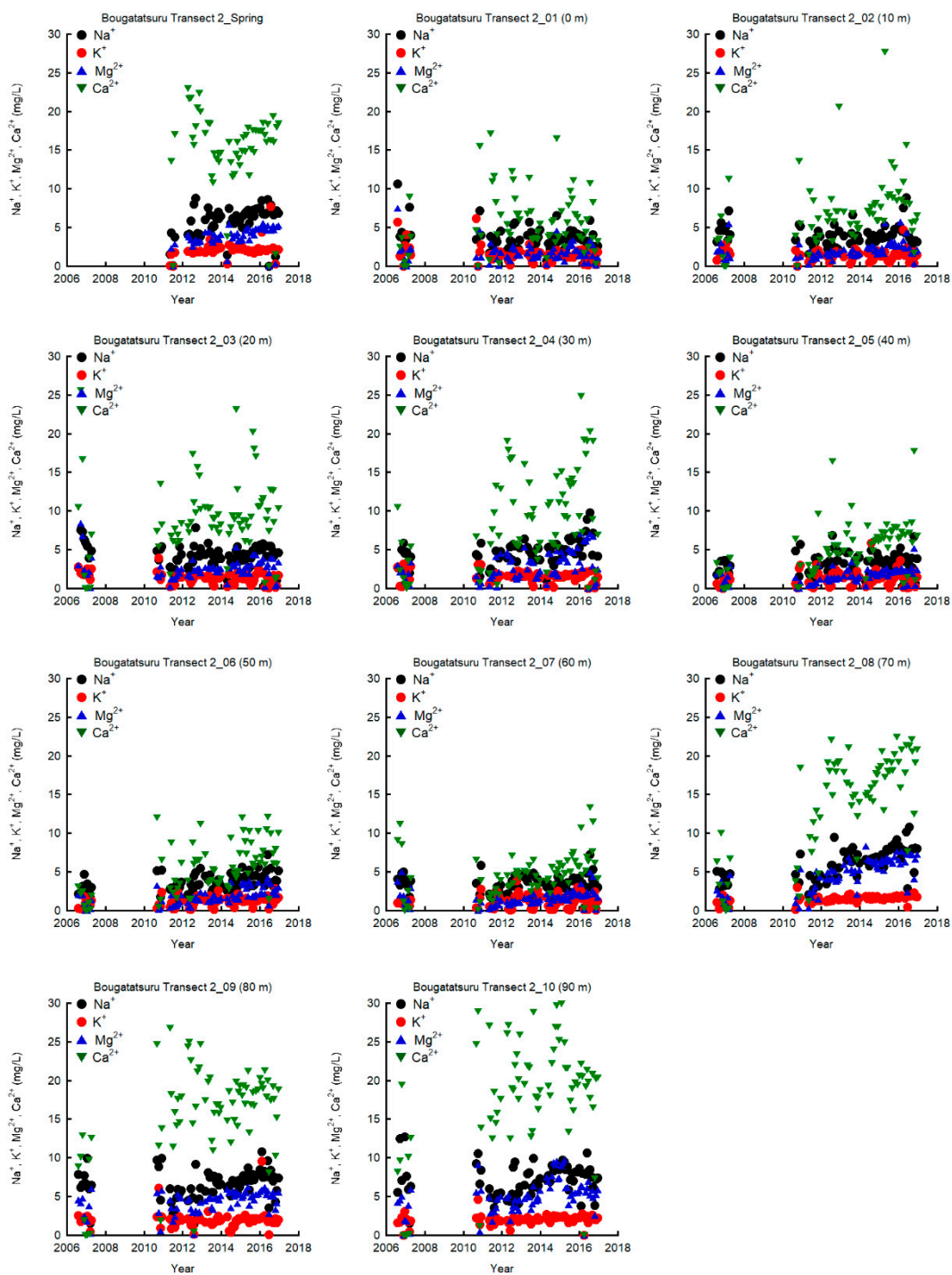


Figure S3(4) Na^+ , K^+ , Mg^{2+} , and Ca^{2+} concentrations of ground water at sites (spring and No 1-10) on the Bougatsuru transect No. 2 from August 9, 2006 to December 15, 2016. Data from August 2007 to July 2010 are missing.

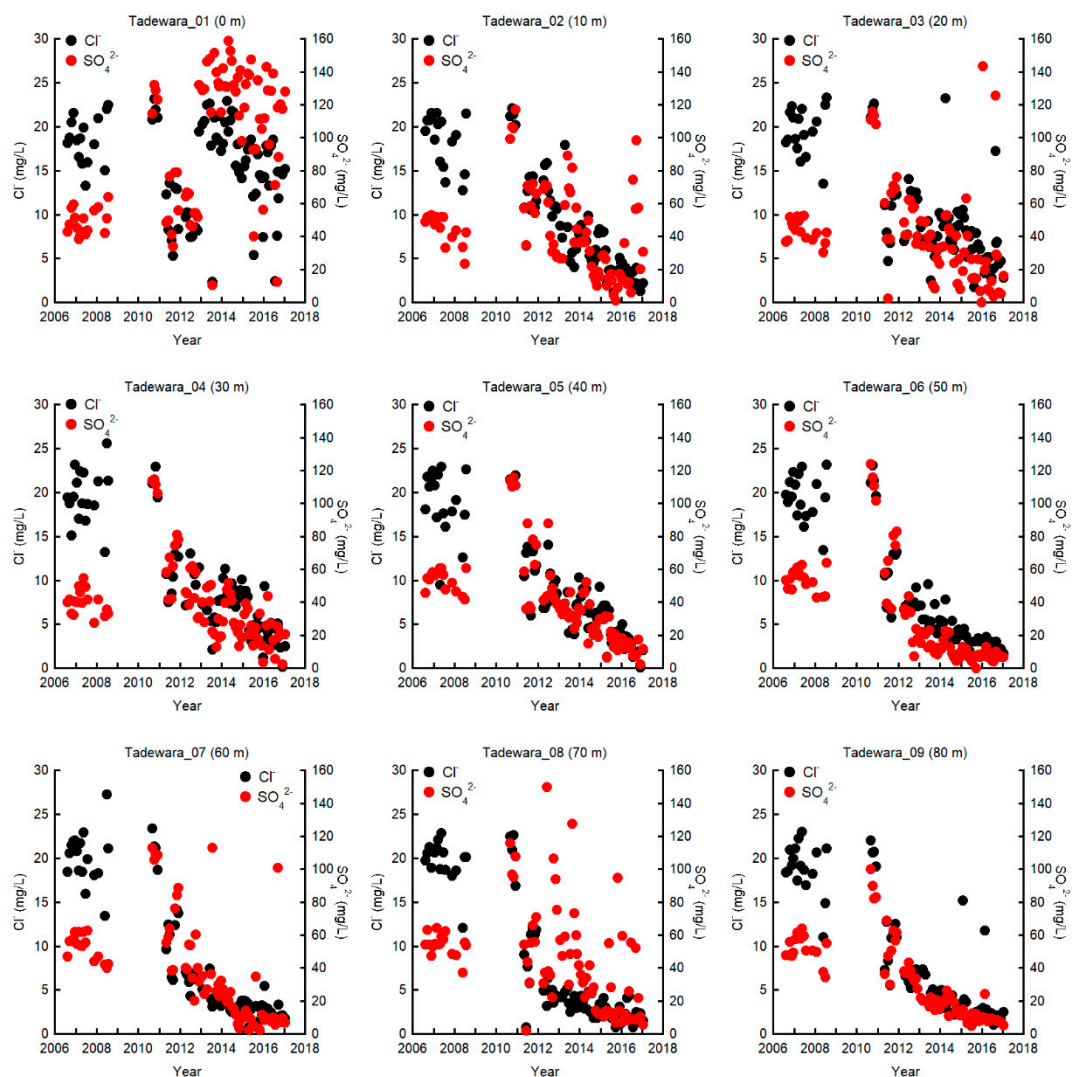


Figure S4(1) Cl^- and SO_4^{2-} concentrations of ground water at sites (No 1-9) on the Tadewara transect from August 10, 2006 to January 5, 2017. Data from August 2008 to May 2010 are missing.

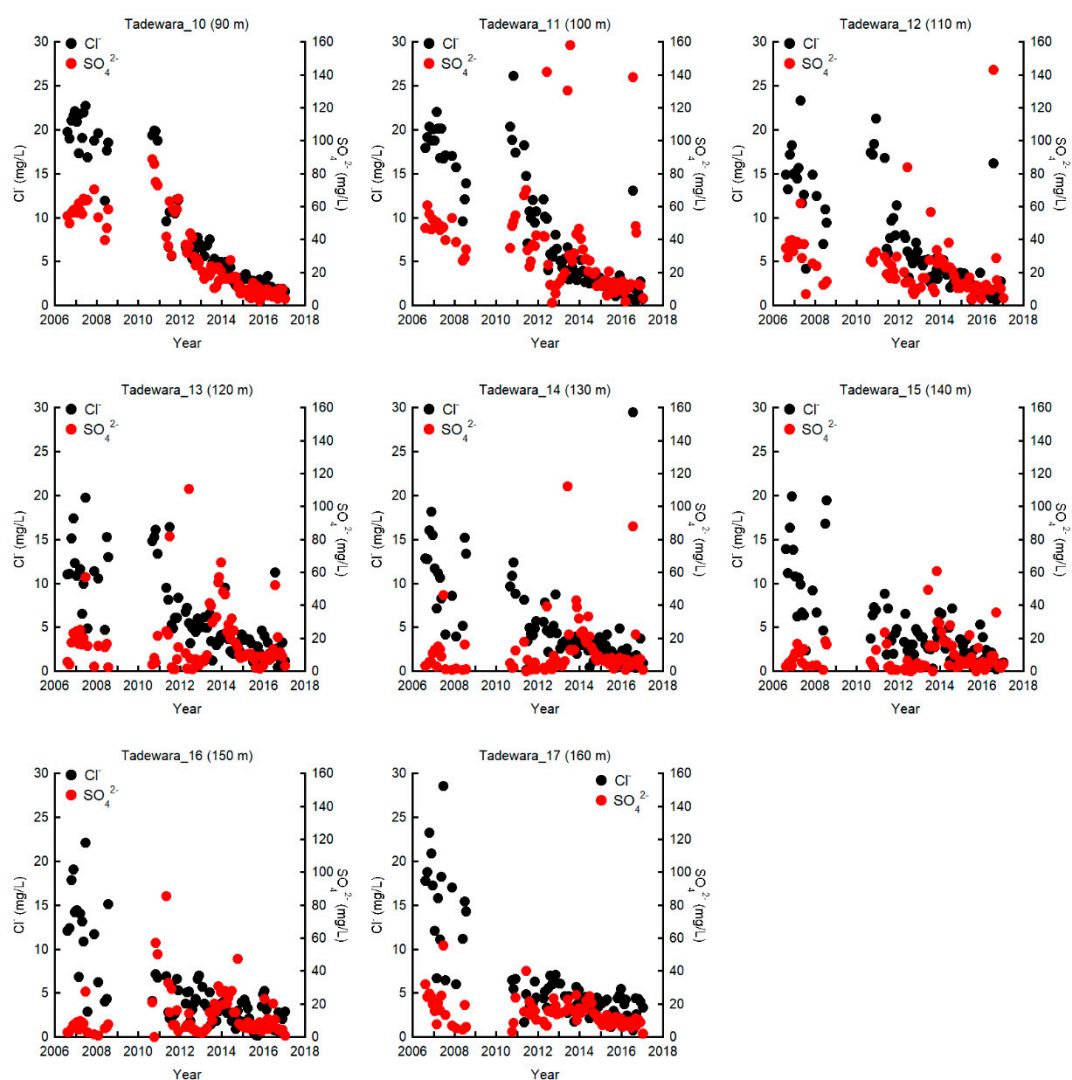


Figure S4(2) Cl^- and SO_4^{2-} concentrations of ground water at sites (No 10-17) on the Tadewara transect from August 10, 2006 to January 5, 2017. Data from August 2008 to May 2010 are missing.

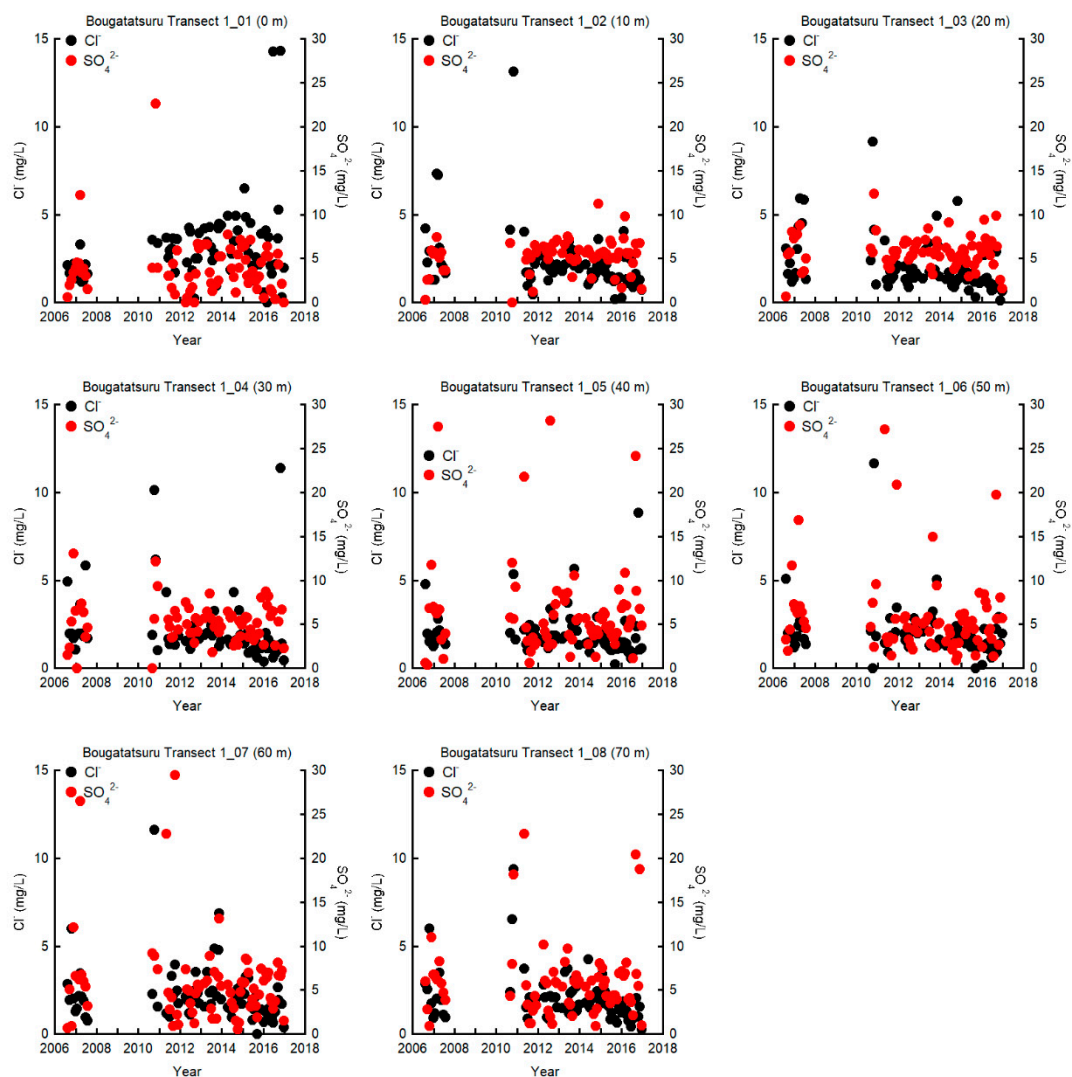


Figure S4(3) Cl^- and SO_4^{2-} concentrations of ground water at sites (No 1-9) on the Bougatatsuru transect No. 1 from August 9, 2006 to December 15, 2016. Data from August 2007 to July 2010 are missing.

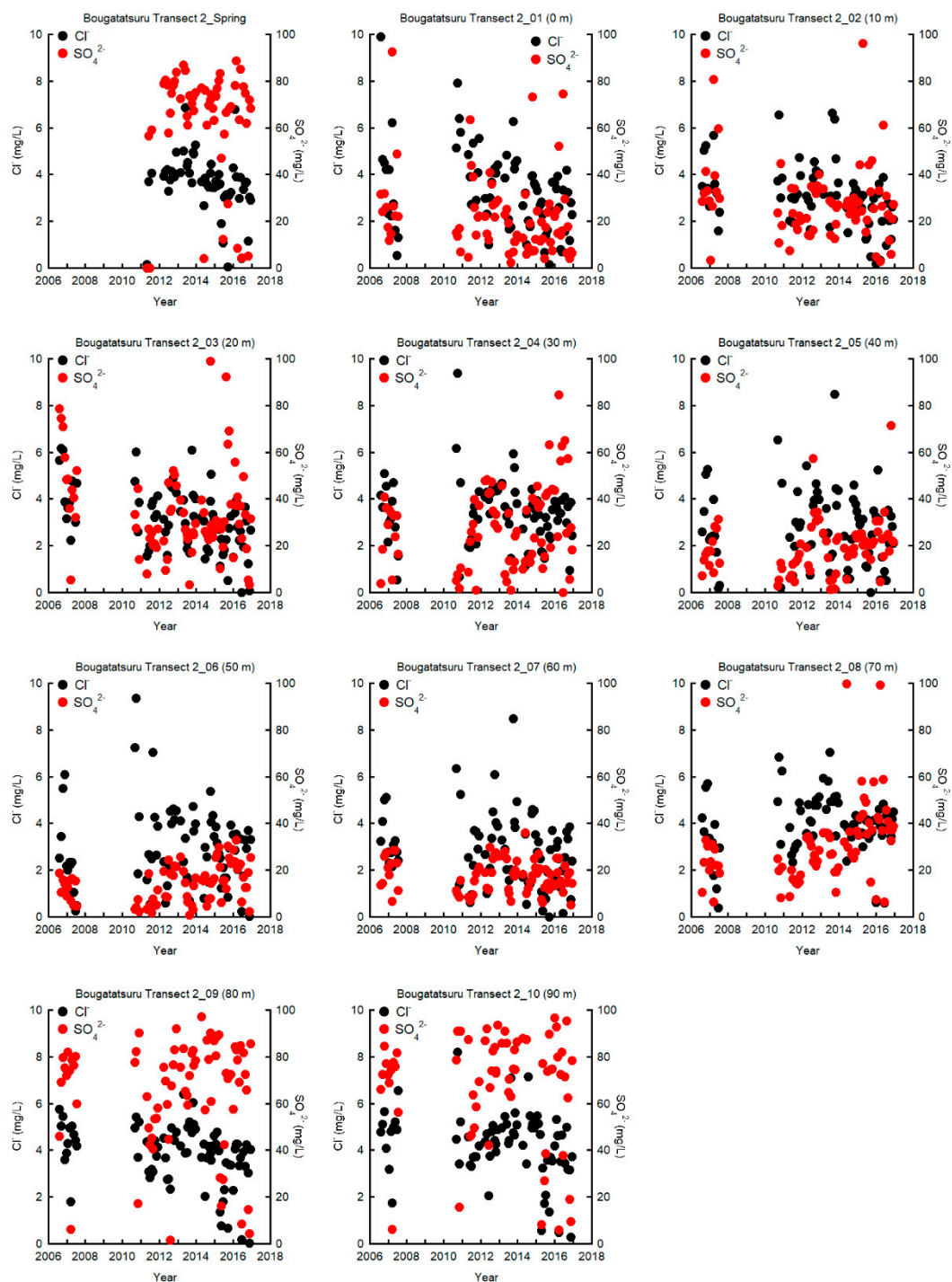


Figure S4(4) Cl^- and SO_4^{2-} concentrations of ground water at sites (spring and No 1-10) on the Bougatsuru transect No. 2 from August 9, 2006 to December 15, 2016. Data from August 2007 to July 2010 are missing.

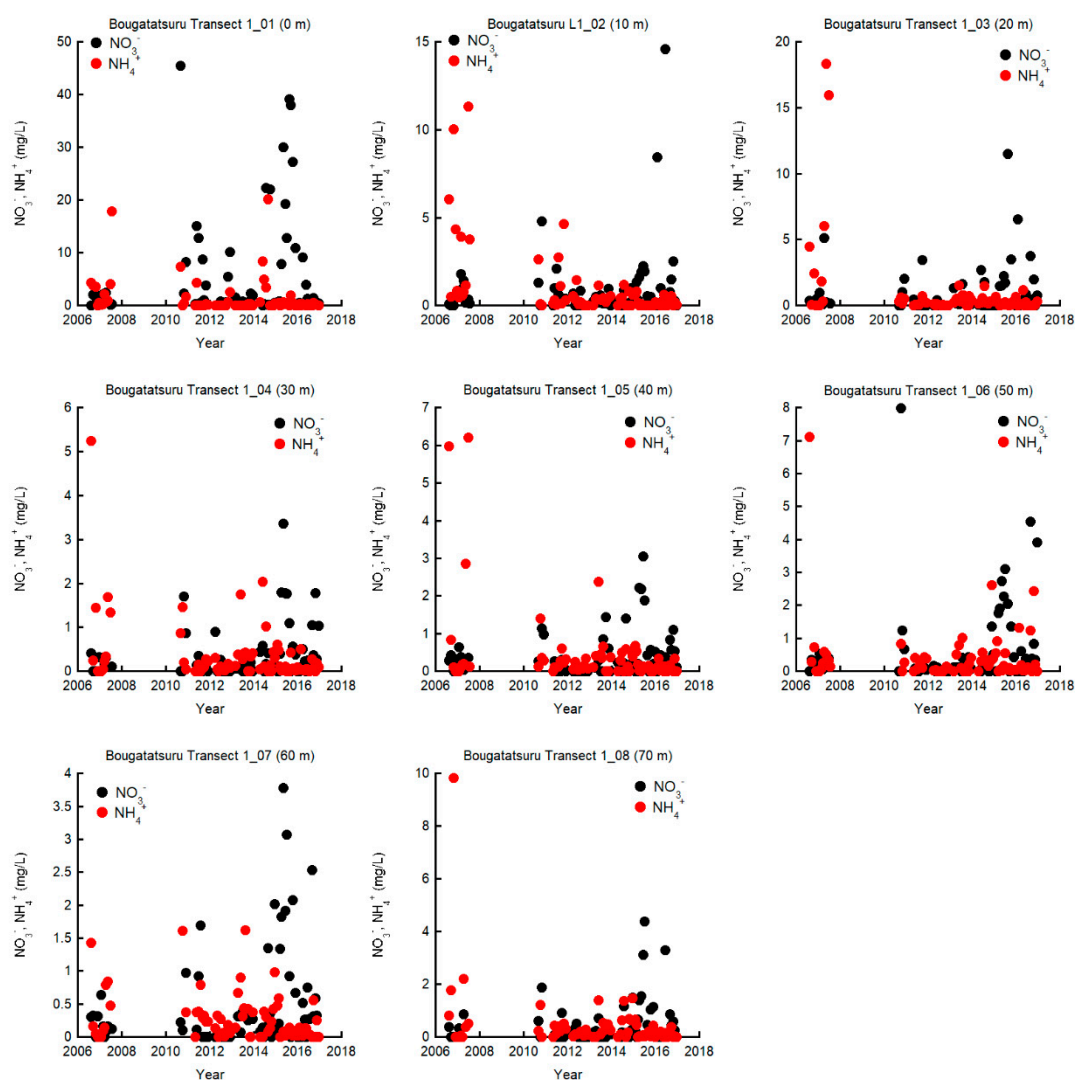


Figure S5(1) NO_3^- , and NH_4^+ concentrations of ground water at sites (No 1-9) on the Tadewara transect from August 10, 2006 to January 5, 2017. Data from August 2008 to May 2010 are missing.

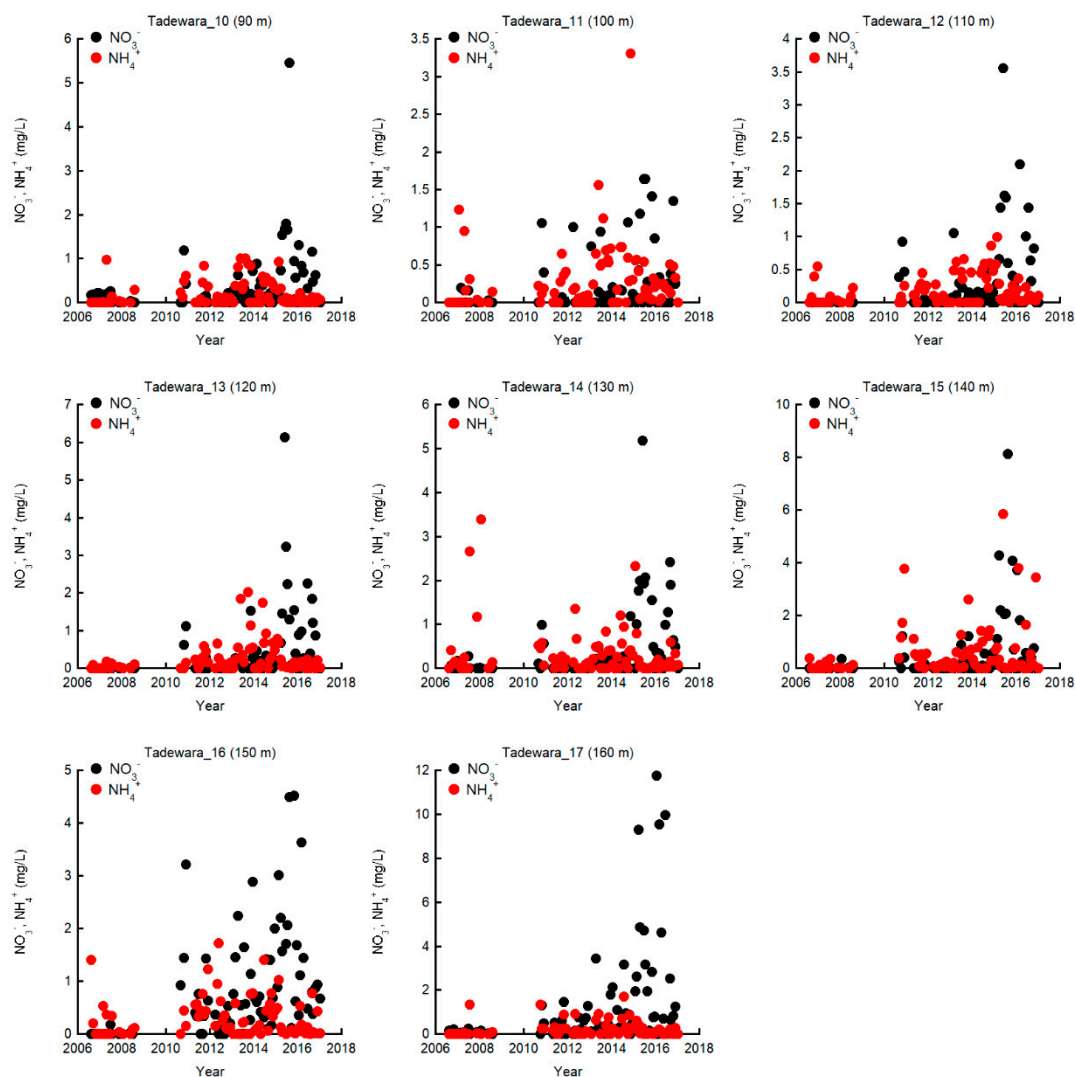


Figure S5(2) NO_3^- , and NH_4^+ concentrations of ground water at sites (No 10-17) on the Tadewara transect from August 10, 2006 to January 5, 2017. Data from August 2008 to May 2010 are missing.

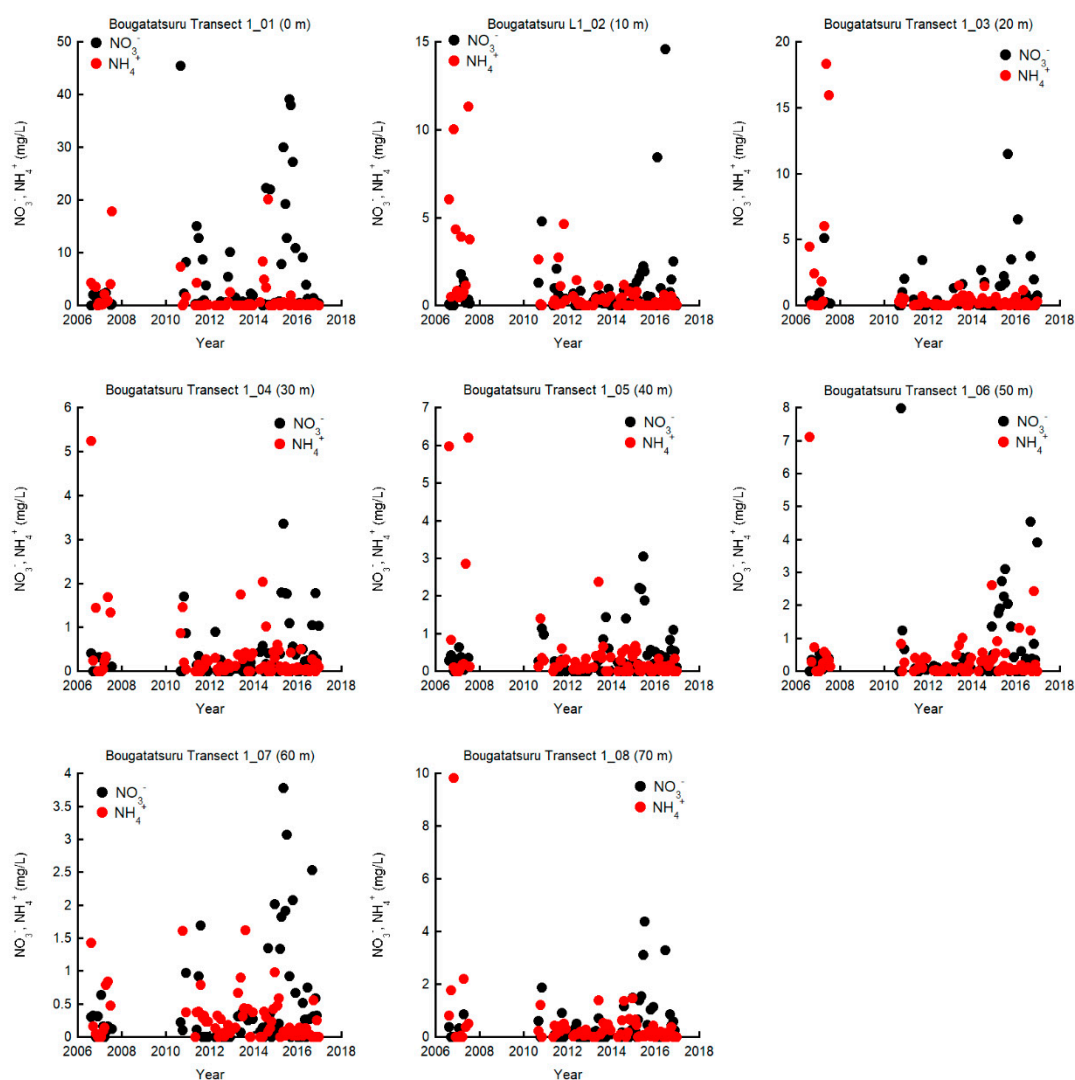


Figure S5(3) NO_3^- and NH_4^+ concentrations of ground water at sites (No 1-9) on the Bougatatsuru transect No. 1 from August 9, 2006 to December 15, 2016. Data from August 2007 to July 2010 are missing.

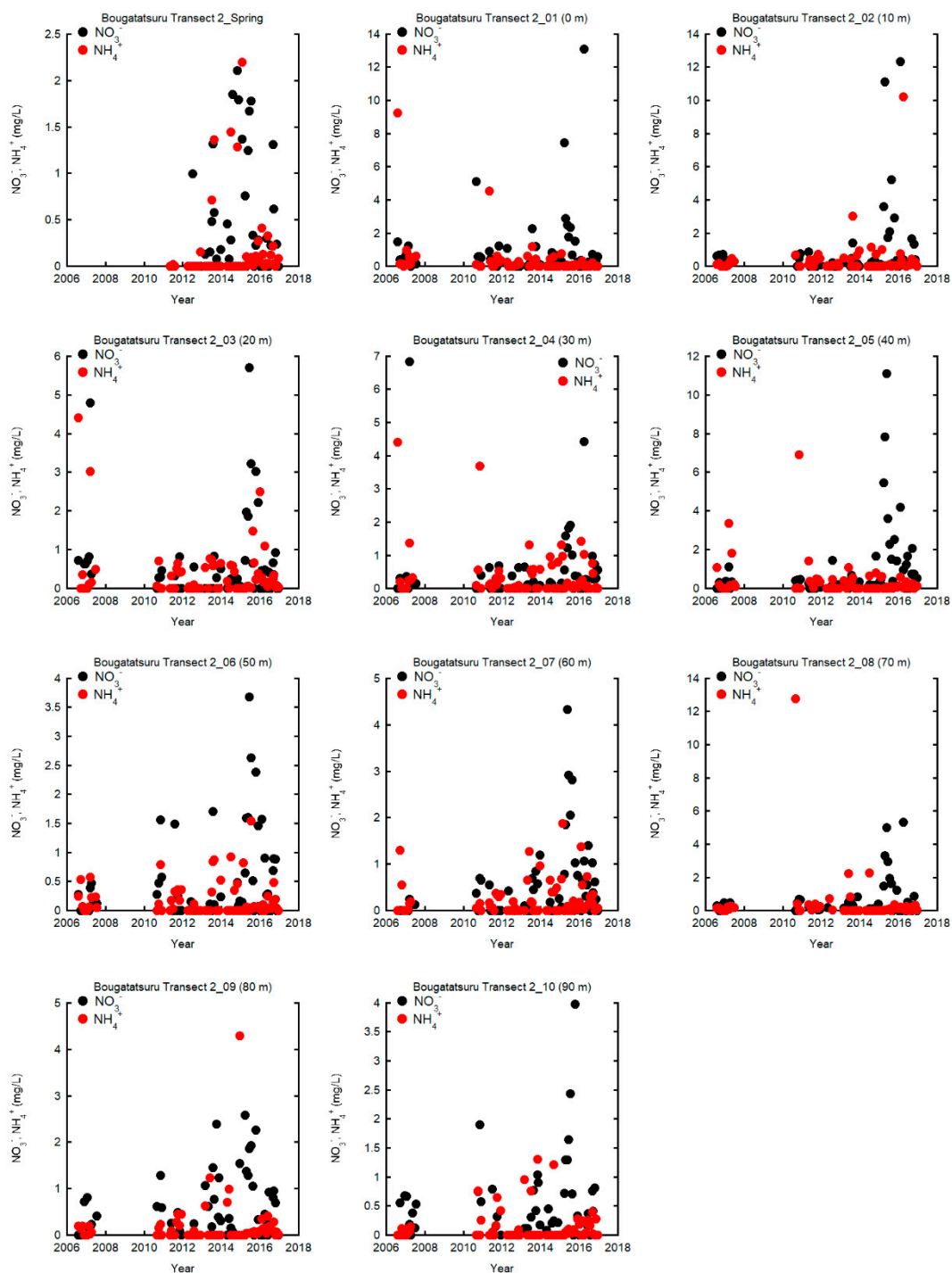


Figure S5(4) NO_3^- and NH_4^+ concentrations of ground water at sites (spring and No 1-10) on the Bougatsuru transect No. 2 from August 9, 2006 to December 15, 2016. Data from August 2007 to July 2010 are missing.

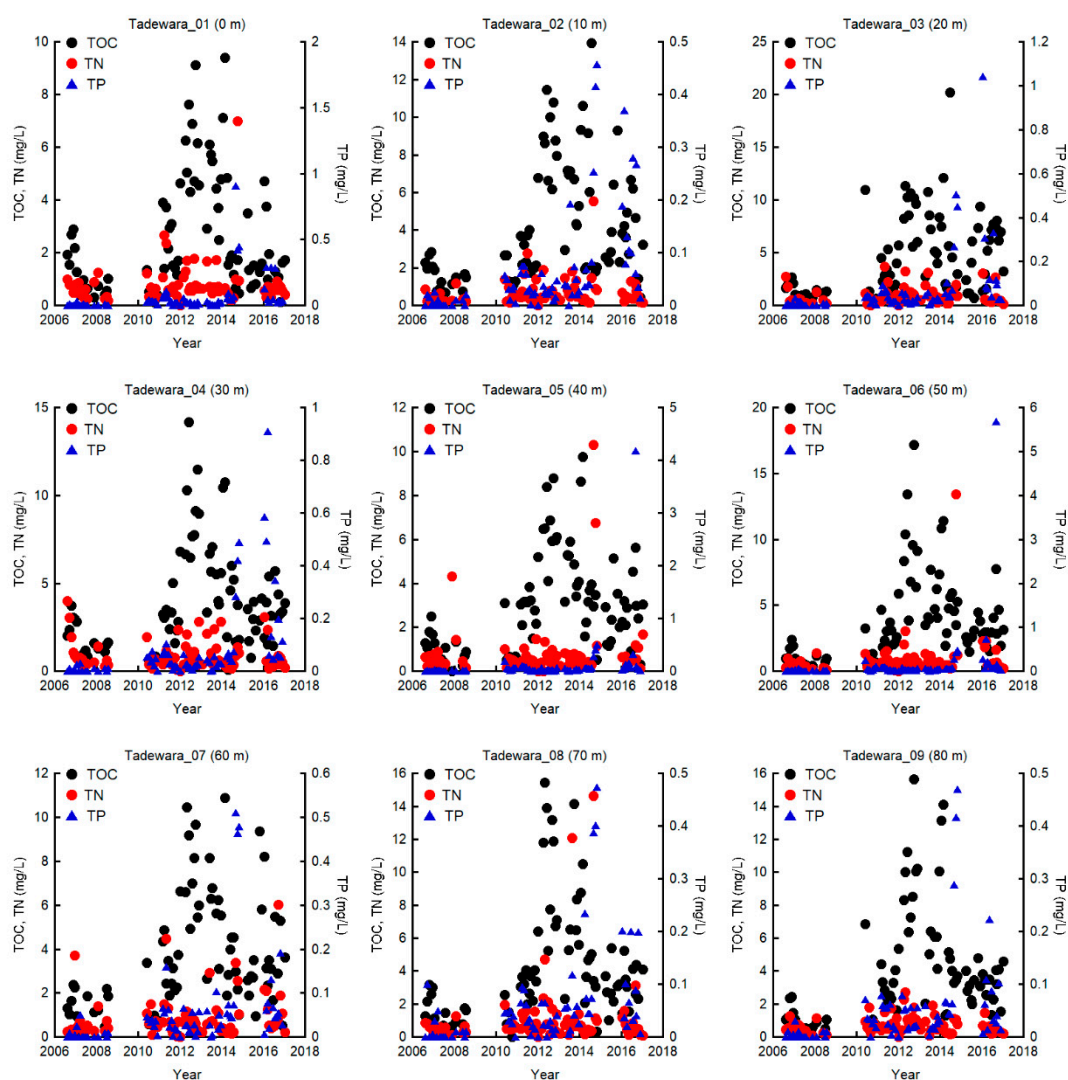


Figure S6(1) TOC (total organic carbon), TN (total nitrogen), and TP (total phosphorus) concentrations of ground water at sites (No 1-9) on the Tadewara transect from August 10, 2006 to January 5, 2017. Data from August 2008 to May 2010 are missing.

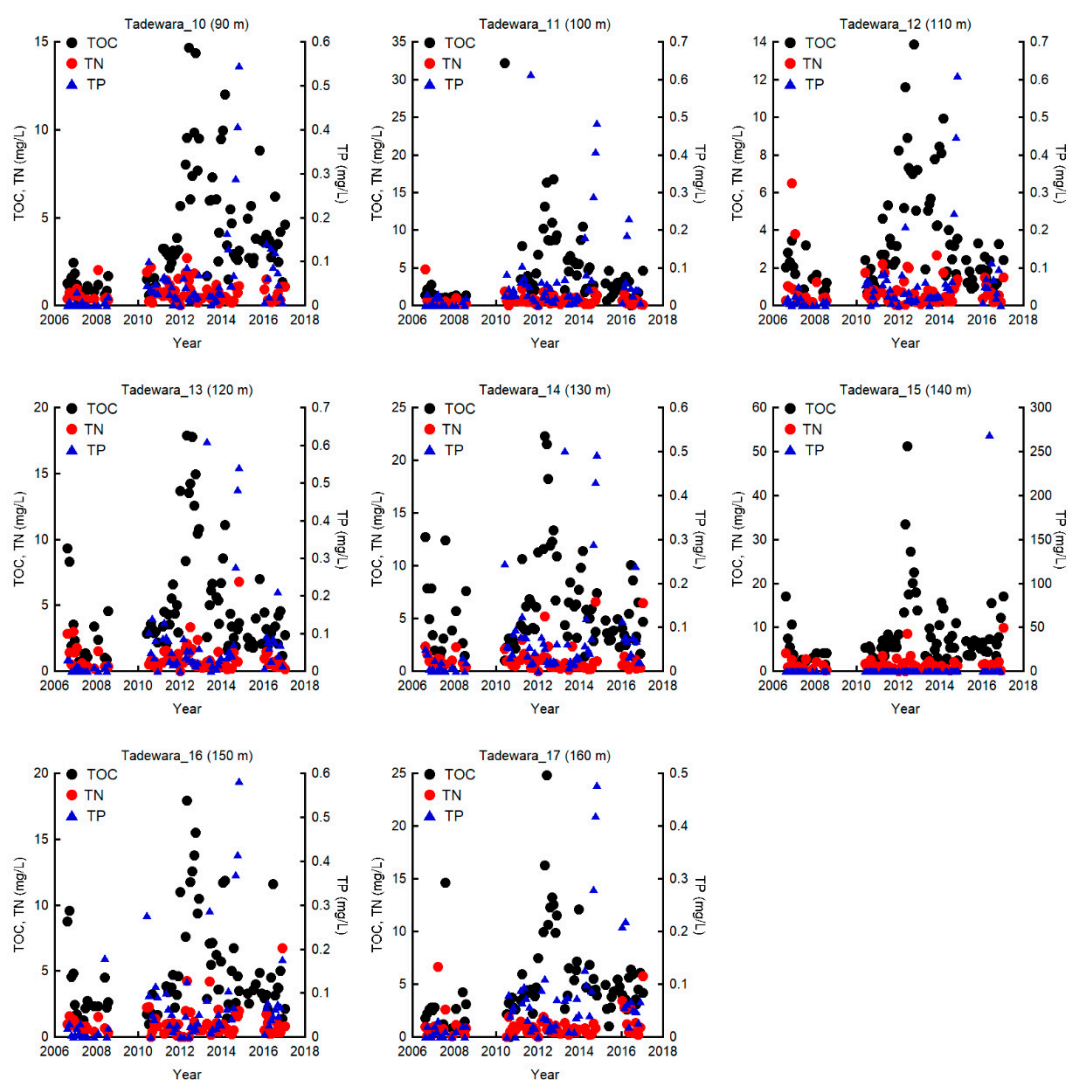


Figure S6(2) TOC (total organic carbon), TN (total nitrogen), and TP (total phosphorus) concentrations of ground water at sites (No 10-17) on the Tadewara transect from August 10, 2006 to January 5, 2017. Data from August 2008 to May 2010 are missing.

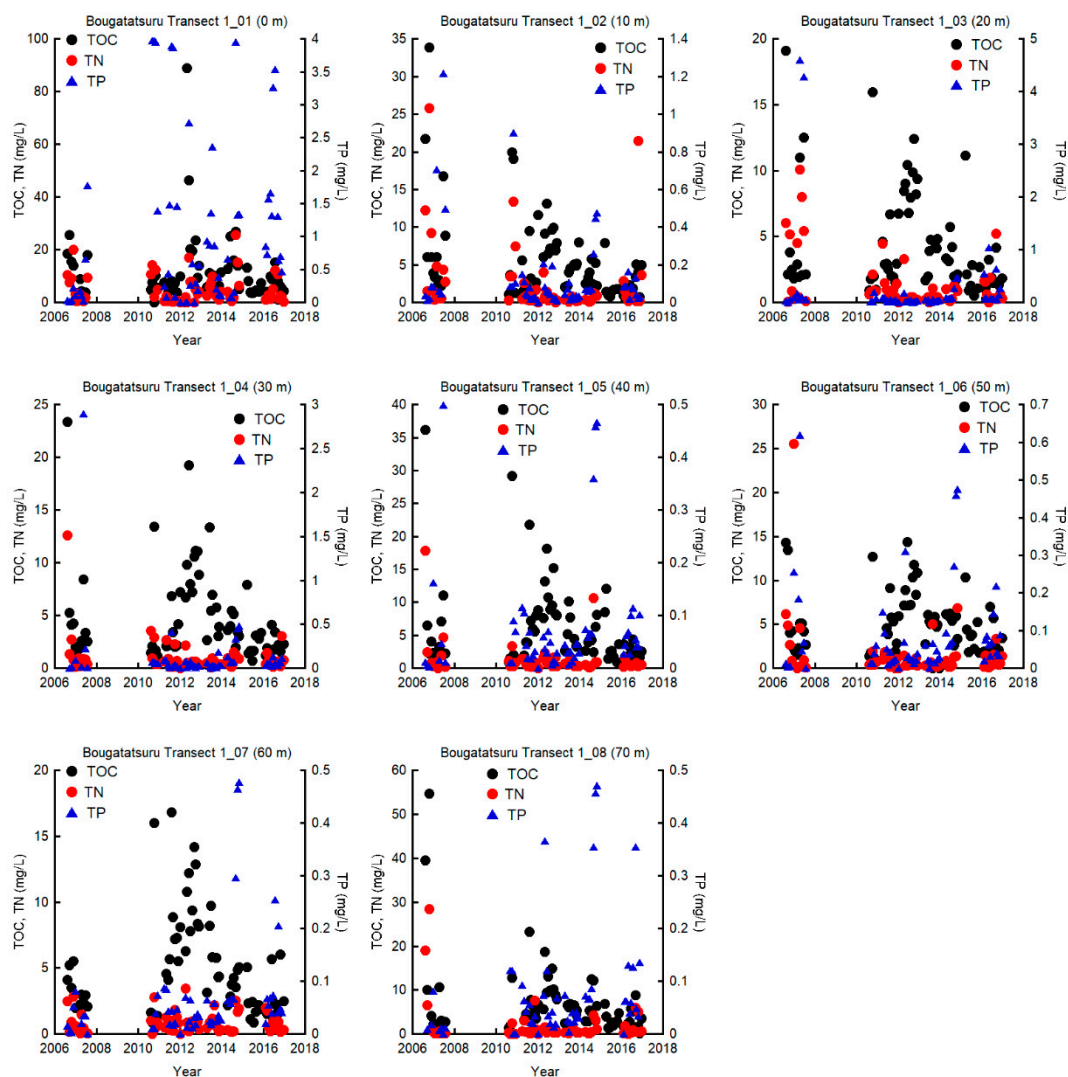


Figure S6(3) TOC (total organic carbon), TN (total nitrogen), and TP (total phosphorus) concentrations of ground water at sites (No 1-9) on the Bougatsuru transect No. 1 from August 9, 2006 to December 15, 2016. Data from August 2007 to July 2010 are missing.

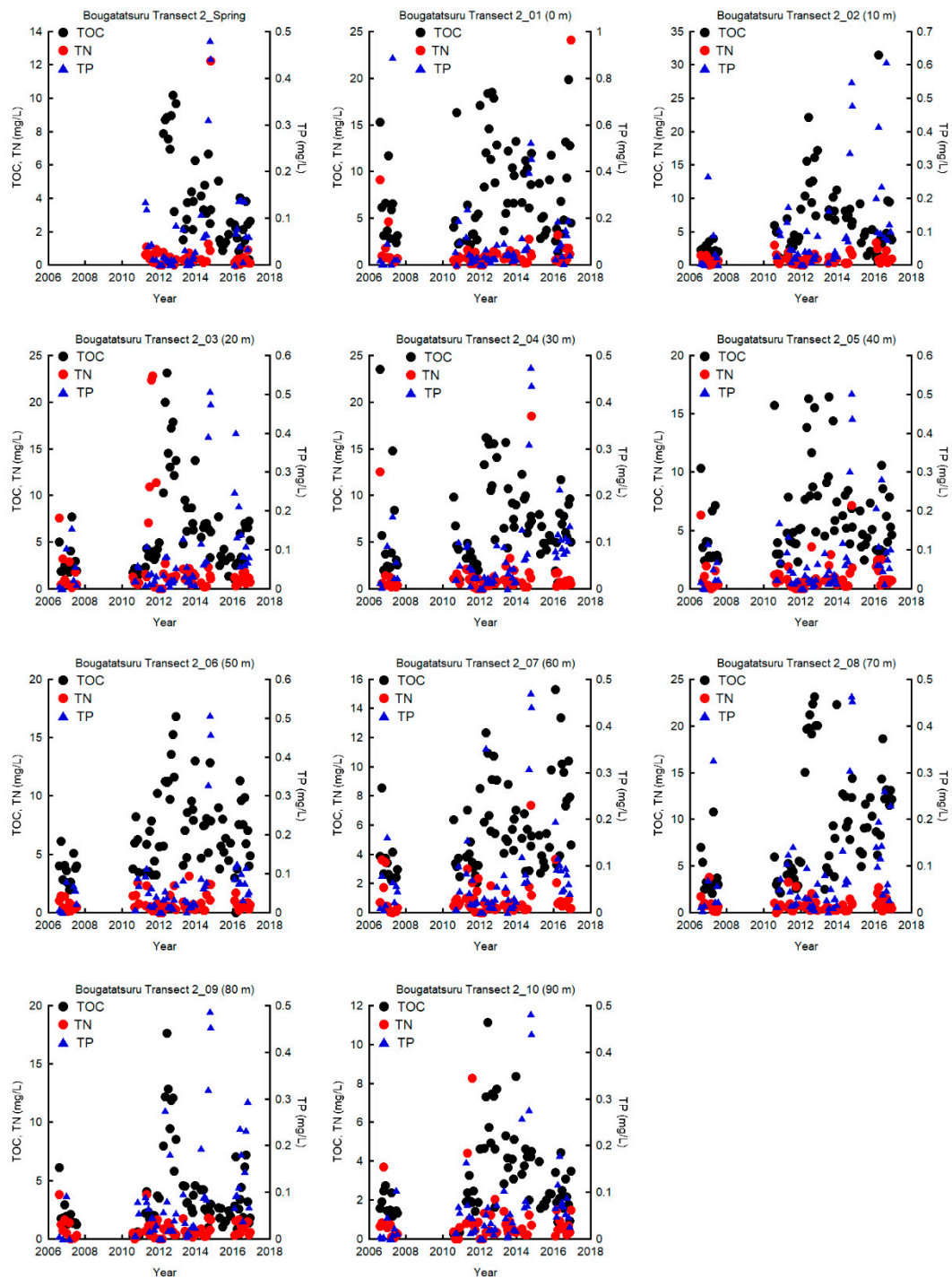


Figure S6(4) TOC (total organic carbon), TN (total nitrogen), and TP (total phosphorus) concentrations of ground water at sites (spring and No 1-10) on the Bougatsuru transect No. 2 from August 9, 2006 to December 15, 2016. Data from August 2007 to July 2010 are missing.

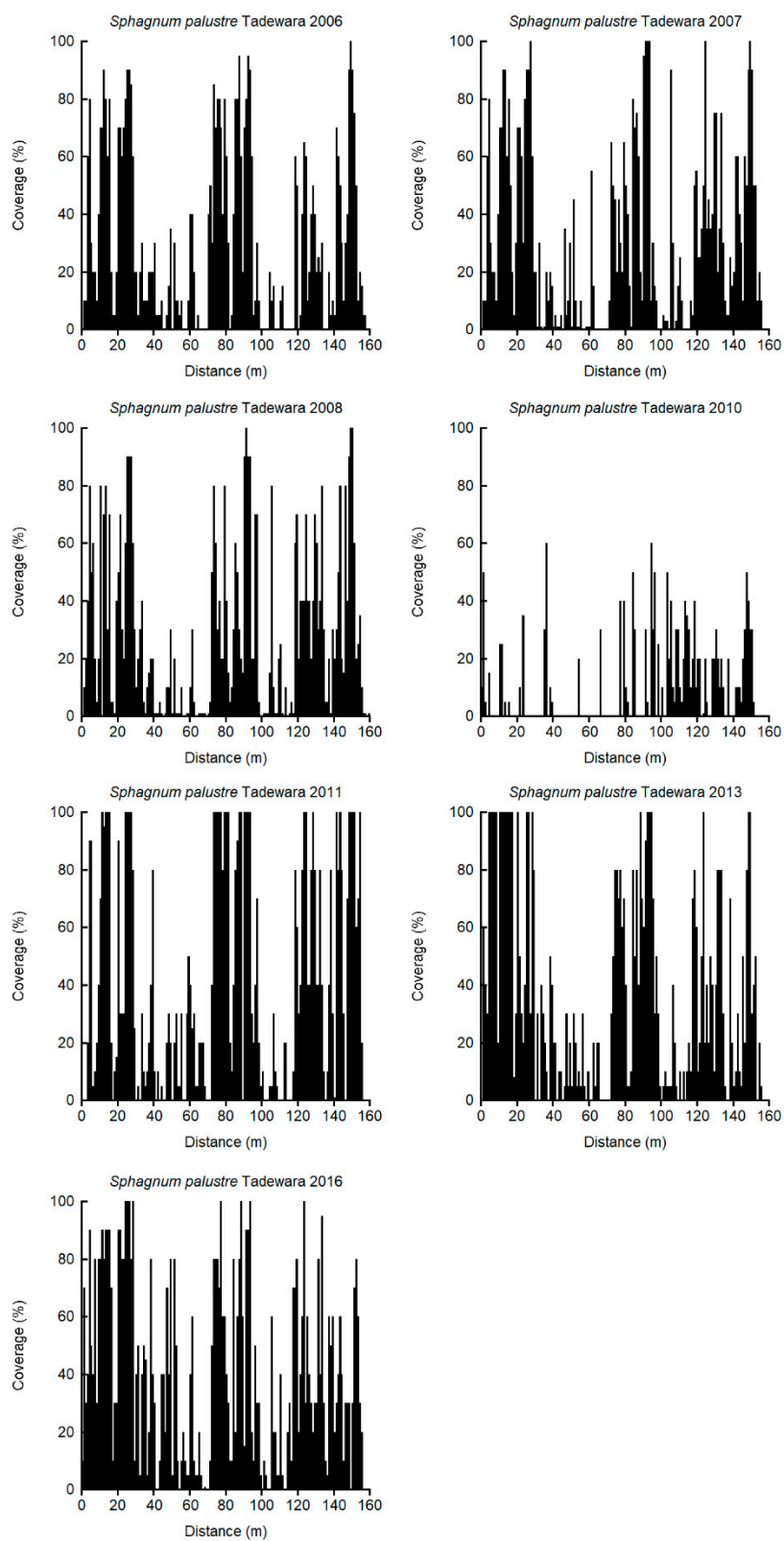


Figure S7(1) Coverage of *Sphagnum palustre* on the Tndewara transect.

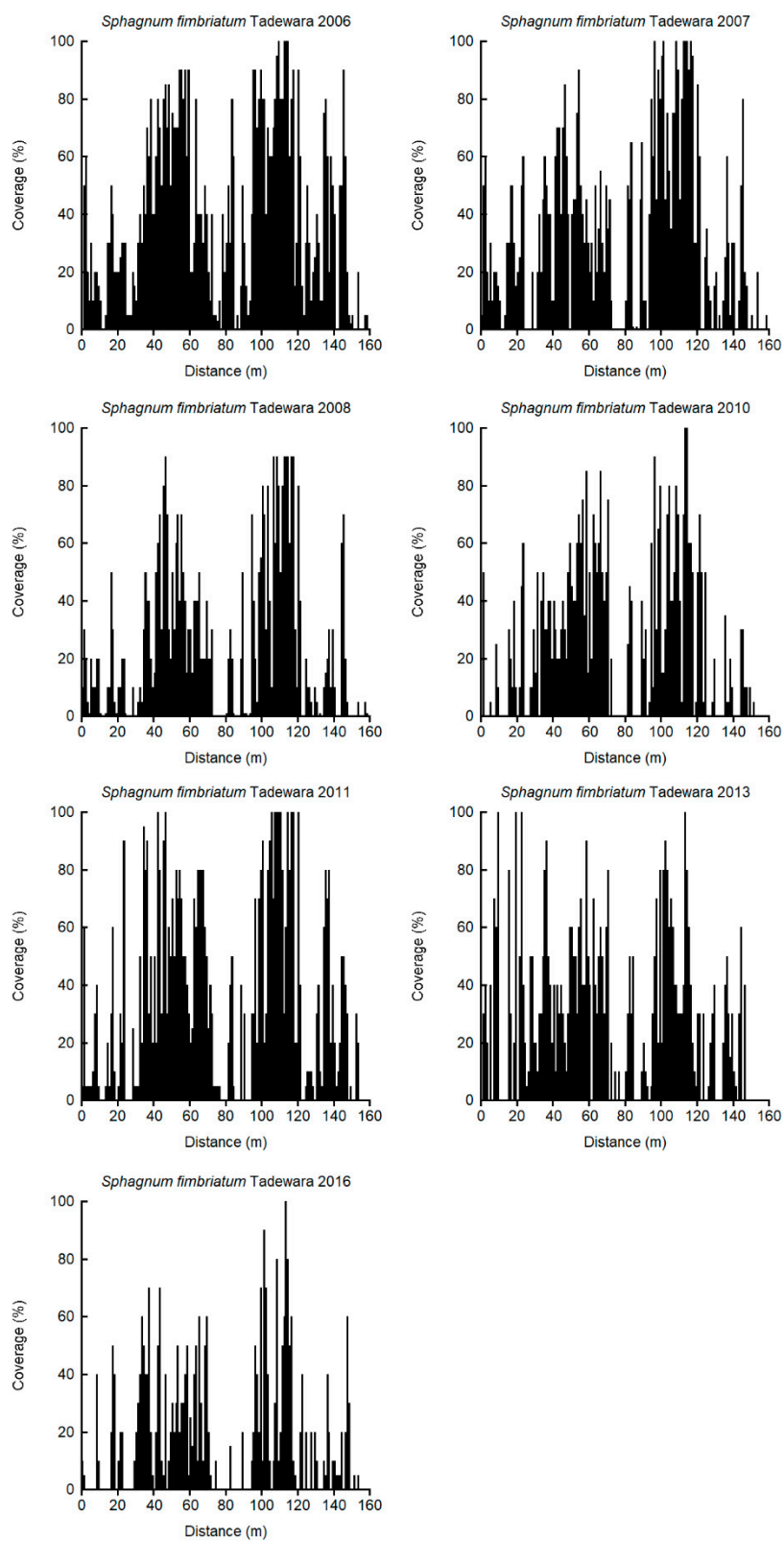


Figure S7(2) Coverage of *Sphagnum fimbriatum* on the Tndewara transect.

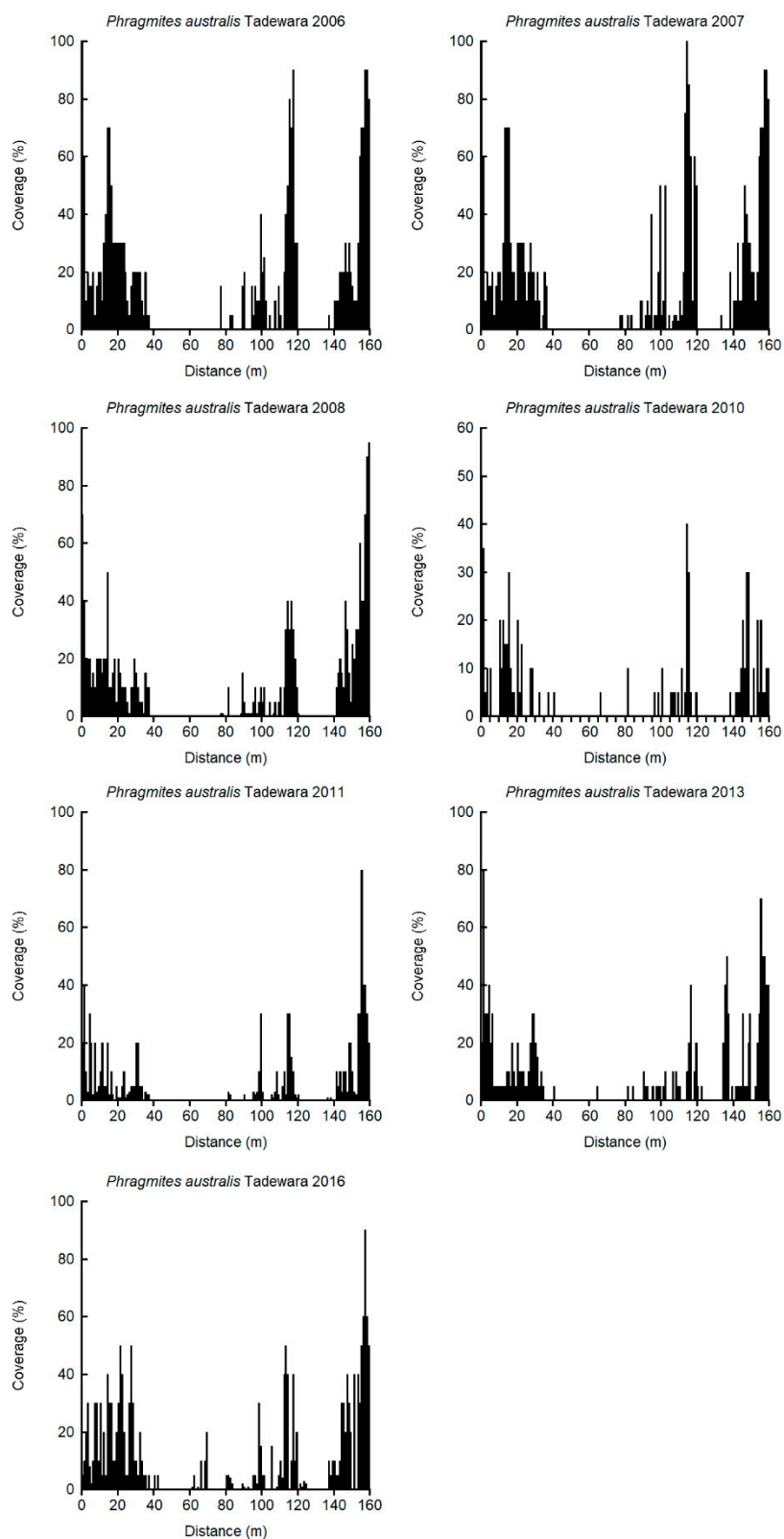


Figure S7(3) Coverage of *Phragmites australis* on the Tndewara transect.

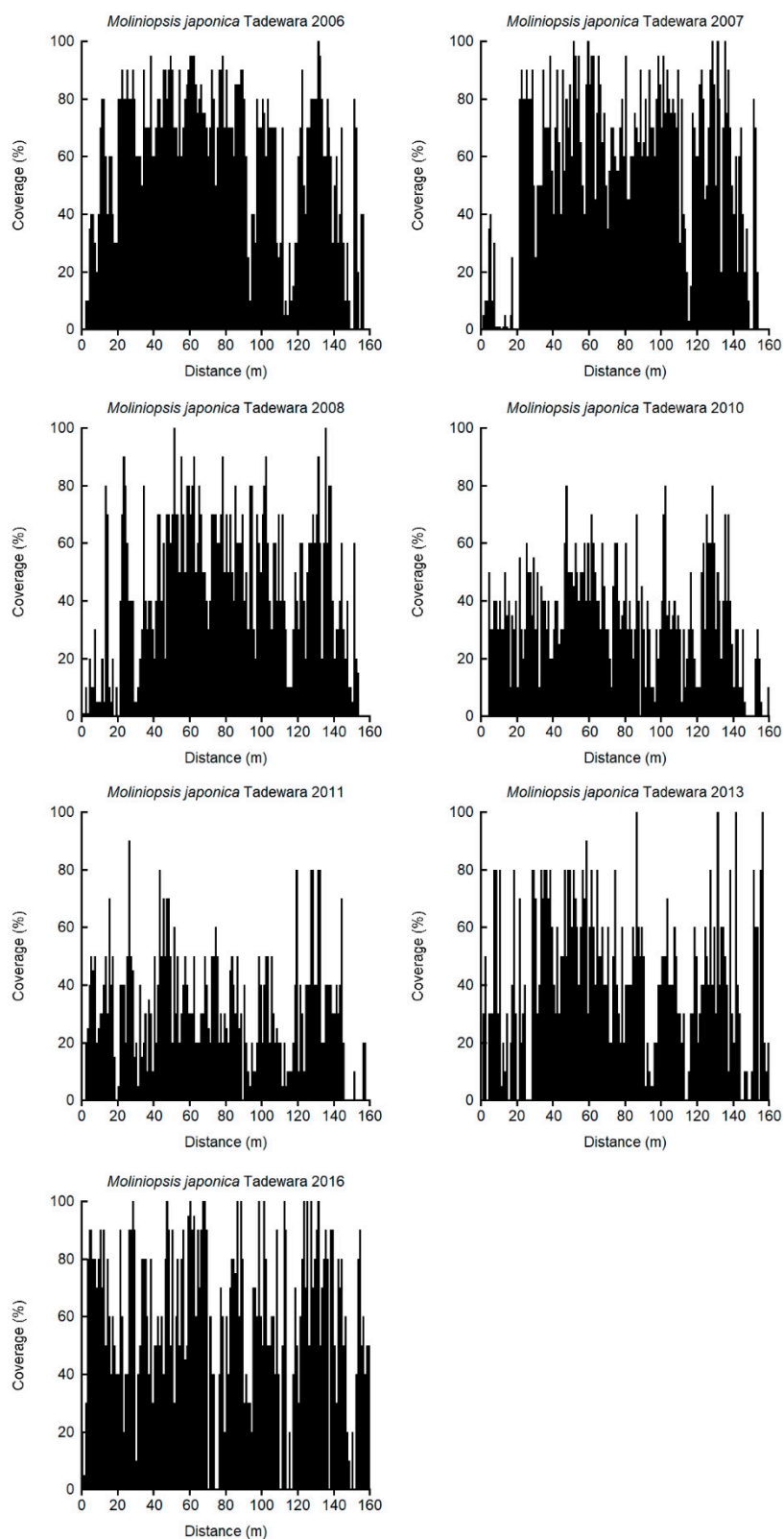


Figure S7(4) Coverage of *Moliniopsis japonica* on the Tndewara transect.

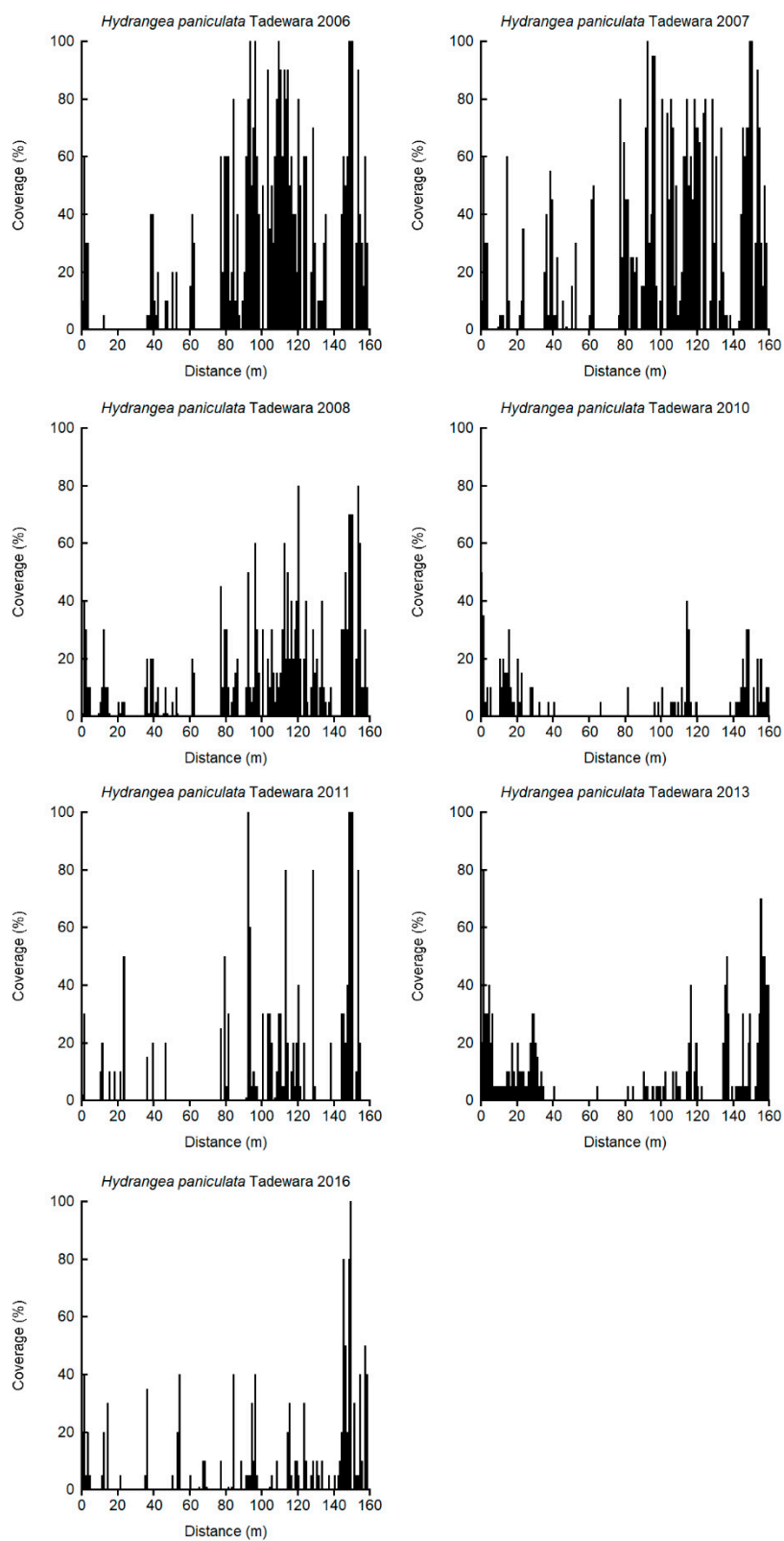


Figure S7(5) Coverage of *Hydrangea paniculata* on the Tndewara transect.

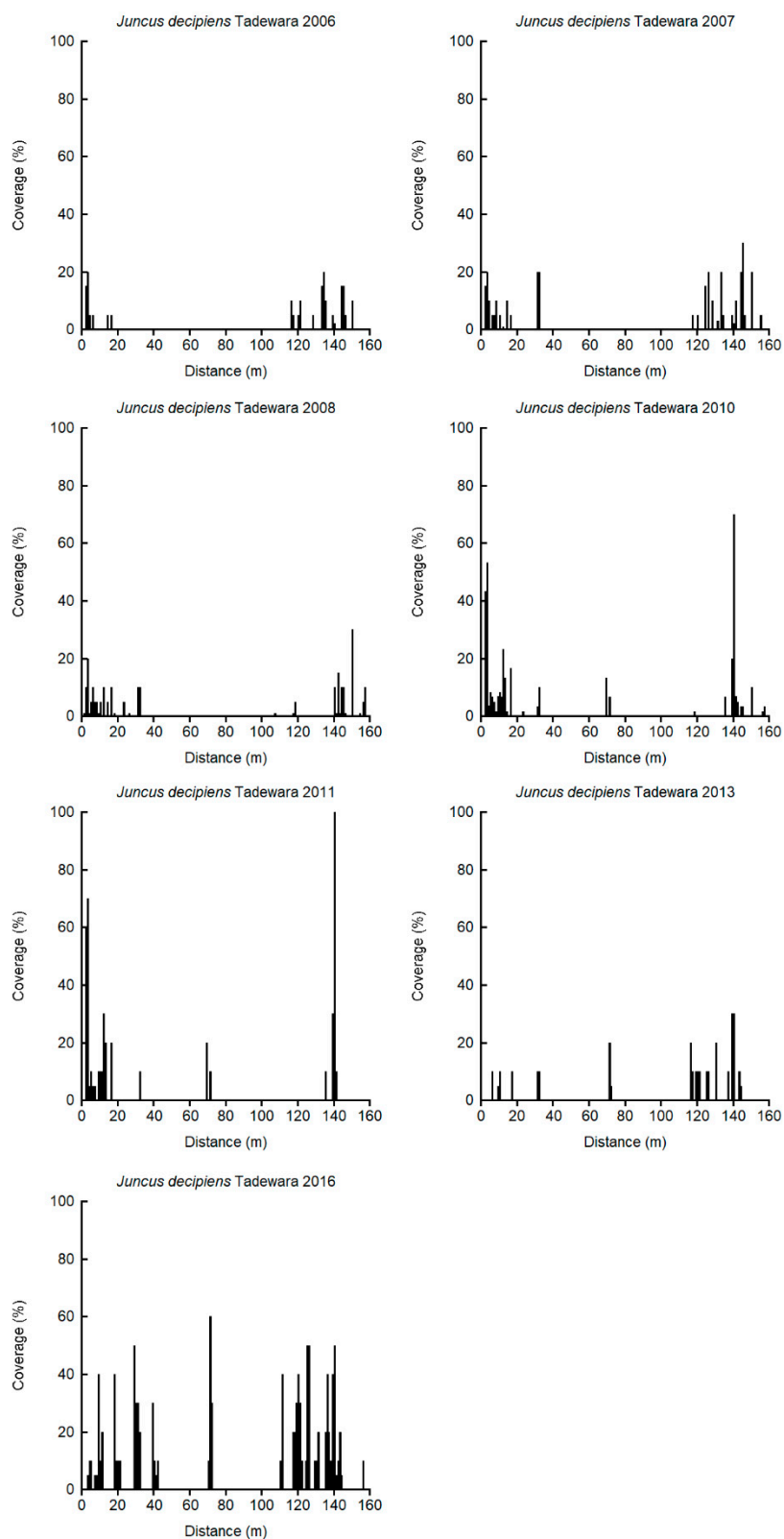


Figure S7(6) Coverage of *Juncus decipiens* on the Tndewara transect.

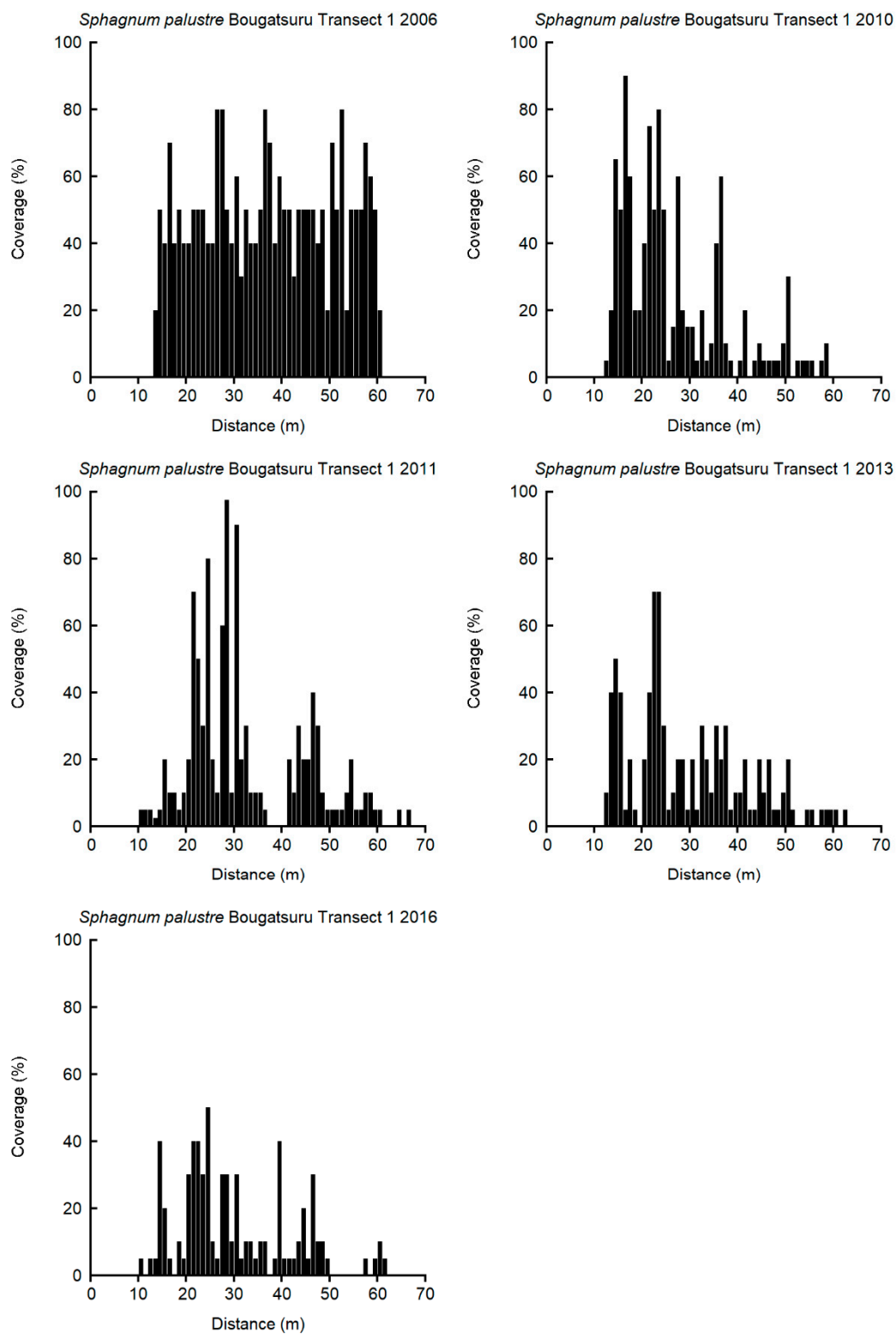


Figure S8(1) Coverage of *Sphagnum palustre* on the Bougatsuru transect No. 1.

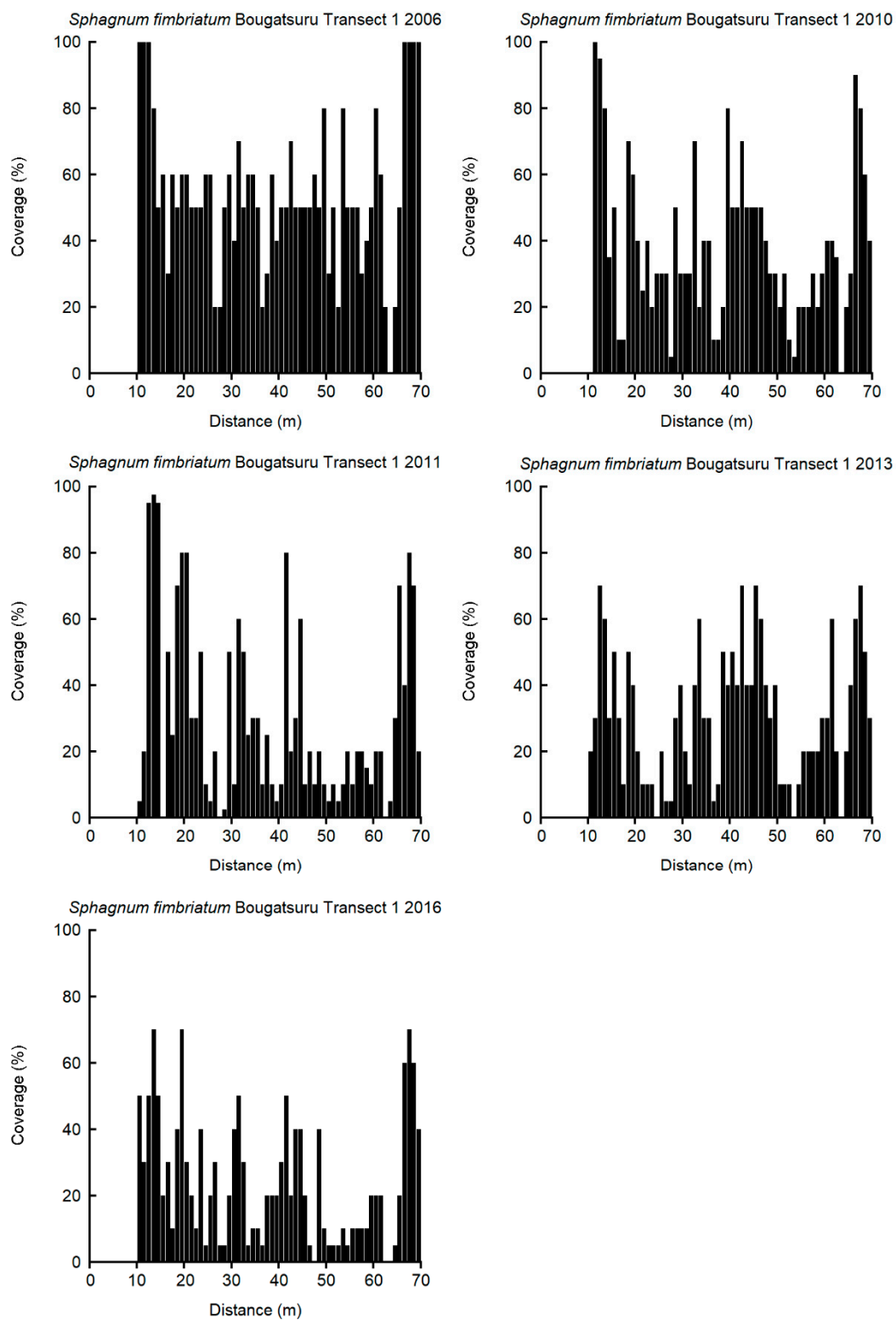


Figure S8(2) Coverage of *Sphagnum fimbriatum* on the Bougatsuru transect No. 1.

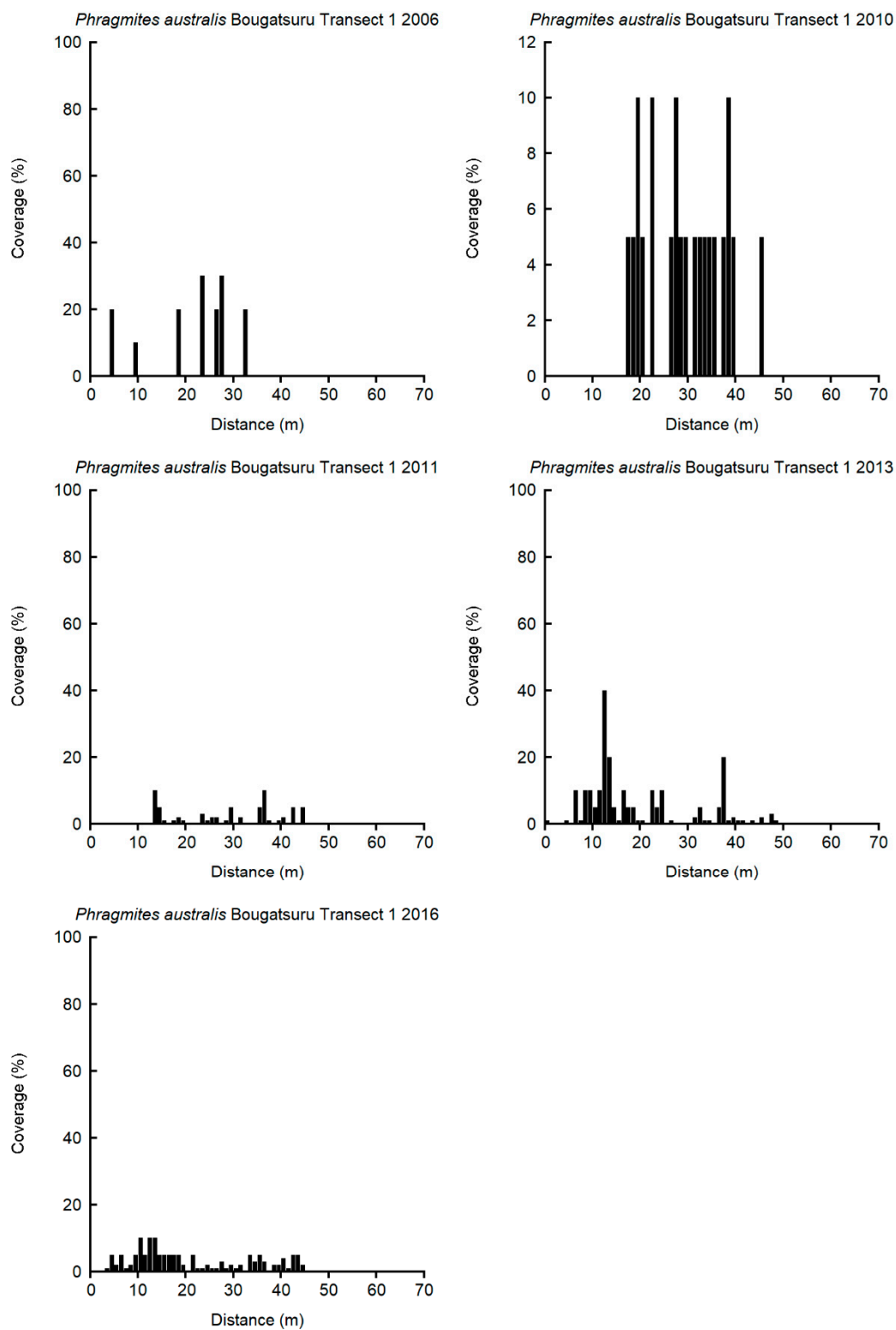


Figure S8(3) Coverage of *Phragmites australis* on the Bougatsuru transect No. 1.

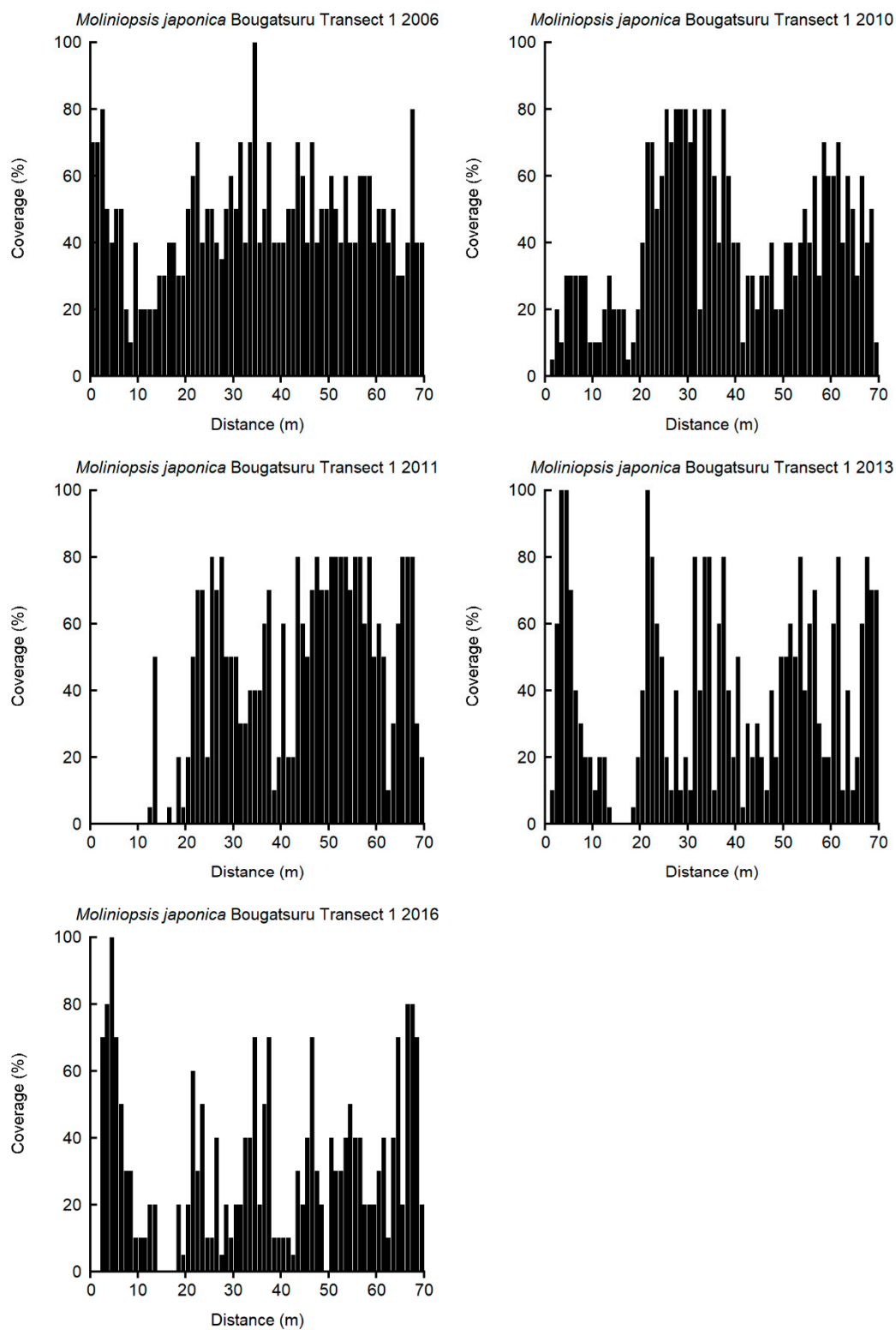


Figure S8(4) Coverage of *Moliniopsis japonica* on the Bougatsuru transect No. 1.

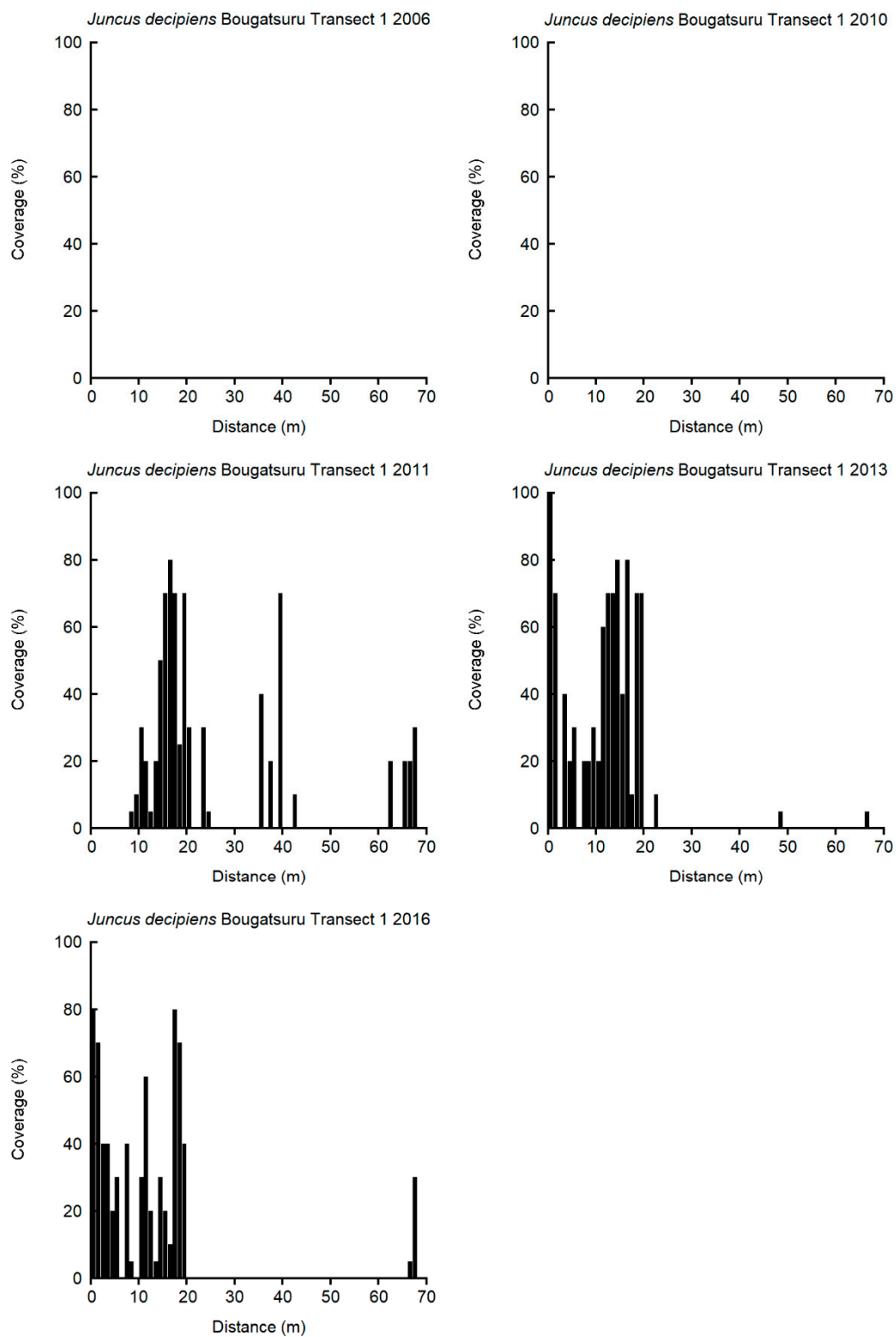


Figure S8(5) Coverage of *Juncus decipiens* on the Bougatsuru transect No. 1.

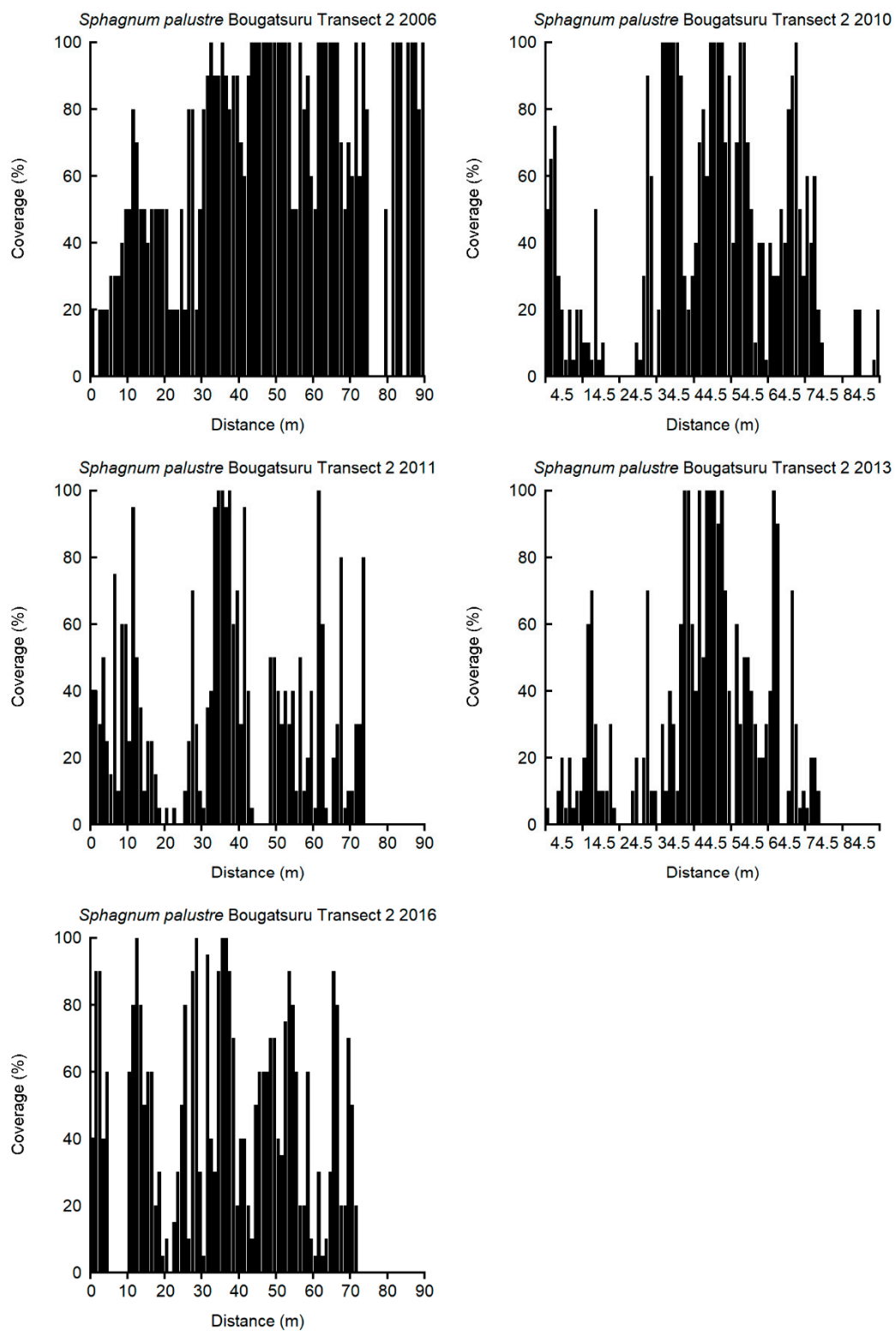


Figure S9(1) Coverage of *Sphagnum palustre* on the Bougatsuru transect No. 2.

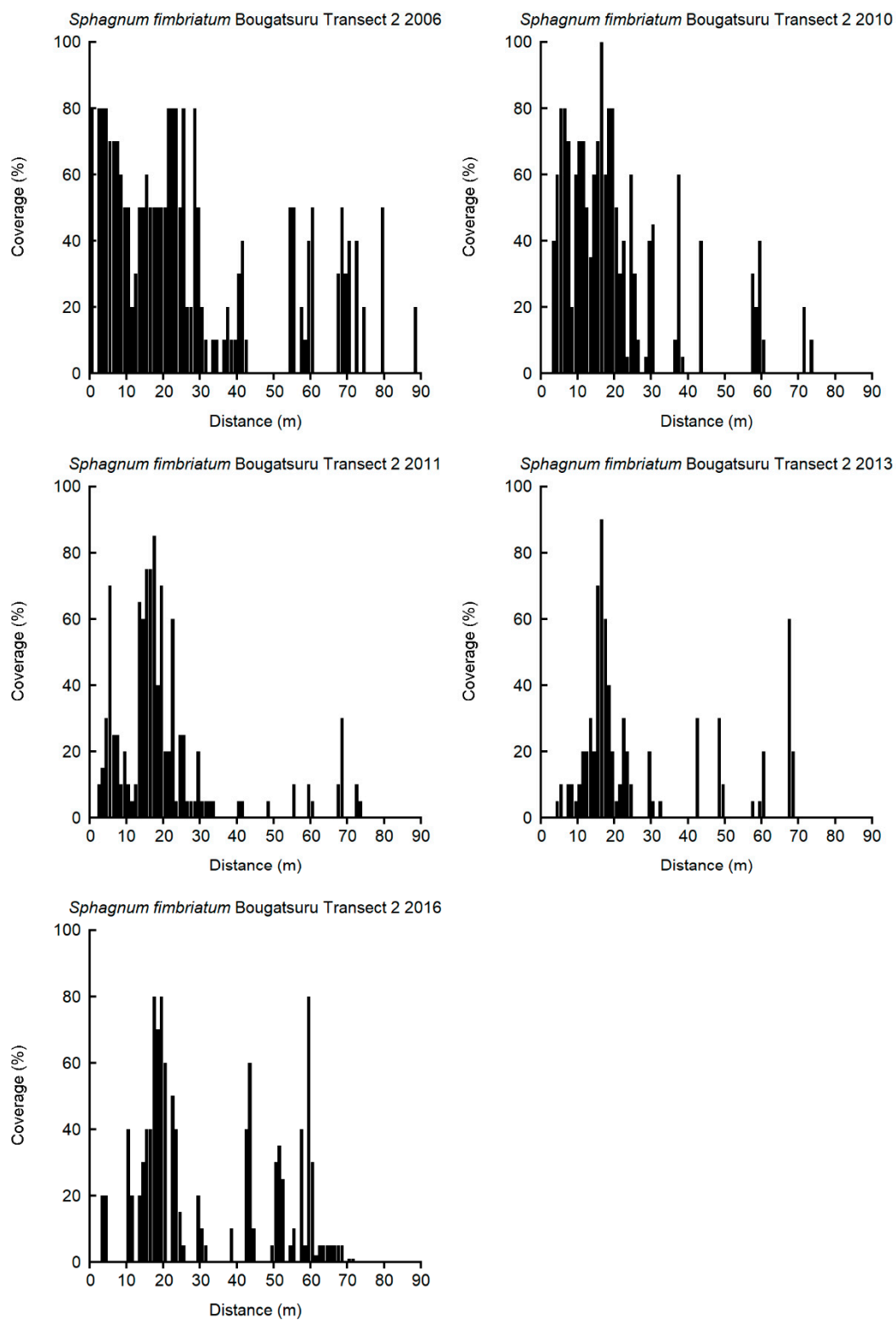


Figure S9(2) Coverage of *Sphagnum fimbriatum* on the Bougatsuru transect No. 2.

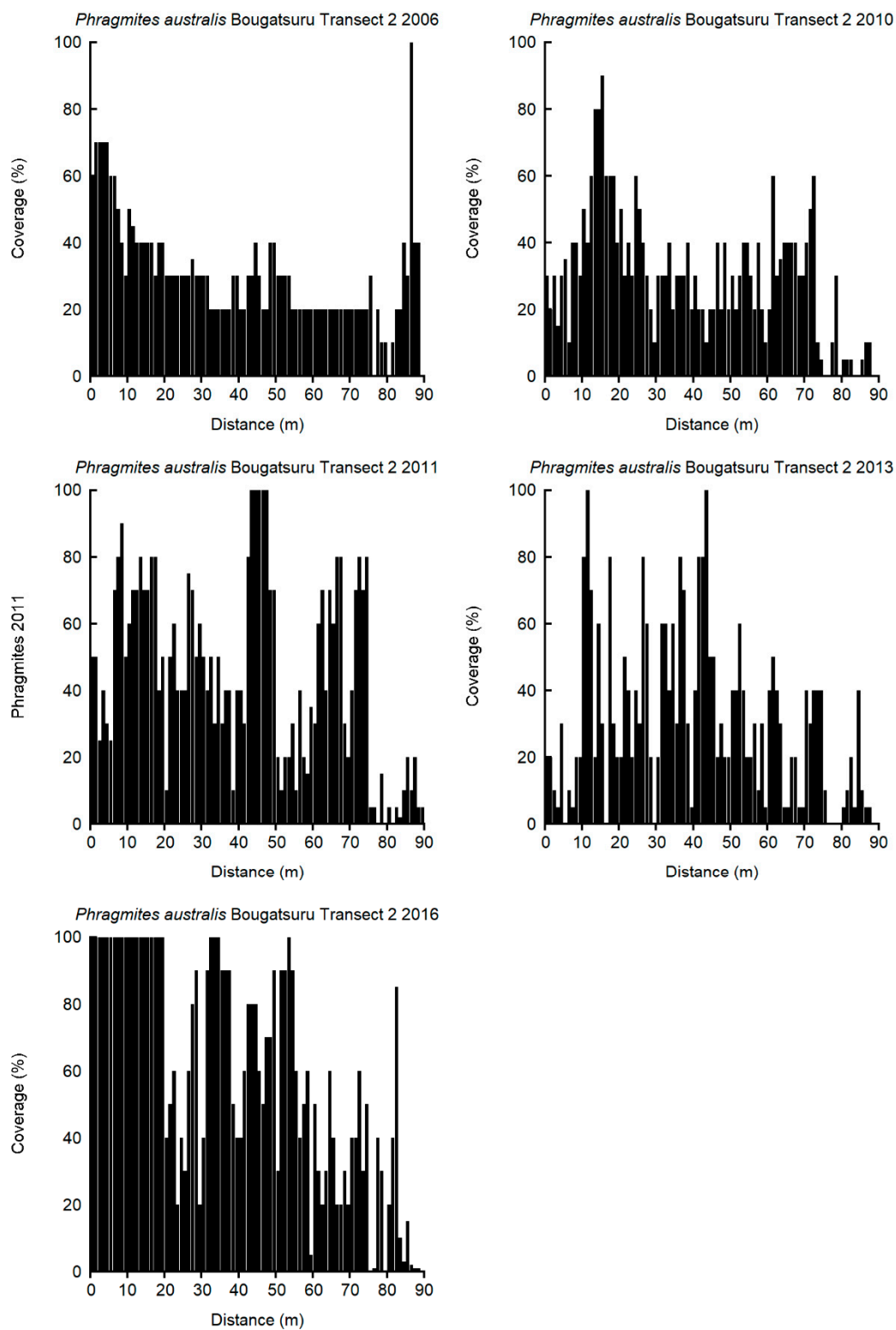


Figure S9(3) Coverage of *Phragmites australis* on the Bougatsuru transect No. 2.

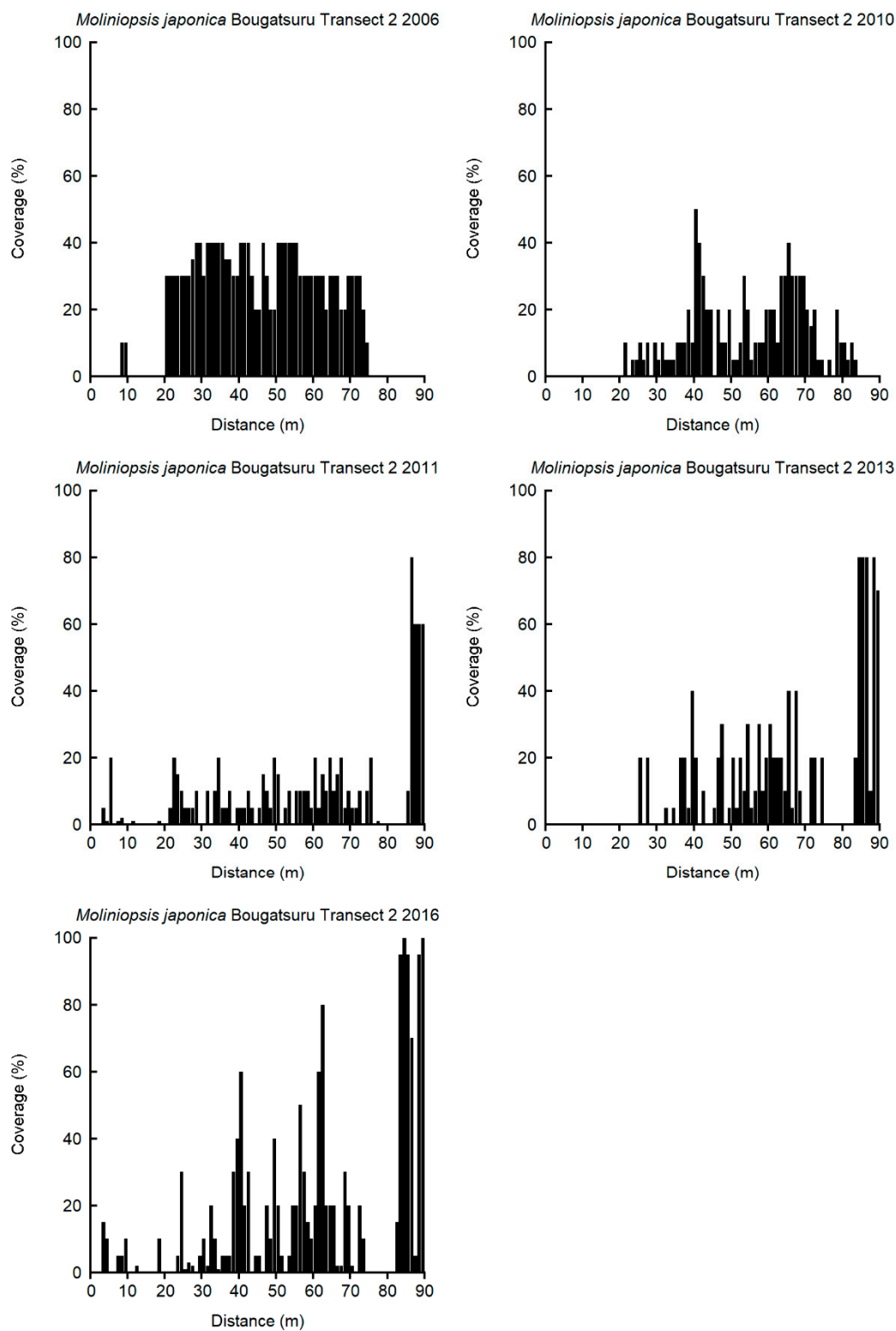


Figure S9(4) Coverage of *Moliniopsis japonica* on the Bougatsuru transect No. 2.

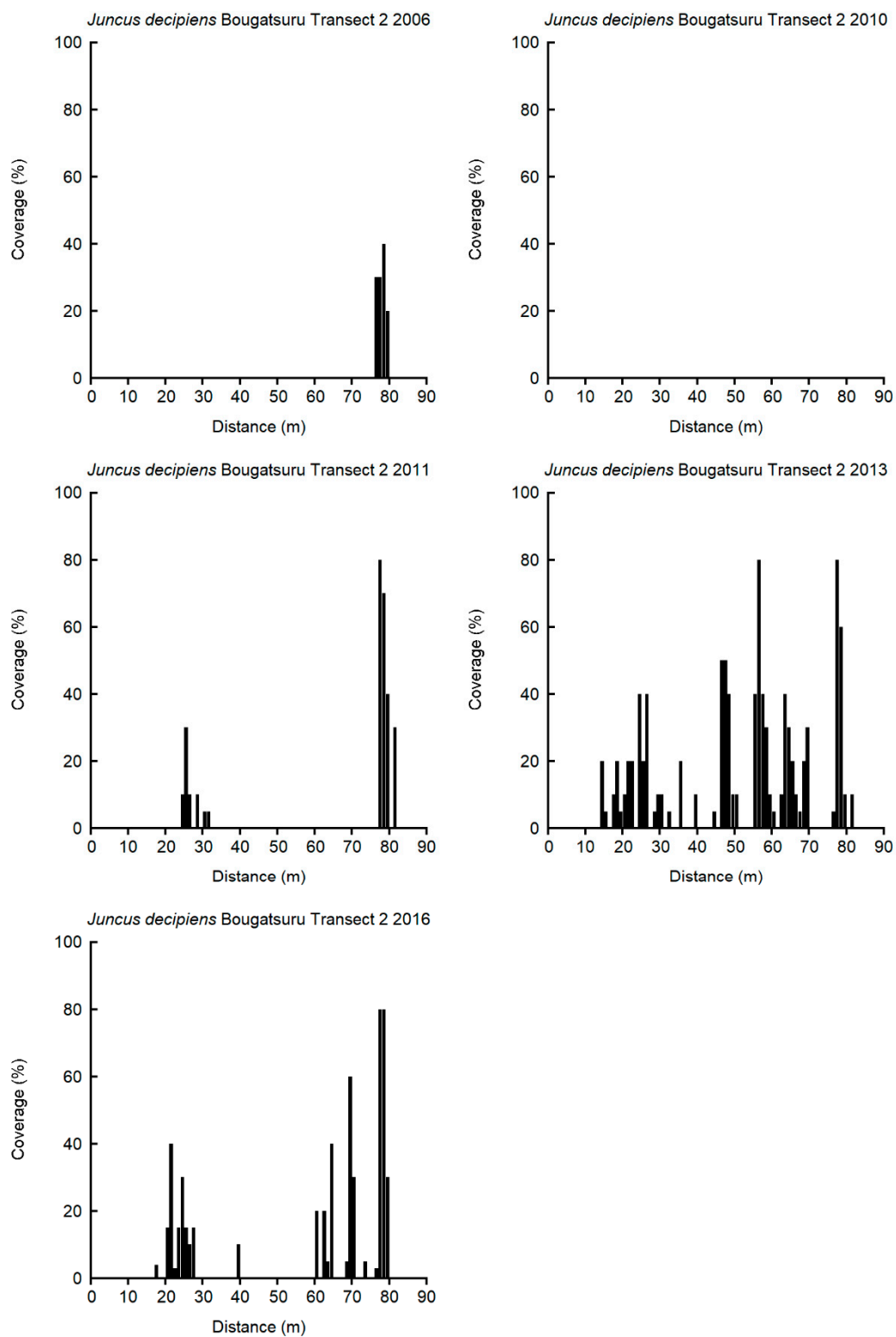


Figure S9(5) Coverage of *Juncus decipiens* on the Bougatsuru transect No. 2.

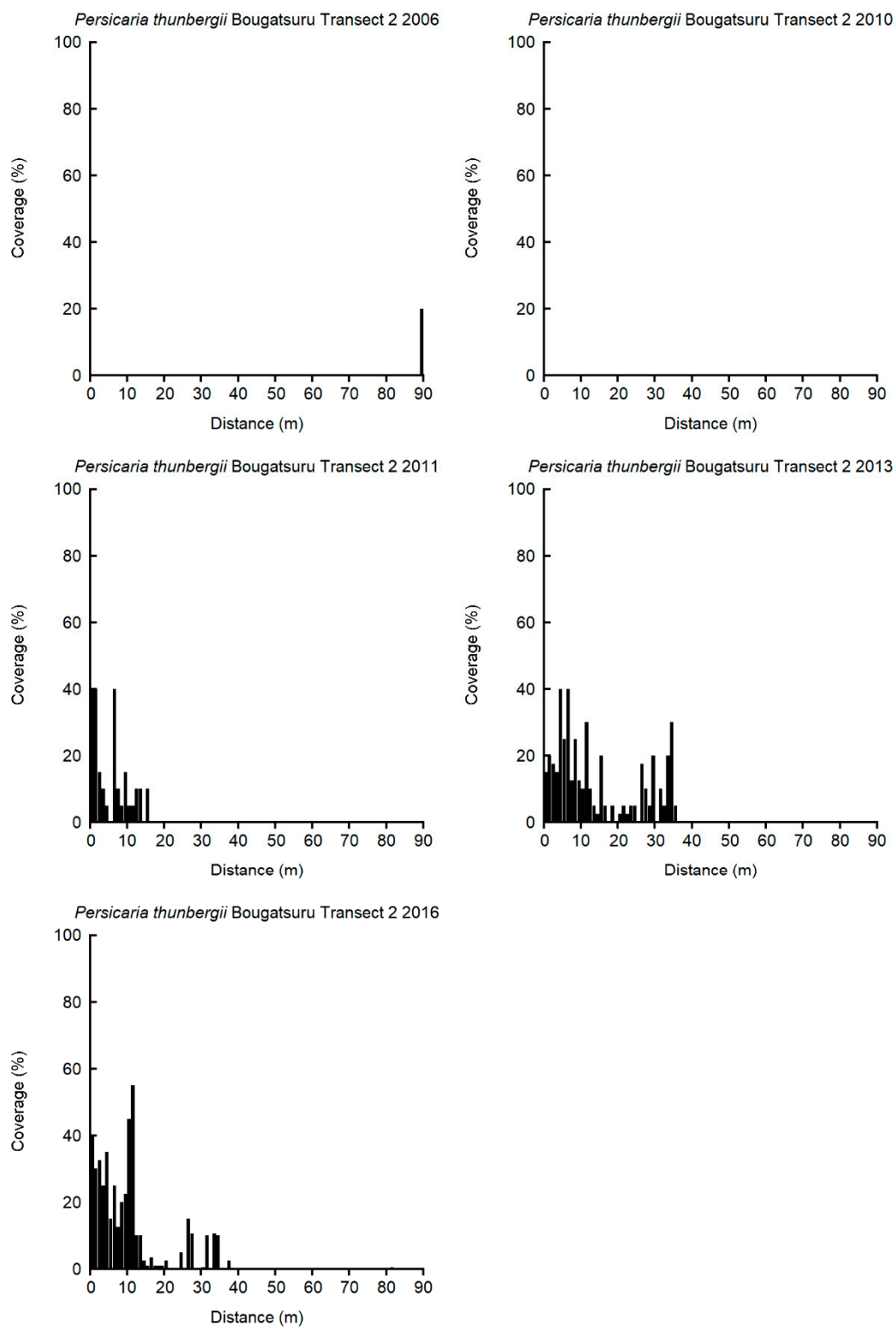


Figure S9(6) Coverage of *Persicaria thunbergii* on the Bougatsuru transect No. 2.