

Figure S1. LST and Tair_calc (°C) variability in the study area in winter: (a) 2009-01-17; (b) 2011-01-07; (c) 2011-01-23; (d) 2017-12-09.

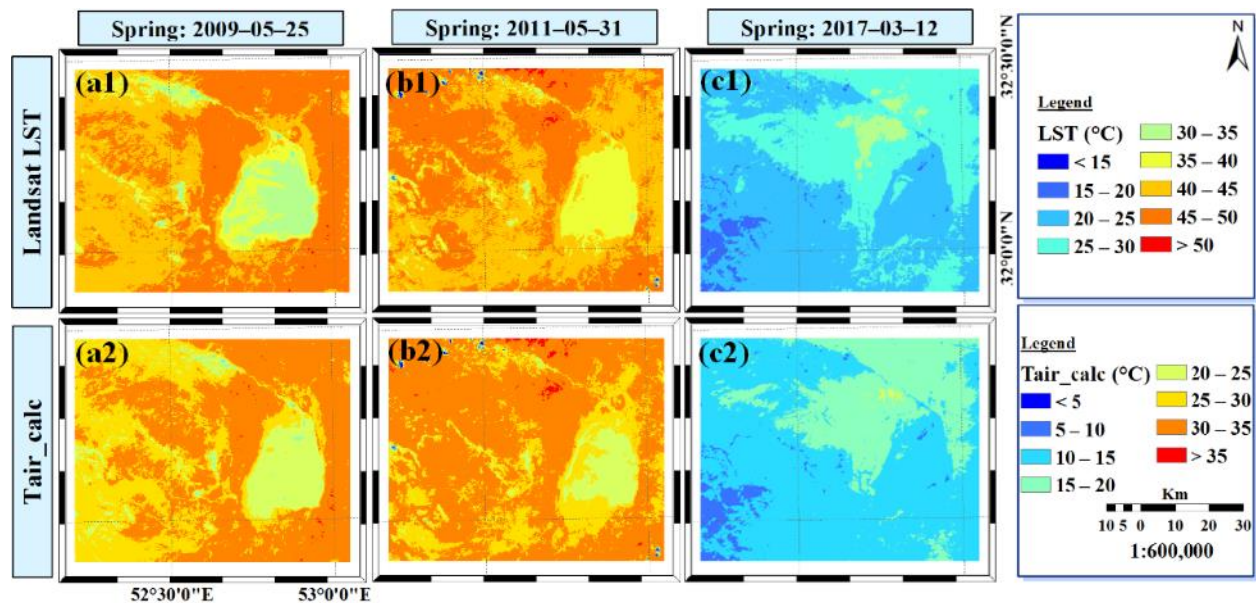


Figure S2. LST and Tair_calc (°C) variability in the study area in spring: (a) 2009-05-25; (b) 2011-05-31; (c) 2017-03-12.

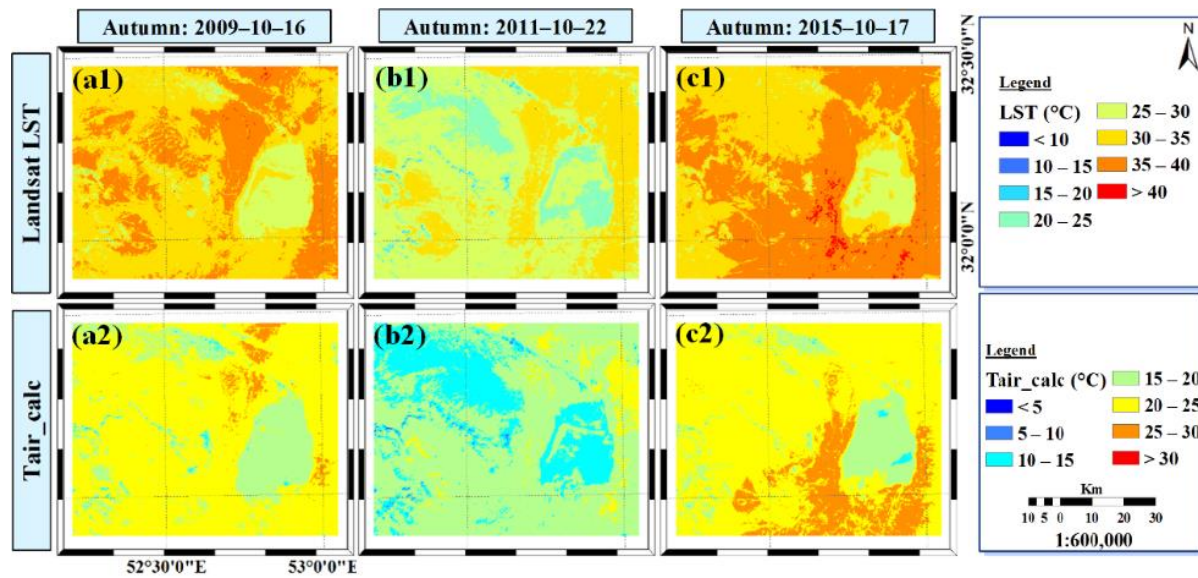


Figure S3. LST and Tair_calc (°C) variability in the study area in autumn: (a) 2009-10-16; (b) 2011-10-22; (c) 2015-10-17.

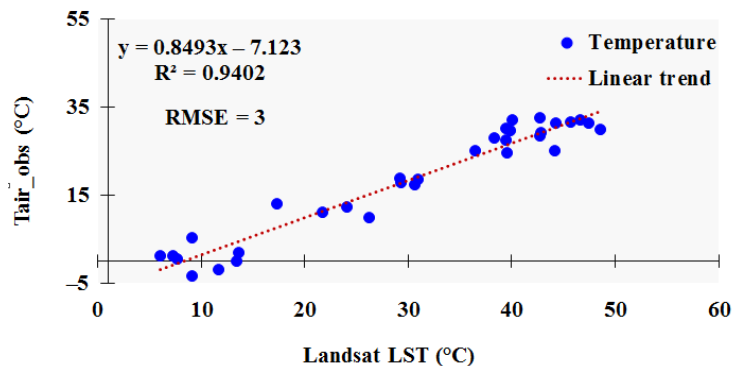


Figure S4. Linear regression between Landsat LST and Tair_obs values at nearby meteorological stations (Varzaneh and Hasanabad) on the selected 16 days.

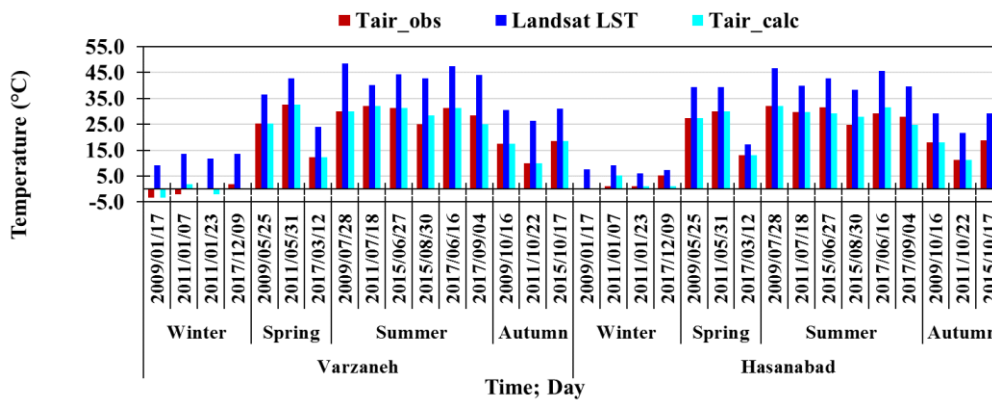


Figure S5. Tair_calc, Tair_obs and LST values at the meteorological stations on the selected 16 days.