

## Article

# Statistical Analysis for Water Quality Assessment: A Case Study of Al Wasit Nature Reserve

Areej Mohammed <sup>1</sup>, Fatin Samara <sup>2</sup>, Ayman Alzaatreh <sup>3,\*</sup> and Sandra L. Knuteson <sup>2</sup><sup>1</sup> Department of Industrial Engineering, Engineering Systems Management Program, American University of Sharjah, Sharjah P.O. Box 26666, United Arab Emirates<sup>2</sup> Department of Biology, Chemistry and Environmental Sciences, College of Arts and Sciences, American University of Sharjah, Sharjah P.O. Box 26666, United Arab Emirates<sup>3</sup> Department of Mathematics and Statistics, College of Arts and Sciences, American University of Sharjah, Sharjah P.O. Box 26666, United Arab Emirates

\* Correspondence: aalzaatreh@aus.edu

**Abstract:** This study presents a comprehensive data analysis using univariate and multivariate statistical techniques as a tool to establish a baseline for the assessment of water quality parameters in environmental compartments. The Al Wasit Nature Reserve is a hypersaline wetland in the UAE with a spatial fluctuation in water parameters as water flows above ground as well as ponds forming in deeper areas and over the year due to the arid climate and seasonality. Water samples were collected at fifteen sites along the hypersaline wetland over three periods during the months of February to March 2021 as temperatures started to rise with the oncoming summer. Water quality parameters, including the temperature, pH, turbidity, dissolved oxygen (DO), oxidation-reduction potential (ORP), electrical conductivity (EC), chemical oxygen demand (COD), chloride, ammonia, and nitrates, were measured. The results of the data analysis were used to group the sites, which were divided into three groups with similar water quality characteristics. Correlation assessments between all studied parameters revealed significant differences in the values of eight of the evaluated parameters between the three identified clusters, with only the nitrate concentrations and dissolved oxygen parameters not being significant. It was found that one of the three clusters (cluster 1) performed better than the other two for most of the studied parameters. The results of this study demonstrate the applicability and the potential time and cost savings of the usage of data analysis tools for long-term data monitoring in the wetland and other environmental systems worldwide.

**Keywords:** wetlands; water quality; ANOVA; chemical oxygen demand; principal component analysis (PCA)

**Citation:** Mohammed, A.; Samara, F.; Alzaatreh, A.; Knuteson, S. Statistical Analysis for Water Quality Assessment: A Case Study of Al Wasit Nature Reserve. *Water* **2022**, *14*, 3121. <https://doi.org/10.3390/w14193121>

Academic Editors: Roohollah Noori and George Arhonditsis

Received: 31 August 2022

Accepted: 30 September 2022

Published: 3 October 2022

**Publisher's Note:** MDPI stays neutral with regard to jurisdictional claims in published maps and institutional affiliations.



**Copyright:** © 2022 by the authors. Licensee MDPI, Basel, Switzerland. This article is an open access article distributed under the terms and conditions of the Creative Commons Attribution (CC BY) license (<https://creativecommons.org/licenses/by/4.0/>).

## 1. Introduction

Wetlands are dynamic ecosystems covering approximately seven percent of the earth's total surface [1]. A wetland is an area of land typically saturated with water standing above a soil surface [2]. Regional and local variations in topography, soil, climate, hydrology, chemistry, vegetation, and human activity influence wetlands [3]. Hence, they are classified into different categories depending on their geomorphic settings, water sources, and hydrodynamics. Wetlands can be natural, artificial, stagnant, flowing, brackish, and salty [1]. In a wetland, the water level can vary significantly between permanently flooded and seasonally flooded areas with saturated soils [4]. Wetland habitats are important for birds because they meet their needs for feeding, nesting, and roosting [5]. In general, wetlands have a diverse range of life and provide shelter for a variety of animals and plants.

Healthy, natural wetlands are crucial to human life. Global wetlands cover over 12.1 billion hectares, where 93% are inland systems and 7% are marine and coastal. The most

significant areas of wetlands are concentrated in Asia, with approximately 32% of the global area, followed by North America with 27% and Latin America and the Caribbean with 16%, while 13% are in Europe, 10% are in Africa, and only 3% are in Oceania [6]. Despite the fact that wetlands play an essential role in achieving the Sustainable Development Goals [7,8], as shown in the Aichi Biodiversity Targets, the Paris Agreement on climate change, and other related commitments, wetlands face various challenges. The UN Environment World Conservation Monitoring Centre reports that the number of wetlands declined over the period from 1970 to 2015 [9]. Consequently, the plants, animals, and other species living in these wetlands are at risk of extinction. In addition, drainage, invasive species, unsustainable use, and pollution are serious issues that wetlands suffer from. These wetlands play a critical role in providing ecosystem services such as food security, climate change mitigation, erosion protection, and biodiversity, which encouraged several organizations to assess and promote wetland conservation and wise wetland use. In this regard, in 2018 the Ramsar Convention, an international legal treaty essentially focused on wetlands, highlighted key steps to conserve and regain healthy wetlands [10].

The United Arab Emirates has made significant progress in considering environmental issues and improving the perceptions of the value of the environment and its impact on overall development in the UAE. The Ministry of Environment and Water was established in 2006, and its role was expanded in 2016 to include international and national climate change issues. The issue of the conservation and development of wildlife grabbed significant interest in the United Arab Emirates (UAE). The country has made huge efforts to protect and reintroduce endangered species to their natural habitat through adopting regulations, monitoring their implementation, and establishing and expanding protected areas [11]. As terrestrial and marine diversity is a fundamental part of the UAE's heritage, the Ministry of Climate Change and Environment has continuously worked to strengthen its efforts through the implementation of a variety of projects and initiatives under the National Biodiversity Strategy [12]. In the UAE, wetlands are key areas for bird protection, especially migratory birds. Local increases in wetlands through conservation and construction efforts have helped bird conservation efforts [13]. A key protected area in the UAE is the Al Wasit Nature Reserve in the northern part of Sharjah, which is significant for bird ecology in the Emirate of Sharjah. It is a distinctive location with a natural lake sustained by the upwelling of underground water. The most outstanding feature of the reserve is the diverse ecosystem with different habitats and vegetation types, including sand dunes, salt marshes (sabkhas) associated with ponds, and a large open lake. In 2007, the Al Wasit Wetland was declared a protected area by Emiri Decree No. (7) [14]. The reserve has great environmental importance because it is a beautiful natural habitat where plants remove harmful emissions and dust from the air by increasing the amount of oxygen, which has a positive effect on global warming. It is an important place in the UAE to preserve the natural ecological balance and enhance ecotourism through the diversity of ecosystems. It serves as a shelter for local and migratory birds as well as a focal point for neighborhood residents. It has rich biodiversity, including 198 different species of birds and a variety of small mammals, reptiles, and insects as well as rare insect species that have been sighted and recorded for the first time in the UAE [14]. However, the Al Wasit Nature Reserve was previously reported to be threatened by chemical dumping and other waste dumping, perennial inundation, and drowning. A previous study in the wetland showed fecal contamination in the surface water, but no additional significant contamination was reported [15].

Environmental data are important to assess the water quality and the status of an ecosystem, but oftentimes the values alone do not significantly discriminate among the sites of studies. In aquatic ecosystems, physical and biological factors can determine the water quality. Routine water quality monitoring involves several parameters such as the dissolved oxygen, pH, conductivity, total nitrogen, and total phosphorus, among others, and may vary depending on the required information of the area, the utilized methods,

the sampling size, and the goal of the project. Fathi et al. used parameters including nitrate, nitrite, ammonium, alkalinity, hardness, turbidity, conductivity, dissolved oxygen, and pH to calculate the water quality index (WQI) of a wetland [16]. Some multivariate statistical techniques, such as principal component analysis (PCA), have previously been used in the interpretation of the results and to reduce the dimensionality of a multivariate dataset while maintaining its original structure [17]. In addition, the application of various statistical techniques such as cluster analysis, discriminant analysis, and ANOVA analysis helps in the interpretation of complex datasets to better understand the water quality of a system, enabling the identification of possible factors affecting the water system and providing a valuable tool for water resource management as well as a quick solution to pollution problems [18,19]. The use of some nonparametric multivariate statistical approaches was also beneficial in assessing the different levels of some pollutants, such as arsenic, in the aquifers of the Calabria region [20]. A geochemical modeling approach was also used to study arsenic pollution through investigating water–rock interactions and applying reaction path modeling [21]. In this study, various univariate and multivariate data analysis techniques were performed on the Al Wasit Nature Reserve area in the United Arab Emirates to investigate how water quality parameters change at different sampling sites and to determine which variables are most responsible for the variations in water quality. The findings of this study will greatly benefit scientists by facilitating future sampling collections and reducing the time and effort required for these activities.

## 2. Literature Review

The concepts that are covered in the literature are extensive and span different areas of research and practice. This section reviews the literature from several sources by focusing the review of the literature on water quality assessment methods such as statistical data analysis in the Al Wasit Nature reserve in the UAE in particular. This section identifies the gaps in the body of research knowledge and the motivations for this research.

### 2.1. Importance of Wetlands

Wetlands can effectively minimize the number of pollutants and effluents before discharge to rivers and other resources. Some wetlands are natural, while others are constructed (artificial). The performance of wetlands in improving water quality and reducing runoff pollution has been described in several studies [22,23]. In addition, wetlands provide diverse watershed functions, including important wildlife habitats, floodwater storage, groundwater recharge, and water filtration. The global decline in wetlands has been related to amphibian reduction, the loss of reptile and invertebrate habitat, and changes in hydrologic states [24–26]. For these reasons, wetlands have been considered in global policies and targets. For example, they are considered an important element in the 2030 Agenda for Sustainable Development because they are necessary for achieving many of the 17 United Nations Sustainable Development Goals, namely (i) SDG 6, which focuses on water sanitation; (ii) SD 14, which motivates the protection of coastal and marine areas; and (iii) SDG 15, which promotes the sustainable use and protection of inland freshwater ecosystems and their services [27]. In addition, wetlands are of great relevance to the “Aichi Biodiversity Targets”, which are part of the Strategic Plan for Biodiversity (2011–2020) [28]. Many of these targets focused on stopping ecosystem loss, including Target 5, which aimed to wipe out the loss of natural habitat by 2020. Other targets aimed to preserve inland, coastal, and marine water and promote the sustainable use of aquatic species and the management of aquaculture [29]. Moreover, the UN Convention to Combat Desertification set a target to halt land degradation, which has a direct impact on wetlands such as peatlands and rivers [30]. Wetlands are also part of several international agreements, such as the 2015 Paris Agreement, which called on countries to include wetland protection and management in their nationally determined contributions to addressing

climate change with nature-based solutions [31]. Accordingly, it is important to understand the risks and challenges associated with wetlands in order to effectively set regulations to mitigate risks and achieve the aforementioned targets.

Wetland assessment and monitoring are essential to the understanding of how wetlands are evolving over the long term, how species richness and water quality are changing over time, and how they are deteriorating. Natural wetlands are in long-term decline worldwide. Both inland and marine/coastal wetlands have declined by about 35% from 1970 to 2015. In contrast, man-made wetlands have doubled during this period and account for 12% of today's wetlands. Nevertheless, this increase in man-made wetlands has not compensated for the loss of natural wetlands [6]. Due to this fact, expectations of a decline in wetland-dependent species have been raised, with concerns of extinction. In this context, the International Union for Conservation of Nature Red List assesses the level of threat of extinction of animal and plant species, showing that 25% of species that depend on inland wetlands are threatened with extinction. It has also shown that inland species dependent on rivers and streams are more threatened globally than species in swamps and lakes. In addition, the risk of extinction is higher for species in inland wetlands than for their terrestrial counterparts, and wetland-dependent species are most at risk in tropical areas [32]. Using the Wetland Living Planet Index, the percentage of wetland-dependent species declined by 39% between 1970 and 2011 [24]. Ultimately, water quality is a crucial concern for human well-being [33], yet the signs indicate that it is negatively impacted over time. Despite the fact that a decline in water quality leads to wetland degradation, wetlands have a significant role in enhancing water quality through ecosystem-regulating services [34]. The preceding discussion suggests that the main challenges facing wetlands are wetland degradation, declines in wetland-dependent species, and water quality degradation. However, since this study aims to assess and analyze the water quality parameters in wetlands, specifically in the Al Wasit Wetland, the next section will focus more on the problem of water quality in wetlands and the main trends related to it.

## 2.2. Water Quality of Wetlands and Statistical Analysis Techniques

Many factors play important roles in affecting the water quality in wetlands, including the degree of wastewater treatment, the erosion of topsoil, nutrient loading and eutrophication, pathogen pollution, salinity, and thermal stress. Untreated wastewater is a major threat to water quality. Therefore, proper treatment should be carried out before the water enters wetlands. It was shown by [35] that the treatment of industrial and municipal wastewater in countries has a positive correlation with the country's income. On average, 70% of wastewater is treated in high-income countries, followed by 38% in upper-middle-income countries, while lower-middle-income countries treat about 28% of their wastewater, and only 8% of wastewater is treated in low-income countries. In addition, according to the United Nations World Water Development report [36], over 80% of the world's wastewater is discharged into wetlands without adequate treatment. This creates serious problems that negatively impact wetland water quality. The next challenge affecting water quality is topsoil erosion, which leads to nutrient loading and the eutrophication of wetlands, considered the greatest challenge to water quality. In 2017, the United Nations reported that by 2050, about one third of the population will be exposed to water with excessive nitrogen and phosphorus [37]. In addition, increased sedimentation may harm aquatic biodiversity, e.g., [38,39], while on the other hand, the retention of sediment behind dams would minimize sediment loading in coastal and deltaic areas, leading to the subsidence and loss of wetlands. Moreover, the preliminary results from the Global Water Quality Monitoring Program show that one third of all river stretches in Latin America, Africa, and Asia are already affected by severe pathogen pollution [40], which may lead to serious health issues and diseases such as cholera and giardiasis [27]. Another important factor in water quality is salinity, which can increase due to vegetation clearing and the irrigation of saline soils as a result of the infiltration of water through the soil

profile [41]. The excessive extraction of groundwater and the rise in sea level promote saltwater intrusion [42]. Once they occur, soil salinization and groundwater salinity are considered permanent and irremediable problems [43]. Salinity plays an important role in this study, as the Al Wasit Wetland is considered to be a hypersaline wetland. A hypersaline lake is a body of water with a concentration of salt exceeding 35 g/L [44]. It has been reported that all wetlands are initially freshwater water bodies, and they eventually move to more saline states due to natural and anthropogenic factors [45]. Additionally, according to Delaney et al. (2017), saline wetlands report conductivities ranging between 8.8 and 50 mS/cm, and those higher than 50 mS/cm are considered hypersaline. The eutrophication of wetlands is another important problem caused by nitrogen oxides, ammonia, and other compounds released from many sources, such as fertilizers and animal wastes in agriculture and landscaping and the release of treated sewage waters into the environments [46]. Finally, the thermal pollution of wetlands, associated with power plants and industry, reduces oxygen levels, alters the food chain, reduces biodiversity, and promotes the invasion of thermophilic species [47].

Since water is an invaluable and radical element for life in wetlands, providing a range of services to ecosystems and serving as a central habitat for various species, the water quality of surface and groundwater systems has become an important field of research in the last century and is still one of the most important trends in recent decades. Statistical data analysis is an essential research tool for studying relationships, patterns, and trends among variables and has applications in various research fields, including the environmental field, where statistical analysis has played an important role in assessing the water quality in different regions. For example, a case study on the Fuji River Basin in Japan [17] illustrated the usefulness of multivariate statistical analysis techniques for the analysis and interpretation of complex datasets and for water quality assessment. The author performed a discriminant analysis to reduce the dimensionality of the large dataset and to identify a few indicator parameters responsible for large variations in water quality. In addition, factor, principal component, and cluster analyses were applied to surface water quality data in the Tahtali Basin in Turkey [18]. It was concluded that agricultural use and domestic discharges controlled the surface water quality. In addition, a cluster analysis was performed to group the sites based on variable levels. Agricultural discharges were found to strongly influence the north and northeast areas of the region. These techniques were useful in helping managers understand the complex nature of water quality problems and set priorities for improving water quality. Moreover, Apollaro et al. [20] adopted a multivariate nonparametric technique to investigate the different levels of concentration of some chemical elements in ground water, such as arsenic, which is considered to be one of the most monitored pollutant elements worldwide due to its harmful effects on human health. In addition, a geochemical modeling approach was also used by [21] to address arsenic pollution while studying water–rock interactions and applying reaction path modeling to investigate the rock-to-water release of arsenic and the fate of this pollutant in crystalline aquifers. Another nonmetric multidimensional-scaling analysis was used by [19] to investigate the variation associations of abiotic and biotic parameters among and within three constructed wetlands in metropolitan Taipei. Further investigation was conducted in [19] to test the pollutant-removal performance of the wetland systems.

According to Gazzaz [48], a latent structure of the Kinta River (Malaysia) water quality dataset was identified using three different multivariate statistical techniques (factor analysis, cluster analysis, and discriminant analysis). The factor analysis identified the parameters responsible for the variations in water quality of the Kinta River. The cluster analysis grouped the monitoring sites into two clusters, one for sites with low water pollution and the other with relatively high river pollution. The discriminant analysis confirmed these clusters and created a discriminant function to predict the membership of new or unknown samples in a cluster. These techniques showed the potential to appropriately reduce the number of water quality parameters and the number of monitoring

stations for long-term monitoring. Furthermore, the important role of wetlands in decreasing pollutants and wastewater before discharging into rivers and other water sources encouraged the researchers in [49] to invest time to perform statistical techniques and a pattern analysis, which resulted in time and cost efficiency for data monitoring purposes in a free constructed wetland.

The novelty of this study is that it serves as a baseline to demonstrate the use of statistical analysis techniques to evaluate wetland water quality data. Furthermore, it will play a role in determining which sites are representative and which require continuous monitoring.

### 3. Materials and Methods

#### 3.1. Study Area

The Al Wasit Nature Reserve (Al Wasit), shown in Figure 1, is located in the northern Sharjah suburb in the United Arab Emirates (UAE). The reserve is considered one of the most ecologically diverse conservation sites, and it is a protected area for both captive and wild birds [50]. The National Reserve was previously known as Al Ramtha Lagoon, and it is categorized as a saltmarsh (sabkha), giving it a hypersaline nature [51]. The wetland is currently conserved by the Environment and Protected Areas Authority of the Sharjah Government. For the purpose of this study, we have characterized the different areas into ponds, including the big pond (shoreline and middle) occupying the biggest area near the shore and the middle deeper areas; followed by the middle pond, connecting the pond with above- and below-ground flows between the big and upper ponds, and the upper pond (the final water destination).



**Figure 1.** Map of study area and water quality sampling sites (listed 1–15) in Al Wasit Wetland.

#### 3.2. Sampling and Water Quality Assessments

Samples were collected from fifteen locations along the Al Wasit Wetland biweekly during the months of February to March 2021. The locations were selected based on the available surface water and were representative of the whole reserve. At least three observations were recorded per location. The studied parameters are shown in table 1. An on-site water quality analysis was conducted using an HI 9829 multiparameter (Hanna Instruments, Singapore) to measure the temperature, pH, turbidity, dissolved oxygen (DO), oxidation-reduction potential (ORP), and electrical conductivity (EC) at various locations on the wetland. Additionally, surface water samples were collected simultaneously in Nalgene or polypropylene bottles and transported to the laboratory for an analysis of



chemical oxygen demand (COD), chloride, ammonia, and nitrates. Ion-selective electrodes (ISEs) for ammonia, nitrates, and chloride were used to measure samples in the laboratory (HI 4101, HI 4113, and HI 4107 from Hanna Instruments, Singapore). Chloride samples were diluted due to their high salt content. The chemical oxygen demand (COD) was tested using HI 93754C-25 HR and an HI 83399 multiparameter photometer (Hanna Instruments, Rhode Island, United States). Guiding standards for hypersaline wetlands are not available. Hence, the marine water quality guiding standards published by the Ministry of Climate Change and Environment (MOCCAEE) and typical concentrations found in similar hypersaline environments were used for comparison purposes and are shown in the fourth column of Table 1 (MOCCAEE, 2020) [52].

**Table 1.** Parameters studied in Al Wasit Nature Reserve and units of measurement.

Parameter Name	Representation	Unit of Measurement	Guiding Standards
Electrical conductivity	EC	$\mu\text{S}/\text{cm}$	>50,000 **
Dissolved oxygen	DO	mg/L	>5 *
Oxidation-Reduction Potential	ORP	mv	-
Potential Hydrogen	pH	-	6.0–9.0 *
Turbidity	turb	FNU (Formazin Nephelometric Units)	<75 *
Temperature	Temp	$^{\circ}\text{C}$	19–35 *
Chemical oxygen demand	COD	mg/L	<40 *
Chloride	Cl	mg/L	26,000 ***
Ammonia	NH <sub>3</sub>	mg/L	<0.06 *
Nitrate	NO <sub>3</sub>	mg/L	<50 *

Note: \* (MOCCAEE, 2020, [52]), \*\* (Delaney et al., 2016, [46]), \*\*\* (Taher et al., 2012, [53]).

### 3.3. Statistical Analysis

Several statistical techniques were utilized to assess the water quality. In particular, a Pearson correlation analysis was performed to examine the associations among all pairs of the evaluated parameters. A hierarchical cluster analysis was used to group the 15 sites into three clusters based on the water quality parameters. A discriminant analysis was also used to verify the quality of the cluster analysis results. Finally, to investigate the differences between the three clusters, a nonparametric ANOVA test was used, followed by multiple comparison procedures, to detect the source of the differences among the three clusters for each parameter.

## 4. Results

The selected water quality parameters studied per site were recorded during each sample trip. On average, the temperature ranged from 25.33 to 30.52  $^{\circ}\text{C}$ , the pH ranged from 8.12 to 8.50, the electrical conductivity ranged from 27,541 to 116,547  $\mu\text{S}/\text{cm}$ , and the DO ranged from 6.81 to 10.88 mg/L, among others. To understand the differences between the sampling locations and parameters, all measurements were further analyzed using a Pearson's correlation analysis, multivariate statistical techniques, a cluster analysis (CA), and a linear discriminant analysis.

#### 4.1. Pearson Correlation Analysis

The relation between the measured water quality parameters was investigated using the Pearson correlation coefficient by testing its significance at a 5% level of significance (Proc corr procedure) using the SAS 9.3 software (SAS Institute, Cary, NC, USA). The results are shown in Table 2. According to [54], the correlation values can be interpreted as follows: (1–0.9) very high, (0.89–0.7) high, (0.69–0.5) moderate, (0.49–0.26) weak, and (0.0–0.25) very weak. From Table 2, moderate negative correlations were found between the chloride levels and the dissolved oxygen ( $r = -0.529$ ,  $p$ -value  $< 0.05$ ), pH and ORP ( $r = -0.507$ ,  $p$ -value  $< 0.05$ ), pH and EC ( $r = -0.580$ ,  $p$ -value  $< 0.05$ ), EC and  $\text{NH}_3$  ( $r = -0.598$ ,  $p$ -value  $< 0.05$ ), and  $\text{NH}_3$  and Cl ( $r = -0.534$ ,  $p$ -value  $< 0.05$ ). On the other hand, high positive correlations were observed between EC and both Cl and COD ( $r = 0.860$  and  $0.805$ , respectively,  $p$ -values  $< 0.05$ ). Moderate positive correlations were observed between ORP and EC ( $r = 0.528$ ,  $p$ -value  $< 0.05$ ), ORP and Cl ( $r = 0.512$ ,  $p$ -value  $< 0.05$ ), Turb and Cl ( $r = 0.565$ ,  $p$ -value  $< 0.05$ ), and Cl and COD ( $r = 0.649$ ,  $p$ -value  $< 0.05$ ).

**Table 2.** Pearson correlation matrix for the water quality parameters.

	Temp	pH	ORP	EC	DO	Turb	NH <sub>3</sub>	NO <sub>3</sub>	Cl	COD
Temp										
pH	−0.313 *									
ORP	−0.084	−0.507 *								
EC	0.259	−0.580 *	0.528 *							
DO	−0.015	0.527 *	−0.367 *	−0.414 *						
Turb	0.137	−0.402 *	0.458 *	0.598 *	−0.324 *					
NH <sub>3</sub>	−0.023	0.398 *	−0.243	−0.598 *	0.369 *	−0.541 *				
NO <sub>3</sub>	−0.198	0.439 *	0.025	0.320 *	0.179	0.291	−0.247			
Cl	0.305 *	−0.421 *	0.512 *	0.860 *	−0.529 *	0.565 *	−0.534 *	0.300 *		
COD	0.175	−0.404 *	0.333 *	0.805 *	−0.192	0.375 *	−0.472 *	0.387 *	0.649 *	

Note: \* Significant correlation at 5% level of error.

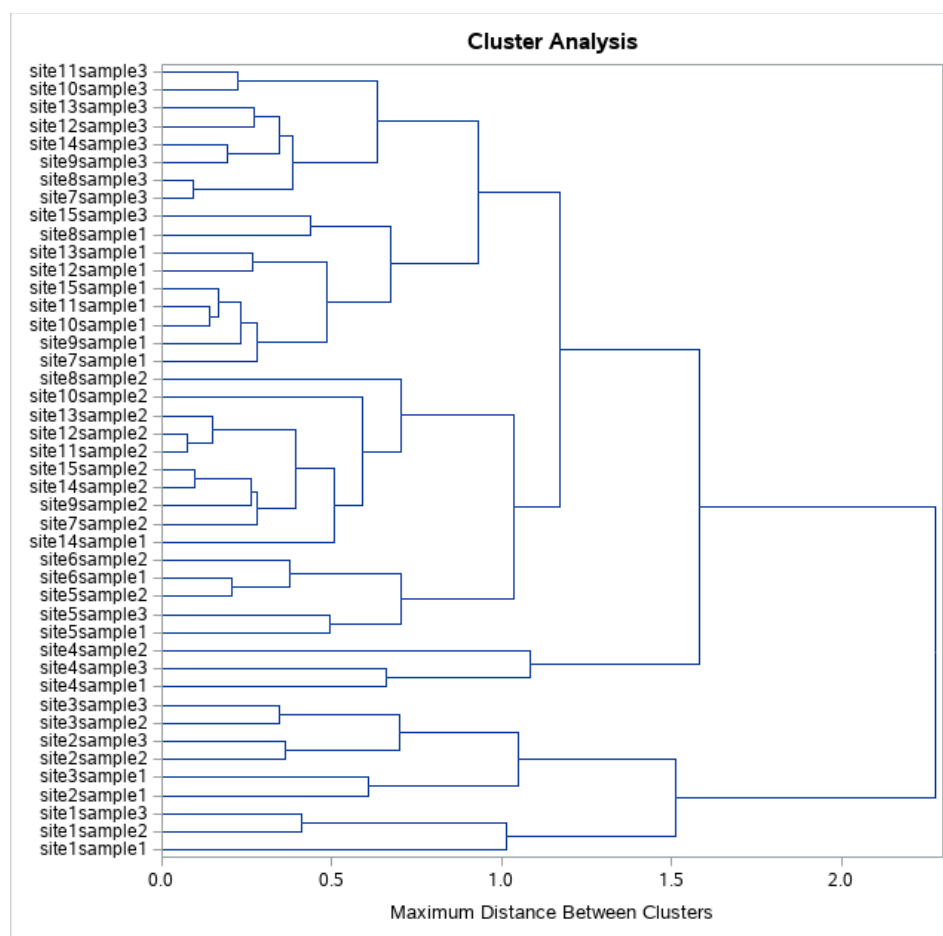
#### 4.2. Multivariate Statistical Analysis

To further understand the differences among the sampling locations, two multivariate statistical techniques, cluster analysis (CA) and linear discriminant analysis (LDA), were used. CA, which is an unsupervised multivariate technique, was used to cluster cases or objects based on their characteristics, resulting in clusters of objects with high internal homogeneity (within-cluster homogeneity) and low homogeneity between clusters [55]. LDA is a multivariate technique that can either predict or describe group differences [56]. This technique is frequently used to develop classification rules in order to assess the relative importance of variables in differentiating between groups [57].

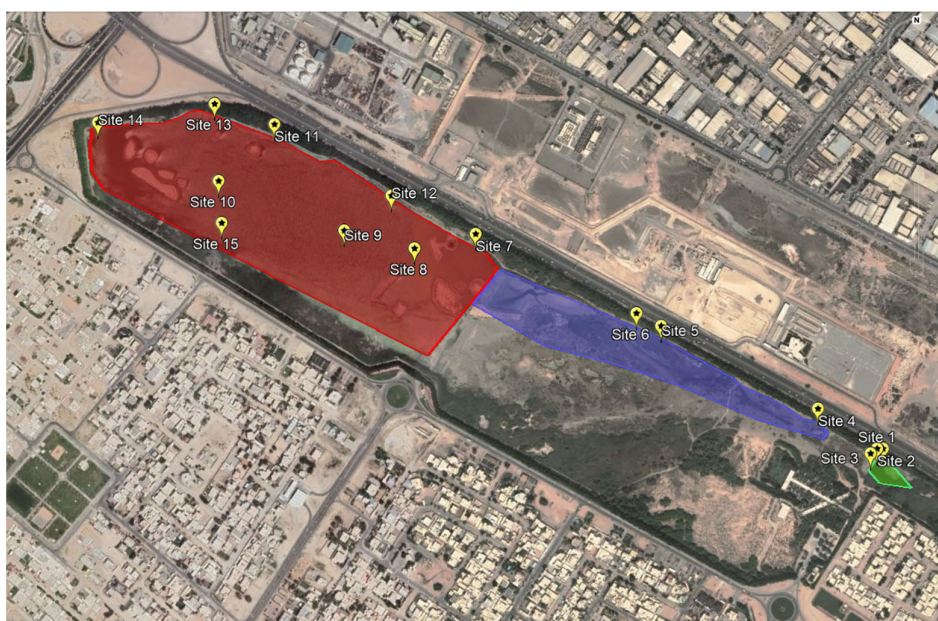
In this study, complete linkage hierarchical clustering was performed on the dataset using the proc varclus procedure in the SAS software in order to cluster all 15 sampling sites based on the water properties, which were determined based on the 10 measured parameters. By using the proc varclus procedure, the parameters were first normalized, and the Euclidean distance was used to find the distance and measure the similarity and dissimilarity between each pair of individual observations. Then, a complete linkage was used to measure the distance between each pair of clusters. The CA results are depicted in Figure 2. From the dendrogram in Figure 2, one can observe three clusters: sites 1, 2, and 3 are grouped into one cluster (Cluster 1); sites 4, 5, and 6 are grouped into one cluster (Cluster 2); and the remaining sites can be grouped together (Cluster 3). Furthermore, the three clusters can be classified based on their locations on the map as follows: Cluster 1 can be classified as the upper pond, Cluster 2 can be classified as the middle pond, and Cluster 3 can be classified as the big pond (see Figure 3). In the big pond, some of the sites



are located in the middle of the large pond, including sites 9,8,10, and 15 on the map (Figure 3), while the remaining sites, 11–14 and 7, were located on the shore of the big pond on the map (Figure 3). For more clarity, the locations of the three clusters in the wetland are shown in Figure 3. The cluster analysis grouped the 15 sites into three groups according to the water quality characteristics of the tested samples.



**Figure 2.** Dendrogram showing the clustering of the sampling sites based on the water quality characteristics of the Al Wasit Wetland.

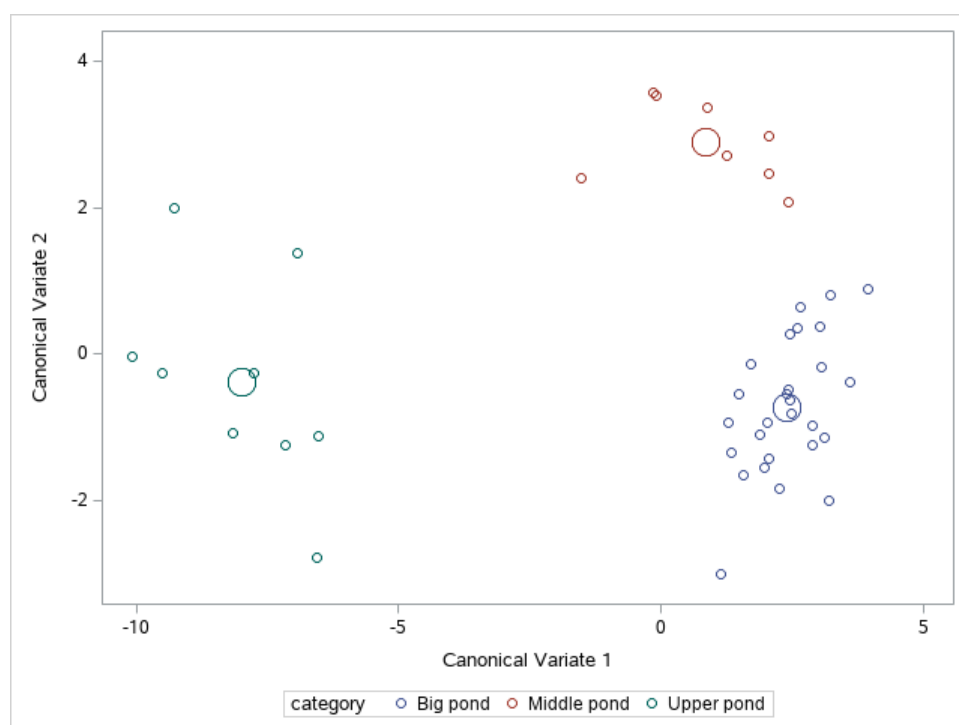


**Figure 3.** Location of three results-based clusters. Green represents Cluster 1, blue represents Cluster 2, and red represents Cluster 3.

In order to verify the CA results, LDA was performed using the proc discrim procedure in the SAS Software as a supervised technique to classify the three clusters based on the 10 water quality variables. Furthermore, a canonical analysis was used as a dimension reduction technique to visualize the three clusters in two dimensional graphs. Table 3 shows the results of the LDA analysis. The classification tables show 100% training accuracy and 95.83% cross-validation accuracy. Due to the small sample, cross-validation was based on the leave-one-out method, where in each iteration, one observation was used as a testing point and the remaining observations were used as training data. For further verifications of the quality of the CA results, a canonical plot based on the first two canonical variables is shown in Figure 4. It can be clearly seen that the figure supports the results from the CA.

**Table 3.** Classification matrix for discriminant analysis of spatial variation in water quality of Al-Wasit Nature Reserve.

Monitoring Ponds	%Correct	Pond Assigned by DA		
		Upper Pond	Middle Pond	Big Pond
Training model				
Upper pond	100%	9	0	0
Middle pond	100%	0	8	0
Big pond	100%	0	0	27
Total	100%	9	8	27
Cross-validated model				
Upper pond	100%	9	0	0
Middle pond	87.5%	0	7	1
Big pond	100	0	0	27
Total	95.83%	9	7	28



**Figure 4.** Canonical plot for all observations in each cluster.

#### 4.3. Cluster Segmentation

A cluster analysis provides an initial exploratory assessment of the spatial difference characteristics of the systems under study. In cluster segmentation, we are mainly interested in investigating the differences between the three clusters. For this purpose, the mean and standard deviation of each cluster are reported in Table 4, in addition to the overall minimums, maximums, and means of all ponds.

**Table 4.** Water quality parameters of the three clusters (means  $\pm$  standard deviations), minimums, maximums, and mean values.

Parameters	Upper Ponds	Middle Ponds	Big Ponds	Min	Mean	Max
Temperature ( $^{\circ}\text{C}$ )	$26.75 \pm 1.48$	$30.01 \pm 0.86$	$27.44 \pm 0.97$	24.61	27.76	30.81
pH	$8.45 \pm 0.12$	$8.19 \pm 0.12$	$8.16 \pm 0.11$	8.00	8.22	8.60
ORP (mv)	$41.12 \pm 30.31$	$50.57 \pm 4.92$	$80.34 \pm 7.72$	-20.67	66.91	95.17
EC ( $\mu\text{S}/\text{cm}$ )	$27,606 \pm 560$	$74,358 \pm 36,806$	$86,379 \pm 4220$	26,960	72,172	134,700
DO (mg/L)	$9.50 \pm 1.88$	$8.03 \pm 1.27$	$7.46 \pm 1.05$	5.90	7.98	11.59
Turbidity (FNU)	$4.04 \pm 2.62$	$14.21 \pm 4.90$	$15.58 \pm 4.13$	1.00	12.97	19.83
Ammonia (ppm)	$1.79 \pm 1.48$	$0.40 \pm 0.06$	$0.18 \pm 0.08$	0.04	0.55	4.71
Nitrate (ppm)	$50.7 \pm 16.6$	$54.3 \pm 26.1$	$57.5 \pm 16.0$	30.6	55.5	106.0
Chloride (ppm)	$12,642 \pm 5728$	$33,788 \pm 14,721$	$36,043 \pm 3731$	8320	30,846	55,200
COD (mg/L)	$122 \pm 72$	$1297 \pm 988$	$1523 \pm 690$	88	1195	2924

As mentioned previously, guiding standards for hypersaline wetlands are not available. In order to have an understanding of the expected regional water characteristics, the marine water quality guiding standards published by the Ministry of Climate Change and Environment (MOCCA) and typical concentrations found in similar hypersaline environments were used for comparison purposes [49]. The results of this comparison show that the temperature, DO, pH, and turbidity are within the acceptable levels. The average values for the majority of the parameters in the three clusters show lower and sometimes

higher levels of concentrations than the standard levels shown in Table 1. The average values for ORP in this study ranged between 81 and 41 mv, yet no specific standard values are available for comparison purposes. The average values for EC levels in the three clusters were greater than 70,000  $\mu\text{S}/\text{cm}$ , agreeing with the standard level of higher than 50,000  $\mu\text{S}/\text{cm}$ . Moreover, the COD average levels appeared to be higher than the standard levels of less than 40 mg/L in all clusters. However, the upper pond showed much lower COD levels than the samples from the other two clusters. Chloride is another parameter that is interesting for this type of hypersaline ecosystem. The results in Table 4 show that the average chloride concentration was between 37,000 mg/L and 12,000 mg/L in the three clusters, which is consistent with the previously reported values of typical hypersaline environments of approximately 26,000 mg/L. The average levels of ammonia were between 1.7 mg/L and 0.1 mg/L, which were higher than the standard level ( $>0.06$  mg/L). Finally, the average levels of nitrates were between 50 mg/L and 58 mg/L and were slightly higher than the standard level ( $<50$  mg/L).

In general, the upper pond appeared to have lower temperature, ORP, EC, turbidity, nitrate, chloride, and COD values when compared with the middle and big ponds. The big pond had higher ORP, EC, turbidity, nitrate, chloride, and COD values. Despite having higher pH, DO, and ammonia values than the other two ponds, the upper pond appeared to perform better, with major reductions in EC, turbidity, chloride, and COD. Table 5 depicts a heat map of the differences between the three ponds for clarity. The statistical significance of the differences for each variable is investigated further in the following section by running multiple nonparametric ANOVA tests and pairwise comparisons among the three levels in the SAS software using the proc glm procedure.

**Table 5.** Heat map for average values of water quality parameters in each cluster.

		Clusters		
		Upper Ponds	Middle Ponds	Big Pond
<b>Parameters</b>	Temperature	26.75	30.01	27.44
	pH	8.45	8.19	8.16
	ORP	41.12	50.56	80.34
	EC	27,606	7436	86,379
	DO	9.50	8.03	7.46
	Turbidity	4.04	14.21	15.58
	Ammonia	1.79	0.40	0.18
	Nitrate	50.69	54.26	57.46
	Chloride	12,642	33,788	36,043
	COD	123	1297	1523

Note: “Green”: high; “Yellow”: medium; “Red”: low.

#### 4.4. Univariate Statistical Tests

For each of the ten water quality parameters, a one-way ANOVA test was used to investigate the differences between the three ponds (upper, middle, and big). This method is useful for determining whether each of the ten parameters varies between the three ponds. The parametric ANOVA test assumes normality and variance homogeneity. These assumptions were tested, and Levene’s test showed that the homogeneity assumption between the three groups was violated. As a result, the Kruskal–Wallis test, a nonparametric analogue to the parametric one-way ANOVA, was used to test the following hypotheses:

$H_0$  : There are no differences among the three ponds.

$H_a$  : There is at least one difference between the three ponds.

Since the Kruskal–Wallis test was used for each of the water quality variables, a Bonferroni  $p$ -value adjustment was used in order to control type I error. According to Table

6, the adjusted  $p$ -values were significant for all parameters except for nitrate and dissolved oxygen.

**Table 6.** Kruskal–Wallis  $p$ -values for each parameter.

Parameter	$p$ -Value	Adjusted $p$ -Value
Temperature	<0.0001	<0.0009
pH	<0.0001	<0.0009
ORP	<0.0001	<0.0009
EC	<0.0001	<0.0009
DO	0.008	0.0720
Turbidity	<0.0001	<0.0009
Ammonia	<0.0001	<0.0009
Nitrate	0.1360	1.0000
Chloride	<0.0001	<0.0009
COD	<0.0001	<0.0009

The source of the difference between the three ponds was also investigated. As a result, pairwise comparisons were performed using the nonparametric Wilcoxon test, and the results are shown in Table 7. For each combination, Table 7 displays the mean difference, the Bonferroni adjusted  $p$ -value, and the simultaneous 95% confidence interval. The table shows that the temperature and ORP levels in the big and middle ponds differed. The temperature and ORP levels appear to be lower in the big pond. The pH, ORP, EC, turbidity, ammonia, chloride, and COD levels differed significantly between the big and upper ponds. The big pond appeared to have higher ORP, EC, turbidity, chloride, and COD levels and lower pH and ammonia levels. Finally, the temperature, pH, EC, turbidity, ammonia, chloride, and COD levels differed significantly between the middle and upper ponds. The temperature, EC, turbidity, chloride, and COD levels were higher in the middle pond, while the pH and ammonia levels were lower.

**Table 7.** Pairwise comparisons between upper, middle, and big ponds.

Parameter	Class Comparisons		Difference between Least-Squares Means $LSMean(i) - LSMean(j)$	Simultaneous 95% Confidence Limits for Difference		Adjusted $p$ -Value	Significance
	i	j		Lower Limit	Upper Limit		
Temperature	Big	Middle	−2.57	−3.65	−1.50	<0.0001	Yes
	Big	Upper	0.69	−0.34	1.72	0.3050	No
	Middle	Upper	3.27	1.96	4.57	<0.0001	Yes
pH	Big	Middle	−0.029	−0.14	0.087	1.0000	No
	Big	Upper	−0.29	−0.40	−0.18	<0.0001	Yes
	Middle	Upper	−0.26	−0.40	−0.12	0.0001	Yes
ORP	Big	Middle	29.78	14.83	44.72	<0.0001	Yes
	Big	Upper	39.22	24.93	53.51	<0.0001	Yes
	Middle	Upper	9.44	−8.60	27.48	0.5958	No
EC	Big	Middle	12,021	−3630	2767	0.1866	No
	Big	Upper	58,774	43,808	73,740	<0.0001	Yes
	Middle	Upper	46,752	27,859	65,646	<0.0001	Yes
Turbidity	Big	Middle	1.37	−2.68	5.43	1.000	No
	Big	Upper	11.54	7.66	15.42	<0.0001	Yes
	Middle	Upper	10.17	5.27	15.07	<0.0001	Yes

<b>Ammonia</b>	Big	Middle	−0.23	−0.88	0.43	1.000	No
	Big	Upper	−1.61	−2.24	−0.98	<0.0001	Yes
	Middle	Upper	−1.38	−2.18	−0.59	0.0003	Yes
<b>Chloride</b>	Big	Middle	2255	−5006	9517	1.000	No
	Big	Upper	23,401	16,457	30,344	<0.0001	Yes
	Middle	Upper	21,145	12,379	29,911	<0.0001	Yes
<b>COD</b>	Big	Middle	226	−462	914	1.0000	No
	Big	Upper	1399	741	2058	<0.0001	Yes
	Middle	Upper	1173	342	2005	0.0032	Yes

Note: The difference is significant if adjusted *p*-value < 0.05.

## 5. Discussion

In this study, ten parameters were investigated using 44 samples collected from 15 sites in the Al Wasit Nature Reserve. The cluster and discriminant analysis results indicate that water samples can be collected on a regular basis from one station in each cluster for a rapid assessment of the Al Wasit Nature Reserve because each site in the cluster represents the entire cluster. As a result, taking water samples from three sampling sites rather than fifteen may accurately reflect the spatial dimension of the water quality throughout the wetland and reduce the monitoring time, effort, and cost without significant loss. This finding is consistent with the findings of a previous study conducted by Mohammadpour et al. [49], who used a spatial pattern analysis to assess the water quality in free surface lakes.

Previous studies have suggested that, due to the dynamic nature of wetland ecosystems, efforts to monitor and manage the water quality can be severely challenged [58]. For this reason, studies that assess the physical and chemical characterization of a wetland provide valuable inputs that contribute to the development of management programs [59].

The results of this study reflect on the importance of monitoring temperature as one of the most important parameters for assessing water quality and ecosystems because it influences many chemical and biological processes in marine ecosystems [55]. The water temperature ranged from 24.61 °C to 30.81 °C, with a mean value of 27.76 °C, which fell within the Ministry of Climate Change and Environment's (MOCCAE) standard values for marine water properties, suggesting that there is no thermal pollution in the wetland; however, the temperature in the middle pond was significantly higher than in the upper and big ponds. In addition, measurements of pH are a routine parameter, and in this study the pH ranged from 8.00 to 8.60, with no significant difference between the middle and big ponds (*p*-value > 0.05). The upper pond, however, had a significantly different pH than the middle and big ponds, with the highest average pH value of 8.45. Overall, the average pH values in the Al Wasit Wetland were within the standard ranges given in Table 1, i.e., between 6.0 and 9.0, indicating no serious threats from wastewater, minerals, or acid rain affecting the pH [56].

The understanding of the significance of these results helps guide potential future projects aiming at monitoring parameters over a long period of time to understand possible changes or degradation, which were previously used in other studies to associate water quality degradation to the trophic status of the ecosystem (Dar et al., 2021). In addition, parameters such as surface water EC values vary depending on geological structure and precipitation and can be used to categorize or distinguish wetlands [57]. When EC values exceed 3000 S/cm, the sample is classified as saline [58]. The Al Wasit Wetland's EC values ranged from 26,960 S/cm to 134,700 S/cm, with an average value of 72,172 S/cm, which falls within the hypersaline range. Furthermore, multiple comparisons revealed that there was no significant difference in the EC values between the big and middle ponds, while the upper pond EC values were significantly lower than the other two ponds. The Pearson

correlation analysis revealed strong positive correlations between EC and both Cl and COD ( $r = 0.860$  and  $0.805$ , respectively,  $p$ -value  $< 0.001$ ).

Furthermore, parameters such as the ORP showed clear differences between the sites in the study. There was a significant difference between the big pond and the other two ponds, as shown in Table 6, with the big pond having a higher ORP value. This could be because the ORP value decreases in the sediment. Because the big pond is deeper than the other two ponds, the samples from the upper and middle ponds are closer to the bottom sediment, whereas the samples from the big pond are further away. The ORP and pH values were found to have a moderate negative correlation. The latter result is consistent with the findings of Ustaolu et al. [54], who assessed the water quality of the Pazarsuyu Stream in Turkey.

The concentration of dissolved oxygen indicates how healthy the aquatic ecosystem is. Fish and other aquatic animals may perish if dissolved oxygen levels are too low. DO levels in the Al Wasit Wetland ranged from 5.90 mg/L to 11.59 mg/L, with a mean value of 7.98 mg/L. These results are within the norm, and the mean values for all three ponds were greater than 5 mg/L, indicating a good level of DO, with no significant differences between the three ponds. A moderate negative correlation between Cl and DO was found ( $r = -0.529$ ,  $p$ -value  $< 0.05$ ). Overall, the DO values in the Al Wasit Wetland were not lower than the reported standard values.

Turbidity is a measure of water clarity. It describes the amount of light scattered or blocked by water particles. These particles give the water a cloudy or turbid appearance. The measured turbidity values ranged from 1.00 FNU to 19.83 FNU, with an average value of 12.97 FNU, which is within the standard turbidity range (75 FNU). The Kruskal–Wallis test and pairwise comparisons showed a significant difference in the turbidity values between the upper pond and the other two ponds, with the upper ponds performing better, with lower turbidity values of 4.04 FNU. This is an indication of a healthy aquatic ecosystem in the Al Wasit Wetland, as high turbidity can harm fish and other aquatic life. Algae and other aquatic plants require light to grow, and high turbidity reduces the amount of light available underwater.

Ammonia concentration management can improve plant growth and system function [59]. Ammonia toxicity varies with pH and water temperature. The average  $\text{NH}_3$  concentration in the Al Wasit Wetland was 0.55, which is higher than the standard value of 0.06 mg/L. The nonparametric ANOVA test revealed significant differences between the three ponds, with the upper pond exhibiting the highest  $\text{NH}_3$  levels. The correlation analysis revealed moderate negative relationship between the  $\text{NH}_3$  levels and the turb, Cl, EC, and COD levels. On the other hand, a moderate positive correlations were found between  $\text{NH}_3$  and both DO and pH.

Nitrogen is an essential nutrient for plant development. High concentrations of certain forms of nitrogen, such as nitrate, can be toxic to aquatic organisms. The  $\text{NO}_3$  levels in the Al Wasit Wetland ranged from 30.60 mg/L to 106.0 mg/L, with a mean value of 55.49 mg/L. This means that the  $\text{NO}_3$  levels were significantly higher than the standard (50 mg/L). An ANOVA test revealed no significant differences in the  $\text{NO}_3$  levels among the three ponds. A Pearson correlation analysis revealed moderate positive correlations between the  $\text{NO}_3$  levels and pH as well as the EC, Cl, and COD levels.

Previous research, such as [53], showed that chlorides can accumulate in wetlands from year to year and that seasonal increases in chloride concentrations in wetlands can affect the reproduction of some species. Hypersaline wetlands, on the other hand, are known for their high salinity levels, so chloride levels are expected to be high. In this study, the Cl values ranged from 8320 mg/L to 55,200 mg/L, with an average of 30,846 mg/L. The measured values were consistent with what has previously been reported in similar environments in the UAE, which is an average of 26,000 mg/L. An ANOVA test and multiple comparisons revealed that the Cl level in the upper pond differed significantly from the other two ponds, where lower Cl values performed better. According to the correlation analysis, Cl levels had moderate positive correlations with temperature,



ORP, turb, and  $\text{NO}_3$ . However, moderate negative correlations were found between the Cl content and pH, DO, and  $\text{NH}_3$ .

The COD levels in the Al Wasit Wetland ranged from 88 mg/L to 2924 mg/L, with an average of 1195 mg/L. The COD values appeared to be much higher than the standard values (40 mg/L). An ANOVA test and pairwise comparisons revealed that the upper pond had significantly higher COD levels than the middle and big ponds, which had much lower average values. The Pearson correlation coefficient revealed that the COD level had a strong positive correlation with the EC and moderate positive correlations with ORP, turb,  $\text{NO}_3$ , and Cl. Finally, moderate negative correlations were discovered between COD, pH, and  $\text{NH}_3$ .

In general, the results of this study clearly imply that samples taken from sites in close locations may have similar water characteristics. In addition, according to the tested samples, all the sites in the big pond, including sites that are located on the shore or in the middle of the pond, appear to have similar water quality characteristics.

Some of the limitations encountered in this study included the hypersaline nature of the wetland and the lack of previous studies within the region comparing similar environments. As an initial study, this work provides a baseline on the possibilities of measuring water quality parameters, which could be used for site selection and comparisons. In the future, studies should be conducted to include a larger variety of chemical and physical parameters, such as heavy metals, bacteria, and others, in addition to the collection of sediments and other biological matrices to complement the study. In terms of data collection, access to the site and the number of measurements collected were also limiting factors, as the measurements were taken on site and taken to the laboratory for further analysis. Furthermore, if a larger dataset was available, the data could be used to predict spatial distribution patterns and pollution quality indexes, as suggested by Bera et al., 2022 [60]. This study, also contributes to knowledge that is scarce in this region and highlights the importance of introducing tools such as remote sensing for regional water quality monitoring and assessment [61,62]. In addition, understanding the water quality parameters of incoming effluents will facilitate regulating and reducing the negative impacts on natural waters and their organisms. Including additional factors not reported in this study, such as inorganic suspended solids (ISS), total suspended solids (TSS), organic matter (OM), biochemical oxygen demand (BOD), and total phosphorus (TP), can increase the understanding of a wetland's status and suggest treatment methods for the wetland [58,60–63].

## 6. Conclusions

Several statistical techniques were used to analyze water quality data from the Al Wasit Nature Reserve in the United Arab Emirates in this study. Using a cluster analysis, fifteen water quality monitoring sites were divided into three groups (the upper, middle, and big ponds) with similar water quality characteristics. To validate the cluster analysis results, a discriminant analysis was used. To investigate the differences between the three ponds, an ANOVA was used. The three ponds were found to differ significantly in eight of the evaluated parameters, with only the nitrate and dissolved oxygen parameters being insignificant. Following that, pairwise comparisons revealed the sources of the differences, with the upper pond (Cluster 1) outperforming the middle pond (Cluster 2) and the big pond (Cluster 3) for the majority of the parameters.

Based on the findings above, the statistical analysis approaches presented here formulate a comprehensive framework that is useful for professionals involved in the design and implementation of water quality monitoring networks and the interpretation of large water quality datasets. This approach provides a multivariate statistical basis for classifying sites by similar water quality characteristics. It also builds classification models that could be used in the future with large datasets to predict the locations of new unknown samples. In addition, larger datasets could be collected, and discriminant analyses could

be further used to identify the most responsible water quality parameters for spatial variation in water quality and to identify opportunities to reduce the number of water quality parameters and sampling sites to those that are most representative for long-term monitoring. This will assist water quality monitoring agencies in refining current monitoring programs by reducing the number of water quality variables monitored to those that are most influential and limiting the number of sampling sites to those that are most representative of spatial or temporal patterns, which will significantly reduce the time, effort, and cost of assessing water quality.

This study establishes guidelines for sampling in the Al Wasit Wetland, such as sampling only from ponds with significant differences in parameter values. The study found no statistical differences between the middle pond, which is mostly located near the shore, and the big pond, which includes deeper sites that require the use of specialized tools, equipment, and boats for sampling. As a result, samples from the middle pond are also considered representative of the big pond for future work, potentially saving costs. It is also suggested that more data should be collected in the future in order to create a high-accuracy predictive model. Such predictive models are useful for predicting how parameter values will change as a result of changes in spatial or temporal patterns. The same framework could be used to assess water quality in other areas.

**Author Contributions:** Conceptualization, A.M., F.S., S.L.K. and A.A.; methodology, A.M., F.S. and S.L.K.; software, A.M. and A.A.; validation, A.M., F.S., S.L.K. and A.A.; formal analysis, A.M., F.S. and S.L.K.; investigation, A.M., F.S., S.L.K. and A.A.; resources, F.S., S.L.K. and A.A.; data curation, A.M. and A.A.; writing—original draft preparation, A.M.; writing—review and editing, F.S., S.L.K. and A.A.; supervision, F.S. and A.A.; project administration, F.S. and A.A.; funding acquisition, F.S. and A.A. All authors have read and agreed to the published version of the manuscript.

**Funding:** This research was funded by the American University of Sharjah (AUS) Undergraduate Research Grant URG21-033 and Faculty Research Grant FRG19-L-S51 and the publication open access was funded by the Open Access Program from the American University of Sharjah.

**Institutional Review Board Statement:** Not Applicable.

**Informed Consent Statement:** Not Applicable.

**Acknowledgements:** Our most sincere appreciation to the Sharjah Environment and Protected Areas Authority (EPAA), especially Fadi Yaghmour, Brendan Jones, and Sara Al Abdalla, for their great support in providing site access and scientific support. We recognize the contribution of Tala Abdulateef for her time and efforts in collecting and analyzing the samples. Our deepest appreciation to the University of Sharjah 2nd Forum for Women in Research (QUWA): Empowering Women in Research and Innovation for also partially supporting this work. This paper represents the opinions of the author(s) and does not mean to represent the position or opinions of the American University of Sharjah. The authors would like to express sincere thanks to the editors and the anonymous reviewers for their constructive comments and suggestions that have greatly enhanced the paper.

**Conflicts of Interest:** The authors declare no conflict of interest.

## References

1. About the Convention on Wetlands. Available online: <https://www.ramsar.org/about-the-convention-on-wetlands-0> (accessed on 4 April 2022).
2. Wetlands and Agriculture: Private Interests and Public Benefit. Economic Research Service. Available online: <https://www.ers.usda.gov/webdocs/publications/40845> (accessed on 4 April 2022).
3. Barot, C.; Patel, V. Comparative Study of Seasonal Variation in Physicochemical Properties of Selected Wetlands of Mehsana Districts, North Gujarat. *Indian J. Appl. Res.* **2021**, *4*, 44–47. <https://doi.org/10.15373/2249555X/July2014/12>.
4. Wilcox, D.; Nichols, S. The effects of water-level fluctuations on vegetation in a Lake Huron wetland. *Wetlands* **2008**, *28*, 487–501. <https://doi.org/10.1672/07-129.1>.
5. Dorche, E.E.; Fathi, P.; Ofogh, A.E. Wetland water quality assessment in cold and dry regions (Case study: Choghakhor wetland, Iran). *Limnol. Rev.* **2019**, *19*, 57–75. <https://doi.org/10.2478/limre-2019-0006>.
6. Davidson, N.C.; Fluet-Chouinard, E.; Finlayson, C.M. Global extent and distribution of wetlands: trends and issues. *Mar. Freshw. Res.* **2018**, *69*, 620–627.

7. Jaramillo, F.; Desormeaux, A.; Hedlund, J.; Jawitz, J.W.; Clerici, N.; Piemontese, L.; Rodríguez-Rodríguez, J.A.; Anaya, J.A.; Blanco-Libreros, J.F.; Borja, S.; et al. Priorities and interactions of sustainable development goals (SDGs) with focus on wetlands. *Water* **2019**, *11*, 619.
8. Evers, S.; Yule, C.M.; Padfield, R.; O'Reilly, P.; Varkkey, H. Keep wetlands wet: the myth of sustainable development of tropical peatlands—implications for policies and management. *Glob. Change Biol.* **2017**, *23*, 534–549.
9. Darrah, S.E.; Shennan-Farpon, Y.; Loh, J.; Davidson, N.C.; Finlayson, C.N.; Gardner, R.C.; Walpole, M.J. Improvements to the Wetland Extent Trends (WET) index as a tool for monitoring natural and human-made wetlands. *Ecol. Indic.* **2019**, *99*, 294–298. <https://doi.org/10.1016/j.ecolind.2018.12.032>.
10. Convention, R. Global Wetland Outlook. Available online: [https://static1.squarespace.com/static/5b256c78e17ba335ea89fe1f/t/61b8a904f3ceb458e9b5ca44/1639491853578/Ramsar+GWO\\_Special+Edition+2021%E2%80%9393ENGLISH\\_WEB.pdf](https://static1.squarespace.com/static/5b256c78e17ba335ea89fe1f/t/61b8a904f3ceb458e9b5ca44/1639491853578/Ramsar+GWO_Special+Edition+2021%E2%80%9393ENGLISH_WEB.pdf) (accessed on 4 April 2022).
11. United Arab Emirates Ministry of Climate Change & Environment. Biodiversity. Available online: <https://www.moccae.gov.ae/en/knowledge-and-statistics/biodiversity.aspx> (accessed on 27 March 2022).
12. United Arab Emirates. Ministry of environment & Water. National Biodiversity Strategy. Available online: <https://www.moccae.gov.ae/assets/download/d962a50/National%20Biodiversity%20Strategy%202014-2021.pdf.aspx?view=true> (accessed on 2 April 2022).
13. UAE. Ministry of Climate Change & Environment. UAE National Red List of Birds. Available online: <https://www.moccae.gov.ae/assets/download/1ac96bd6/UAE%20National%20Red%20List%20Birds%20Policy%20Brief.pdf.aspx?view=true> (accessed on 27 March 2022).
14. Authority. Wasit Nature Reserve. Available online: <https://epaashj.ae/protected-areas/wasit-nature-reserve/> (accessed on 27 March 2022).
15. Samara, F.; Ali, T.; Twyford, J.; Knuteson, S. Investigation of Fecal Contamination of Groundwater and Surface Water at Al Wasit Nature Reserve, Sharjah, United Arab Emirates *Asian J. Microbiol. Biotechnol. Environ. Sci.* **2016**, *18*, 35–45.
16. Fathi, P.; Dorcheh, E.E.; Mirghaffari, N.; Esmaeili, A.R. Water quality assessment in Choghakhor Wetland using water quality index (WQI). *Iran. J. Fish. Sci.* **2007**, *15*, 508–523.
17. Shrestha, S.; Kazama, F. Assessment of surface water quality using multivariate statistical techniques: A case study of the Fuji river basin, Japan. *Environ. Model. Softw.* **2022**, *22*, 464–475. <https://doi.org/10.1016/j.envsoft.2006.02.001>.
18. Boyacioglu, H.; Boyacioglu, H. Water pollution sources assessment by multivariate statistical methods in the Tahtali Basin, Turkey. *Environ. Geol.* **2008**, *54*, 275–282. <https://doi.org/10.1007/s00254-007-0815-6>.
19. Chen, P.-Y.; Lee, P.-F.; Ko, J.C.-J.; Ko, C.-H.; Chou, T.-C.; Teng, C.-J. Associations Between Water Quality Parameters and Planktonic Communities in Three Constructed Wetlands, Taipei. *Wetlands* **2011**, *31*, 1–8. <https://doi.org/10.1007/s13157-011-0236-x>.
20. Apollaro, C.; Curzio, D.D.; Fuoco, I.; Bucciante, A.; Dinelli, E.; Vespasiano, G.; Castrignanò, A.; Rusi, S.; Barca, D.; Figoli, A.; et al. A multivariate non-parametric approach for estimating probability of exceeding the local natural background level of arsenic in the aquifers of Calabria region (Southern Italy). *Sci. Total Environ.* **2022**, *806*, 150345. <https://doi.org/10.1016/j.scitotenv.2021.150345>.
21. Fuoco, I.; de Rosa, R.; Barca, D.; Figoli, A.; Gabriele, B.; Apollaro, C. Arsenic polluted waters: Application of geochemical modelling as a tool to understand the release and fate of the pollutant in crystalline aquifers. *J. Environ. Manag.* **2022**, *301*, 113796. <https://doi.org/10.1016/j.jenvman.2021.113796>.
22. Brix, H. Do macrophytes play a role in constructed treatment wetlands? *Water Sci. Technol.* **1997**, *35*, 11–17. <https://doi.org/10.2166/wst.1997.0154>.
23. Johari, N.; Chang, C.K.; Ghani, A.A.; Abwahid, M.; Abdul-Talib, S. Performance of Constructed Wetland on Stormwater Quality Control. In Proceedings of the 2016 APD IAHR Congress, Colombo, Sri Lanka, 29–30 August 2016.
24. Gibbons, J.W.; Scott, D.E.; Ryan, T.J.; Buhlmann, K.A.; Tuberville, T.D.; Metts, B.S.; Greene, J.L.; Mills, T.; Leiden, Y.; Poppy, S.; et al. The global decline of reptiles, Déjà Vu Amphibians: reptile species are declining on a global scale. Six significant threats to reptile populations are habitat loss and degradation, introduced invasive species, environmental pollution, disease, unsustainable use, and global climate change. *Bioscience* **2000**, *50*, 653–666.
25. Jenkins, D.G.; Grissom, S.; Miller, K. Consequences of prairie wetland drainage for crustacean biodiversity and metapopulations. *Conserv. Biol.* **2003**, *17*, 158–167. <https://doi.org/10.1046/j.1523-1739.2003.01450.x>.
26. Zedler, J.; Kercher, S. Wetland Resources: Status, Trends, Ecosystem Services, and Restorability. *Annu. Rev. Environ. Resour.* **2005**, *15*, 39–74. <https://doi.org/10.1146/annurev.energy.30.050504.144248>.
27. United Nations. SDG Goals. Available online: <https://www.un.org/site-search/?query=SDG+GOALS> (accessed on 4 April 2022).
28. Juffe-Bignoli, D.; Harrison, I.; Butchart, S.H.M.; Flitcroft, R.; Hermoso, V.; Jonas, H.; Lukasiewicz, A.; Thieme, M.; Turak, E.; Bingham, H.; et al. Achieving Aichi Biodiversity Target 11 to improve the performance of protected areas and conserve freshwater biodiversity: Elements needed to meet a global target for protected areas. *Aquat. Conserv. Mar. Freshw. Ecosyst.* **2016**, *26*, 133–151. <https://doi.org/10.1002/aqc.2638>.
29. UNEP/CBD. Conference of The Parties to The Convention on Biological Diversity. Available online: <https://www.cbd.int/doc/decisions/cop-10/cop-10-dec-02-en.pdf> (accessed on 4 April 2022).

30. United Nations. UN Convention to Combat Desertification. Available online: [https://www.unwomen.org/en/how-we-work/intergovernmental-support/climate-change-and-the-environment/united-nations-convention-to-combat-desertification#:~:text=The%20United%20Nations%20Convention%20to,development%20to%20sustainable%20land%20management.\(accessed on 4 April 2022\).](https://www.unwomen.org/en/how-we-work/intergovernmental-support/climate-change-and-the-environment/united-nations-convention-to-combat-desertification#:~:text=The%20United%20Nations%20Convention%20to,development%20to%20sustainable%20land%20management.(accessed on 4 April 2022).)
31. United Nations. Paris Agreement. Available online: <https://www.un.org/en/climatechange/paris-agreement> (accessed on 4 April 2022).
32. Collen, B.; Whitton, F.; Dyer, E.; Baillie, J.E.M.; Cumberlidge, N.; Darwall, W.; Pollock, C.; Dewhurst-Richman, N.; Soulsby, A.-M.; Böhm, M.; et al. Global patterns of freshwater species diversity, threat and endemism *Glob. Ecol. Biogeogr. A J. Macroecology* **2014**, *23*, 40–51. <https://doi.org/10.1111/geb.12096>. (In English)
33. Horwitz, P.; Finlayson, C.M.; Weinstein, P. Healthy Wetlands, Healthy People A Review of Wetlands and Human Health Interactions; 2012. Ramsar Technical Report No. 6/World Health Organization Report.
34. Russi, D.; Brink, P.T.; Farmer, A.; Badura, T.; Coates, D.; Forster, J.; Kumar, R.; Davidson, N. *The Economics of Ecosystems and Biodiversity for Water and Wetlands*; IUCN: Gland, Switzerland, 2013.
35. Sato, T.; Qadir, M.; Yamamoto, S.; Endo, T.; Zahoor, A. Global, regional, and country level need for data on wastewater generation, treatment, and use. *Agric. Water Manag.* **2013**, *130*, 1–13. <https://doi.org/10.1016/j.agwat.2013.08.007>.
36. United Nations. UN World Water Development Report 2012. Available online: <https://www.unwater.org/publications/managing-water-uncertainty-risk/> (accessed on 5 April 2022).
37. United Nations. UN World Water Development Report 2017. Available online: <https://www.unwater.org/publications/world-water-development-report-2017/> (accessed on 5 April 2022).
38. Jones, J.I.; Murphy, J.F.; Collins, A.L.; Sear, D.A.; Naden, P.S.; Armitage, P.D. The Impact of Fine Sediment on Macro-Invertebrates. *River Res. Appl.* **2022**, *28*, 1055–1071/04/04 2012. <https://doi.org/10.1002/rra.1516>.
39. Kemp, P.; Sear, D.; Collins, A.; Naden, P.; Jones, I. The Impacts of fine sediment on riverine fish. *Hydrol. Process.* **2022**, *25*, 1800–1821. <https://doi.org/10.1002/hyp.7940>.
40. UN environment programme. The Snapshot Report of the World's Water Quality. Available online: <https://www.unep.org/resources/publication/snapshot-report-worlds-water-quality> (accessed on 5 April 2022).
41. Development. OECD Environmental Outlook to 2050: The Consequences of Inaction-Key Facts and Figures. Available online: <https://www.oecd.org/env/indicators-modelling-outlooks/oecdenvironmentaloutlookto2050theconsequencesofinaction-keyfactsandfigures.htm> (accessed on 5 April 2022).
42. OECD. Drying Wells, Rising Stakes. Available online: <https://www.oecd.org/publications/drying-wells-rising-stakes-9789264238701-en.htm> (accessed on 5 April 2022).
43. Bennett, S.J.; Barrett-Lennard, E.G.; Colmer, T.D. Salinity and waterlogging as constraints to saltland pasture production: a review. *Agric. Ecosyst. Environ.* **2009**, *129*, 349–360.
44. Saccò, M.; White, N.E.; Harrod, C.; Salazar, G.; Aguilar, P.; Cubillos, C.F.; Meredith, K.; Baxter, B.K.; Oren, A.; Anufrieva, E.; et al. Salt to conserve: a review on the ecology and preservation of hypersaline ecosystems. *Biol. Rev.* **2021**, *96*, 2828–2850. <https://doi.org/10.1111/brv.12780>.
45. Zadereev, E.; Lipka, O.; Karimov, B.; Krylenko, M.; Elias, V.; Pinto, I.S.; Alizade, V.; Anker, Y.; Feest, A.; Kuznetsova, D.; et al. Overview of past, current, and future ecosystem and biodiversity trends of inland saline lakes of Europe and Central Asia. *Inland Waters* **2020**, *10*, 438–452. <https://doi.org/10.1080/20442041.2020.1772034>.
46. Delaney, J.; Shiel, R.J.; Storey, A.W. Prioritising wetlands subject to secondary salinisation for ongoing management using aquatic invertebrate assemblages: a case study from the Wheatbelt Region of Western Australia. *Wetl. Ecol. Manag.* **2016**, *24*, 15–32. <https://doi.org/10.1007/s11273-015-9447-x>.
47. Chuang, I.; Yang, H.-H.; Lin, H.-J. Effects of a thermal discharge from a nuclear power plant on phytoplankton and periphyton in subtropical coastal waters. *J. Sea Res.* **2012**, *61*, 197–205. <https://doi.org/10.1016/j.seares.2009.01.001>.
48. Gazzaz, D.N. Characterization of Spatial Patterns in River Water Quality Using Chemometric Pattern Recognition Techniques. *Mar. Pollut. Bull.* **2012**, *64*, 688–698. <https://doi.org/10.1016/j.marpolbul.2012.01.032>.
49. Mohammadpour, R.; Shaharuddin, S.; Chang, C.K.; Zakaria, N.; Ghani, A.A. Spatial pattern analysis for water quality in free-surface constructed wetland. *Water Sci. Technol. A J. Int. Assoc. Water Pollut. Res.* **2014**, *70*, 1161–1167. <https://doi.org/10.2166/wst.2014.343>.
50. Service, R.S.I. Wasit Nature Reserve. Available online: <https://rsis.ramsar.org/ris/2386> (accessed on 2 April 2022).
51. ENH. Group. In Sharjah, score one for nature! Focus. Available online: <http://enhg.org/> (accessed on 02 April 2022).
52. MOCCAE. Guiding Standards for Marine Water Properties in the United Arab Emirates. Available online: [https://www.moccae.gov.ae/assets/download/d6b99426/brand\\_%D8%A7%D9%84%D9%85%D8%B9%D8%A7%D9%8A%D9%8A%D8%B1%20%D8%A7%D9%84%D8%A7%D8%B3%D8%AA%D8%B1%D8%B4%D8%A7%D8%AF%D9%8A%D8%A9%20%D9%84%D8%AE%D9%88%D8%A7%D8%B5%20%D8%A7%D9%84%D9%85%D9%8A%D8%A7%D9%87%20%D8%A7%D9%84%D8%A8%D8%AD%D8%B1%D9%8A%D8%A9\\_En\[2\].pdf.aspx#:~:text=The%20guiding%20standards%20list%20includes,nutrients%2C%20microbial%20bacteria%20and%20hydrocarbons.\(accessed on 31 August 2020\).](https://www.moccae.gov.ae/assets/download/d6b99426/brand_%D8%A7%D9%84%D9%85%D8%B9%D8%A7%D9%8A%D9%8A%D8%B1%20%D8%A7%D9%84%D8%A7%D8%B3%D8%AA%D8%B1%D8%B4%D8%A7%D8%AF%D9%8A%D8%A9%20%D9%84%D8%AE%D9%88%D8%A7%D8%B5%20%D8%A7%D9%84%D9%85%D9%8A%D8%A7%D9%87%20%D8%A7%D9%84%D8%A8%D8%AD%D8%B1%D9%8A%D8%A9_En[2].pdf.aspx#:~:text=The%20guiding%20standards%20list%20includes,nutrients%2C%20microbial%20bacteria%20and%20hydrocarbons.(accessed on 31 August 2020).)
53. Taher, M.M.; Mohamed, A.R.M.; Al-Ali, A.K.H. Some Ecological Characteristics and Ichthyofauna of Surrounding Sammaliah Island, Abu Dhabi, UAE. *Basrah J. Sci.* **2012**, *30*, 31–49.

54. Ustaoglu, F.; Tepe, Y. Water quality and sediment contamination assessment of Pazarsuyu Stream, Turkey using multivariate statistical methods and pollution indicators. *Int. Soil Water Conserv. Res.* **2019**, *7*, 47–56. <https://doi.org/10.1016/j.iswcr.2018.09.001>.
55. McKenna, J.E. An enhanced cluster analysis program with bootstrap significance testing for ecological community analysis. *Environ. Model. Softw.* **2003**, *18*, 205–220. [https://doi.org/10.1016/S1364-8152\(02\)00094-4](https://doi.org/10.1016/S1364-8152(02)00094-4).
56. Huberty, C.J.; Olejnik, S. *Applied Manova and Discriminant Analysis*; John Wiley & Sons: Hoboken, NJ, USA, 2006.
57. Lix, L.; Sajobi, T. Discriminant Analysis for Repeated Measures Data: A Review. *Front. Psychol.* **2010**, *1*, 146. <https://doi.org/10.3389/fpsyg.2010.00146>. (In English).
58. Dar, S.A.; Bhat, S.U.; Dar, S.A. Wetland Ecosystem Monitoring Through Water Quality Perspectives. In *Handbook of Research on Monitoring and Evaluating the Ecological Health of Wetland*; Rathoure, A.K., Ed.; IGI Global: Hershey, PA, USA, 2022; pp. 51–70.
59. Dar, S.A.; Rashid, I.; Bhat, S.U. Land system transformations govern the trophic status of an urban wetland ecosystem: Perspectives from remote sensing and water quality analysis. *Land Degrad. Dev.* **2021**, *32*, 4087–4104. <https://doi.org/10.1002/ldr.3924>.
60. Banerjee, T.; Kumar, V.; Sarkar, D.J.; Devi, M.; Behera, B.; Das, B. Pollution assessment and mapping of potentially toxic elements (PTE) distribution in urban wastewater fed natural wetland, Kolkata, India. *Environ. Sci. Pollut. Res.* **2022**, *29*, 67801–67820. <https://doi.org/10.1007/s11356-022-20573-8>.
61. Mabwoga, S.; Chawla, A.; Thukral, A. Assessment of Water Quality Parameters of the Harike Wetland in India, a Ramsar Site, Using IRS LISS IV Satellite Data. *Environ. Monit. Assess.* **2018**, *170*, 117–28. <https://doi.org/10.1007/s10661-009-1220-2>.
62. Hasab, H.; Jawad, H.; Dibs, H.; Hussain, H.; Hussain, M.; Al-Ansari, N. Evaluation of Water Quality Parameters in Marshes Zone Southern of Iraq Based on Remote Sensing and GIS Techniques. *Water Air Soil Pollut.* **2020**, 231–138. <https://doi.org/10.1007/s11270-020-04531-z>.
63. Tepe, Y.; Temel, F.A. Treatment of effluents from fish and shrimp aquaculture in constructed wetlands. In *Constructed Wetlands for Industrial Wastewater Treatment*; John Wiley & Sons Ltd.: Hoboken, NJ, USA; 2018 pp. 105–125. <https://doi.org/10.1002/9781119268376.ch5>.