

Figure S1. Solid loadings observed in the Riacho Fundo stream.

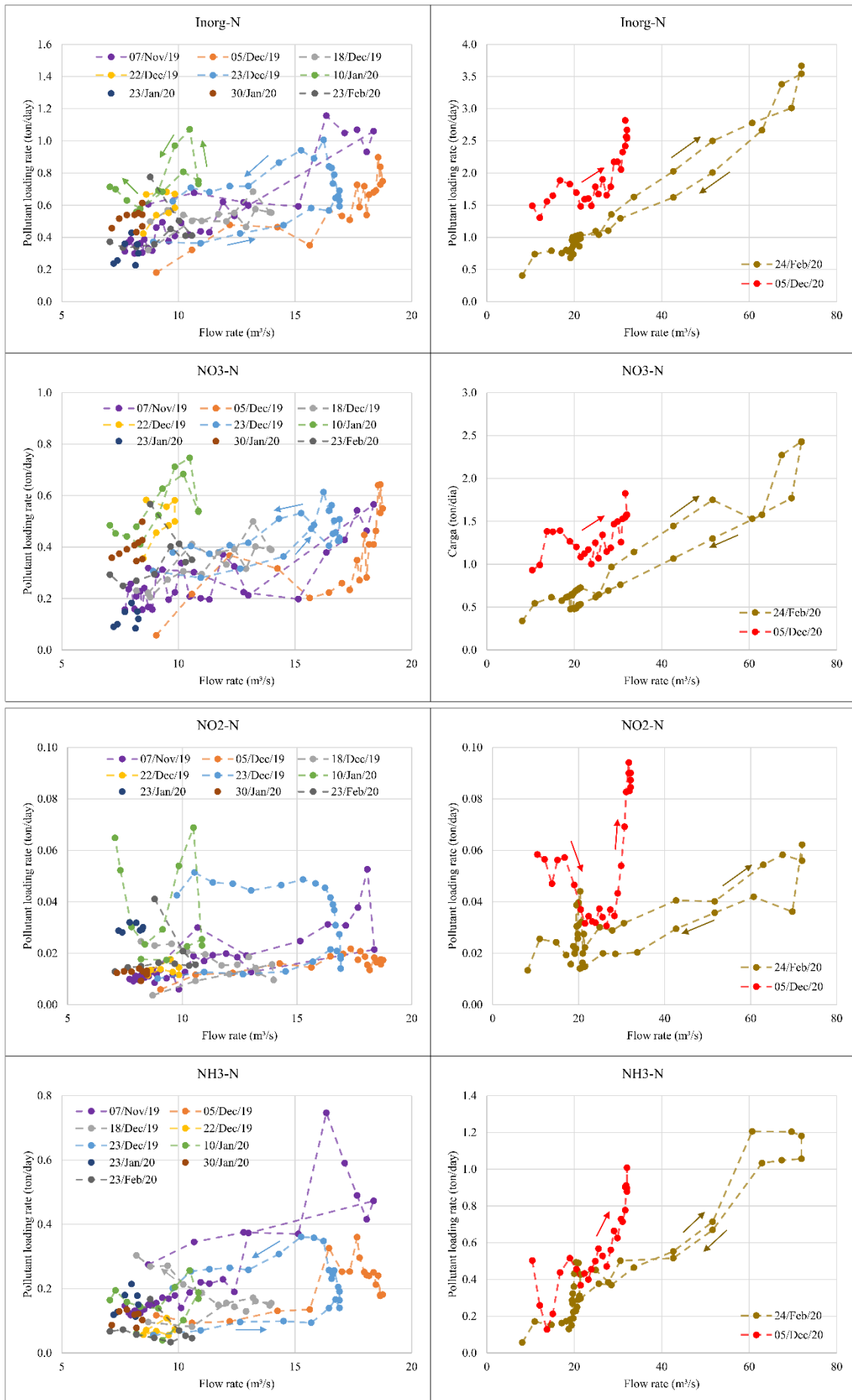


Figure S2. Nitrogen loadings observed in the Riacho Fundo stream.

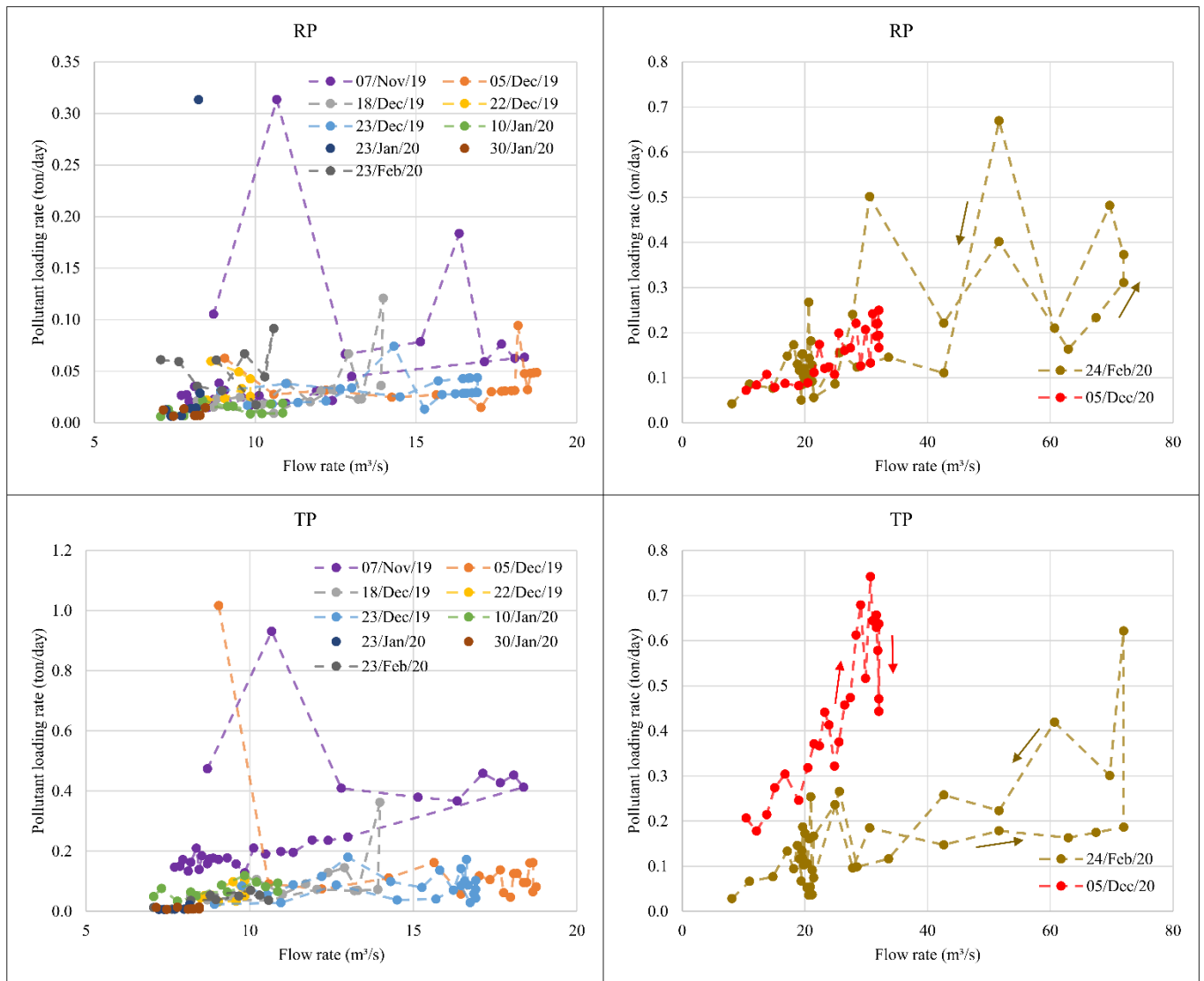


Figure S3. Phosphorus loadings observed in the Riacho Fundo stream.

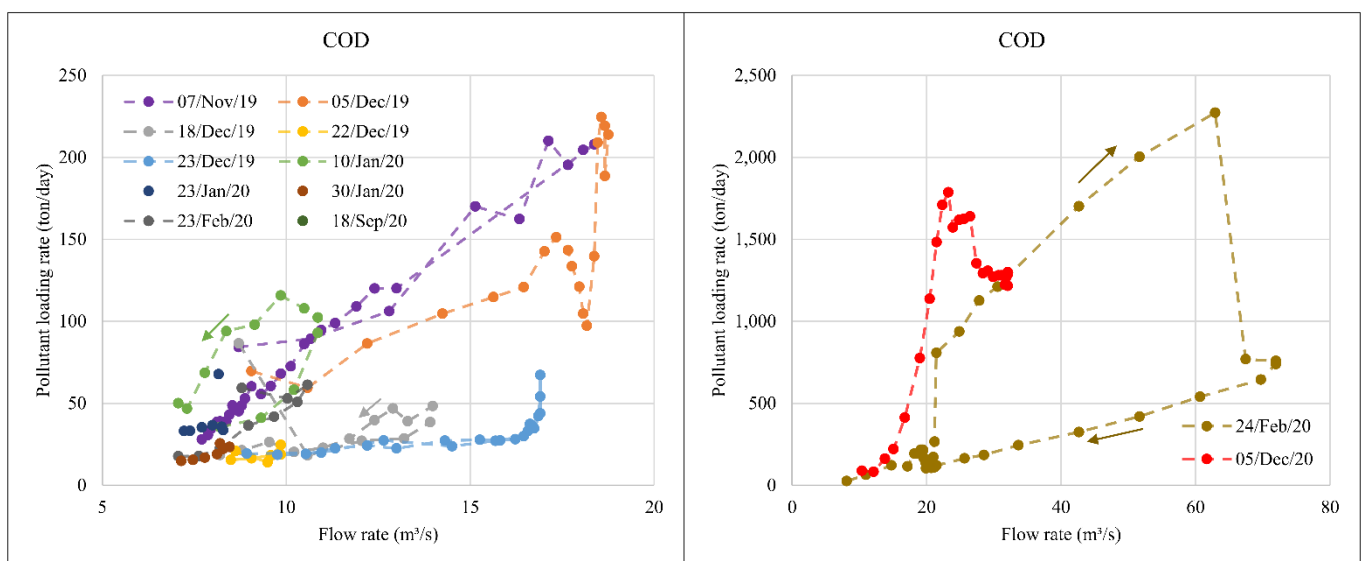


Figure S4. COD loadings observed in the Riacho Fundo stream.

Table S1. Correlation between rainfall and flood characteristics and event mean concentrations (EMCs) in the Riacho Fundo watershed.

		EMC									Flow rate		Flood	Mean rainfall			Mean
		COD	TS	TSS	NO ₂ -N	NO ₃ -N	NH ₃ -N	Inorg-N	React. P	Total P	Mean	Max	duration	Volume	Duration	Intensity	ADD
EMC	COD	1.00															
	TS	0.88	1.00														
	TSS	0.90	0.99	1.00													
	NO ₂ -N	0.03	-0.10	-0.05	1.00												
	NO ₃ -N	0.28	0.20	0.25	0.19	1.00											
	NH ₃ -N	0.57	0.45	0.51	0.31	-0.19	1.00										
	Inorg-N	0.47	0.35	0.42	0.35	0.93	0.17	1.00									
	Reactive P	0.40	0.18	0.17	0.11	-0.27	0.18	-0.20	1.00								
	Total P	0.52	0.50	0.52	-0.13	0.04	0.63	0.25	0.10	1.00							
Flow rate	Mean	0.71	0.68	0.69	-0.34	-0.03	0.37	0.07	0.38	0.35	1.00						
	Maximum	0.44	0.41	0.43	-0.40	-0.14	0.19	-0.10	0.38	0.15	0.93	1.00					
Flood duration		0.16	0.25	0.22	-0.35	-0.67	0.28	-0.59	0.23	0.12	0.53	0.58	1.00				
Mean* rainfall	Volume	0.43	0.43	0.43	-0.32	-0.40	0.46	-0.26	0.32	0.43	0.83	0.83	0.84	1.00			
	Duration	-0.06	-0.03	-0.07	-0.12	-0.73	0.08	-0.71	0.25	-0.29	0.21	0.30	0.86	0.53	1.00		
	Intensity	0.52	0.46	0.53	0.49	0.72	0.40	0.87	-0.20	0.45	0.17	-0.02	-0.36	-0.01	-0.53	1.00	
Mean* ADD		0.88	0.86	0.87	-0.02	0.36	0.41	0.49	0.29	0.45	0.45	0.15	-0.12	0.06	-0.29	0.43	1.00

* Among raingages.

Color legend:

1.00	strongest positive correlation
0.00	weakest correlation
-1.00	strongest negative correlation