

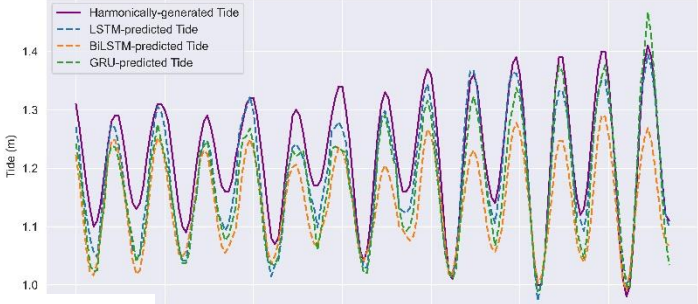
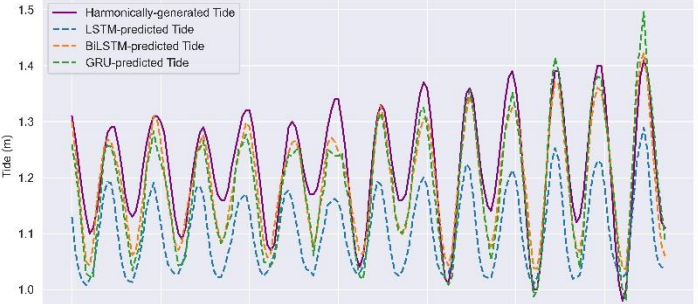
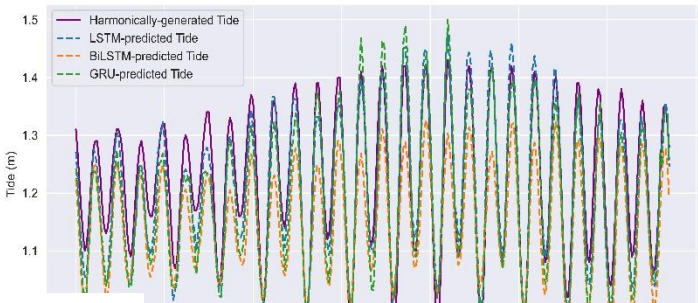
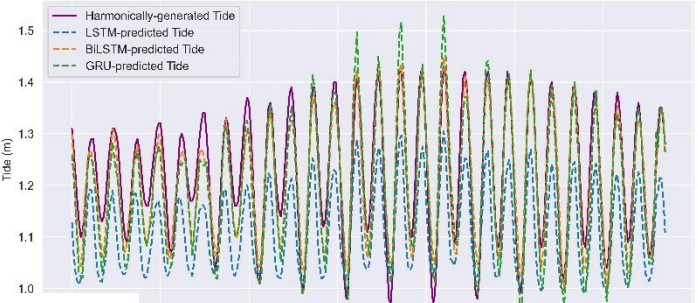
Supplementary Files

Table S1. Amplitudes of constituent obtained after harmonic analysis

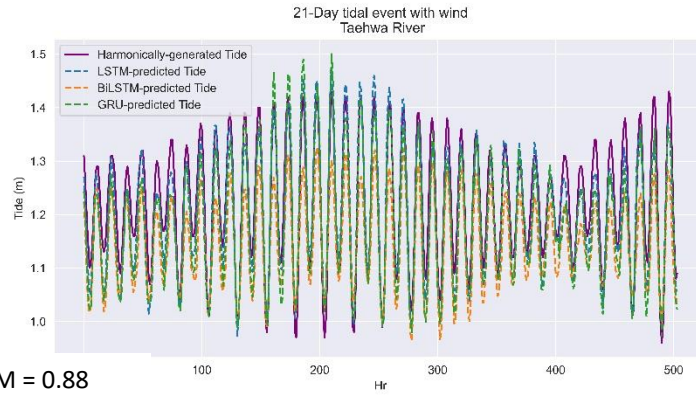
Constituents	Amplitude	Phase	Constituents	Amplitude	Phase	Constituents	Amplitude	Phase
M2*	0.1492	197.32	M3	0.0065	309.82	2Q1	0.0021	275.97
Sa	0.1237	142.2	2MK3	0.0051	82.95	rho1	0.002	313.59
S2*	0.0683	238.7	nu2	0.0048	186.80	M6	0.0016	16.05
K1*	0.0333	43.27	L2	0.0042	184.75	lambda2	0.0015	166.15
N2	0.0266	187.0	Mm	0.0041	41.64	S4	0.0011	93.30
O1*	0.0257	342.3	MS4	0.0041	6.38	OO1	0.0011	128.07
Ssa	0.0251	322.2	R2	0.0038	204.10	J1	0.0008	136.71
K2	0.018	233.4	2N2	0.0038	188.44	M1	0.0006	184.05
S1	0.0114	55.96	Mf	0.0035	211.60	MN4	0.0003	237.60
P1	0.0107	42.11	M4	0.0032	276.75	M8	0.0002	251.80
MSF	0.0079	45.68	M3	0.0031	115.81	S6	0.0001	244.9
T2	0.0073	253.9	2MK3	0.0025	50.39	Z0	0	0
Q1	0.0069	313.0	MK3	0.0065	309.8			
mu2	0.0069	206.0	2SM2	0.0051	82.9			

*: Amplitudes of constituents used in computing tidal Form Ratio (Fr)

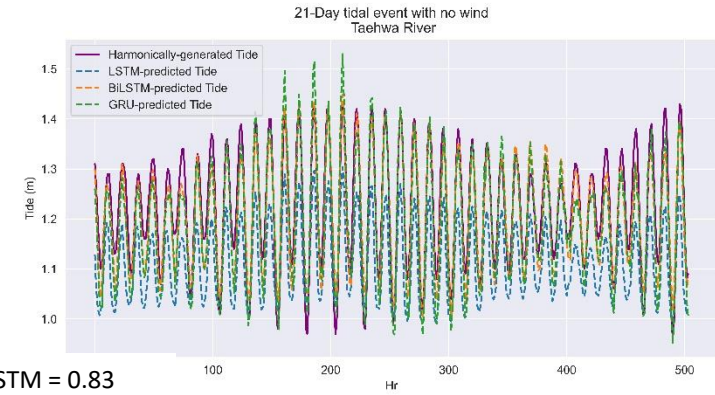
Table S2. Subsample prediction of tidal level

Daily subsample	Prediction with wind input	Prediction without wind
7 days	<p data-bbox="682 375 892 407">7-Day Tidal event with wind input Taehwa River</p>  <p data-bbox="367 724 525 813">LSTM = 0.83 GRU = 0.67 BiLSTM = 0.23</p>	<p data-bbox="1459 375 1690 407">7-Day Tidal event with no wind input Taehwa River</p>  <p data-bbox="1165 732 1323 821">LSTM = 0.73 GRU = 0.74 BiLSTM = 0.73</p>
14 days	<p data-bbox="682 846 892 878">14-Day tidal event with wind Taehwa River</p>  <p data-bbox="367 1195 525 1284">LSTM = 0.90 GRU = 0.82 BiLSTM = 0.50</p>	<p data-bbox="1459 846 1690 878">14-Day tidal event with no wind Taehwa River</p>  <p data-bbox="1165 1195 1323 1284">LSTM = 0.80 GRU = 0.82 BiLSTM = 0.85</p>

21 days

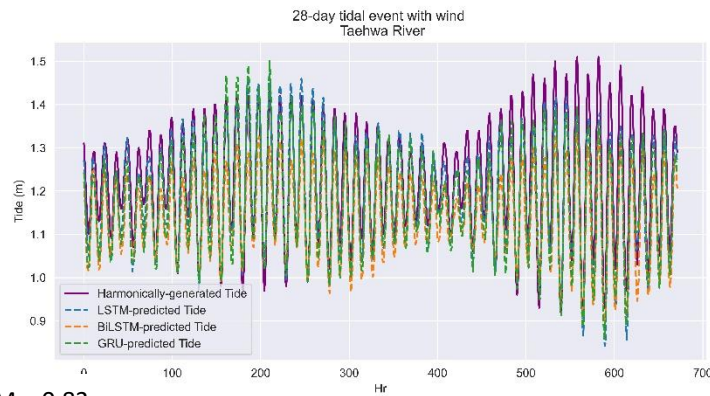


LSTM = 0.88
GRU = 0.79
BiLSTM = 0.43

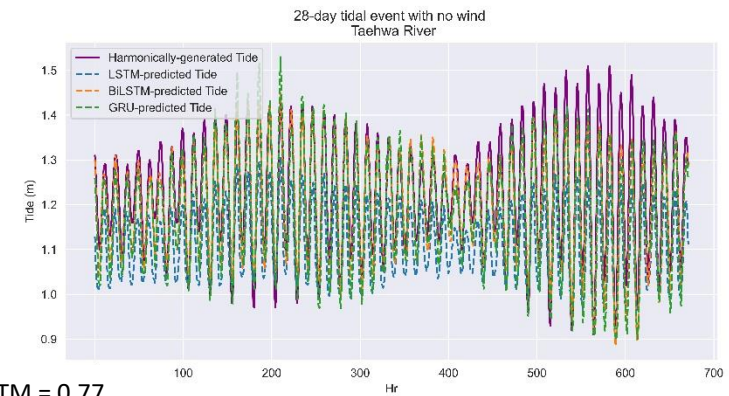


LSTM = 0.83
GRU = 0.82
BiLSTM = 0.84

28 days

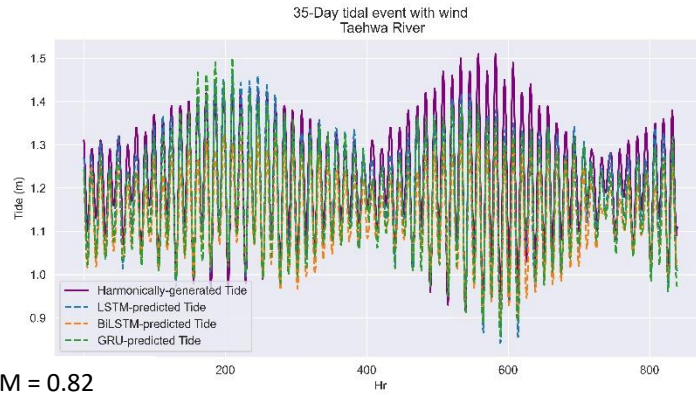


LSTM = 0.83
GRU = 0.77
BiLSTM = 0.47

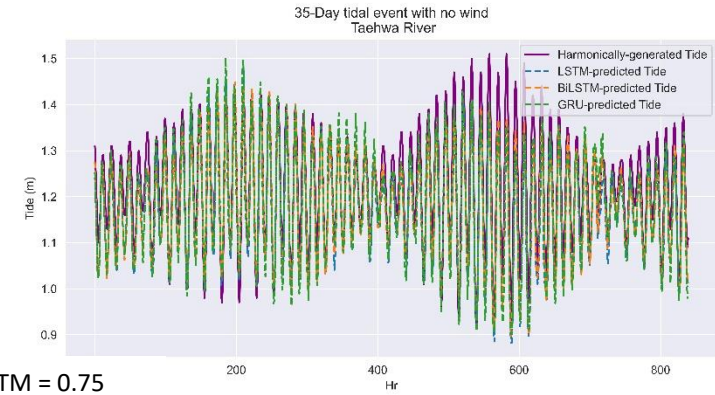


LSTM = 0.77
GRU = 0.78
BiLSTM = 0.80

35 days



LSTM = 0.82
GRU = 0.75
BiLSTM = 0.44



LSTM = 0.75
GRU = 0.77
BiLSTM = 0.78