

Fig. S1. IDF curves for the current and future climate based on the two cases of rainfall disaggregation for the first and last reference periods. Each subplot is for the second return period and for five rainfall durations.

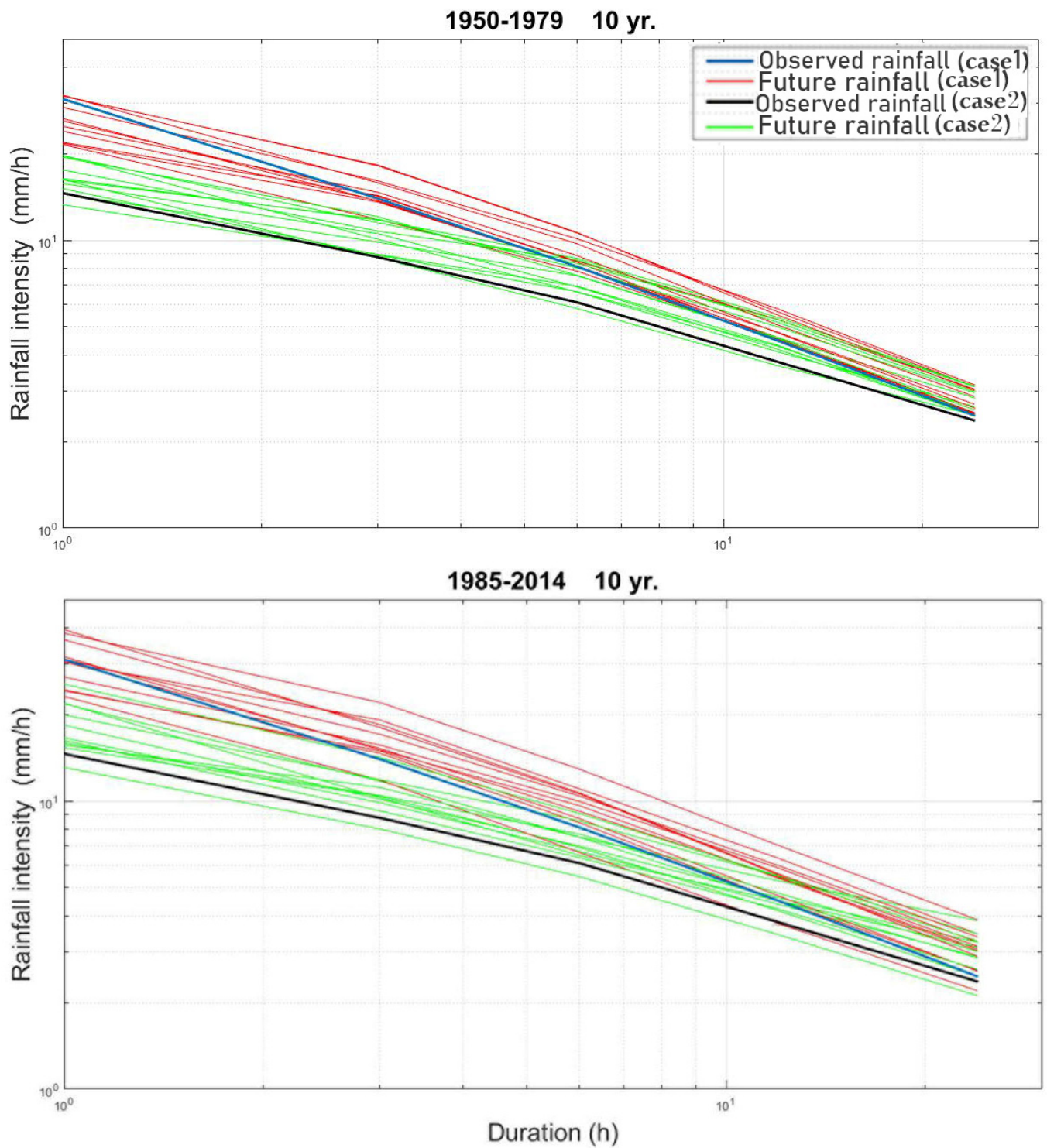


Fig. S2. IDF curves for the current and future climate based on the two cases of rainfall disaggregation for the first and last reference periods. Each subplot is for the third return period and for five rainfall durations.

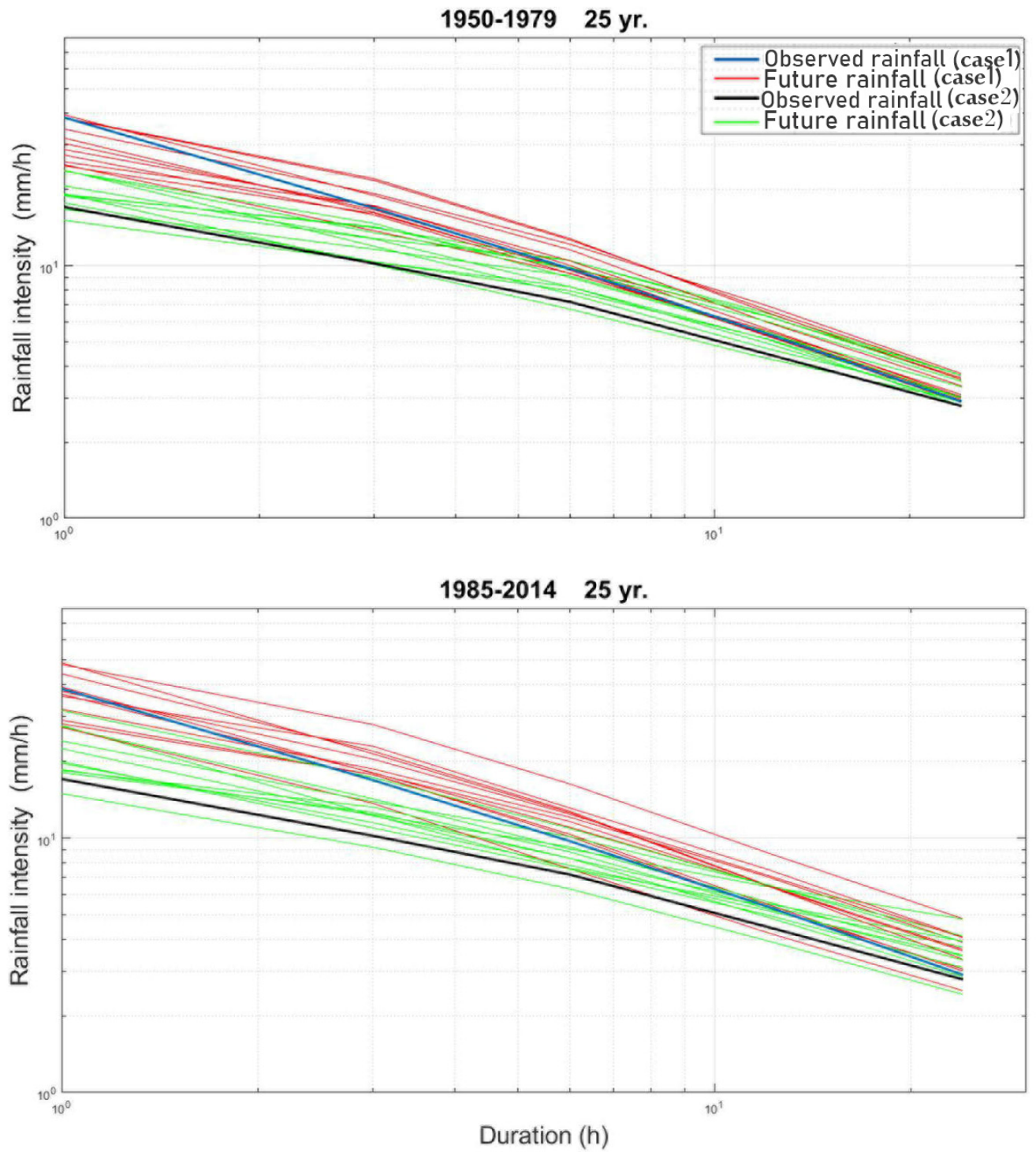


Fig. S3. IDF curves for the current and future climate based on the two cases of rainfall disaggregation for the first and last reference periods. Each subplot is for the fourth return period and for five rainfall durations.



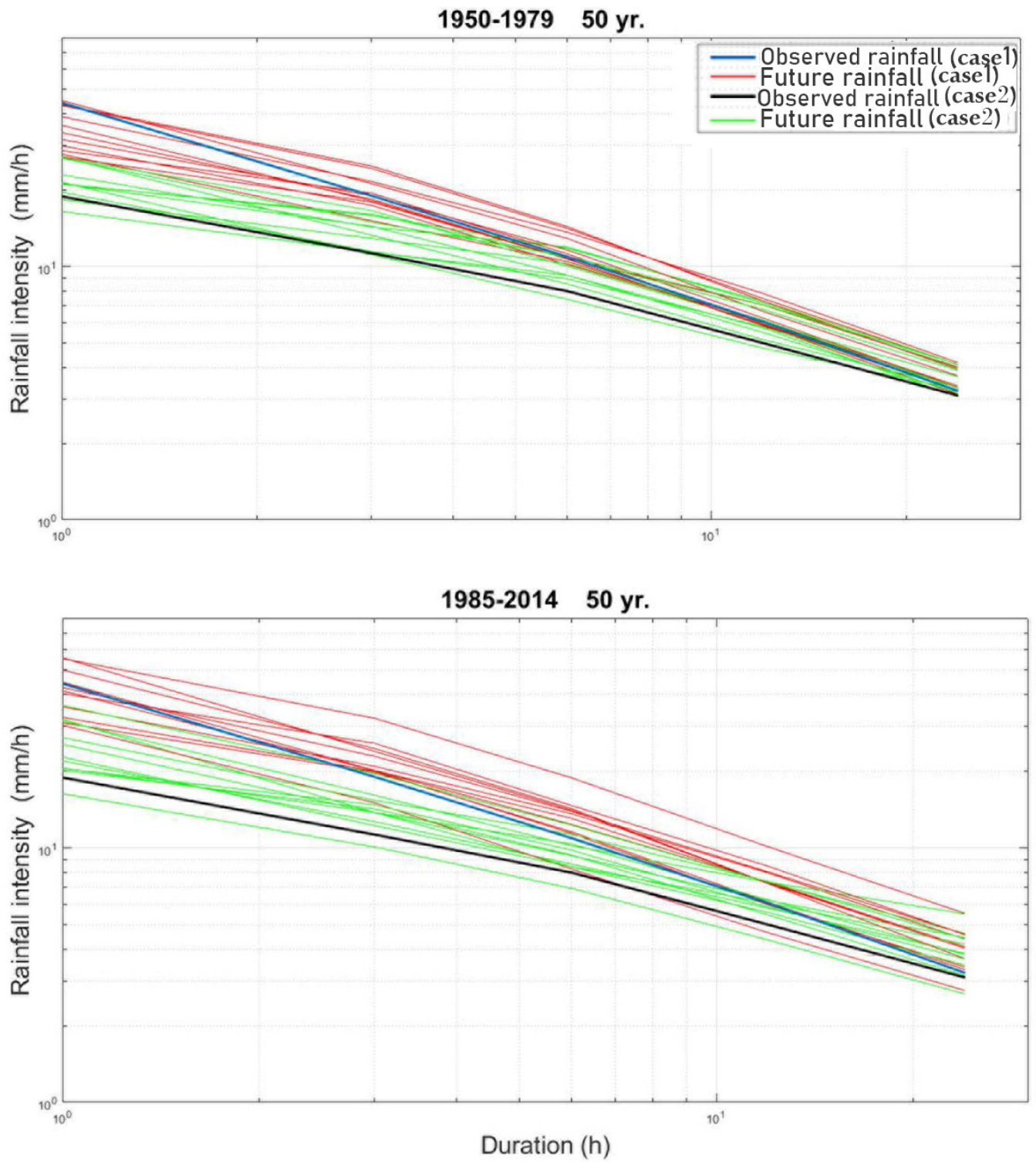


Fig. S4. IDF curves for the current and future climate based on the two cases of rainfall disaggregation for the first and last reference periods. Each subplot is for the fifth return period and for five rainfall durations.

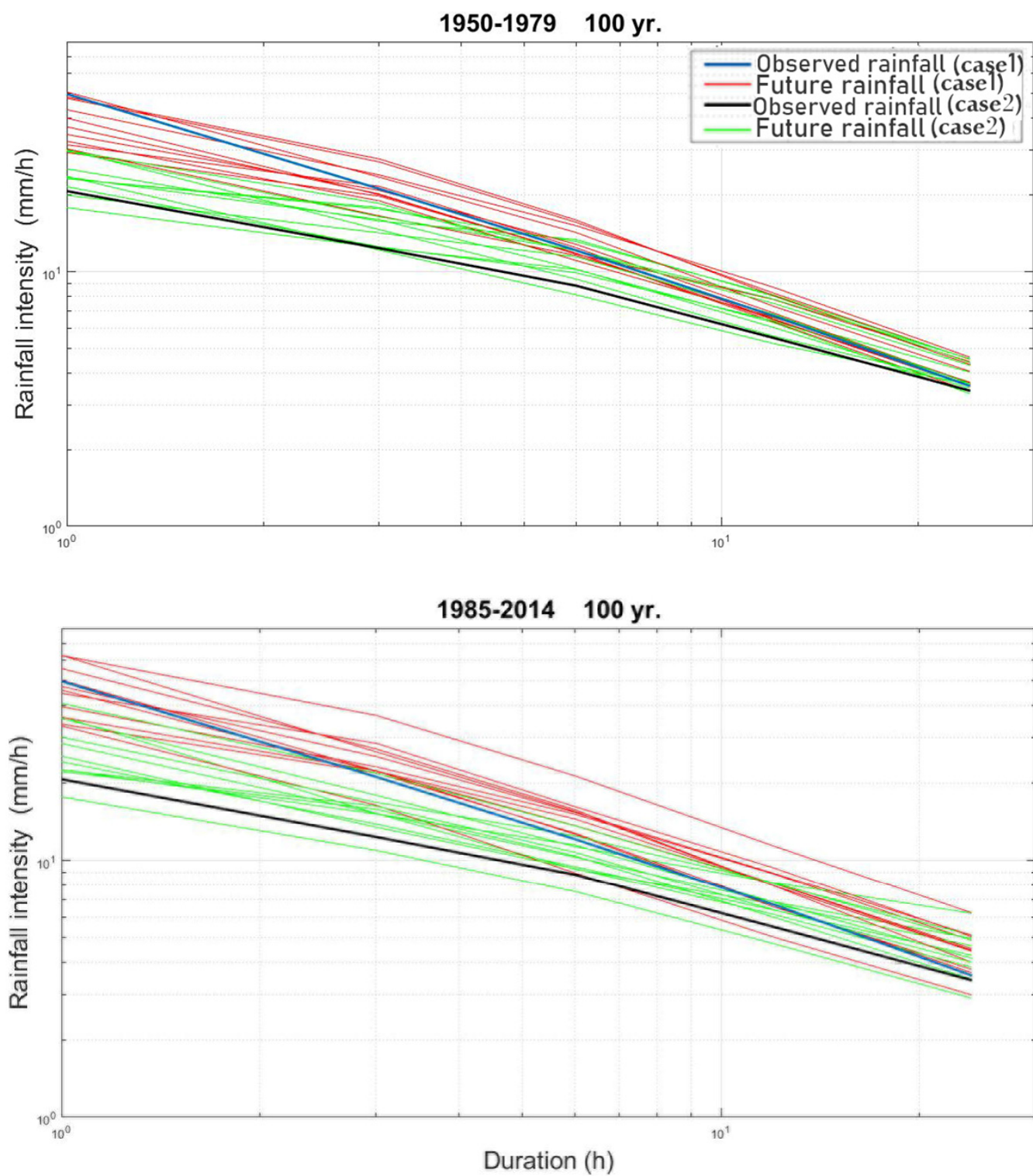


Fig. S5. IDF curves for the current and future climate based on the two cases of rainfall disaggregation for the first and last reference periods. Each subplot is for the sixth return period and for five rainfall durations.