

Figure S1(a). Total suspended solids concentrations on different dates (2014-2018).

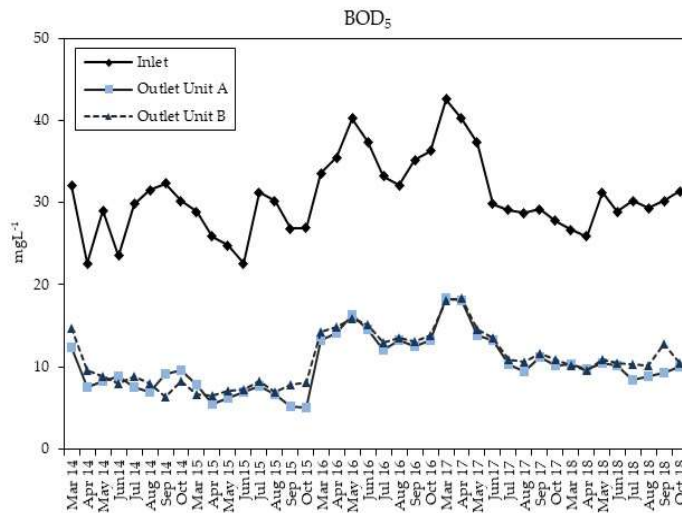


Figure S1(b). Biochemical oxygen demand (five days) concentrations on different dates (2014-2018).

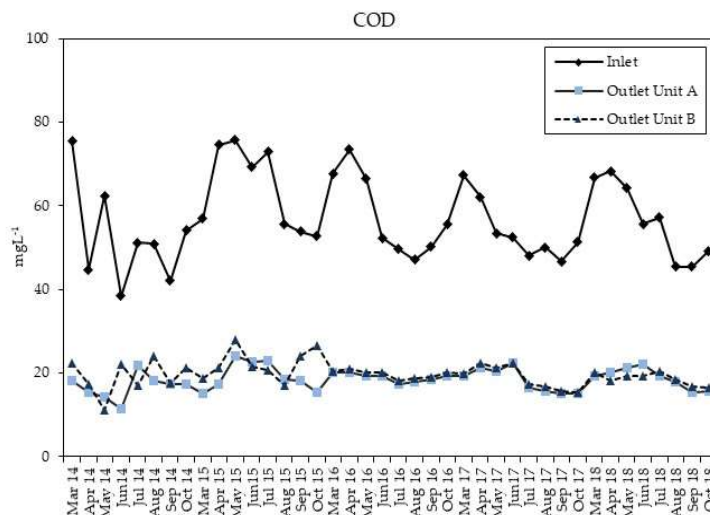


Figure S1(c). Chemical oxygen demand concentrations on different dates (2014-2018).

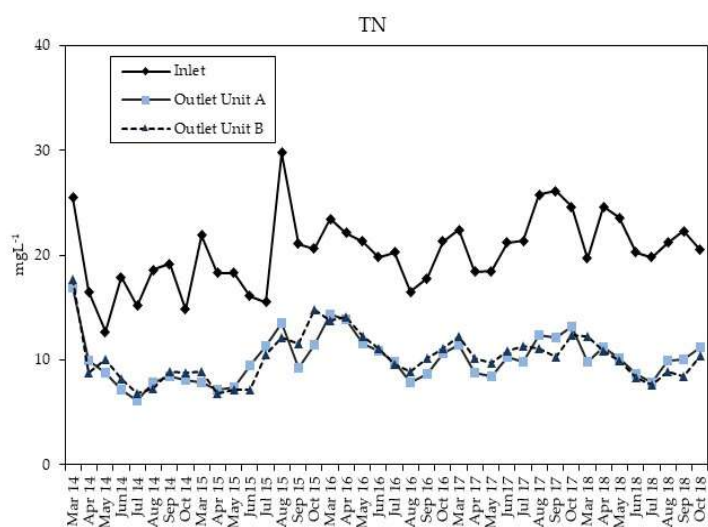


Figure S1(d). Total nitrogen concentrations on different dates (2014-2018).

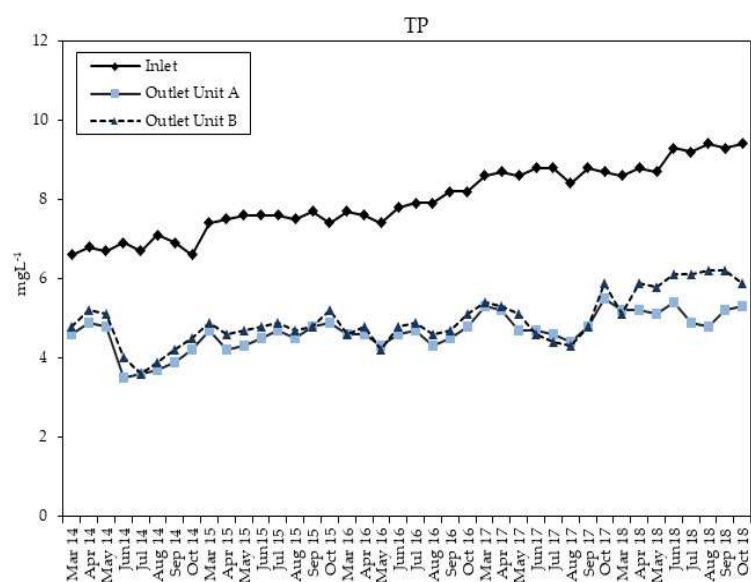


Figure S1(e). Total phosphorus concentrations on different dates (2014-2018).

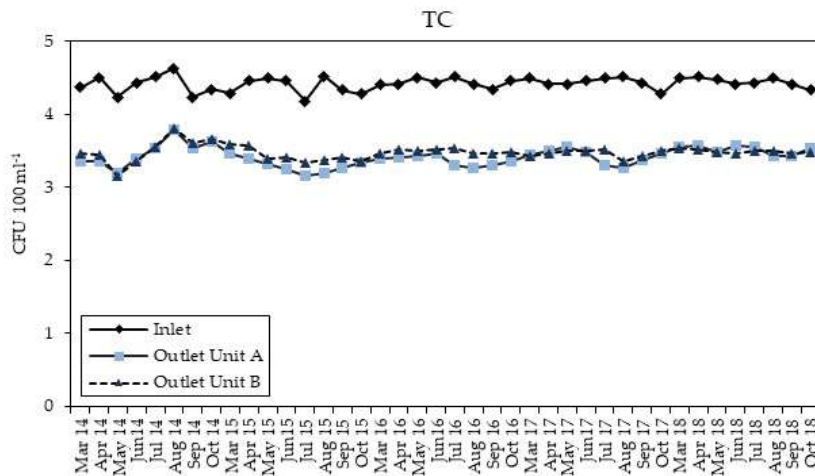


Figure S2(a). Total coliforms concentrations on different dates (2014-2018).

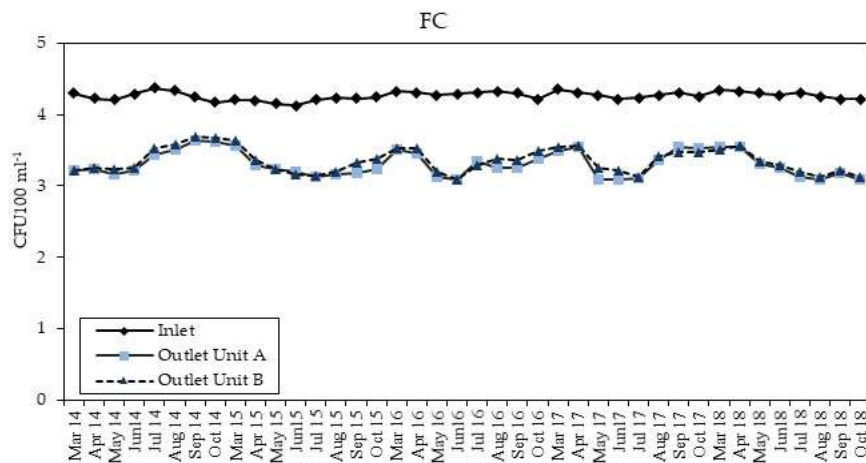


Figure S2(b). Faecal coliforms concentrations on different dates (2014-2018).

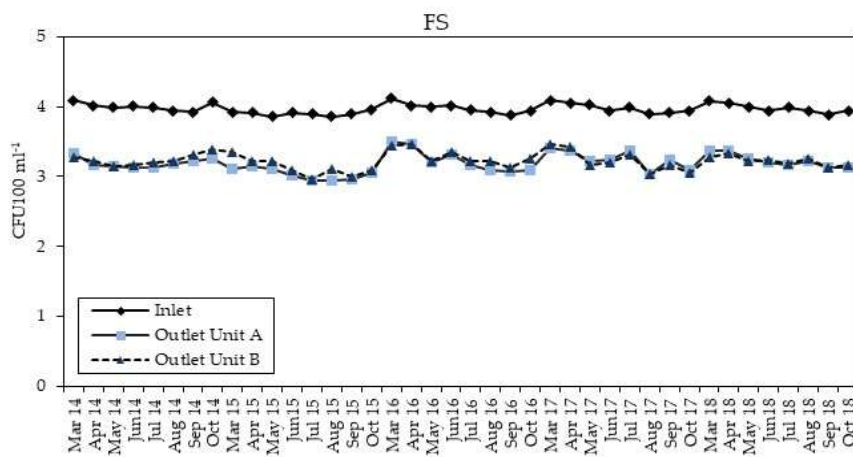


Figure S2(c). Faecal streptococci concentrations on different dates (2014-2018).

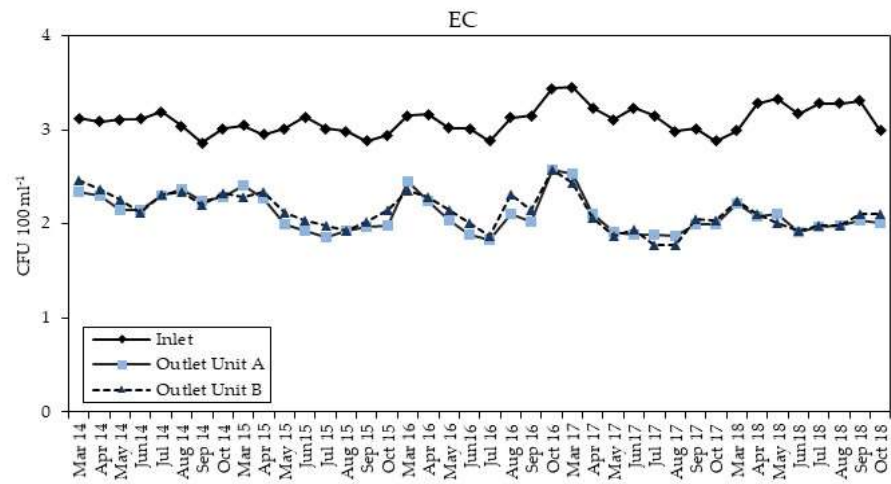


Figure S2(d). *Escherichia coli* concentrations on different dates (2014-2018).