

Supplementary Data

Reactivation of Frozen Stored Microalgal-Bacterial Granular Sludge under Aeration and Non-Aeration Conditions

Yao Shen ¹, Lin Zhu ¹, Bin Ji ^{1,*}, Siqi Fan ¹, Yabin Xiao ¹ and Yingqun Ma ^{2,*}

¹ Department of Water and Wastewater Engineering, Wuhan University of Science and Technology, Wuhan 430065, China; shy_13247189423@sina.com (Y.S.); zhuwuster@163.com (L.Z.); a794727614@sina.com (S.F.); xiaoyabing9697@sina.com (Y.X.)

² School of Chemical Engineering and Technology, Xi'an Jiaotong University, Xi'an 710049, China

* Correspondence: binji@wust.edu.cn (B.J.); Yingqun_Ma@xjtu.edu.cn (Y.M.)

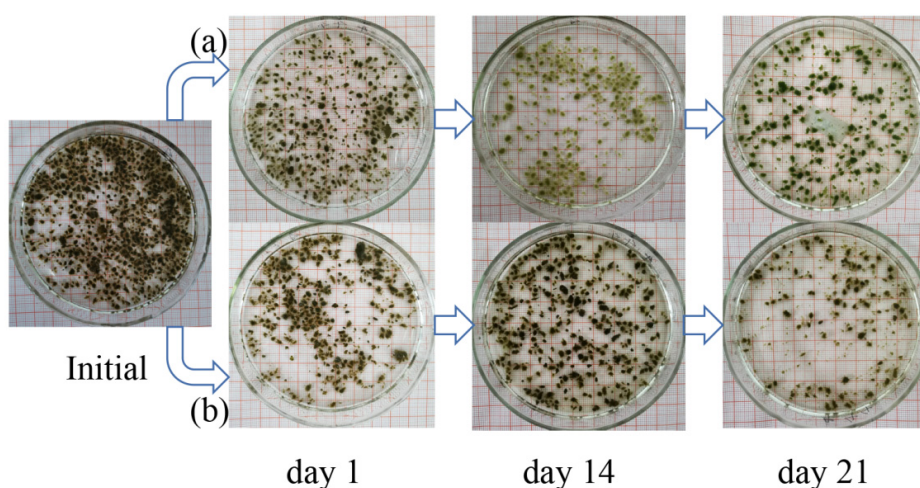


Figure S1. Variation in morphological appearances of microalgal-bacterial granular sludge (a) Aerated PBR; (b) Non-aerated PBR during the reactivation process.

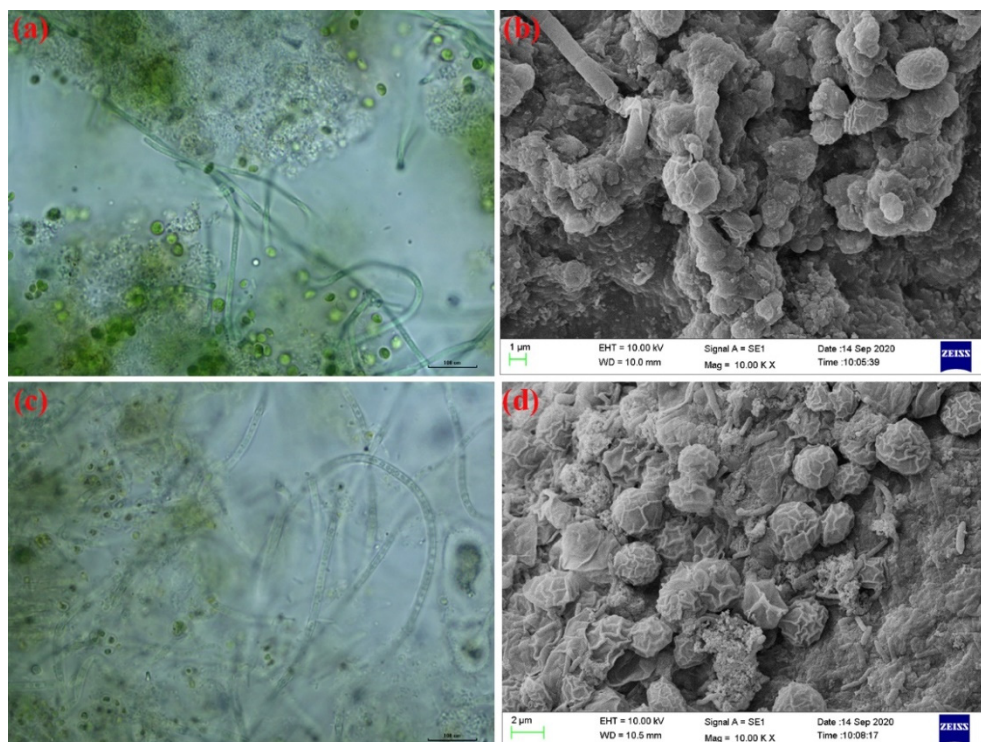


Figure S2. Microbial community reflected by microscope and SEM of microalgal-bacterial granules. Aerated PBR: (a) microscope; (b) SEM. Non-aerated PBR: (c) microscope; (d) SEM

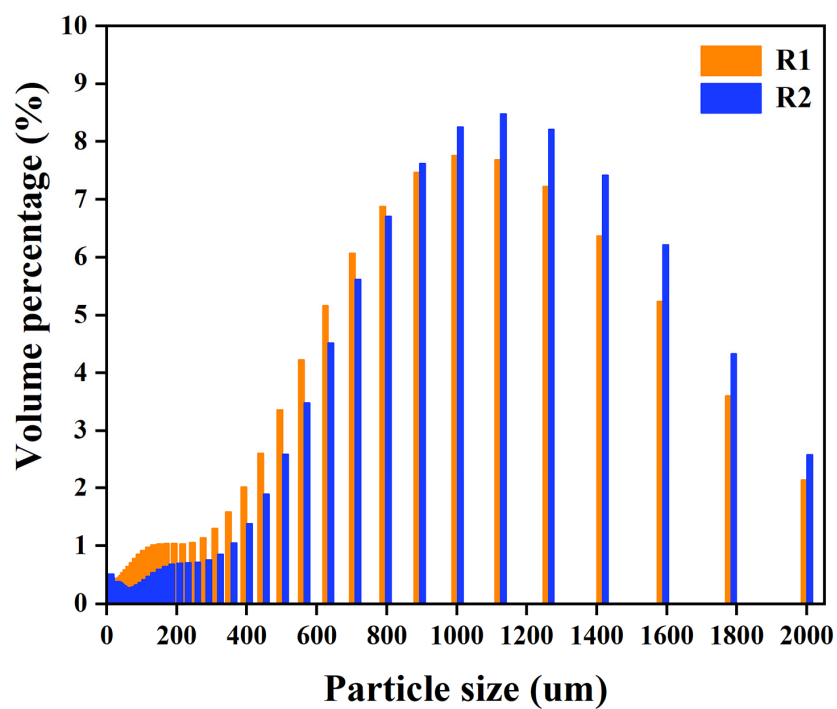


Figure S3. Particle size distributions of microalgal-bacterial granules after reactivation. (R1: Aeration; R2: Non-aeration).