

Supplementary material for

Identifying microbial distribution drivers of archaeal community in sediments from a black-odorous urban river – a case study of the Zhang River basin

Chao Shen ¹ ², Jiaqi Zhao ³, Guangwu Xie ¹, Yulai Wang ^{1*}, Qiang Chen ¹ and Yu Yao^{4*}

1 Chengdu Engineering Corporation Limited, Power China, Chengdu 610072, China

2 Urban Water Environment Treatment Engineering Technology Research Center of Sichuan Province

3 College of Environment, Hohai University, Nanjing 210098, China

4 School of Environment, Nanjing Normal University, Nanjing 210023, China

* Correspondence: 2017007@chidi.com.cn (Y. W); yaoyu@njnu.edu.cn (Y. Y)

Citation: Shen, C.; Zhao, J.; Xie, G.;

Wang, Y.; Chen, Q.; Yao, Y.

Identifying microbial distribution drivers of archaeal community in sediments from a blacken and odorous urban river. *Water* **2021**, *13*, x. <https://doi.org/10.3390/xxxxx>

Received: date

Accepted: date

Published: date

Publisher's Note: MDPI stays neutral with regard to jurisdictional claims in published maps and institutional affiliations.



Copyright: © 2021 by the authors.

Submitted for possible open access publication under the terms and conditions of the Creative Commons Attribution (CC BY) license (<http://creativecommons.org/licenses/by/4.0/>).

Table S1. The Good's coverage of the archaeal community from the eight sediment samples. The result are presented as mean \pm standard deviation (SD)

Samples	The Good's coverage value
A	99.61% \pm 0.06%
B	99.21% \pm 0.06%
C	99.60% \pm 0.05%
D	99.29% \pm 0.11%
E	99.32% \pm 0.07%
F	99.34% \pm 0.07%
G	99.21% \pm 0.12%
H	99.20% \pm 0.18%

Table S2. VIF value for selected environmental factors

Physicochemical factor	VIF Value	Physicochemical factor	VIF Value
TP	2.89	Zn	2.00
Eh	1.41	As	1.37
pH	2.74	Cd	4.71
Cr	2.41	Pb	4.48
Cu	3.82		

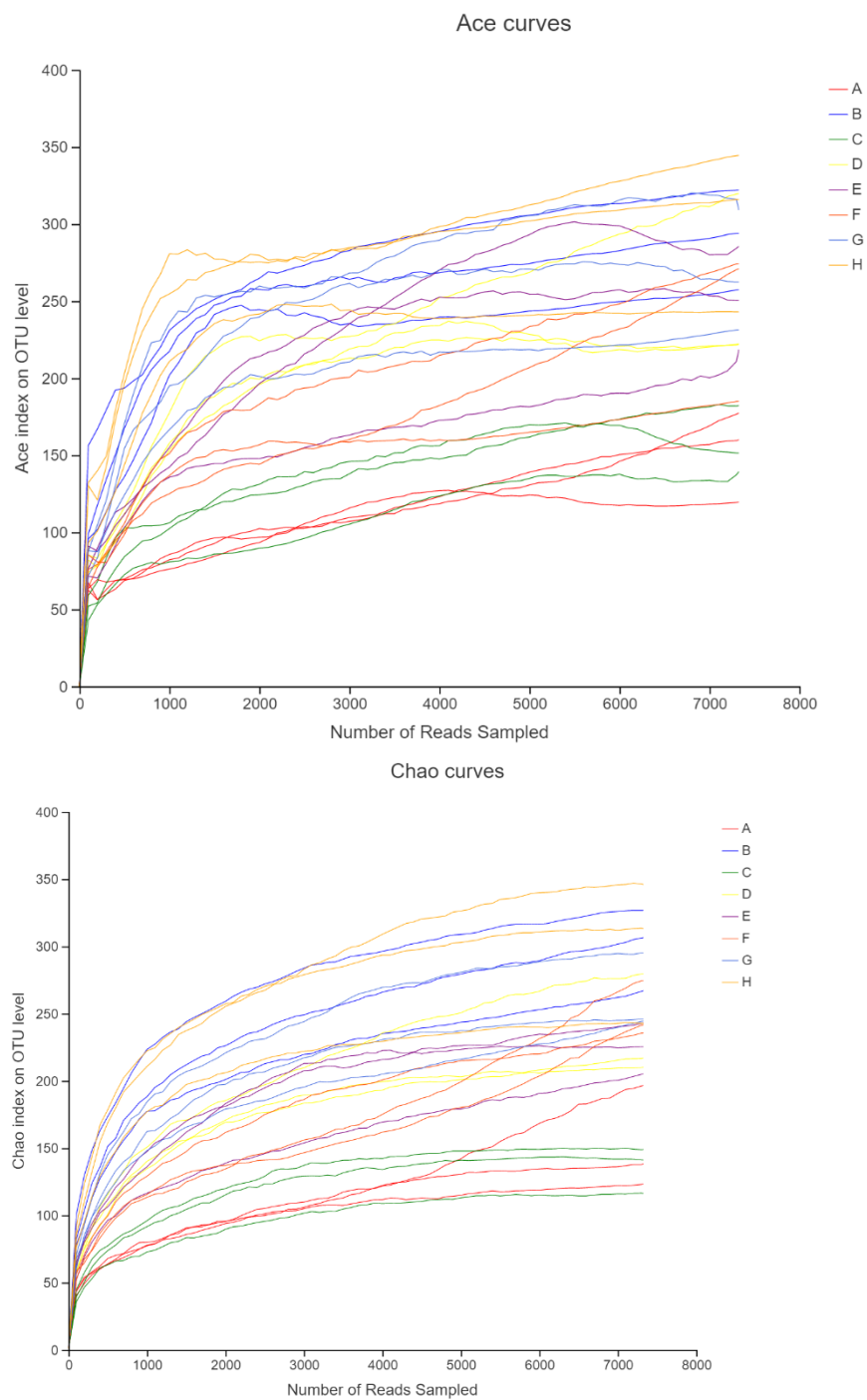


Figure S1. The rarefaction curves for ACE and Chao1 index of the archaeal community from the eight sediment samples.