

Figure S1. Geological section W-E crossing the Agri Valley from Menardi Noguera and Rea [24], modified. In the legend, units of the same geological age but belonging to different platforms are indicated with the same color.

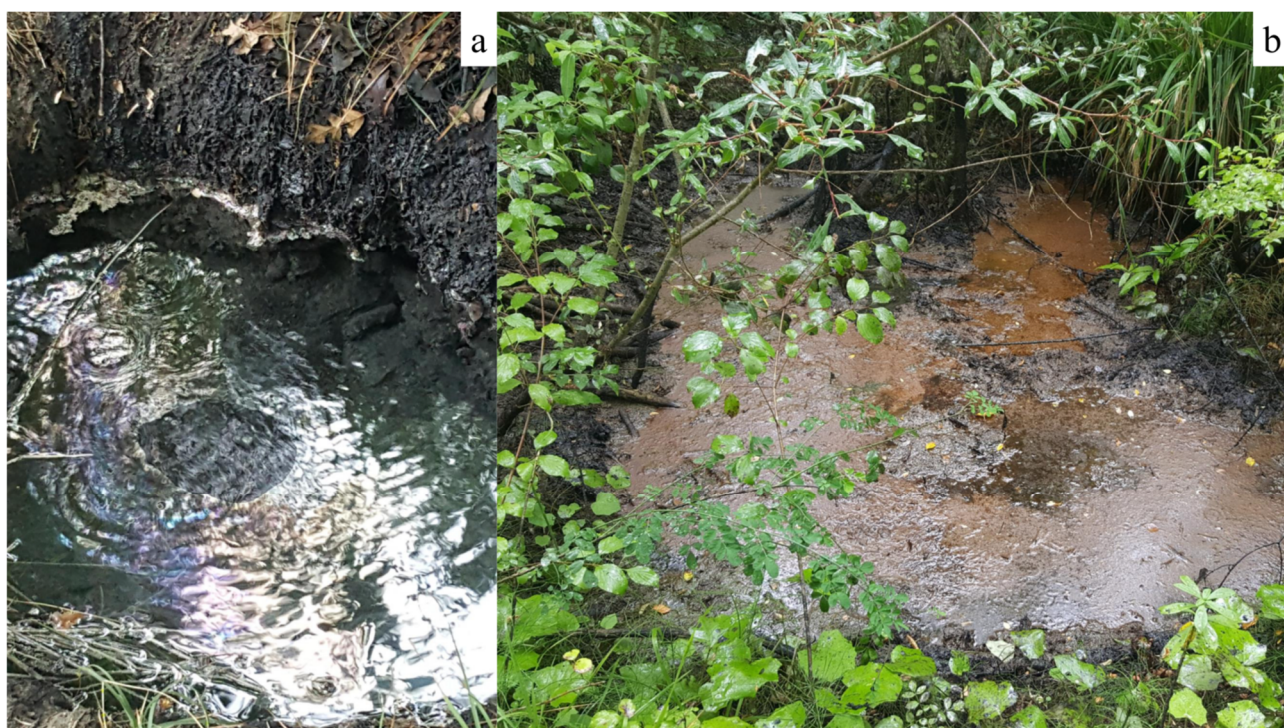


Figure S2. Hydrocarbon springs S1 (a) and S2 (b).

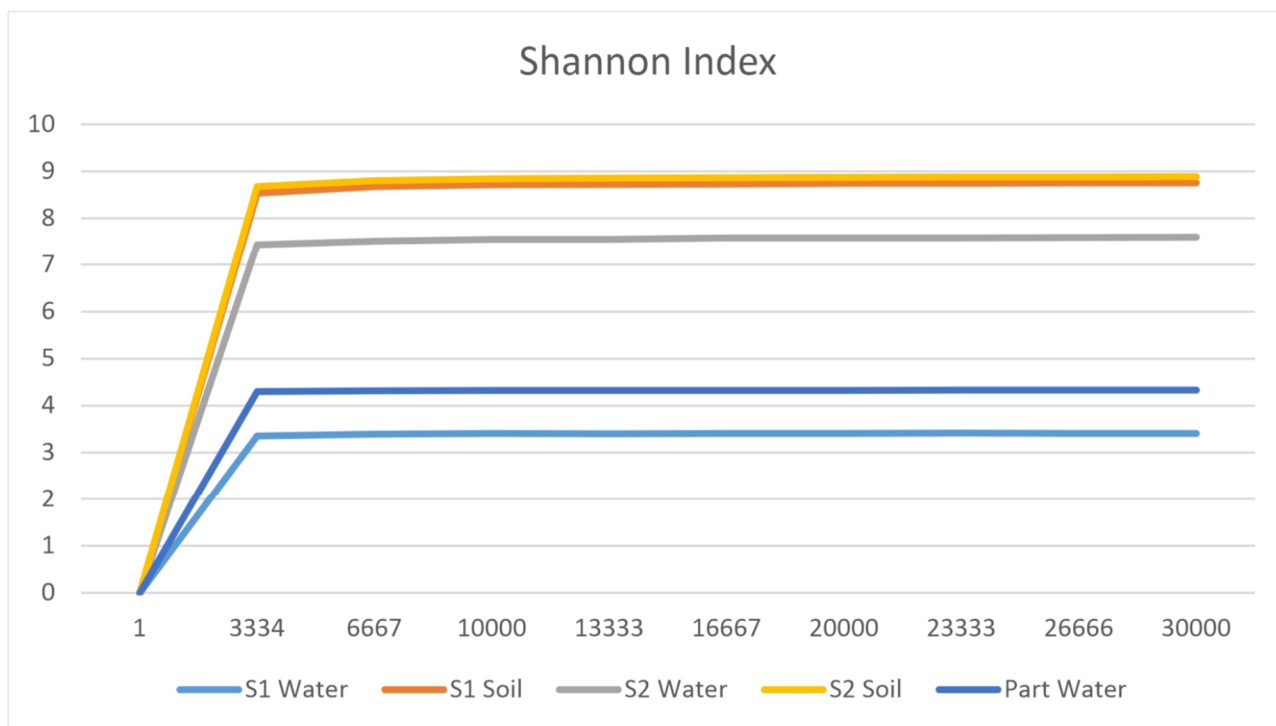


Figure S3. Rarefaction curves of spring water, groundwater, and soil samples collected at the study site. The alpha-diversity plots were obtained by using the Shannon index.