

Article

Supplementary Figures to Examination of Nutrient Sources and Transport in a Catchment with an Audubon Certified Golf Course

E. Grande, A. Visser, P. Beitz & J. E. Moran

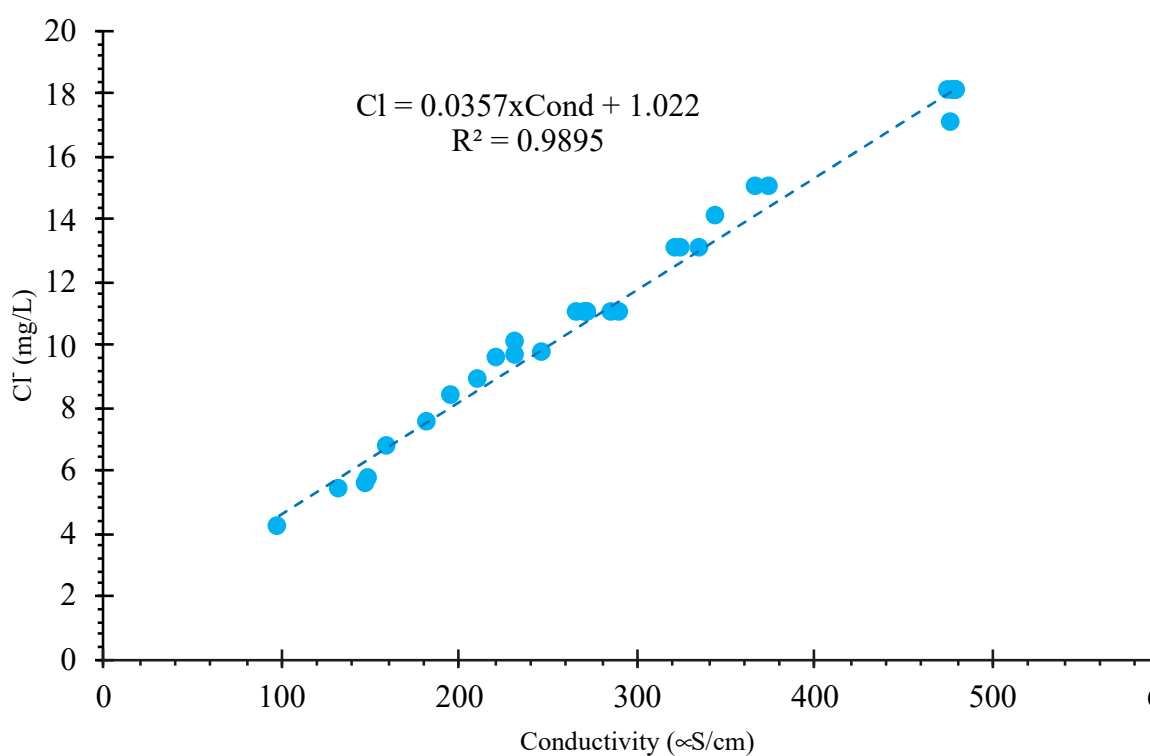


Figure S1. Linear relationship between chloride and electrical conductivity used to model chloride for storm hydrograph separation.

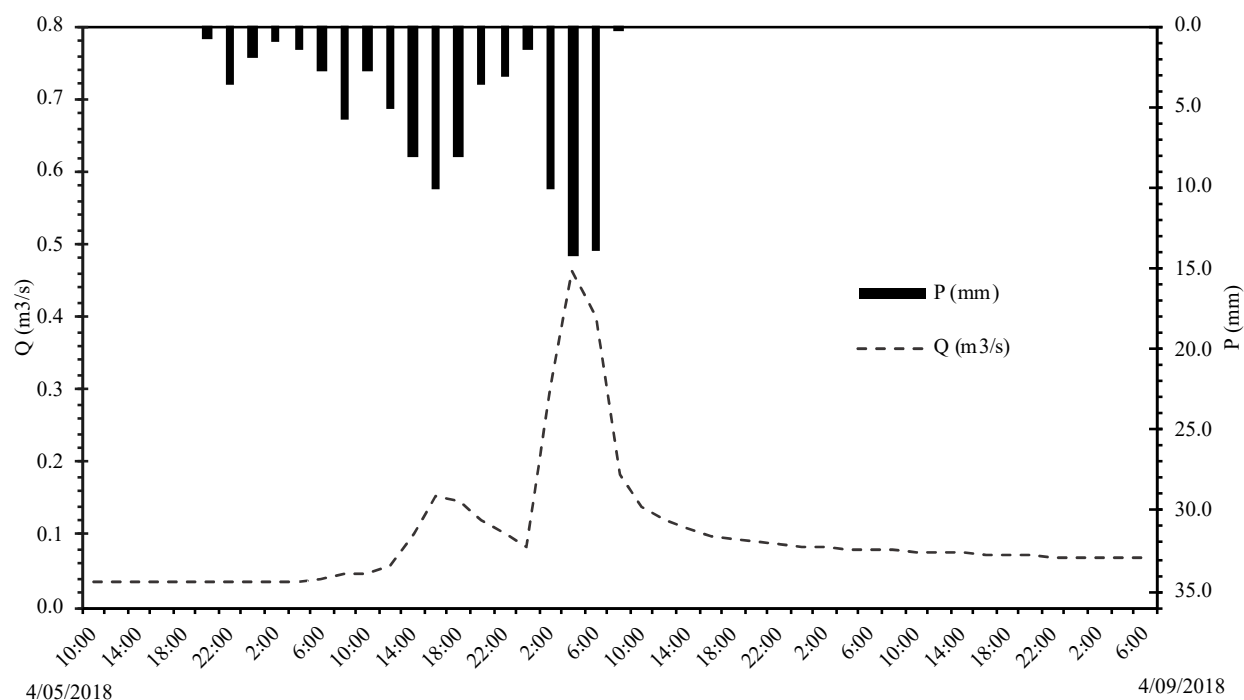


Figure S2. Wildcat Creek's Hyetograph and hydrograph for precipitation event on April 5th to the 9th, 2018

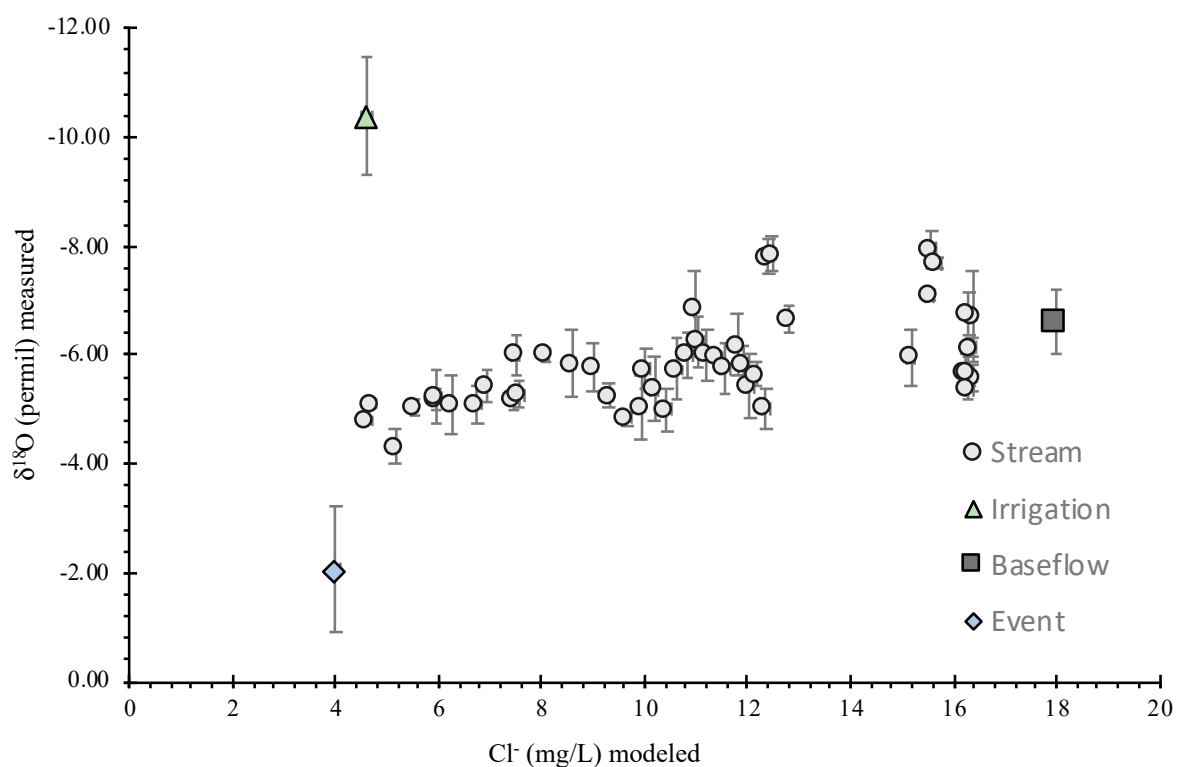


Figure S3. Graphical representation of end members and samples taken for hydrograph separation during an event on April 5th to the 9th, 2018. Error bars of end members represent standard deviation of the mean of measurements for the 3 end members. Error bars on stream samples are standard deviation (analytical uncertainty) from individual measurements. Horizontal error bars are within the symbol size.

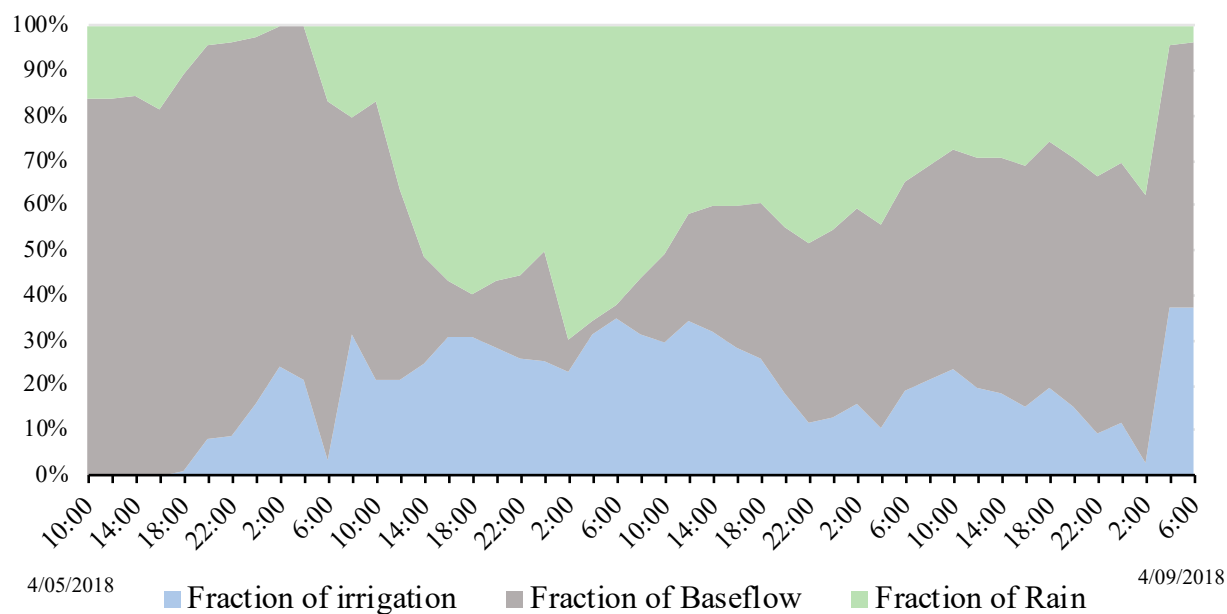


Figure S4. Hydrograph Separation for a precipitation event on April 5th to the 9th, 2018.



© 2019 by the authors. Submitted for possible open access publication under the terms and conditions of the Creative Commons Attribution (CC BY) license (<http://creativecommons.org/licenses/by/4.0/>).